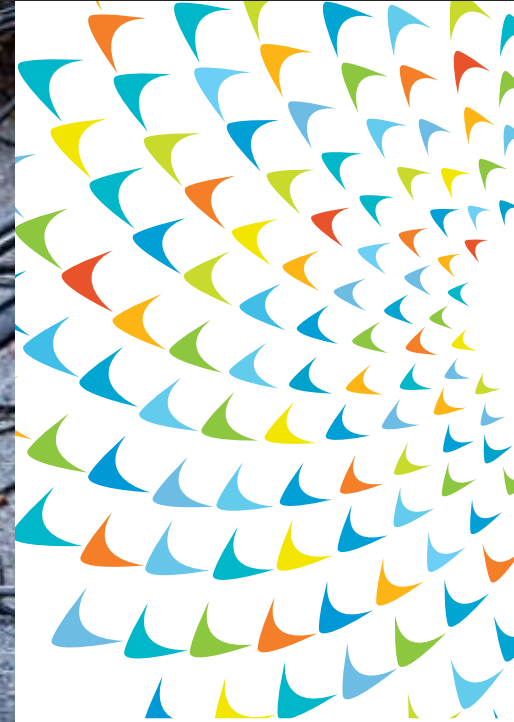


Workshop on Resilient Coasts, Thriving Communities: A Sea of Solutions.

Resilient Energy Infrastructure, Green Ports

The views expressed in this presentation are the views of the author/s and do not necessarily reflect the views or policies of the Asian Development Bank, or its Board of Governors, or the governments they represent. ADB does not guarantee the accuracy of the data included in this presentation and accepts no responsibility for any consequence of their use. The countries listed in this presentation do not imply any view on ADB's part as to sovereignty or independent status or necessarily conform to ADB's terminology.



***Jaimes Kolantharaj,
Principal Energy Specialist
Energy Sector Office , SD1***



Climate Events Affects All



Climate Events Affects All



Climate Events Affects All



Climate Events Affects All



Climate Events Affects All



God's Own Country
In Trouble!



Climate Change and Social Inequity :



Unequal Burden of Climate Impacts— Affects Poor Disproportionately



Unequal Burden of Climate Impacts— Affects Poor Disproportionately





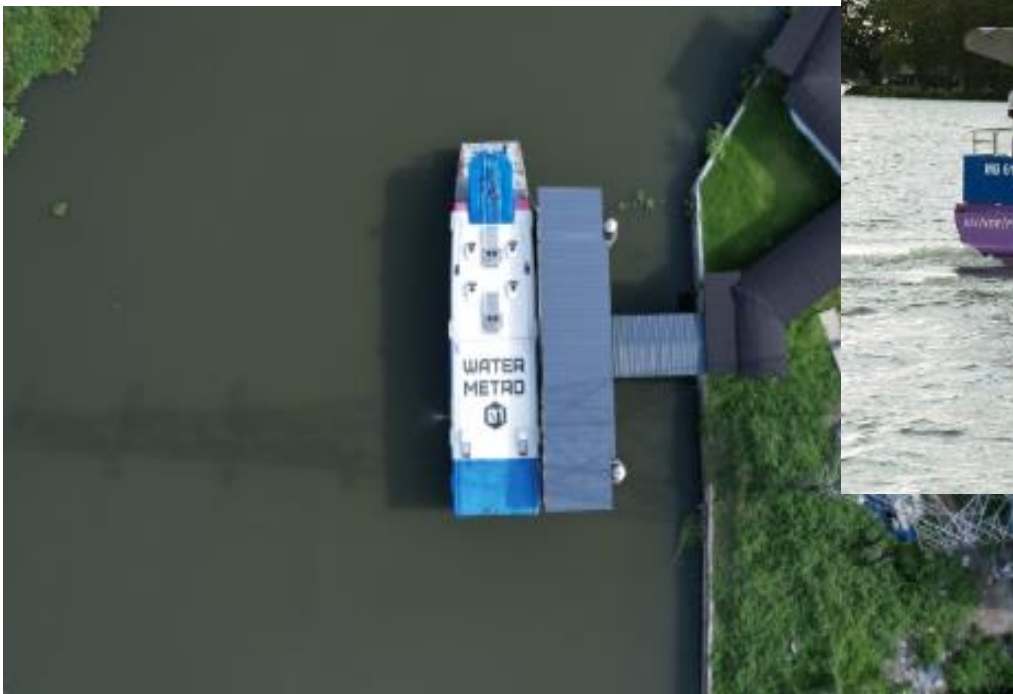
Climate Infrastructure Investments

- ❑ **Prioritize Long-Term Gains Over Immediate Returns** – Climate-resilient infrastructure may not give us short-term profits, but it delivers long-term survival.
- ❑ **Engage and Empower Communities (Inclusive resilience)** – the best infrastructure is the one people believe they own and sustain.
- ❑ **Build Capacity at All Levels** – Strengthen technical, institutional, and community skills to ensure effective Planning, implementation and maintenance.
- ❑ **Enhance Shock Absorption** –While nature may be unpredictable, our response doesn't have to be.



Classic Example of Infrastructure Innovation

- Integral to modern economies – enabling access to services, facilities, and livelihoods.
- **Innovations in physical infrastructure (e.g., Kochi Water Metro)** reshape connectivity and quality of life.
- Clean and affordable energy is central to daily life and livelihoods.



Infrastructure and Interdependence



Even the best fish curry in Kerala doesn't reach the plate unless someone has powered the cold chain and the boat engine!



Risks to Resilience: Preparing Infrastructure

- ✓ **We cannot stop every storm**—but we can build systems that bounce back faster.
- ✓ **Communities are not just beneficiaries**—they are co-designers and co-owners of resilience.
- ✓ **Our job is not only to keep the lights on**—but to ensure those lights illuminate opportunity, equity, and dignity.

The real question is : *can we bring different sectors together—energy, transport, Climate Resilience, disaster management, and social development—to build solutions that are inclusive and future-proof ??*



Thank You



Shri Narendra Nath Veluri is an Indian Forest service officer , who brings rich and extensive experience from the environmental protection side in his previous roles in the Kerala forest Dept. He has contributed extensively to addressing the human-animal conflict in Kerala. He currently serves as CEO of ANERT (The Agency for New and Renewable Energy Research and Technology), Govt of Kerala. ANERT is responsible for giving wider coverage of RE in the state and to also fostering innovation. The organization is deeply connected to communities, and he will be presenting on “**Coastal Energy and Communities**”.

Shri Dr. Manisha Mukherjee has over 24 years’ experience in climate change, disaster risk management, and sustainability in the context of international development programs. Her area of work also includes building climate and disaster resilience in coastal areas through cross-sectoral interventions and has worked with national and state governments in India and other countries with agencies like ADB, World Bank, different UN agencies, DFID, and GIZ. Currently, she serves as Executive Director for Sustainability, Climate Change, and Development Sector at Nangia Andersen LLP, India. She will be presenting on “**Climate Resilient Energy Infrastructure for Coastline**”



Ms Martha Wakoli is a Senior Manager at CLASP with a decade of experience in the energy access sector. She co-leads the Low Energy Inclusive Appliances (LEIA) program which is a Research and Demonstrator program that promotes high quality, energy-efficient appliances to boost incomes, reduce carbon emissions, and support sustainable development in Sub-Saharan Africa, South Asia and beyond. She will be presenting on “Enhancing Livelihood of Communities Through Renewable Energy.”

Mr. Ankush Saxena is an Associate Partner with KPMG with deep expertise in sustainable maritime transport. He has led strategic project management for environmentally aligned port and freight corridor developments across India. His work emphasizes integrating green logistics, efficient port operations, and climate-resilient infrastructure. He actively leverages digital tools, smart port technologies, and data-driven planning to drive innovation in green port ecosystems. He will be presenting on “Green Ports”.



Dr. Sekhar Lukose Kuriakose joined the Government of Kerala in 2011 and is serving as the Member Secretary, Kerala State Disaster Management Authority, the State level statutory apex body for disaster management. He started the Kerala State Emergency Operations Centre and is heading it since its beginning in 2011. He was instrumental in creating the District Emergency Operations Centers in all 14 districts. He serves in various high-level Government committees, represents the Government of Kerala in the Executive Committee of the Institute for Climate Change Studies and several National committees on disaster management.