

# Inclusive, Sustainable, Prosperous and Resilient Health Systems in Asia and the Pacific INSPIRE Health Forum

7-11 July 2025 • A Hybrid Event



Parallel Session 43

---

# **Global Heat Health Information Network: The Unseen Impacts of Chronic Heat and the Critical Role of Health Data**

13:15-14:30 PM Manila time  
Thursday 10 July 2025  
Auditorium 1

## Presentation

# Chronic Heat Exposure and Its Public Health Impacts

### **Ms. Sally Edwards**

Coordinator, WHO Asia-Pacific Centre for Environment and Health, World Health Organization Regional Office for the Western Pacific (WHO WPRO)







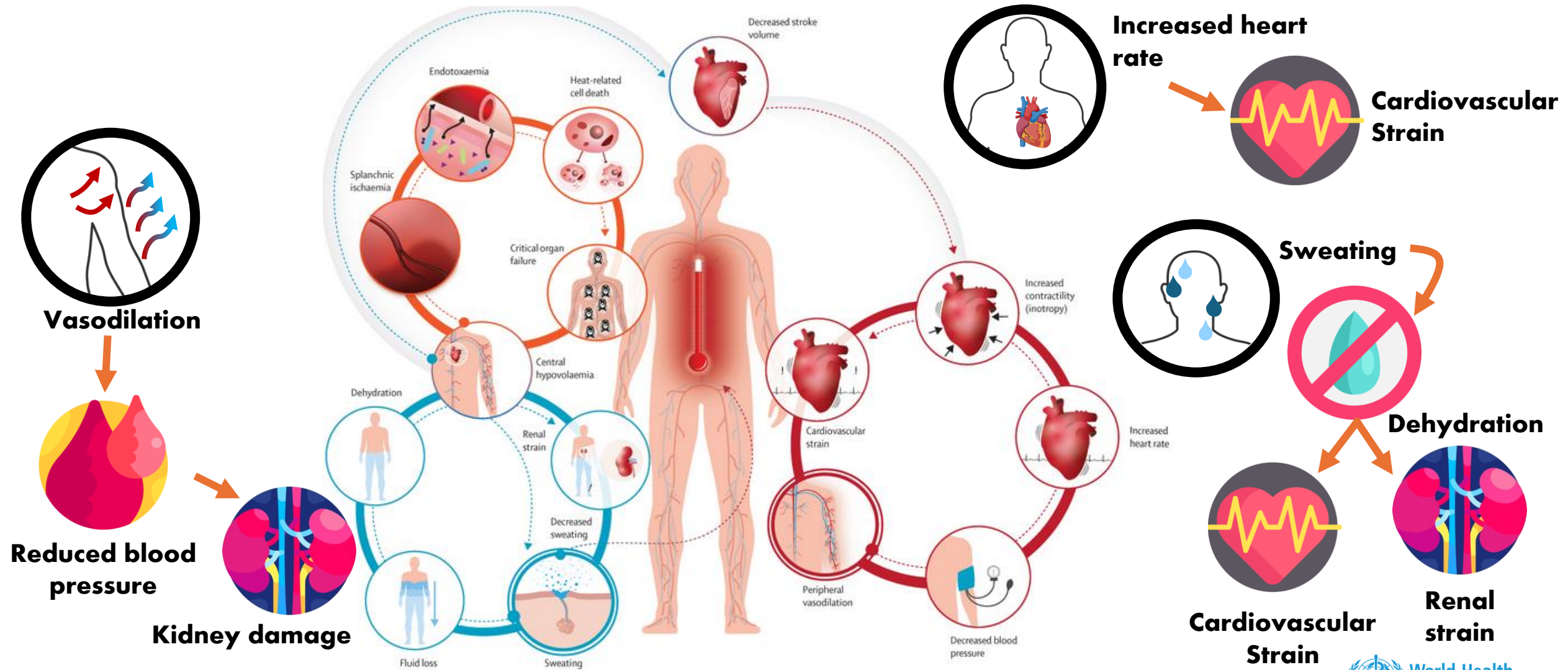
# Chronic heat exposure and its public health impacts

**Sally J Edwards**

Coordinator,

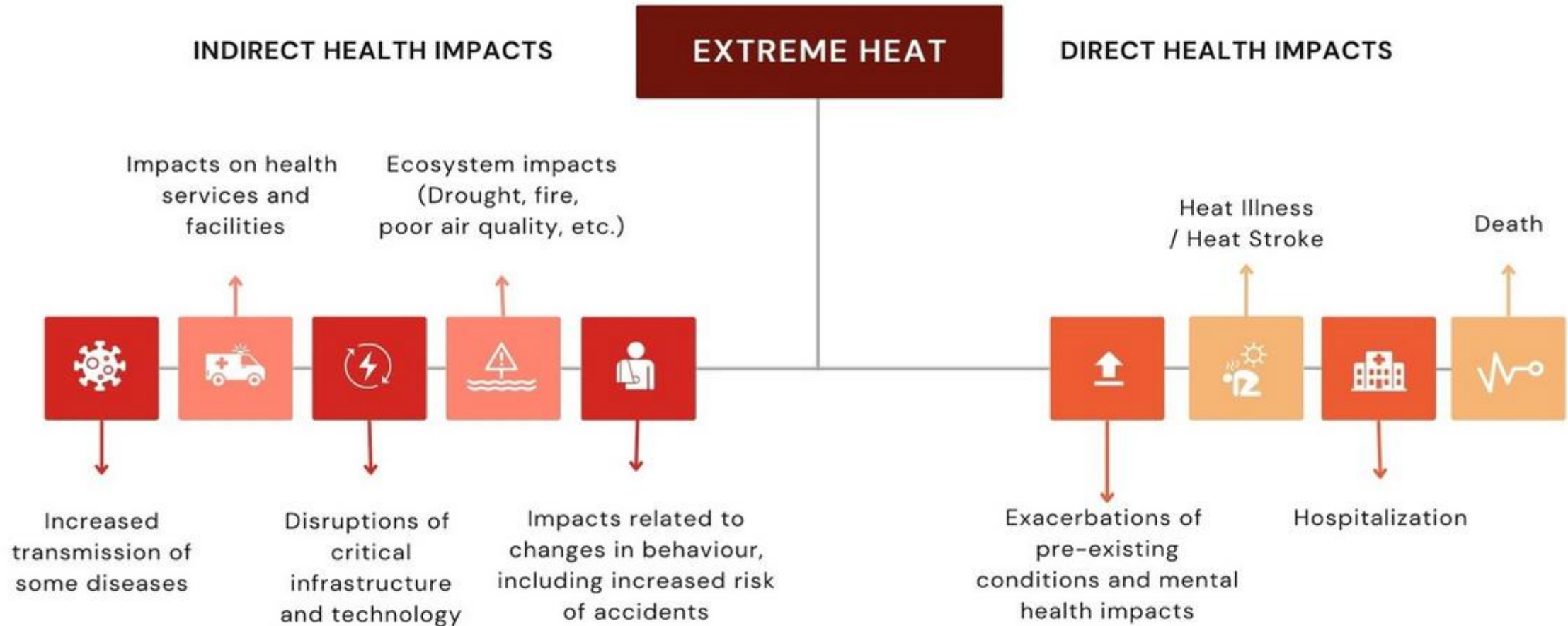
WHO Asia-Pacific Centre for Environment and Health in the  
Western Pacific Region (ACE)

# Extreme heat is an urgent and growing threat to human health .....



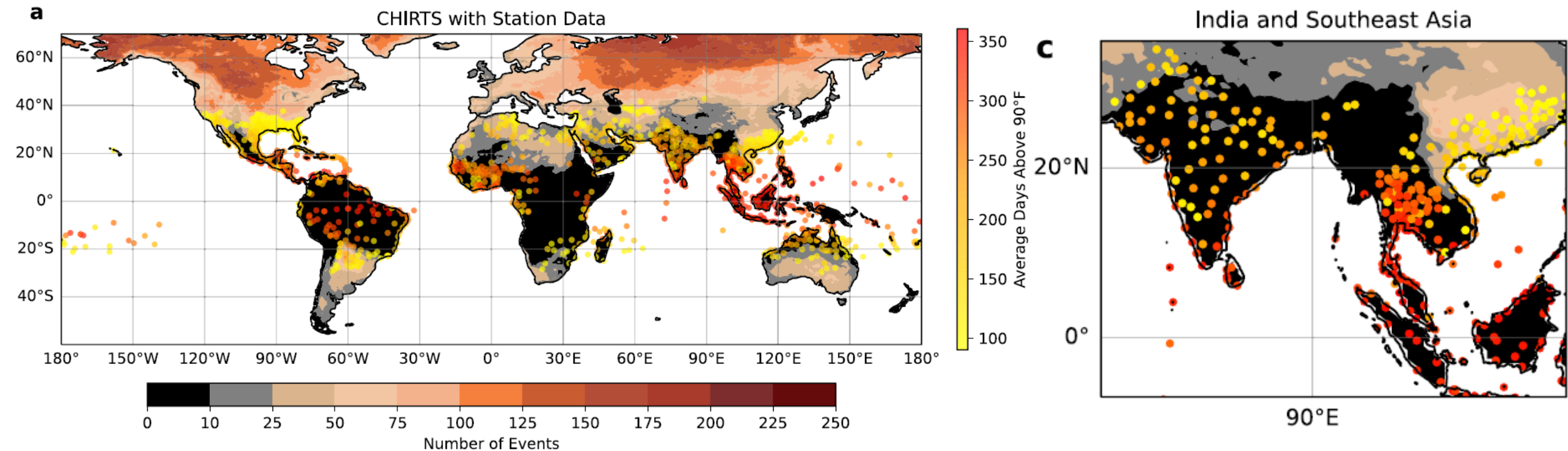


# .... that has broad impacts on health (compounding and cascading risks) ...



# Traditionally defined heat waves fundamentally differ from chronic heat.

- Number of heatwaves between 1983 and 2016 using the WMO definition of 5 consecutive days of temperature anomalies of 5 °C or greater.
- Black indicates regions with fewer than 10 heat waves within the period.
- Overlaid is the average number of days per year with a maximum daily heat index >90°F (32.2 °C) for more than three months of the year from 1993–2023.

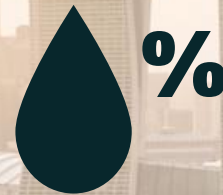


Cruz, M et al 2025. Where heat does not come in waves: a framework for understanding and managing chronic heat

# Chronic heat



**HIGH  
TEMPERATURES**



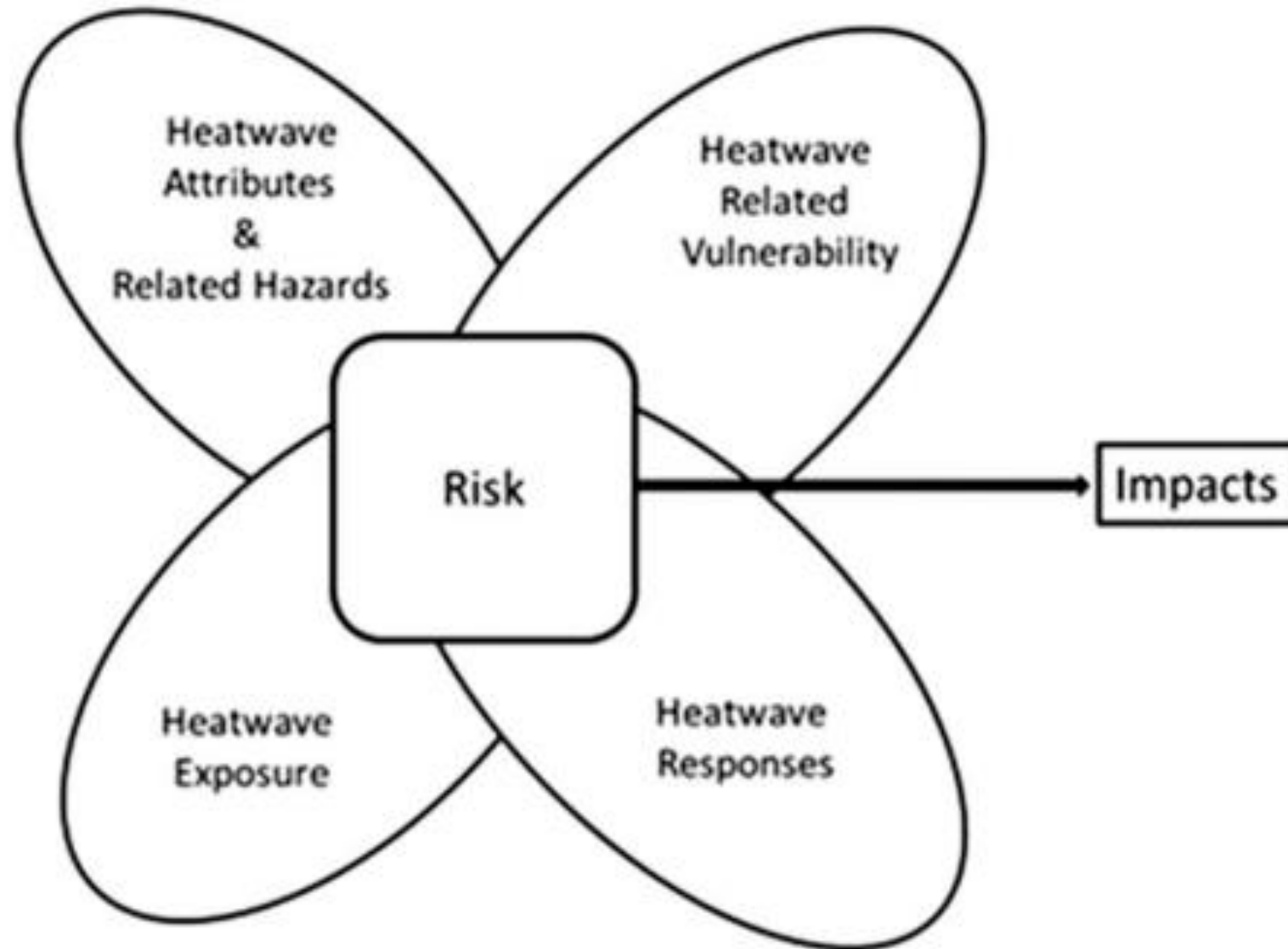
**HIGH  
HUMIDITY**



**SUSTAINED  
EXPOSURE**

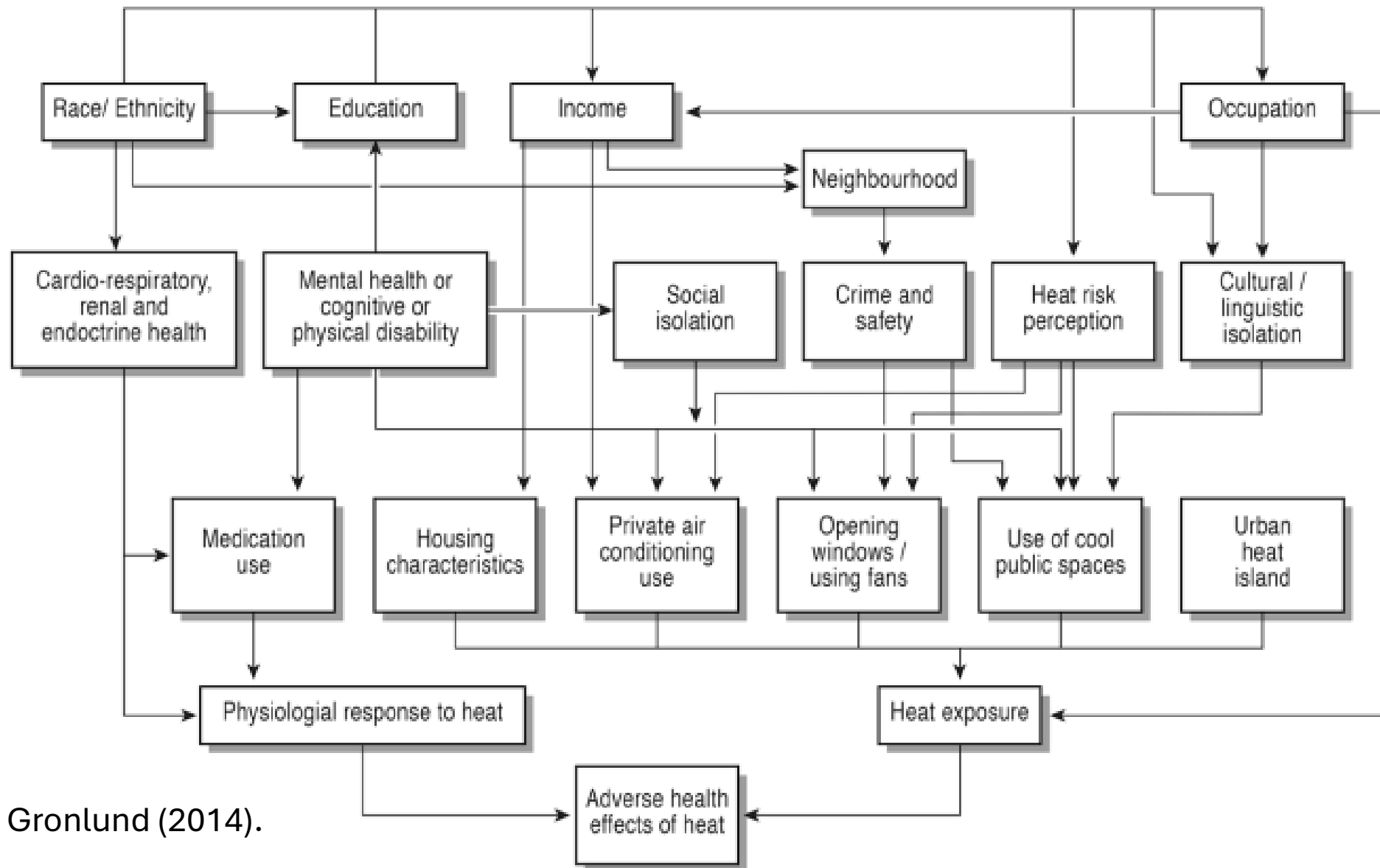


# The interaction between the four determinants of heatwave related risk



**Heatwaves: Causes,  
Consequences and  
Responses 2024**

# The interaction of a range of interconnected vulnerability factors



Source: Gronlund (2014).

Thank you.