

This is not an ADB material. The views expressed in this document are the views of the author/s and/or their organizations and do not necessarily reflect the views or policies of the Asian Development Bank, or its Board of Governors, or the governments they represent. ADB does not guarantee the accuracy and/or completeness of the material's contents, and accepts no responsibility for any direct or indirect consequence of their use or reliance, whether wholly or partially. Please feel free to contact the authors directly should you have queries.



White Bay Cruise Terminal

OUR SHORE POWER STORY

CATHERINE BLAINE, ACTING GROUP EXECUTIVE INFRASTRUCTURE, ASSETS AND DEVELOPMENT

11 March 2026



White Bay Cruise Terminal



White Bay Cruise Terminal



Our Moment – March 2022


The Sydney Morning Herald



Carnival Australia senior vice-president Peter Little, left, Transport Minister David Elliott and Port Authority chief executive Philip Holliday at the White Bay Cruise Terminal on Monday. EDWINA PICKLES



The Project



Port Authority plans to provide Australia's first Shore Power cruise ship connection point at White Bay Cruise Terminal by the end of **2026**.

This will be a **first in the Southern Hemisphere** for a cruise terminal.

Estimated infrastructure cost **~\$60 million**

Reducing noise and local air emission

Demonstrating industry commitment

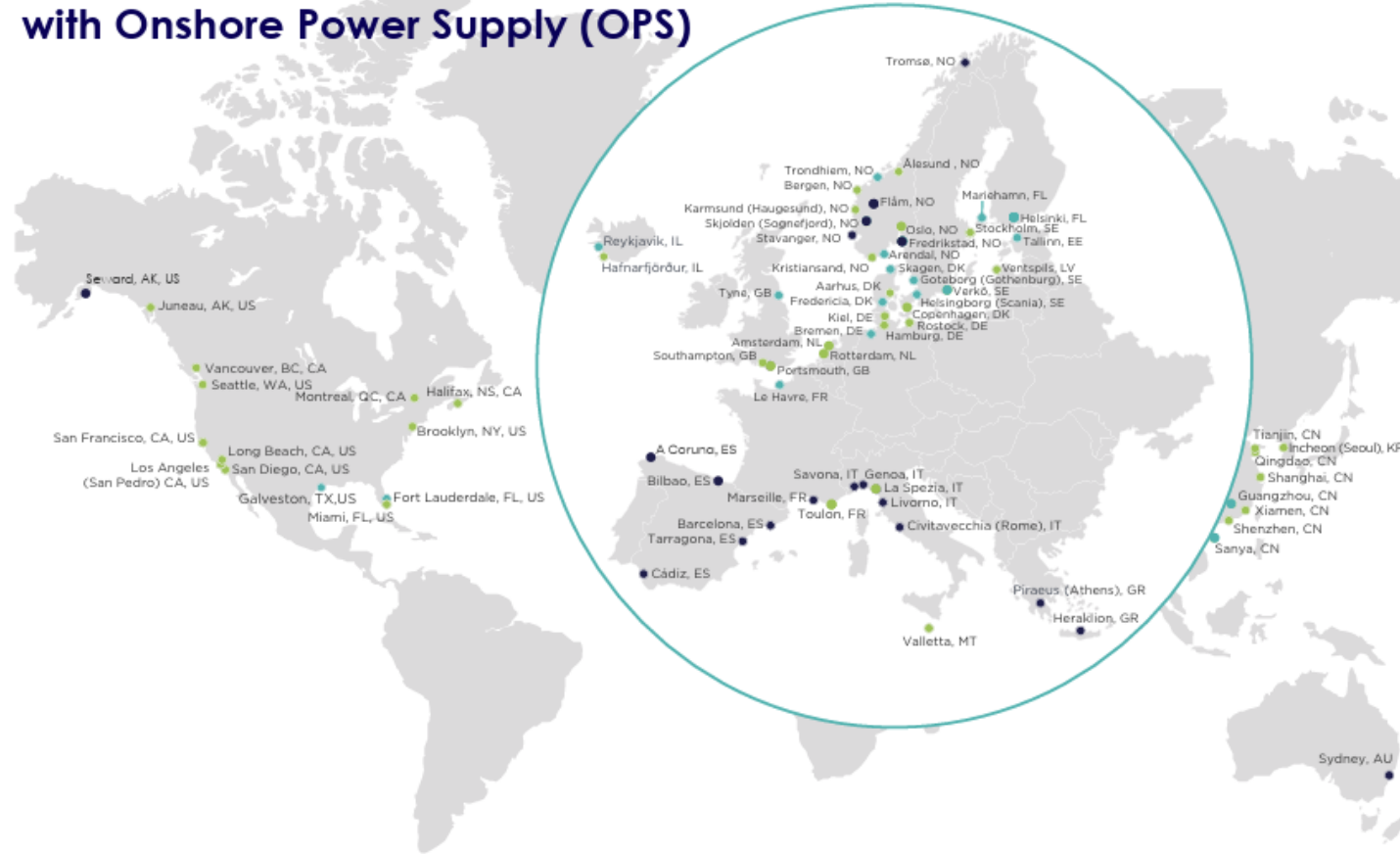
Supporting NSW Government, Port Authority & industry Net Zero target

Delivering a **world-class infrastructure** upgrade

Operating a **sustainable port**– leading in sustainability, license to operate

The Shore Power Family

Ports with at least one cruise berth with Onshore Power Supply (OPS)



Plugging in at ports with onshore power supply (OPS) allows ship engines to be switched off, reducing emissions by up to 98%, depending on the mix of energy sources, according to studies conducted by a number of the world's ports and the U.S. Environmental Protection Agency.

Onshore power supply (OPS) is also referred to as shore electricity (SE), shore connection, shore-to-ship power (SSP), alternative maritime power (AMP), high-voltage shore connection (HVSC), or cold ironing.

ACTIVE 38

CANADA Halifax, NS | Montreal, QC | Vancouver, BC
CHINA Qingdao | Shanghai | Shenzhen | Tianjin | Xiamen
DENMARK Aarhus | Copenhagen
FRANCE Toulon
GERMANY Hamburg | Kiel | Rostock
ICELAND Hafnarfjörður
ITALY La Spezia
LATVIA Ventspils
MALTA Valletta
NETHERLANDS Amsterdam | Rotterdam
NORWAY Ålesund | Bergen | Karmund (Haugesund) | Kristiansand | Oslo
SOUTH KOREA Incheon (Seoul)
SWEDEN Stockholm | Ystad
UK Southampton | Portsmouth
USA Brooklyn, NY | Juneau, AK | Long Beach, CA | Los Angeles (San Pedro), CA | Miami, FL | San Diego, CA | San Francisco, CA | Seattle, WA

FUNDED 20

AUSTRALIA Sydney
BELGIUM Antwerp-Bruges
FRANCE Marseille
GREECE Piraeus (Athens) | Heraklion
ITALY Genoa | Livorno | Civitavecchia (Rome) | Savona
NORWAY Flåm | Fredrikstad | Skjolden | Stavanger | Tromsø
SPAIN A Coruña | Barcelona | Bilbao | Cádiz | Tarragona
USA Seward, AK

PLANNED 30

CANADA Charlottetown, PE
CHINA Guangzhou | Sanya
DENMARK Fredericia | Skagen
ESTONIA Tallinn
FINLAND Helsinki | Mariehamn
FRANCE Bordeaux | Le Havre | Nice
GERMANY Bremen
ICELAND Reykjavik
ITALY Naples
NORWAY Arendal | Trondheim
PORTUGAL Ponta Delgada (Azores) | Figueira da Foz | Leixões (Porto) | Lisbon | Funchal (Madeira)
SPAIN Cartagena | Valencia
SWEDEN Göteborg (Gothenburg) | Helsingborg (Scania) | Verkö
UK Tyne
USA Fort Lauderdale, FL | Port Canaveral, FL | Galveston, TX

Source: CLIA port analysis (as of 14 October 2025)

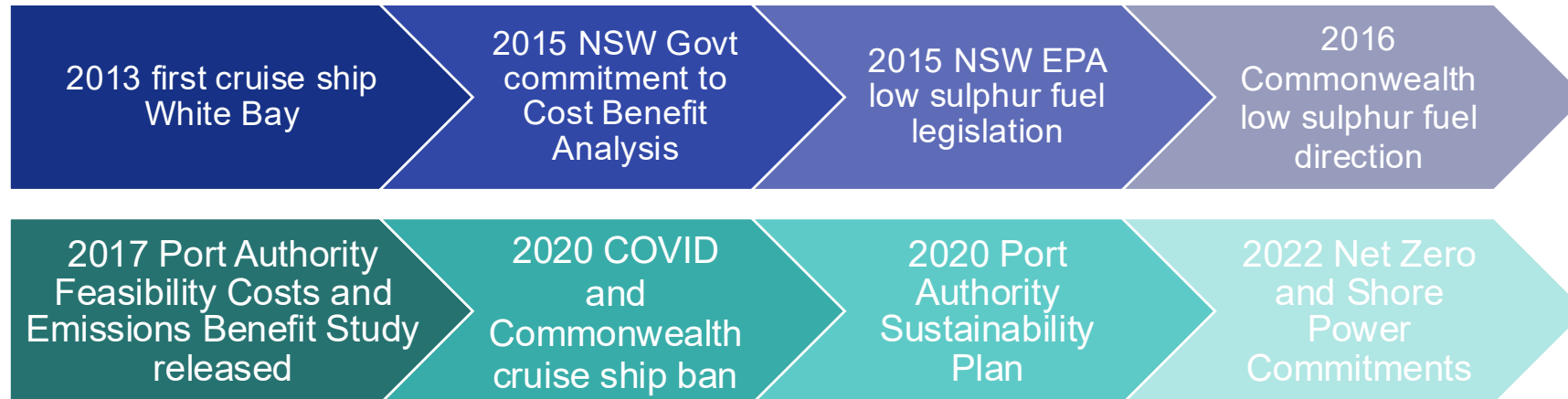
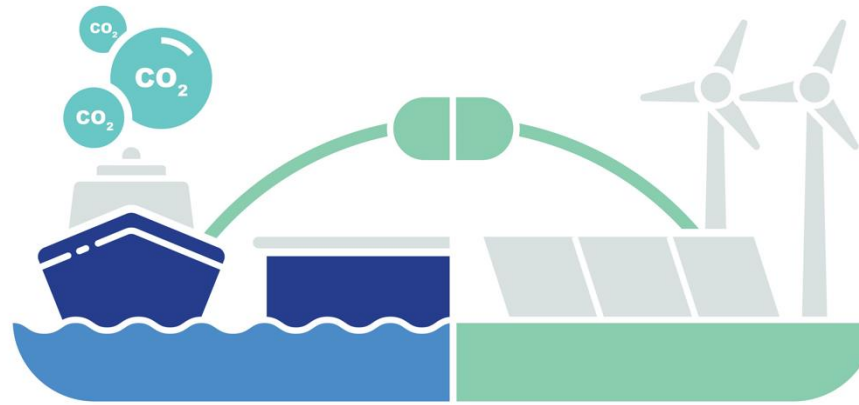
A SHORE THING FOR SUSTAINABILITY

CHRISTA SAMS, SENIOR MANAGER, ENVIRONMENT

11 March 2026



Arriving at Net Zero Strategy & Shore Power



Renewable Shore Power

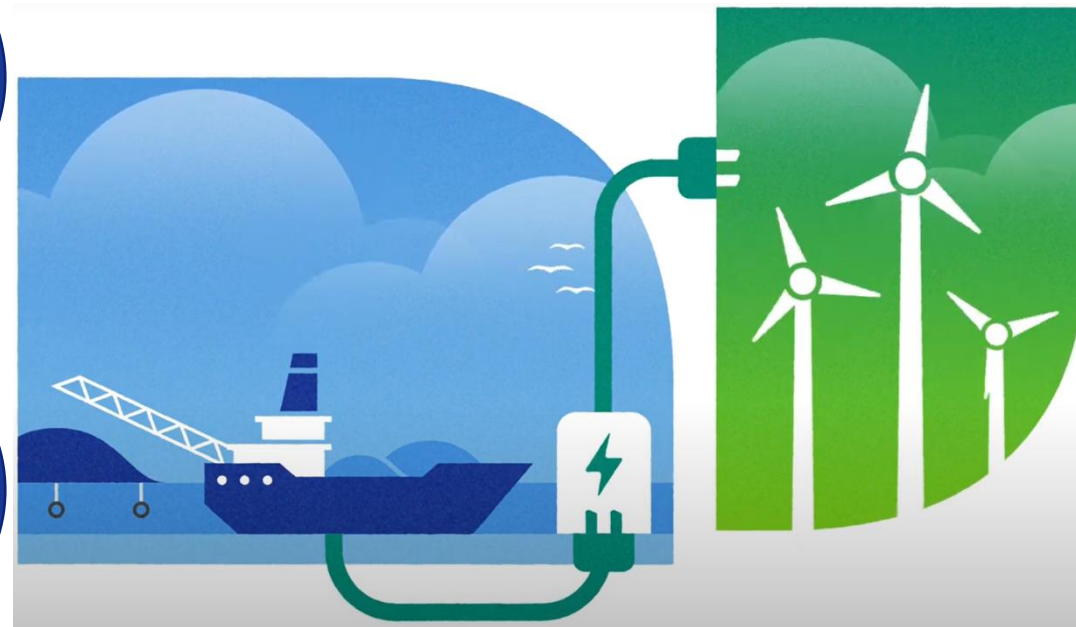
MULTIPLE SUSTAINABILITY BENEFITS

Global

Significant reduction in greenhouse gas emissions

Regional & Local

Reduction in air pollution and odour



Local

Improved social licence

Local

Up to 10dB noise reduction for cruise ships

Vision	Growing trade and tourism in NSW
Purpose	Keeping the ports of NSW safe, efficient and open to the world
Values	Care Accountability Integrity Collaboration Safety

Port Authority of NSW Strategy 2030

Pillar	Service	Community	Sustainability
--------	---------	-----------	----------------

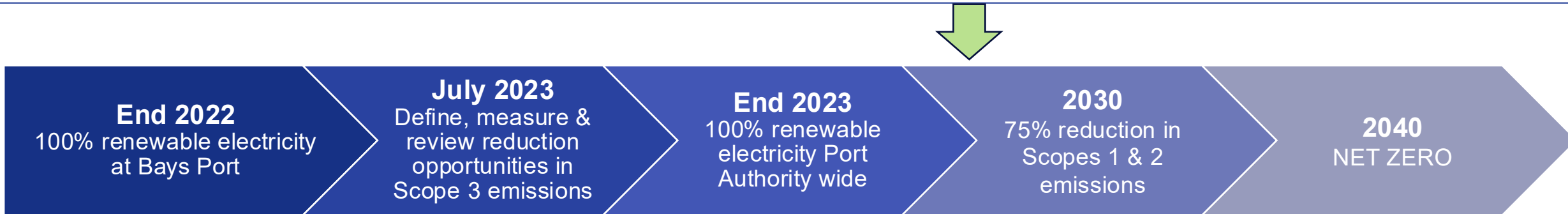
Sustainability Vision
Port Authority of NSW is committed to ongoing collaboration with our people, customers, stakeholders and communities to improve social and environmental outcomes in and around our ports, while delivering economic prosperity for the state of New South Wales through facilitating shipping, tourism and trade

Themes	People	Planet	Prosperity	Partnerships
--------	--------	--------	------------	--------------

Focus Areas	<ul style="list-style-type: none"> ➤ Workplace health and safety ➤ Health and wellbeing ➤ Diversity, equity and inclusion ➤ Professional growth ➤ Governance and integrity 	<ul style="list-style-type: none"> ➤ Climate Change ➤ Nature ➤ Environment and community impacts ➤ Cultural heritage 	<ul style="list-style-type: none"> ➤ Economic performance ➤ Innovation ➤ Assets and infrastructure 	<ul style="list-style-type: none"> ➤ Community responsibility ➤ Customers and stakeholders ➤ Advocacy, research and industry partnerships
-------------	---	--	---	--

Sustainability Framework

Net Zero Commitment



Scope 1

- Vessel fleet efficiencies, fuel reduction, alternative fuel investigations
- Vehicle fleet: future transition to other technologies (eg. electric, hydrogen fuel cell)



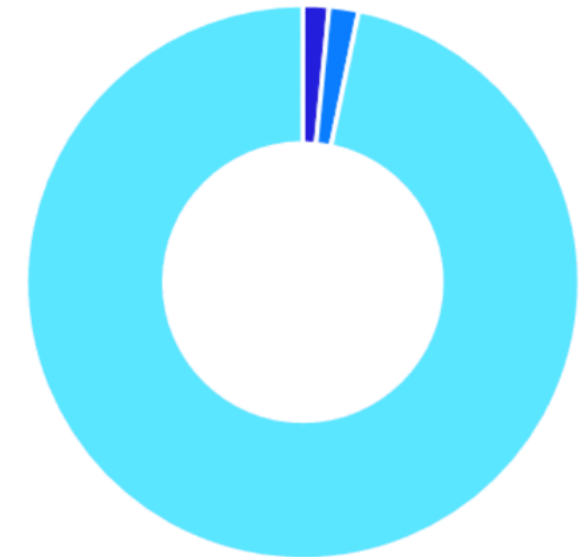
Scope 2

- Net Zero energy strategy implementation
- Building efficiency reviews
- On-site solar
- Renewable electricity



Scope 3

- Scope 3 emissions baseline
- Renewable shore power
- Continue collaborating with stakeholders on reduction opportunities



■ Scope 1 ■ Scope 2 ■ Scope 3

Justification = sustainability

Global decarbonisation including maritime industry

Supporting shipping industry to meet net zero goals

Social licence – local and global

Meeting Port Authority's and NSW Government's sustainability goals

Reducing environmental impacts

Infrastructure investment to support sustainable cruise operations in Sydney

Providing leadership to the port sector and the NSW Government.

