

This is not an ADB material. The views expressed in this document are the views of the author/s and/or their organizations and do not necessarily reflect the views or policies of the Asian Development Bank, or its Board of Governors, or the governments they represent. ADB does not guarantee the accuracy and/or completeness of the material's contents, and accepts no responsibility for any direct or indirect consequence of their use or reliance, whether wholly or partially. Please feel free to contact the authors directly should you have queries.

# The Coral Triangle Initiative on Coral Reefs, Fisheries and Food Security (CTTI-CFF)

## Regional and national frameworks enabling institutionalization of technologies for marine and ocean management and governance

**Dr Frank Keith Griffin**  
**Executive Director**



# FOUNDED IN 2009



**ID MY PH PG SB TL**



The Coral Triangle Initiative on Coral Reefs, Fisheries, and Food Security is the only multilateral, country-led platform in the region focused on safeguarding the Coral Triangle.



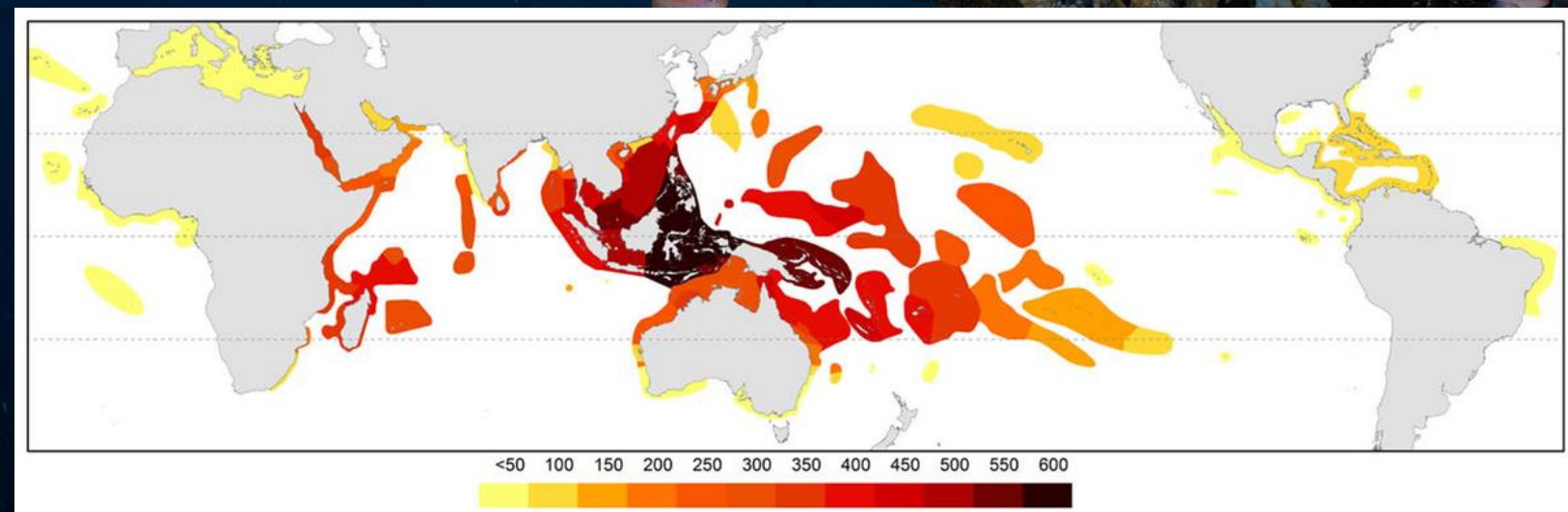
## The Regional Plan of Action 2.0

## Coordinated by the CTI-CFF Regional Secretariat





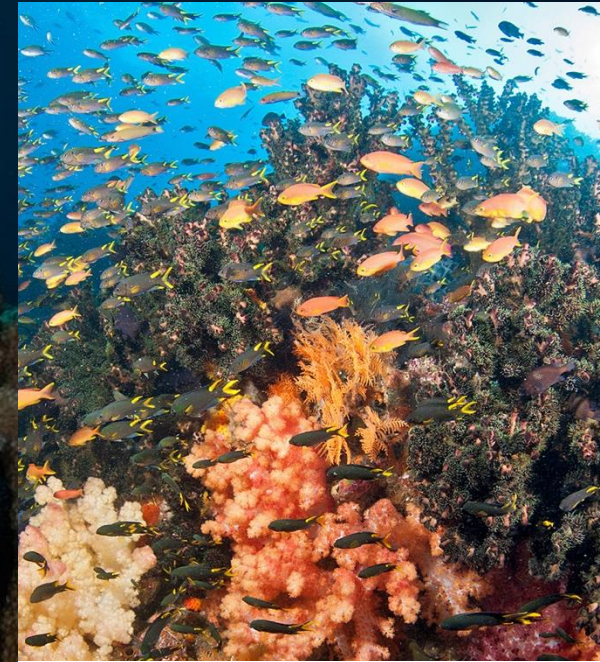
# WHY THE CORAL TRIANGLE MATTERS



**Bursting with marine life and feeding millions, the Coral Triangle is the beating heart of our ocean, where thriving reefs and fisheries sustain economies, ecosystems, and communities.**



**76% of the world's coral species**



**Over 3000 species of reef fish**



**Generates \$6.2 billion per year from tourism**



**Over 2.8 million small-scale fisheries depends on Coral Triangle Reefs**



**Support the livelihoods of over 130 million people**

# HOTSPOTS OF WORLD BIODIVERSITY

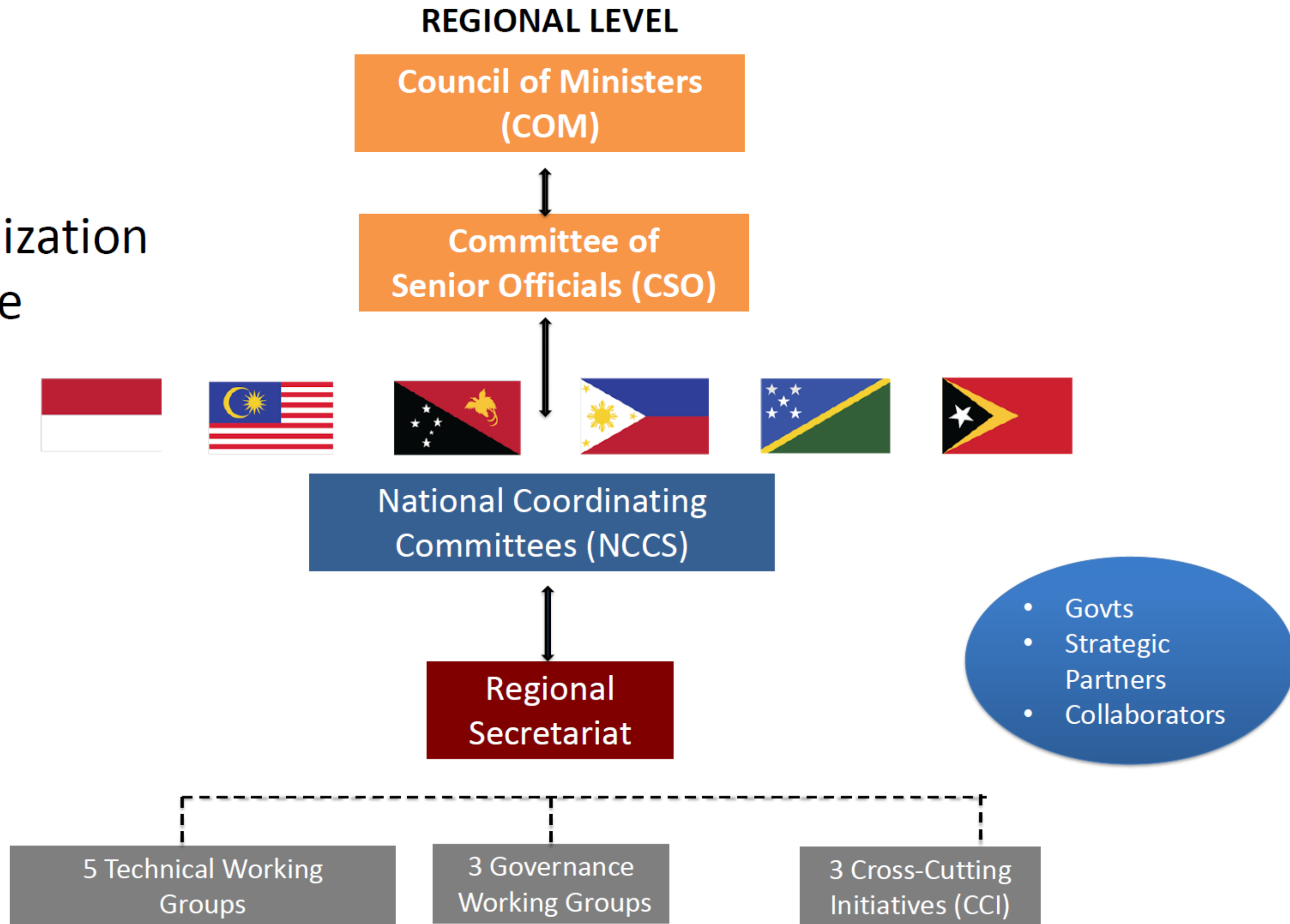


**CORAL TRIANGLE  
INITIATIVE**  
ON CORAL REEFS, FISHERIES  
AND FOOD SECURITY





# CTI-CFF Organization Structure



# Our Current Work

## Technical Working Groups (TWG)

## Governance Working Groups (GWG)

## Cross-Cutting Initiatives (CCI)

Marine Protected Area (MPA)

Seascape

Ecosystem Approach to Fisheries Management (EAFM)

Threatened Species (TS)

Climate Change Adaptation (CCA)

Internal Resource Committee (IRC)

Financial Resource Working Group (FRWG)

Monitoring & Evaluation Working Group (MEWG)

Women Leaders Forum (WLF)

Sustainable Business Forum (SBF)

University Partnership (UP) & Scientific Advisory Group (SAG)

# **Move beyond pilots toward sustained, cross-border implementation**

- **Coral Triangle (CT) Atlas**

- **Green List – IUCN**

- **Mermaid (Coral monitoring) – WCS**

- **Plastics waste – WWF and Ocean Clean Up**

- **Species monitoring – Kosevasi Indonesia in the Lesser-Sunda Seascape**

- **ReefCloud – Coral reef monitoring (AIMS)**

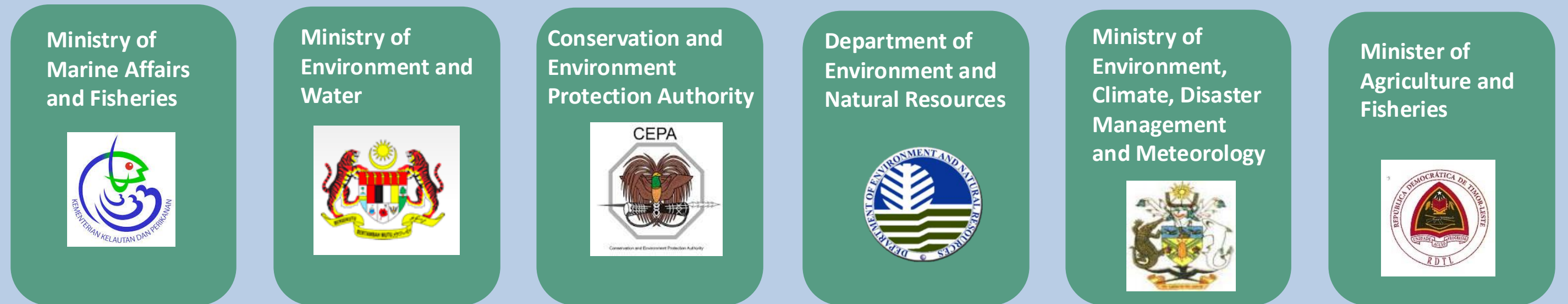
- **SEACONNECT project – CI-GEF and University of Queensland**

# CTI-CFF Member States and Partners

## Member States



## National Coordinating Committees (NCC)



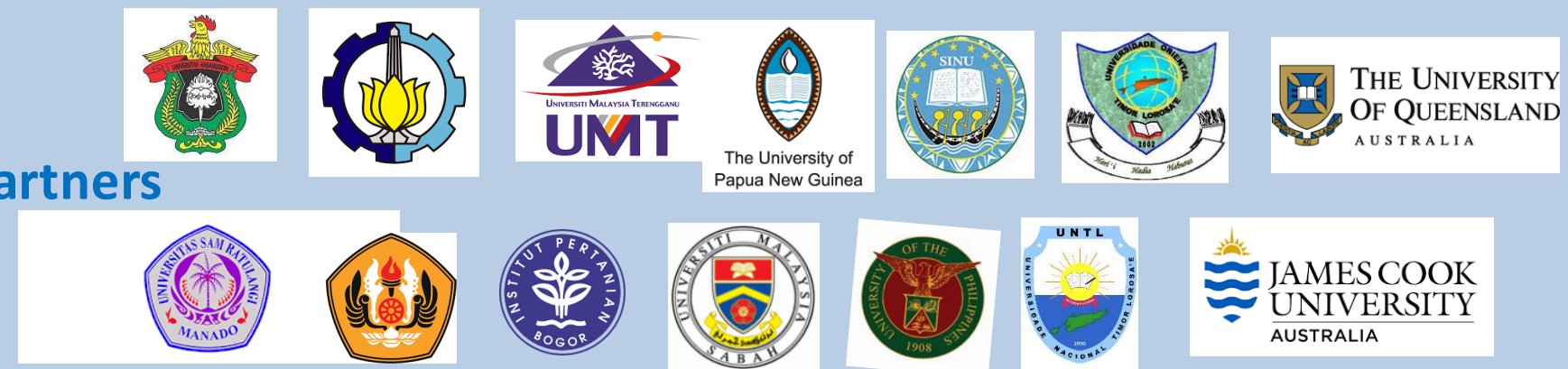
## CTI Partners



## Collaborators



## University Partners





**CORAL TRIANGLE  
INITIATIVE**  
ON CORAL REEFS, FISHERIES  
AND FOOD SECURITY



**THANK YOU**