



Photo by: Moffatt & Nichol

LIGHTNING POINT – GATEWAY TO BAYOU



This is not an ADB material. The views expressed in this document are the views of the author/s and/or their organizations and do not necessarily reflect the views or policies of the Asian Development Bank, or its Board of Governors, or the governments they represent. ADB does not guarantee the accuracy and/or completeness of the material's contents, and accepts no responsibility for any direct or indirect consequence of their use or reliance, whether wholly or partially. Please feel free to contact the authors directly should you have queries.

MARY KATE BROWN | JUNE 18, 2026 | GREEN PORTS WEBINAR SERIES #8



Before Restoration - 2016

Photo by: Moffatt & Nichol

1916

Shell Bell Rd

Google earth

1056 ft

1954

Shell Bell Rd

Google earth

1056 ft

Tour Guide 1997

Imagery Date: 11/18/2017 lat 30.383552° lon -88.266392° elev 0 ft eye alt 4566 ft



1997

Shell Belt Rd



Image U.S. Geological Survey

Google earth

1056 ft

2006

Shell Bell Rd



1056 ft

Google earth

Imagery Date: 6/14/2006 lat 30.387749° lon -88.274379° elev 0 ft eye alt 4566 ft

Tour Guide 1997

2011

Shell Belt Rd



Image USDA Farm Service Agency

Google earth

1056 ft

2013

Shell Belt Rd



1056 ft

Google earth 8

Tour Guide 1997

Imagery Date: 11/2/2013 lat 30.387713° lon -88.274348° elev 0 ft eye alt 4566 ft

2017

Shell Belt Rd

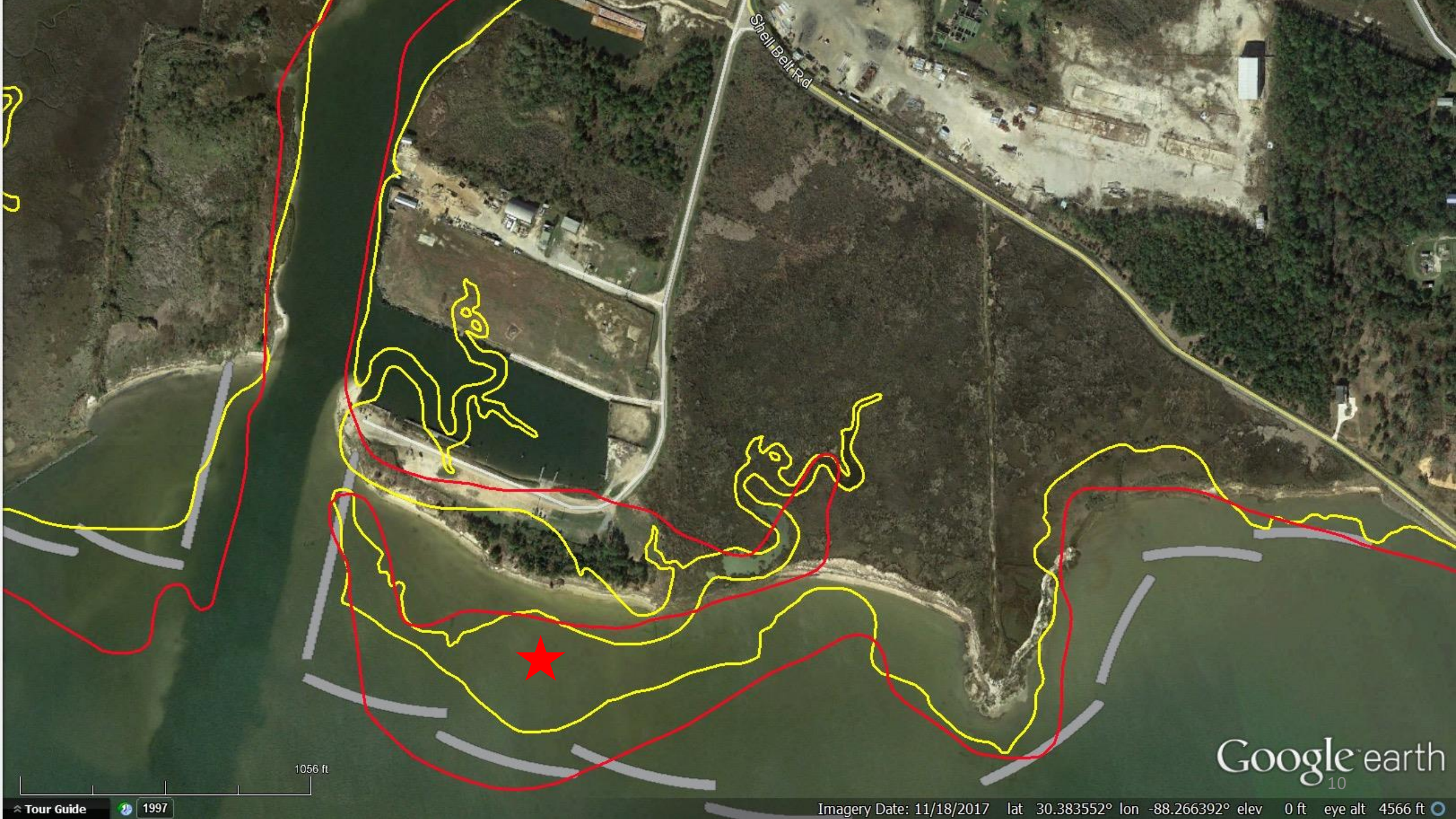


1056 ft

Google earth

lat 30.387713° lon -88.271579° elev 0 ft eye alt 4566 ft

Tour Guide 1997



Shell Belt Rd

Google earth
10

1056 ft

Tour Guide 1997

Imagery Date: 11/18/2017 lat 30.383552° lon -88.266392° elev 0 ft eye alt 4566 ft



- 1. Shoreline Protection
- 2. Habitat Creation
- 3. Public Access
- 4. Beneficial Use of Dredge Material
- 5. Long-term Site Sustainability

Artist Rendering



February 2020

Photo by: Moffatt & Nichol



March 2020 (6 mos)

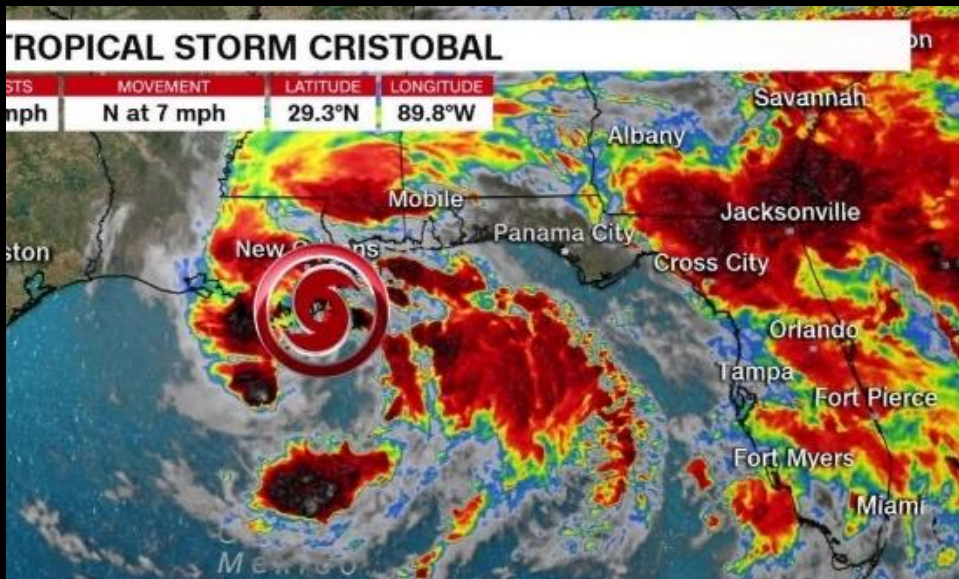
Photo by: Moffatt & Nichol



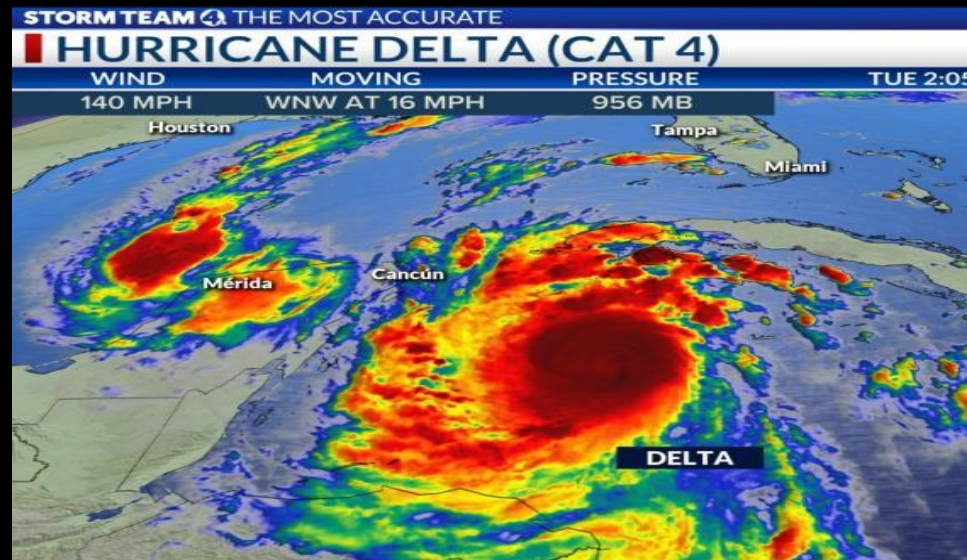
June 2020 (8 mos)

Photo by: Moffatt & Nichol

2020 - The Summer of Storms



June 7 - +4.1 ft



October 10 - +4.4 ft



September 16 - +3.3 ft



October 29 - +7.8 ft



See more photos at
<https://flythecoast.com/>

March 2021

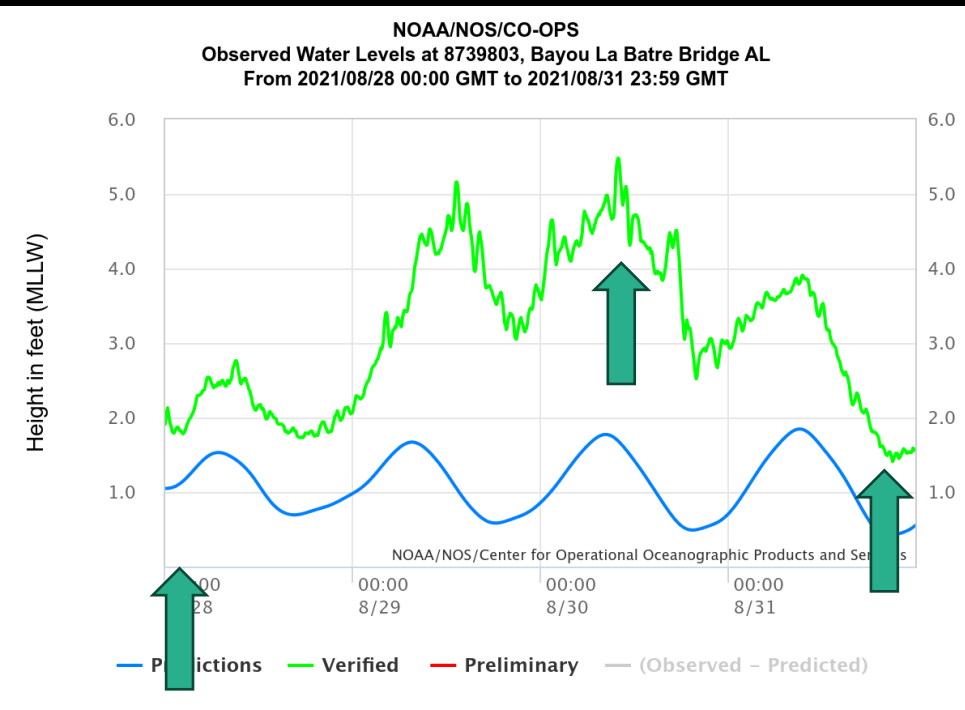
Photo by: Sam St. John



May 2021

Photo by: Sam St. John

HURRICANE IDA – August 28-30, 2021



MOULTRIE



78°F 29.81inHg

MOULTRIECAM

31 AUG 2021 09:52 am



June 2022

Photo by: Sam St. John



October 2023

Photo by: Sam St. John



February 2024

Photo by: Sam St. John



June 2025

Photo by: Sam St. John

PARTNERSHIPS



WILDLIFE
SOLUTIONS, INC.



COASTAL ALABAMA
PARTNERSHIP



Sybil Smith
Foundation

BENEFITS



More than **650 cubic yards** of recycled oyster shell collected from local seafood restaurants of coastal Alabama used to create habitat for birds and terrapins - farm to table to nature!

More than 240,000 cubic yards of sediment used to build over **40 acres** of coastal habitats



Future home to Alabama diamondback terrapins, where University of Alabama-Birmingham is raising **180 terrapins** to release into nearby coastal marsh habitats



Survived **5 named storms** in less than 2 years after completion of construction



50+ bird species observed roosting, feeding and nesting



Engaged with the **local high school students** through transplanting, collecting seeds and planting of native grasses



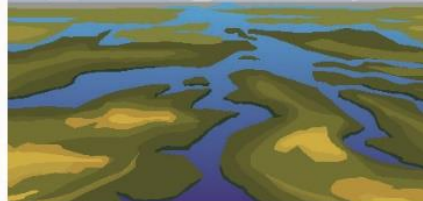
Sustained **8 feet** of storm surge-typical of a 1 in 25-year kind of storm!

90,000 native plants



51,000 tons of rock

Created **2.5 miles** of new tidal creeks



Shoreline width expanded by **600+ feet**, adding a significant buffer for the community of Bayou La Batre for future coastal storms

COMMUNITY



PROTECTING OUR INVESTMENT AND MORE...



LIGHTNING POINT LONG-TERM SITE SUSTAINABILITY PLAN

PRODUCED FOR THE NATURE CONSERVANCY
FUNDED BY NATIONAL FISH AND WILDLIFE
FOUNDATION GULF ENVIRONMENTAL BENEFIT FUND

JUNE 2020



Adaptive Management Activity #1: Thin-layer Placement of Sediment

ADAPTIVE MANAGEMENT ACTIVITY #1: THIN-LAYER PLACEMENT OF SEDIMENT

Steps and critical factors for using TLP as an adaptive management activity at Lightning Point are outlined below and discussed within this section. General background and context respective of each step is provided along with site-specific information, data requirements, and recommendations. Activity recommendations are based on the literature review (Appendix A), site data, regional context, and contractor guidance. Major activity steps include:



STEP 1: PRELIMINARY DESIGN



STEP 2: ENGINEERING AND DESIGN



STEP 3: REGULATIONS AND PERMITTING



STEP 4: CONSTRUCTION



STEP 5: MANAGEMENT AND LOGISTICS



STEP 6: MONITORING

ADAPTIVE MANAGEMENT ACTIVITY #2: BREAKWATER MODIFICATION

City Docks Redevelopment ~\$28M



Welcome to Alabama's new
COMMUNITY FRONT PORCH

CITY DOCKS

THE MARKET
THE MARINA
THE LIGHTHOUSE

An aerial rendering of the City Docks Redevelopment project, similar to the main image but with a different color palette. The image includes several callout circles on the right side, each with a title and a small inset image. The callouts are: 'THE MARKET' (top), 'THE MARINA' (middle), and 'THE LIGHTHOUSE' (bottom). The 'CITY DOCKS' logo is located in the bottom left corner, featuring a circular design with green, yellow, and blue segments. The text 'Welcome to Alabama's new COMMUNITY FRONT PORCH' is written in yellow and white at the top left.

Final Thoughts from Mayor Barnes



“

The Lightning Point Restoration Project is a great example of working with nature. It's taking what is there, increasing it, and making it better.

— Bayou la Batre Mayor Henry Barnes

ON THE GROUND Mayor Barnes is a third generation net maker and third generation elected official. Photo by Alita Films.



Email me:

Mary Kate Brown, Assistant Coastal Programs Director
mkbrown@tnc.org

