

*The views expressed in this presentation are the views of the author/s and do not necessarily reflect the views or policies of the Asian Development Bank, or its Board of Governors, or the governments they represent. ADB does not guarantee the accuracy of the data included in this presentation and accepts no responsibility for any consequence of their use. The countries listed in this presentation do not imply any view on ADB's part as to sovereignty or independent status or necessarily conform to ADB's terminology.*

ADB

# PPP and Private Sector Opportunities in the Pacific

Pacific Infrastructure Business Opportunities Seminar 2026

May 2026

# ADB'S REGIONAL FOOTPRINT



Non-regional offices:  
Washington, DC, USA  
Frankfurt, Germany  
Sydney, Australia

- 69 member countries; 50 in the region
- Japan and the United States are the two largest members

**1966**  
yr of establishment

**AAA**  
S&P / Fitch Ratings

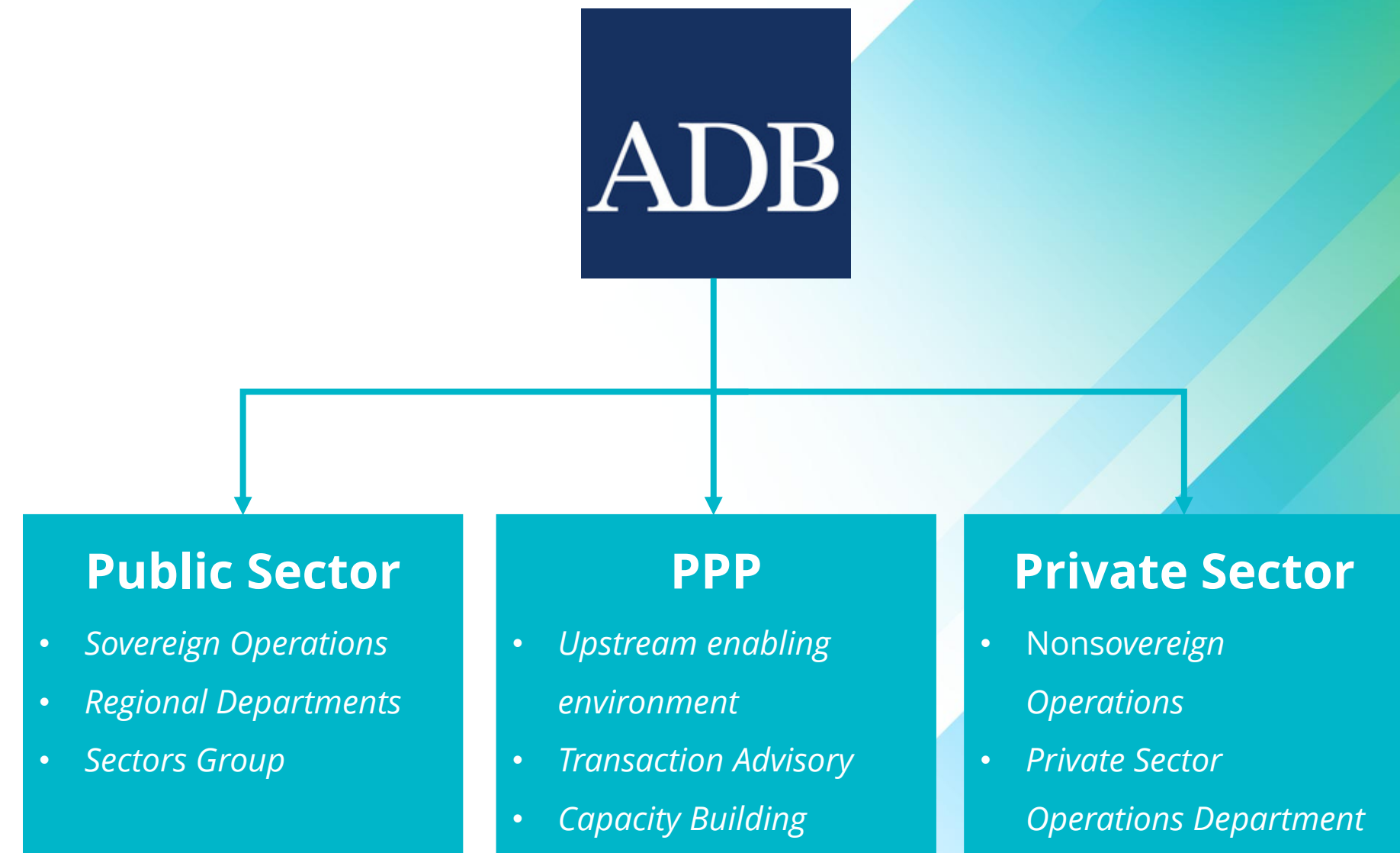
**3,000+**  
employees globally

**32**  
field offices

- ADB Offices
- ADB Private Sector Hub Offices

# ADB'S OPERATIONS

- **Sovereign Operations** provide **public sector financing** through loans, grants, and technical assistance to support national development priorities.
- **Office of Markets Development and Public-Private Partnerships (OMDP)** supports governments in structuring bankable projects, providing transaction advisory, project preparation, and enabling-environment support to expand private sector participation in infrastructure and services.
- **Private Sector Operations Department (PSOD)** provides all nonsovereign financing and investments, structuring **commercially viable transactions across private and state-sponsored enterprises** in developing Asia and the Pacific, while delivering development impact and mobilizing official and commercial cofinancing through trust funds, B-loans, credit enhancement products, and risk transfers.



# Office of Markets Development and Public-Private Partnerships (OMDP)

# ABOUT OMDP

**Office of Markets Development and Public-Private Partnership (OMDP)** is established to enhance the role of the **Asian Development Bank** in supporting and enabling governments of its developing member countries **to secure greater private investment** and **foster dynamic private sector-led growth** across Asia and the Pacific.

**Markets development** is central to our work. Through market-driven solutions, we **help close infrastructure gaps, accelerate climate action, and strengthen institutional capacity.**

[WEBSITE](#)

[VIDEO](#)

[FLYER](#)

# OUR SERVICES



## Capacity Building | Enabling Environment

Raise awareness, enhance government capacity, establish policies and frameworks, identify potential projects, and provide support to facilitate Public-Private Partnership (PPP) development



## Project Preparation and Transaction Advisory Services

Assist in designing and preparing bankable PPP projects through **transaction advisory services** and continuously share knowledge sharing and support to enhance the enabling environment for private sector investment



## Project Monitoring

Provide post-commercial close support for contract management and project monitoring to ensure successful implementation of the PPP projects we advise.

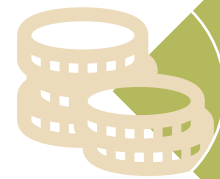
# MISSION STATEMENT

*“To improve the lives of Developing Member Countries (DMC) citizens by mobilizing and leveraging private sector innovation, technology, efficiency, and capital”*

## Key Opportunities



**Markets Development for Climate-Resilient Growth:** OMDP is unlocking private investment by fostering markets that support climate-resilient infrastructure (carbon and other credit markets)



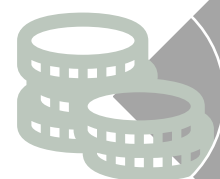
**Structuring Bankable Projects :** OMDP advises governments to attract private sector capital through developing bankable projects.



**Advancing Markets Development for Private Sector Investment:** Key role in shaping environments that attract private capital through policy reforms and building institutional capacity.

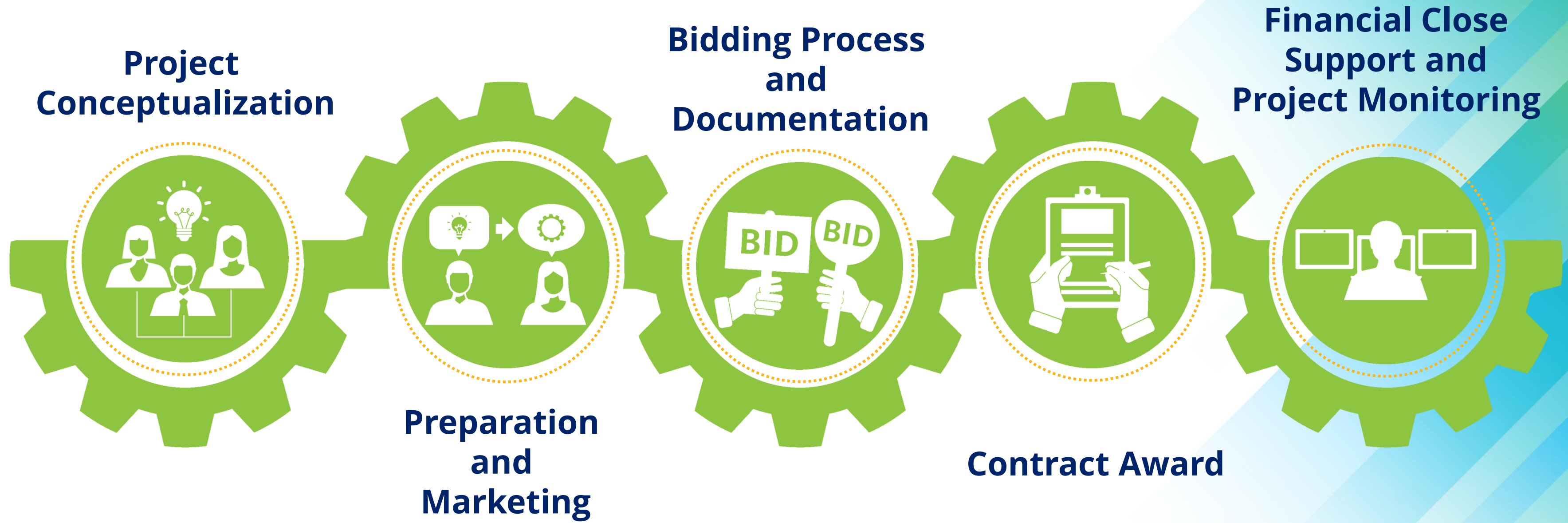


**Expanding Growth and Climate Opportunities in the Pacific:** With rising climate risks, OMDP is capitalizing on opportunities to deliver resilient infrastructure in the Pacific.



**Asset Monetization and Energy Transition Mechanism (ETM):** OMDP support enables governments to reinvest in greener initiatives while accelerating the transition to renewable energy through private capital mobilization.

# TRANSACTION ADVISORY SERVICES



# MARKETS DEVELOPMENT AND CATALYZING PRIVATE SECTOR DEVELOPMENT



## Upstream

Operationalization – regulatory/  
institutional framework

Project pipeline selection

Development of Article 6  
Strategy

Training and capacity building

Promoting climate resilience



## Midstream

Project Preparation and  
Structuring

Transaction Advisory Services

Innovative Financing Solutions

Pilot carbon credit markets



## Downstream

Contract management and  
oversight

Carbon credit sales

# Upcoming PPP Opportunities in the Pacific Region

# Renewable Energy IPP (Samoa)

## SITE



## PROJECT OVERVIEW

LOCATION	Fiaga, Upolu-Samoa (government-owned land)
SECTOR	Energy
NAME OF CLIENT	Electric Power Corporation
ESTIMATED PROJECT SIZE	\$40 million

### Project Background and Description

- Samoa relies heavily on imported fossil fuels, which account for almost 70% of electricity generation.
- The Samoan Government has an established goal of 70% renewable energy generation by 2031.
- To increase power from renewable energy, EPC has identified a site for the development of a ground-mounted solar and BESS project.
- ADB OMDP is supporting EPC as a transaction advisor to develop the Solar + BESS project.

### Project Scope of Work

- Design, build, finance, operate and maintain 25 MW Solar PV plant and 50 MWh BESS

### Project Status

- Technical studies conducted including topo and Geotech studies, grid study, detailed technical study, and PEAR (EIA)
- Legal due diligence conducted, bidding document including PPA under finalization
- **Estimated start of bidding process: June 2026**



Fiaga Site (13° 53' 05.32" S , 171° 53' 03.51 W)

# National ID and eKYC (Fiji)

## PROJECT OVERVIEW

<b>LOCATION</b>	Fiji
<b>NAME OF CLIENT</b>	Reserve Bank of Fiji
<b>ESTIMATED PROJECT SIZE</b>	\$35 million

### Project Background and Description

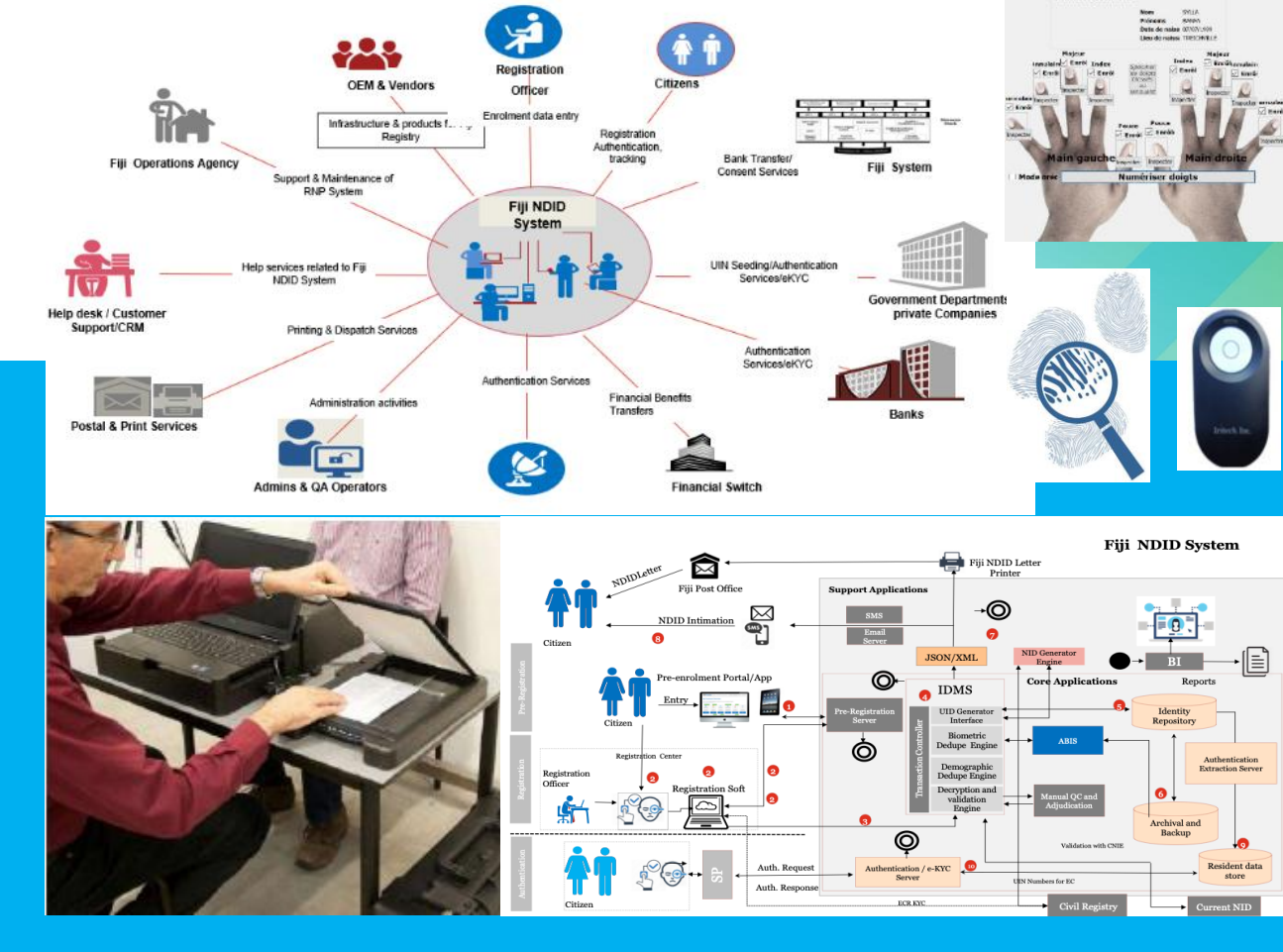
- The Project involves supporting the RBF to develop and implement a National Digital Identification (NDID) program along with an electronic Know Your Customer (eKYC) solution for banking customers as the first use case. The National ID would be a digital identity using a random unique number, biographical data (name, date of birth, etc.) and biometric information.
- The project is expected to result in lower cost of services for citizens, better targeted subsidies, more efficient remittance, and greater financial inclusion.

### Project Scope of Work

- Design, testing, commissioning of Core ID Platform
- Design, developing, customizing, testing, and deploying support applications and System Integration including eKYC integration framework
- Deployment of registration Kits and registration of citizens/resident for issuance of National ID
- Operations and maintenance

### Project Status

- The draft legislation prepared, and public consultations conducted, currently under review by the government.
- An inter-ministerial working groups are working towards finalization of ID system design, together with the development of related policies, manuals, and procurement of a private implementation partner (Managed Service Provider).
- Estimated start of bidding process: Nov. 2026**



# Solid Waste Management PPP (Fiji)

## PROJECT AND MANDATE OVERVIEW

LOCATION	Fiji
SECTOR	Water and Urban Development
NAME OF CLIENT	Ministry of Local Government (MLG)
ESTIMATED PROJECT SIZE	TBD

### Project Background and Description

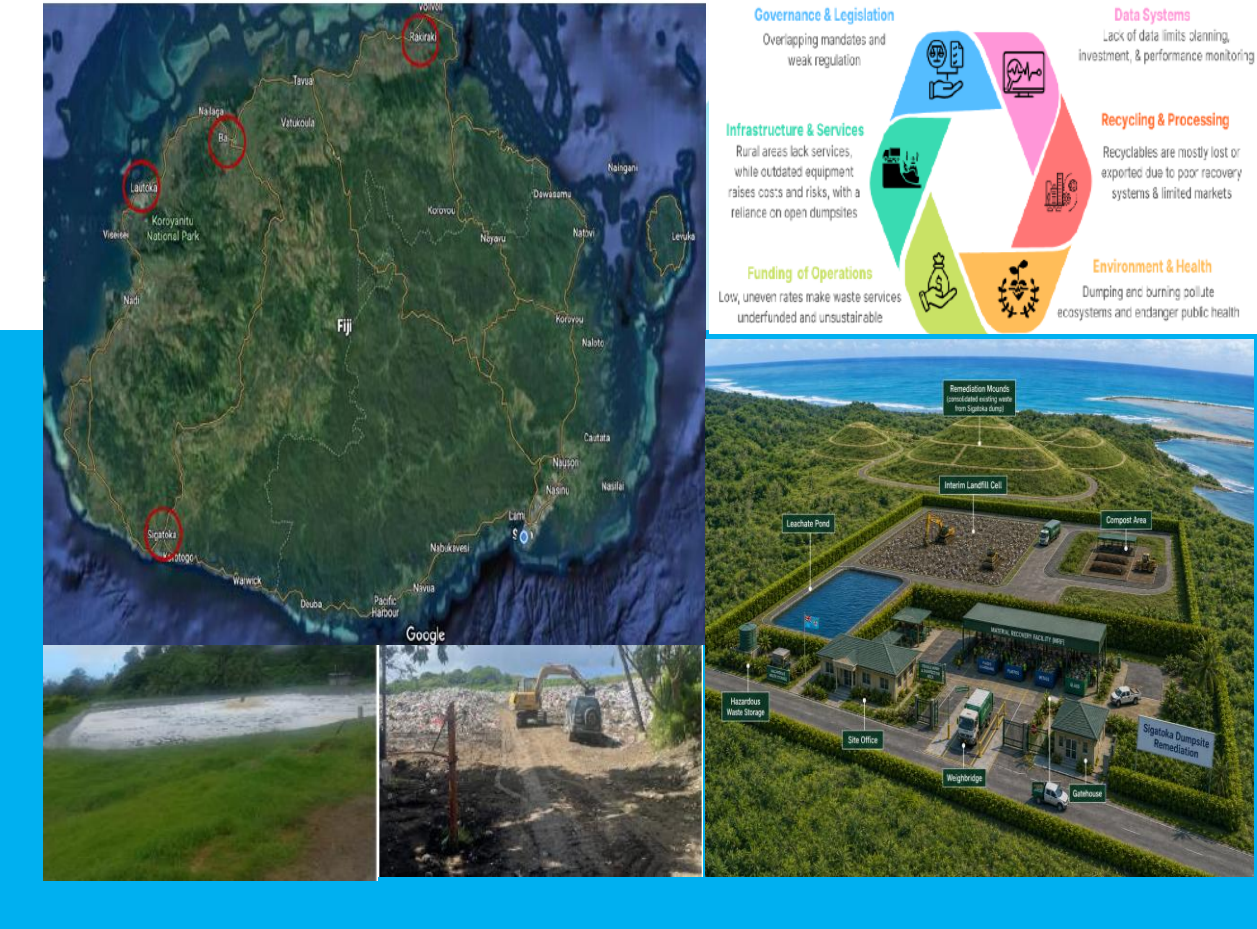
- The MLG has identified the need to develop a long-term solution to growing waste management demands in Fiji.
- The project will develop and operate a new sanitary landfill and remediate four existing open dumpsites in the Western Division of Fiji, covering Sigatoka, Lautoka, Ba and Rakiraki.
- A suitable public-private partnership structure will be developed to mobilize private sector expertise, ensuring the most efficient and effective development and implementation of the project.

### Project Scope of Work

- Phase 1: Remediation of existing dumpsite and interim landfill facility at Sigatoka followed by remediation or closure of other dumpsites
- Phase 2: Integrated Solid Waste Management (ISWM) Project including engineered sanitary landfill, transfer station, collection and transport system

### Project Status

- Remediation plan has been developed for existing dumpsites
- A few sites for proposed landfill and transfer stations identified and MLG is working with Ministry of Lands to get legal ownership of sites



The infographic details the following areas:

- Governance & Legislation:** Overlapping mandates and weak regulation.
- Data Systems:** Lack of data limits planning, investment, & performance monitoring.
- Infrastructure & Services:** Rural areas lack services, while outdated equipment raises costs and risks, with a reliance on open dumpsites.
- Recycling & Processing:** Recyclables are mostly lost or exported due to poor recovery systems & limited markets.
- Funding of Operations:** Low, uneven rates make waste services underfunded and unsustainable.
- Environment & Health:** Dumping and burning pollute ecosystems and endanger public health.

The map shows the locations of Sigatoka, Lautoka, Ba, and Rakiraki in the Western Division of Fiji. The photograph shows a sanitary landfill site with various components like a leachate pond, compost area, and site office.

# Renewable Energy IPP (Fiji)

## PROJECT AND MANDATE OVERVIEW

LOCATION	Fiji
SECTOR	Energy
NAME OF CLIENT	Energy Fiji Limited
ESTIMATED PROJECT SIZE	\$60-150 million

### Project Background and Description

- Support Fiji’s target of 100% renewable electricity generation by 2036.
- Reduce reliance on imported fossil fuels, which currently account for ~40% of generation.
- Mobilize private investment for solar, wind, and BESS-enabled renewable projects.
- Initial TAS focus: Solar PV opportunities, including floating and ground-mounted projects.
- ADB is supporting feasibility study, due diligence, and PPP transaction process

### Project Scope of Work

- Design, build, finance, operate and maintain Solar PV plant and/or BESS facilities

### Project Status

- EFL has identified potential sites for the proposed project
- Technical and legal feasibility assessments under way



# Agri-Processing Facility (Vanuatu)

## PROJECT AND MANDATE OVERVIEW

LOCATION	Vanuatu
SECTOR	Agriculture
NAME OF CLIENT	Ministry of Trade, Tourism, Commerce and Ni Vanuatu Business
ESTIMATED PROJECT SIZE	TBC

### Project Background and Description

- Develop an integrated agro-processing facility in Espiritu Santo under a PPP model.
- Initial focus on coconut processing, with flexibility to include other priority crops and value chains.
- Shift from raw and low-value exports to higher-value, locally processed products.
- Leverage Santo’s agricultural feedstock base, rural producer network, and logistics connectivity.
- Reduce waste by improving processing of agricultural inputs and by-products.
- Support farmer incomes, rural livelihoods, import substitution, and export diversification.

### Project Scope of Work

- Development of integrated agro-processing plant and ancillary facilities
- Processing coconut into higher-value products, with potential inclusion of bioenergy products
- Creation of export market platforms



# Solar IPP (Solomon Islands)

## PROJECT AND MANDATE OVERVIEW

LOCATION	Solomon Islands
SECTOR	Energy
NAME OF CLIENT	Solomon Power
ESTIMATED PROJECT SIZE	TBC

### Project Background and Description

- Reduce reliance on imported fossil fuels, which currently account for ~98% of generation.
- Mobilize private investment for grid connected solar (and potentially BESS-enabled) renewable projects.
- ADB OMDP is supporting Solomon Power as a transaction advisor to develop the project.
- Support includes feasibility study, due diligence, transaction structuring and PPP tender process.

### Project Scope of Work

- Design, build, finance, operate and maintain Solar PV plant (and potentially BESS facilities)



# Renewable Energy IPP (FSM)

## PROJECT AND MANDATE OVERVIEW

LOCATION	Federal States of Micronesia
SECTOR	Energy & Water
NAME OF CLIENT	DORD and the utilities of the 4 states
ESTIMATED PROJECT SIZE	TBC

### Project Background and Description

- Design, finance, build, own, and operate an est. cumulative capacity of 12-15 MW solar photovoltaic (PV) (across the 4 states) combined with productive uses of energy including potable water.
- With average cost of electricity tariffs in the range of US 0.48-0.55/kWh and lack of reliable long-term O&M support for EPC funded power projects, the FSM is keen to explore the IPP approach.

### Project Scope of Work

- Design, build, finance, operate and maintain Solar PV plant and BESS project(s)



# Private Sector Operations Department (PSOD)

# WHO WE ARE

We lead all private sector financing and investments at ADB—structuring and funding transactions across the capital structure in both **private and state-owned enterprises**. Our operations span a broad range of industry sectors across developing countries.

We prioritize **commercially sound investments** that generate strong **development outcomes**.

A core focus is **direct mobilization of capital**. We collaborate with reputable financial institutions to form syndicates of lenders, distribute exposure, or offer credit enhancement to attract private capital by reducing risk.



# WHY WORK WITH US

We can multiply the development impact of our interventions by leveraging our:



Relationships with governments, private sector clients, and other DFIs



Advisory services for public-private partnerships and business incubation



Capacity to mobilize more private sector capital



Knowledge of developing member countries

# THE CASE FOR PRIVATE SECTOR FINANCING

Asia and the Pacific region faces a huge financing gap to achieve its Sustainable Development Goals (SDGs) targets.

Governments do not have the financial capacity to address this gap on their own.

It has the ability to mobilize capital, scale innovative solutions, and create jobs.

It also has the capacity to address business and financial challenges hindering inclusive and sustainable progress.

The private sector is the largest contributor to economic growth in Asia and the Pacific.

## Business and financial obstacles to inclusive, sustainable growth

Following challenges in business environments and financial markets are hindering inclusive and sustainable progress:

- Supply of long- and short-term financing including local currency.
- Lagging Asian capital markets (e.g., project bonds and climate bonds).
- Availability of key financial market products (e.g., leasing, insurance and affordable housing loans).
- Gaps in financial inclusion.

# WHAT WE OFFER

We offer a **comprehensive suite of solutions**, including debt financing, equity, capital mobilization, and technical assistance, to catalyze impactful and sustainable private sector growth. Furthermore, we also provide trade and supply chain finance, microfinance, and support a differentiated approach to private sector in the Pacific, invest in startups, finance small and medium-sized enterprises in frontier markets and support financial institutions and their women borrowers.

## Debt Financing



We provide hard currency loans, mezzanine financing (combination of debt and equity), and local currency loans in select markets. We price loans based on market rates and risks, offering adjustable rates above Secured Overnight Financing Rate or Euro interbank rate, depending on the currency. We support capital market issuances, with particular focus on ESG and climate bonds.

## Mobilization



*Loan syndications, parallel funds, unfunded distribution, environmental and social (E&S) coordination, and project specific guarantees*

We maximize the impact of private sector operations by mobilizing capital from both private and public sources, to support investment, trade, and capital flows into developing member countries. We collaborate with reputable financial institutions to form syndicates of lenders, distribute exposure, or offer credit enhancement to attract private capital by reducing risk.

## Equity



*Direct investments, private equity funds, and selective co-investments.*

We invest equity at every stage of growth to help companies scale, drive innovation, and deliver inclusive and sustainable development.

## Technical Assistance



*Tailored advisory services and technical assistance to strengthen private sector capacity and promote sustainable, high-impact investments*

Our support helps partners align with ADB's environmental, social, and governance standards and ensures projects deliver measurable development outcomes. We also offer training and capacity-building programs to empower private sector stakeholders with the knowledge and tools needed for long-term success, subject to applicable cost recovery criteria.

# PRIVATE SECTOR PROGRAMS

## TRADE AND SUPPLY CHAIN FINANCE PROGRAM

*Help close market gaps by providing guarantees and loans that mobilize capital, diversify trade and supply chains, and promote inclusive access to finance.*

We work with banks, businesses, and development partners to support resilient, transparent, and low-carbon trade, driving sustainable growth and stronger development outcomes.

## MICROFINANCE PROGRAM

*Promote local currency lending to microfinance institutions through guarantees and risk participation.*

We support financial inclusion in the Asia and Pacific by encouraging international and local banks to increase their lending to microfinance institutions (MFIs) and by providing capacity building support.

## ADB VENTURES

*Support and invest in startups offering impact technology solutions.*

We invest in early-stage companies with technology enabled solutions and high potential to scale and drive transformative development impact in emerging markets across Asia and the Pacific.

## WAYFINDER PROGRAM

*Strengthen the role of the private sector in national and regional development across ADB's Pacific Developing Member Countries (PDMCs).*

We adopt a differentiated approach to private sector operations in the Pacific to better support the fragile and conflict-affected situations and small island developing states, improving the effectiveness of ADB's private sector operations and helping ADB PDMCs achieve their development goals.

## ADB FRONTIER

*Develop local capital markets and support businesses that are building local industries .*

We finance fast growing small and medium-sized enterprises in frontier markets. These SMEs are small businesses growing at or above 20% year-on-year for three or more consecutive years.

## WOMEN'S FINANCE EXCHANGE

*Support financial institutions and their women borrowers through innovative tech-enabled solutions, digital support, and capacity building.*

We empower women-owned and led businesses in Asia and the Pacific by increasing the capacity of financial institutions to provide inclusive and sustainable finance leveraging cutting-edge technologies.

# OUR FOCUS AREAS

We focus on sectors and thematic priorities that generate high development impact and contribute to accelerated, sustainable, and inclusive growth across Asia and the Pacific.



Agribusiness



Critical Minerals-to-Manufacturing



Energy



Environmental Infrastructure



Finance



Health and Education



Information and Communication Technology



Multisector



Trade



Transport



Waste Management and Circular Economy



Water and Urban Development

# KEY HIGHLIGHTS, 2025

## Private Sector Development

### Financing for private investment

**\$8.56 bn** ↑ Up 80% vs. 2024

Of which, private direct capital mobilization

**\$3.99 bn** ↑ Up 163% vs. 2024

PSOD exceeded its target for Financing for Private Investment by 63% and its target for Private Direct Mobilization by 141%

Financing for private investments is adjusted to account for risk transfer arrangements under Project OCR and Private Direct Mobilization.

### Number of Committed Projects and Total Financing for Private Investments by Sector

Sector	Number of Committed Projects	Total Financing (\$ billion)
Finance / Financial Institutions	22	2.59
Energy	9	3.20
Public Sector Management	1	0.15
Water and Urban	2	0.07
Agriculture	2	0.53
Information and Communication Technology	3	0.13
Transport	4	0.21
Industry and Trade	4	0.34
Health	4	0.36
Education	1	0.07

The amount on Public Sector Management comes from private capital mobilized through a sovereign policy-based guarantee.

### PSOD OCR Commitments

Projects, Trade Supply Chain Finance, and Micro Finance Program

**\$5.50 bn** ↑ Up 14% vs. 2024

Program Commitments: \$1.87 bn Short-term, \$0.53 bn Long-term

Project Commitments: \$3.10 bn

PSOD achieved its WPBF OCR projection of \$5.09 billion

Average deal size at \$63 mn ↑ Up 40% vs. 2024

Trade and Supply Chain Transactions	24,722
Microfinance Transactions	851,544
Projects Committed	49

### Trade and Supply Chain Finance Program

OCR	\$2.2 bn
Mobilization	\$3.5 bn
Total Value of Transactions	\$5.7 bn

### Microfinance Program

OCR	\$0.2 bn
Mobilization	\$0.2 bn
Total Value of Transactions	\$0.4 bn

### Resilience and Empowerment

#### Financing for FCAS and SIDS

**\$22 mn**

Financing for FCAS and SIDS as % of PSOD's Project OCR: **1%** (Target: 1%)

### Climate Action

#### Financing for climate action amount OCR

**\$1.61 bn**

Financing for climate action as % of PSOD's Project OCR: **52%** (Target: 58%)

#### Operations promoting gender equality

**53%** of committed projects (Target: 52%)

#### Operations in frontier economies

**27%** of committed projects (Target: 23%)

### Regional Cooperation and Public Goods

#### Operations supporting regional cooperation and integration

**6%** of committed projects (Target: 10%)

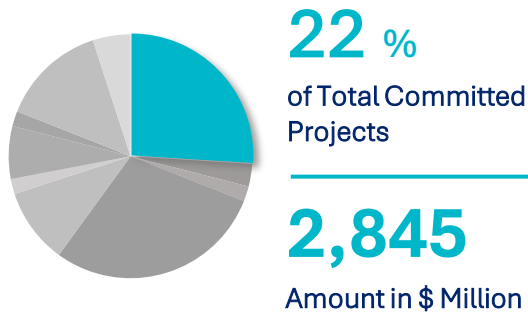
**Notes:**

- FCAS = fragile and conflict-affected situations, OCR = ordinary capital resources, PSOD = Private Sector Operations Department, SIDS = small island developing states, WPBF = Work Program and Budget Framework
- Based on preliminary data available as of 3 February 2026. Figures are subject to validation and may change. Numbers may not sum precisely because of rounding.

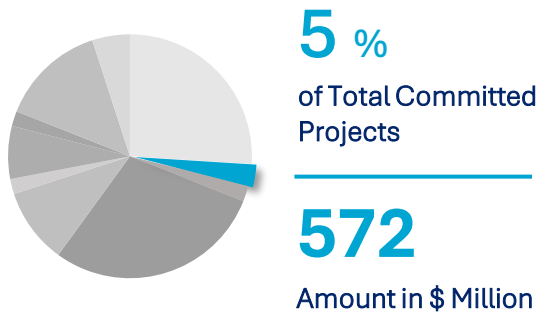
# PRIVATE SECTOR OPERATIONS DEPARTMENT'S PORTFOLIO, 2025



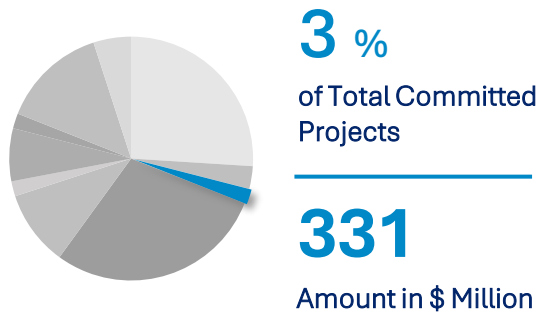
## CLEAN ENERGY



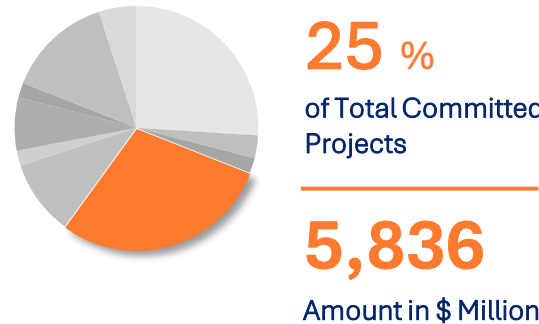
## WATER & URBAN INFRASTRUCTURES & SERVICES



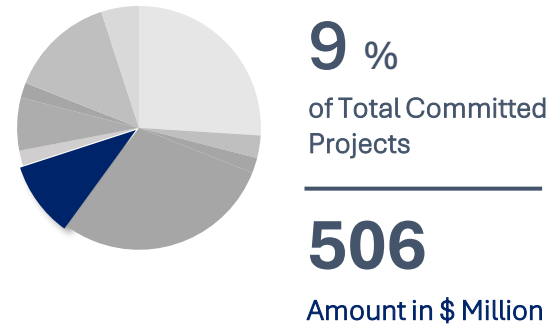
## INFORMATION AND COMMUNICATION TECHNOLOGY



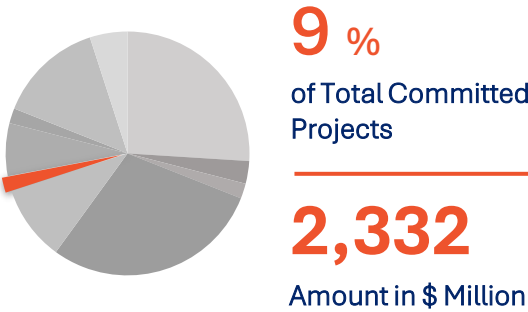
## FINANCIAL INSTITUTIONS



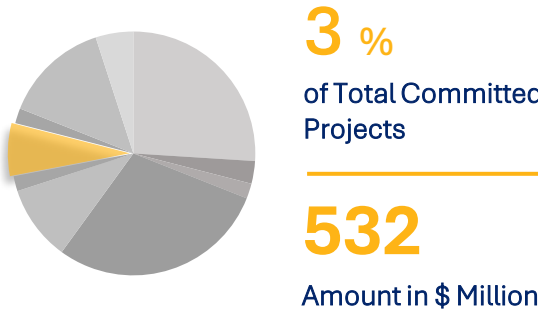
## AGRIBUSINESS



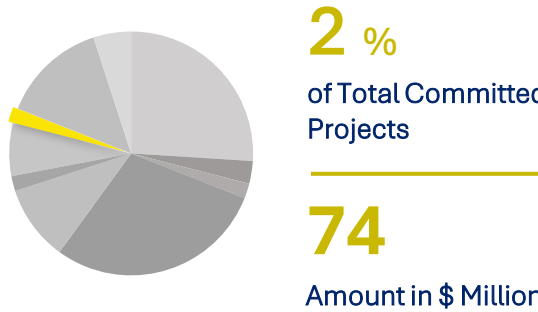
## CONVENTIONAL ENERGY



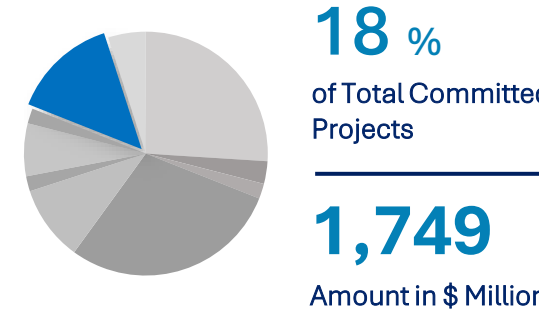
## TRANSPORT



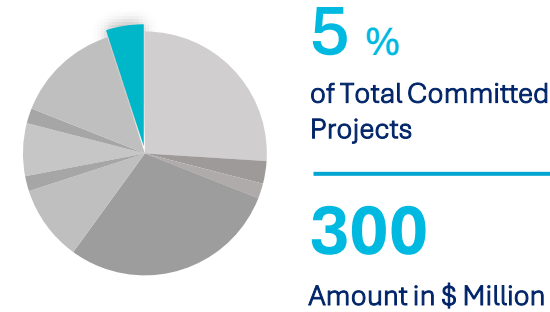
## INDUSTRY AND TRADE



## PRIVATE EQUITY FUND



## SOCIAL SECTORS



# ADB Wayfinder (Pacific) Program

# PROGRAM RATIONALE

Addresses Pacific private sector client needs

Responds to Pacific Governor's statements and aligns with CPS priorities

Supports ADB's Strategy 2030, FCAS/SIDS, President's Planning Directions 2025

Complements other ADB PSD initiatives in the Pacific



Client Centric Approach

DMC Government Alignment

ADB Strategic Focus

Upstream-Midstream-Downstream Synergies

# REGIONAL CHALLENGES

Pacific DMCs face several challenges including:



(i) Narrow and vulnerable economies



(ii) High-cost structures



(iii) Capacity and governance constraints



(iv) Unequal access to services and opportunity



(v) Distance from major markets

# PROGRAM OVERVIEW

The private sector contributes **an average of 44% of the Pacific GDP** (vs over 60% globally). More private investment is needed to drive economic growth and expand markets in the Pacific.

Approved in June 2025, the ADB Wayfinder Program will:

- Support a **differentiated approach** to nonsovereign operations and sustainable private sector development in the Pacific.
- Help to support the **fragile and conflict-affected situations (FCAS) and small island developing states (SIDS)** approach in the Pacific.

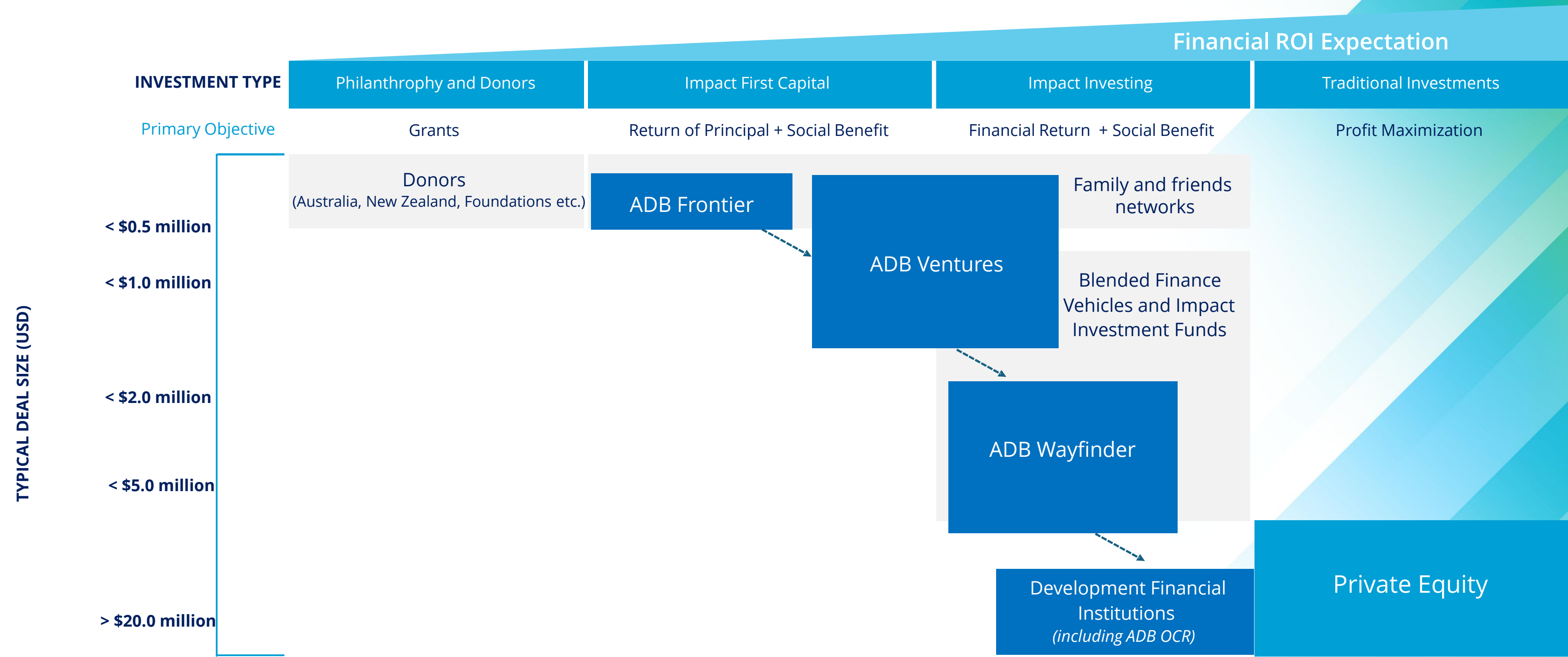
- **Total program package** of up to **\$165 million** comprising:
  - Up to **\$80 million** loans and guarantees from Ordinary Capital Resources (OCR)
  - Up to **\$15 million** allocation within Microfinance Program (MFP)
  - Up to **\$50 million** to be used as grants and guarantees from the Asian Development Fund Private Sector Window (ADF-PSW)
  - Up to **\$20 million** loans, guarantees and grants from ADB-administered concessional trust funds
- Up to **\$15 million** in **technical assistance** from Technical Assistance Special Fund (TASF)



# PROGRAM ELIGIBILITY

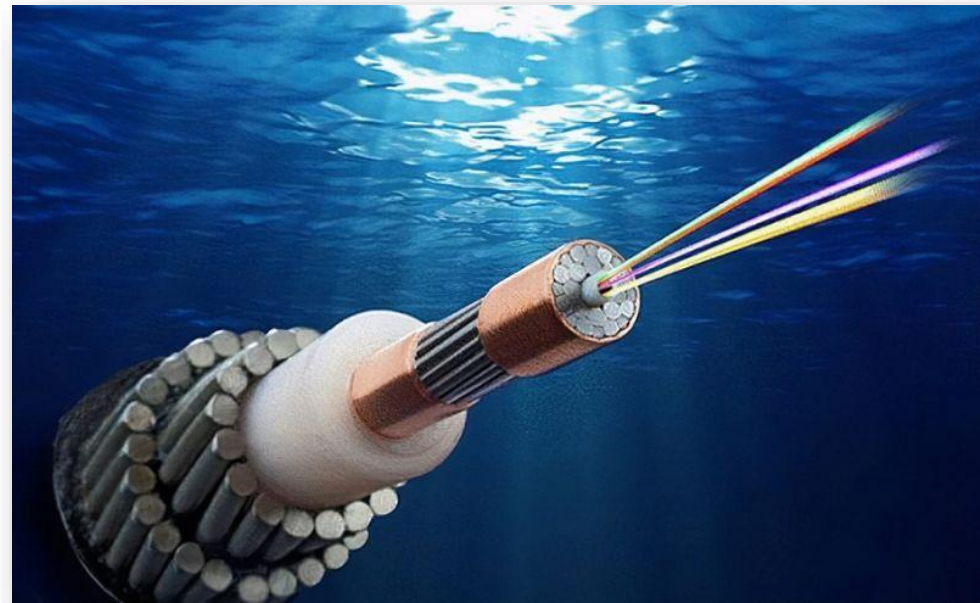
Criteria	Eligibility
<b>COUNTRIES</b>	ADB's Pacific Developing Member Countries: <ul style="list-style-type: none"> <li>• Cook Islands</li> <li>• Federated States of Micronesia</li> <li>• Fiji</li> <li>• Kiribati</li> <li>• Marshall Islands</li> <li>• Nauru</li> <li>• Niue</li> <li>• Palau</li> <li>• Papua New Guinea</li> <li>• Samoa</li> <li>• Solomon Islands</li> <li>• Tonga</li> <li>• Tuvalu</li> <li>• Vanuatu</li> </ul>
<b>SECTORS</b>	All sectors
<b>PRODUCTS / INSTRUMENTS</b>	Loans, Guarantees, Grants <i>Direct and indirect equity investments (e.g., private equity funds) are not eligible under the program.</i>
<b>INDIVIDUAL TRANSACTION LIMITS</b>	Up to \$10 million of OCR (up to \$5 million for MFP) Up to \$10 million of PSW Up to \$10 million of ADB-managed concessional trust funds
<b>CURRENCY</b>	United States dollar or local currency
<b>TENOR</b>	Renewable energy or infrastructure: up to 18 years Other sectors: up to 10 years
<b>SAFEGUARDS (E&amp;S)</b>	Category A projects are not permitted

# WAYFINDER'S RISK-RETURN POSITIONING



# Project Highlights

# Tamtam Submarine Cable Project (Vanuatu) *(1st Wayfinder deal)*



## KEY FINANCING

CLIENT	Prima Limited
SECTOR	Telecommunications
COUNTRY	Vanuatu
ADB FINANCING	\$4.5 million ADB OCR; \$1.9 million ADF 14 PSW
SIGNING DATE	February 2026

## Project Features

- The project involves the design, construction, marine deployment, commissioning, and operation of a 411-kilometer submarine fiber optic telecommunications cable connecting Port Vila, Vanuatu to Lifou, New Caledonia.
- Vanuatu is located in a region characterized by frequent volcanic and seismic activity, as well as recurring tropical cyclones. The cable will enhance ICT services resiliency nationwide through establishing adequate redundancy.
- The SMART (Science Monitoring and Reliable Telecommunications) technology used by the cable will provide environmental monitoring and early warning data for natural hazards. It will also capture data on ocean temperatures, sea levels, and other climate-relevant measurements.

## ADB's Value Addition

- First project under the ADB Wayfinder (Pacific) Program.
- Improved bankability by providing a long-term USD loan, helping to match capex and revenue while mitigating FX risk.
- Technical assistance program supporting young women through study visits, hands-on experiences, and training in STEM and ICT fields.

# Air Niugini Aircraft Fleet Renewal and Safety Project (PNG)



## KEY FINANCING

CLIENT	Air Niugini Limited
SECTOR	Transport
COUNTRY	PNG
ADB FINANCING	\$19 million ADB OCR; \$16.8 million LEAP 2
SIGNING DATE	December 2025

## Project Features

- Pre-delivery financing (PDP) for 6 Airbus A220-100 aircraft.
- New aircraft will replace Air Niugini’s antiquated domestic fleet, improving reliability and connectivity across PNG, where air travel is essential due to challenging terrain.
- The fleet upgrade will also deliver around 20% better fuel efficiency, lowering operating costs and environmental impact.

## ADB’s Value Addition

- ADB provided USD financing, which is deemed challenging in the country, helping bridge a gap that commercial banks cannot fill.
- The Lenders (together with Export Finance Australia) took a higher risk than commercial banks, enabling a critical developmental project.
- Strong OneADB collaboration, aligning with PNG’s aviation reforms and complementing ongoing ADB programs (Civil Aviation Development Investment Program, SOE reform, and policy support).

# Sun Pacific Solar Expansion Project (Samoa)



### KEY FINANCING

CLIENT	Sun Pacific Energy Limited (SPEL)
SECTOR	Energy
COUNTRY	Samoa
FINANCING	\$2.8 million (~AU\$ 4.3 million) ADB OCR
SIGNING DATE	August 2025

### Project Features

- To upgrade and expand SPEL’s existing Upolu Solar Farm, which was partly funded by ADB in 2017, by installing higher-efficiency solar panels.
- The new expansion is expected to generate 9.6 gigawatt-hours of clean energy per year and reduce an additional 1,944 tons of carbon dioxide emissions annually.

### ADB’s Value Addition

- The project benefited from small-scale technical assistance of \$225,000 from the Australian Climate Finance Partnership Fund, administered by ADB, to cover a portion of due diligence costs.

# MFL Increasing Access to Finance for SME and WSMEs (Fiji)



## Key Financing

CLIENT	Merchant Finance Pte Limited (MFL)
SECTOR	Finance
COUNTRY	Fiji
FINANCING	\$4 million (~FJ\$9.1 million) ADB OCR
SIGNING DATE	December 2024

## Project Features

- First ADB private sector transaction in the finance sector in Fiji, using local currency.
- First use of funds from the Women Entrepreneurs Finance Initiative (We-Fi) in the Pacific.

## ADB's Value Addition

- Innovative financing structure and instrument, using We-Fi grant to increase the outreach to WMSEs.
- Local currency financing to support MFL's funding sources diversification while reducing foreign currency risk exposure.
- Technical Assistance supports MFL in improving underwriting standards, building staff capacity on environmental, social, and governance matters, and providing financial literacy training for sub-borrowers.

# ECOM Climate-Resilient Coffee Value Chain Project (Regional)



## Key Financing

Client	ECOM Agro-industrial Corporation Limited & ECOM Agro-industrial Asia Private Limited
Sector	Agribusiness
Country	Regional: Papua New Guinea, Indonesia, Viet Nam, India
Financing	\$100 million ADB OCR; \$75 million parallel loan from JICA
Signing Date	December 2024

## Project Features

- Financing of ECOM’s working capital requirements, including inventories, receivables, and advances to smallholder farmers for coffee procurement.
- The project aims to enhance the climate resilience of the region's coffee value chain and benefit more than 62,000 smallholder farmers.

## ADB’s Value Addition

- Structured as a certified social loan, verified by a second-party opinion, which helps ECOM to attract new sustainability-focused investors.
- ADB mobilized an additional \$75 million investment as a parallel loan investment from JICA.
- Technical assistance of \$1.25 million to expand the scope of extension services provided by ECOM to farmers in Papua New Guinea and Viet Nam, particularly in family-based planning and climate-resilient diverse coffee agroforestry practices.

# ADB FRONTIER and ADB VENTURES

## ADB Frontier (est. 2024)

- **What:** ADB Frontier invests in early-stage and innovative businesses models that build and transform local industries in the Pacific Islands.
- **Where:** Initial focus in Fiji, Samoa and Tonga
- **Focus:** All sectors. See opportunities in agriculture, light manufacturing, tourism and other services.
- **How much:** Initial \$5 million capital to invest in about 15-20 companies during 2025-2028. Funded 5 companies to date. Will expand based on performance.
- **Product:** Up to \$400,000. Innovative and flexible financing including non-collateralized local currency financing that is paid back based on future revenue performance of company. Terms based on risk profile of companies.

## ADB Ventures (est. 2020)

- **What:** ADB Ventures invests in early-stage technology companies generating high development and climate impact in the DMCs.
- **Where:** All ADB DMCs.
- **Focus:** Climate technology sectors (e.g., clean energy, smart mobility, climate-smart agriculture) for ADB Ventures Fund 1 and 2 and all sectors for SEED.
- **How much:** Over \$100 million AUM across 2 Funds (c. \$60m each) and SEED (\$8m). Funded over 60 companies since 2020.
- **Product:** \$100,000 - 4,000,000 equity or quasi-equity financing, alongside other early-stage local or regional investors.

# SELECTED TRANSACTIONS

## ADB FRONTIER

## ADB VENTURES



Fiji



Multiple Pacific Islands



Samoa



Nauru, Micronesia, Marshall Islands, (Technology Transfer)

SeaPac is Fiji's first local coastal aquaculture farm producing prawns for the Fijian market creating demand for locally grown, high quality prawns developing a local industry and reducing reliance on imports.

ADB Frontier is helping SeaPAC secure new farmland and funding for equipment to expand its production.

Kahuto Pacific is an aerial mapping company improving access to affordable, high-quality geospatial data by localizing mapping services and launching an on-demand data platform to support development planning and the monitoring of coastal erosion, water levels, and land use. ADB Frontier is supporting Kahuto to refine its strategy and develop, finance, and launch the new geospatial data platform.

Women-led bakery brand and Samoa's first professionally scaled operator, employing 73% women and targeting HACCP certification as it expands. ADB Frontier is financing the new production facility.

Skycatch delivers sub-2cm accurate drone surveying and 3D site models, enabling precise tracking, better planning, and reduced delays, waste, and errors. ADB Ventures' investment accelerates adoption of drone-enabled tech to cut emissions, improve safety, and boost efficiency across infrastructure projects, including in the Pacific.

# Thank you!

For more information:



Contact us:

**Pin Satitpatanapan**  
[psatitpatanapan@adb.org](mailto:psatitpatanapan@adb.org)

Investment Specialist  
Infrastructure Finance  
Private Sector Operations Department

**Amandeep Singh Virk**  
[avirk.consultant@adb.org](mailto:avirk.consultant@adb.org)

Regional Coordinator-PPP,  
Office of Market Development and Public-  
Private Partnerships (OMDP)