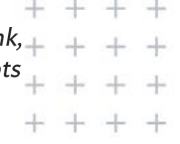


The views expressed in this presentation are the views of the author/s and do not necessarily reflect the views or policies of the Asian Development Bank, or its Board of Governors, or the governments they represent. ADB does not guarantee the accuracy of the data included in this presentation and accepts no responsibility for any consequence of their use. The countries listed in this presentation do not imply any view on ADB's part as to sovereignty or independent status or necessarily conform to ADB's terminology.

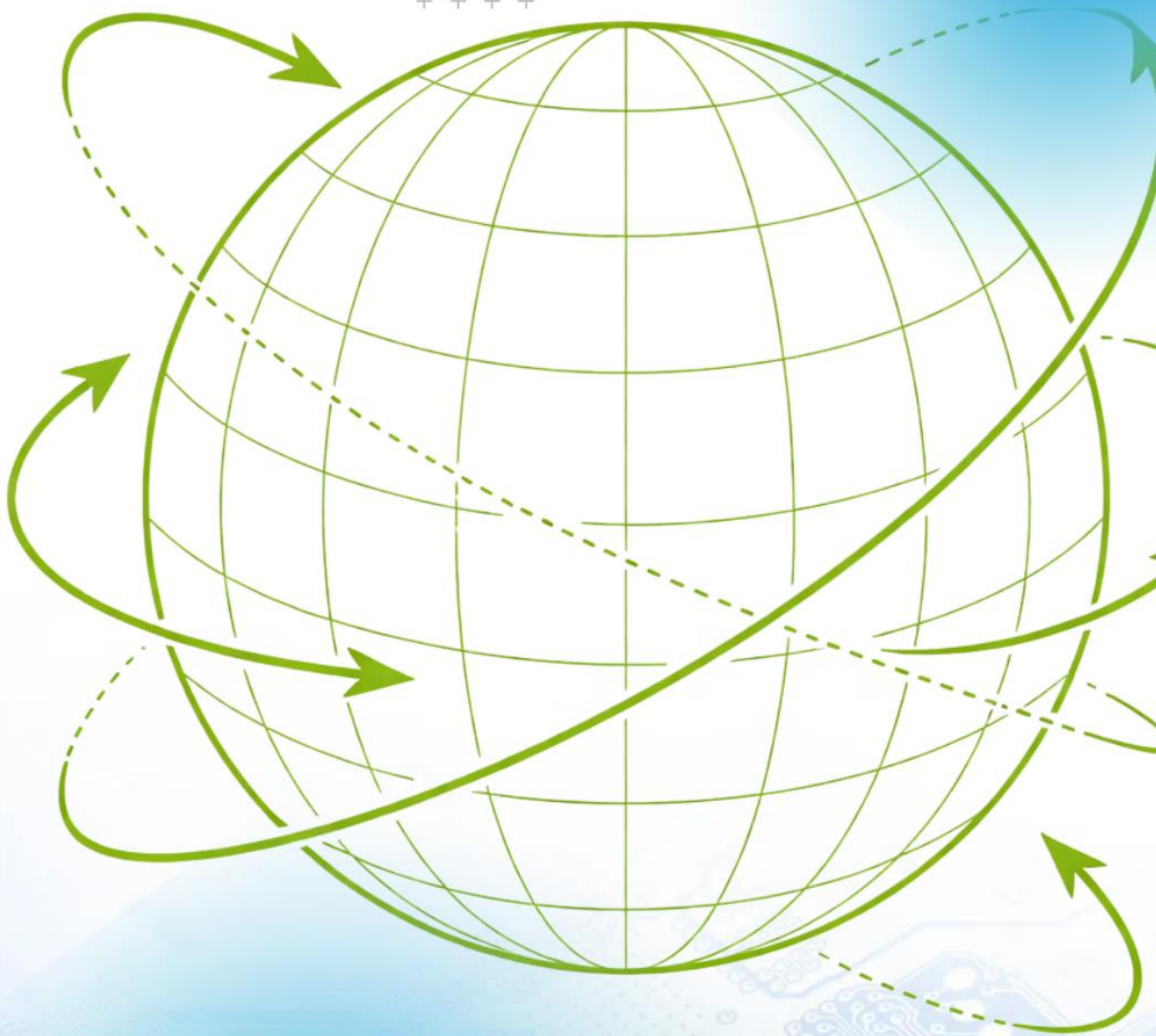


# TRADE FORUM

## 2026

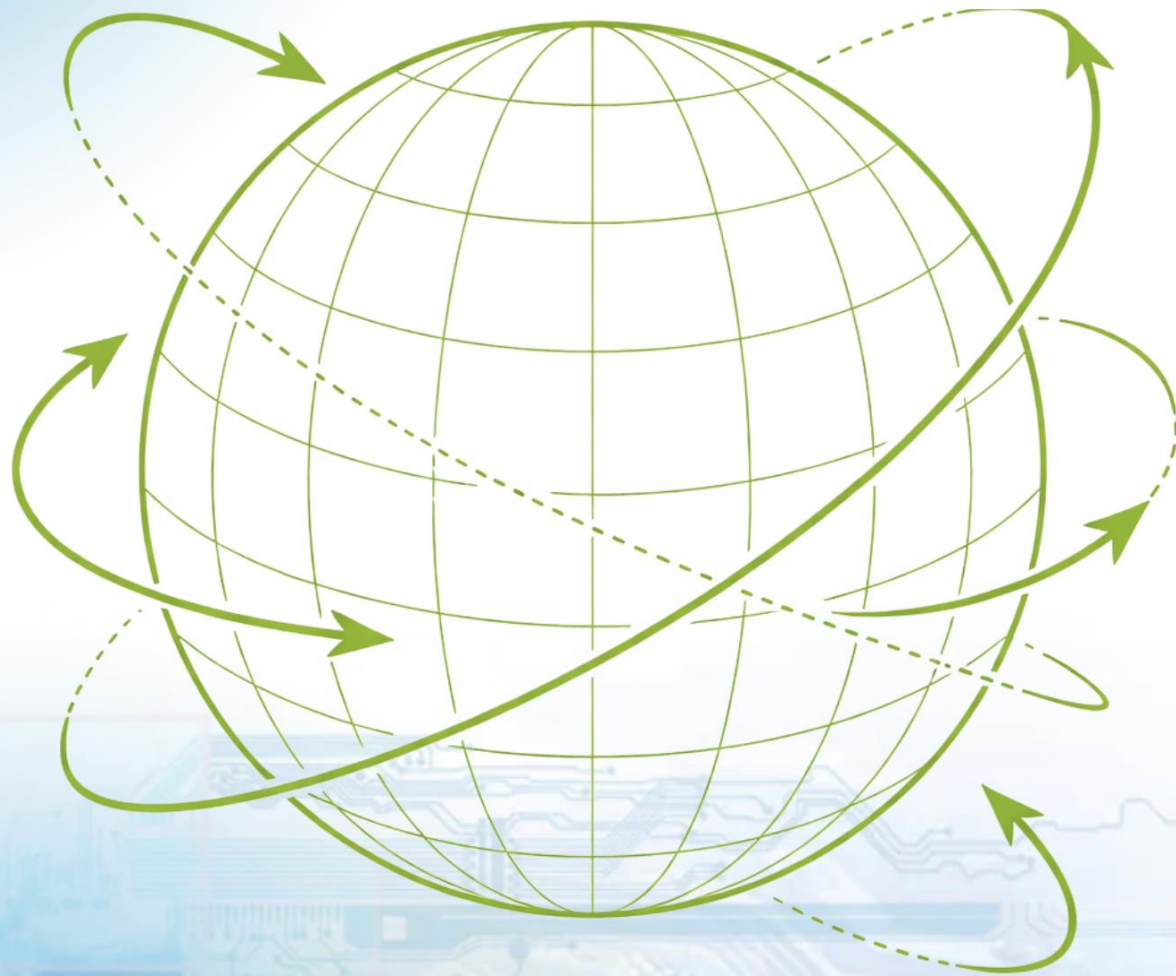
Trade Policy in a Fragmented World:  
Accessions, Industrial Policy,  
and the New Multilateralism

12-14 May 2026  
Bangkok, Thailand



The views expressed in this presentation are the views of the author/s and do not necessarily reflect the views or policies of the Asian Development Bank, or its Board of Governors, or the governments they represent. ADB does not guarantee the accuracy of the data included in this presentation and accepts no responsibility for any consequence of their use. The countries listed in this presentation do not imply any view on ADB's part as to sovereignty or independent status or necessarily conform to ADB's terminology.

+ + + +  
+ + + +  
+ + + +



## Session 6

# Non-tariff measures and environmental goods: measurement, policy, and the Trade and Climate Portal

Julian Clarke (ADB) and Gianluca Santoni (PSE)



# NTMs are central for green trade



NTMs can protect legitimate public objectives - safety, health, environmental standards - while still generating compliance costs and asymmetries.



*Measurement matters because regulatory reform is a prioritization problem.*



# What we quantify



We focus on regulatory NTMs that are especially relevant for climate, industrial, and standards policy.



Structural gravity · two-step identification · endogeneity correction

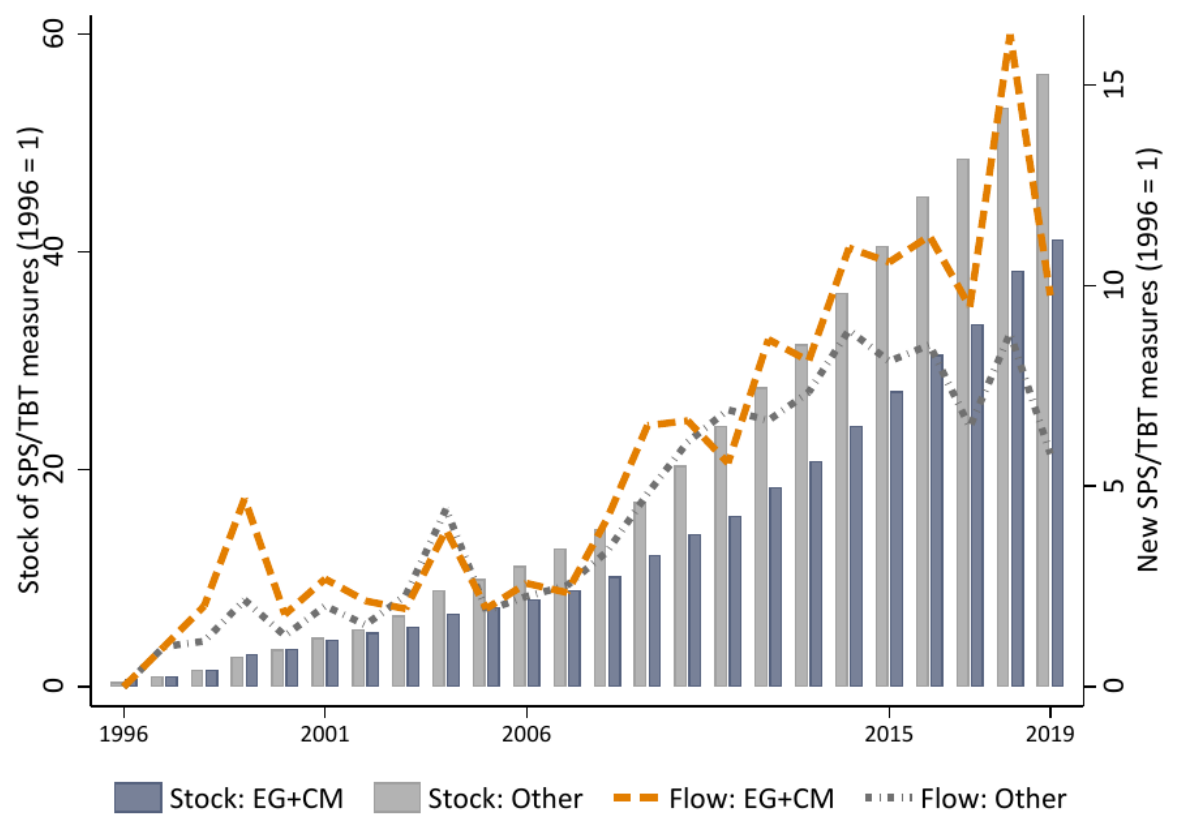
**HS6 product-level estimates:  
trade response to NTMs and ad valorem equivalents**

# What we quantify



Regulatory intensity has expanded sharply, especially around green value chains

Figure 1: Evolution of SPS and TBT measures by product group (1996 = 1)



Growth of regulatory measures is broad-based, not a narrow-sector issue.

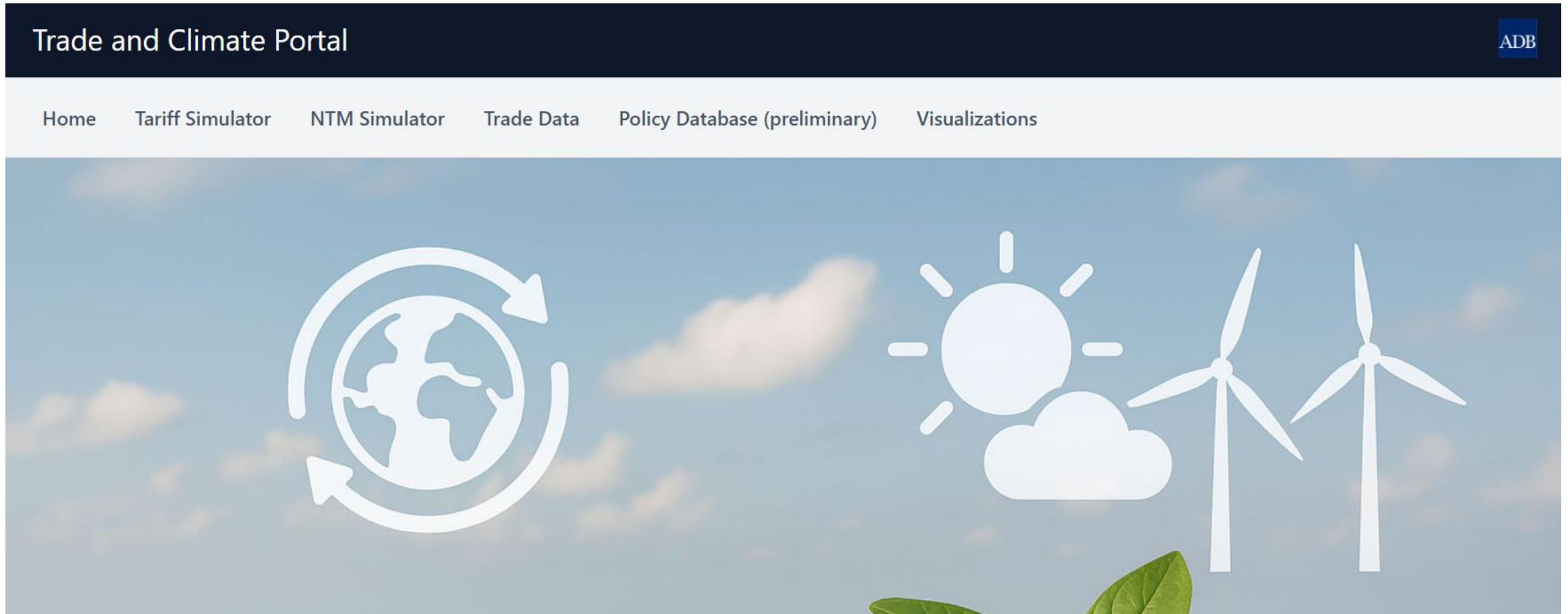
Environmental goods and critical minerals are exposed to rising regulatory intensity.

Descriptive evidence motivates product-level measurement; it does not by itself identify trade costs.

***Policy question is no longer whether NTMs matter, but where they bind most.***



# The Trade and Climate Portal as a policy tool



The Portal helps translate technical trade data into a more accessible tool for prioritization, reform, and policy dialogue.



# The NTM simulator module



## NTM Simulator

Importer: 3 selected   Exporter: Thailand   Year: 2024   Product: (401150) New pneumatic tyres, of rubber; of a kind us...   Simulate: 0 - Remove NTM   [Apply](#)

CURRENT SELECTIONS [Reset filters](#)  
 Importers: China X France X Thailand X   Exporters: Thailand X   Years: 2024 X   Products: 401150 X   Simulate: 0 - Remove NTM X

[Download NTM Data](#)

Showing 1-2 of 2 results

Exporter	Importer	Category	HS Code	HS Description	Year	Current Trade (th US\$)	Current NTM (ad valorem, %)	Simulated NTM (ad valorem, %)	Trade Value (short term)	Trade Value (medium term)	Trade Value (med-long term)
									Simulation Results		
Thailand	China	Clean Transportation	401150	New pneumatic tyres, of rubber; of a kind used on bicycles	2024	3,125.339	7	0	3,447.328	3,802.489	4,626.353
Thailand	France	Clean Transportation	401150	New pneumatic tyres, of rubber; of a kind used on bicycles	2024	9,463.037	0	0	9,463.037	9,463.037	9,463.037

*Simulates how NTM changes may affect trade for selected countries, products, and years.*

*Helps identify where regulatory frictions may be most relevant for market access.*

*Supports benchmarking, reform dialogue, and scenario-based policy analysis.*

**The NTM simulator turns measurement into a practical tool for country- and product-level policy analysis.**



# The tariff simulator module



Trade and Climate Portal ADB

Home Tariff Simulator NTM Simulator Trade Data Policy Database Visualizations

## Tariff Simulator

Importer: 2 selected | Exporter: Thailand | Year: Select Year | Product: (401150) New pneumatic tyres, of rubber; of a kind us... | New Tariff (%): 0 Apply

CURRENT SELECTIONS [Reset filters](#)

Importers: China X France X Exporters: Thailand X Years: Products: 401150 X New Tariff:

[Download Tariff Data](#)

Showing 1-2 of 2 results

Exporter	Importer	Category	HS Code	HS Description	Year	Current Trade (th US\$)	Current Tariff (%)	Trade Value (short term)	Trade Value (medium term)	Trade Value (med-long term)
Simulation Results										
Thailand	China	Clean Transportation	401150	New pneumatic tyres, of rubber; of a kind used on bicycles	2024	3,125.339	0	3,125.339	3,125.339	3,125.339
Thailand	France	Clean Transportation	401150	New pneumatic tyres, of rubber; of a kind used on bicycles	2024	9,463.037	4	9,985.465	10,536.734	11,732.254

The tariff simulator shows how tariff changes may affect trade flows for selected countries, products, and years.

It provides a simple way to compare baseline trade conditions with alternative tariff scenarios over the short, medium, and longer term.



# The visualization module



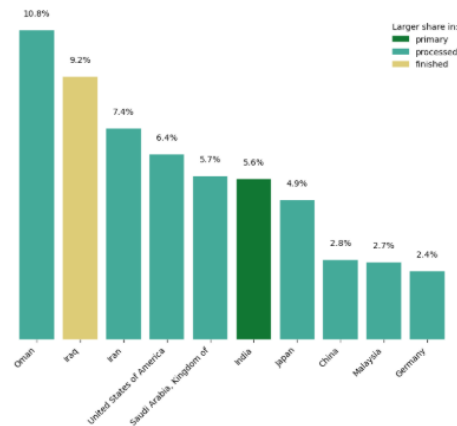
## Trade and Climate Portal



Home    Tariff Simulator    NTM Simulator    Trade Data    Policy Database (preliminary)    Visualizations

### Visualizations

#### Bar Charts



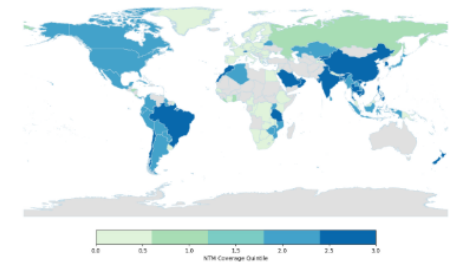
#### Tree Maps



#### Network Graphs



#### NTM Maps



Visualizations help users quickly identify patterns in trade, NTMs, and product structure, making the Portal useful for benchmarking, prioritization, and policy discussion.



# Takeaways



- NTMs are a significant source of trade costs, including in green and strategic sectors. The main policy challenge is to identify where they have the greatest impact.
- Product-level AVEs and the Trade and Climate Portal help translate technical measurement into a practical tool for benchmarking, prioritization, and reform discussions.
- AVEs can be used in general-equilibrium tools such as the SNOW model, including in PSE–ADB applications, for ex-ante assessment of trade-policy reforms and regulatory convergence.

*Ongoing extensions: develop a country-product-year restrictiveness index and enrich the NTM database by collecting and processing underlying regulations with LLM methods.*



++++  
++++  
++++



**THANK  
YOU!**

