

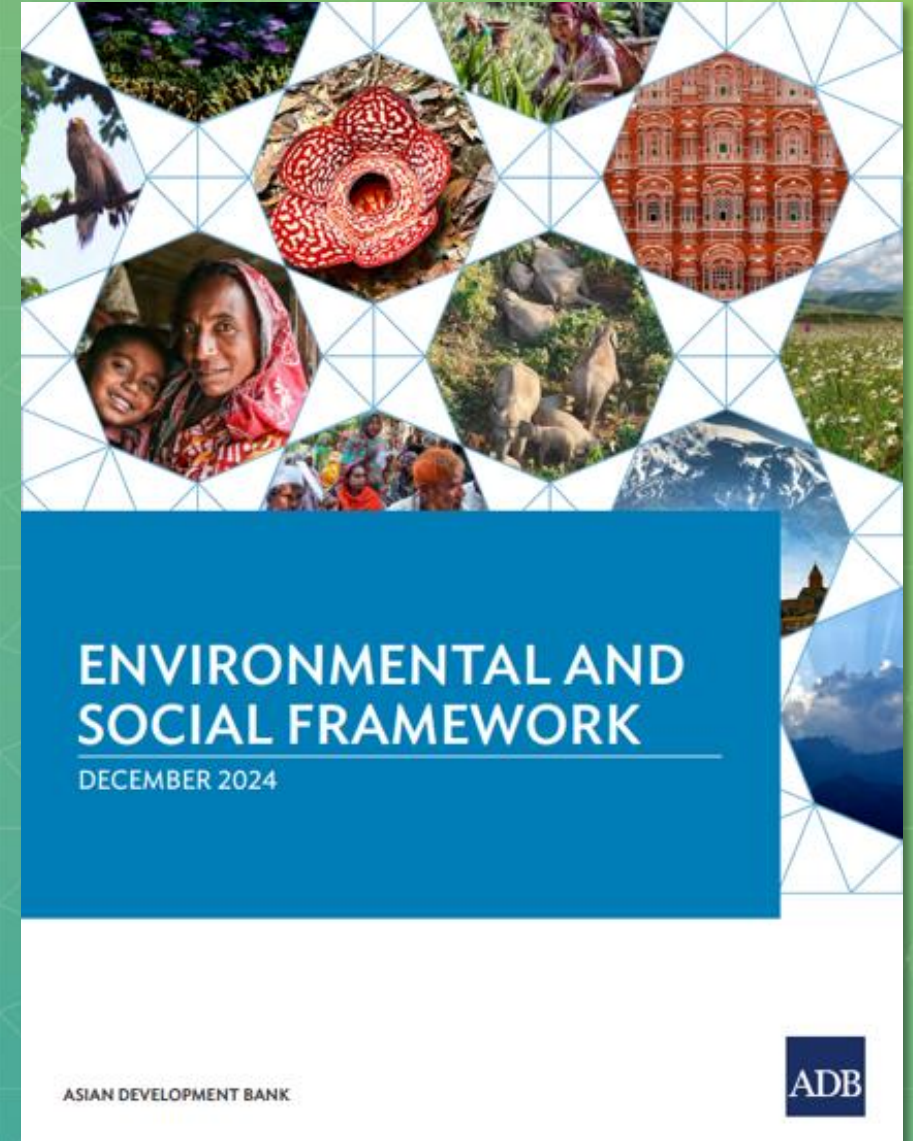
ADB's Environmental and Social Safeguards

Presented by:

Bruce Dunn, Head OSFG

and

**Felix Nii Tettey Oku,
Principal Safeguards Specialist, OSFG**



The views expressed in this presentation are the views of the author/s and do not necessarily reflect the views or policies of the Asian Development Bank, or its Board of Governors, or the governments they represent. ADB does not guarantee the accuracy of the data included in this presentation and accepts no responsibility for any consequence of their use. The countries listed in this presentation do not imply any view on ADB's part as to sovereignty or independent status or necessarily conform to ADB's terminology.



Bruce Dunn
Head OSFG



Felix Nii Tettey Oku

Principal Safeguards Specialist
OSFG

Environmental and Social Standards

10 standards build off the requirements of the Safeguard Policy Statement

1 

Assessment and Management
of Environmental and Social
Risks and Impacts

2 

Labor and Working
Conditions

3 

Resource Conservation
and Pollution Prevention

4 

Health, Safety,
and Security

5 

Land Acquisition and
Land Use Restriction

6 

Biodiversity Conservation
and Sustainable Natural
Resources Management

7 

Indigenous Peoples

8 

Cultural Heritage

9 

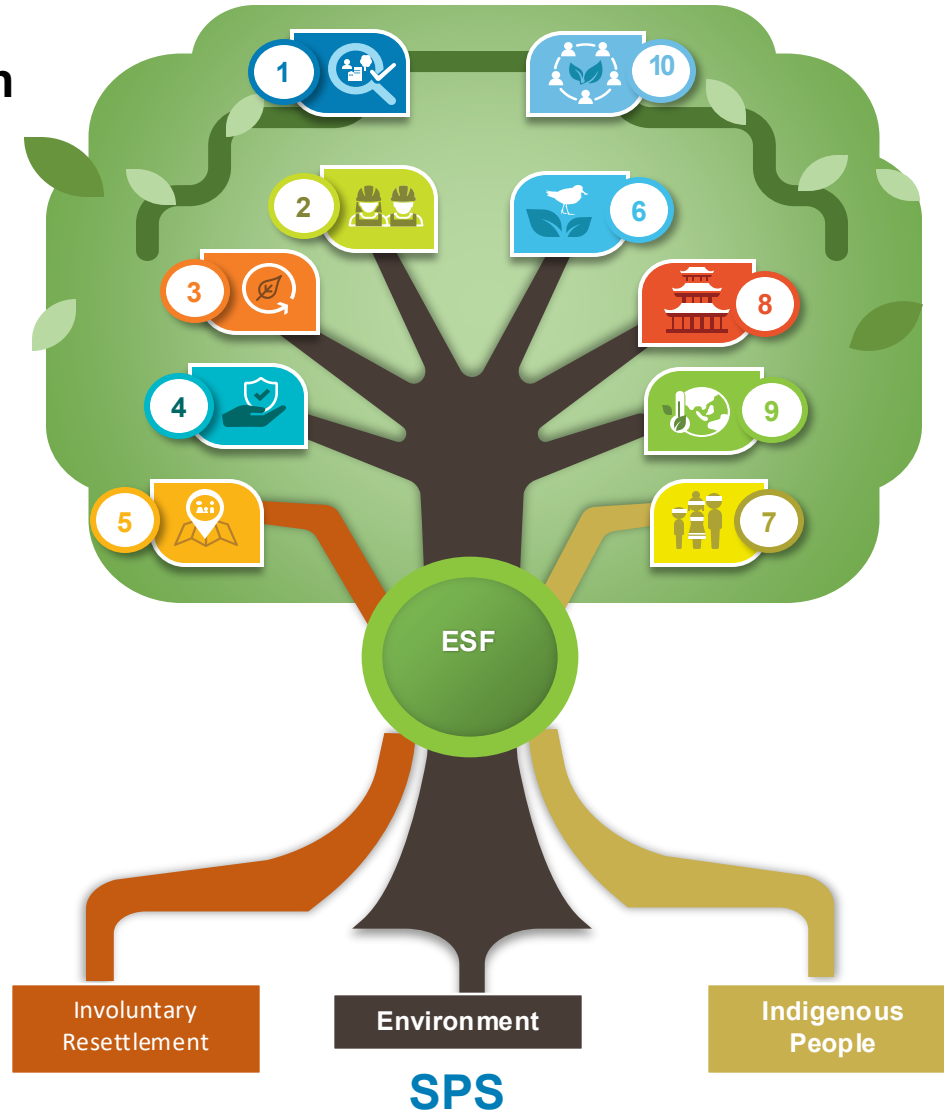
Climate Change

10 

Stakeholder Engagement
and Information Disclosure

Key ESF Changes Compared with the SPS

- **Risk-based approach** allowing adaptive management
- **Integration** between environmental and social standards
- New E&S risk classification: High, Substantial, Moderate, and Low



Opportunity to use borrowers' E&S systems at the project level

Closely aligned with other multilateral development banks
Easier co-financing arrangements
- Common approaches and Full Mutual Reliance Framework (with World Bank)

Part 2



Emphasis on **Quality, Capability** and **long-term value – Not Price Alone.**

2.1.4 Technical Scoring

Technical Factors	Weightings (1)	Scores (2)	Weighted Score (1) x (2)
1. Approach and Methodology	70%	(max = 100)	T1
2. Key Personnel Qualifications	30%	(max = 100)	T2
TOTAL	100%		T

2.1.4 Technical Scoring

Technical Factors ¹	Weightings (1)	Scores (2)	Weighted Score (1) x (2)
1. Approach and Methodology	50-90...%	(max = 100)	T1
2. Key Personnel Qualifications	0-20...%	(max = 100)	T2
3. E&S Requirements	0-20...%	(max = 100)	T3
4. Sustainability Requirements	0-25...%	(max = 100)	T4
TOTAL	100%		T

2. Key Personnel Qualifications ^a	...%	(max = 100)	T2
	Sub-Factor Weightings (1)	Score (2)	Weighted Score (1) x (2)
(i) Personnel and Organizational chart are clear and relevant to perform the works	...%	(max = 10)	
(ii) Project Manager <ul style="list-style-type: none"> General qualifications. The staff must be a licensed professional in the assigned position. Total work experience. Demonstrate <i>minimum</i> _ [insert number of years] years in a similar position. Experience in similar work. Demonstrate <i>minimum</i> _ [insert number of years] years in similar work or comparable projects. 	...%	(max = 10)	
(iii) Site engineer	...%	(max = 10)	
(iv) Material engineer	...%	(max = 10)	
(v) Contract specialist	...%	(max = 10)	
(vi) Environmental specialist	...%	(max = 10)	
(vii) Social specialist	...%	(max = 10)	
(viii) H&S officer	...%	(max = 10)	
(ix) Labor/HR specialist	...%	(max = 10)	
(x) SEAH focal point	...%	(max = 10)	
(xi) [others]	...%	(max = 10)	
Subtotal Score T2			

3. E&S Requirements	...%	(max = 10)	T3
	Sub-Factor Weightings (1)	Score (2)	Weighted Score (1) x (2)
(i) E&S Approach & Methodology	...%	(max = 10)	
(ii) In-house Policies & Procedures	...%	(max = 10)	
Subtotal Score T3	100%		

4. Sustainability Requirements ^a	...%	(max = 10)	T4
	Sub-Factor Weightings (1)	Score (2)	Weighted Score (1) x (2)
(i) Local Jobs Creation and Local skills development ^b	...%	(max = 10)	
(ii) other sustainability requirements	...%	(max = 10)	
Subtotal Score T4	100%		

^a Maximum 25%
^b Maximum 15%

How U.S. firm capabilities align with ADB Merit Point Criteria

ADB MPC Technical Criterion	What is Scored	Typical Strengths Demonstrated by U.S. Firms
Technical Quality & Innovation	Soundness of design, innovation, performance-based solutions	Advanced engineering, digital tools, R&D-driven solutions
Experience & Capacity	Relevant project experience and delivery systems	Extensive international track records and strong project governance
Sustainability & Safeguards	Climate resilience, ESG, lifecycle value	Mature ESMS, lifecycle costing, climate-adaptive designs
Quality & Risk Management	QA/QC, safety, and implementation risk controls	Robust QA/QC frameworks and compliance-led delivery cultures

Typical Areas of Comparative Strengths for US Firms and Consultants



Technical Quality & Innovation

Proven track record in complex, high-risk projects; strong R&D, digital solutions, and performance-based designs aligned with MPC's quality and innovation weighting.

Experience & Institutional Capacity

Extensive international project delivery, robust project management systems, and depth of specialist expertise—key technical scoring factors under MPC

Typical Areas of Comparative Strengths for US Firms and Consultants



Safeguards, ESG & Sustainability Integration

Advanced environmental and social management systems (ESMS), climate resilience, and lifecycle value approaches that align with ADB's sustainability and safeguards criteria.

Quality Assurance & Risk Management

Strong QA/QC frameworks, compliance culture, and risk controls that reduce implementation risk—an explicit objective of MPC



Thank you!

For more information:

<https://www.adb.org/who-we-are/environmental-social-requirements>

<https://asiandevbank.sharepoint.com/teams/osfg>

Ask ESF askesf@adb.org