



This is not an ADB material. The views expressed in this document are the views of the author/s and/or their organizations and do not necessarily reflect the views or policies of the Asian Development Bank, or its Board of Governors, or the governments they represent. ADB does not guarantee the accuracy and/or completeness of the material's contents, and accepts no responsibility for any direct or indirect consequence of their use or reliance, whether wholly or partially. Please feel free to contact the authors directly should you have queries.

# Climate Change and Super Pollutants

**Sirapong Sooktawee, PhD**

Department of Climate Change and Environment (DCCE),  
MoNRE, Thailand



# DEPARTMENT OF CLIMATE CHANGE AND ENVIRONMENT (DCCE)

## Structure



- ➔ Strategy and International Cooperation Division
- ➔ Climate Change Adaptation Division
- ➔ Climate Change Mitigation Division
- ➔ Climate Change and Environmental Research Center
- ➔ Climate Change and Environmental Participation Promotion Division
- ➔ Office of the Secretary



Dr. Phirun Saiyakitpanich

Director General Department of Climate Change and Environment



Mr. Pavich Kesavawong  
Deputy Director General

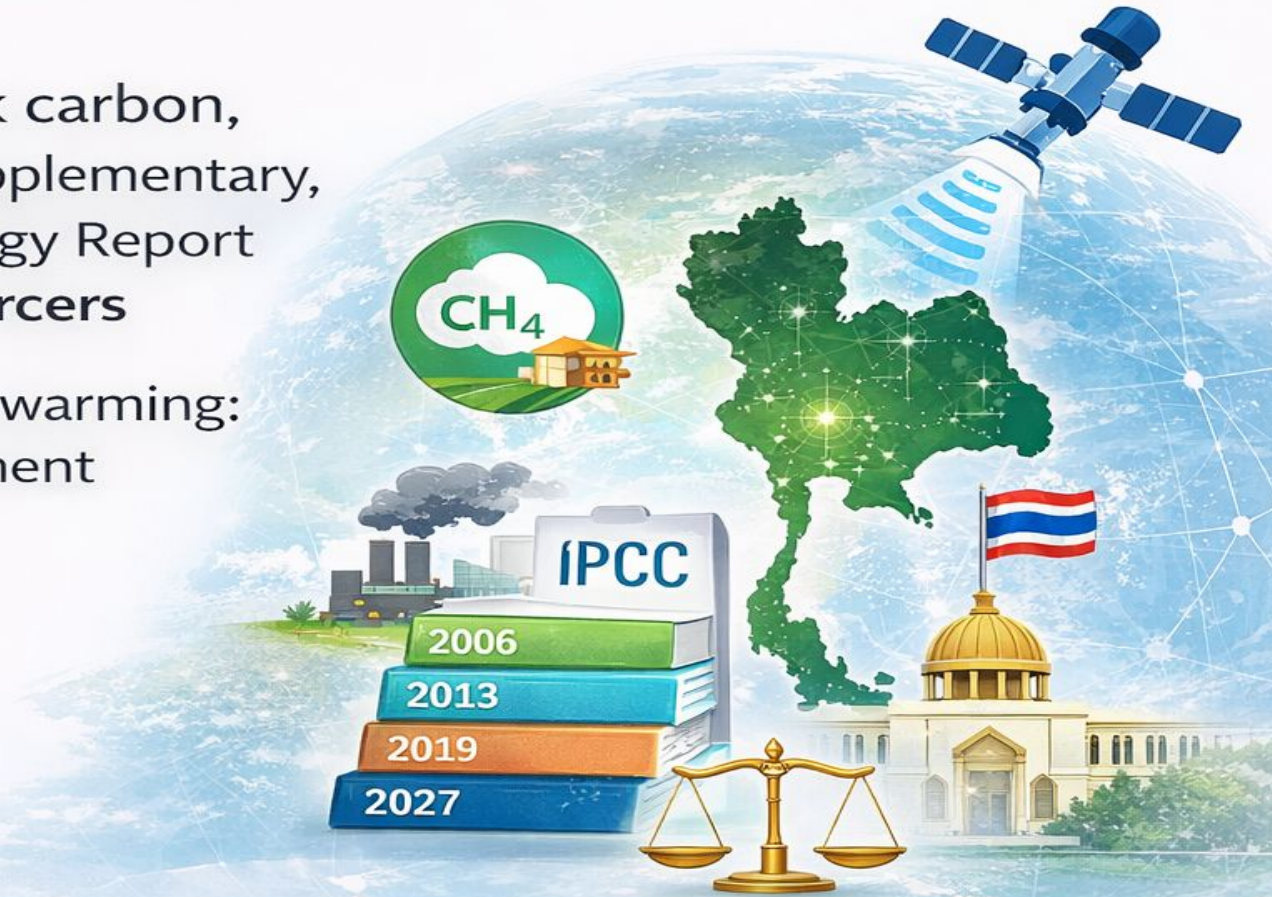


Mr. Komet Putthasorn  
Deputy Director General

# Climate Change and Super Pollutants



- ✓ **Super pollutants:** methane and black carbon, the 2006 IPCC Guidelines, the 2013 Supplementary, 2019 Refinement, 2027 IPCC Methodology Report on Inventories for Short-lived **Climate Forcers**
- ✓ **Affect air quality** and near-term climate warming: Either Co-benefits or Opposite management pathways
- ✓ **Thailand Climate Change Act**
- ✓ Policy coordination, emission and national GHG inventory



**Enhancing Transparency &  
Evidence-Based Policy  
Implementation**

# Policy Intervention: Strengthening National Emission Inventory



Development of national greenhouse gas reporting and inventory system



Integration of methane emissions from waste and agriculture



Inter-connection of combustion-related pollutants (PRTR) system to the inventory system



Development of MRV system under the Climate Change Act



# Progress and Examples



- **Strengthened** national emission inventory capacity



- **Integration** of multiple emission datasets:
  - **Data harmonization** is required to give the same meaning.



- **Improved ability to track methane emissions:**
  - Explore the possibility of using **satellite** data to monitor methane under the MoU with **GISTDA**



- **Development of data analysis systems supporting climate policy:**
  - **DCCE Climate Change Information Center**



# Implementation Challenges and Opportunity



✓ **Implementation** of the Thailand Climate Change Act and others (Clean Air Act and PRTR Act)

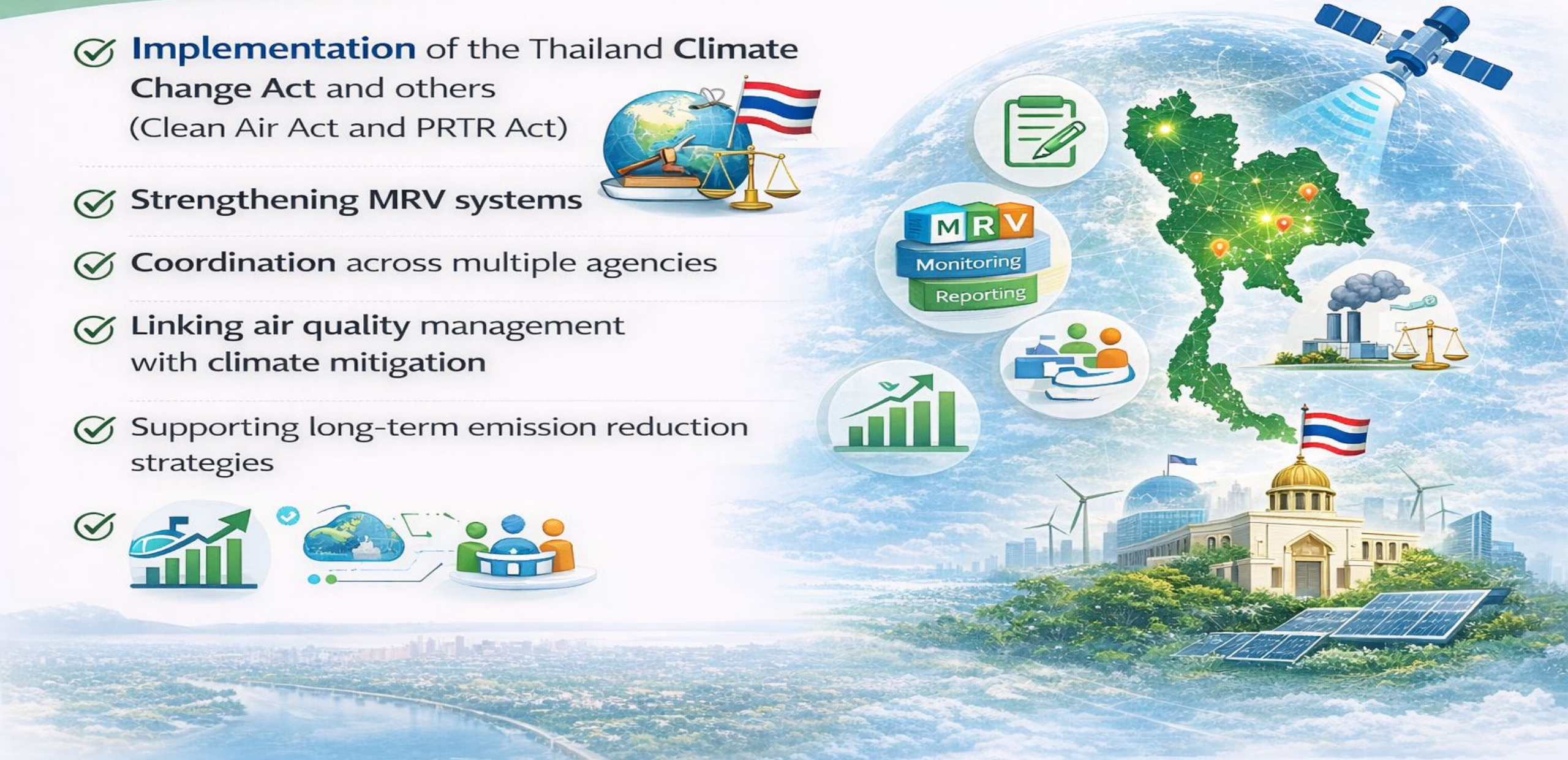


✓ **Strengthening MRV systems**

✓ **Coordination across multiple agencies**

✓ **Linking air quality management with climate mitigation**

✓ **Supporting long-term emission reduction strategies**





# Thank You for Your Attention

We look forward to continued  
collaboration on super pollutant mitigation.

