

This is not an ADB material. The views expressed in this document are the views of the author/s and/or their organizations and do not necessarily reflect the views or policies of the Asian Development Bank, or its Board of Governors, or the governments they represent. ADB does not guarantee the accuracy and/or completeness of the material's contents, and accepts no responsibility for any direct or indirect consequence of their use or reliance, whether wholly or partially. Please feel free to contact the authors directly should you have queries.

# Resilient Border Areas: Climate and Health Lessons from Laos and Cambodia

## Discussion on Regional Migrant- Health Priority Issues and Scope for Regional Collaboration

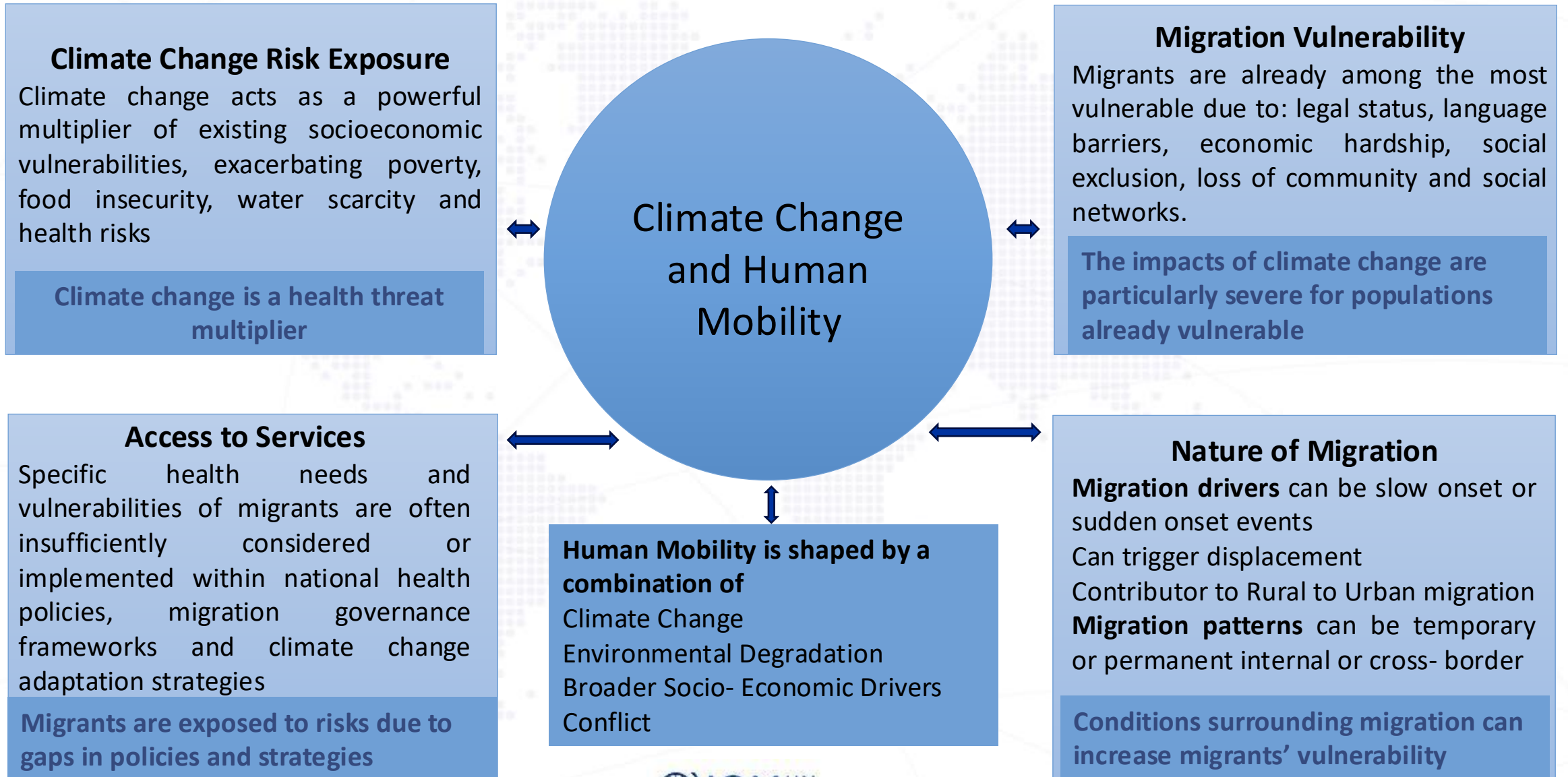
Dr. Patrick Almeida

Regional Thematic Specialist (Migration Health)

*Migration Health Unit, Regional Office for Asia and the Pacific*



# Interplay of Climate Change- Health- Migration



# Nature of Migration

## Vulnerability to Climate Change

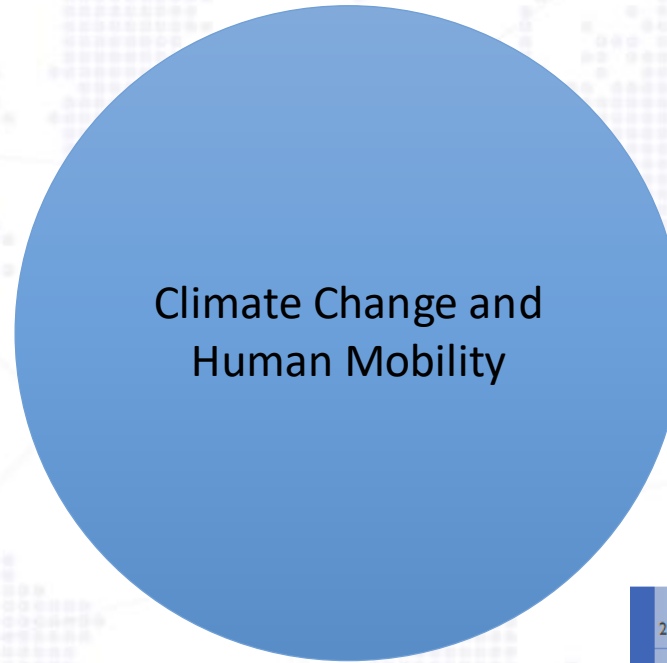
Climate change in the GMS comprises changes in precipitation and increased variability, frequency and intensity of extreme events.

Lao- Central and Southern Provinces-  
Seasonal Flooding and Tropical Storms

Northern- Flash Flood

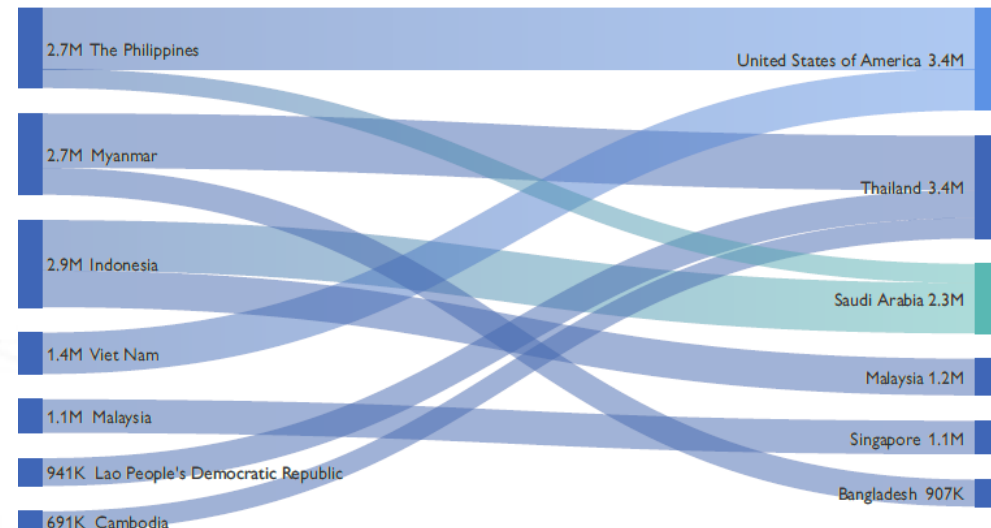
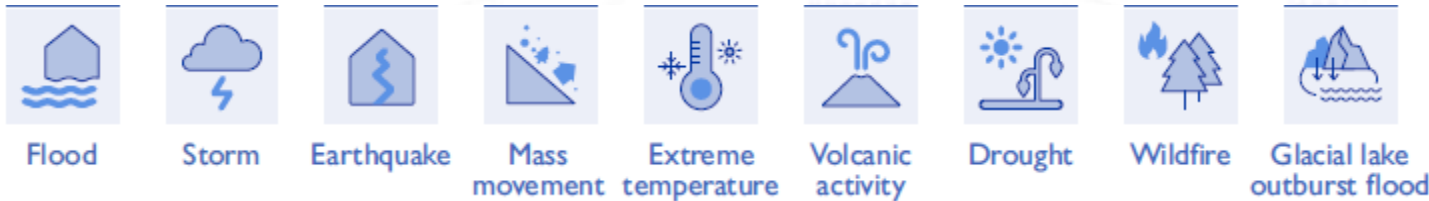
Cambodia- Flooding in Mekong and Tonle Sap floodplains where 80% of the population resides most affected

Slow onset- Drought (Meteorological and Hydrological) affects agriculture that depends on rain, effects of construction of dams along Mekong River and its tributaries



## Migration Patterns and Characteristics

Movements due to Climate Change  
Internal Migration (49%, Cambodia)  
Seasonal Migration (agricultural cycles and environmental conditions)  
Cross- Border  
Movements across borders  
Temporary vs Permanent  
Documented vs Undocumented Migrants (Cambodia, 38% documented)  
Migration Routes (official and unofficial exit points)  
Primary migration corridor- to Thailand



# Scope for Regional Collaboration

## Bridging sectors and addressing policy gaps

1. Advocate, promote and bring solutions to implement migrant inclusion in UHC and national or local climate adaptation plans to address climate-induced health inequities
2. Facilitate the comprehensive integration of migration and health considerations into climate discussions, policies and strategies at sub-national, national, regional levels
3. Promote cross-border collaboration on climate and health, given the cross-border nature of climate-induced migration



## Emergency preparedness and response to climate shocks and disease outbreaks

1. Strengthen preparedness and response plans for public health threats linked to climate change, with a focus on points of entry and cross-border surveillance
2. Cross-border collaborative efforts can involve shared early warning systems, joint disaster management programs and coordinated health-care responses across borders
3. Support community-based disease surveillance, identify emerging health risks, (e.g., vector-borne and waterborne diseases, malnutrition, heat-related illnesses), and strengthen resilience in migrant and displaced communities.



## Regional Platforms such as ASEAN

**ASEAN Health Cluster Goal 3** To prepare and respond to environmental health threats and other hazards, including the health impacts of climate change in the region.

**ASEAN Health Cluster Goal 2** To enhance regional preparedness and response to public health emergencies and ensure effective disaster health management in the region.

# Scope for Regional Collaboration

## Climate-sensitive and migrant-responsive health service delivery

1. Strengthen the capacity of health systems to enhance climate resilience and inclusivity for migrants in areas affected by climate change, such as climate resilient infrastructure..
2. Adapt health service delivery and infrastructure operations to frequent climate-related shocks, especially in fragile and mobility contexts
3. Develop and implement tailored, affordable health-care solutions for migrants, such as mobile clinics and outreach, financing mechanisms



## Data Collection and Tools

1. Data collection and research on the influence of climate change on migrant health for evidence-based policymaking and decision-making programming
2. Provide necessary expertise and tools to track climate-related human mobility for public health purposes, through population mobility mapping and health, border and mobility management.
3. Facilitate the establishment of robust data collection and monitoring systems that capture climate related health and migration patterns, within and across countries

## Strengthening regular pathways for migrants

1. Create and expand safe, orderly, and legal migration channels as a viable adaptation strategy, which helps reduce health vulnerabilities associated with irregular movement.
2. Support the establishment and strengthening of migration-sensitive health systems in origin (pre- departure services) and in destination countries (care and outreach for migrants, and enhance private sector workplace policies)

# Thank You

## References:

1. INTEGRATING MIGRATION-RELATED CONSIDERATIONS IN RESPONSES TO CLIMATE CHANGE IN CAMBODIA, IOM , 2026.
2. THE IMPACTS OF CLIMATE CHANGE AND ENVIRONMENTAL DEGRADATION ON HUMAN MOBILITY IN LAO PEOPLE'S DEMOCRATIC REPUBLIC (DRAFT), IOM, 2024.
3. ASIA-PACIFIC MIGRATION DATA REPORT 2023, IOM, 2023.



SCAN FOR THE  
MIGRATION  
HEALTH  
HIGHLIGHTS  
INFOSHEET

