

Utilization of AI Cadastral Mapping Engine

This is not an ADB material. The views expressed in this document are the views of the author/s and/or their organizations and do not necessarily reflect the views or policies of the Asian Development Bank, or its Board of Governors, or the governments they represent. ADB does not guarantee the accuracy and/or completeness of the material's contents, and accepts no responsibility for any direct or indirect consequence of their use or reliance, whether wholly or partially. Please feel free to contact the authors directly should you have queries.



Contents



Solution

Why does the AI Cadastral Mapping Engine work?

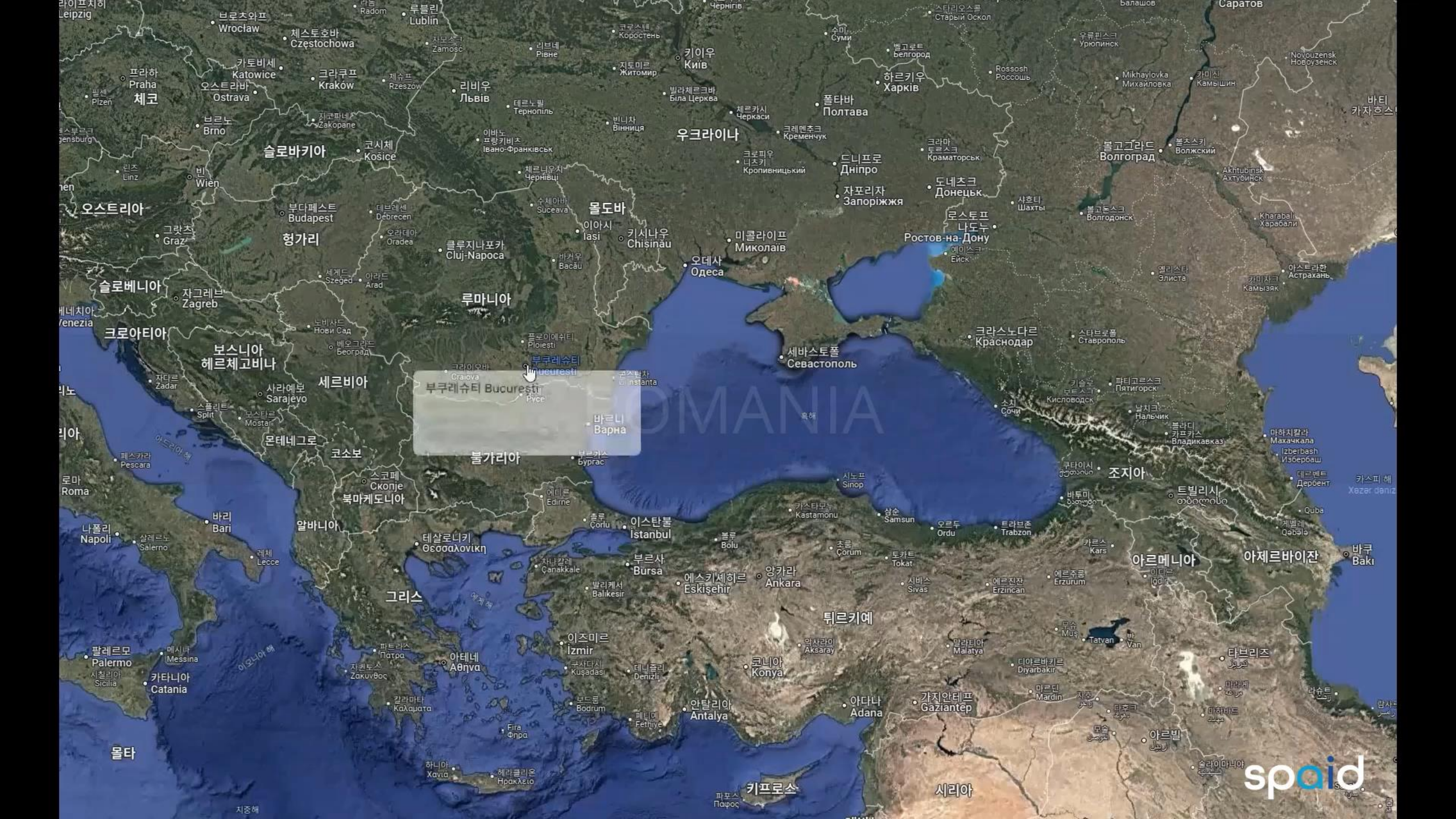
Technology

How is SPAID possible?

Future plans

The future utilizing SPAID's technology?

Why does the AI Cadastral Mapping Engine work?



부쿠레슈티
부쿠레슈티 București

AI2RE's Project Step (case location: Rumania)

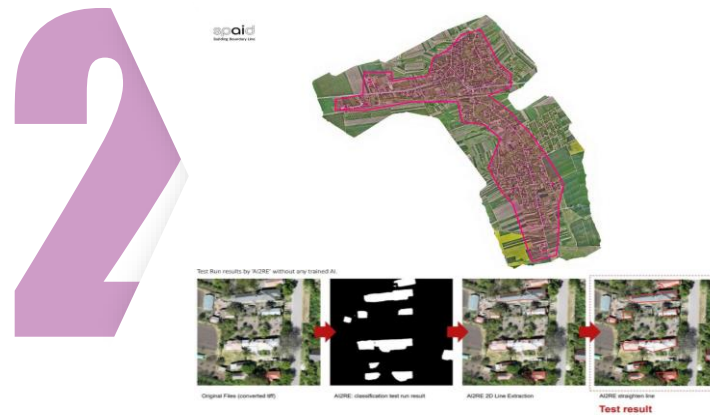
Visiting the InterGEO 2024



Visiting Cadastral Surveying Company in Rumania

- Producing Results for Certain Regions of Romania in 1 Day
- Collaboration request for cadastral surveying digitization project

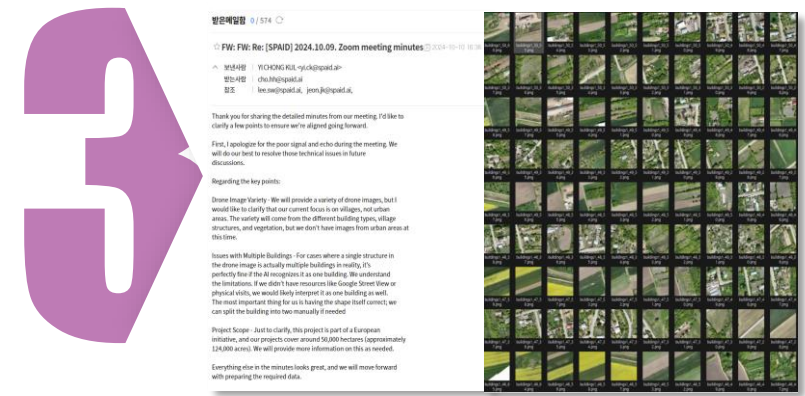
Reception & Inspection



Processing of building & pole type data

- Review of drone imagery and meeting(Zoom)
- Review of 360° image data and meeting(Zoom)

AI Training & Recognition



EU-funded cadastral surveying digitization

- 50,000ha
- Building and pole AI dataset development in Romania

SPAID's Process

**AI
Machine Learning**

**SPAID
Algorithm**

**3D Modelling
Automation**

STAGE 1

STAGE 2

STAGE 3

STAGE 4

Raw data (.geotiff)

Recognition/Classification

2D Data Extraction

3D Data Modelling



SPAID's AI2RE

Imagery Data Processing
 (Aerial imagery, based on 600km²)

2 day

AI2RE

As-is

Final Output Processing
 (Object Recognition, 2D Line, 3D Mass Model)

3 Week

AI2RE

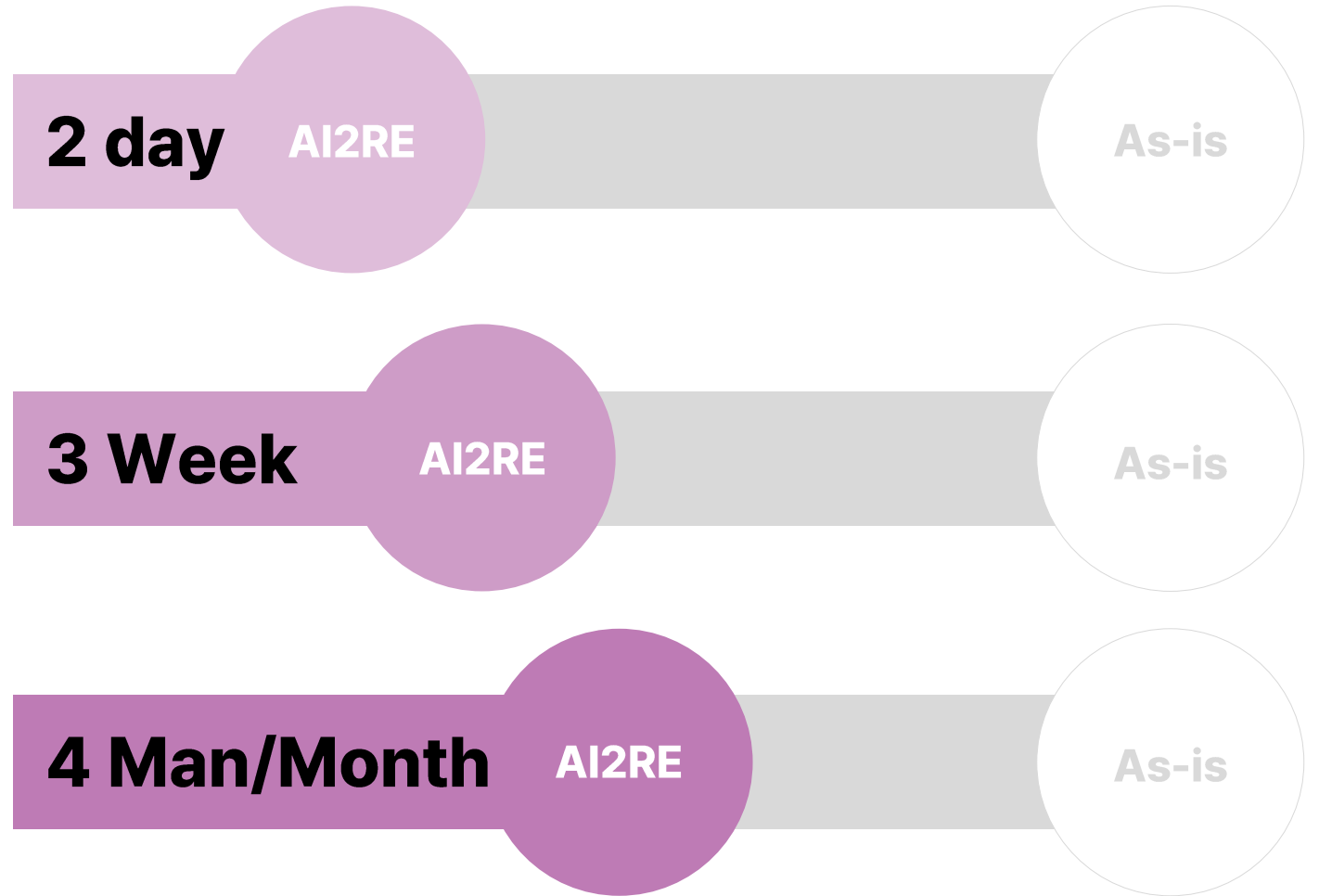
As-is

Human resources

4 Man/Month

AI2RE

As-is

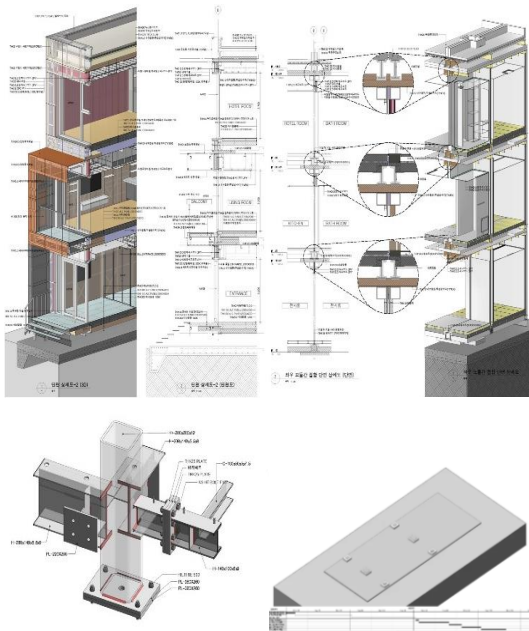


How is SPAID possible?

SPAID's 3D Modeling technology

BIM(Building Information Modeling)

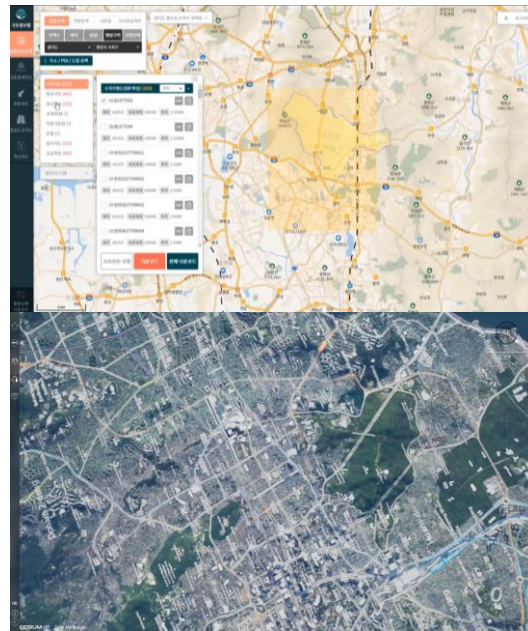
: Quantity Takeoff, 3D Fabrication Drawings



- Level of Detail 100~500
- Quantity takeoff available

Geospatial

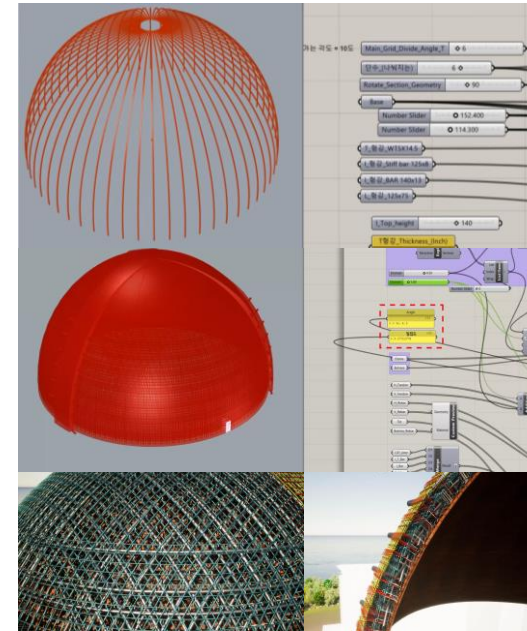
: 3D Map Creation



- Modeling of terrain, buildings, and roads based on public data

Algorithm

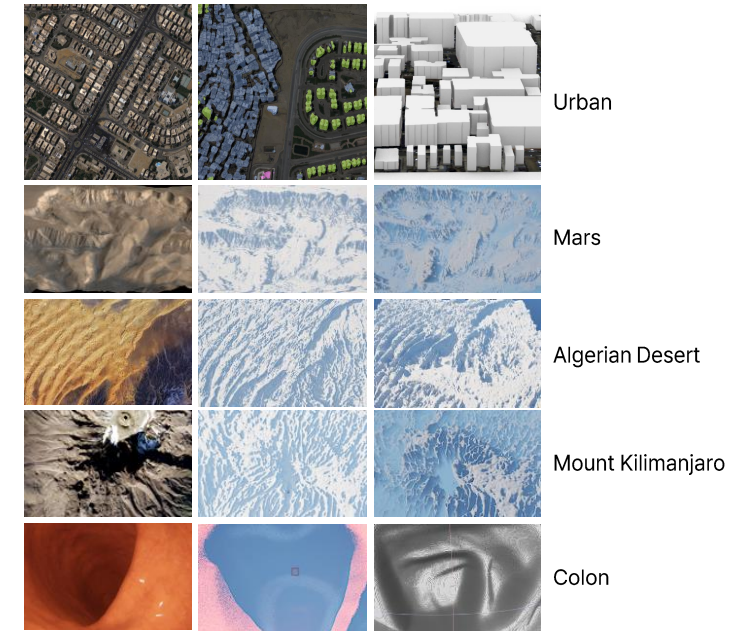
: Dome, Regular Pattern modeling



- Implementation of Dome algorithms
- Rapid response to design changes

AI

: Short-term / Hard to reach places

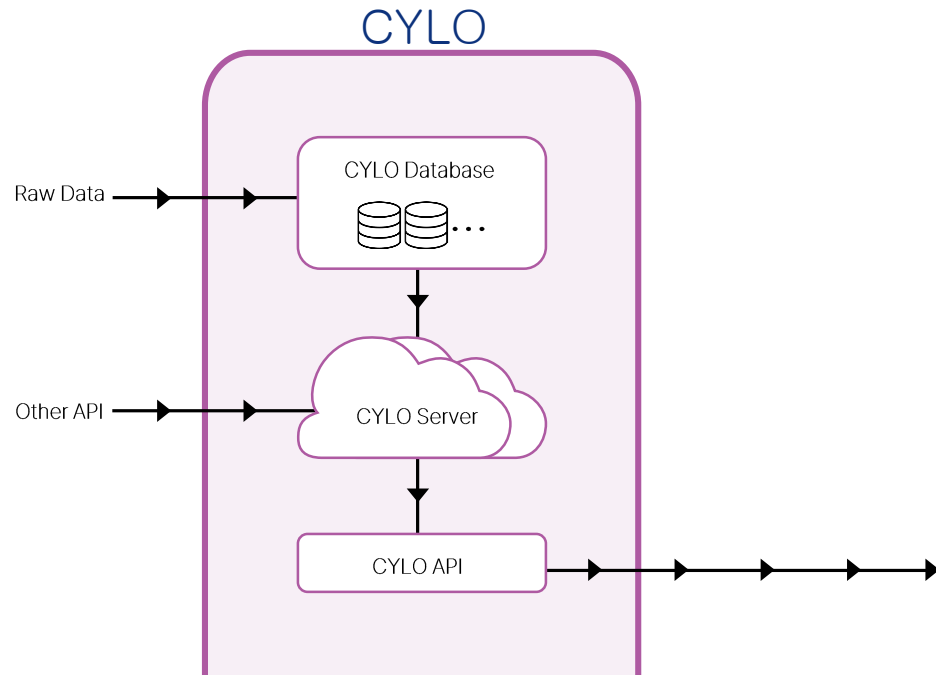


- Footprint extraction & 3D mass modeling based on Drone & Satellite imagery

SPAID's Data processing Engine / Digital Twin Platform

Engines

Automated Pipeline for Data Processing



Platform

AI based Cadastral Mapping and Data Utilizing



Imagery / Scanning data
Urban / Rural / Pole

The future utilizing SPAID's technology?

Who uses AI-based Cadastral Mapping ?





