

The views expressed in this presentation are the views of the author/s and do not necessarily reflect the views or policies of the Asian Development Bank, or its Board of Governors, or the governments they represent. ADB does not guarantee the accuracy of the data included in this presentation and accepts no responsibility for any consequence of their use. The countries listed in this presentation do not imply any view on ADB's part as to sovereignty or independent status or necessarily conform to ADB's terminology.



12TH ASIAN DEVELOPMENT BANK BUSINESS OPPORTUNITIES FAIR 2024

9-10 OCTOBER 2024 | 9 A.M. to 5 P.M. | ADB HEADQUARTERS, MANILA

HUMAN AND SOCIAL DEVELOPMENT

Investing in People. Empowering Futures.

Karin Schelzig

Director for Southeast Asia and the Pacific
Human and Social Development Sector Office

kschelzig@adb.org

9 October 2024

FOCUS AREAS OF THE HSD PIPELINE



Education

foundational learning • universal basic skills • building advanced skills • research and innovation through higher education • STEM and digital skills • climate-resilient education and green skills



Health

pandemic preparedness & response • responding to climate change impacts • health financing • health infrastructure • health sector governance • health workforce development • maternal & child health, aging, nutrition



Social Protection

comprehensive social protection policies and systems • integrated solutions with amplified development impacts • adaptive and shock-responsive social protection • digital social protection

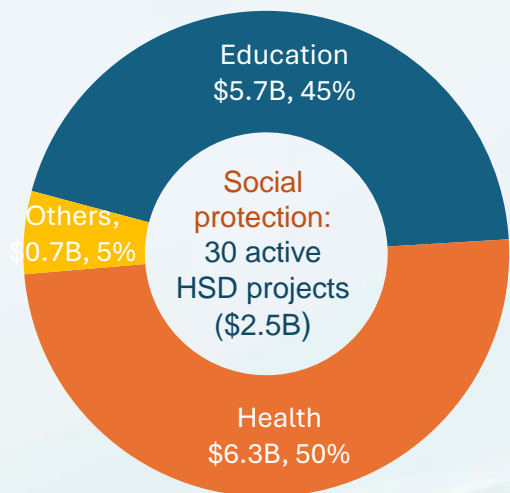


Social Development

Inclusive policies and institutions • equity in access to services, resources, opportunities • greater social and economic participation • aging societies • disability inclusion • the care economy



Active loans and grants
By region (as of 30 September 2024)



HSD PIPELINE 2024-2026

By Region	2024			2025			2026		
	TOTAL FIRM (\$ million)			TOTAL FIRM (\$ million)			TOTAL FIRM (\$ million)		
	#	ADB	Cofinancing	#	ADB	Cofinancing	#	ADB	Cofinancing
Central and West Asia	6	365.8	—	6	625.0	—	11	724.5	85.0
East Asia	3	297.2	—	4	250.0	6.0	1	50	—
South Asia	10	1,618.5	55.6	6	714.0	68.8	9	1,190.0	—
Southeast Asia	9	1,148.9	6.0	10	1,650.0	131.0	12	1,380.0	3.0
The Pacific	3	38.1	5.0	6	66.0	5.0	5	173.5	40.0
TOTAL	31	3,468.5	66.6	32	3,305.0	210.8	38	3,518.0	128.0