

Strengthen Climate and Disaster Risk

National Planning Department | |

Prime Minister's Office

National Emergency Management Office

| | Ministry of Meteorology, Energy, Information,
Disaster Management, Environment and Climate
Change and Communication

Centara – Grand, 22 June, 2023

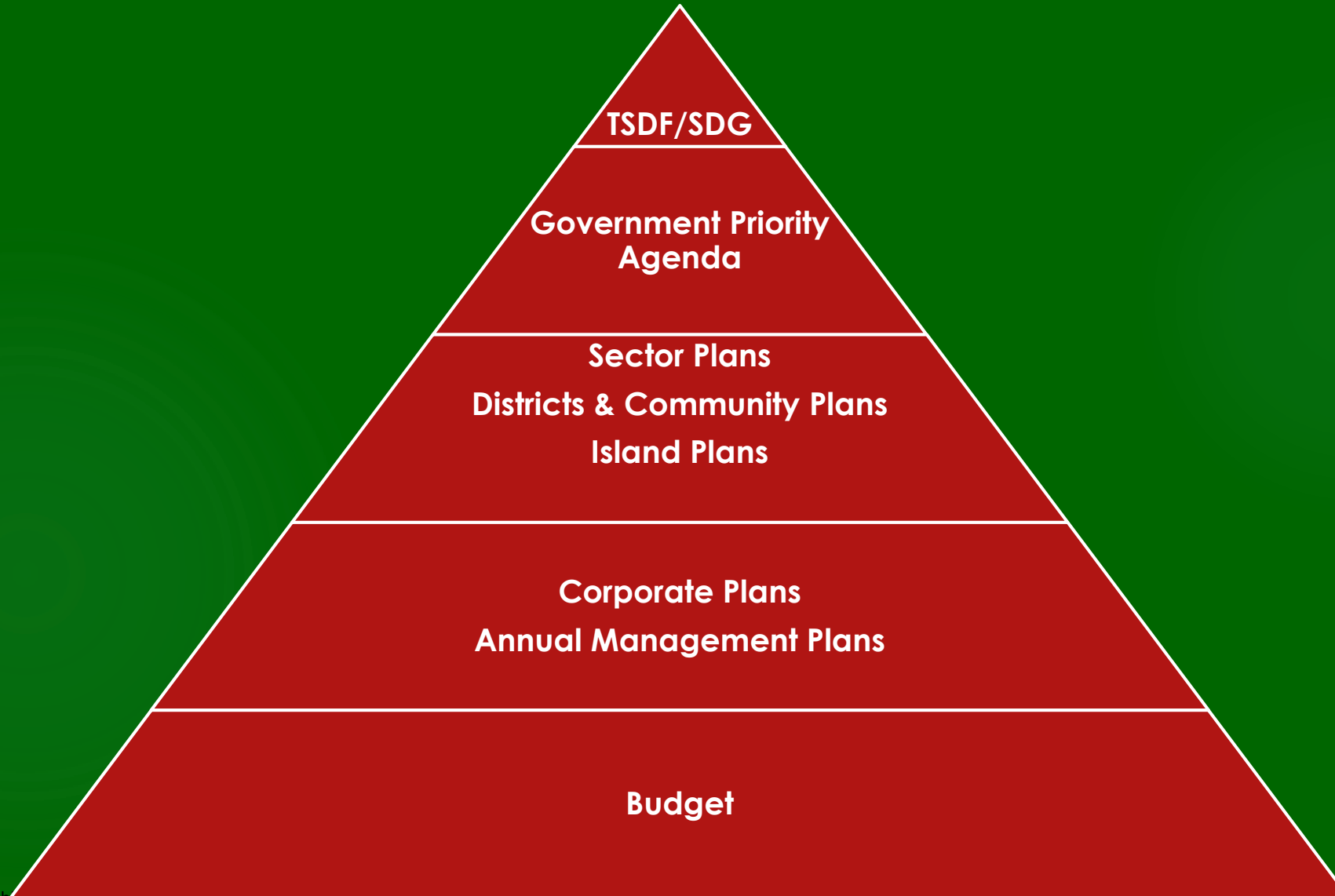


Outline

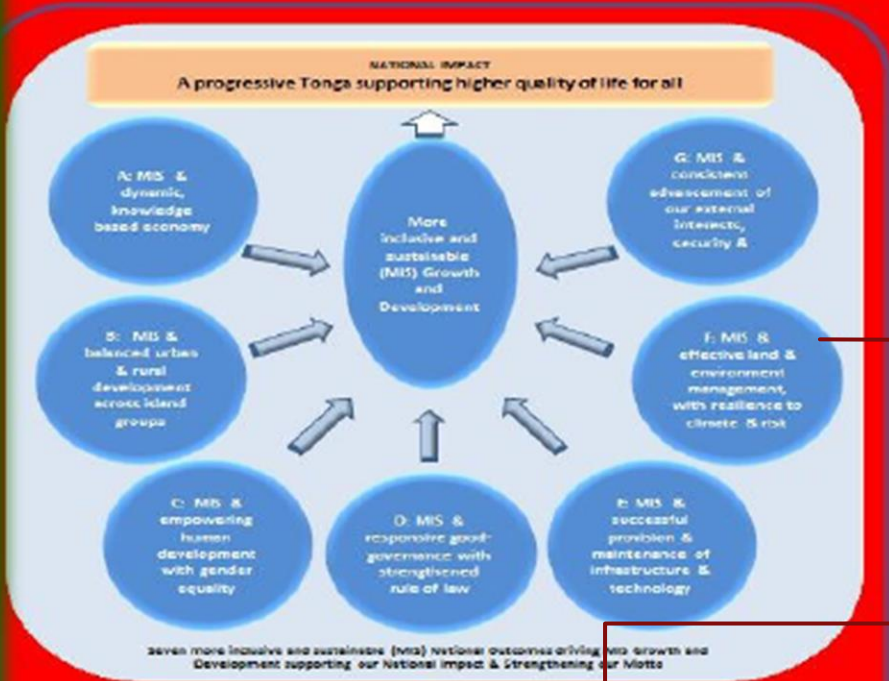
1. Cascade of Planning process
2. Tonga Strategic Development Plan
3. Government Priority Agenda
4. Risk integration and mainstreaming
5. Monitor and Evaluation



Cascade of Plans



National Plan



M O N I T O R I N G & E V A L U A T I O N

National Outcome: F, More inclusive, sustainable and effective land & environment management and resilience to climate and risk

Pillar 5: Natural Resources & Environmental Inputs



R E S U L T S A C H I E V E M E N T A L L L E V E L S

Organizational Outcomes:

- 5.1: Improved land use planning
- 5.2: Improved use of Natural resources
- 5.3: Cleaner environment
- 5.4: Improved resilience to natural events & impacts of climate change



Government Priority Agenda

A. National Resilience

- GPA 1: Building resilience and safer platforms to natural disasters
- GPA 2: Reducing Relative Poverty and increasing quality of social protection
- GPA 3: Mobilizing National and International response to effectively reduce supply and the use of Illicit Drugs

B. Quality of Services and Affordability

- GPA 4: Improving education for all
- GPA 5: Improving access to quality and affordable healthcare system focusing COVID-19 / Non-Communicable Diseases (NCDs)
- GPA 6: Building quality and easy access to government services, public enterprises

C. Progressive Economic Growth

- GPA 7: Maximize trade opportunities
- GPA 8: Improving quality and access to public infrastructures
- GPA 9: Strengthen bilateral engagement with accredited partner countries

Government Priority Agenda Targets



Target 12: Strengthened capacity and awareness for all families and communities of climate change and disaster risk management with special attention and capacity for disaster preparedness, response, recovery, rehabilitation and building back better



Target: By end of 2023, i) National Disaster Risk Reduction and Management Plan is developed ii) Whole-of-government budget and planning processes integrate Disaster Risk Management processes



Target: By end of 2023, i) EOCs are established in Eua, Niuatoputapu and Niuafu'ou ii) A fully functioning emergency management communications system is integrated with the National Emergency Operations Centre



Target: By end of 2023, rollout of VEMC Capacity Development and VEMP Implementation plan underway

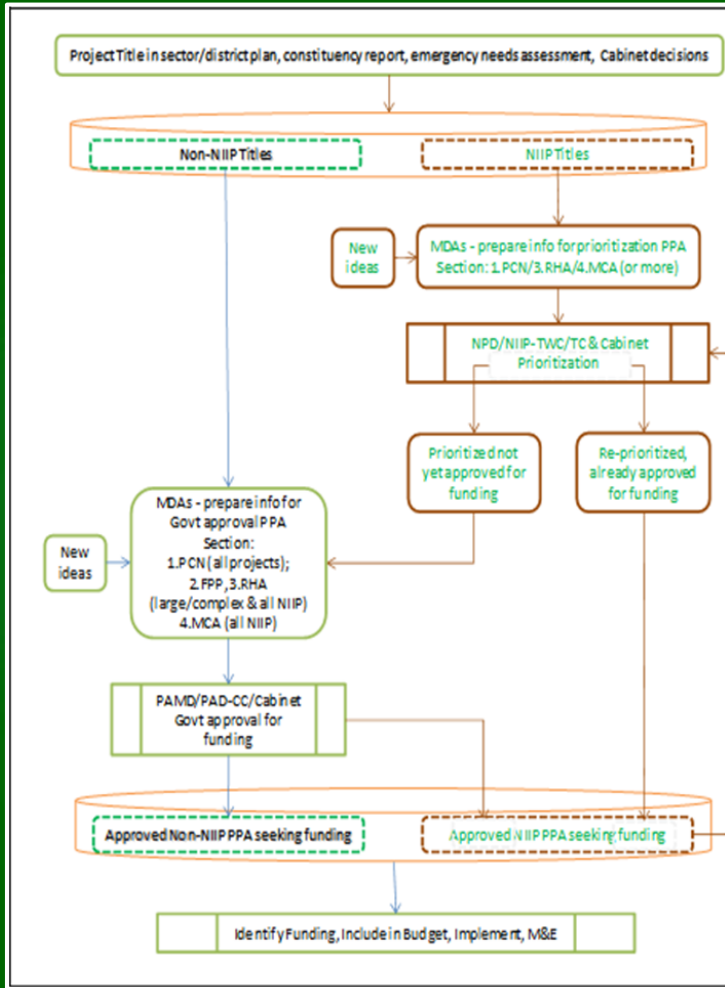


Target: To expand GIS application progressively with a focus on advancing emergency management, disaster risk reduction, and environmental monitoring

GPA 1: Building resilience and safer platforms to natural disasters and meeting the ongoing challenges of Climate Change (tropical cyclones, sea level rising, tsunamis, global pandemic) and address economic crisis

Risk integration

National Infrastructure Investment Plan (NIIP) 3 Hunga Tonga Hunga Ha'apai update



3. Risk and Hazard Assessment

This section should be completed for all projects other than simple non-NIIP projects. Use [Guidance Annex 2: Risk and Hazard Assessment Toolkit](#) Part 1 to identify the hazard and thus critical risks to the output; and Part 2 to identify the hazard and thus critical risks from the outputs. After identifying the hazards record them and their related information in the two tables in this section. The number rated in column 5 as "include" and as "cancel or redesign" is used in section 4. for project risk, criteria 2.1 and 2.2. [if you came from [Criterion 2.1](#) or [Criterion 2.2](#) ctrl+click here to return].

NB:

Hazard = an event (natural or human made) which may cause disruption of damage
Risk = likelihood of hazard x degree of impact of hazard (or vulnerability)

1	2	3	4	5	6	7		
Hazard No.	Potential impact	Likelihood	Neg. impact degree	Rate Response	Risk Management	CP Link	Budget Est '000	
							Local	Aid
Risks to the Output of the Project								
Risks 2.5ks from the Output of the Project								

Proj. No.	MDA or Public Enterprise	Project Title ^a	MCA score ^b	GPA score ^c
114	TCL	New international secondary internet cable linking VV and HH	82.2	93.3
018	OLA	New Fale Alea (Parliament House and Office Complex)	40.0	93.3
014	MOH	Upgrading of Vava'u Hospital (Prince Ngu Hospital)	77.8	93.3
031	MJP-J	New Law Court Complex (Supreme and Magistrate)	46.7	93.3
022	TWB	Centralized Tonga Water Board and Village Water Supply Tongatapu	91.1	91.1
064	MOH	Upgrade of the health centres (Kolovai, Kolonga), new clinic Sopu (TT)	75.6	88.9
024	MEIDECC	Multi-Hazard Early Warning/Emergency Operations Centre (Niuas)	88.9	88.9
029	TWB	Improved Water Supply System in Vava'u (Greater Neiafu)	88.9	88.9
020	TWB	Improved 'Eua Water Supply System	84.4	84.4
042	TCC	Upgrade and Expansion of 'Eua Mobile and Fixed Networks	84.4	84.4
049	HMAF	Upgrade of Touliki coastal protection structure	84.4	84.4
054	TMCL	Talamahu (TBU, Nuku'alofo) and 'Utukalungalu (Vv) Market upgrade	84.4	84.4
069	TPL	Power network relocation, extension, connection, HTHH villages	84.4	84.4
091	TCC	Replacement of Telcoms tower, BTS, standby generator Kanokupolu, Ohonua	84.4	84.4
113	TAMA	Upgrade of Small Industris Center - Ma'ufanga, TT	84.4	84.4
001	TPL	Nuku'alofo Power Network Upgrade Project (NNUP) Area 4	91.1	84.4
055	TPL	Additional/Replacement Generators (TBU, Vv, Hp and 'Eua)	91.1	84.4
017	MOH	Upgrading of a new Public health building (Tongatapu)	80.0	84.4
103	MOI	'Ohonua bridge ('Eua)	75.6	84.4
019	MOI	Fanga'uta Evacuation Bridge and Roads	77.8	84.4

Mainstreaming

Joint National Action Plan 2 on Climate Change and Disaster Risk Management

Target 12: Community Resilience

Process Indicators

T12_1.3. 1p: Vulnerability baselines for community resilience developed.

T12_1.3.3p: A multi-hazard disaster preparedness, response and recovery plan for community resilience developed.

T12_1.4.1 Develop standard resilience guidelines for all community engagement activities;



Ref	Activity	Process Indicator PI	Mapping of JNAP to MEIDECC CP		
TARGET 12: COMMUNITY RESILIENCE			NEMO CP SECTION		
OBJECTIVE: MAINSTREAMING					
	ACTIVITIES	INDICATORS	OUTPUT	ACTIVITY	INDICATORS
1.4.1	1.4.1 Develop a standard resilience guidelines for all community engagement activities;	1.4.1_PI A standard resilience guideline for community engagement developed	5.02: To improve community resilience to extreme natural events and impact of climate change	Conduct awareness sessions in communities and media programming	Increased awareness and dissemination of risk information in wider community by the community
1.4.3	1.4.3 Review and revise all community development plans to ensure they are aligned with the adapted JNAP 2 targets for a <i>Resilient Tonga</i>	1.4.3_PI Resilient Tonga targets and vulnerability baselines (see Activity 1.3.1) incorporated into community development plans	5.02: To improve community resilience to extreme natural events and impact of climate change	Conduct awareness sessions in communities and media programming	Increased awareness and dissemination of risk information in wider community by the community

Monitor & Evaluation

Ministries, Department and Agencies (MDA) Corporate Plans bi-annual M&E reports

Output 18: Expand the implementation of Special Management Area Program and Fish Aggregated Device development for coastal communities. (Budget: \$394,200) (JNAP2: T8 & 4_4.2.1p, T4_4.2.3, T1,4,12_1.3.3p)						SDG	
Activity	KPI	2021/22 (baseline)	2022/23	2023/24	2024/25	TARGETS #	INDICATOR #
72. New SMAs established with management plans developed with local communities. <i>Note: PMU contribution in AMP</i>	Number of new SMAs established	5	5	5	5	14.2	
						14.5	14.a.1
						14.7	14.b.1
						14.a	14.c.1
						14.b	14.5.1
						14.c	14.7.1
73. Implementation of new SMAs with coastal communities <i>Note: PMU contribution in AMP</i>	Number of new SMAs implemented	5	5	5	5	14.2	
						14.5	14.a.1
						14.7	14.b.1
						14.a	14.c.1
						14.b	14.5.1
						14.c	14.7.1



CP Outputs	CP Activities	CP Key Performance Indicators (KPI)	FY2022/23 Targets		Annual Target for FY 2022/23	Due Dates	Responsible Division	If you meet your target or go beyond, please share best practice(s). If you did not meet your target, please advise on specific areas that need strengthening.
			1st Biannual Target (July - Dec)	1st Biannual Actual (July - Dec)				
Output 18: Expand the implementation of Special Management Area Program and Fish Aggregated Device development for coastal communities.	72. New SMAs established with management plans developed with local communities.	Number of new SMAs established	5	1	5		FSED	1) Developing Management Plan for Utui Note: Next submission will be the new SMAs for 2022 – 2023 (Longomapu, Utui, Hihifo Hp, Tungua, 'Ahau)
	73. Implementation of new SMAs with coastal communities Note: PMU contribution in AMP	Number of new SMAs implemented	0	0	5 PMU: 1	End of FY	FSED	Implementation of newly gazette SMAs from 2021 – 2022 will be starting in 2023 (Okoa, Lotofoa, Fotua, Fangaleounga, Fotuhaa) Next announcement will be the new SMAs for 2022 – 2023 (Longomapu, Ululei, Hihifo
	75. Monitoring and evaluation of existing SMAs. Note: PMU contribution in AMP	Number of monitoring and evaluation conducted	0	24	266 PMU: 1	End of FY	FSED	1) 24 SMAs - 7 Tongatapu - 14 Ha'apai, 3 Eua
	76. FADs fishery development and implementation	Number of managements approved	0	0	1	End of FY	FSED	FAD POLICY ALREADY ENDORSED, FAD MANAGEMENT PLAN IN PROGRESS
		Number of FAD deployment and monitored	6	12	10	End of FY	FSED	12 fads deployed - 10 TBU, 2 VV. FAD project with FAD targeting to deploy 50 FADs in Tongan waters for the next 10 years



Malo 'aupito | Thank You | Khob Khan Ka

...to be continued by National Emergency Management Office on what is in place and currently implemented