

NEMO



Kingdom of Tonga



National Emergency Management Office

Ministry of Meteorology, Energy, Information, Disaster Management, Environment, Climate Change & Communications (MEIDECC)

National Emergency Management Office (NEMO)

Ph# : 26340 / 28242

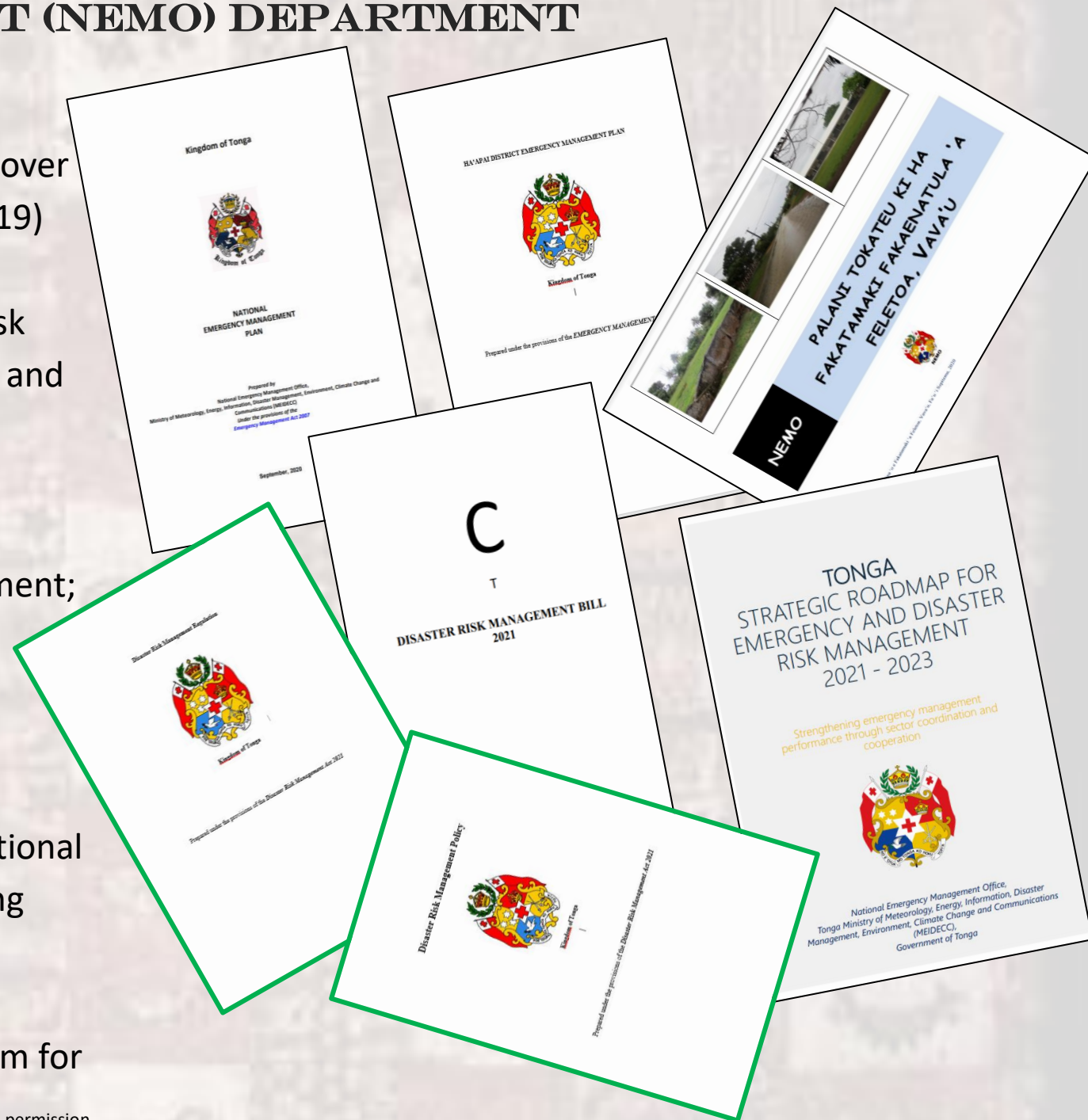
Toll free # :08006366

This is not an ADB material. The views expressed in this document are the views of the author/s and/or their organizations and do not necessarily reflect the views or policies of the Asian Development Bank, or its Board of Governors, or the governments they represent. ADB does not guarantee the accuracy and/or completeness of the material's contents, and accepts no responsibility for any direct or indirect consequence of their use or reliance, whether wholly or partially. Please feel free to contact the authors directly should you have queries.

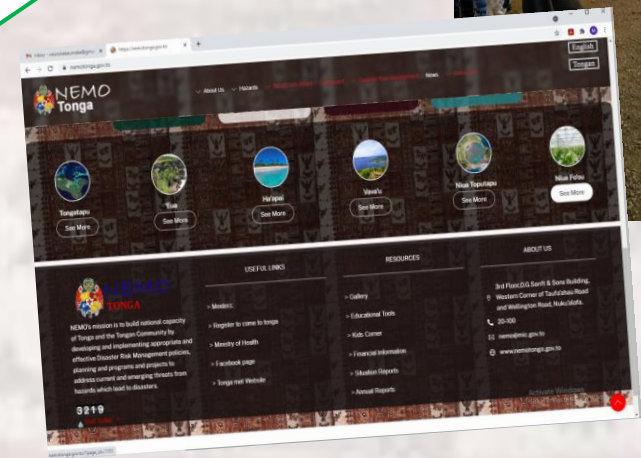
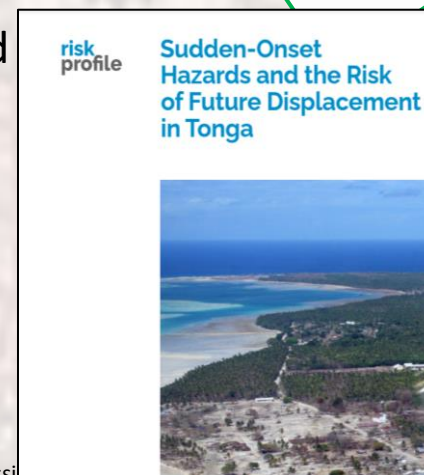
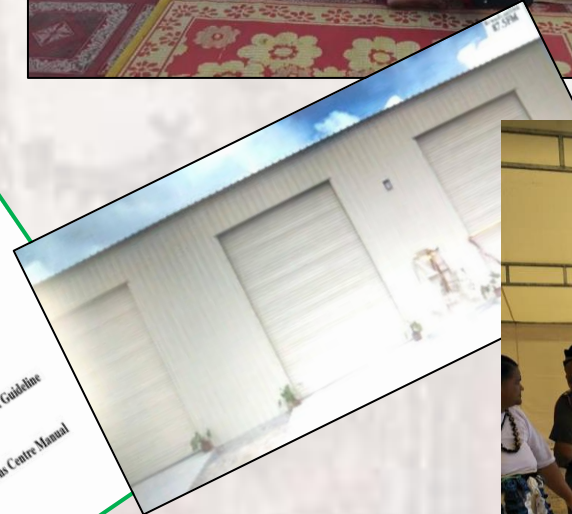
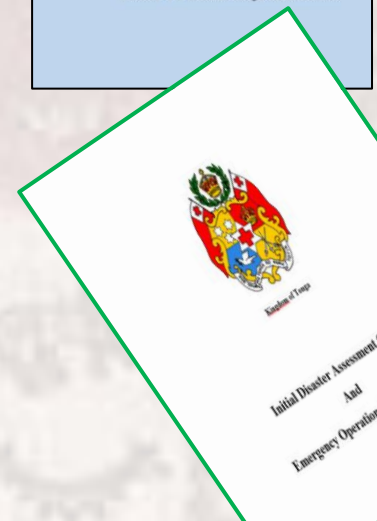
PROGRAM 5: DISASTER MANAGEMENT (NEMO) DEPARTMENT

1. Review all Disaster Management Policies In Tonga to cover the provisions for health emergencies such as COVID-19) and also to align with global disaster risk reduction frameworks such as Sendai Framework for Disaster Risk Reduction and regional frameworks; including District and Village management plans for each island group, as required.
2. Complete Emergency Management Act review;
3. Complete Strategic Roadmap for Emergency Management;
4. Draft Disaster Risk Management Regulation;
5. Draft Disaster Risk Management Policy Framework;
6. Strengthen NEMO institutional capacity to function as envisioned by new (proposed draft) Disaster Risk Management Act and to effectively coordinate the national Disaster Risk Management Processes in Tonga including recruitment to provide support;
7. Mainstreaming Disaster Risk Reduction into national development and enhance Public Financing Mechanism for

Disaster Risk Management in Tonga;



8. Draft inclusive policy for disaster risk management;
9. Conduct a national disaster risk assessment including vulnerability and capacity mapping (by island group);
10. Continue to build awareness of the general public including schools and communities on disaster risk reduction/management through awareness programs including observation of IDDR Day on each island group;
- 11. Enhance national disaster preparedness through prepositioning of relief materials; warehouse management and; conducting national drills; review of IDA process and building a IDA team in each Islands;**
12. Enhance NEMO information management system (catalogue and index processes, establish record keeping processes);
13. Review Communication plan for information sharing and consistent messaging and inclusion of migrants and minority group's needs;
- 14. Strengthen cluster systems and emergency coordination mechanism;**
15. Establish Disaster Displacement Monitoring system in Tonga.





Disaster Preparedness



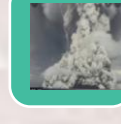
Tropical Cyclone
(November – April)



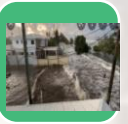
Drought
(May – October)



Flooding
(November – April)



Volcanic Eruption



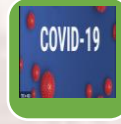
Tsunami



Earthquake

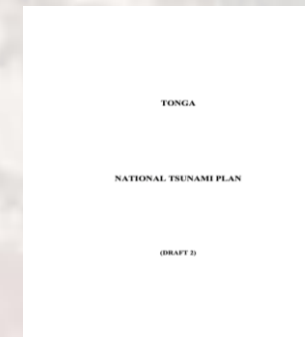


Tornado



Pandemic

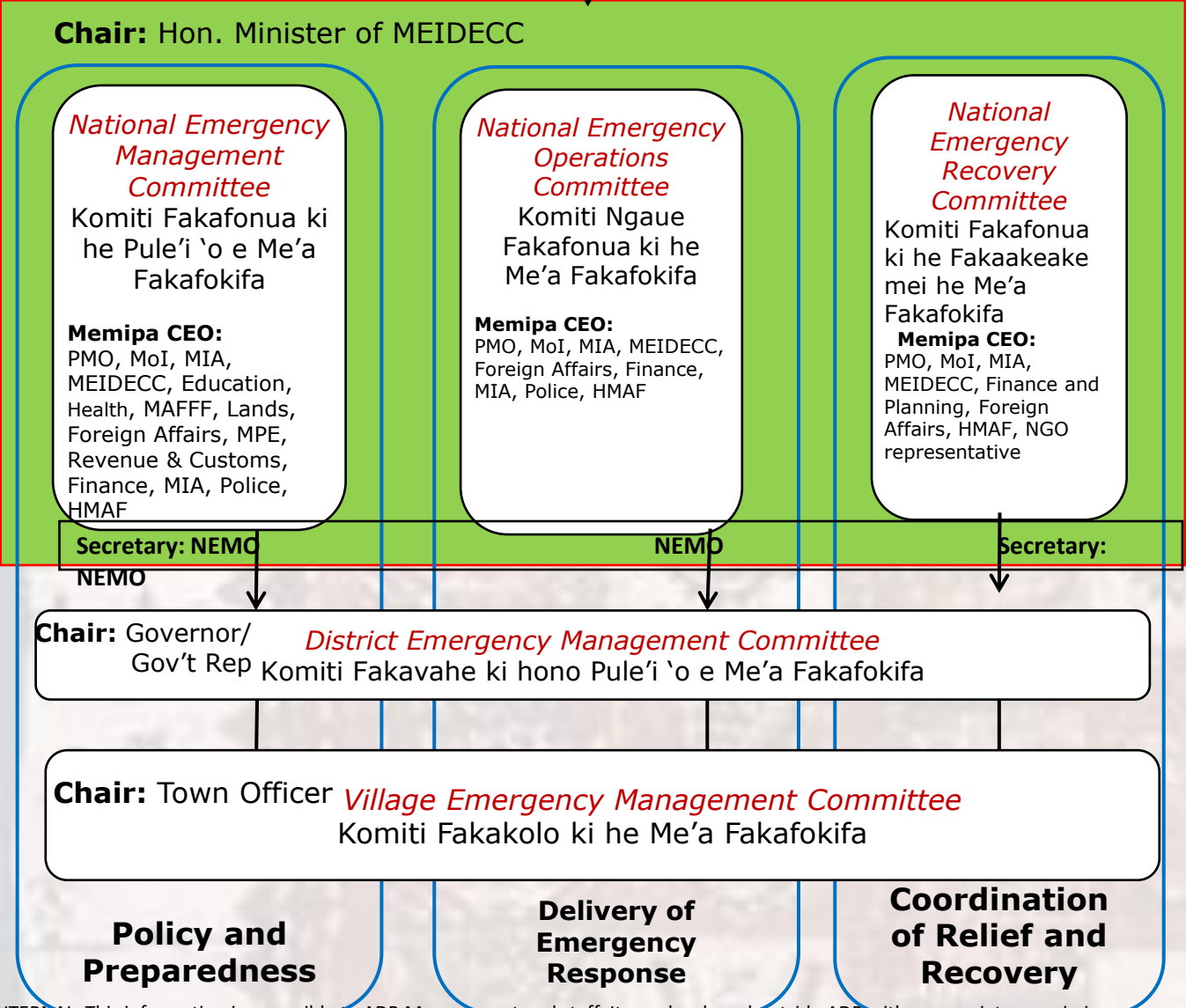
Man Made hazards; i.e, oil spill, plane crash etc.





**National Disaster Council
(CABINET)**
Kosilio Fakafonua ki he
Me'a Fakafokifa

Institutional Arrangements



NEMP

- Built upon the existing national arrangement; the existing institutions at the national, district and community level.

DEMP

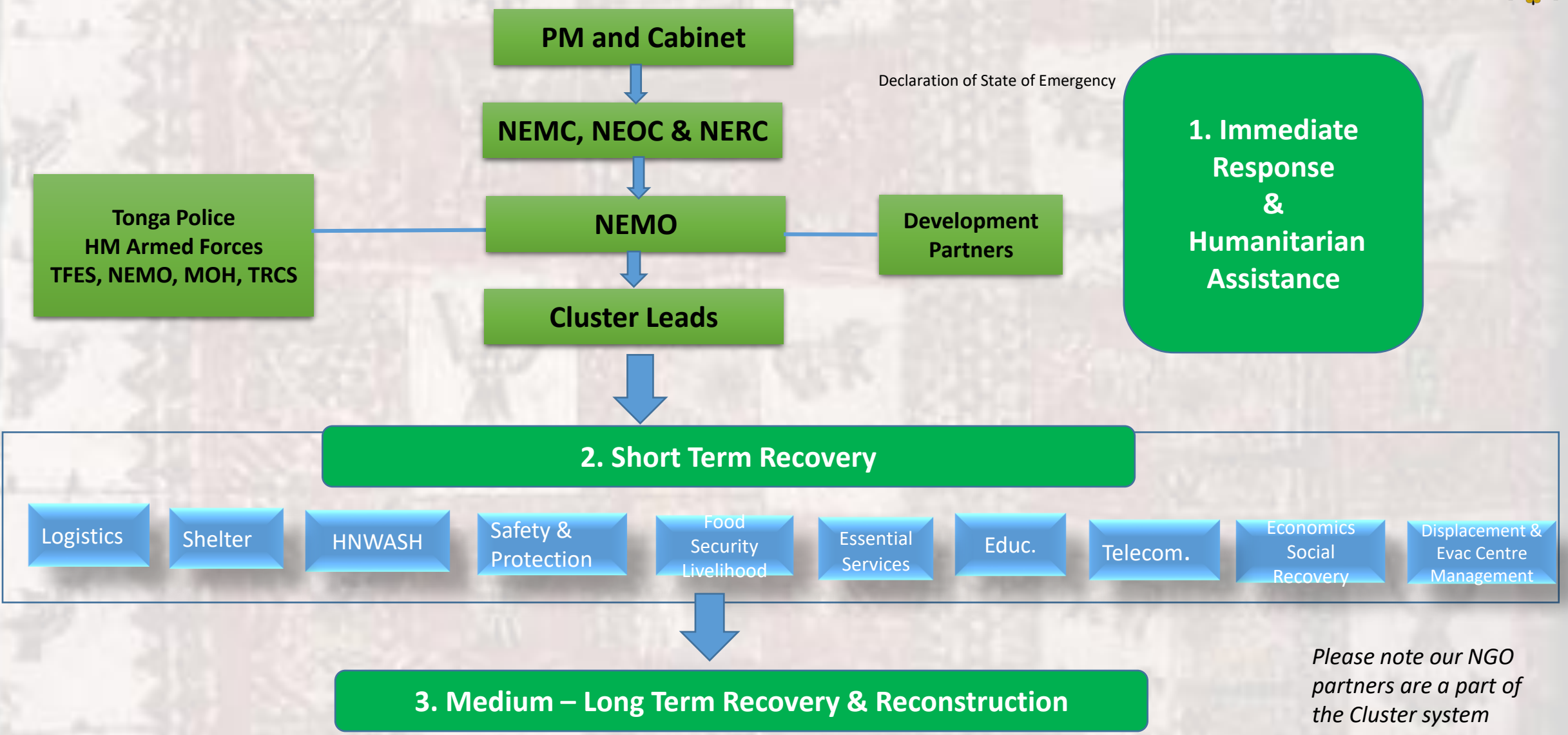
- Communities have their own Village Emergency Management Plans, SOPs

VEMP

- * There are four District Emergency Management Committees and District Emergency Management Plans
- * 121 established Village Emergency Management Committees and 121 launched Village Emergency Management Plans (desktop review completed currently underwat



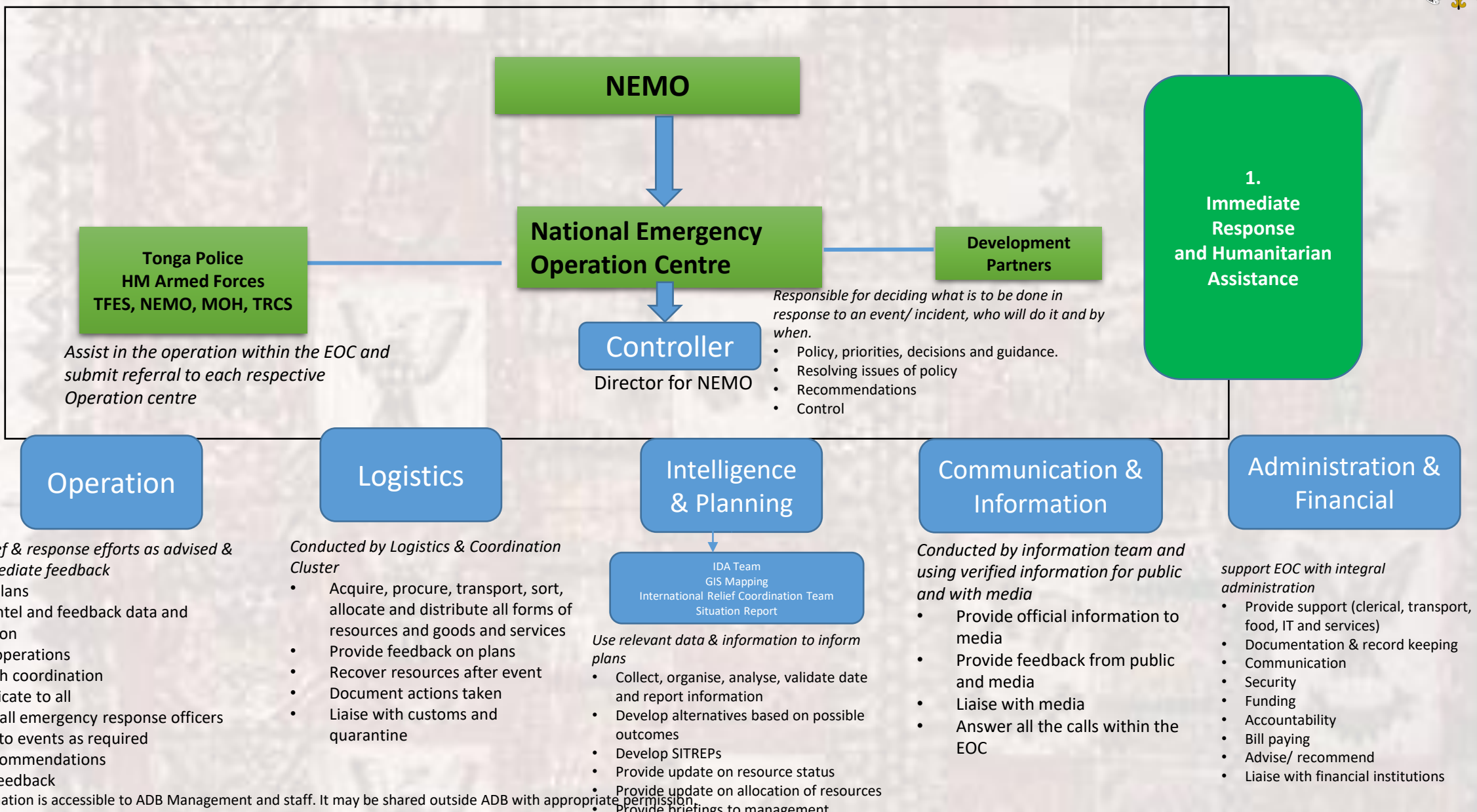
Emergency Operation Structure



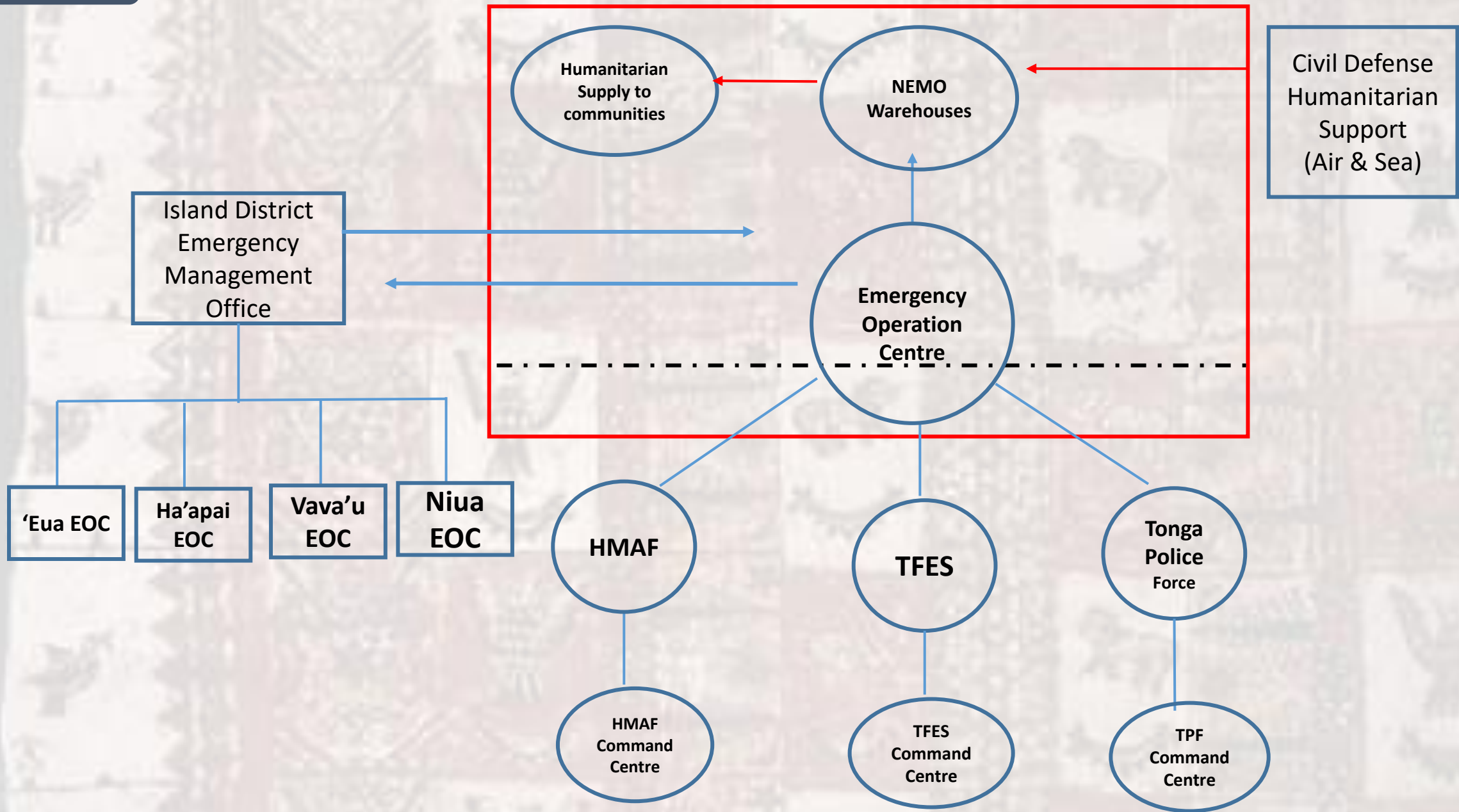
Please note our NGO partners are a part of the Cluster system



Structure of the Emergency Operation Centre



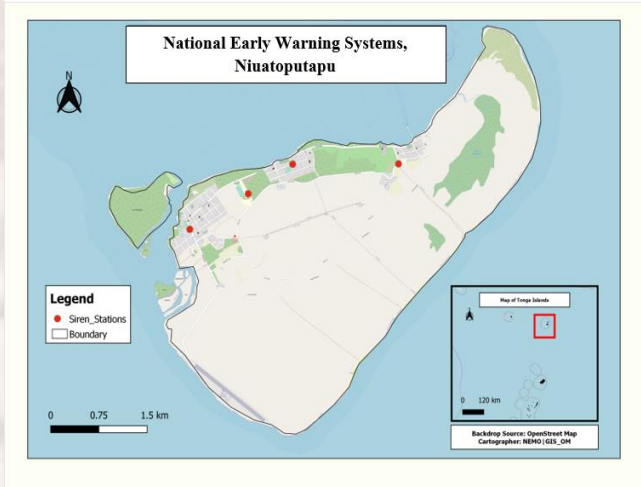
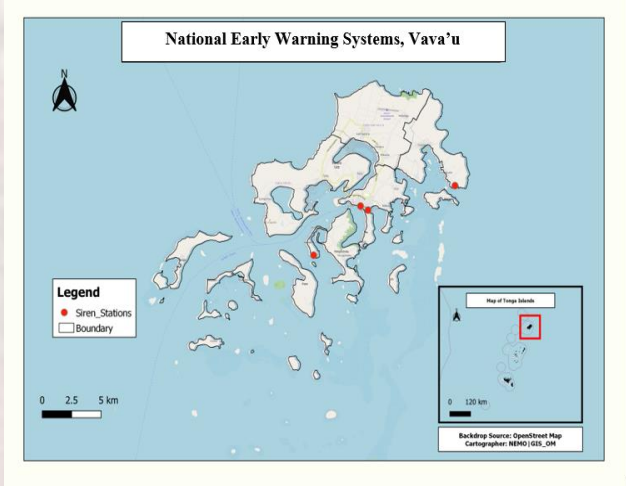
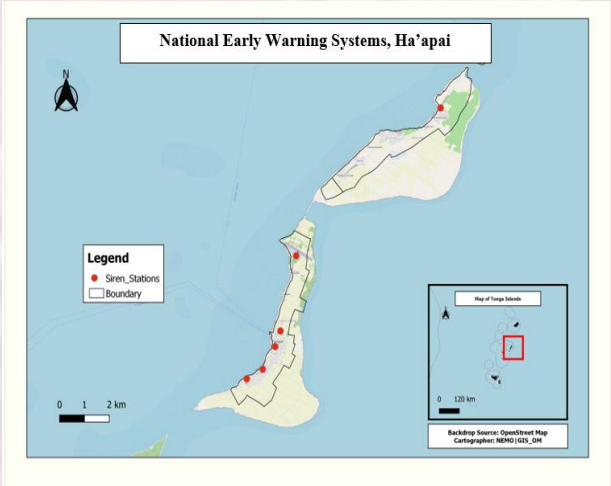
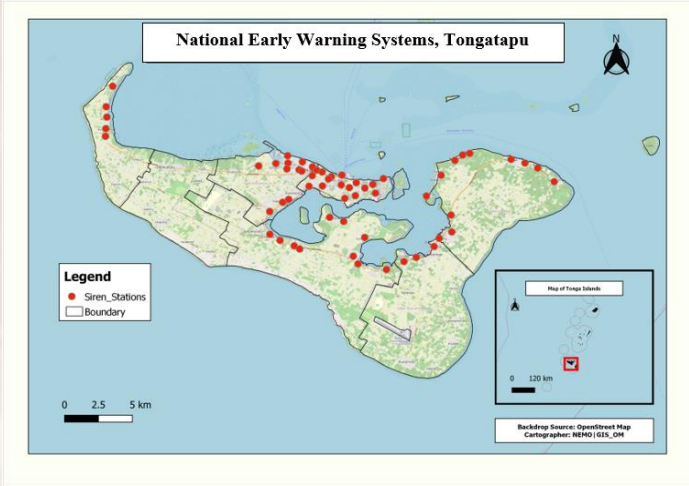
2 EOC Links to District Emergency Operation Centres and First Responders Command Centres



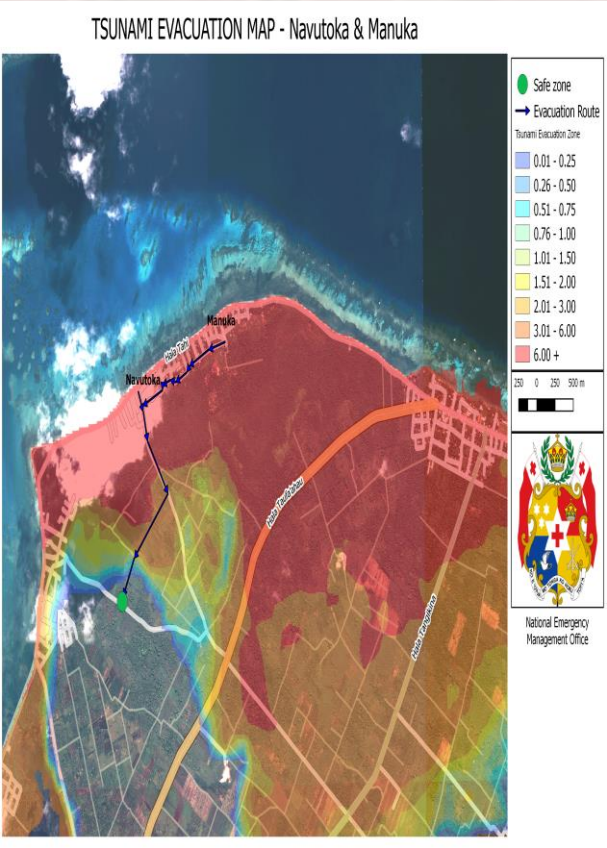
National Early Warning System



Location	Quantity
Tongatapu	60
'Eua	1
Ha'apai	6
Vava'u	4
Niutoputapu	4
TOTAL	75



TSUNAMI HAZARD MAPS



There are identified capacity to develop these, however technical support is still needed to strengthen the capacities of these local officers (Geology, GIS and NEMO)



TSUNAMI DRILLS



*Exercise Piha: 2013
Vahe Hahake
Nukuleka - Afa*

*Exercise Safely to
Safety: 2017
GPS Kolomotu'a*

*Exercise Safely to Safety: 2021
Lifuka Schools
EOC at Ha'apai*



Pictures 3 & 4: Children from the GPS Pangai evacuating their classrooms and following their evacuation route to their assemble zones



Picture 5 & 6: Students from Tailulu and St. Joseph Colleges evacuating their school premises and following their evacuating routes to the assemble areas.



Pictures 7 - 10: Teachers from GPS Tongaleleka, Ha'apai High School, St. Joseph College, Tailulu College and GPS Pangai taking roll and final head count at each of their respective assemble areas.



Picture 11 - 13: First Responders from the Tonga Red Cross Society, His Majesty's Armed Forces, and Tonga Fire & Emergency Services helping distress students/child get to the assemble areas

GPS Tongaleleka, GPS Pangai, GPS Koulo, Ha'apai High School, Tailulu College and St. Joseph College students were the participants, with the First Responders supporting in the safe evacuation from the physical locations to the meeting points/ assemble areas, with Tonga MET supporting with the broadcasting. Further instruction was disbursed by EOC in Lifuka.

Ha'apai's EOC was staffed by NEMO, the First Responders, MEIDECC Officers and volunteer officers from the Governor's Office and the Ministry of Revenue and Customs.



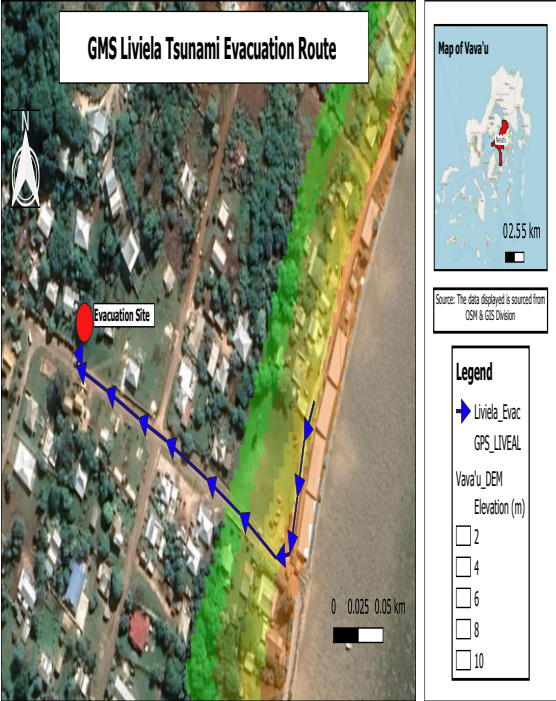
On Friday 5th November 2021, the World Tsunami Day was marked with program conducted by the Geo-Hazards Unit of Ministry of Land and Natural Resources, with the support of NEMO (with key focus on disaster risk management – prevention, mitigation, preparedness, response, recovery) and Tonga MET (with key focus on early warning systems).



The exercise was made possible with the collaboration of all emergency agencies – HMAF, Tonga Police, Tonga Fire & Emergency Services, NEMO, Tonga Meteorological Services.

Highlights of Safely to Safety Tsunami Drill 2022

GPS Lifuka, Vava'u



GPS Nukuleka & GPS Navutoka

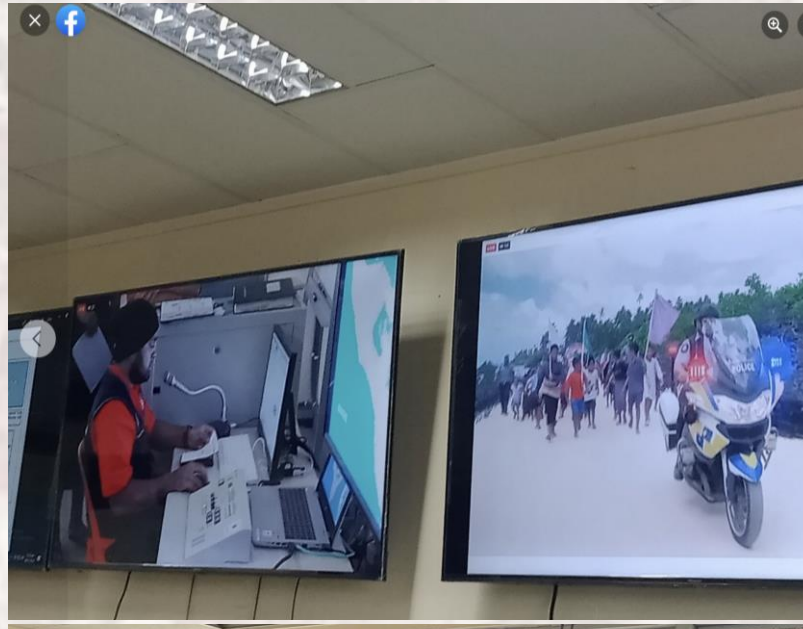


Tsunami Drill at Tongatapu



Tonga Meteorological Centre

Emergency Operation Centre



may be

Evacuation Centres



Kingdom of Tonga





Information, Education & Communication Materials

IEC Materils	Status	Way Forward
<ul style="list-style-type: none"> 1 minute Radio Jingles (English, Tongan, Japanese, Fijian) 	Completed (currently on broadcast)	<ul style="list-style-type: none"> Mandarin French
1 minute videos	Completed – Local television, line ministries and private sectors	<ul style="list-style-type: none"> Translation into Fijian, Japanese and Fijian. Tsunami Sign Boards sensitizaiton
Social media tiles	Completed	Upload onto social media
Brochures	Completed	Printing and dissemination
phamplets	Completed	Printing and dissemination
Tsunami Sign Boards	Ongoing	installation
Banners	Completed	Printing and dissemination
Posters	Completed	Printing and dissemination



Funded by UNICEF


- Foreign Missions to Tonga assisted with the translations
- Need for funding to mass produce for community dissemination

Disaster Risk Reduction Community Awareness Programs



We spend \$1 in preparedness in order to save \$7 in the recovery phase!

As we move into the future.... Let us focus on the recovery by building HOMES and not houses!



Malo ‘Aupito