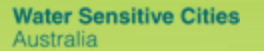


NATURE AND CLIMATE NEXUS

# Nature-Based Solutions for Urban and Rural Landscapes

Lecture Series + Project Design Clinic  
17–19 September 2024 • ADB Multifunction Halls 2 and 3 •  
Hybrid



This training is organized by the **ADB Environment Group** together with the **Water and Urban Development Sector Group**, and the **Agriculture, Food, Nature, and Rural Development Sector Office**.

This is not an ADB material. The views expressed in this document are the views of the author/s and/or their organizations and do not necessarily reflect the views or policies of the Asian Development Bank, or its Board of Governors, or the governments they represent. ADB does not guarantee the accuracy and/or completeness of the material's contents, and accepts no responsibility for any direct or indirect consequence of their use or reliance, whether wholly or partially. Please feel free to contact the authors directly should you have queries.

DAY 1

# TRAINING OVERVIEW



# The Nature Conservancy



A leading global conservation organization with a mission to protect the lands and waters on which all life depends



**70+**  
YEARS

**76**  
COUNTRIES AND  
TERRITORIES

**900**  
SCIENTISTS

**6,000**  
STAFF

**1M+**  
MEMBERS

# Water Sensitive Cities Australia, Monash University

Continuing the work of a 9 year \$120M research to practice initiative

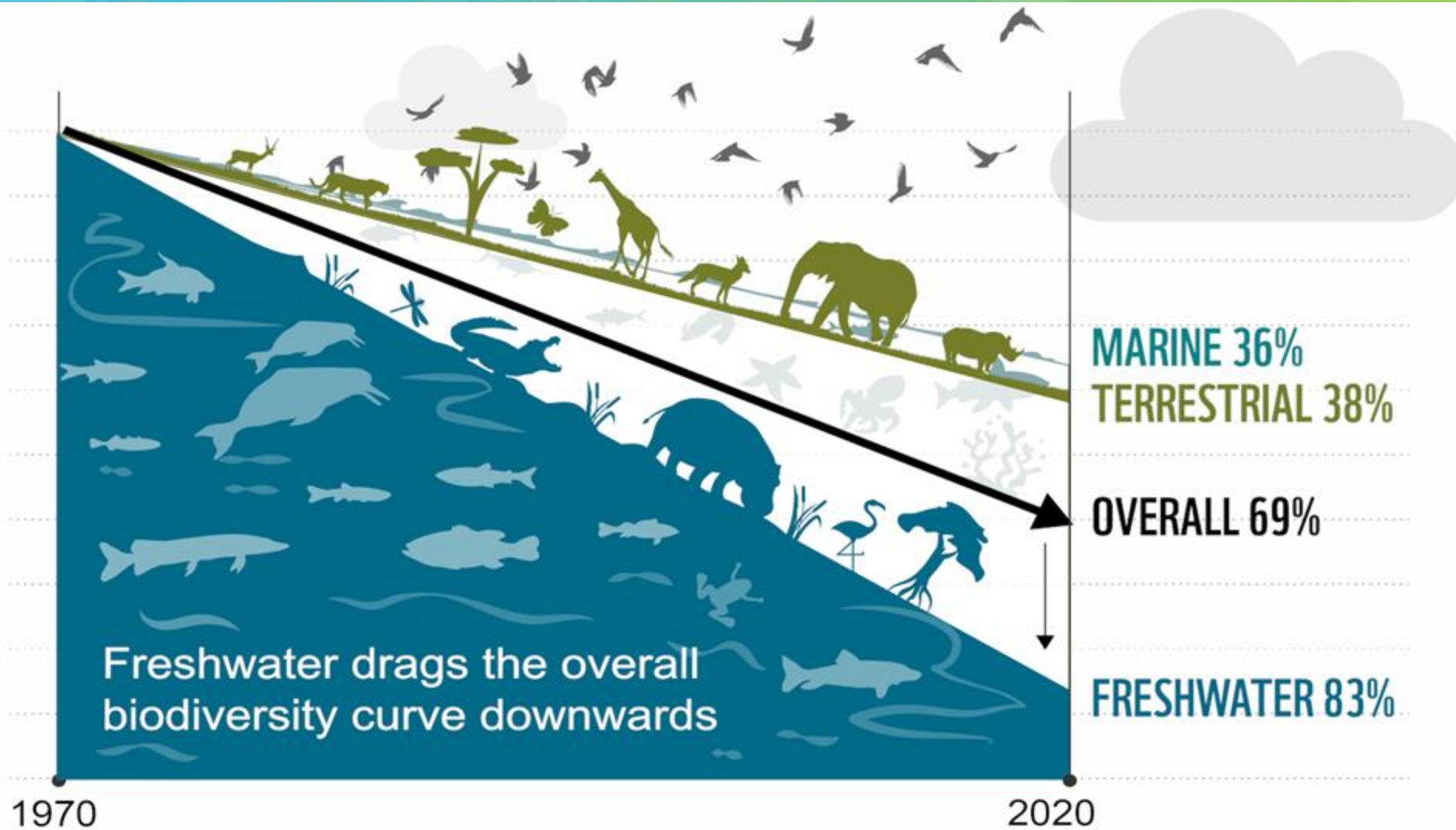
The screenshot shows the website for the CRC for Water Sensitive Cities. At the top left is a 'MENU' icon. In the center is the CRC logo and name. On the right is a search icon. The main content area features a circular diagram with 'Choose a topic' in the center, surrounded by segments for 'Essential services', 'Community engagement', 'Governance', 'Urban metabolism', 'Urban liveability', 'Environment', and 'Circular economy'. To the right of the diagram is the text 'SUSTAINABLE CITIES START HERE' with a play button icon, followed by the headline 'Realising the Vision of a Water Sensitive City'. At the bottom, there are navigation links for 'Resources', 'Tools', and 'Case Studies'.



For more information please visit [watersensitivecities.org.au](http://watersensitivecities.org.au)



# Global decline in biodiversity since 1970



Statistics from Living Planet Index: Freshwater & Overall (2020), Marine & Terrestrial (2012)

# TNC's Resilient Watersheds Strategy – 3 main Pillars



## **PILLAR 1** **Flagship Programs**

In biodiverse priority geographies, TNC and Partner-led watershed investment programs demonstrate watershed conservation with equitable community involvement



## **PILLAR 2** **Partnerships & Policy**

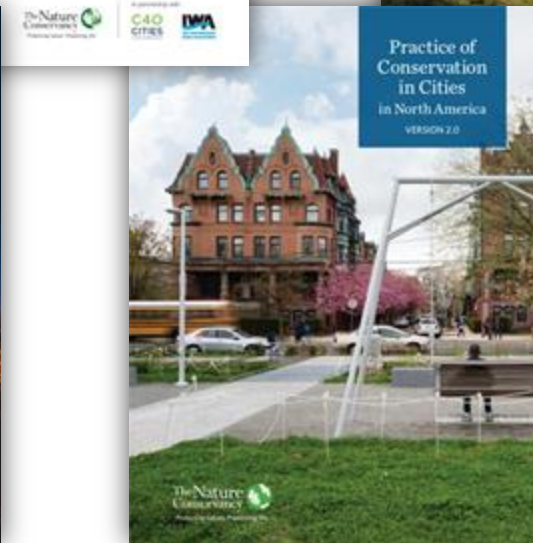
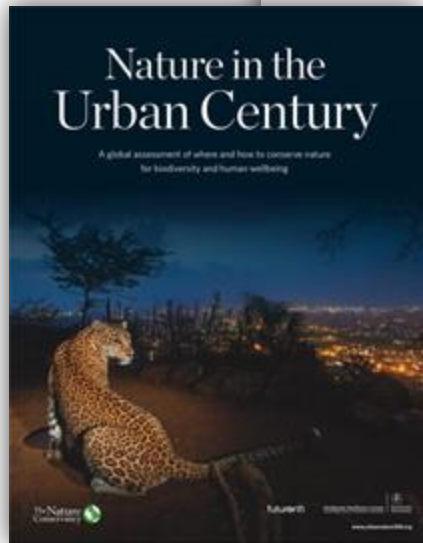
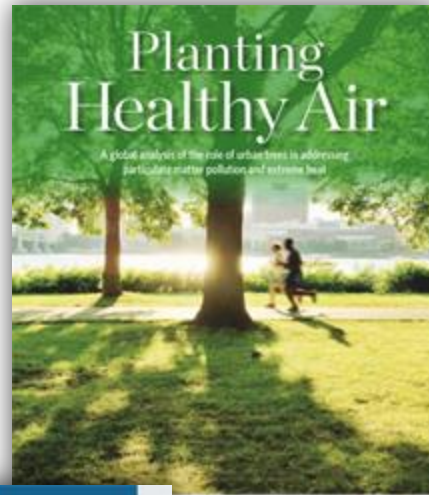
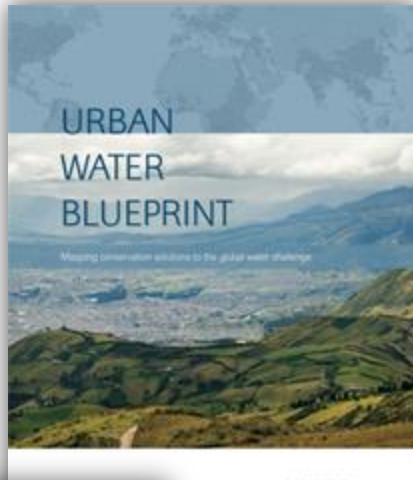
Across multiple geographies, key decision-makers, supported by our allies, create enabling conditions for watershed conservation



## **PILLAR 3** **Capacity Development**

Capacity grows to meet demand for watershed conservation through peer networks, tools, trainings and technical assistance (incl. via Nature for Water Facility)

# TNC Urban Conservation



## GLOBAL TNC CITIES WORK



## TNC U.S. CITIES NETWORK



# ADB – TNC partnership

- ADB and TNC have a long history of effective collaboration
- In April 2021, we signed a 5-year Letter of Intent; this was signed by Bambang Susantono, ADB's Vice President for Knowledge Management and Sustainable Development and Jennifer Morris, TNC's CEO.
- It outlines the following areas of collaboration:
  - Biodiversity and ecosystem protection and restoration (terrestrial, coastal and marine)
  - Nature based solutions and sustainable infrastructure
  - Coastal resilience
  - Finance for oceans, freshwater and biodiversity
  - Green and sustainable urban planning and development
  - Gender integration and poverty reduction in nature conservation
- TNC is also pleased to be a partner to the Nature Solutions Finance Hub





# Training objectives



Help understand what **nature-based solutions** are and how they can help address critical water security challenges such as water quality, floods or droughts whilst generating co-benefits for climate and biodiversity



Identify what **project teams need to do to prepare an NbS investment project** that can be implemented at scale, including governance and funding models



Help **project teams identify approaches and tools** to undertake a pre-feasibility or feasibility study for the NbS component of a project

# Training Agenda: Lecture Sessions

TIME	TUESDAY 17 <sup>th</sup> SEPTEMBER	WEDNESDAY 18 <sup>th</sup> SEPTEMBER	THURSDAY 19 <sup>th</sup> SEPTEMBER
9:00	<b>Welcome &amp; Introduction (30 min.)</b> <i>Review of training objectives and agenda</i>	<b>Welcome &amp; Review Day (15 min.)</b>	<b>Welcome &amp; Review Day (15 min.)</b>
9:15	<i>Participants introduce themselves</i>	<b>Case study – Cape Town (30 min.)</b> <i>Restoring the ecological infrastructure through invasive alien plant removal as a cost-effective and sustainable means of augmenting water for the Greater Cape Town Region.</i>	<b>Group Presentations Share-Out (1 hr. 15 min.)</b> <i>Highlights for each project case (10 min. per project)</i> <i>Identification of potential follow-up support</i>
9:30	<b>Nature based Solutions &amp; water security challenges across the rural to urban continuum 101 (1 hr.)</b> <i>Key concepts: Water Security challenges, Watershed health, Ecosystem services supporting people and nature</i>	<b>Case studies from the Resilient Urban Centres and Surrounds project (30 min.)</b> <i>Practical demonstration of the principles and tools introduced to a high density capital city (e.g. Bangkok) and regional urban centre (e.g. Phu Quoc, Viet Nam)</i>	
9:45	<i>NbS: Definitions and opportunities for climate resilient water security</i>	<b>Urban case studies – USA (30 min.)</b>	
10:00	<i>Examples</i>		
10:15			
10:30	<b>COFFEE BREAK (15 min.)</b>	<b>COFFEE BREAK (15 min.)</b>	<b>COFFEE BREAK (15 min.)</b>
10:45	<b>NbS in practice across urban and rural areas for climate resilient water management - Key considerations for implementing NbS at scale (1 hr. 15 min.)</b>		<b>ADB Manage Trust Funds (30 min.)</b>
11:00	<i>How to incorporate NbS into project preparation process</i>	<b>ROI Evaluation for NbS-WS (1 hr.)</b> <i>Building the business for case climate resilient NbS in an urban context</i>	<b>Next Steps &amp; Resources (30 min.)</b> <i>Links to resources, affiliate networks, ToRs, N4W Facility, other tools</i>
11:15	<i>Examples of several NbS programs which are or have the potential to be delivering activities at scale with multiple quantifiable benefits</i>	<i>Methodology &amp; Tools (e.g. WaterProof; Benefit-Cost analysis (INFEWS))</i>	
11:30	<i>Key things to get right; questions to ask for procurement of NbS services across urban and rural scales</i>	<i>Application to the case studies presented before</i>	
11:45			<b>Closing, Thank You &amp; Feedback Form (15 min.)</b>
12:00	<b>Office Hours (as relevant)</b>	<b>Office Hours (as relevant)</b>	
12:15	<i>Trainers from TNC and Monash are available to answer participants' questions (online or on-site)</i>	<i>Trainers from TNC and Monash are available to answer participants' questions (online or on-site)</i>	
12:30			
12:45			
13:00	<b>LUNCH BREAK (1 hr 30 min.)</b>	<b>LUNCH BREAK (1 hr 30 min.)</b>	
13:15			
13:30			
13:45			

# Training Agenda: Clinic Sessions

TIME	TUESDAY 17 <sup>th</sup> SEPTEMBER	WEDNESDAY 18 <sup>th</sup> SEPTEMBER	THURSDAY 19 <sup>th</sup> SEPTEMBER
14:00	<b>Clinic Session Plenary</b>	<b>Clinic sessions*</b> <i>1,5 hour per project</i>	
14:15	Introductions to projects and Small Action Plan templates		
14:30	<b>Clinic sessions*</b>		
14:45	<i>1 hour per project.</i>		
15:00			
15:15			
15:30	<b>BREAK (15 min.)</b>	<b>BREAK (15 min.)</b>	
15:45	<b>Clinic sessions*</b>	<b>Clinic sessions*</b> <i>1,5 hour per project</i>	
16:00	<i>1 hour per project</i>		
16:15			
16:30			
16:45	<b>DAY END</b>		
17:00			
17:15 +		<b>DAY END</b>	

# Who's in the room?

## Who's in the room

Go to

[www.menti.com](http://www.menti.com)

Enter the code

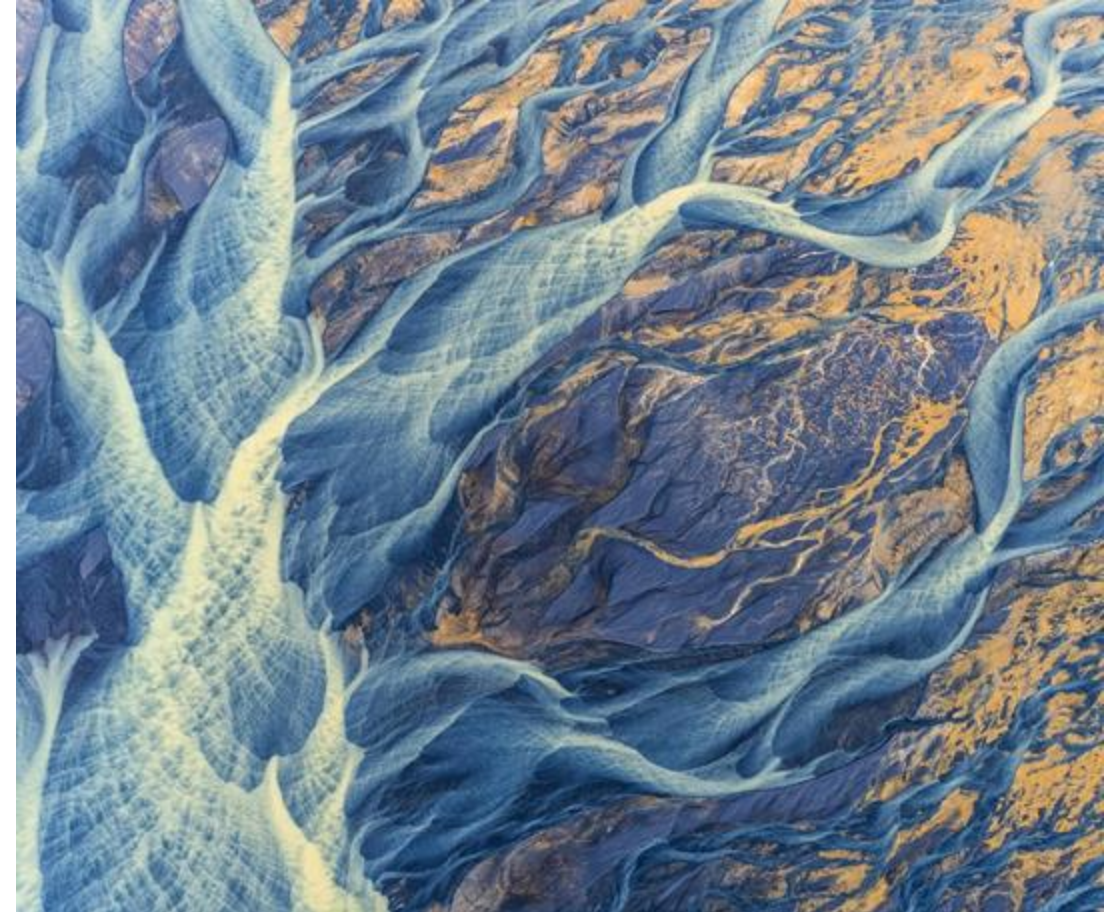
6913 6692



Or use QR code

# Zoom Rules of Engagement

- **We encourage questions + comments at any point** during the sessions
  - during presentations, please use the **'raise my hand' feature** for **clarification questions** during the presentation
  - or type into the **chat section** so that **we can address those in the Q&A**
- If something isn't working, **please let us know and we'll try to fix it!**



# Training follow-up

- Please provide feedback on your experience by completing a **feedback form** at the end of the training
- Teams that express interest will be eligible for **two person-days support from Nature for Water Facility staff** to help advance them advance their next steps
- Please **report back** on the projects that have benefitted from the training up after the course so that we can track down the impacts of the training



# THANK YOU

