



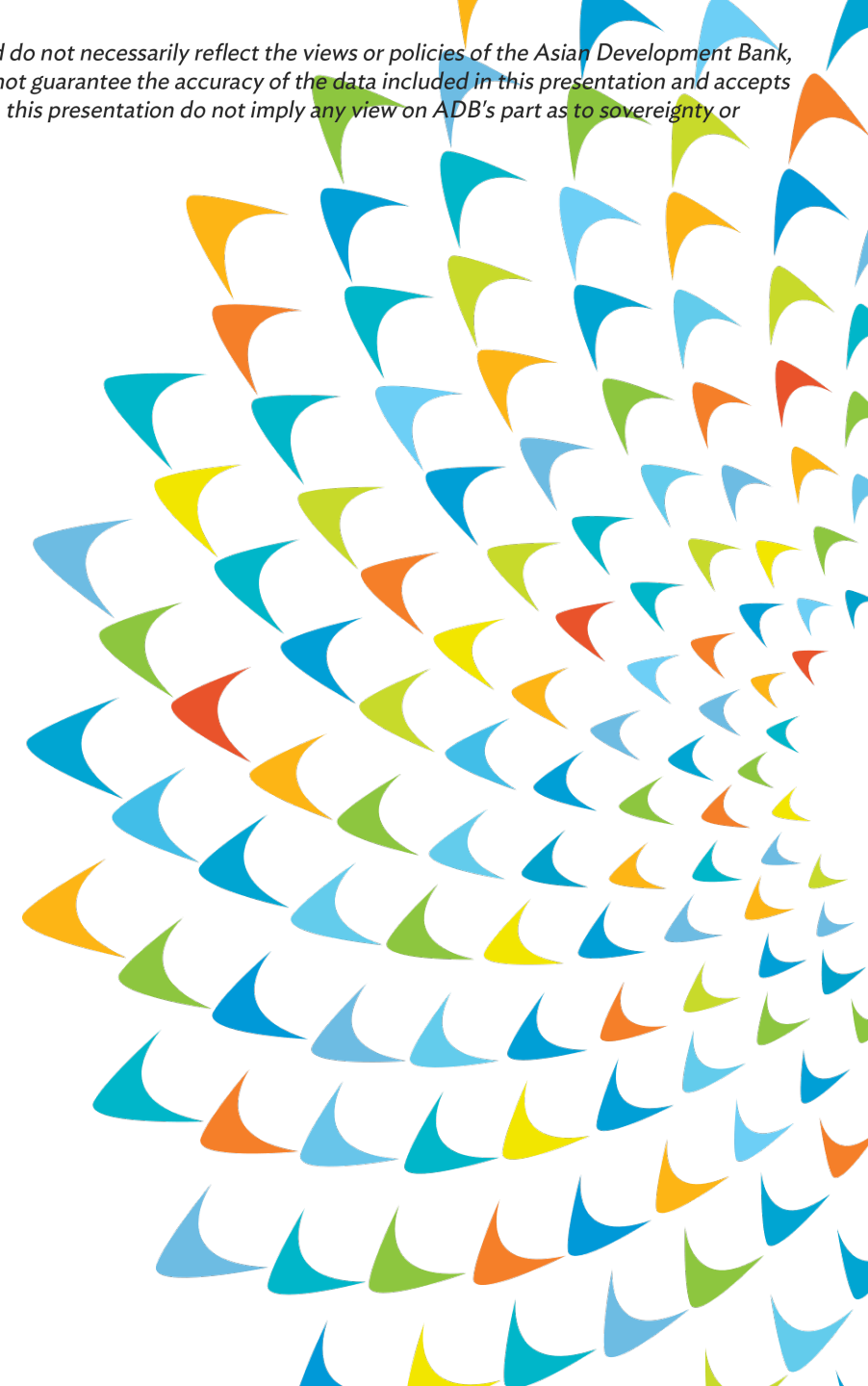
The views expressed in this presentation are the views of the author/s and do not necessarily reflect the views or policies of the Asian Development Bank, or its Board of Governors, or the governments they represent. ADB does not guarantee the accuracy of the data included in this presentation and accepts no responsibility for any consequence of their use. The countries listed in this presentation do not imply any view on ADB's part as to sovereignty or independent status or necessarily conform to ADB's terminology.

NCDs and Mental Health: Community-based LTC

Sharing regional experience

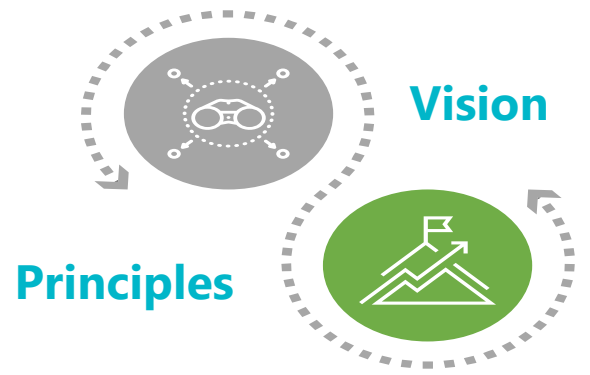
June 2024

Meredith Wyse Social Development Specialist – Aging and Care
Human and Social Development, Sectors Group, ADB
E-mail: mwyse@adb.org

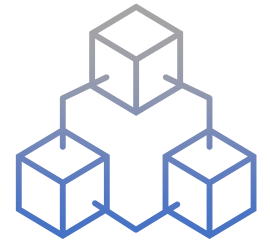




Background: A regional approach: Regional TA- *Strengthening DMC Capacity in Elderly Care (2016 – 2021)*



System Building blocks



- 1 Service delivery
- 2 Financing
- 3 Human resources
- 4 Quality management
- 5 Collaboration and partnership



From planning to practice: Regional TA- Developing Innovative Community-based LTC Systems and Services (2019-25)

Objective: To develop affordable, effective, sustainable models to provide quality community-based care



Community-based LTC pilots

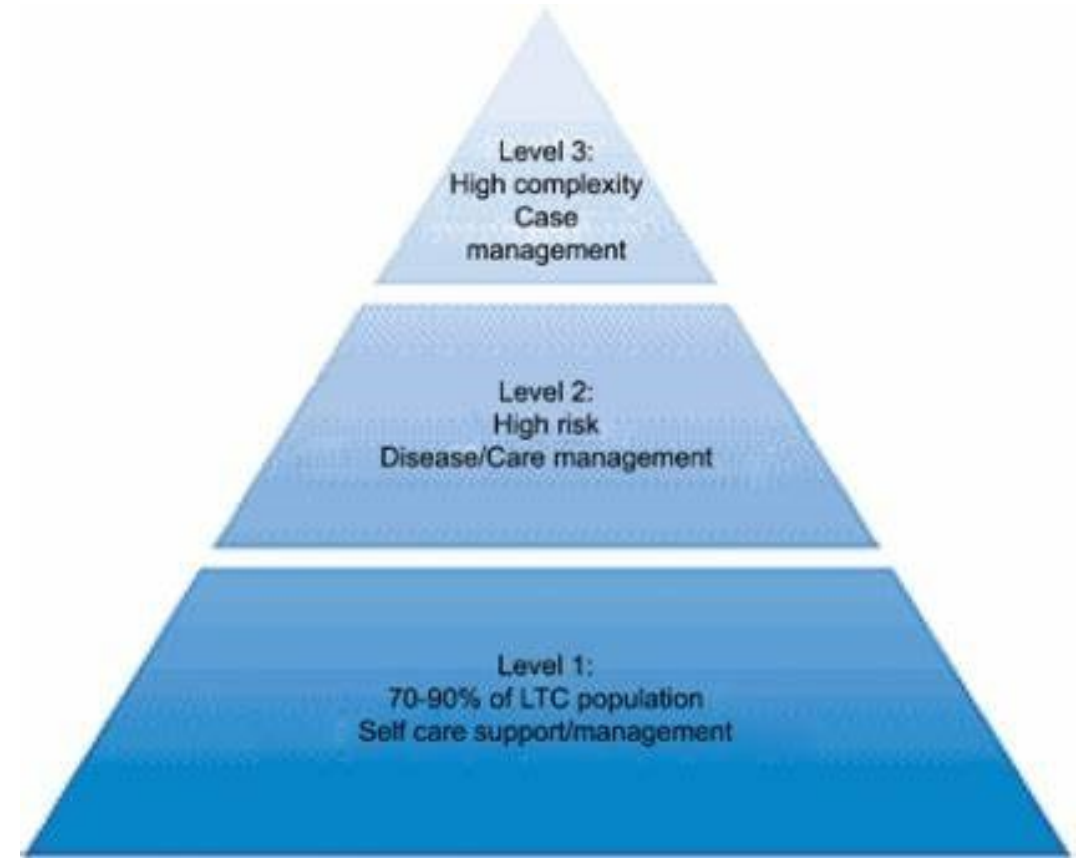
- 1 Service delivery
- 2 Case management
- 3 Human resources development
- 4 Local and national governance
- 5 Informing replication at national level



Common principles

Core principles

1. Person centered
2. Biopsychosocial approach
3. Based on standardized screening for risks and comprehensive needs assessment, and agreed care plan
4. Coordination
5. Mobilization of resources





Core services

- 1. Information and referrals**
- 2. Care and support**
- 3. Active aging programs**
- 4. Case management**



Mongolia

Development of Active Aging Hubs with different types of service providers: NGO care provider, Elderly Development Center, and General Hospital



Coordination



Proactive outreach to most vulnerable



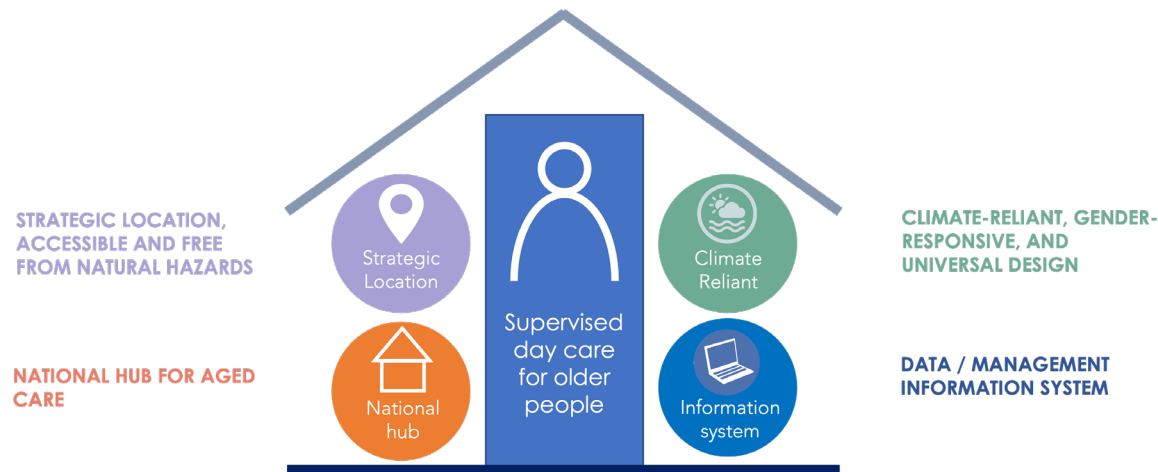
Coordination and governance

Care coordinating committees at commune and district level, led by People's Committee



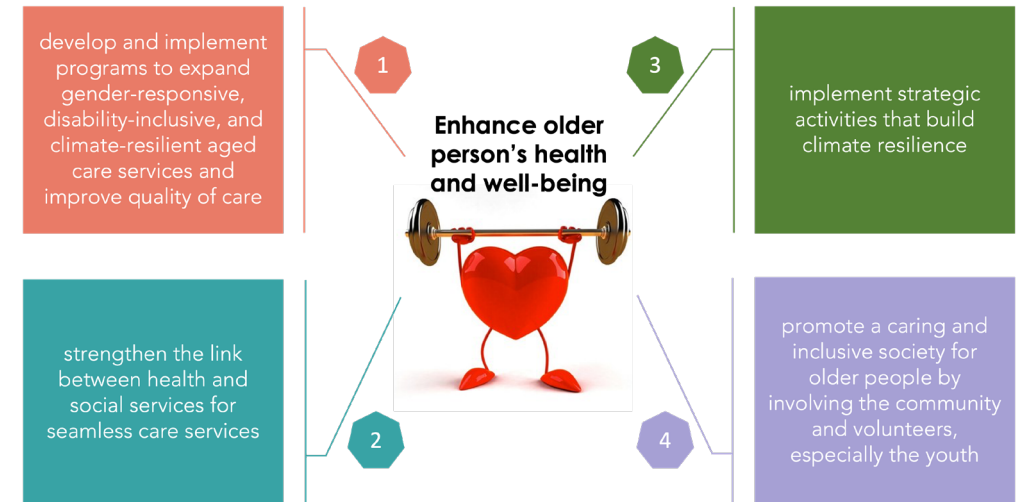
Portfolio development: Tonga's Integrated Aged Care Project

Output 1: Four community care centers established



- Supervised day care for older people, short-term respite care, venues for other aged care services such as community-based wellness promotion programs

Output 2: Aged Care Services and Programs Implemented





Output 3: Caregiver support and measures implemented to recognize, reduce and redistribute care



CAREGIVER ALLOWANCE (CA)



GERIATRIC AND CAREGIVER COUNSELLING SERVICES



CAREGIVER TRAINING CERTIFICATE LEVEL 1 - 2



HOME MODIFICATION ASSISTANCE



ANCILLARY SUPPLIES SUPPORT



GENDER EQUITY AWARENESS PROGRAM





Appendix: Knowledge products



For free downloads and access to ADB knowledge products, reports, data and information please visit the following sites:
<https://www.adb.org/what-we-do/themes/social-development/overview/aging>
Linked in/ Twitter: Adapting to Aging Asia