

The views expressed in this material are the views of the author/s and do not necessarily reflect the views or policies of the Asian Development Bank, or its Board of Governors, or the governments they represent. ADB does not guarantee the accuracy of the data included in this presentation and accepts no responsibility for any consequence of their use. The countries listed in this presentation do not imply any view on ADB's part as to sovereignty or independent status or necessarily conform to ADB's terminology.

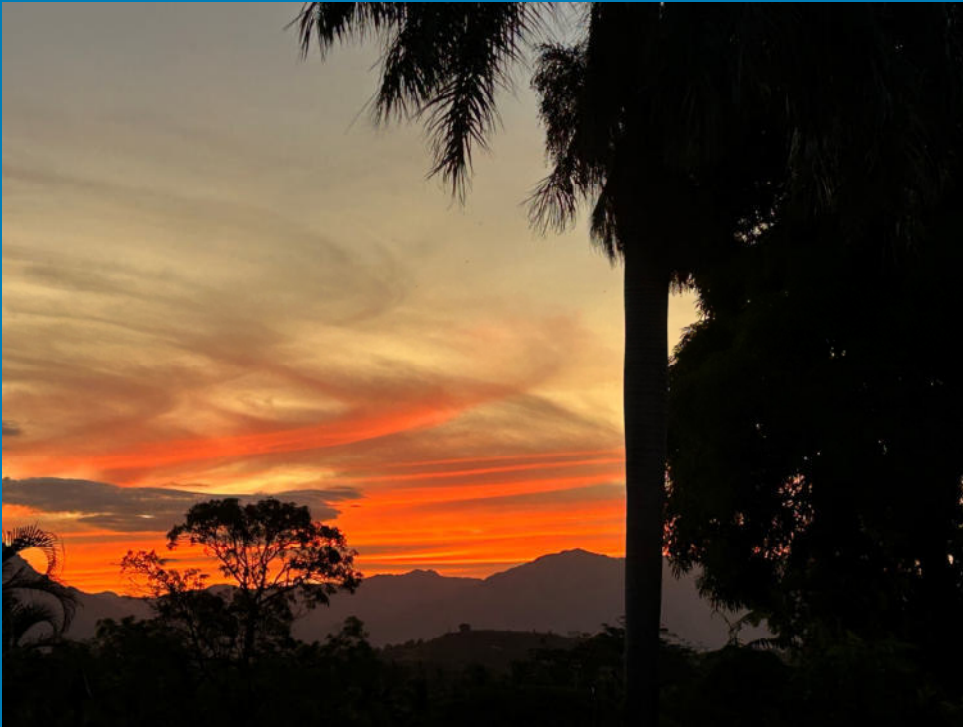
ADB Health, Safety and Security (HSS)

Awareness Training Course



ADB

staff. It may be shared outside ADB with appropriate permission.



HSS WORKSHOP FOCUS:



- **ADB - HSS**
- **Safety Culture**
- **Hazard Identification**
- **Life Saving Rules**
- **Risk Management**
- **HSS Good Practice Guide**
- **Safe Work Practices**
- **Incident Reporting & Investigation**
- **Emergency Preparedness**

**Fiji,
10–13 June 2024**


ADB



UXO Unexploded Ordnance

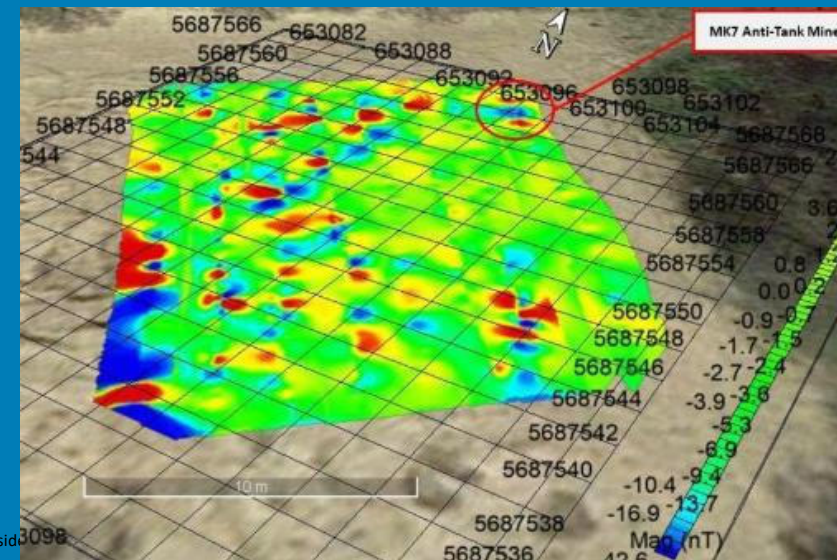
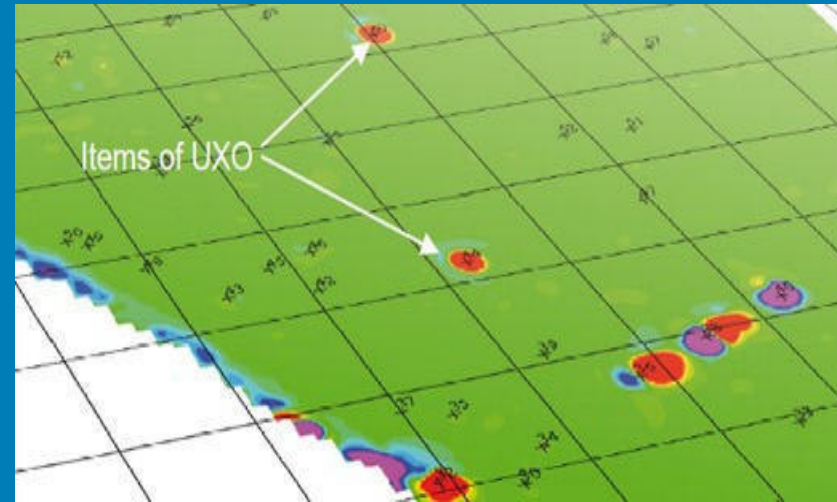


Key Risk Assessment considerations:

- Known UXO
 - Suspected UXO
 - Chance UXO Finds
 - Blasting Caps Armed vs Unarmed
 - All have high risk
 - Survey Technologies
 - Mitigation, Removal & Disposal
- 

UXO Survey Methodologies:

- Historical Research
- Ground Penetrating Radar (GPR)
- Electromagnetic Induction (EMI)
- Magnetometers
- Seismic – Acoustic Surveys (various)
- Advanced Imaging (various)
- Chemical Signature Detection
- **Preferred:**
 - Autonomous Vehicle Mounted
 - Multi-sensor Units
 - Multiple Survey Passes




Most Importantly with UXO:

- Careful Planning & Risk Management



		Consequence		
		Slightly Harmful	Harmful	Extremely Harmful
Likelihood	Likely	Medium Risk	High Risk	Extreme Risk
	Unlikely	Low Risk	Medium Risk	High Risk
	Highly Unlikely	Negligible Risk	Low Risk	Medium Risk



MODULE 7
**Emergency
Preparedness
and
Response**

Understand the best practices involved in emergency management.

Emergency Classification Level 1- Minor

Any unplanned HSS incident that can be managed with **on-site resources**.



Emergency Classification Level 2 - Severe



Any uncontrolled HSS event that is **contained on-site but requires external assistance** and has the potential to escalate...

ADB

Emergency Classification Level 3 – Major/Extreme

This is an uncontrolled crisis-level event that has **serious effects beyond the site, and requires external resources** typically utilized in a large-scale emergency.



Incident Command System - ICS

Internationally recognized “ICS”

- Standardized roles
- Common terminology
- Scalable up or down...



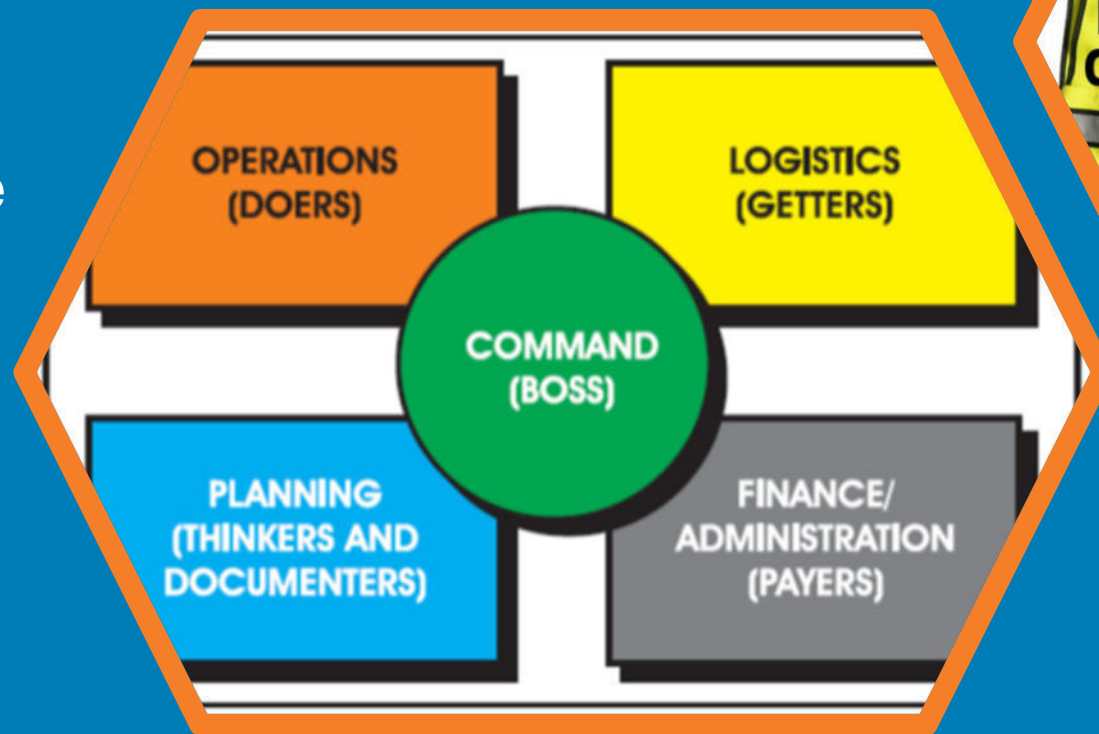
“Reacting” to an emergency without ICS...

- Lacks accountability
- Has poor communication
- Unsystematic planning
- Unable to efficiently integrate responders
- “Un-even” Playing Field !

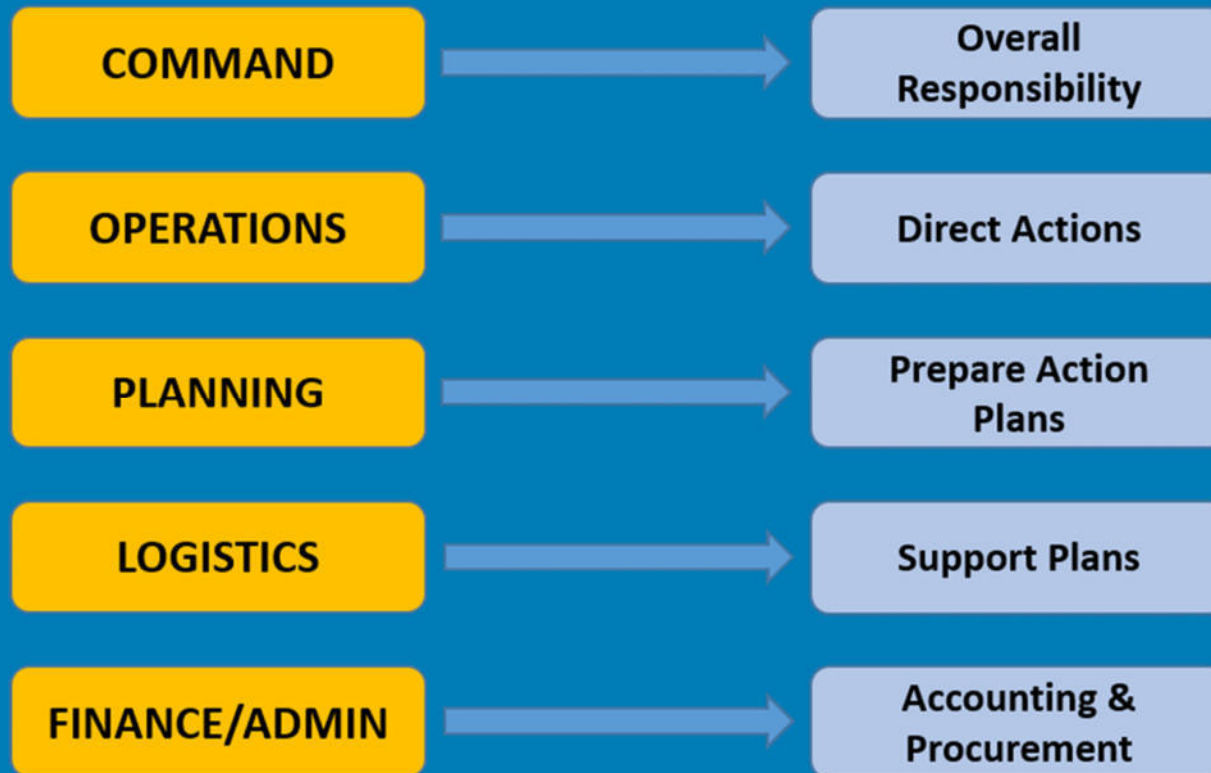


“Responding” to an emergency with ICS ensures:

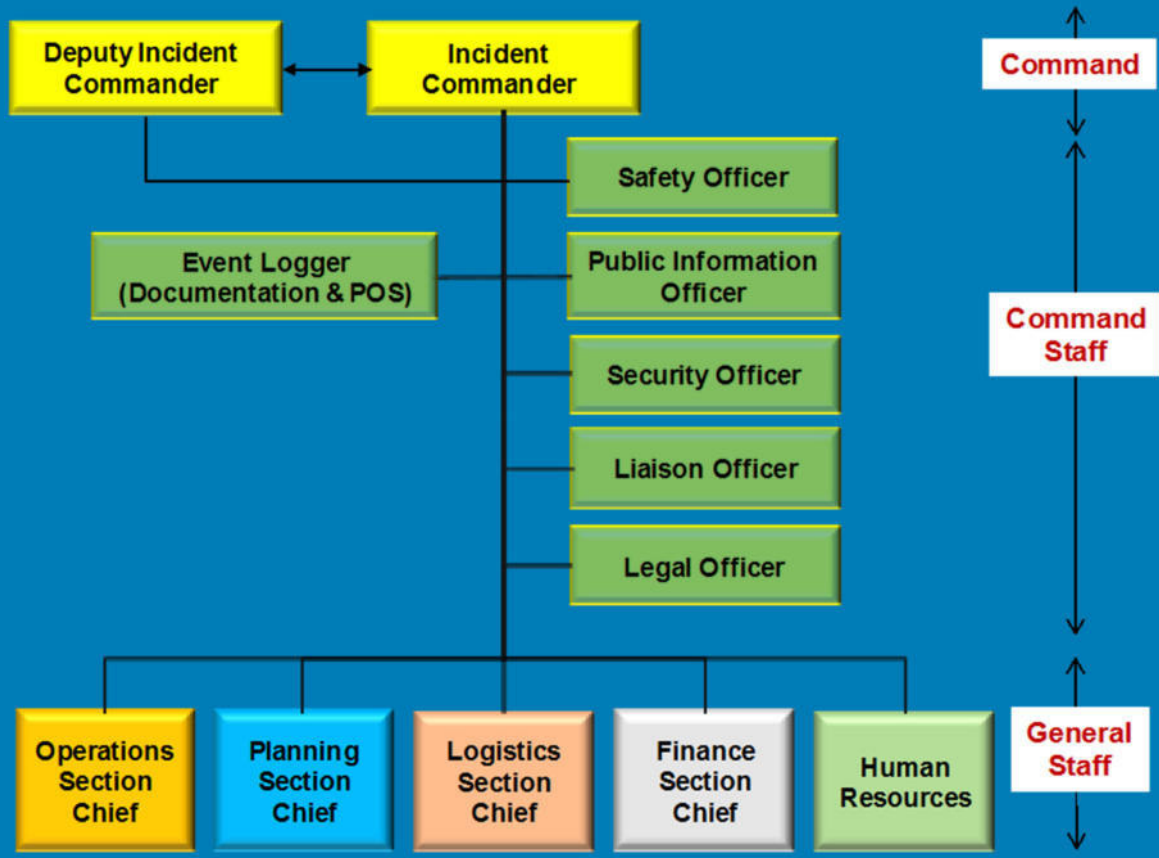
- safety of responders, workers, and the public
- efficient use of resources



ICS core positions ...



ICS is Scalable ...



INTERNAL. This information is accessible to ADB Management and staff. It may be shared outside ADB with appropriate permission.

ICS core roles...

Function	Description
Incident Command	<ul style="list-style-type: none">• Establishes incident objectives, strategies, and priorities.• Assume overall responsibility for the incident.
Operations	<ul style="list-style-type: none">• Determines tactics and resources for achieving objectives.• Directs the tactical response.
Planning	<ul style="list-style-type: none">• Collects and analyzes information.• Provides engineering and technical support.
Logistics	<ul style="list-style-type: none">• Provides resources and needed services.• Tracks resources.
Finance/ Administration	<ul style="list-style-type: none">• Accounts for expenditures, claims, and compensation.• Procures needed resources.
Event Logger	<ul style="list-style-type: none">• Collects information including # of persons on scene.• Maintains documentation.• <i>All personnel shall maintain a log of events.</i>



Emergency Response Plans

What are the basic elements of an emergency response plan?

Communication and ERP Activation are critical components of the emergency response.



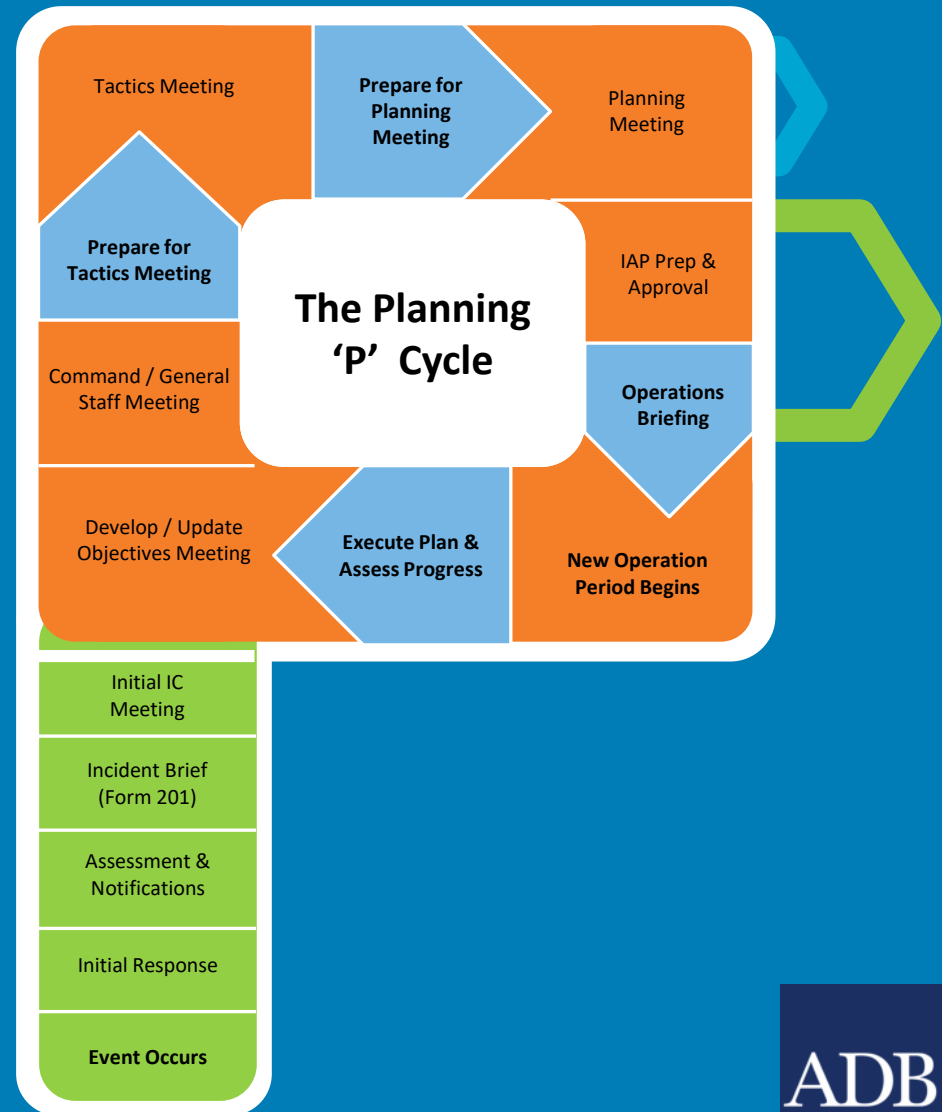
ADB

Emergency Response Plans



Ongoing Response

Initial Phase





Exercise



Effective Communication...
Follow your Supervisor's
instructions as best you can !!!

Placemats for Response Personnel

Incident Management Team (IMT) Emergency Response Placemat	
Title / Role	Division / Location
Incident Commander	Corporate / Head Office (Calgary)
Reporting	Notifications / Communications
Reports to: <ul style="list-style-type: none"> Crisis Management Team Leader Minimum Direct Reports: <ul style="list-style-type: none"> Operations Section Chief Planning Section Chief Logistics Section Chief Finance & Admin Section Chief Additional Direct Reports: <ul style="list-style-type: none"> Crisis Advisor Human Resources Advisor Legal Advisor EHS Officer Liaison Officer Information Officer 	Internal: <ul style="list-style-type: none"> Emergency Management Support Team (EMST) through the EMST Director Incident Management Team (mobilize) Internal response resources Available off-duty personnel Others as required External: <ul style="list-style-type: none"> Mutual aid partners and third-party response contractors Alberta Energy Regulator (AER) Health Authority OH&S/WCB Ministry of Environment
ICS Form Requirements	
<ul style="list-style-type: none"> Section 7.1.1 ICS 201 – Incident Briefing (Initial Incident Commander) Section 7.1.2 ICS 202 – Incident Objectives Section 7.1.3 ICS 203 – Organization Assignment List Section 7.1.12 ICS 214 – Activity Log 	

Role Overview
<p>The IMT Incident Commander (IC) is the overall Person-in-Charge of the emergency response for all Level 1, 2 & 3 classified emergencies occurring at any AltaGas sites and facilities.</p> <ul style="list-style-type: none"> Assesses the situation and/or obtain a briefing from the prior Incident Commander Determine Incident objectives and strategy Establish the immediate priorities Establish an Incident Command Post Establish ICS organization needed to manage the incident Approve and authorize the implementation of an Incident Action Plan Coordinate activity for all Command and General Staff Coordinate with key people and officials Approve requests for additional resources or for the release of resources Keep agency administrator informed of incident status Order the demobilization of the incident when appropriate Authorize information release to the media
Initial Actions
<p>Confirm the Level of Emergency and Immediate Response Requirements</p> <ul style="list-style-type: none"> Obtain incident briefing from Operations Section Chief or Site Control Room <ul style="list-style-type: none"> If first point of contact regarding an emergency, try to establish communications with the person who reported the emergency and complete the Section 2.3 Initial Communication With The AER If the BST has not been activated and you are the first point of contact for the BST, notify and activate the Operations Section Chief and establish the EOC. Confirm the Emergency Level and communicate the Emergency Level to all responders. Gather details of the incident/emergency and evaluate the severity of the situation. Confirm the size and location of the response zones. Reference: <ul style="list-style-type: none"> Section 6.4 Emergency Planning Zones, Section 4.1 Isolation And Monitoring, and Section 4.2 Evacuation And Sheltering Determine the initial prioritized objectives for response. <ul style="list-style-type: none"> This will determine how resources are administered. Public safety and the environment must always be the primary concern.




INTERNAL. This information is accessible to ADB Management and staff. It may be shared outside ADB with appropriate permission.

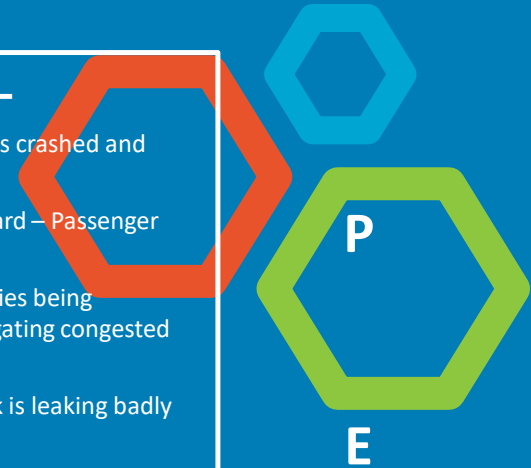


ACTIVITY
**Emergency
Preparedness
Case Study**



GROUP EXERCISE - Sample Emergency Operations Center Board

UPDATE		LOCATION	Halifax Harbour Bridge	TIME	INCIDENT EVENT LOG	
DATE: Simulation		Sketches: 			1330	<ul style="list-style-type: none"> Ops receives call from Security – fuel tanker truck has crashed and exploded on MacDonalld Bridge
TIME: 1500 hrs					1335	<ul style="list-style-type: none"> HHB Security On-scene: Truck had two people onboard – Passenger Critically Injured, Driver MIA
Notifications:	DONE	 			1345	<ul style="list-style-type: none"> Several other vehicles were damaged, no other injuries being reported, but First Responders having difficulty navigating congested traffic on bridge
911	✓				1400	<ul style="list-style-type: none"> Fire Department On-scene – Fire is out but fuel truck is leaking badly and overflowing into the water
Ambulance	✓				1415	<ul style="list-style-type: none"> Ambulance has injured passenger under care, Truck Driver found deceased.
Fire Dept.	✓				1430	<ul style="list-style-type: none"> Call to HHB CEO from Develop Nova Scotia Halifax Waterfront reporting large oil sheen at boardwalk, absorbent boom and pads have been deployed.
HPD, HPA	✓				1445	<ul style="list-style-type: none"> HHB Security reports that the truck had impacted the bridge riser structure causing significant damage to the bridge infrastructure.
HHB Mgt & BoD	✓				1500	<ul style="list-style-type: none"> Facebook Post and Twitter are reporting a terrorist attack is underway on the MacDonalld Bridge, MacKay Bridge is the next likely target...
HRM	✓					
Halifax Transit	✓					
Waterfront DNS	✓					
DFO/CCG/EC	✓					
JRCC	✓					
Media	TBC					
Wind: 15 kts NW	PERSONS ON SCENE			RISK ACTION PLANNING	RESOURCES NEEDED	
Tide: Ebbing	NUMBER	LOCATION	MISSING	<ul style="list-style-type: none"> Emergency Services Security & Traffic Control Spill Contingency & Notices Legal Advice, NoK, Media ? Board of Directors Advice 	<ul style="list-style-type: none"> Medical Traffic Control Fire Fighting Spill Equipment Engineering Media Liaison 	
Forecast: Stable	1	Truck	1			
	2	HHB	0			
	?	Public	?			



P

E

A

R



Summary

- incident command systems structure an emergency response
- emergency preparedness protects workers, communities, and the environment
- project risk assessments should include the hierarchy of controls





“The **lowest** level of safety a **Supervisor** shows ... is the **highest** level you can expect from your **workforce**.”

They expect you to
come home safely.

Don't disappoint them.





Course Assessment

