



Pacific Region
Infrastructure Facility

Regional Infrastructure Technical Assistance

Robert Guild, PRIF Team Leader

23 May 2024

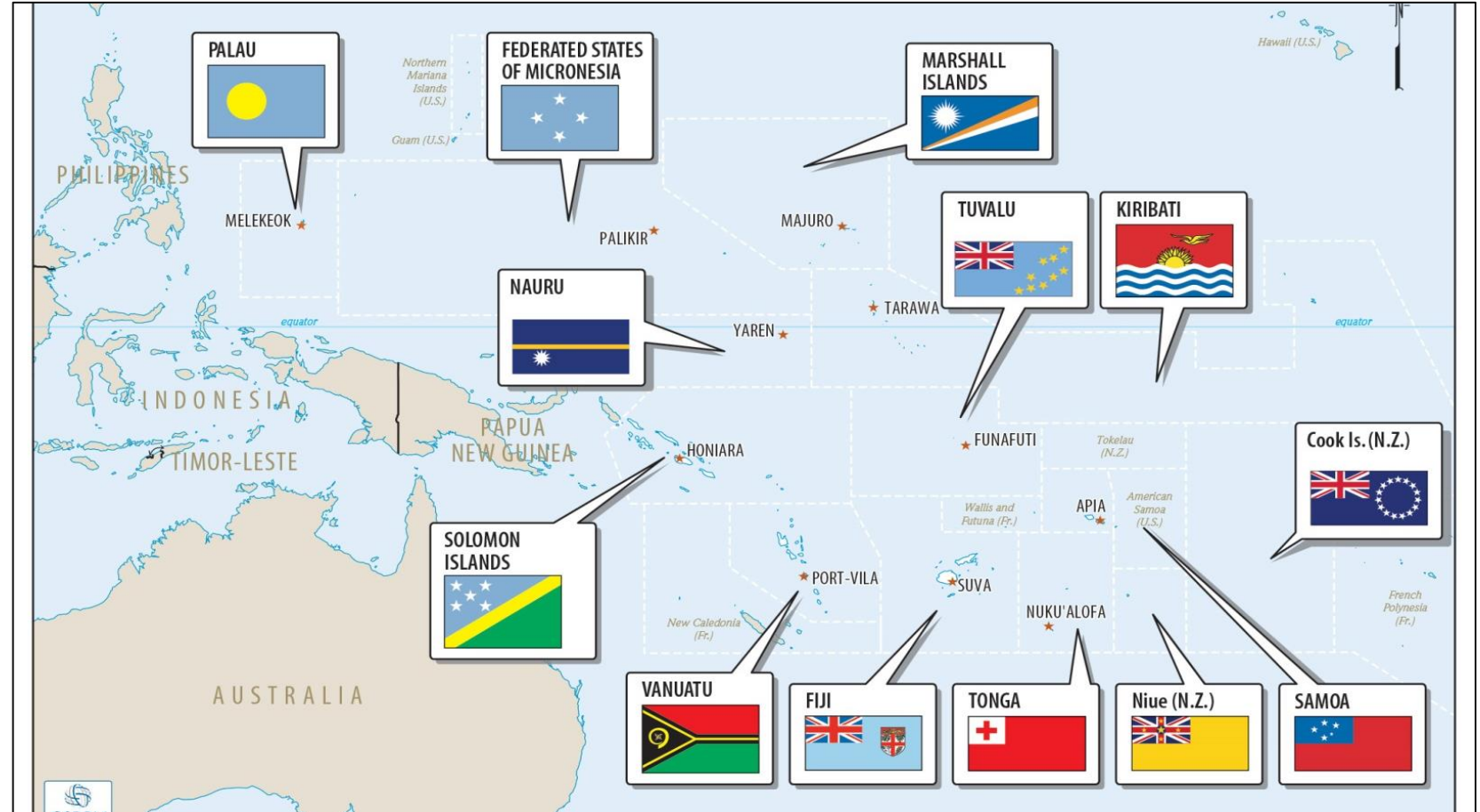
Pacific Region Infrastructure Facility



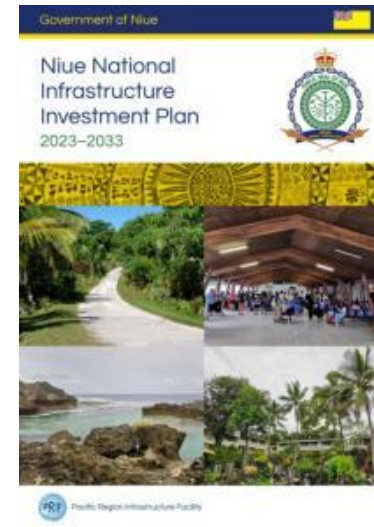
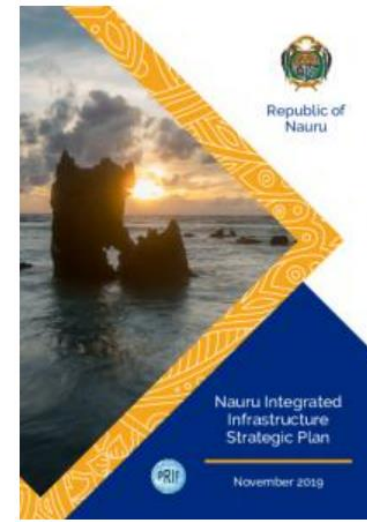
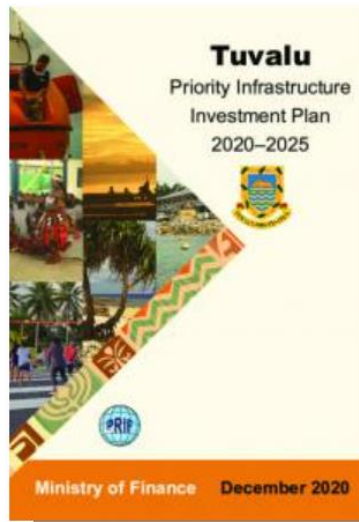
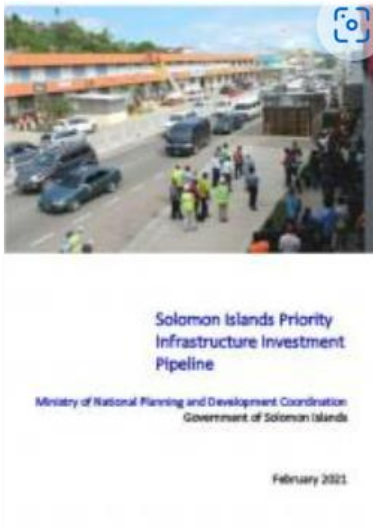
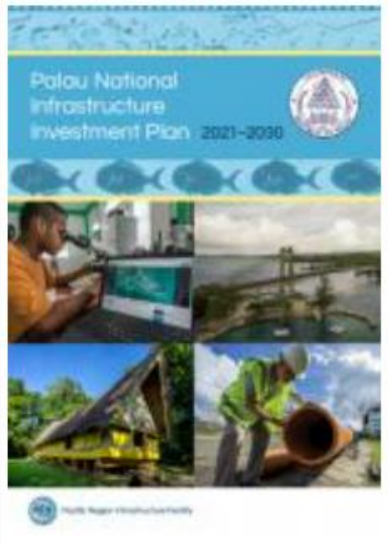
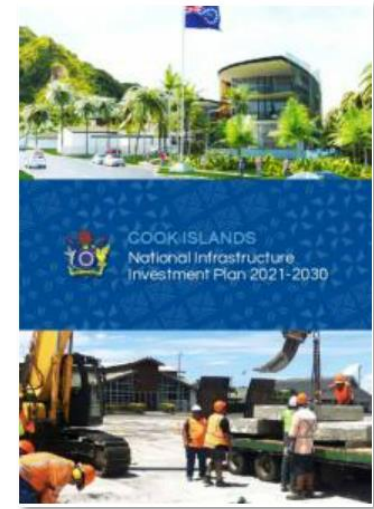
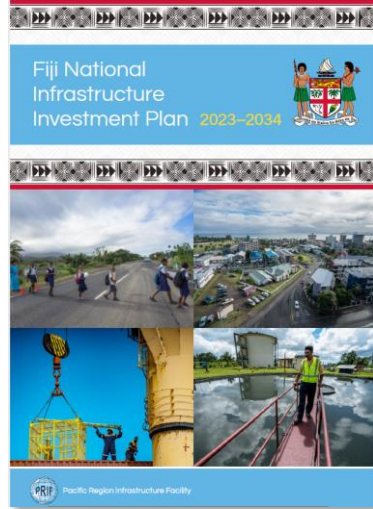
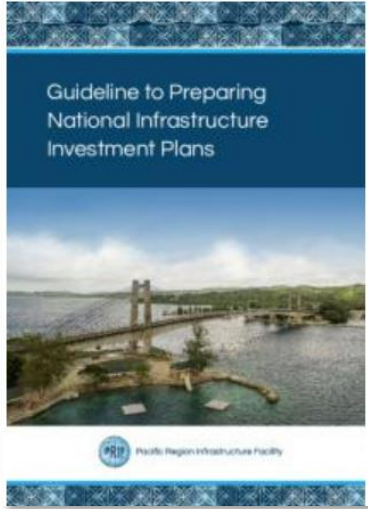
PRIF is a coordination and technical assistance facility that aims to improve the delivery of quality and climate-resilient infrastructure and services to support socio-economic development in PIF member countries.

Established in Sydney 2008

Relocating to Suva 2024



National Infrastructure Investment Plans



Recent Publications

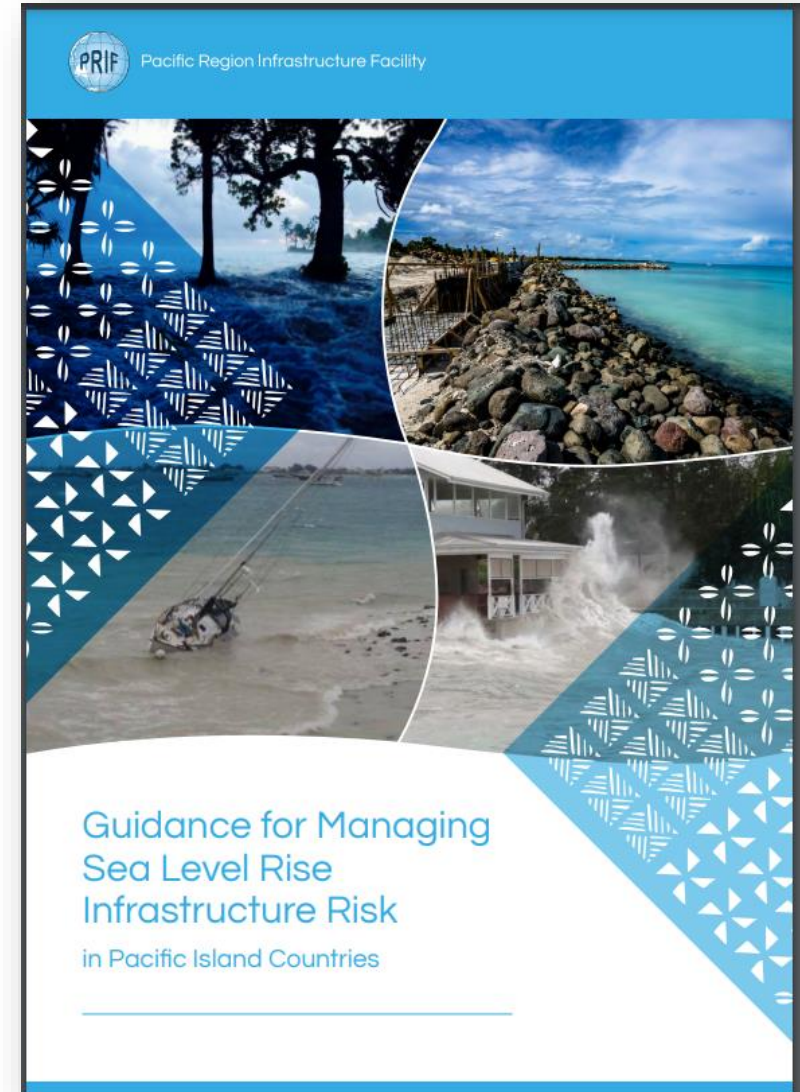
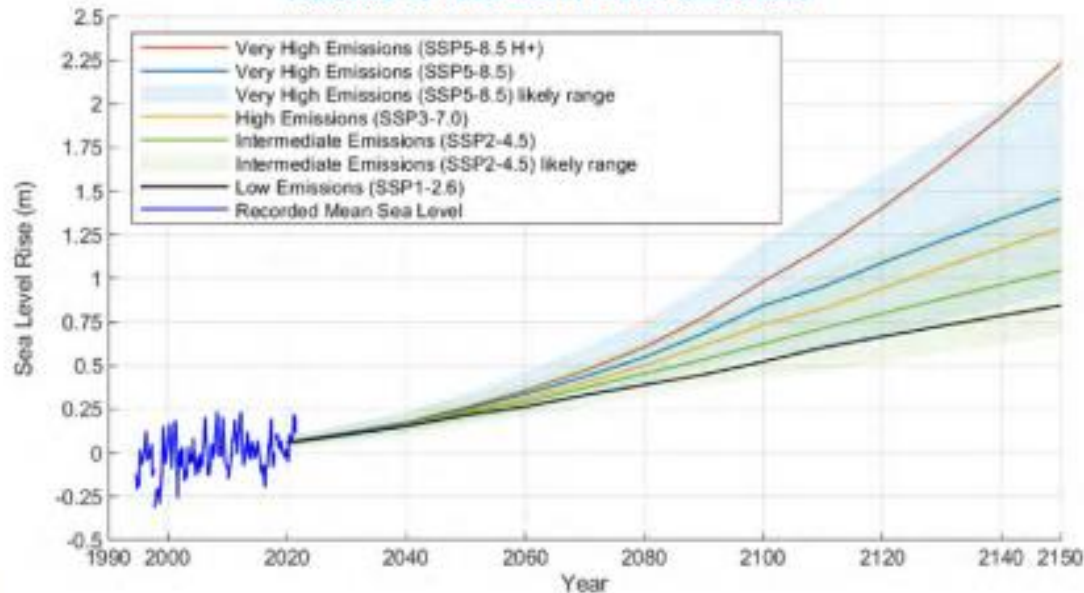
1. Benchmarking Infrastructure Maintenance in Pacific Island Countries
2. Updating of the Post-COVID-19 Pacific Short-term Aviation Strategy 2022
3. Guidance for Managing Sea Level Rise Infrastructure Risk in Pacific Island countries
4. Study on Pacific Clean Energy Financing Potential
5. Inclusive Infrastructure in the Pacific: Study on Gender Equality and Social Inclusion
6. Shared Approach for Management of Environmental and Social Risks and Impacts in Pacific Island Countries
7. Enhancing Procurement Practice and Local Content in Pacific Infrastructure
8. Diagnostics of Pacific Water and Wastewater Association Water Utilities with country profiles for Fiji, Palau, Samoa and Solomon Islands
9. Regional Recycling Network Pre-feasibility Assessment
10. Stocktake of Fossil Fuel subsidies in the Pacific
11. Improving National Building Codes and Standards in the Pacific: Coordination and Harmonization Report
12. Responsible sourcing of aggregates in the Pacific



Guidance for Managing Sea Level Rise Infrastructure Risk in Pacific Island countries

Explains the infrastructure risks associated with climate change induced sea level rise and offers practical guidance on how plan through the concept of dynamic adaptive pathways.

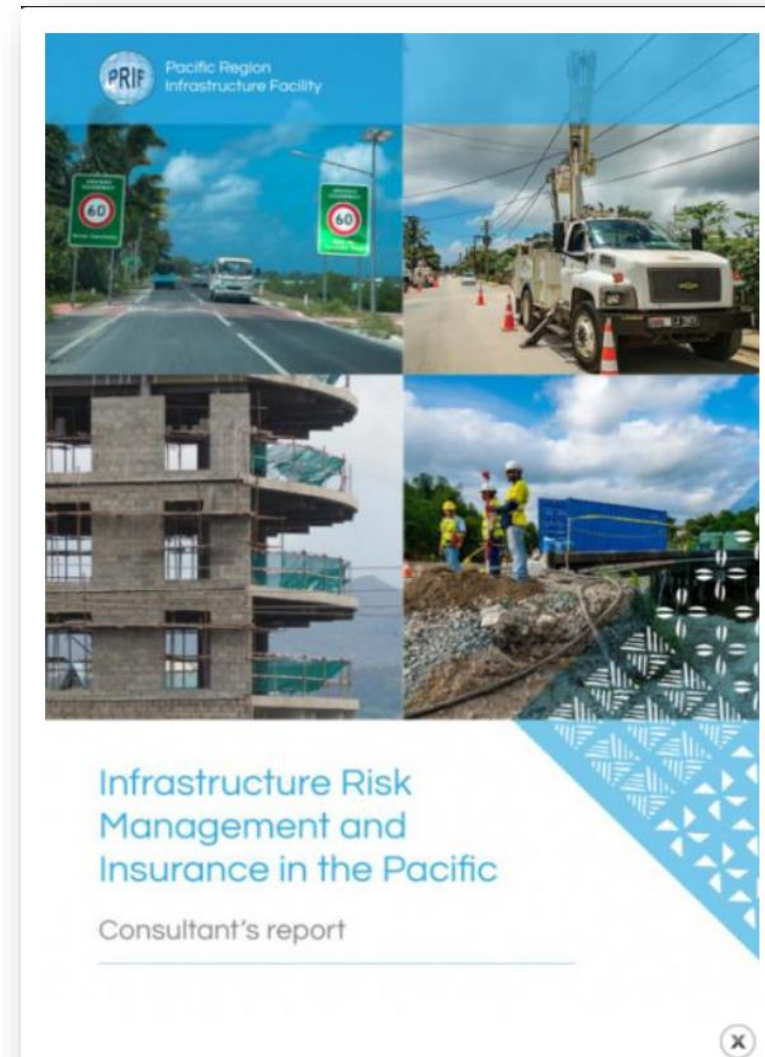
Figure 3.15: Sea Level Rise Projections to 2150 for the Solomon Islands Relative to 1995–2014 Mean Sea Level



Infrastructure risk management and insurance in the Pacific

Recommendations to improve the cost-effective management of infrastructure project lifecycle risks in the Pacific including:

- (i) involving the insurance industry early in infrastructure project design and preparation (risk management and risk transfer aspects), to take advantage of their expertise in risk management,
- (ii) risk pooling to diversify risks,
- (iii) creating a facility backed by a consortium of the insurance industry (including brokers, insurers and reinsurers) to offer adequate risk management services and coverage from project design, construction, operation and maintenance phase across the region to bring down the cost of insurance and avoid protection overlaps and gaps, and
- (iv) the potential to expand the scope of the Pacific Catastrophe Risk Insurance Company (PCRIC).



Responsible sourcing of aggregates in the Pacific

Support the identification and transition to sustainable and resilient sources of quality, cost effective aggregates for the infrastructure sector.

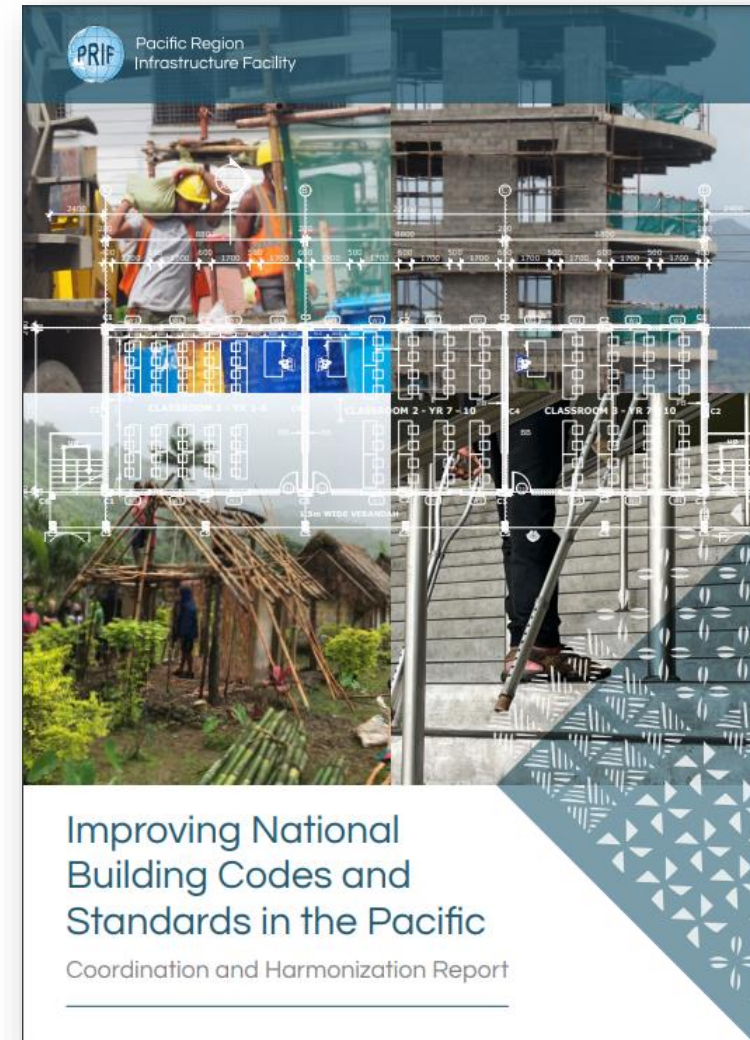
- Country profiles of 14 PICs
 - Diverse regulatory, policy and institutional landscapes
 - Aggregate self sufficiency
- Market and supply chain analysis
 - Fiji's importance as a regional supplier
 - The role of suppliers from outside the region
 - Transportation and logistics
 - Aggregate costs
 - Quality considerations
 - Potential alternative sources within the region
- Environmental, social, OHS and economic aspects
 - Environmental and social impacts and management
 - Good practice principles for responsible resource extraction



*Report is not yet published, editing ongoing

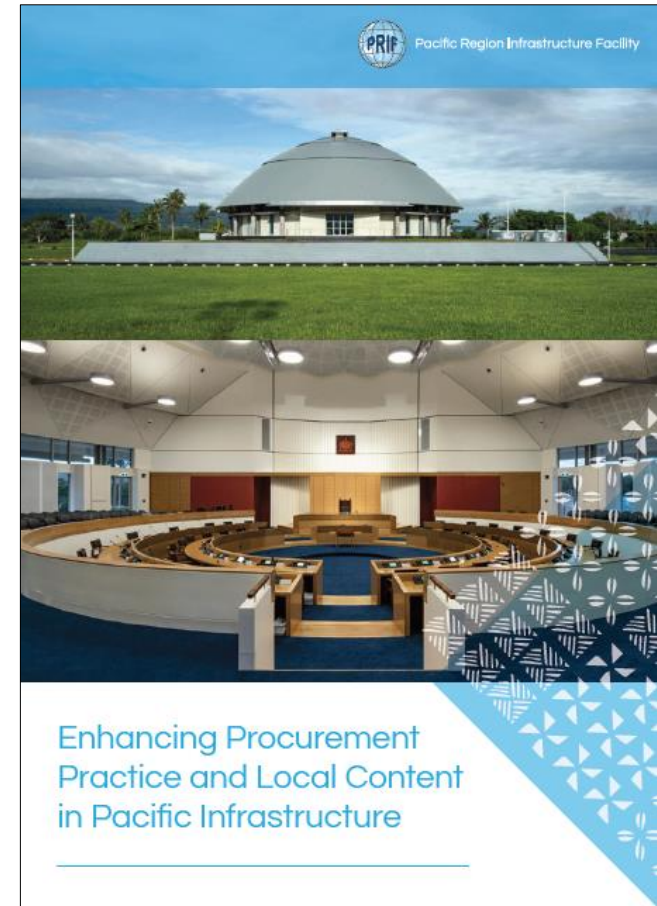
Improving National Building Codes and Standards in the Pacific

- Includes stock take of initiatives to improve Building Codes across the region, informed by interviews with PIC authorities, to highlight opportunities to leverage good practices and lessons learned.
- Provides short-, medium-, and long-term national & regional recommendations to reinforce & improve building construction legislation, regulations, codes and standards across the Pacific
- Includes key recommendation for supporting regional coordination and harmonization including:
 - Ease of doing business
 - Easing access to insurances
 - Greater efficiencies benefitting from regional hazard studies
 - Facilitating regional training and qualifications



Enhancing Procurement Practice and Local Content in Pacific Infrastructure

- Examines the benefits, costs and opportunities of local content
- Identifies a raft of good practice examples from across the region including:
 - skills development (Solomon Islands)
 - early contractor involvement (Tonga)
 - Results-based lending (Solomon Islands)
 - Implementation of a local content policy (FRA, Fiji)
- Identifies opportunities for improving procurement practices to facilitate optimal local content - for governments, development partners & the private sector
- Includes checklist for incorporation of local content



Upcoming TA and Knowledge Work

Strategic areas

- National infrastructure investment planning
- Renewable energy transition
- Improving national building codes
- Improving aviation
- Improving maritime transport
- Improving ICT connectivity and resilience
- Building capacity for asset management
- Promoting private sector participation

New priorities in Phase V:

- Support climate resilience, DRR, and DRM
- Mainstream gender equality, disability, and social inclusion
- Shared approach to the prevention of sexual exploitation, abuse, and harassment



Working Groups



Transport Sector Working Group



Energy Sector Working Group



Urban Development Sector Working Group



Water and Sanitation Sector Working Group



Information and Communications Technology Sector Working Group



Environmental and Social Working Group



Sustainable Infrastructure Management Working Group



PRIF Week 8-11 Oct 2024





Pacific Region Infrastructure Facility

theprif.org