



# Gender Mainstreaming in ADB Projects

January 2024

**Mary Alice Rosero**, Senior Social Development Specialist (Gender)

**Samina Sabir**, Gender Officer for Pakistan Operations

# Strategy 2030

Strategy 2030 aims to help ADB member countries to achieve the **Sustainable Development Goals (SDGs)**; and ADB's Corporate Results Framework is aligned with the SDGs.



## Operational Priority 2: Accelerating progress in gender equality



# ADB Gender Mainstreaming Policy

- **ADB Policy on the Role of Women in Development (WID), 1985**
  - ❖ “Add women and stir” approach
- **ADB Policy on Gender and Development (GAD), 1998**
  - ❖ Adopts gender mainstreaming as a key strategy for promoting gender equity in all ADB operations and sectors.
  - ❖ Systematically addressing gender issues in country partnership strategies (CPS), carrying out gender analysis in all projects to identify gender issues and measures to address these issues, and considering gender in all stages of the project cycle
- **Guidelines on Gender Mainstreaming Categories**  
**2010, 2012, 2021**



# Gender Targets At-Entry and At-Exit

## ADB Corporate Targets

- 55% of the total number of ADB's committed operations (on a 3-year rolling average, including sovereign and non-sovereign operations) will be categorized as GEN/EGM by 2030
- No more than 25% of projects are categorized as NGE
- 80% of completed operations deliver intended gender equality results (sovereign & nonsovereign) by 2024

## CWRD Achievements in 2023

- 86% of the 21 committed projects are GEN (3) and EGM (15)
- 1 project was categorized as NGE
- 87% of PCRs categorized as GEN/EGM at-entry are rated "successful" at project completion



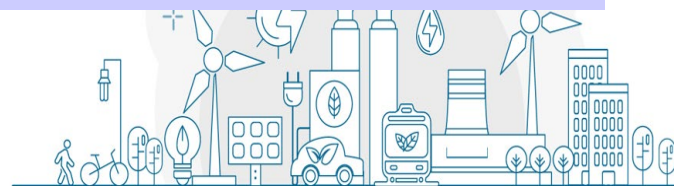
# Gender Categories of ADB Projects (Categorized At-Entry)

## Cat. 1: Gender Equity Theme (GEN)

- **Social and Gender analysis**
- **Design and monitoring framework (DMF)**
  - At least 1 gender indicator at the Outcome level
  - 50% or more of the Outputs have at least 1 significant gender indicator
- **Gender Assessment and Action Plan (GAAP)**
- **Project Administration Manual**
  - Section VIII. Social and Gender
- **Loan/Grant Agreement**

## Cat. 2: Effective Gender Mainstreaming (EGM)

- **Social and Gender analysis**
- **Design and Monitoring Framework (DMF)**
  - 50% or more of the Outputs have at least 1 significant gender indicator
- **Gender Assessment and Action Plan (GAAP)**
- **Project Administration Manual**
  - Section VIII. Social and Gender
- **Loan/Grant Agreement**



# Gender Categories of ADB Projects

## Cat. 3: Some Gender Elements (SGE)

- **Social and Gender analysis**
- **Design and monitoring framework (DMF)**
  - At least 2 gender indicators in any or different outputs
- **GAAP** is not required
- **Project Administration Manual**
  - Section VIII. Social and Gender
- **Loan/Grant Agreement**

## Category 4: No Gender Elements (NGE)

- **Social and Gender analysis**
- **Project Administration Manual**
  - Section VIII. Social and Gender
- **Loan/Grant Agreement**

Only those projects categorized as **GEN** and **EGM** count towards meeting ADB's corporate gender targets.



## Jinny in the Bottle



To fulfil one wish of you but that has to be  
around your GAP



# Assessing Gender Equality Results (Assessed At-Exit)

## Assessment Criteria:

Successful implementation of the **Gender Action Plan**

- at least 80% of **ACTIVITIES** are implemented and completed, AND
- (Quantitative) **TARGETS** : Either of the following are met:  
at least 80% of all targets are fully (100%) met, OR  
at least 80% of the numerical value of every target is achieved  
(80-80-80 Rule)

## Revisions in GAP and DMF Gender Targets:

- Discouraged. Allowed only under extenuating circumstances, BUT should be consulted and agreed with CCGE.
- Can be done only during midterm review missions and documented in the Aide Memoir.





# Thank you

For further information on Gender, contact;

[mrosero@adb.org](mailto:mrosero@adb.org)

[ssabir@adb.org](mailto:ssabir@adb.org)

