



REGIONAL FLYWAY INITIATIVE TRAINING SERIES:  
**Workshop on Wetland Ecosystem Services  
and Nature-based Solutions  
THAILAND**

27–29 November 2023



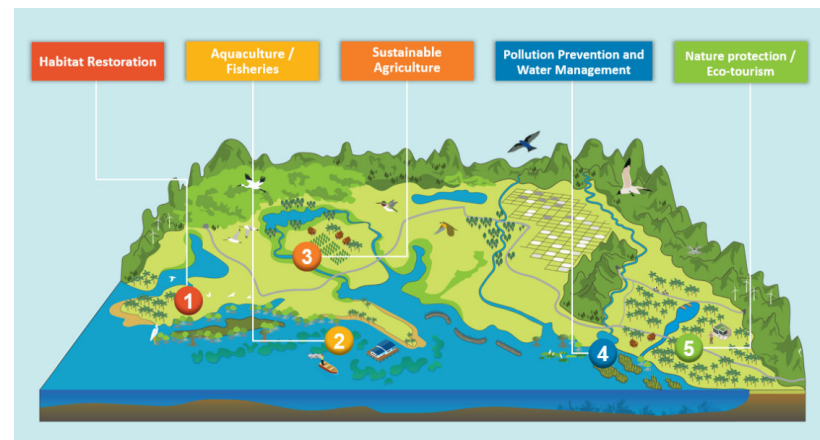
## **East Asian-Australasian Flyway - Regional Flyway Initiative QUICK OVERVIEW**

**Duncan Lang, Asian Development Bank**

Disclaimer: The views expressed on this document are those of the author/s and do not necessarily reflect the views and policies of the Asian Development Bank (ADB) or its Board of Governors or the governments they represent. ADB does not guarantee the accuracy of the data included in this publication and accepts no responsibility for any consequence of their use. By making any designation of or reference to a particular territory or geographic area, or by using the term “country” in this document, ADB does not intend to make any judgments as to the legal or other status of any territory or area.

## Regional Flyway Initiative (RFI) – AIM: Mobilize \$3 billion of investment in wetland protection and management to have flyway level impact

- **Aligned with** EAAFP Strategic Plan, UNCBD, Paris Agreement, Ramsar, UNESCO
- **\$100 Billion Climate Commitment** ADB target cumulative investment by 2030 – Nature will be key to deliver climate adaptation and resilience
- **Regional.** East, Central, Southeast Asia and Pacific. Initial focus on 8 countries including Thailand
- **RFI timeframe. Phase 1 (2021–2024):** project development, **Phase 2 (2023–2033+):** implementation
- **Goal.** Improved management of **50 wetlands** (>2 million ha) → building a network of habitats with species numbers maintained or enhanced
- **Co-benefits.** Healthy wetlands: natural capital and ecosystem services; nature-based solutions; livelihoods.



# RFI – Development and Implementation Approach

- **Development Phase 2021 - 2024**

- Needs assessment and capacity building,
- Identify highest priority sites and develop early project concepts for 50,
- Develop granting mechanism.

Financed through existing \$1.7 million grant

---

- **Implementation Phase 2024 – 2034+**

- Develop investment projects at RFI priority sites,
- Establish partnership to monitor and verify delivery of the RFI and support project preparation and scaling up.
- Implement granting mechanism to complement investment projects

Will be financed through blended loan and grant resources

# Development Phase Activities - 1: Knowledge Sharing, Capacity Building

- Profile Raising



- Knowledge Sharing



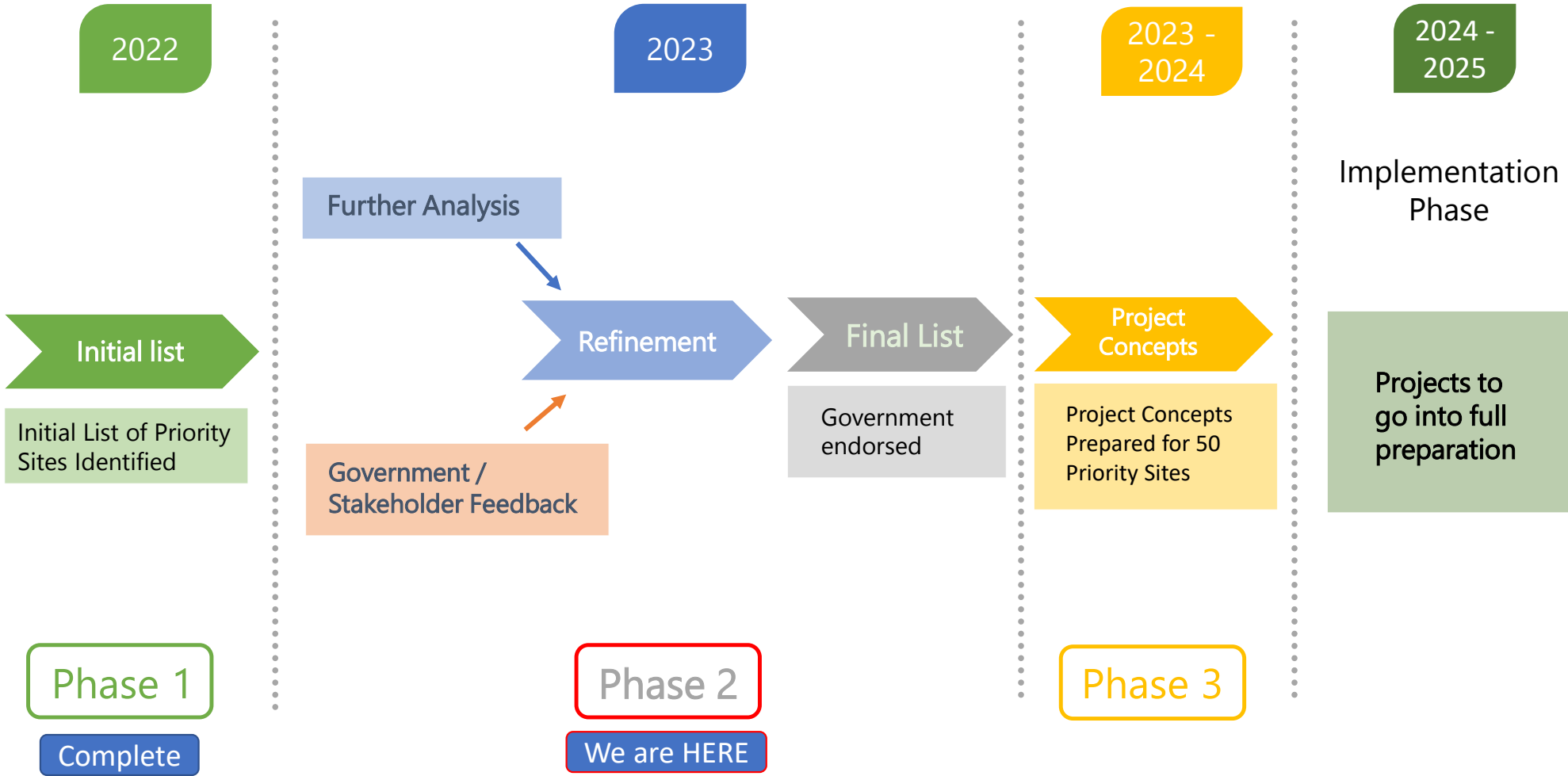
- Capacity Building



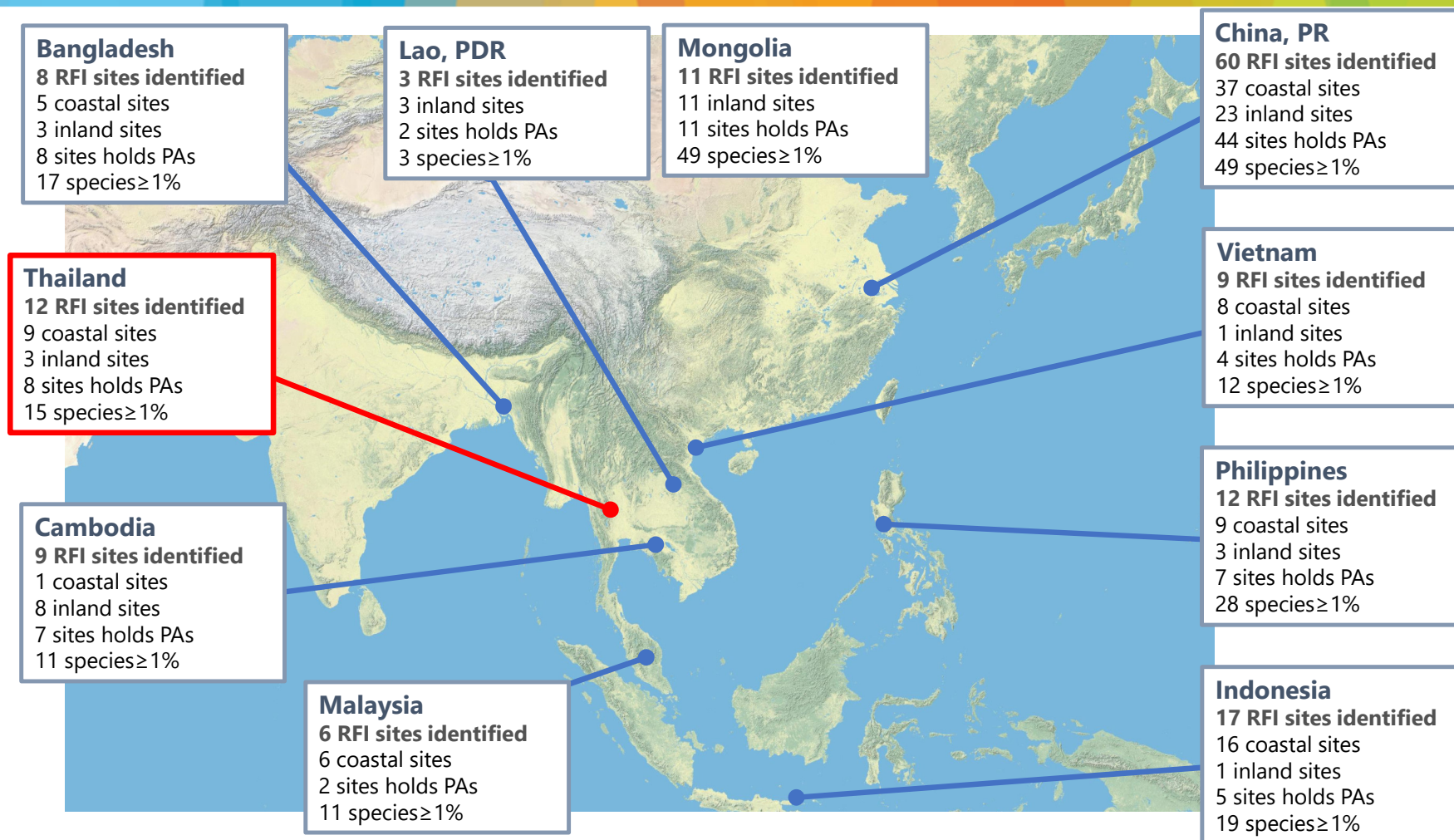
- Building Support



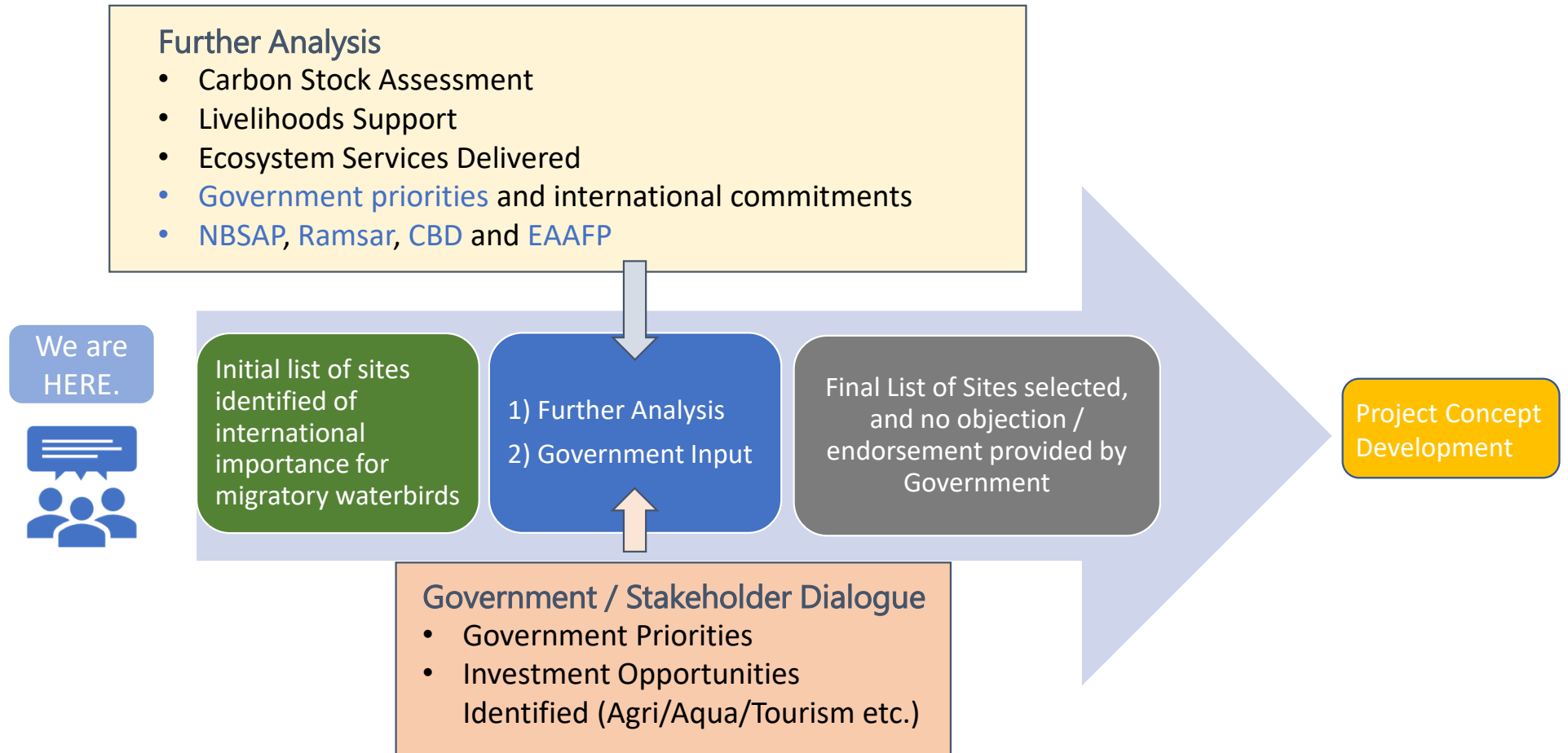
# 2: Phased Site Selection Process



## 2: Site Selection Results RFI Priority Sites across the EAAF



## 2: Site Selection Process – Next Steps



## 2: Ecosystem Services Assessment - Contribution to Project Concept Development

### Ecosystem Services Assessment

- **Identification of key natural assets**
  - ES work identifies key natural assets
  - Establishes monetary value
- **Identification of threats / opportunities**
  - Identifies negative drivers
  - Identified existing degradation and threats
  - Identifies opportunities
- **Stakeholder Feedback**
  - Includes feedback from stakeholders



### Early Project Concept

- Rapid Appraisal
- Enabling Environment
- Identify Co-benefits
- Non-committal Recommendations



## 3: Sustainable Financing Mechanism

- **Consultation**

- Detailed consultation regarding the financing mechanism has been undertaken.

- **Desk Study**

- Literature review on conservation finance and lessons-learned/challenges and opportunities compiled.

- **Options Appraisal**

- Three possible mechanism designs preparation and under review to be completed by end of 2023.

- **Donor Identification**

- Significant interest from donor organizations including GEF/GCF.

# What RFI projects may look like – 5 indicative models

## Ecosystem Services and Co-Benefits in Wetlands



Source: ADB adapted from TEEB Europe

