



ASEAN
AUSTRALIA
SMART CITIES
TRUST FUND
Asian Development Bank



Implementation Partner:

RAMBOLL

MAKASSAR

Supporting Makassar's smart and livable city goals

Photo: Arief Hidayat on Unsplash.com

Makassar City, the capital of South Sulawesi and Indonesia's 5th largest city, aims to be at the forefront of smart cities in Indonesia. To support the city's vision, the Makassar Livable City Plan (MLCP) is providing the city with a data-driven approach to enhance the city's livability and foster smart urban development over the next two decades.

CONTEXT AND STRATEGIC ISSUES

Makassar City is a thriving, highly urbanized trading hub situated along the Makassar Strait in Indonesia's South Sulawesi region. Over the next 20 years, the city's population is expected to grow to a total of 2 million people. With this increasing population and rapid urbanization come certain challenges across various sectors. This includes managing high urbanization and population growth in the context of COVID-19 and climate change, and aligning economic growth and livability, particularly to promote tourism, economic diversity, and investment attraction.

The potential smart city interventions identified in the MLCP seek to address these cross-sectoral challenges

CONTRIBUTIONS TO THE SUSTAINABLE DEVELOPMENT GOALS



The MLCP helps the city to prioritize investments that aligns economic growth with livability and promoting economic diversity.



The MLCP adopts and promotes digital technologies in the development of smart city interventions.



The MLCP helps improve the livability of Makassar through smart urban interventions that addresses urbanization challenges.



The MLCP provides smart city interventions and tools that help enhance Makassar's climate resilience.



SCAN CODE FOR
DIGITAL VERSION

bit.ly/AASCTFMAK

DATA-DRIVEN DIGITAL URBAN DEVELOPMENT TOOLS FOR MAKASSAR



The ASEAN Australia Smart Cities Trust Fund (AASCTF) in collaboration with the Makassar City Government developed a set of potential smart city interventions to address the city's needs and challenges and improve livability. Leveraging expert analysis, the MLCP is a comprehensive suite of plans, assessments, and potential interventions that can be used to integrate Makassar's existing spatial plans under an umbrella framework focused on smart growth, enhance future city planning processes, and serve as a strategic framework for smart urban development and a road map for smart city and livability investment priorities in Makassar.

The MLCP is built upon the findings of a detailed multi-sectoral Urban Situation Assessment, which identified challenges and needs in Makassar, and an Urban Development Scenario analysis that reviewed population and land use projections. It also provides a road map for potential next steps and opportunities for continuing the work of the MLCP. This includes supporting the city to prioritize, develop, implement, and maintain smart city interventions, as well as actions and measures to adopt digital technologies and enhance institutional effectiveness.

An interactive online portal provides access to data, multi-disciplinary assessments, and recommendations, along with a suite of digital tools to support local evidence-based decision-making. The MLCP aims to support Makassar in enabling a data-driven response that enhances inter-agency collaboration and integration, and prioritizing investments for the purpose of implementing intelligent interventions to help realize the city's ambitious development plan to enhance its public services and support sustainable growth.

MLCP COMPONENTS



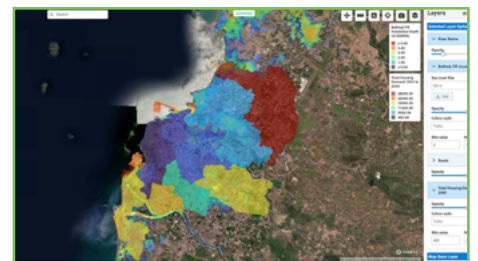
Scan code to access the Makassar Livable City Plan or visit bit.ly/MAKMLCP



MLCP Prioritization Tool, an interactive digital dashboard that helps the city government in evaluating potential smart city interventions and help identify investment priorities.



Stakeholder Engagement Dashboard, an interactive digital dashboard that presents and visualizes analytics from a citizen survey to help identify high-priority government services valued by citizens that are in need of improvement.



INDRA Makassar, a digital climate resilience platform developed by Australia's Commonwealth Scientific and Industrial Research Organisation (CSIRO) for visualizing spatial and climate change data projections to inform urban planning.

ABOUT THE ASEAN AUSTRALIA SMART CITIES TRUST FUND

The ASEAN Australia Smart Cities Trust Fund (AASCTF) assists ASEAN cities in enhancing their planning systems, service delivery, and financial management by developing and testing appropriate digital urban solutions and systems. By working with cities, AASCTF facilitates their transformation to become more livable, resilient, and inclusive, while in the process identifying scalable best and next practices to be replicated across cities in Asia and the Pacific. The Trust Fund is supported by the Australian Government through the Department of Foreign Affairs and Trade, managed by the Asian Development Bank, and implemented by Ramboll.