



วิทยาลัยวิทยาศาสตร์สาธารณสุข
College of Public Health Sciences
Chulalongkorn University

This is not an ADB material. The views expressed in this document are the views of the author/s and/or their organizations and do not necessarily reflect the views or policies of the Asian Development Bank, or its Board of Governors, or the governments they represent. ADB does not guarantee the accuracy and/or completeness of the material's contents, and accepts no responsibility for any direct or indirect consequence of their use or reliance, whether wholly or partially. Please feel free to contact the authors directly should you have queries.

BIO CIRCULAR GREEN ECONOMY (BCG)

Mitigation of pollutions and conceptualization of green hospital initiatives in the community

Associate Professor Nutta Taneepanichskul, PhD

**College of Public Health Sciences,
Chulalongkorn University (Thailand)**

Date: 7 July 2023 Time: 2:45 – 3:00 PM

BIO-CIRCULAR-GREEN ECONOMY (BCG)

Thai Government as a strategy for the national development and post-pandemic recovery. This model emphasis on **applying science, technology and innovation** to turn Thailand's comparative advantage in **biological and cultural diversity** into competitive advantage.



Forward to



Strategic sectors

- 1) agriculture and food
- 2) wellness and medicine
- 3) energy, materials and biochemicals
- 4) tourism and creative economy

BCG MODEL



Involves the production of renewable biological resources and the conversion of resources

BIOECONOMY



Reusing and recycling resources

CIRCULAR ECONOMY

GREEN ECONOMY



Keep economy, society and the environment in balance

**WELL
MANAGEMENT
AND
STANDARDIZED
HOSPITAL**



Green and Clean Hospital

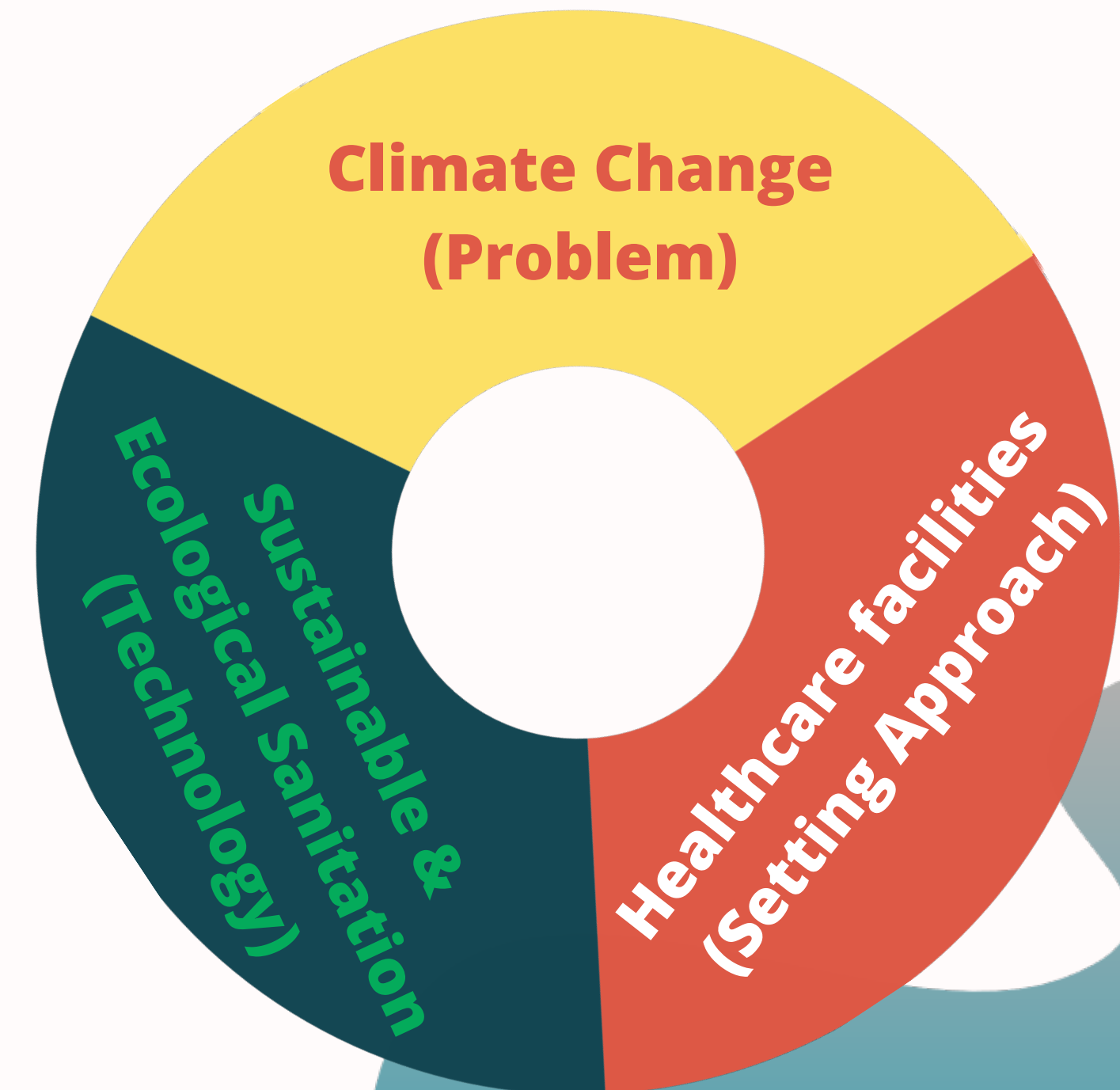


GREEN & CLEAN Hospital

GREEN AND CLEAN HOSPITAL IN THAILAND

Department of Health under the Ministry of Public Health launched the “GREEN and CLEAN hospital” project in 2010.

The main idea of the concept is to change the idea of disposal to sustainable and ecological sanitation.



GREEN Activity

G

Garbage : Waste management by 3Rs (Reduce, Reuse, Recycle)

R

Restroom : Standard of restroom by HAS (Healthy, Accessibility, Safety)

E

Energy : Energy management (Renewable energy, Reduce energy)

E

Environment : Environmental management and Healthy environment by improving the environment in health services based on “**Cleanliness, Safety, Good Environment and Liveliness**” concept.

N

Nutrition : Campaign on organic foods and local vegetables by planting for domestic consumption

“CLEAN” is the strategy of participating and implementing on GREEN activities to be successful. It depends on collaboration among all sectors to implement.

C

Communication: Build awareness and understanding in reducing greenhouse gas emission.

L

Leader: Key role in implementing and mobilizing a good model for the GREEN Hospital project. The role model should be the executives, chief or group head.

E

Effectiveness: Practicing GREEN activities and evaluating reduction of greenhouse gas emission.

A

Activities: Conducting activities in order to build awareness and participation. This is based on sustainable sanitation and eco-friendly concepts under GREEN activities.

N

Network: Participation from networks, community and locality by sharing knowledge and experiences on reducing greenhouse gas emission.

KANOM HOSPITAL REGION 11, THAILAND



- Located in Southern of Thailand

**GREEN & CLEAN HOSPITAL
CHALLENGE 2022**

As a Role model of Environmental management



BANGKOK GREEN & CLEAN HOSPITAL PLUS (BKKGC+)

The Medical Service Department, Bangkok Metropolitan Administration carried out Bangkok GREEN & CLEAN Hospital Plus (BKKGC+) Standard Award for hospitals and medical centers in Bangkok



BKKGC+ Award 2022 on June 20, 2023

Criteria of BKKGC+

- CLEAN
- Garbage
- Restroom
- Energy
- Environment
- Nutrition
- Innovation
- Network
- Carbon Footprint

Green

Plus

STANDARD OF BKKGC+



DIAMOND

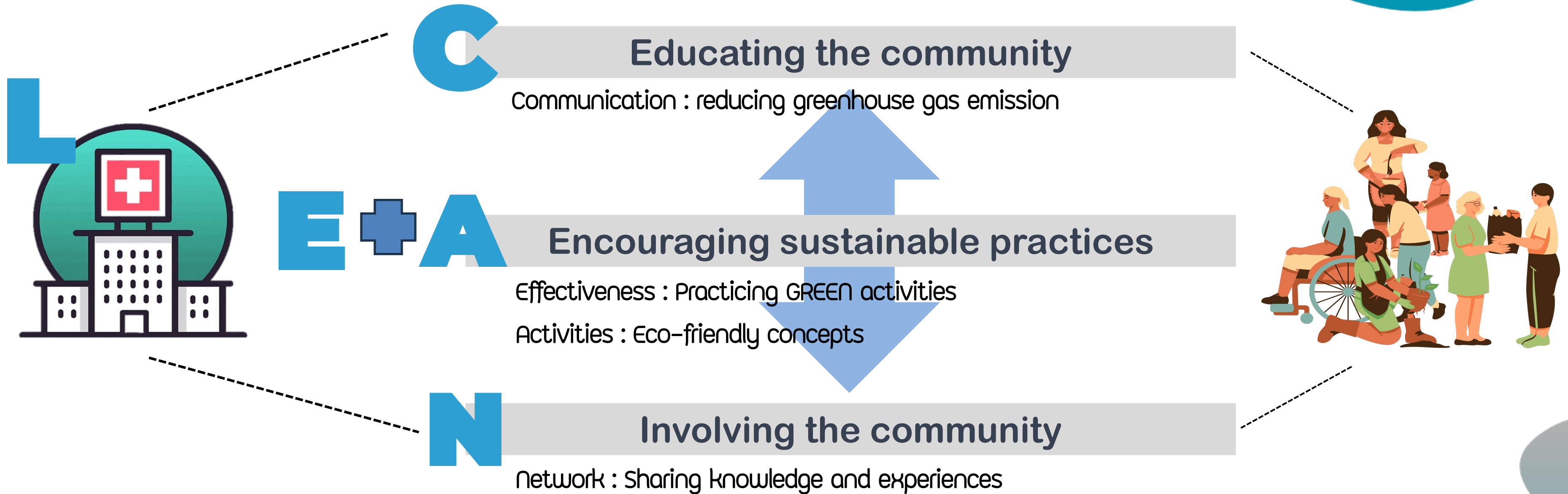


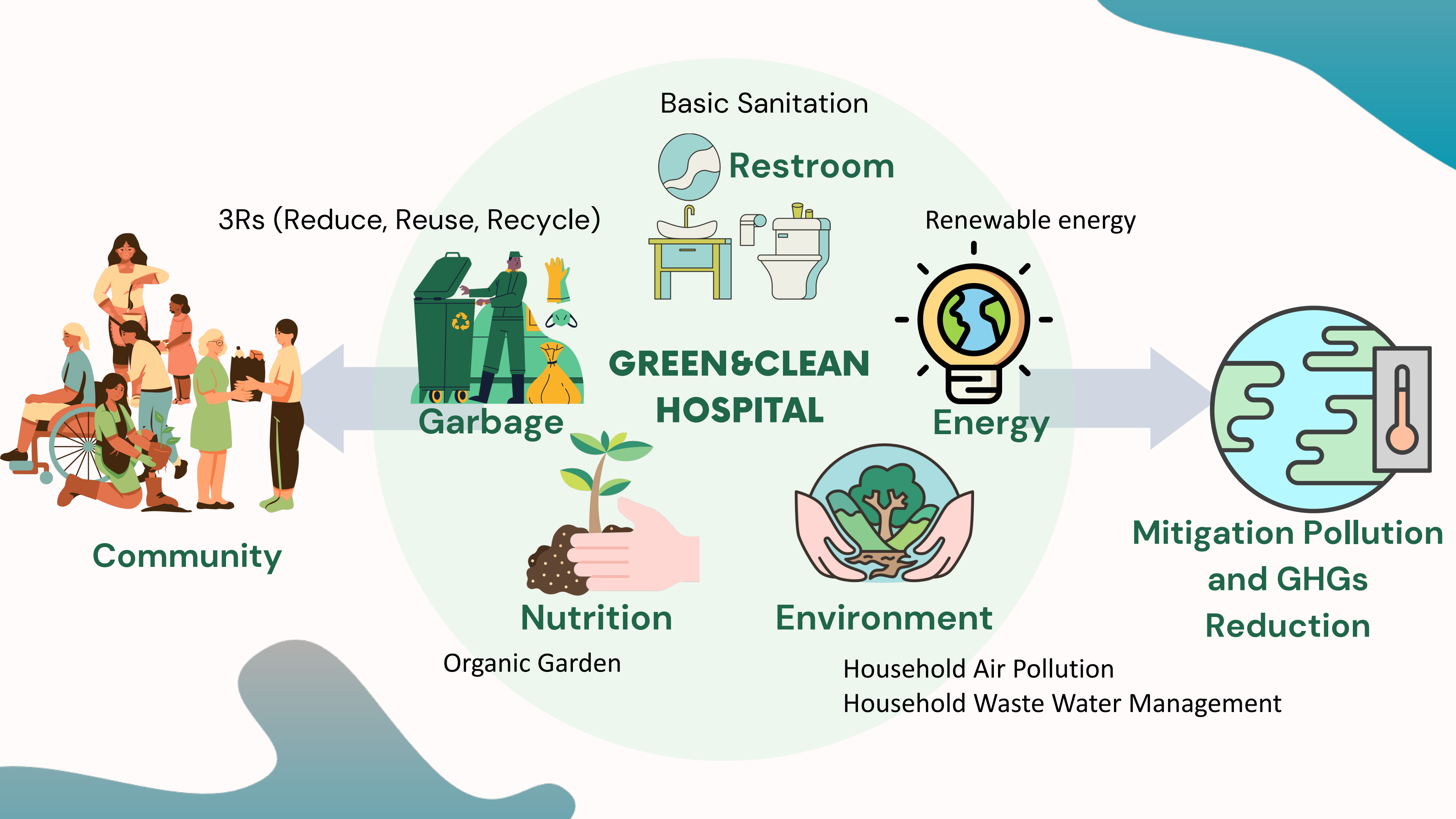
GOLD



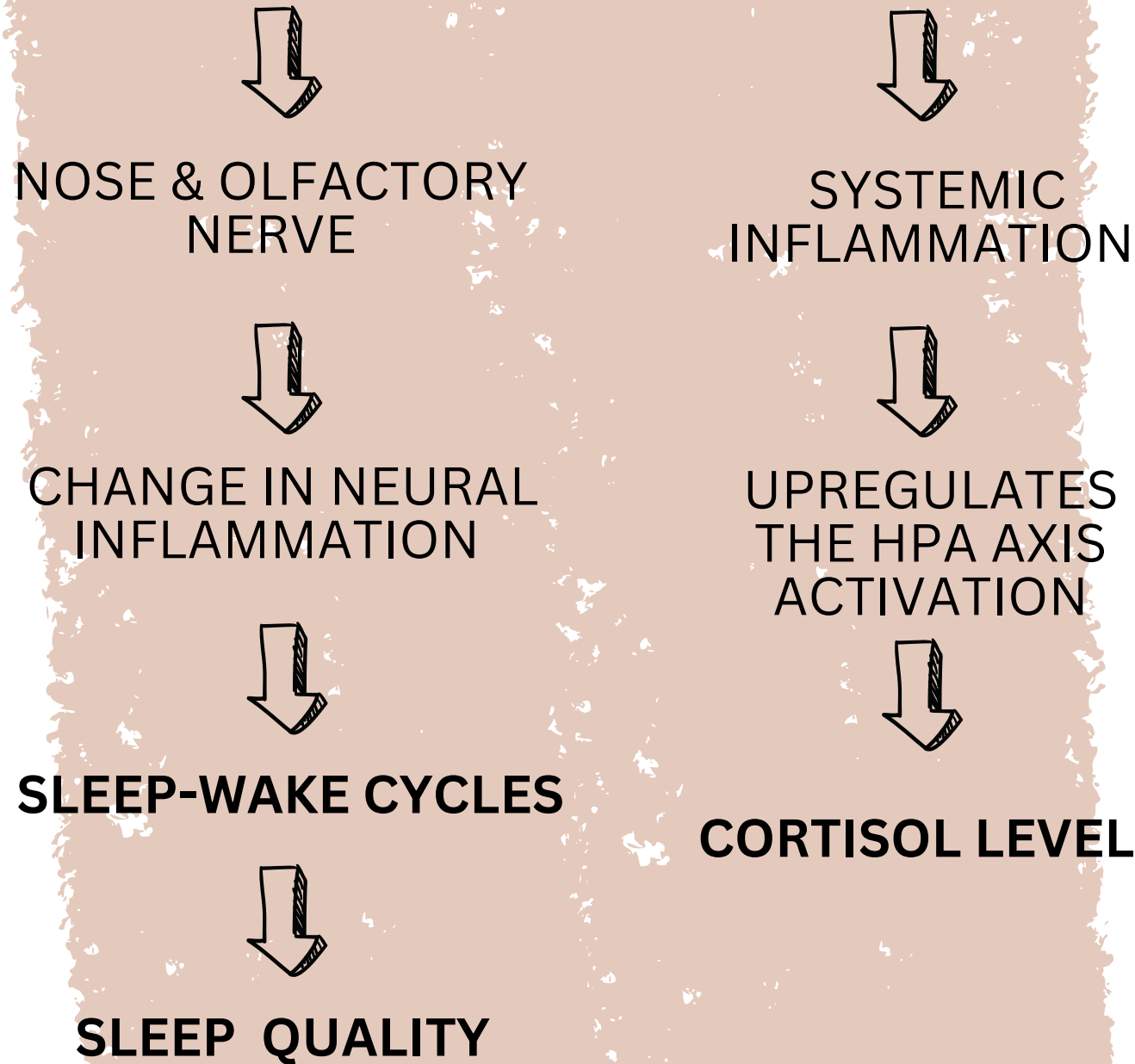
SILVER

Green Hospital Initiatives: Combating Pollution in the Community

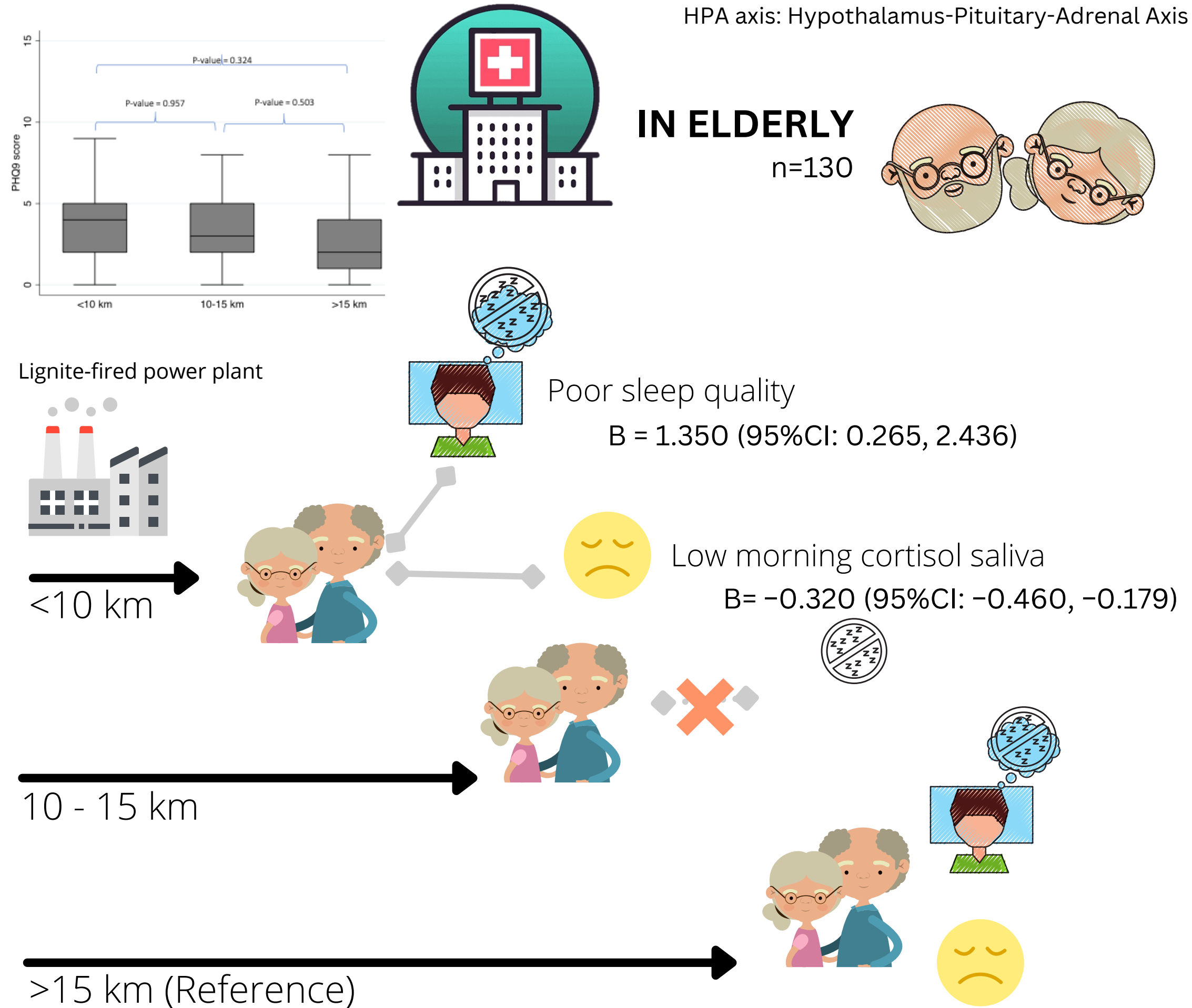




Air Pollution



**THE FLATTER SLOPE OF WAKE-UP CORTISOL LEVEL
 ---> UNHEALTHY OR DYSREGULATED HPA AXIS



**THANK
YOU**