

This is not an ADB material. The views expressed in this document are the views of the author/s and/or their organizations and do not necessarily reflect the views or policies of the Asian Development Bank, or its Board of Governors, or the governments they represent. ADB does not guarantee the accuracy and/or completeness of the material's contents, and accepts no responsibility for any direct or indirect consequence of their use or reliance, whether wholly or partially. Please feel free to contact the authors directly should you have queries.



# Korea's Geospatial Information & Digital Twins

October 31, 2022

*Songwook CHOI*

*Chief Executive Director, LX*



INTERNAL. This information is accessible to ADB Management and staff. It may be shared outside ADB with appropriate permission.



# *Korea in the past*



# ***The Korean War (1950-1953)***



- Civilians killed: 0.8 million people
- Separated families: 10 million people
- More than 80% of the infrastructures and facilities in Korea were totally destroyed
- Per capita GDP: merely \$67 in 1953



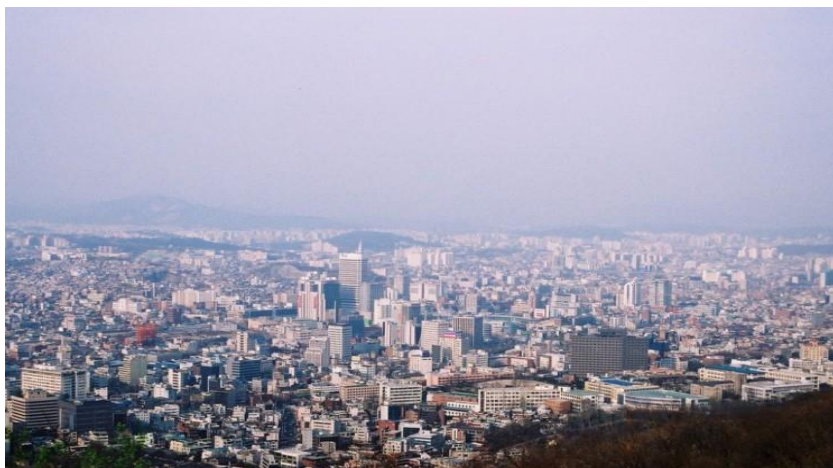
# After the Korean War



<1950s>



<1970s>

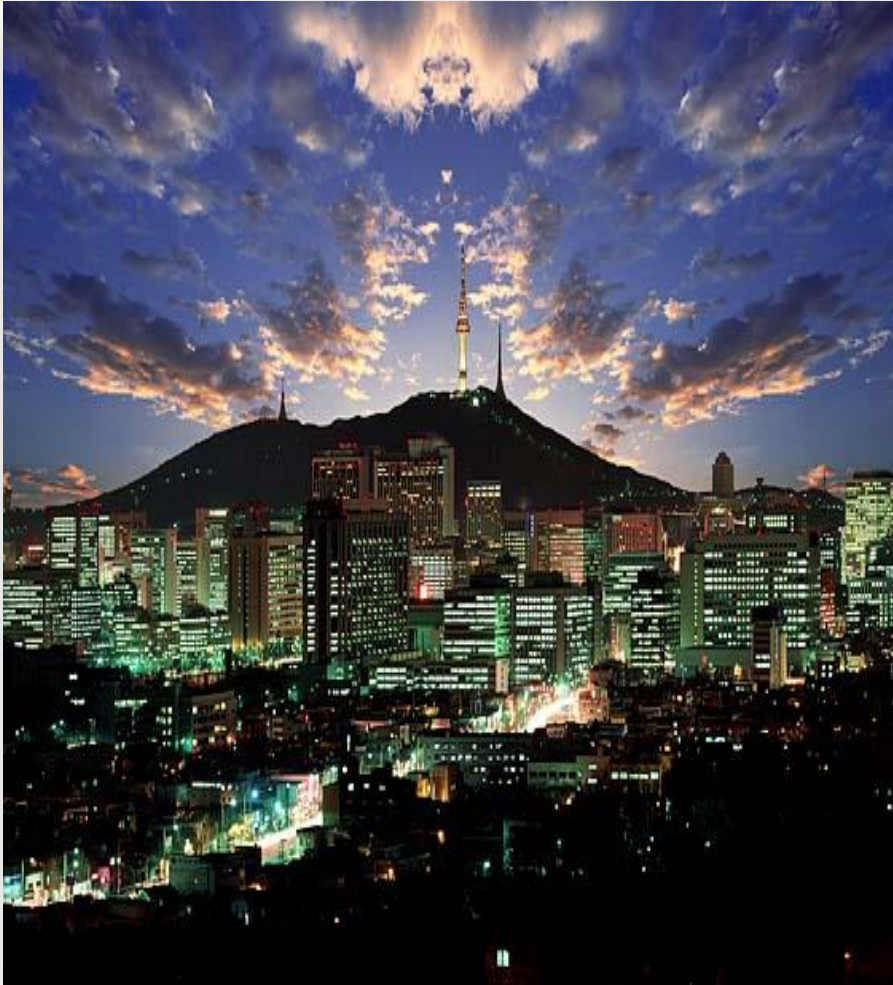


<2000s>



<2020s>

# *Korea.. from the ashes of war*



- **OECD DAC Member**
- Per capita GNP: U\$32,000
- Olympic Games(1988) & World-Cup Games(2002) & Winter Olympics (2018)
- G20 Seoul Summit(2010)
- Leading Country IT & Electronic business
- GDP(\$): **1.9 trillion in 2022**  
**ranked 10<sup>th</sup> in the world**



# National 'Core' Infrastructures in Korea

Export-led Economic Growth  
(1970s)

Expressway Seoul-Busan



Logistics, Automobiles

**[Expressway] Core 'Physical'**  
Infrastructure to support  
Export-led Economic growth  
in 1970s

Overcoming the IMF Crisis  
(2000)

High-speed Internet Network



Wireless Internet, Games

**[Internet Network] Core 'Soft'**  
Infrastructure to lead IT  
Industry like the Internet,  
wireless communication, games

Currently,  
Digital Conversion/Changeover

?



New Future Industry

**[Geospatial Information]**  
Core Infrastructure to  
support development of  
Digital Economic Era

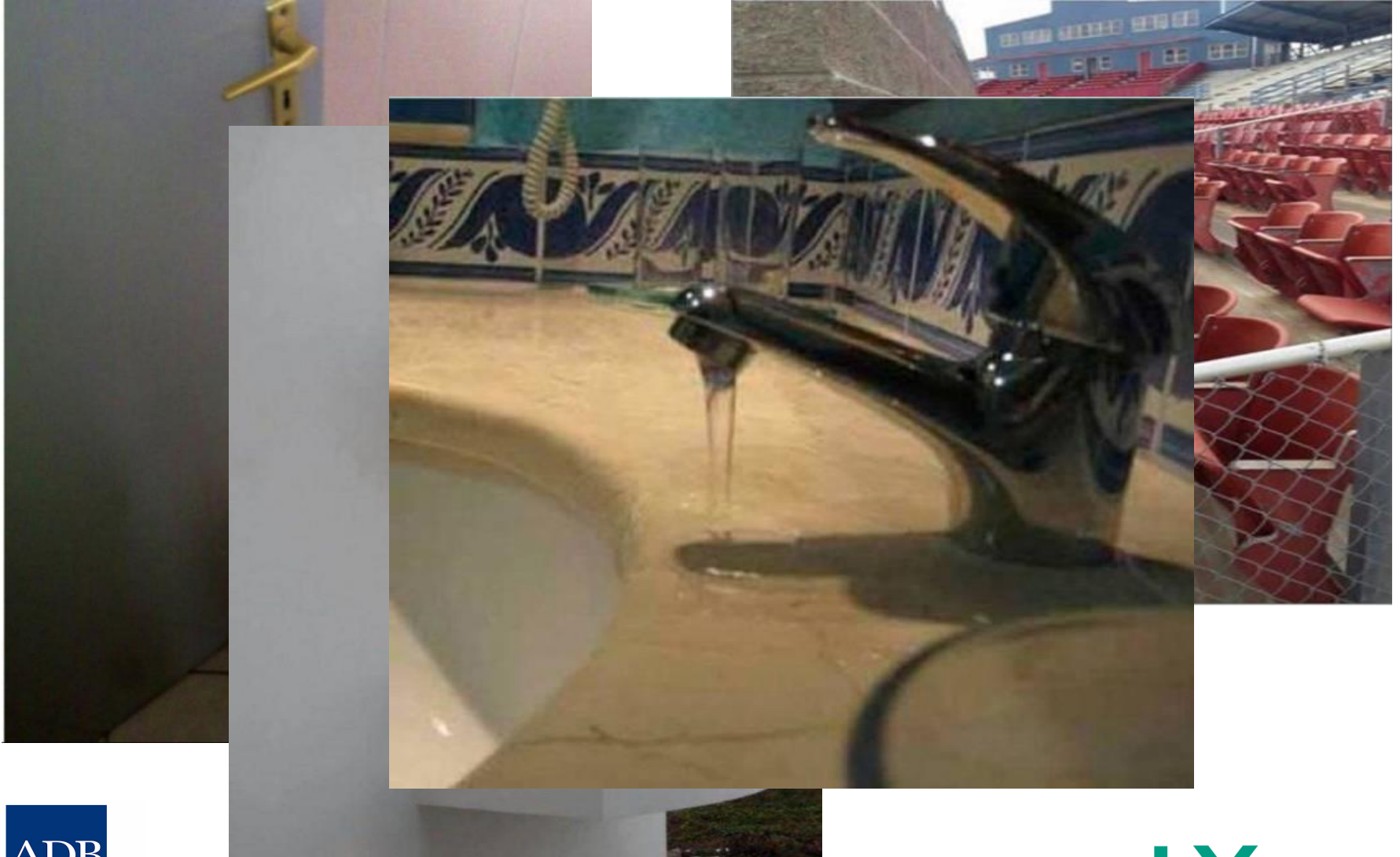


# Space...

## What did you witness and imagine with/beyond space?



# Episodes





# Traffic jam

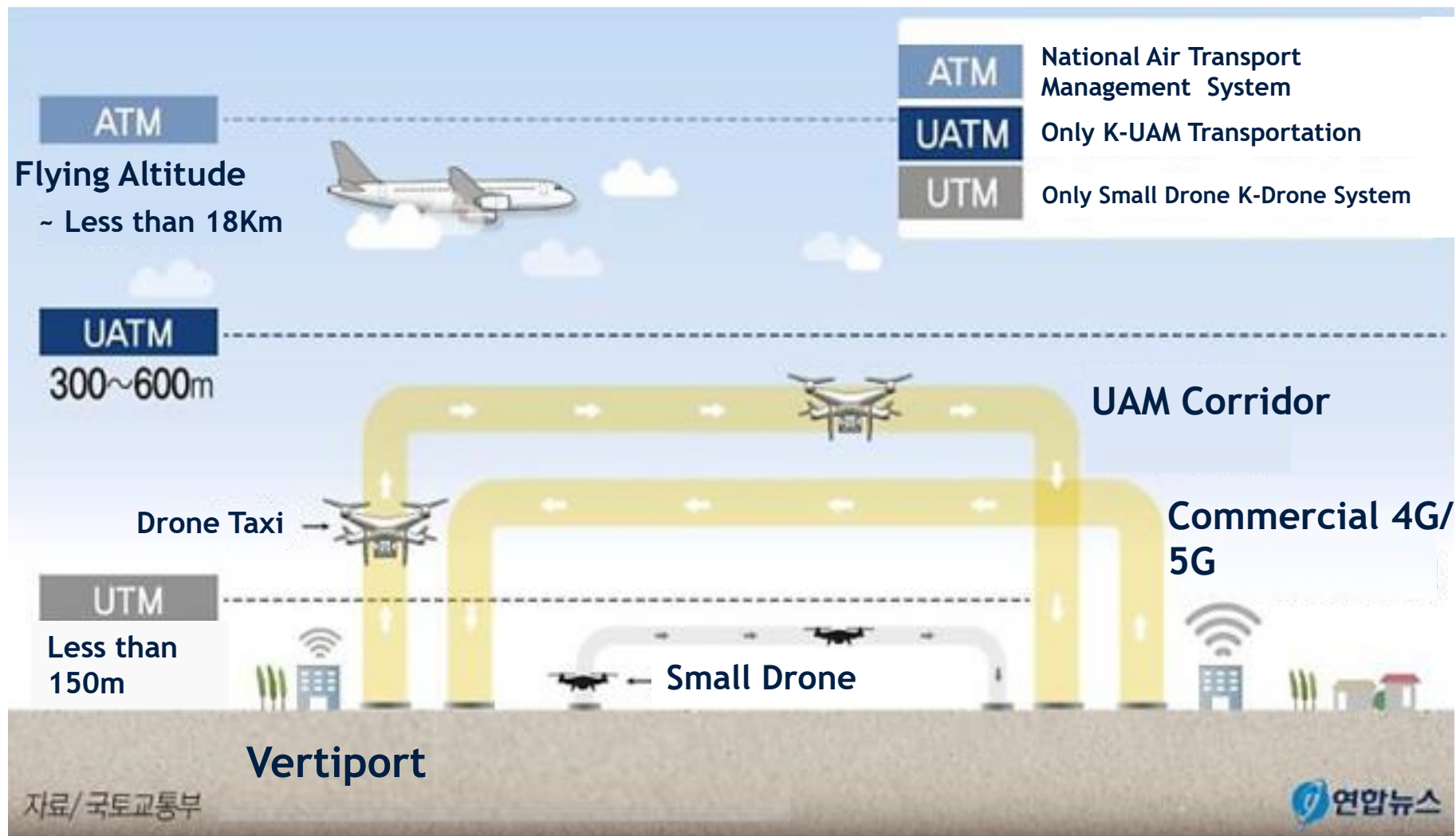




# ***Have you ever imagined a Flying Taxi?***



# Testing a Drone Taxi in Actual World





# *Geospatial Information...*



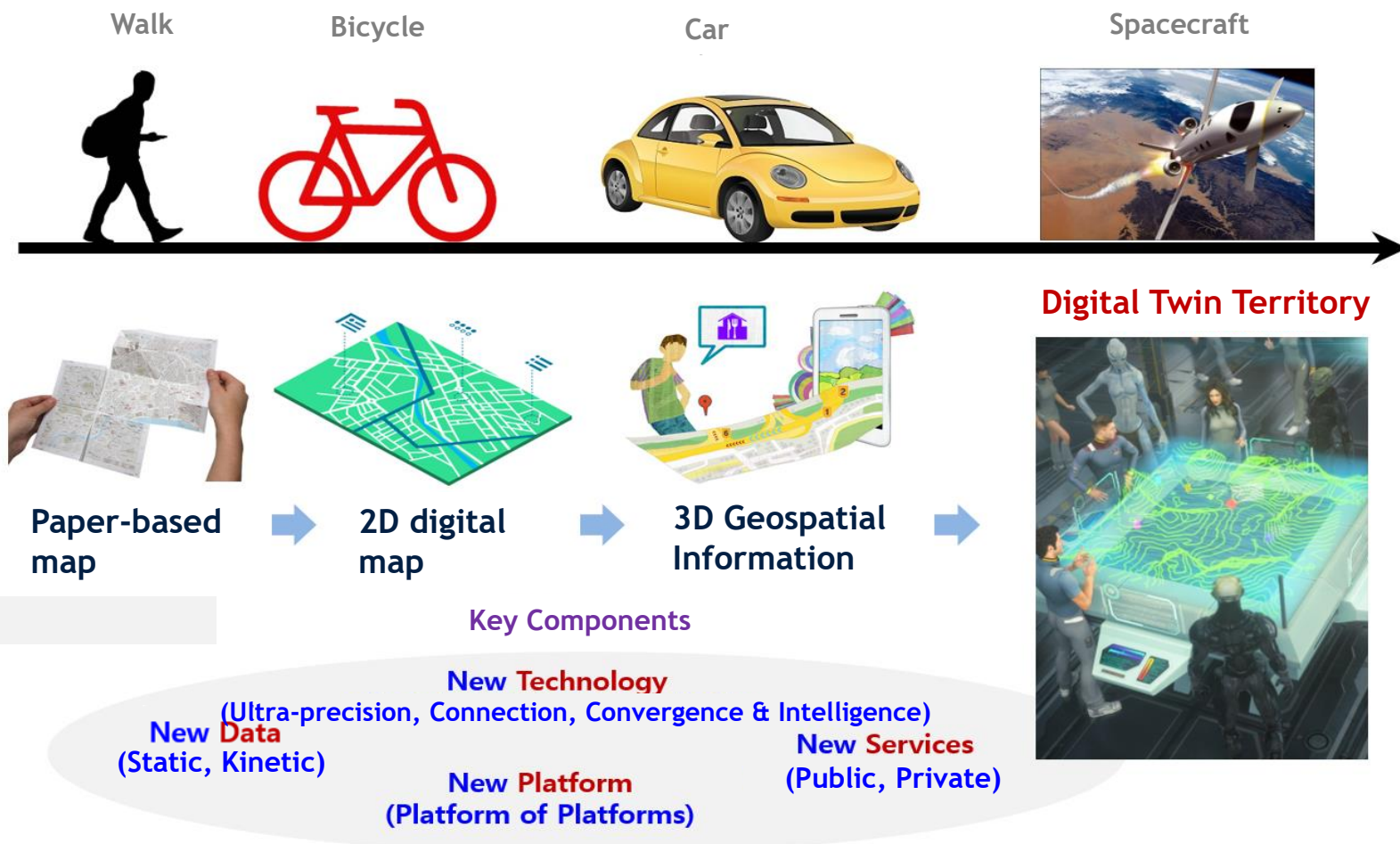
# *What is Geospatial Information (GI)?*

'a Combination of Location and Attribute information'

all information that provides understanding on the location and characteristics of natural or constructed features and boundaries on or about the earth



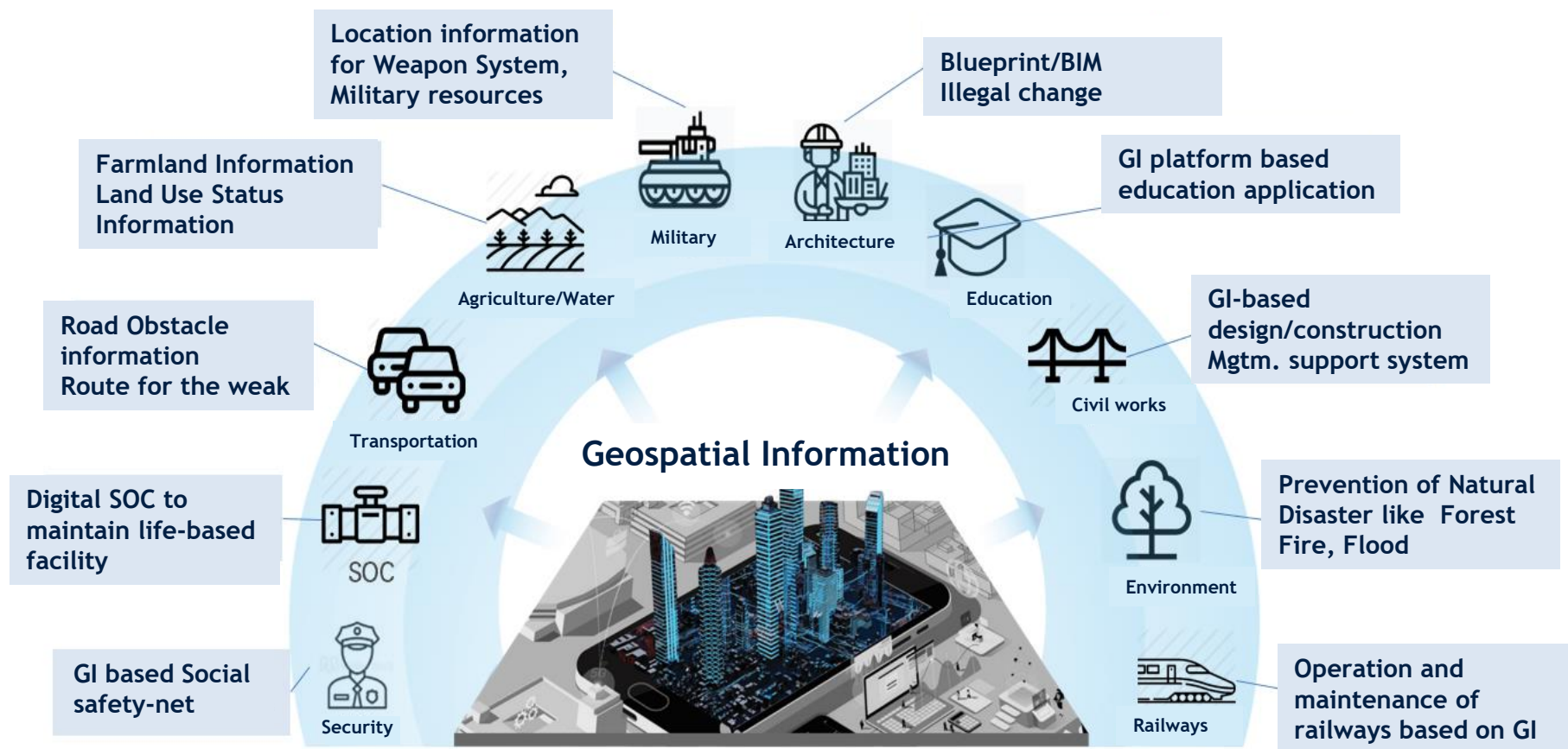
# Digital Economic Era with GI



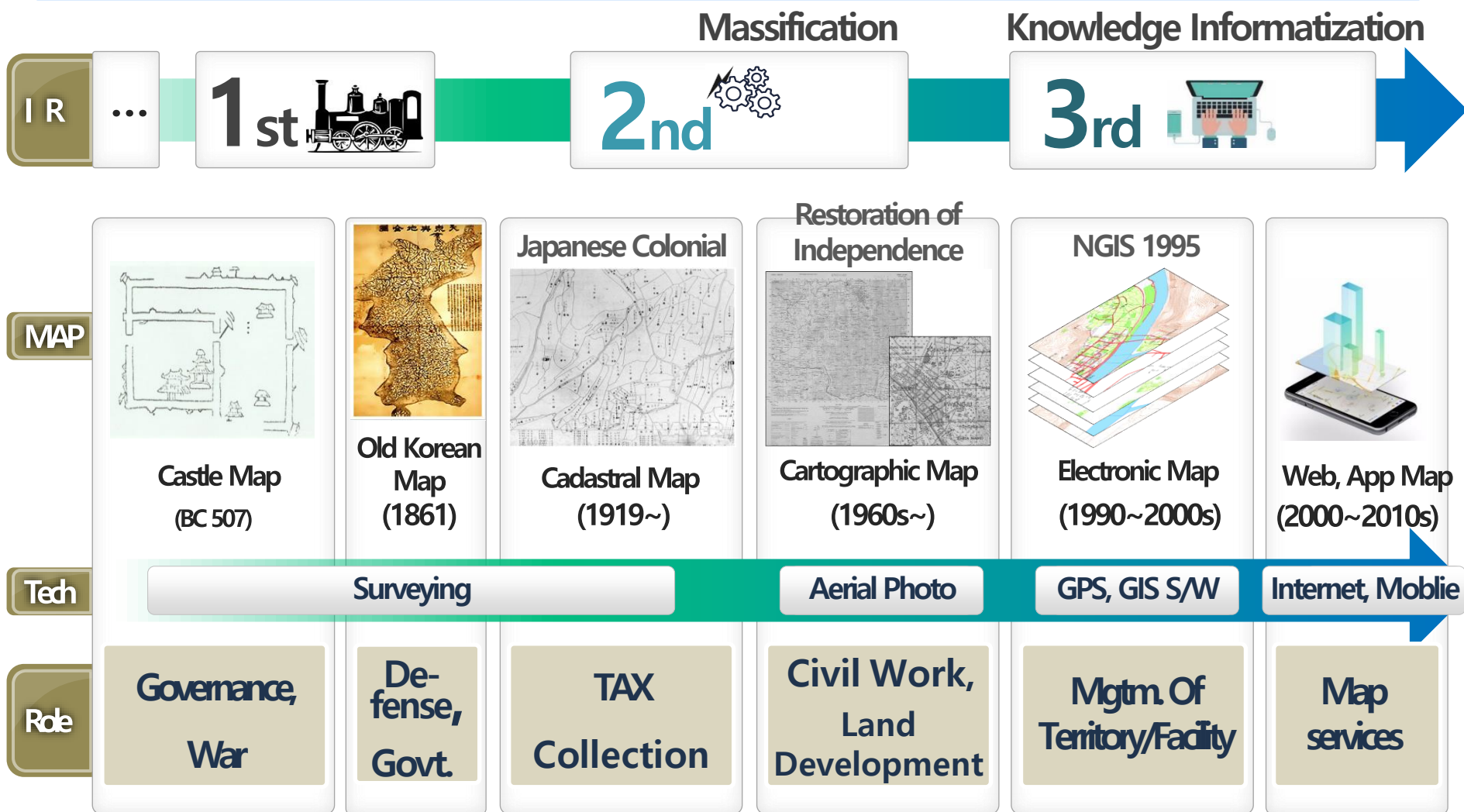


# Over 80% of all Information for Decision-Making

Geospatial Information is an essential infrastructure for diverse sectors



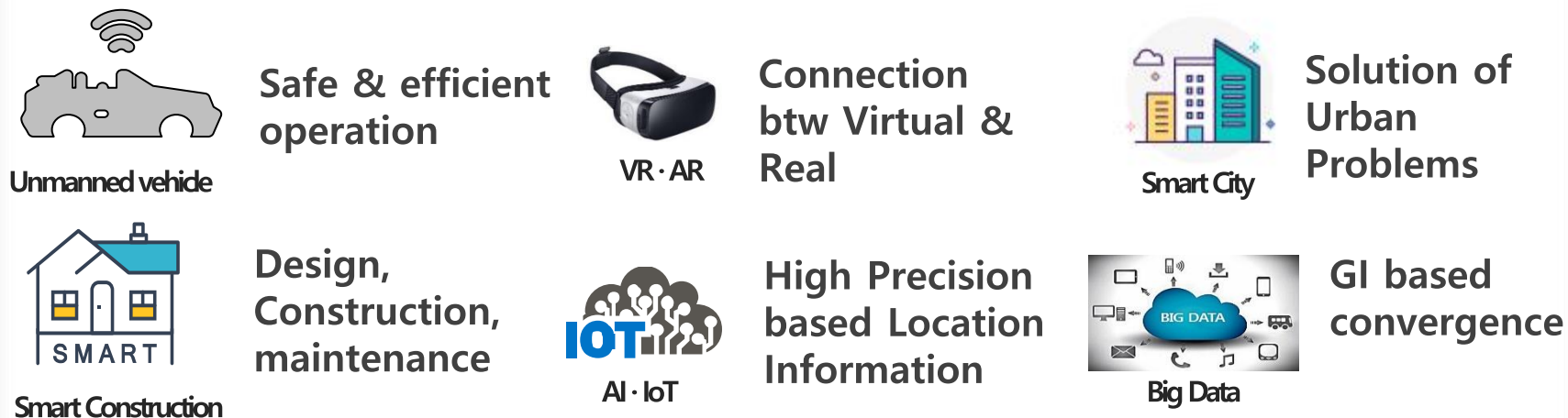
# Industrial Revolutions & Geospatial Information



# Geospatial Information for the Next?

- 4<sup>th</sup> Industrial Revolution: **Convergence** between Social/economic status and the state-of-the-art technology such as Artificial Intelligence(AI), Internet of Things(IoT), Big Data, Mobile → Ultra Connection, Intelligence & Combination

## Key Technology · Industry & GI



GI plays a role in **Engine** and **foundation** for the 4<sup>th</sup> IR



# Concept of GI & Trends changed

## GI Concept

Past/Present

'Person' oriented

See the Map

Miniature of Real World

Future

'Machine', 'People'

Experience-based Space

Twins with the real



## GI Technology

Past/Present

2D, low-accuracy, low-capacity

Separate Information

Static Data

Future

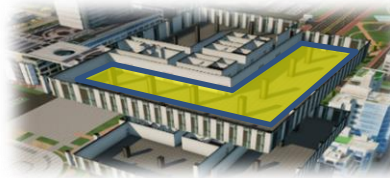
3D, High-accuracy, full capacity

Integrated spatial information

Real time kinetic data

GI has changed into a Platform for diverse data collection/integration/application via new Technology and divergence

3D + Platform + Real · Virtual combination



Toward 「Digital Twin」





# Digital Twins...

*Same condition between  
the Virtual and Real Worlds*



# Twins





# Introduction of Digital Twin Concept



1st BUILDING DIGITAL TWIN  
International Congress

## KEYNOTE

*"Authoring Digital Twin concept"*

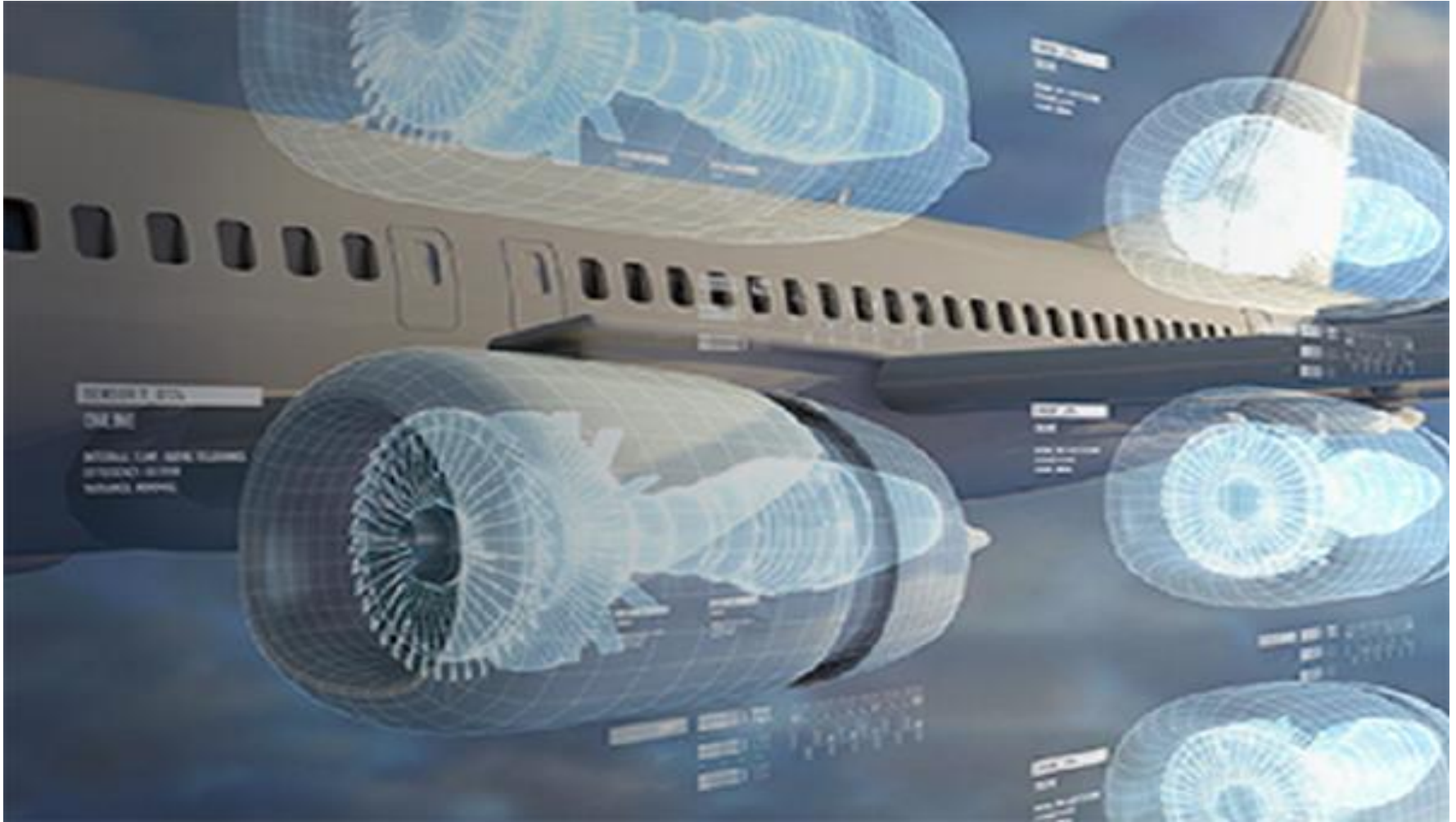


Prof. Michael Grieves  
Chief Scientist for Advanced Manufacturing  
Florida Institute of Technology

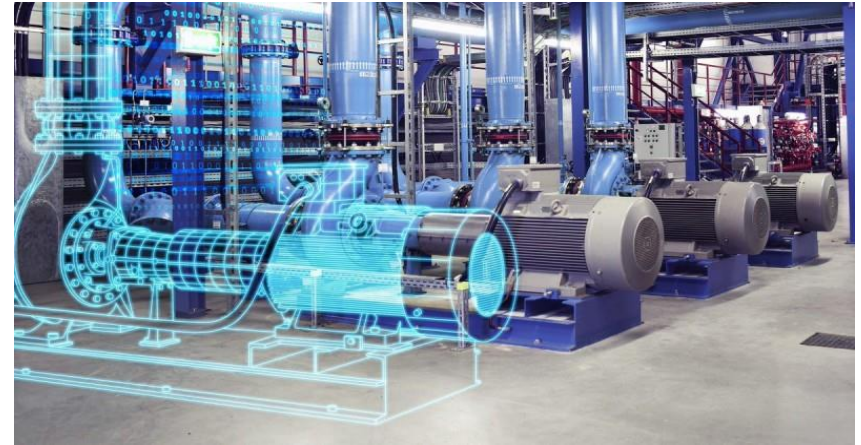
27 MAY 2021  
STREAMING



# *DT concept Application in other sectors (1)*

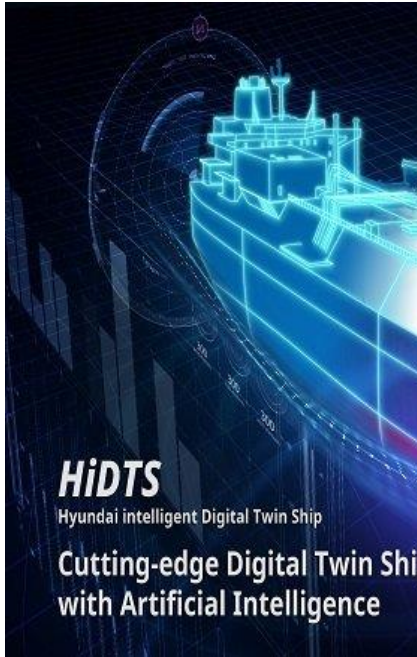


# *DT concept Application in other sectors (2)*





# DT concept Application in other sectors (3)



# ***Definition of Digital Twin***

---

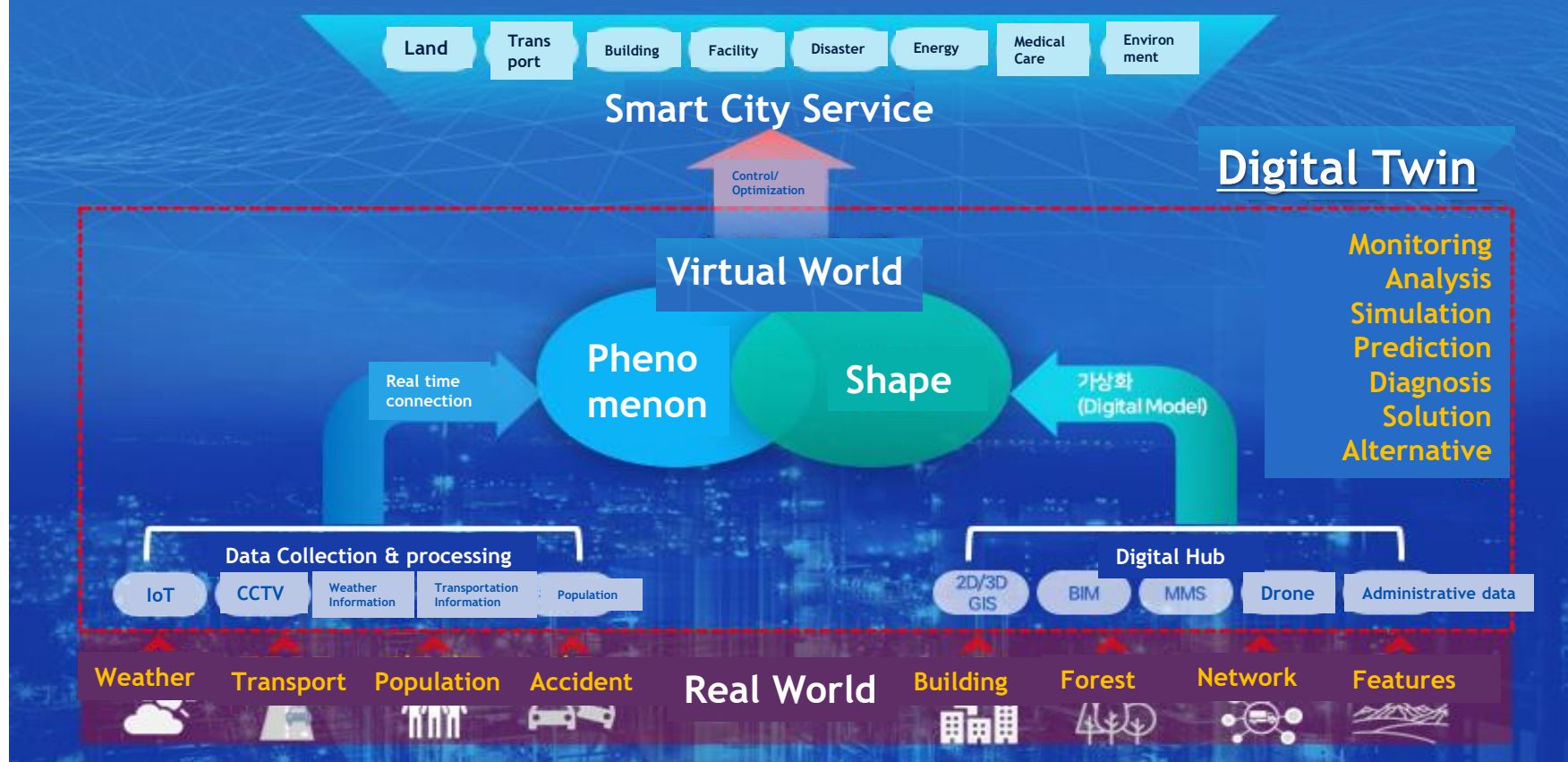
## **Digital Twin**

Technology that **accurately models the real world**  
**in digital space (2D/3D)** and then  
expresses changes that occur in real time,  
and **predicts** reality  
through **analysis and simulation**

# DT as a core tech for Smart City



Digital Twin as a core technology for realization of Smart City

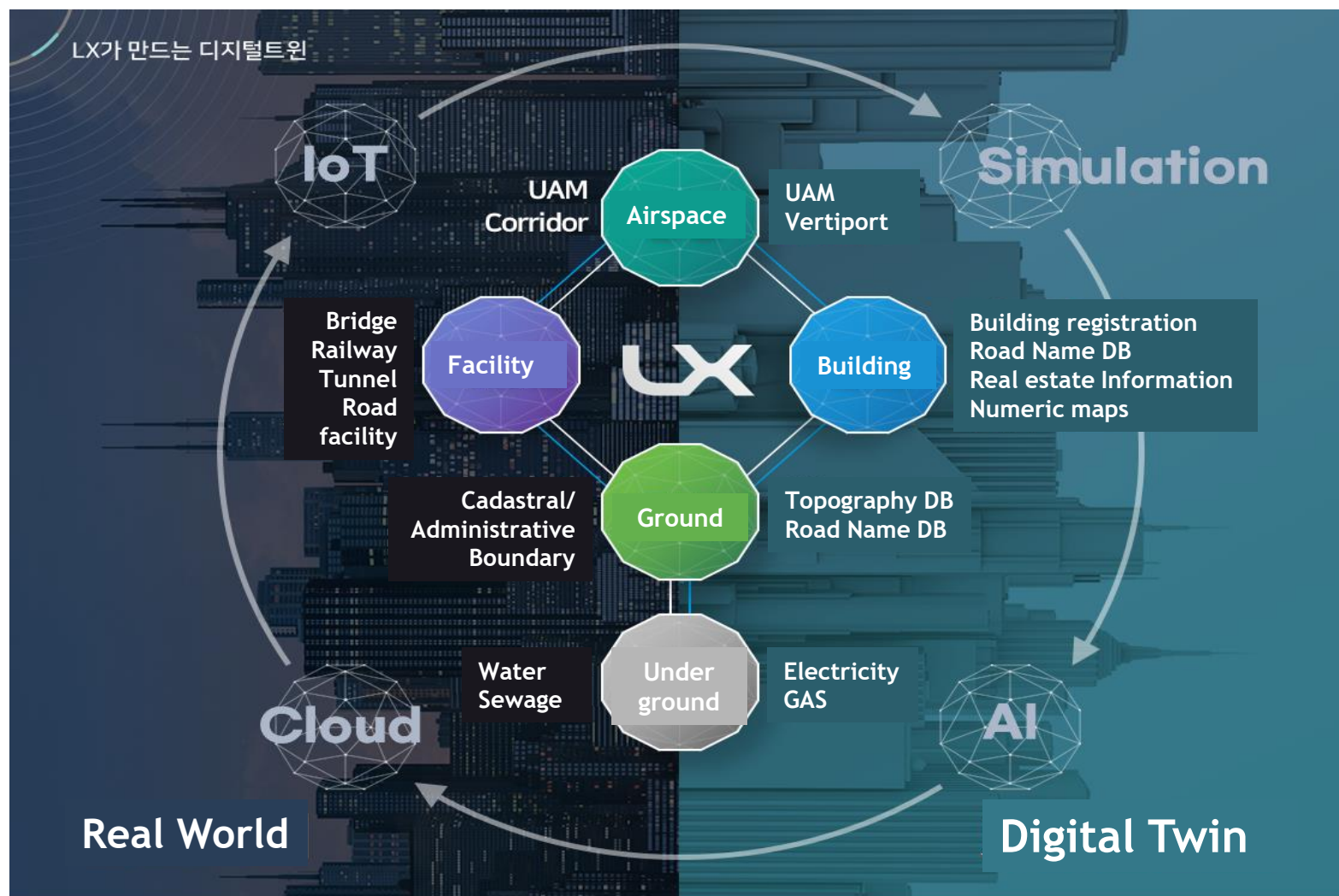




# Collection of Data



# Data on/under/above the ground





# Underground data

## Underground Spatial Integrated Map

### Underground facilities (7 types)

Water line

Sewage line

Electric line

Gas line

Telecom line

Thermal line

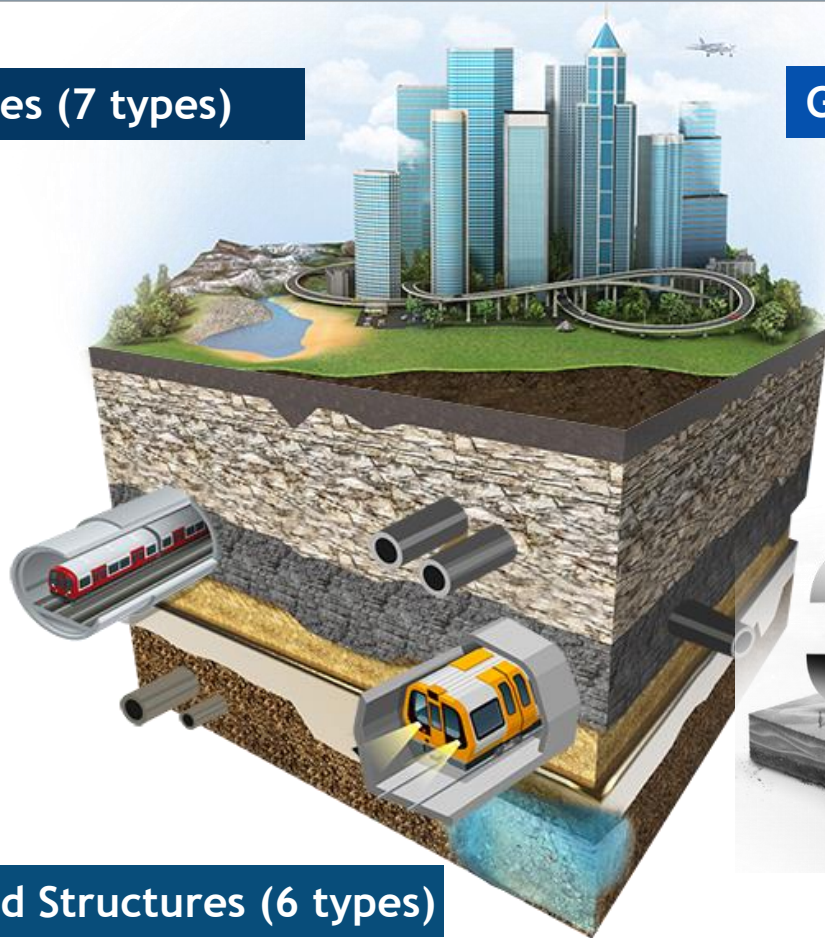
Petroleum line

### Ground Information(3 types)

Drilling/Boring

Tubular well

Geological features



### Underground Structures (6 types)

Subway

Underpass

U.G. passage

U.G. shopping center

Common duct

U.G. Parking Lot

ADB

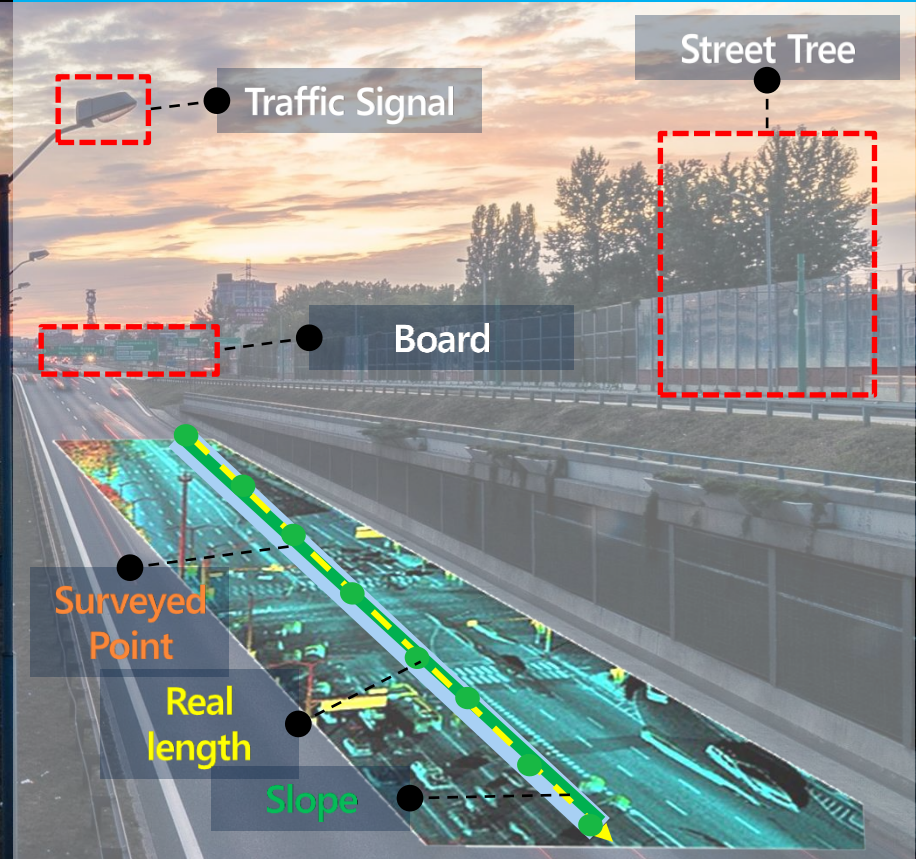


# Ground data (Road)

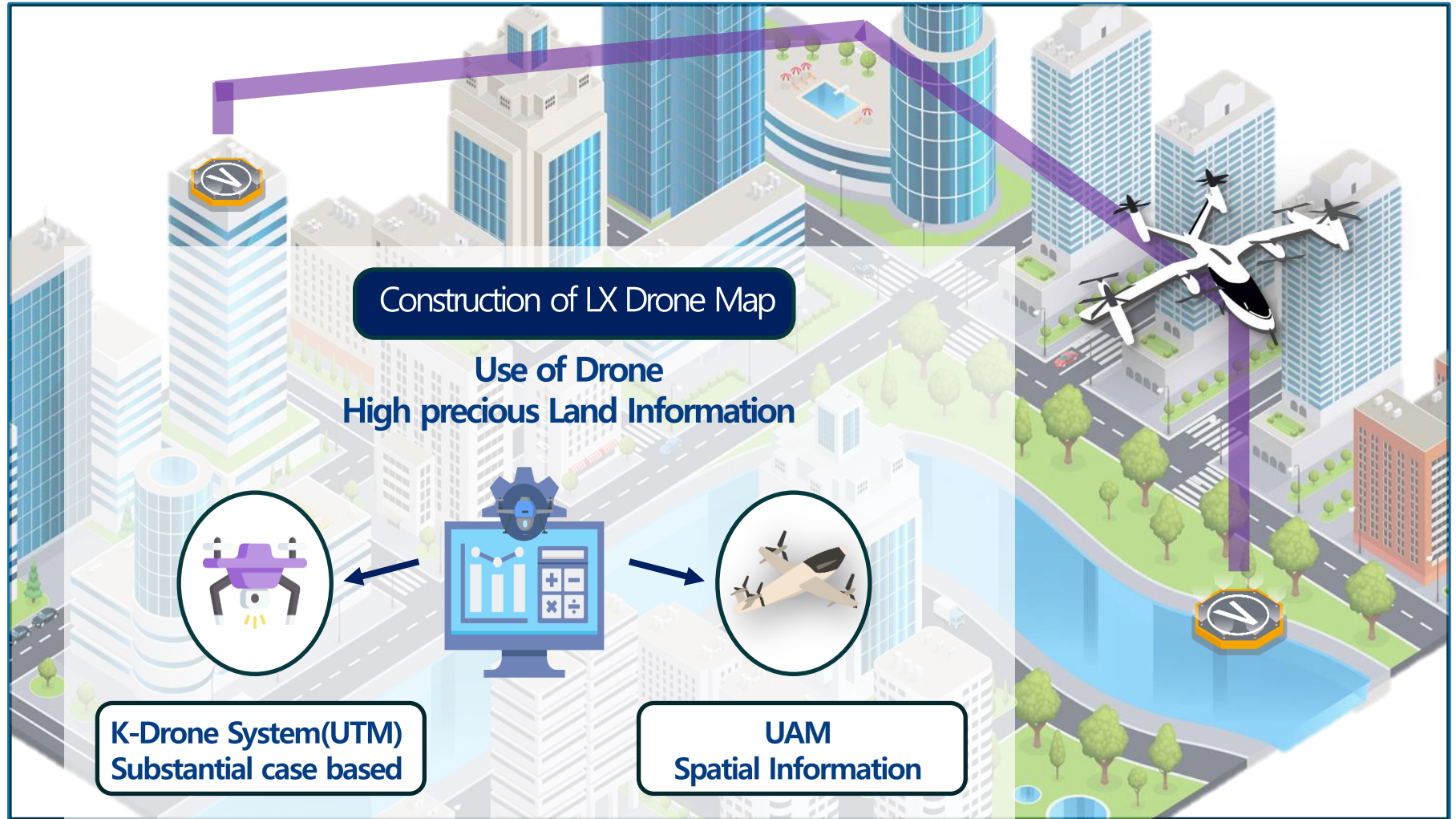
## Spatial Information in the Real



## Virtual Information

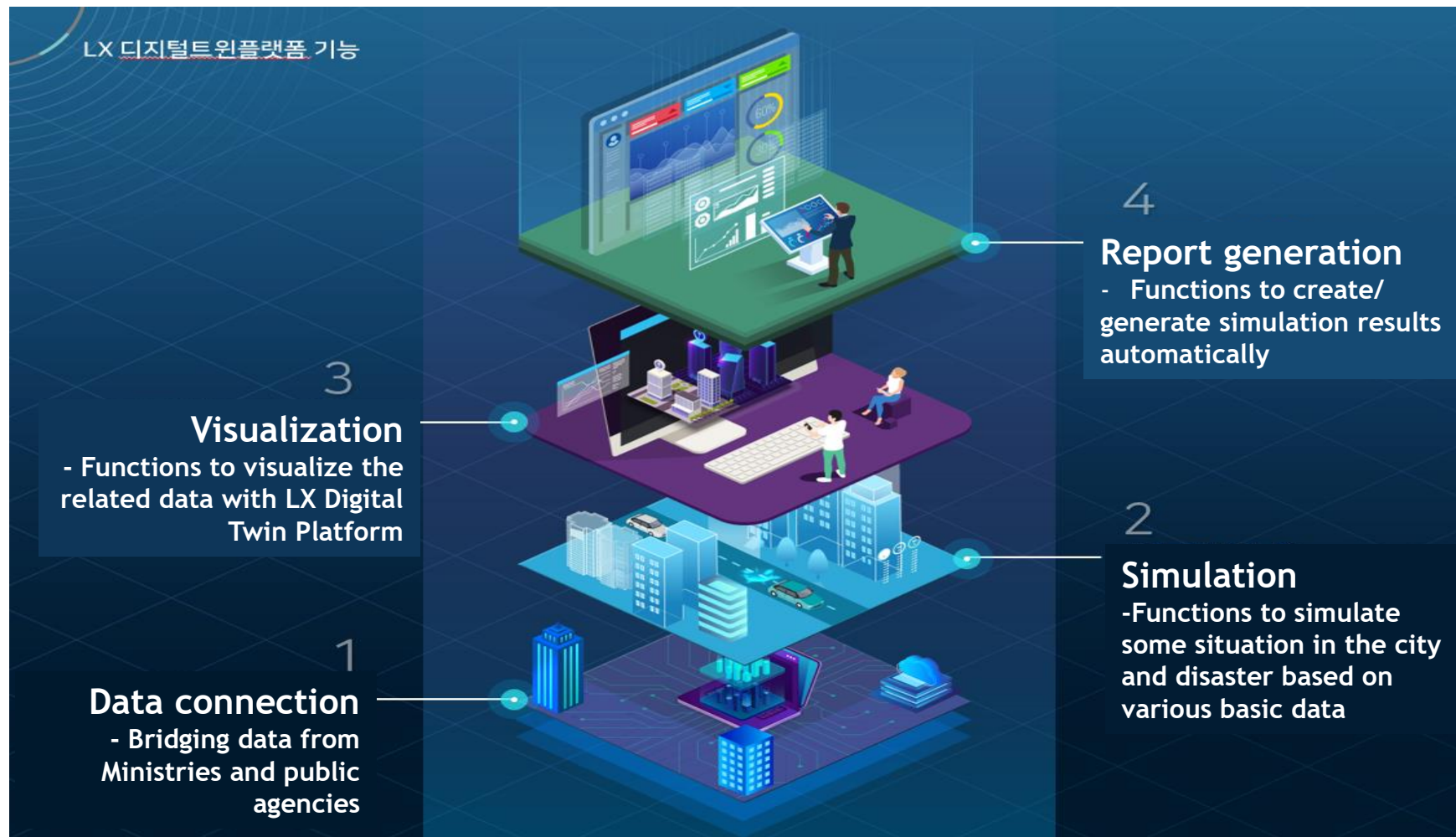


# Airspace data





# Functions of Platform





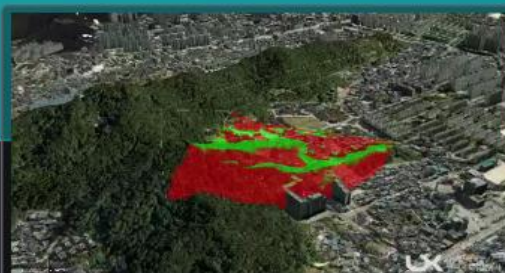
# Services

## Administrative Support

Development of 3 Dimensional Services for working-level staff in the field



Building Modeling Automation & Administrative support for approval



Cultural property/Asset Mgtm. & 3D based simulation



Smart Infrastructure Management

Efficient processing of administrative work

Minimization of Human Error

Efficient Budget utilization

Improved Urban Infra Management

# Services

## Disaster response Service

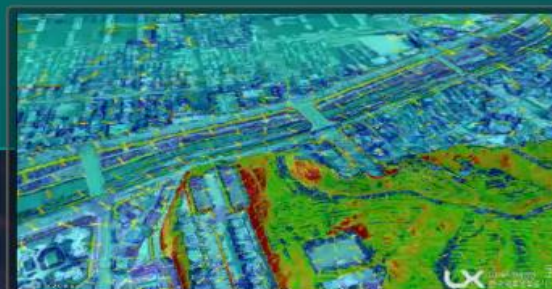
Support of Decision Making/plans/extent of damage through data collection



Monitoring service for  
quality of water in river



Monitoring service for  
pollutants spread in complex



Disaster  
Simulation

First response  
against  
Emergency

Minimal risks  
of disaster

Efficient  
planning for  
budget

Prevention of  
disaster risks

# Services

## Safe Life Service

3-dimensional service for safe use of public facilities



Digital Twin Building  
Monitoring Service



Navigation Service using  
AR for Indoor Spatial Information



Drone  
Simulation

Minimization of  
spread of  
Infectious  
disease

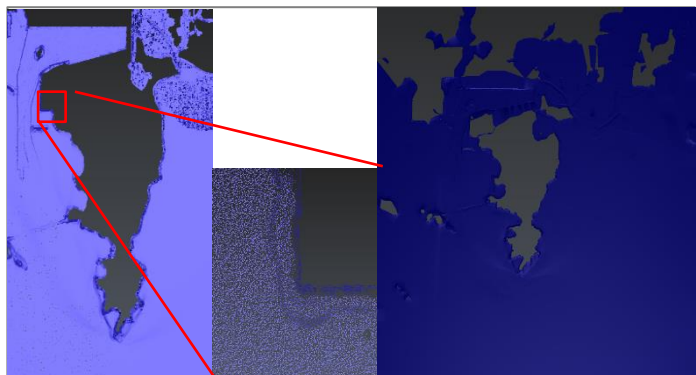
Provision of  
safe flight route

Improvement of  
convenience for  
People's life

Promotion of  
Bilateral  
Communication



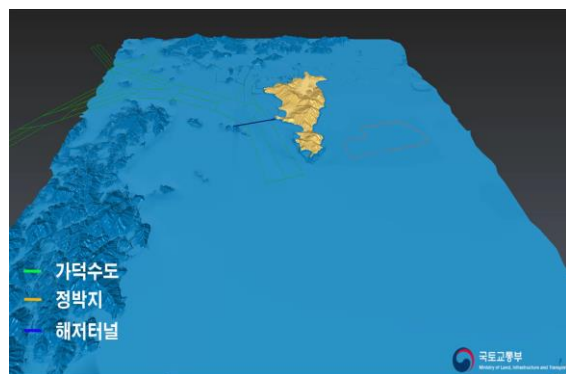
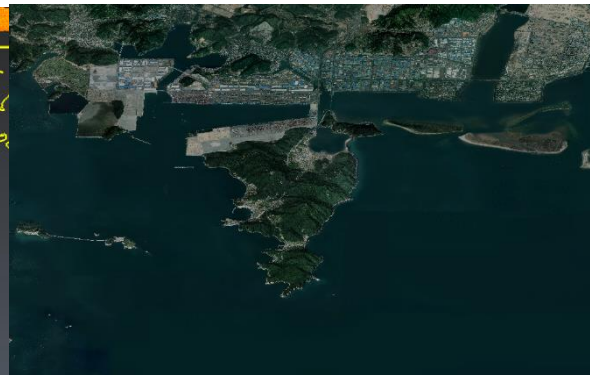
# Services (for construction of Airport)



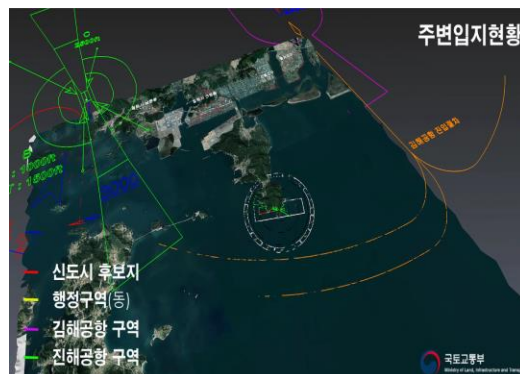
Creation of  
submarine 3D topographic data



Creation of  
3D topographic data



Location Analysis  
around Airport



Location Analysis  
around Airport



Earth-Volume  
Calculation

# Services (for Industrial Complex)

Provision of 3D Data Infra for the core procedures and enterprises' main products

## Technical Support & Streamlined work process



Support of 3D modeling  
for product processing &  
main products



Construction of 3D based  
Indoor Geospatial  
Information

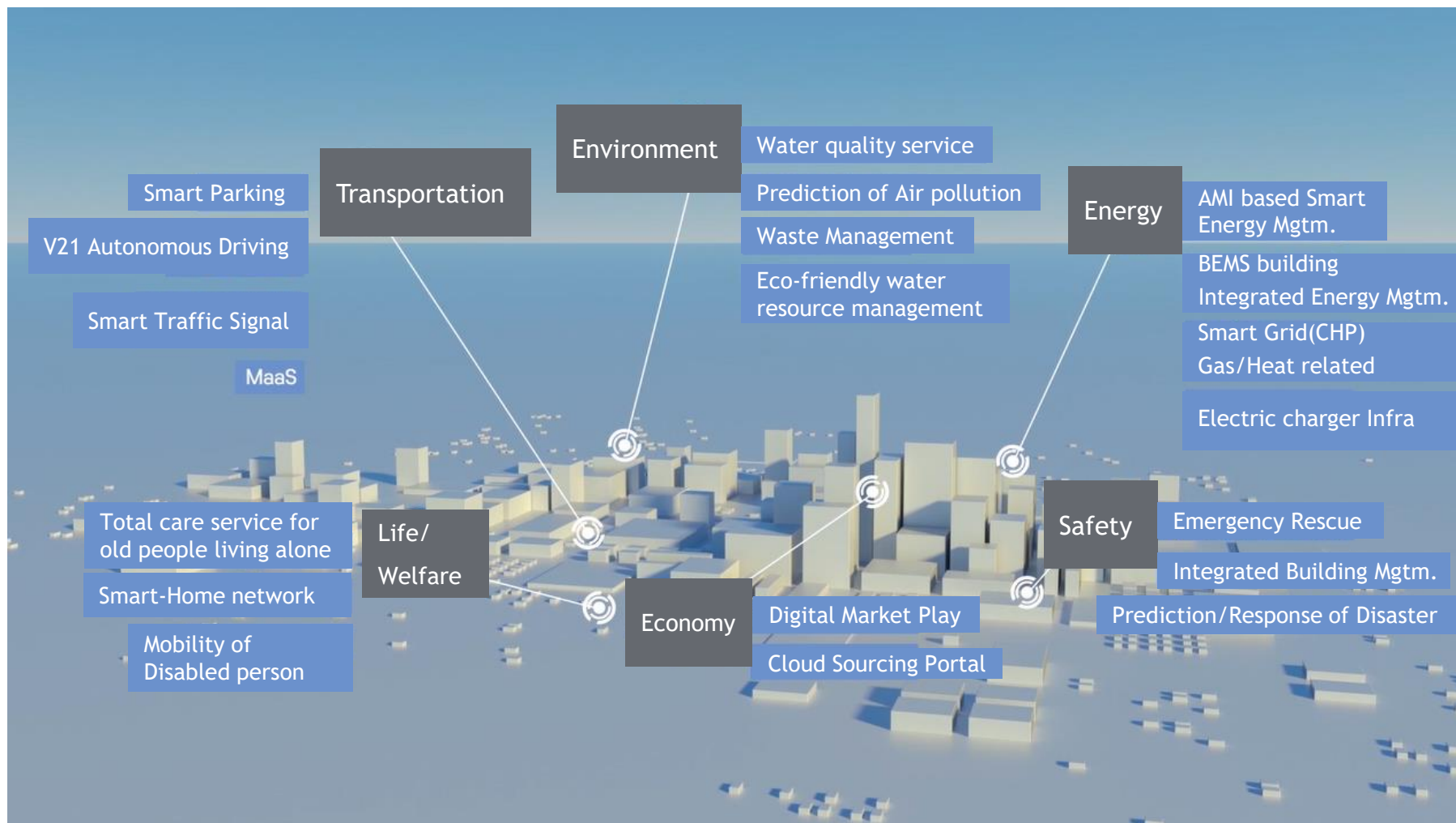


SW development to  
prevent wireless trespass



VR, AR, Metaverse  
Development of Contents  
to be promoted

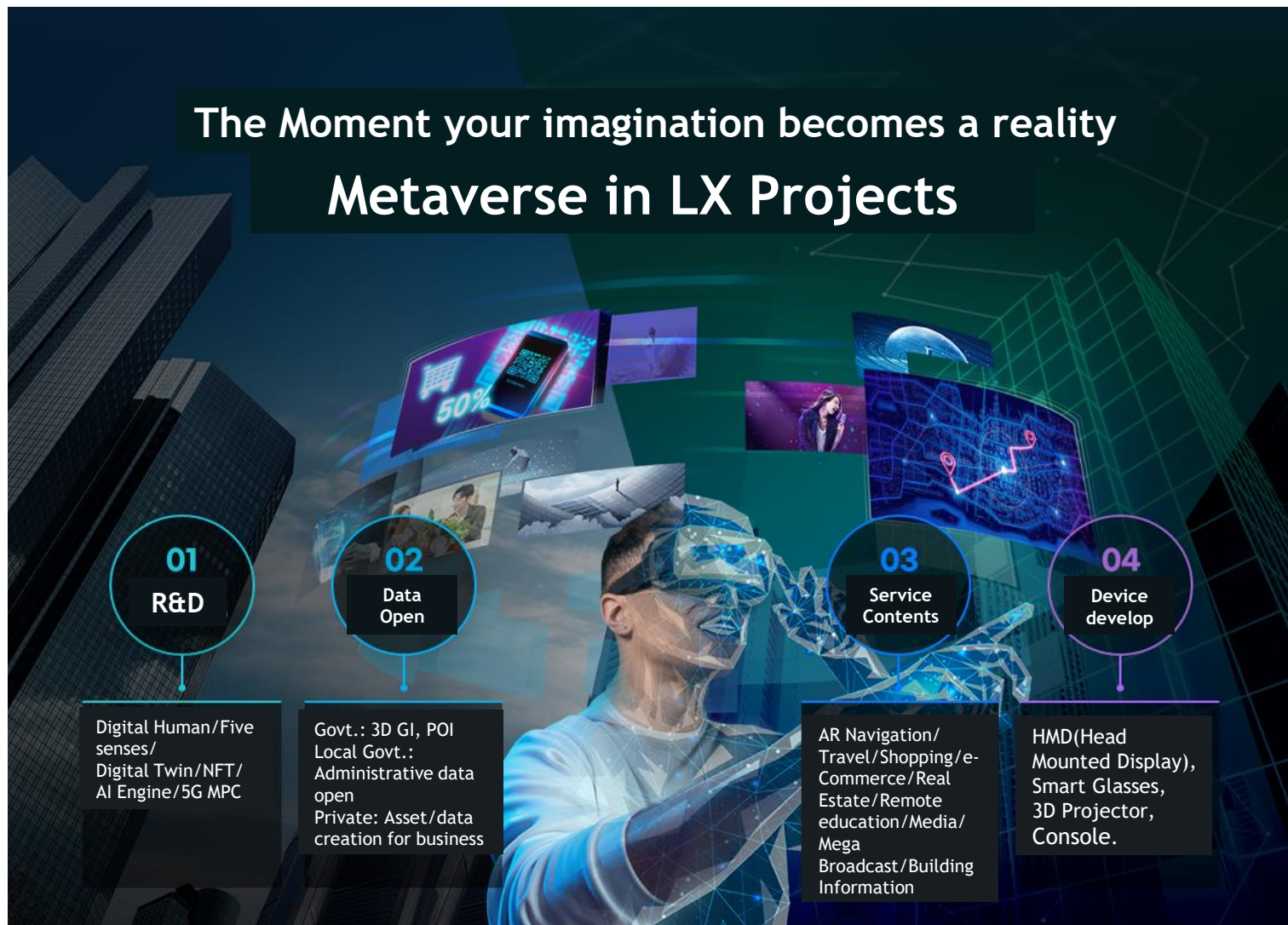
# Services (future application field)





# Services (Metaverse)

The Moment your imagination becomes a reality  
**Metaverse in LX Projects**





# The NEW CHAPTER...

*Beyond conventional ways*



# The Globe... Going forward, including all





# Why Korean cases spark interest?



[Brown-Bag Meeting in ADB, 2012]

- **Not Conceptual But Real**
  - everything happens in the real
- **Identification**
  - ICT-based geospatial information management
- **Government-led economic model**
  - strong central-govt. initiative
- **Emotional bond** and relatable sentiment in Asia
- **Goldilocks rule** (proper size)

# Further Collaboration btw LX and ADB



Why should WE cooperate with each other?

## The latest technology

Geospatial experience from various successful cases in Korea

## Public entity

Not profit but sharing experience & Knowledge

## Fit-for-Purpose

Under the similar culture, exactly know what they need



**THANK YOU**  
**감사합니다**



**Dr. CHOI, Songwook**  
**Chief Executive**  
**Director for Spatial**  
**Information Division**

**ccsw4625@lx.or.kr**

