

The views expressed in this presentation are the views of the author/s and do not necessarily reflect the views or policies of the Asian Development Bank, or its Board of Governors, or the governments they represent. ADB does not guarantee the accuracy of the data included in this presentation and accepts no responsibility for any consequence of their use. The countries listed in this presentation do not imply any view on ADB's part as to sovereignty or independent status or necessarily conform to ADB's terminology.

ADB

East Asia Urban and Social Sector Division

27 October 2022

Stefan Rau
Senior Urban Development Specialist,
East Asia Department

BUSINESS
OPPORTUNITIES 

Current EASS Active Urban and Social Sector Projects

17 Active EASS projects (see list next page)

3 projects recently approved (PRC):

- Loan 4218-PRC: Guangxi Wuzhou Health and Age-Friendly City Development Program
- Loan 4219/4220-PRC: Shandong West Jining Water Supply and Drainage Integration Program
- Loan 4224-PRC: Strengthening Public Health Institutions Project



Current EASS Active Urban and Social Sector Projects

Loan/Grant	Project Name
3098/3099/G0380-MON	Ulaanbaatar Urban Services and Ger Areas Development Investment Program - Tranches 1, 2, 3
3022-PRC	Chongqing Urban-Rural Infrastructure Development Demonstration II Project
3215-PRC	Guangxi Baise Vocational Education Development
3281-PRC	Jiangxi Pingxiang Integrated Rural-Urban Infrastructure Development
3694/3695/8348/G0594/G0595-MON	Ulaanbaatar Green Affordable Housing and Resilient Urban Renewal Sector Project
3565-PRC	(RBL) Guangxi Modern Technical and Vocational Education and Training Development Program
3506-PRC	(RBL) Public-Private Partnerships Demonstration Program to Transform Delivery of Elderly Care Services in Yichang, Hubei
3897-PRC	Chongqing Innovation and Human Capital Development Project
3819-PRC	Demonstration of Guangxi Elderly Care and Healthcare Integration and PPP Project
4140-PRC	Guangxi Hezhou Environment Restoration and Sustainable Development Project
G9208-MON	Support for Inclusive Education Project
4101-PRC	Public Service Sector Public-Private Partnership Promotion and Elderly Care Demonstration Project
4051/4052-MON	Second Shock-Responsive Social Protection Project
4068/4069/8399-MON	APVAX Support for COVID-19 Vaccine Delivery in Mongolia
G9218-MON	Strengthening Rapid Epidemic Response Capacity of Health Systems in Mongolia

Current Active Urban and Social Sector Projects (PRC)

Water and Other Urban Infrastructure and Services

3022-PRC	Chongqing Urban-Rural Infrastructure Development Demonstration II	EASS	150.000
3114-PRC	Guangdong Chaonan Water Resources Development and Protection Demonstration	PRCM	100.000
3202-PRC	Gansu Baiyin Integrated Urban Development	PRCM	100.000
3211-PRC	Jilin Urban Development	PRCM	150.000
3263-PRC	Xinjiang Tacheng Border Cities and Counties Development	PRCM	150.000
3281-PRC	Jiangxi Pingxiang Integrated Rural-Urban Infrastructure Development	EASS	150.000
3443-PRC	Qinghai Haidong Urban-Rural Eco Development	PRCM	150.000
3568-PRC	Xinjiang Changji Integrated Urban-Rural Infrastructure Demonstration	PRCM	150.000
3712-PRC	Hunan Xiangjiang River Watershed Existing Solid Waste Comprehensive Treatment	PRCM	150.000
3759-PRC	Yunnan Lincang Border Economic Cooperation Zone Development	PRCM	250.000
3766-PRC	Sichuan Ziyang Inclusive Green Development	EAER	200.000
3876-PRC	Jilin Yanji Low-Carbon Climate-Resilient Healthy City	EASS	133.341

Current Active Urban and Social Sector Projects

Agriculture, Natural Resources and Rural Development

3168-PRC	Hubei Huanggang Urban Environment Improvement	PRCM	100.000
3613-PRC	Heilongjiang Green Urban and Economic Revitalization	EASS	301.711
3827-PRC	Heilongjiang Green Urban and Economic Revitalization - Additional Financing	EASS	153.092
4140-PRC	Guangxi Hezhou Environment Restoration And Sustainable Development	EASS	95.409

Public Sector Management

4051/4052-MON	Second Shock-Responsive Social Protection Project	EASS	73.000
---------------	---	------	--------



Current Active Urban and Social Sector Projects (PRC)

Education

3565-PRC	Guangxi Modern Technical and Vocational Education and Training Development Program	EASS	250.000
3897-PRC	Chongqing Innovation and Human Capital Development	EASS	204.040
3991-PRC	Jiangxi Shangrao Early Childhood Education Demonstration Program	EASS	100.000
4073-PRC	Shaanxi Xi'An Preschool Education Development Program	EASS	142.573

Health

3506-PRC	Public-Private Partnerships Demonstration Program to Transform Delivery of Elderly Care Services in Yichang, Hubei	EASS	50.000
3536-PRC	Hebei Elderly Care Development	PRCM	100.000
3767-PRC	Hubei Yichang Comprehensive Elderly Care Demonstration	EASS	150.000
3819-PRC	Demonstration of Guangxi Elderly Care and Health Care Integration and Public-Private Partnership	EASS	100.000
4101-PRC	Public Service Sector Public-Private Partnership Promotion And Elderly Care Demonstration	EASS	142.369



Procurement in EASS Projects – Selected Packages

Loan/Grant Approval No.	Package No.	Contract Description	Contract Nature	Cost Estimates (USD)
L3947-MON	T3-CS01	Institutional Development and Capacity Building for Subcenter Development	Consulting	1,626,000
L3525-MON	DAHP	Dambadarjaa heating plant	Plant	16,200,000
L3946-MON	SHRDH14	Roads and associated infrastructure in Sharkhad subcenter (Phase 2)	Works	11,916,338
L3946-MON	TRDH11	Roads, heating network, and associated infrastructure in Tolgoit subcenter (Phase 1)	Works	11,079,951
L3946-MON	TRDH14	Roads, heating network, and associated infrastructure in Tolgoit subcenter (Phase 2)	Works	11,127,317
L3946-MON	SHEC	Electricity and telecommunication network in Sharkhad subcenter	Works	5,137,790
L3897-PRC	KJ-S03	Cost engineering for CUST subproject	Consultant	1,113,000
L3897-PRC	DJ-CW01	Construction of buildings for returning migrants' entrepreneurship and employment (Stage 1)	Civil Works	23,354,100
L3897-PRC	SX-CW01	Smart agriculture innovation and development practice platform (Smart Hill Machinery Research and Extension Center, Agricultural economic e-commerce research and innovation center, Intelligent agricultural information sharing center)	Civil Works	12,913,460
L3897-PRC	KJ-CW01	Construction of Chongqing public safety education sharing base and safety science and technology innovation hub and innovation support center	Civil Works	16,467,500
L3819-PRC	GX-TCM3-CW1	Nanning Traditional Chinese Medicine Hospital–Elderly Care Institution–Construction of an elderly care facility with 350 beds–Main building and external works	Civil works	19,320,000
L3819-PRC	GX-SWI-CW1	Nanning Social Welfare Institute–Construction of an elderly care facility with 500 beds–Main building and external works	Civil works	17,640,000
L3819-PRC	GX-HZ1-CW1	Hezhou People's Hospital (site 1)–Construction of an elderly care facility with 400 beds–Main building and external works	Civil works	11,060,000
L4140-PRC	CS-06	Construction supervision for all works	Consulting	2,400,000
L4140-PRC	W-KDS-02	Mineral mining tailings collection, treatment, and disposal in landfill	Works	8,080,000
L4140-PRC	G-RH-01	Township/community clinic medical equipment	Goods	8,990,000
L4101-PRC	CW5	EC6 - Elderly care facility (demolition and reconstruction) - civil works, facades, water supply and drainage, electrical, HVAC, elevators, external works, interior decoration	Civil Works	6,372,000
L4101-PRC	CW10	Elderly care training facility (new construction), 13,000 square meters gross floor area - civil works, facades, water supply and drainage, electrical, HVAC, elevators, external works, interior decoration	Civil Works	8,225,000

EASS Pipeline Urban and Social Sector Projects

- MON 49430-006: Aimags and Soums Green Regional Investment Program (MFF, Tranche 1)
- MON 56211-001: Developing Elderly Care System and Services in Mongolia
- PRC: 51381-001 : Shanxi Changzhi Low-Carbon Climate-Resilient Circular Economy Transformation Project
- PRC 56309-001: Yangtze River Economic Belt Jiangxi Ecological Civilization and Circular Economy Program



EASS Urban Project Examples:

PRC: Guangxi Hezhou Environment Restoration and Sustainable Development Project

Objectives

- reduce pollution and improve environment of former mineral mining
- provide inclusive social services to the population
- strengthen institutions to make living area green, inclusive, healthy, and sustainable

Financing plan

- Total project: €197.45 million
- Government: €112.41 million
- ADB: €85.04 million

Outcome

Kedashan's environment and Pinggui's health services improved

Outputs

1. nature-friendly measures to reduce pollution in the Kedashan former mineral mining area implemented
2. institutional mechanisms, skills capacities, and facilities in health and elderly care strengthened
3. green and health care-related skills development institutions developed

EASS Urban Project Examples:

PRC: Guangxi Hezhou Environment Restoration and Sustainable Development Project

For international bidding

G-WH-02 Pinggui Workers' Hospital medical equipment (4 lots)	32,680,000 (total)
--	--------------------

For knowledge inputs (consulting services)

CS-07 NBS approach for environmental restoration and policy framework	250,000
CS-08 Pinggui comprehensive public health-care system study and design	450,000
CS-09 Pinggui Integrated Health & Elderly Care Center operation study, capacity dev.	350,000

Major works and goods (national OCB)

W-WH-01 Pinggui Workers' Hospital works and installation engineering	71,000,000
W-KDS-01 Mineral mining site environment and surface water restoration	9,590,000
W-KDS-02 Mineral mining tailings collection, treatment, and disposal in landfill	8,080,000
W-HE-01 Pinggui Integrated Health, Elderly Care Center building works & installation	5,170,000
G-RH-01 Township/community clinic medical equipment	8,990,000

EASS Urban Project Examples:

PRC: Shandong West Jining Water Supply and Drainage Integration Program (Sector Development Program – SDP)

Output 1: Water sector strategies and operations strengthened (PBL)

- Create the policy setting for IWMP
- Progressively implement integrated administrative functions
- Improve the efficiency and sustainability of state-owned water utility operations
- Develop an environment conducive to sustainable financing.

Output 2: Sustainable water supply with diverse water sources and smart technology established

- Enhanced water treatment and supply of groundwater and surface water
- Sustainably diversify water sources, including use of nature-based water treatment processes and approaches
- Apply innovative and smart components and sensors for optimizing water resource production, supply and quality monitoring

Output 3: Wastewater services expanded and improved with smart technology

- Improve sewage treatment and coverage
- Integrated wastewater management including smart systems

Output 4: Institutional and program management capacity enhanced

- Comprehensive program of institutional capacity building and skills development

EASS Urban Project Examples: PRC: Shandong West Jining Water Supply and Drainage Integration Program

Program Financing Plan and Development Financing Needs

Source	Amount ^a (€ million)	Share of Total (%)
Asian Development Bank	83.37	46.93
Ordinary capital resources (policy-based loan)	23.34	13.14
Ordinary capital resources (project loan)	60.03	33.79
Jiaxiang County Government	94.28	53.07
Total	177.65	100.00

^aUS Dollar Equivalent:

ADB \$100.0 million = \$28.0 million (PBL) ; \$72.0 million (Project Loan) ; Jiaxiang County Government = \$113.09 million

Source: ADB estimates.



EASS Urban Project Examples:

PRC: Shandong West Jining Water Supply and Drainage Integration Program

Key Packages for Procurement

WS-C01	Civil works for reservoir and wetland	26,536,396	OCB/AN	Q4/2022
WS-C04	Pipe provision and installation for distribution pipelines Jiabei New District	6,758,479	OCB/AN	Q4/2022
WW-C05	Civil works for the river rehabilitation -Donglai River	888,981	OCB/AN	Q4/2022
CS-01	Project management and implementation support	1,100	FBS	Q1/2023
CS04C	Integrated water management technical advisory specialist	111,654	ICS	Q1/2023
CS-04a1	International integrated urban water management specialist and lead workshop facilitator	30,615	ICS	Awarded
CS-04a2	International integrated water resources management specialist, project manager, and technical coordinator	30,615	ICS	Awarded

EASS Social Project Examples:

PRC: Strengthening Public Health Institutions Building Project

Physical investments: €266.2 Million

- Detailed engineering design, site preparation and construction of public health facilities (hospitals) in Fangchenggang, Guiyang and Yan'an
- Upgrading of hospital laboratory facilities and medical equipment and supplies
- Operation and maintenance arrangements based on modernized guidelines for the rehabilitated public health facilities, including development of gender policy on employment targets for women and clinical protocols review for gender equality
- Piloting of innovative technology for emergency response in project provinces

Non-physical investments: €295.5 Million

- Preparation of guidelines and standards for disease control and infection prevention and control for health facilities and laboratory biosecurity
- Trainings and simulation exercises with different sectors for coordinated pandemic response, including formulation of gender-responsive emergency preparedness
- Consultations with development partners, including the private sector to plan for the conduct of scientific research on priority public health issues
- Establishment of regional platform for knowledge sharing, including promotion of healthy lifestyles and disease prevention



EASS Social Project Examples:

PRC: Strengthening Public Health Institutions Building Project

Fangchenggang Traditional Chinese Medicine Hospital

- Class III A hospital. Specialisms: integrated medical and health facilities. 592 bed facility, 732 employees, further 606 health technicians. Extended facilities will be established to the existing hospital.

Guiyang Traditional Chinese Medicine Hospital

- Class III hospital will serve the urban and rural areas of Guiyang City and nearby counties.
- The hospital will provide comprehensive health care services
- Provide services to nearly six million people in Guiyang City.
- Approximately 800 new staff

Yan'an University Affiliated Hospital

- Class III-A hospital with multiple specialties provides health services to almost 21 million people in Yan'an City.
- National clinical teaching and training demonstration center and a practice teaching base of the Ministry of Education but does not provide international public health training.
- The hospital has a current total bed capacity of 1,900 with 3,633 staff.

EASS Urban Project Examples:

Loan 4224-PRC: Strengthening Public Health Institutions Building Project

Major works and goods (national OCB)

Procurement package name	Estimated value (\$)
FC-CW-01 Main works of TCM health management center and ASEAN public health training base (including main structure, decoration, electrical, water supply and drainage, etc.)	47,203,400
GY-CW1 Hospital outpatient building, administrative office building and basement structural works (including earthwork and slope support, main structure, curtain wall, electrical, water supply and drainage, fire protection, weak current)	34,018,800
GY-CW2 Medical technology building, inpatient building and basement structural works (including earthwork and slope support, main structure, curtain wall, electrical, water supply and drainage, fire protection, weak current)	35,218,700
YA-P1.1-CW03 Women and Children's Branch: Reconstruction of the Rehabilitation and Health Building (excluding the intelligent information system)	28,900,000
GY-CG2 Guiyang TCM Hospital information system software procurement contract	8,168,800
GY-CG6 Medical equipment procurement contract 4- including radiology, acupuncture, hepatology, pharmacy, pathology department (frozen section, microscope, remote pathology scanner, etc.), laboratory equipment, COVID-19 emergency training equipment, etc.	6,836,800

EASS Urban and Social Project Examples: PRC: Guangxi Wuzhou Healthy and Age-Friendly City Development Program (Results-Based Lending - RBL)

Program Scope	Broader Government Program: Healthy Wuzhou 2030	RBL Program: time, geographic, and sector slice
Outcome	Better health, well-being, and people-oriented socioeconomic development achieved	Livability, age-friendliness, and social inclusion in Wuzhou's urban center improved
Key Outputs	<ol style="list-style-type: none"> 1. Improved health care services 2. Expanded health insurance 3. Healthy environments 4. Health industry development 5. Improved health security 	<ol style="list-style-type: none"> 1. Healthy and safe four-generation urban environments established 2. Integrated age-friendly services and facilities improved 3. Institutional development and capacity building promoted
Expenditure	\$47.52 billion, 2017–2030	\$1.37 billion, 2021–2025
Geographic coverage	Wuzhou Municipality (3 urban districts, 3 rural counties, 1 county-level city)	Wuzhou's urban center, 3 districts: Changzhou, Longxu, Wanxiu

EASS Urban and Social Project Examples: PRC: Guangxi Wuzhou Healthy and Age-Friendly City Development Program (Results-Based Lending - RBL)

Summary of Program Expenditure Framework, 2021–2025 (in 2021 prices)

Item	Amount (\$ million)	Share of Total (%)
A. Recurrent expenditure	165.01	12.02
1. Salaries and benefits	69.32	5.05
2. Administrative and maintenance expenses	80.22	5.84
3. Training and capacity building	15.26	1.11
4. Other	0.21	0.02
B. Capital expenditure	1,208.07	87.98
1. Equipment and materials	543.25	39.56
2. Building construction and upgrades	664.82	48.42
Total	1,373.08	100.00

Program Financing Plan

Source	Amount (\$ million)	Share of Total (%)
Government	1,273.08	92.72
Asian Development Bank		
Ordinary capital resources (regular loan)	100.00	7.28
Total	1,373.08	100.0

ADB Project: Jilin Yanji Low-Carbon Climate-Resilient Healthy City Project

Integrated Solution: Sustainable urban mobility, functional green spaces (sponge city), improved health



ADB Project: Jilin Yanji Low-Carbon Climate-Resilient Healthy City Project

Sponge City: Green Infrastructure Requires More Green Spaces and New Detailed Bioengineering Skills



Before

After



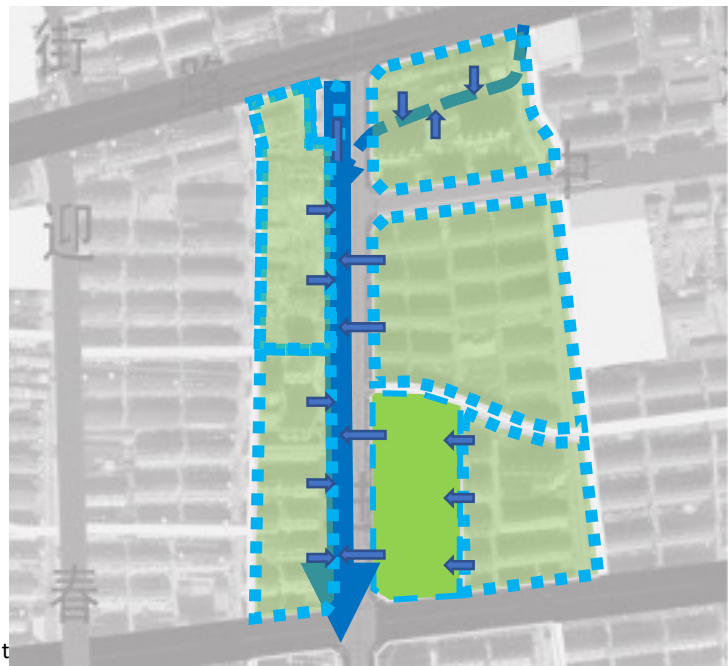
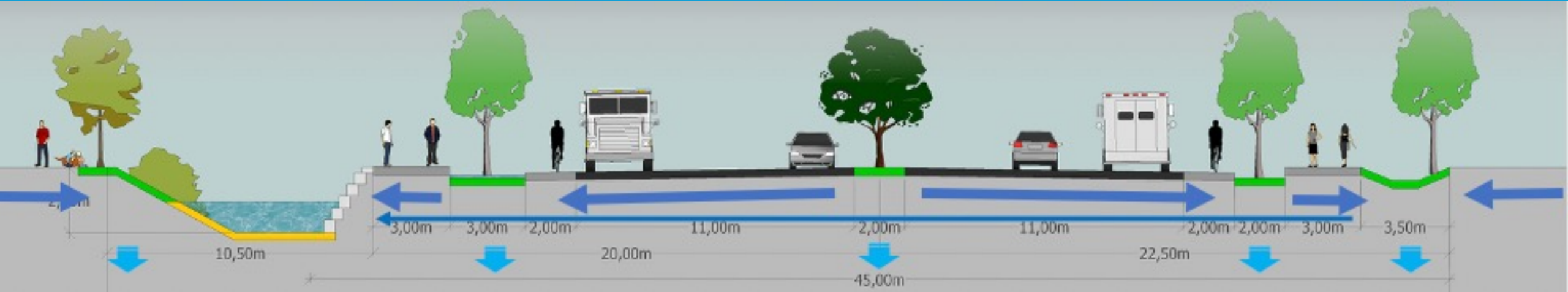
Before

After



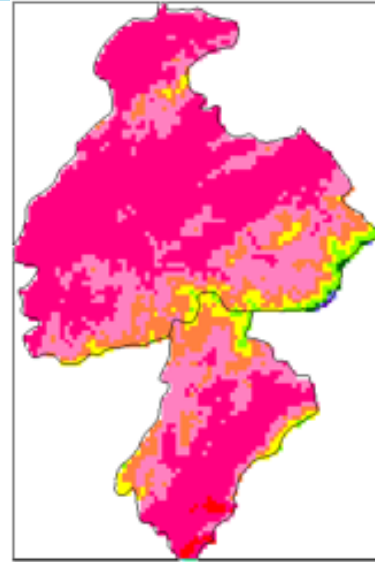
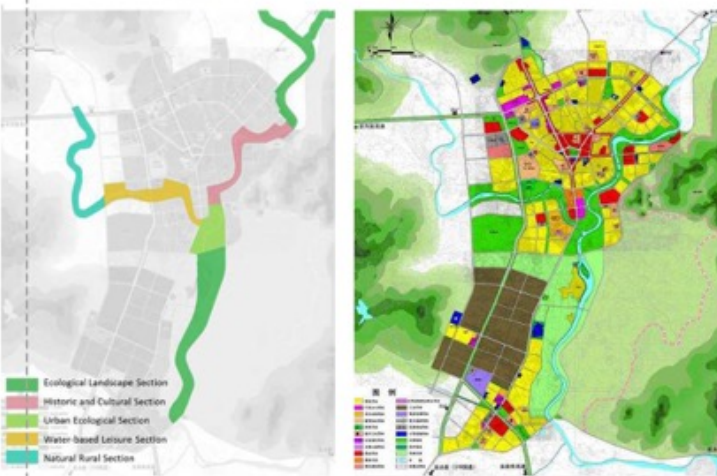
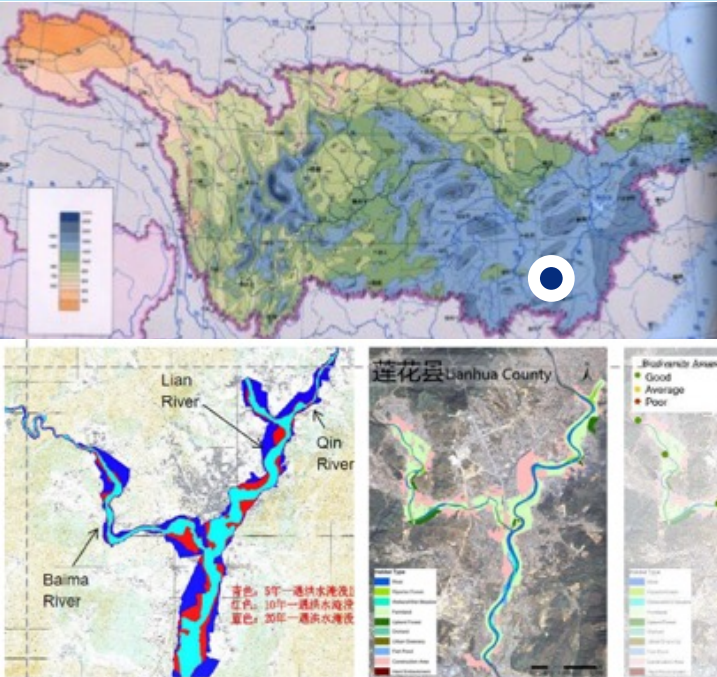
ADB Project: Jilin Yanji Low-Carbon Climate-Resilient Healthy City Project

Sponge City: Green Infrastructure Requires More Green Spaces and New Detailed Bioengineering Skills

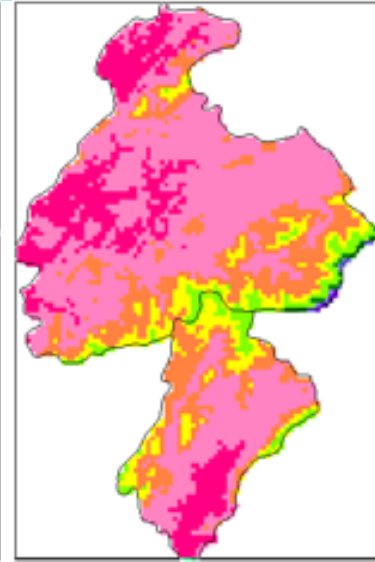


Jiangxi Pingxiang Integrated Rural-Urban Infrastructure Development Project

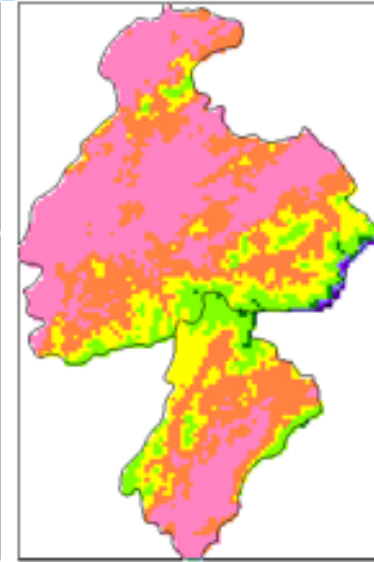
Analyze Climate Risks, Hydrological and Hydraulic Modelling, Develop Integrated Adaptation Options



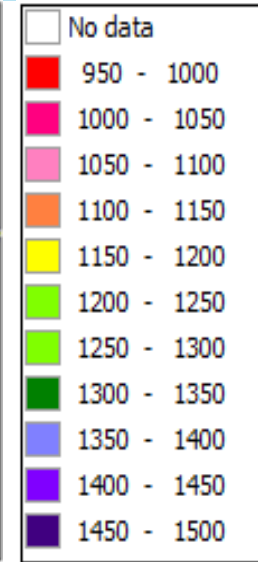
Baseline



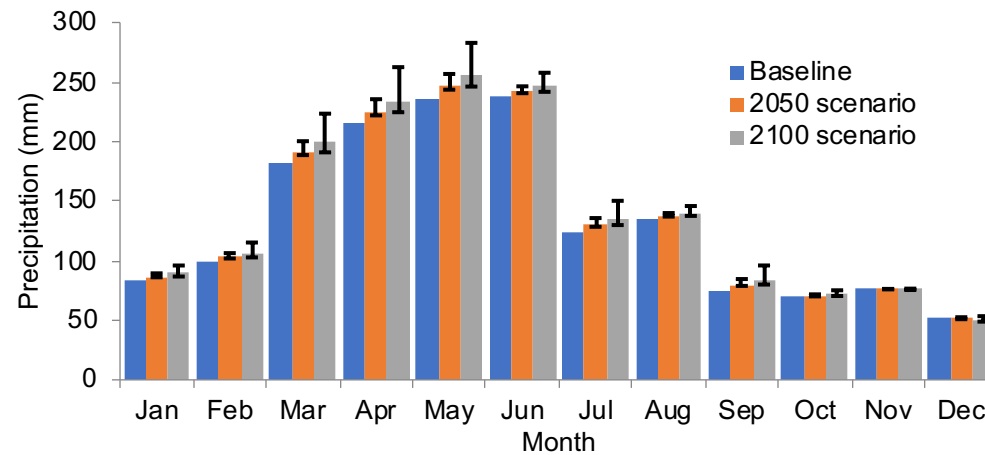
2050 Median scenario



2100 Median scenario

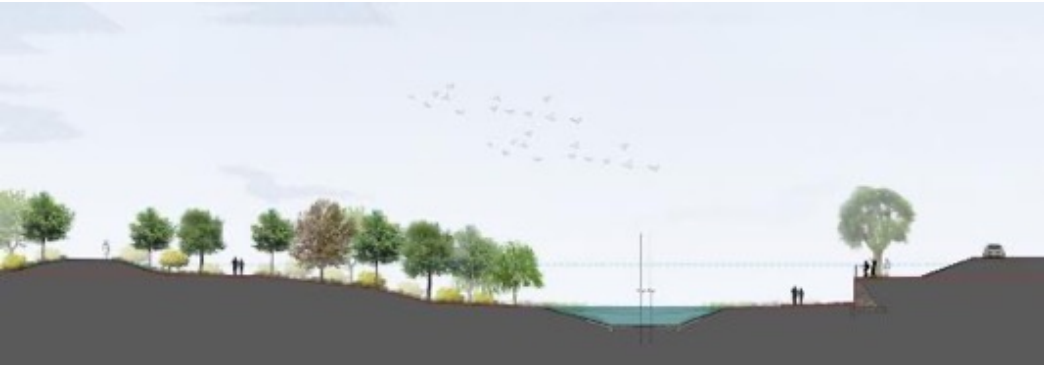


ADB CRVA PRECIPITATION RELATED CLIMATE VARIABLES AND FUTURE PROJECTIONS, HYDRAULIC MODELLING AND CALIBRATION USING RIVER GAUGES AND PAST EVENTS



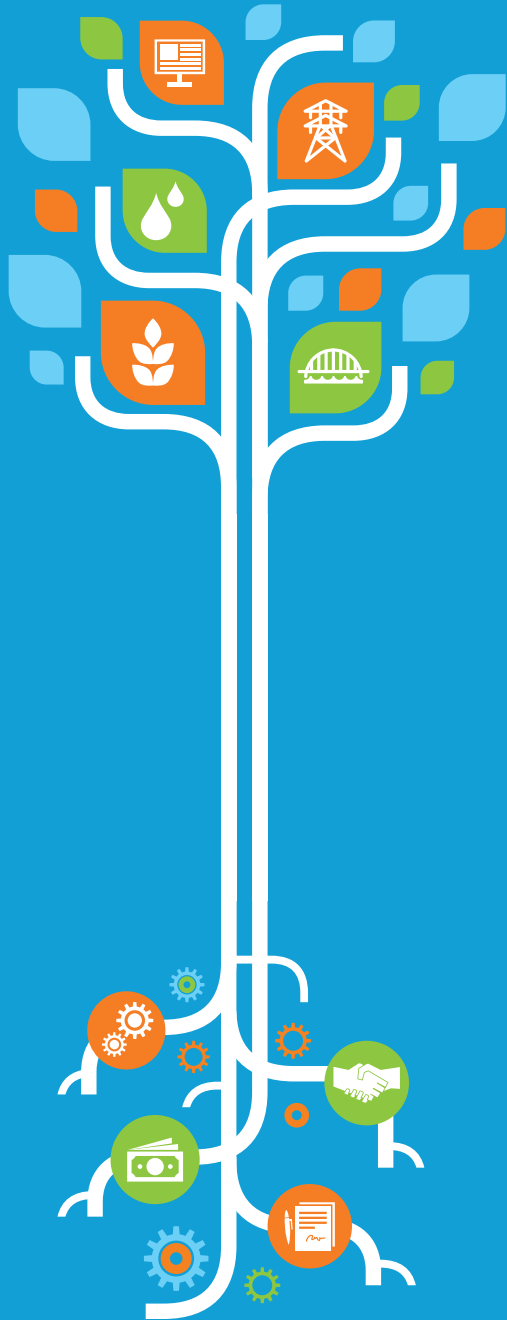
Jiangxi Pingxiang Integrated Rural-Urban Infrastructure Development Project

Sponge City: Green Infrastructure Requires New Skills in Bioengineering for River Works



- Preserve wetlands and large trees along the road and plant more trees along bank riparian tree belt;
- Replant shoreline aquatic plants
- Preserve existing forested areas





THANK YOU!

Stefan Rau

Senior Urban Development Specialist, EARD/EASS

srau@adb.org