

# Multi-Actor Partnership for Inclusive Energy Transition

**Shovana Maharjan**

**Programme Coordinator, Prakriti Resources Center**

**16 June 2022**

# Prakriti Resources Centre

Established in 2015, as non-governmental organization working for sustainable development and environmental justice in Nepal, focuses on:

- Development of a common platform for climate and development practitioners
- Policy Engagement
- Capacity Building
- Research and Knowledge sharing
- Partnership and networking



Climate Finance



Low Carbon Development



Resilience and Adaptation



Gender and Social Inclusion  
(Cross-Cutting Theme)



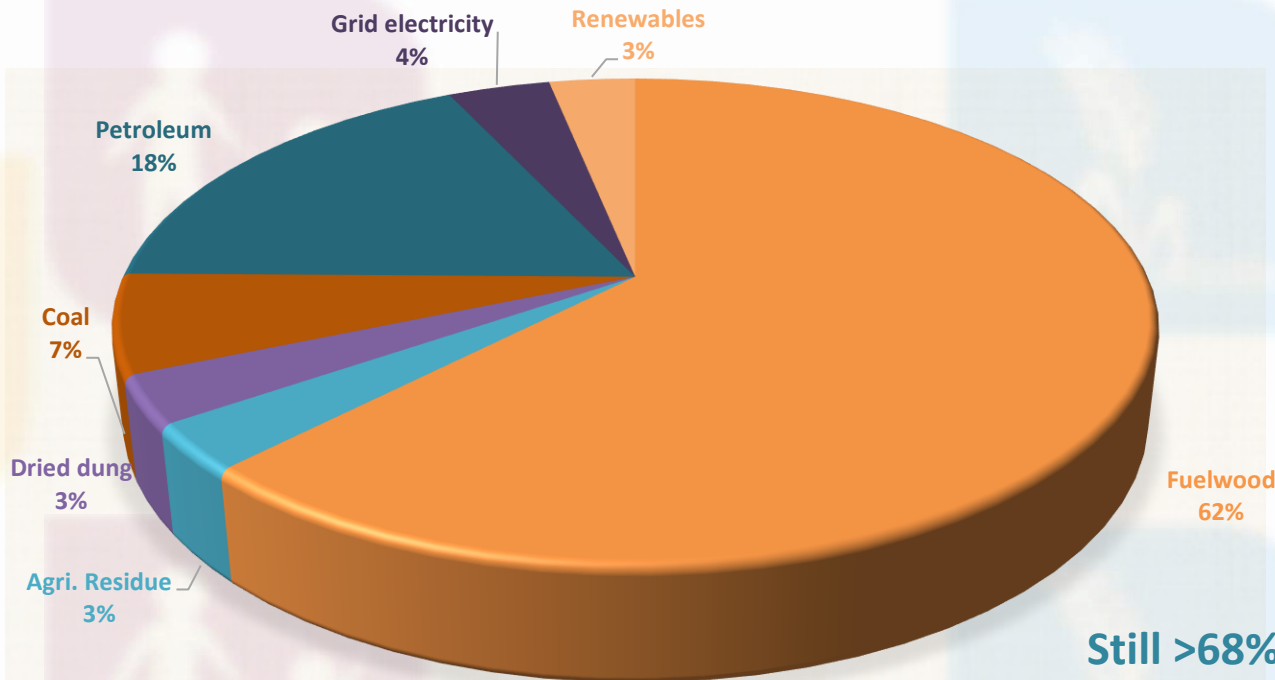
Governance (Cross-Cutting  
Theme)

# Table of Content

- Nepal's Energy Scenario
- Energy Ladder, Fuel Stacking and Energy Transition
- Energy Sector Priorities: NDC (2020)
- Multi-Actor Partnership (MAP) Platform for 100% Renewable Energy
- Objective
- Relevance of MAP
- MAP in Nepal
- Engagement of MAP
- Importance of MAP

# Nepal's Energy Scenario

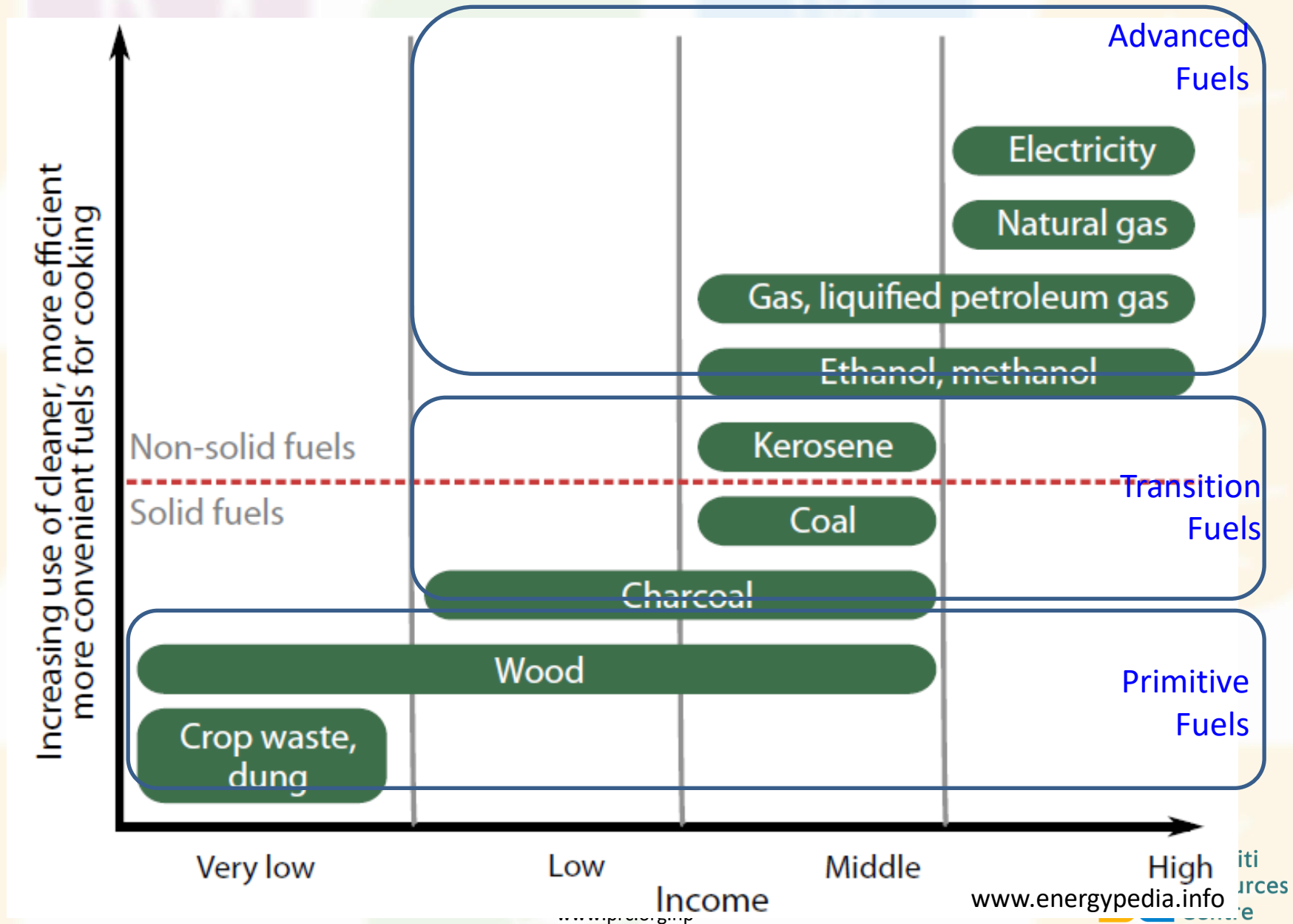
## ENERGY CONSUMPTION BY FUEL TYPE



Source: Ministry of Finance, 2021

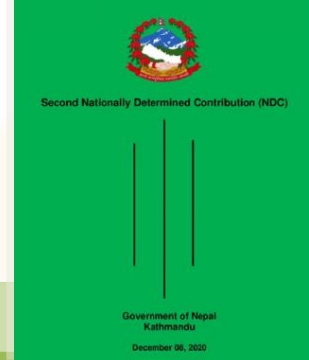
Still >68% of HHs using traditional biomass (firewood, agriculture residue, dried dung)

# Energy Ladder, Fuel Stacking and Energy Transition



# Energy Sector Priorities: NDC (2020)

## Net Zero Emission by 2045



### Energy



- 15,000 MW by 2030
  - 5,000 MW by 2030 (unconditional)
  - 5-10% will be generated from mini and micro-hydro power, solar, wind and bio-energy. (250 MW - 500 MW (unconditional) 750MW - 1,500 MW (conditional))
- By 2030, ensure 15% of the total energy demand is supplied from clean energy sources.

### Transport



#### By 2025,

- Sales increase by **25%** of all private passenger vehicles sale, including two wheelers
- Sales increase by **20%** of all four-wheeler public passenger vehicle sales

#### By 2030,

- Sales increase **90%** of all private passenger vehicle sales, including two-wheelers
- Sales increase by **60%** of all four-wheeler public passenger vehicle sales
- 200 km of the electric rail network

### Cooking



#### By 2025,

- install 500,000 improved cookstoves, specifically in rural areas
- install an additional 200000 household biogas plants and 500 large scale biogas plants (institutional/industrial/municipal/community)

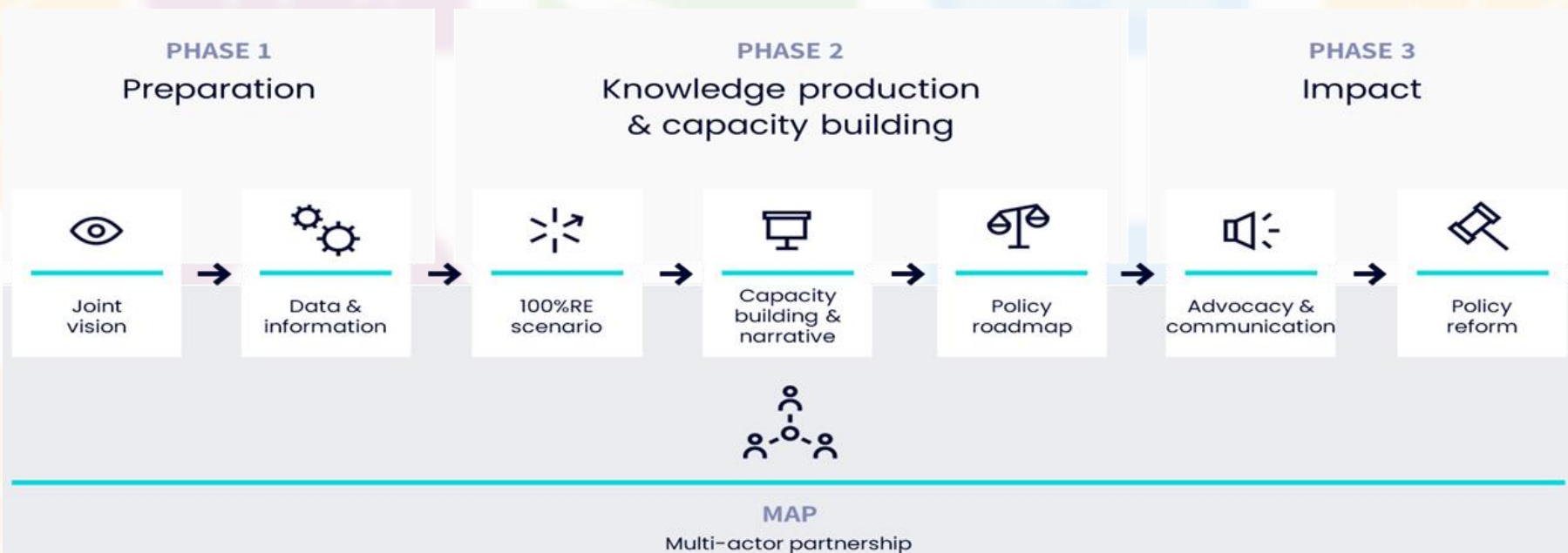
#### By 2030,

- ensure 25% of households use electric stoves as their primary mode of cooking

# Multi-Actor Partnership (MAP) for 100% Renewable Energy

100%RE  
multi-actor  
partnerships

- **Donor:** Federal Ministry for Economic Cooperation and Development (BMZ)
- **International partners:**
  - WWF Germany,
  - Bread for the World,
  - World Future Council
- **Project Timeline:** Three years, 2020 – 2022/23
- **Implementing Partners in Nepal:** WWF Nepal and PRC
- **Target countries:** Nepal, Vietnam, Uganda





# MAP for 100% RE Objective

- To develop a country pathways for a just transition to 100% Renewable Energy (RE)
- To conduct cutting-edge research on full-decarbonisation in target countries through an inclusive policy dialogue
- To develop a Technical scenarios for 100% RE for all by 2050
- To initiate the National advocacy campaigns which build public and political will to ensure ownership across levels.
- To supports a political dialogue on the enhancement of the country's Nationally Determined Contributions (NDCs).



# Relevance of MAP for Inclusive Energy Transition

To reach 100% RE

Process will be ramped up

Backed by opinion leaders to provide positive vision

Mechanism that develop mutually acceptable solutions and win-win situations

**Inclusive and Participatory process to facilitate policy dialogues**

Ownership over process and outcomes

Scientific knowledge and capacity building measures for local planning and implementation

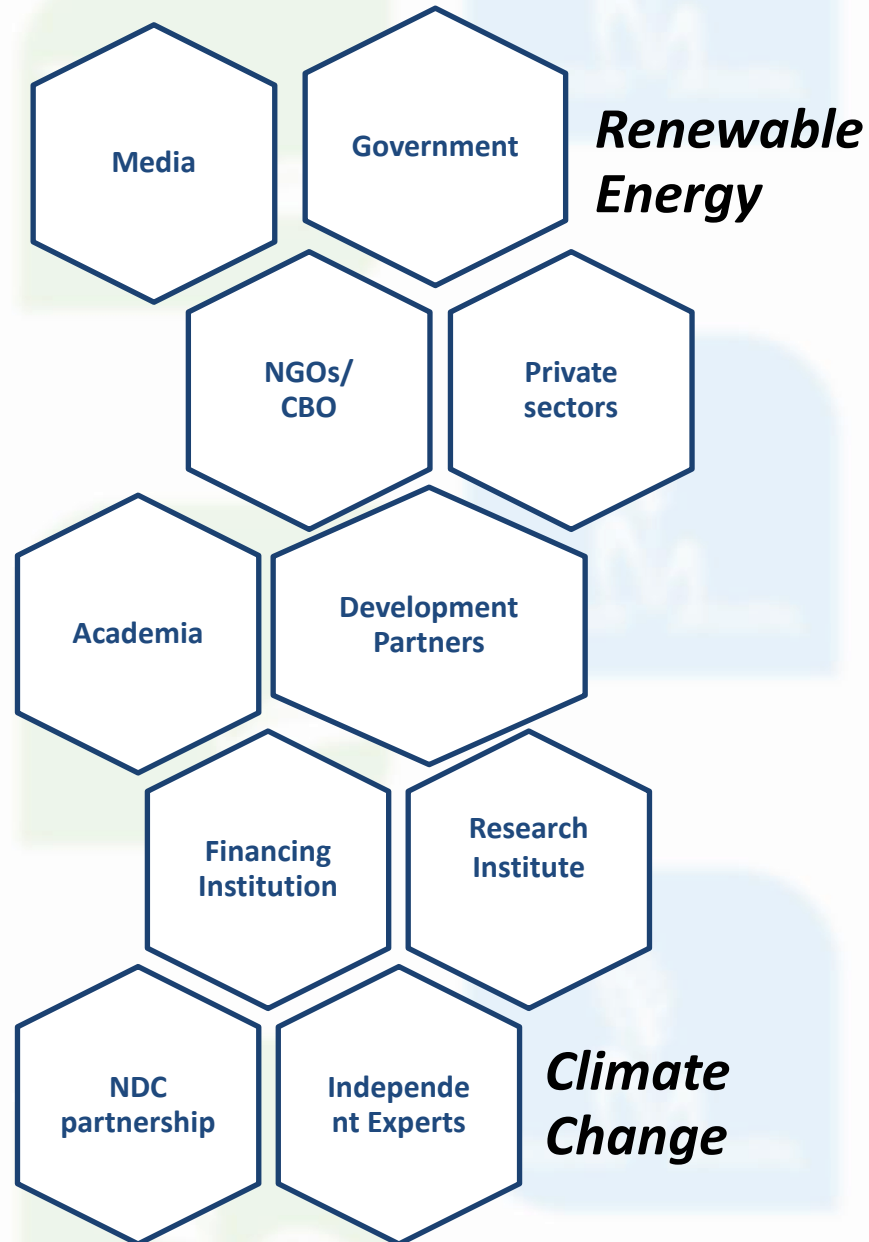
Inclusive Decision Making process during transition phase



PARTNERSHIP

# MAP 46 organization and individual experts

# MAP



# Engagement of MAP

- Develop joint vision of what 100% RE means for Nepal
- Support to develop policy roadmap that enables policy makers to improve robust RE policies backed by science, revise their existing RE strategy to be more ambitious and make long-term commitments
- Energy and climate change discourse
- Guidance in preparation of
  - Provincial Energy Strategy and Action Plan
  - Technical Scenario for 100% RE for Nepal
- Development of knowledge products on Energy related issues ([www.prc.org.np](http://www.prc.org.np))
- Mutual learning and sharing of experience



# Importance of MAP



Diverse experience sharing for Holistic Policy making



Bringing policy makers and practitioners together for discussion



Inclusion of socio-environment dimension in energy sector for dialogue and discourse



For effective decision making and improving accountability of all in the energy sector

# Thank you

For further information

Contact: Prakriti Resources Centre

Website: [www.prc.org.np](http://www.prc.org.np)