

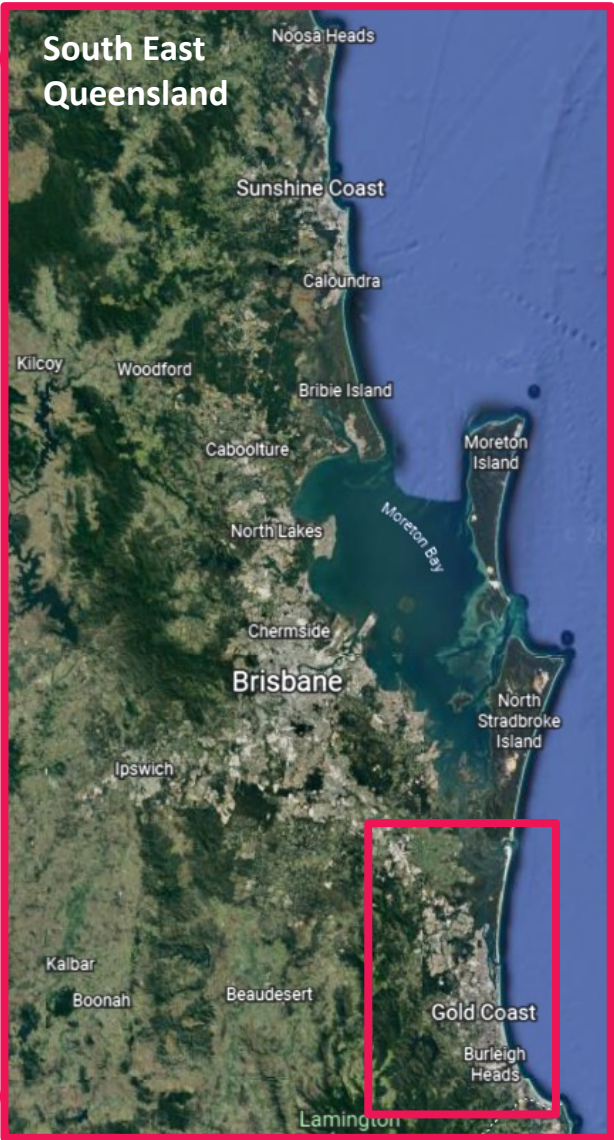
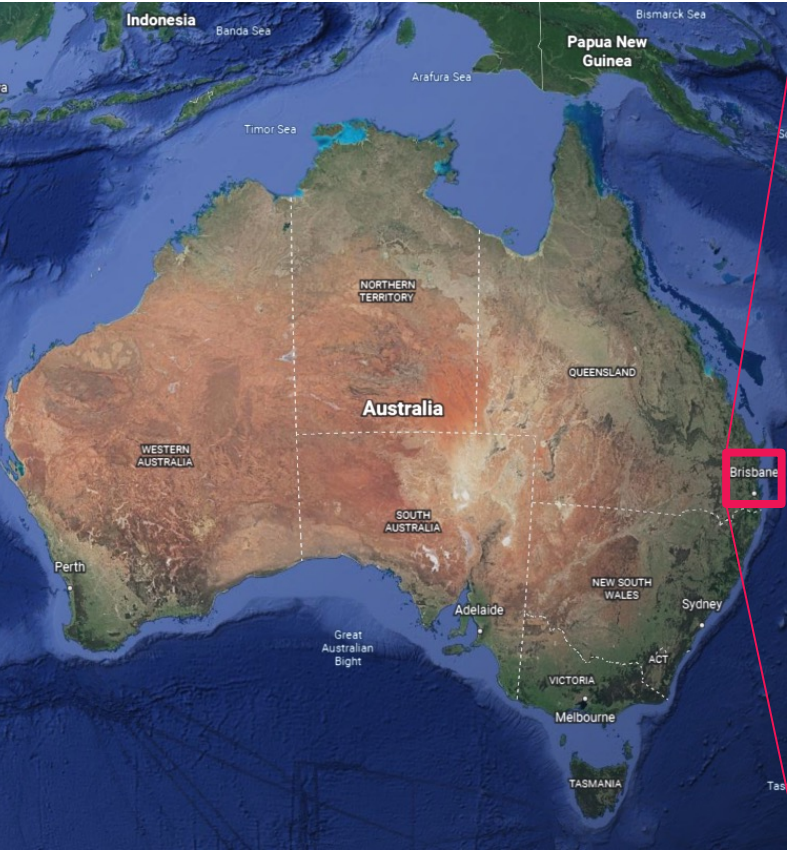
City Planning: A data driven approach to urban and strategic planning

June 2022

A78241257

CITY OF
GOLDCOAST.[™]

Context



Regional planning approach

South East Queensland Regional Plan



Gold Coast City Plan zone mapping



Local Government Infrastructure Plan

It is the **responsibility of local governments to provide trunk infrastructure** and the **responsibility of developers to contribute their share of its cost**



Water supply



Sewerage



Public parks and land for
community facilities



Transport



Stormwater



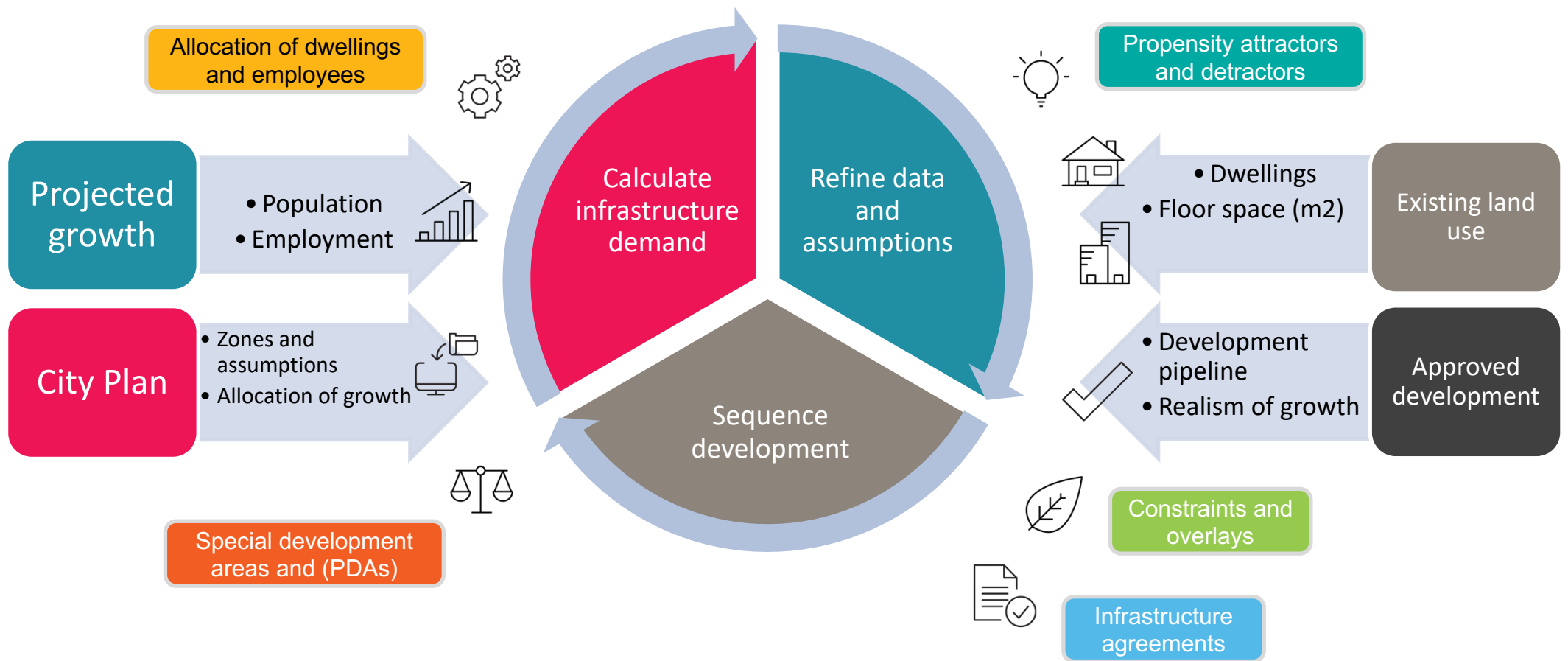
Growing
population and
new dwellings



New jobs and
increasing non-res
floorspace

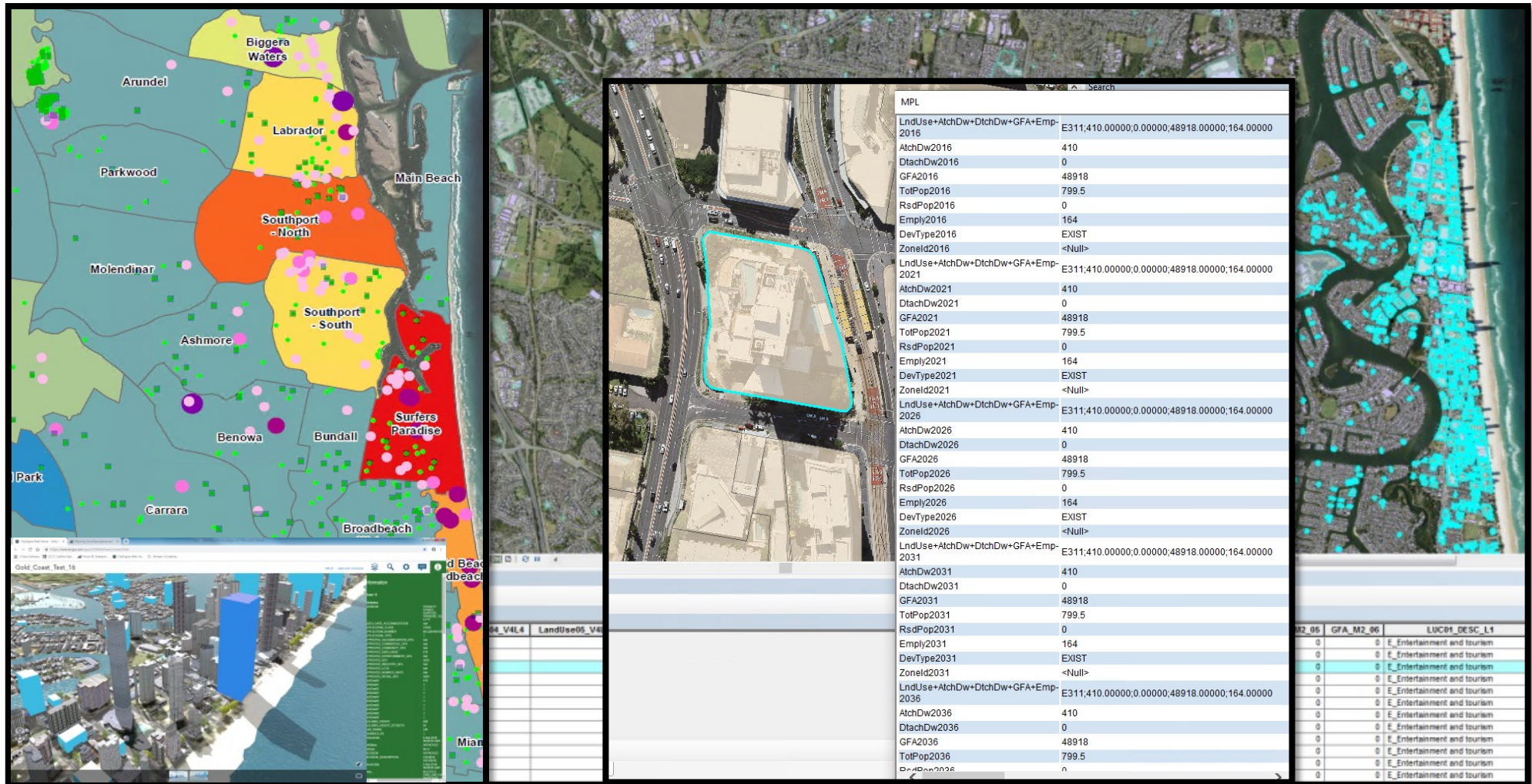
Planning and Urban Growth model (PUG)

Detailed modelling is required to determine the right amount of planned infrastructure at the right time in the future



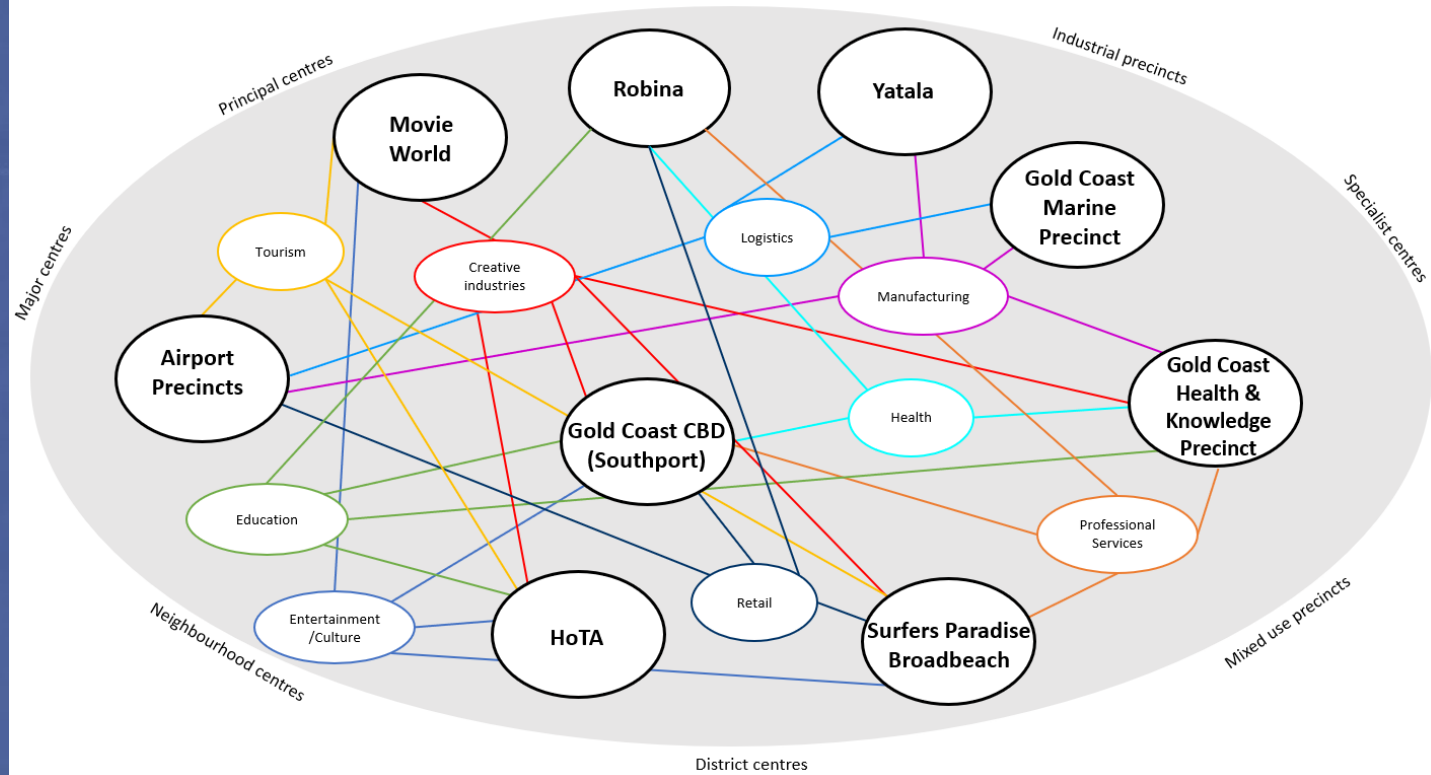
This includes updates to future **LGIPs** and **City Plan**

Planning and Urban Growth model (PUG)



- Detailed attributes for each lot in the city relating to existing and future development – Aggregated **stats, maps** and scenario analysis/ **visualisation**

Productive Gold Coast



Working from home - neighbourhood-scale effects



CITY OF
GOLDCOAST.TM