



World Vegetable Center

The views expressed in this material are the views of the author/s and do not necessarily reflect the views or policies of the Asian Development Bank, or its Board of Governors, or the governments they represent. ADB does not guarantee the accuracy of the data included in this presentation and accepts no responsibility for any consequence of their use. The countries listed in this presentation do not imply any view on ADB's part as to sovereignty or independent status or necessarily conform to ADB's terminology.

Asia-Pacific Rural Development and Food Security Forum 2022

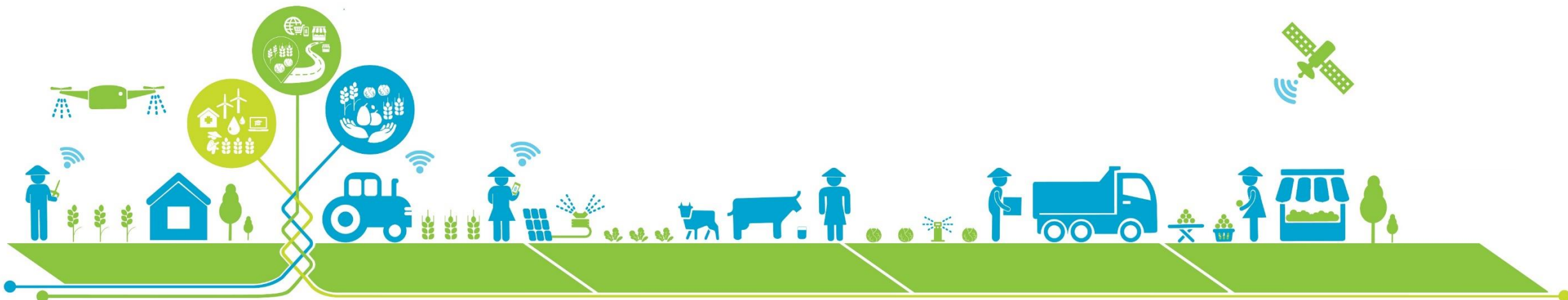
Battling Climate Change and Transforming Agri-food Systems

22-24 March 2022

Intersectoral approach to nutrition security: Thailand

Ladda Mo-suwan

Professor of Pediatrics, Prince of Songkla university



Thailand nutrition profile (2019)

Progress towards the global nutrition targets



Childhood stunting

● Some progress



Anaemia

● No progress or worsening



Low birth weight

● Some progress



Childhood overweight

● On course



Exclusive breastfeeding

● No progress or worsening



Childhood wasting

● No progress or worsening



Sodium intake, women and men

● Off course



Raised blood pressure, women

● Off course



Raised blood pressure, men

● Off course



Obesity, women

● Off course



Obesity, men

● Off course



Diabetes, women

● Off course

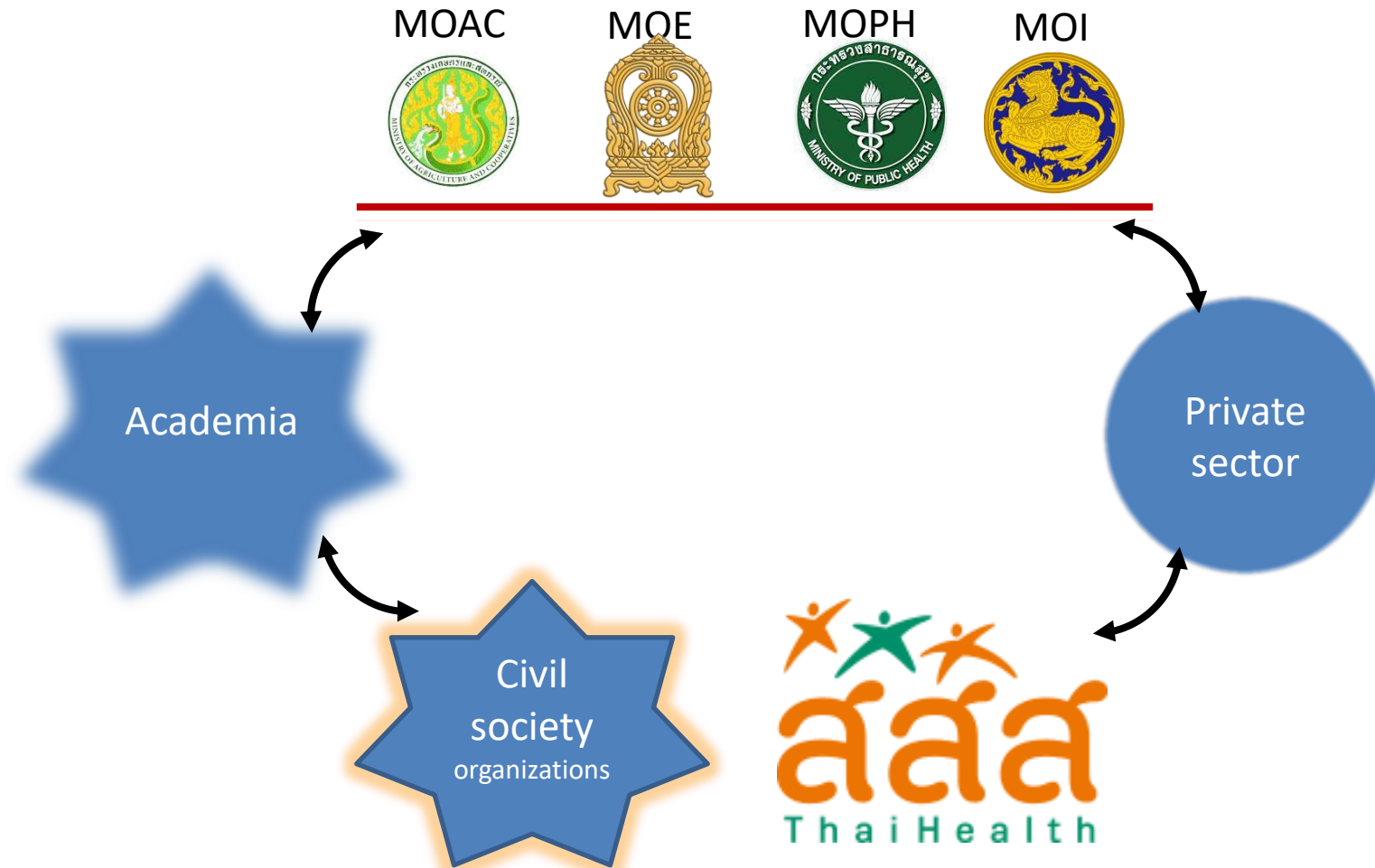


Diabetes, men

● Off course

Source: MICS 2019; Tufts University. Global Dietary Database. Published online 2019. Available at: <https://www.globaldietarydatabase.org/data-download>. (Global Nutrition Report. accessed 15 Mar 2021)

Thailand's approach to deal with nutrition challenges

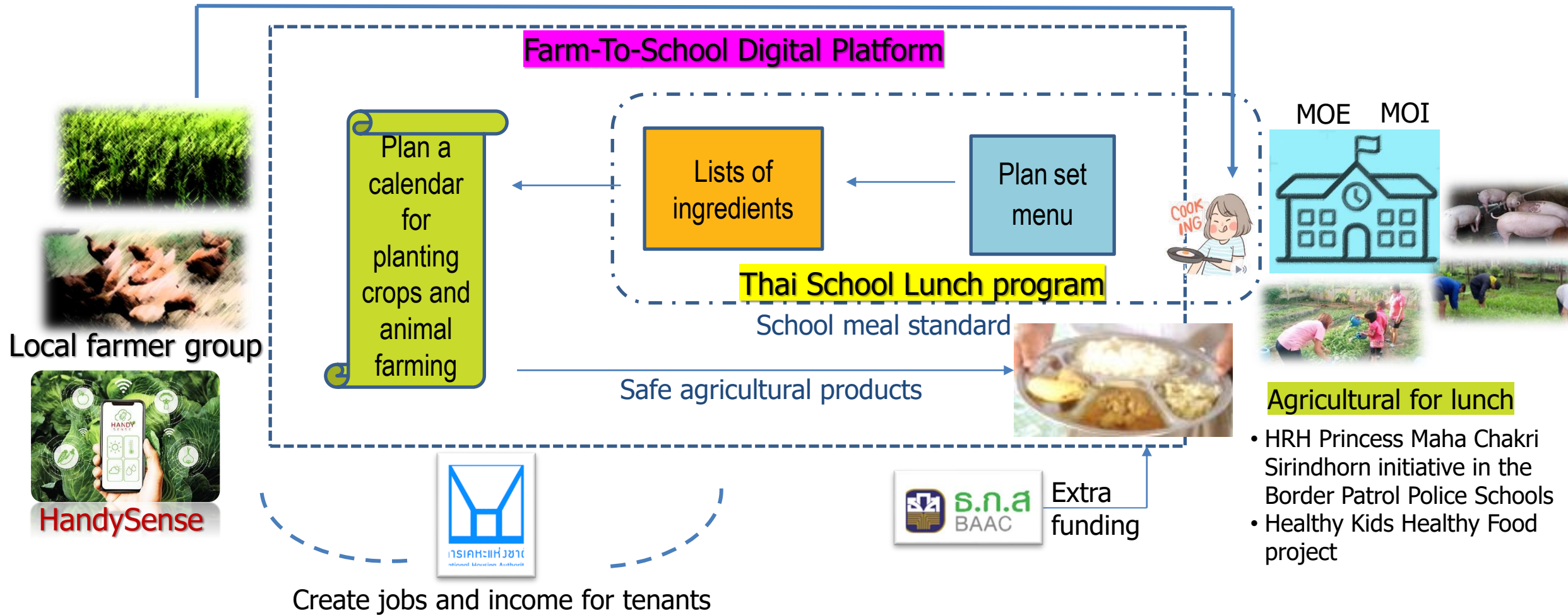


Thailand's approach to deal with nutrition challenges

- Health system: DRI 2020 -> FBDGs, iodine-iron-folic acid supplementation for pregnant and lactating women, iron supplementation for infants and children, iron-folic acid supplementation for women of reproductive age
- Education system: School lunch (at time breakfast) and milk for all children in early child care and kindergarten, and primary school; school lunch standard, Thai School Lunch program, **Farm to school initiative**
- Food system - **healthy food environments**: Infant food marketing control Act, SSB tax, FOP labeling, nutrient profile model, restriction of marketing activities of HFSS products, FoodChoice app, food fortification

Farm to school

NFB's school food management guideline



- HRH Princess Maha Chakri Sirindhorn initiative in the Border Patrol Police Schools
- Healthy Kids Healthy Food project

Thank You!

#RDFS2022

