

*The views expressed in this presentation are the views of the author/s and do not necessarily reflect the views or policies of the Asian Development Bank, or its Board of Governors, or the governments they represent. ADB does not guarantee the accuracy of the data included in this presentation and accepts no responsibility for any consequence of their use. The countries listed in this presentation do not imply any view on ADB's part as to sovereignty or independent status or necessarily conform to ADB's terminology.*

ADB

# Asian Development Bank Opportunities

## Transport Sector Support

October 2021

Bertrand Goalou, Principal Transport Specialist, ADB

BUSINESS  
OPPORTUNITIES



# Transport Sector

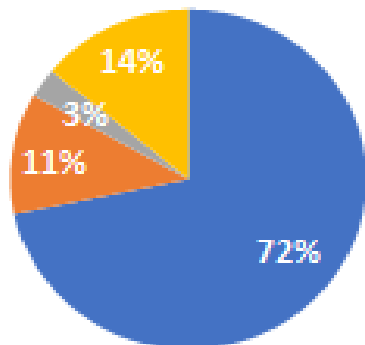
## Transport

ADB assists member countries in developing Asia to building transport infrastructure and services which contribute towards low-carbon, safe, accessible, and affordable transport systems.

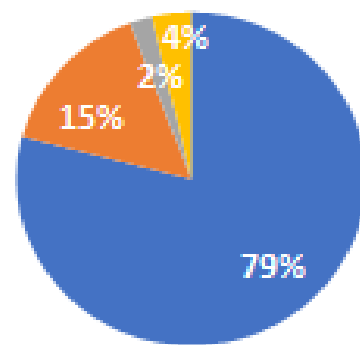


# Transport Sector Portfolio

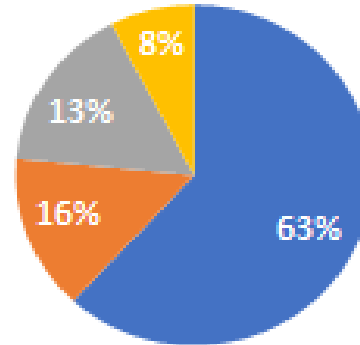
1990s  
Average: \$880 million/year  
16% ADB total



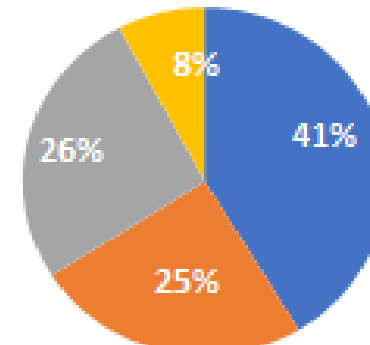
2000s  
Average: \$2 billion/year  
26% ADB total



2010s  
Average: \$4.5 billion/year  
28% ADB total



2020–2023  
Average: \$4.9 billion/year  
21% ADB total



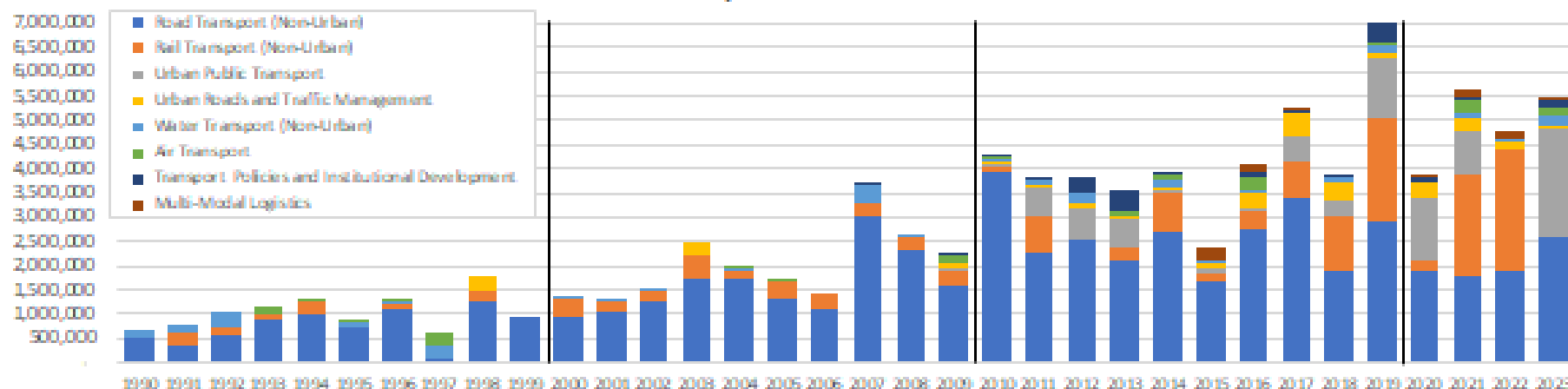
■ Road Transport (Non-Urban)

■ Rail Transport (Non-Urban)

■ Urban

■ Other

By Subsector, 1990–2023

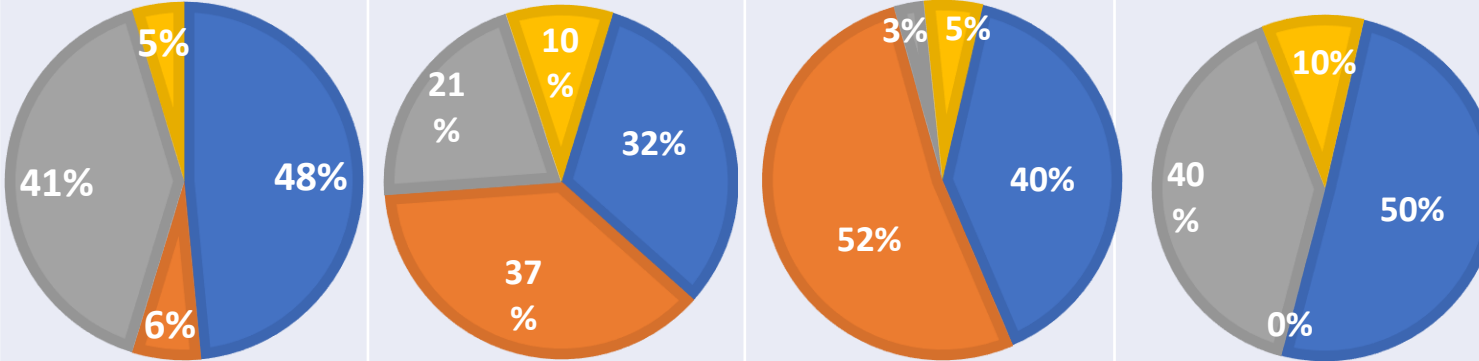


Source: ADB, WPBF 2020–2023





# Transport Project Pipeline

	2020	2021	2022	2023																									
Number of TRA Projects	28	29	26	29																									
Lending amount	\$3,898M (13%)	\$5,619M (24%)	\$4,791M (24%)	\$5,433M (26%)																									
Total Lending	\$31,027M	\$23,330M	\$20,327M	\$21,029M																									
Sub-sector breakdown	 <table border="1"> <caption>Sub-sector Breakdown Data</caption> <thead> <tr> <th>Year</th> <th>Road Transport (Non-Urban)</th> <th>Rail Transport (Non-Urban)</th> <th>Total Urban</th> <th>Total Others</th> </tr> </thead> <tbody> <tr> <td>2020</td> <td>48%</td> <td>6%</td> <td>41%</td> <td>5%</td> </tr> <tr> <td>2021</td> <td>32%</td> <td>37%</td> <td>21%</td> <td>10%</td> </tr> <tr> <td>2022</td> <td>40%</td> <td>52%</td> <td>3%</td> <td>5%</td> </tr> <tr> <td>2023</td> <td>50%</td> <td>0%</td> <td>40%</td> <td>10%</td> </tr> </tbody> </table>				Year	Road Transport (Non-Urban)	Rail Transport (Non-Urban)	Total Urban	Total Others	2020	48%	6%	41%	5%	2021	32%	37%	21%	10%	2022	40%	52%	3%	5%	2023	50%	0%	40%	10%
Year	Road Transport (Non-Urban)	Rail Transport (Non-Urban)	Total Urban	Total Others																									
2020	48%	6%	41%	5%																									
2021	32%	37%	21%	10%																									
2022	40%	52%	3%	5%																									
2023	50%	0%	40%	10%																									

Source: WPBF 2020-2023

INTERNAL. This information is accessible to ADB Management and staff. It may be shared outside ADB with appropriate permission.



# ADB Strategy 2030 – Operational Priorities

ADB will focus on seven operational priorities:



## Addressing remaining poverty and reducing inequalities

human development and social inclusion, quality jobs, education and training, better health, social protection



## Tackling climate change, building climate and disaster resilience, and enhancing environmental sustainability

low greenhouse gas emissions development, approach to building climate and disaster resilience, environmental sustainability, water–food–energy security nexus



## Promoting rural development and food security

market connectivity and agricultural value chain linkages, agricultural productivity and food security, food safety



## Fostering regional cooperation and integration

connectivity and competitiveness, regional public goods, cooperation in finance sector, subregional initiatives



## Accelerating progress in gender equality

scaled-up support for gender equality; women's economic empowerment; gender equality in human development, decision-making, and leadership; reducing time poverty for women; strengthening women's resilience to shocks



## Making cities more livable

integrated solutions, funding for cities, inclusive and participatory urban planning, climate resilience and disaster management



## Strengthening governance and institutional capacity

public management reforms and financial sustainability, service delivery, capacity and standards

## Transport contributes to all OPs in Strategy 2030

### HOW WILL ADB ADD VALUE?

ADB will add value through

#### FINANCE

Providing own financing while also mobilizing funds from other sources

#### KNOWLEDGE

Focusing on practical value that fits local conditions, identify lessons, and replicate good practices

#### PARTNERSHIPS

Promoting dialogue and collaboration among diverse partners and stakeholders

### WHAT PRINCIPLES WILL GUIDE ADB'S OPERATIONS?

#### USING COUNTRY-FOCUSED APPROACH

Provide customized solutions to each developing member country's (DMC's) specific development needs and challenges

#### PROMOTING THE USE OF INNOVATIVE TECHNOLOGY

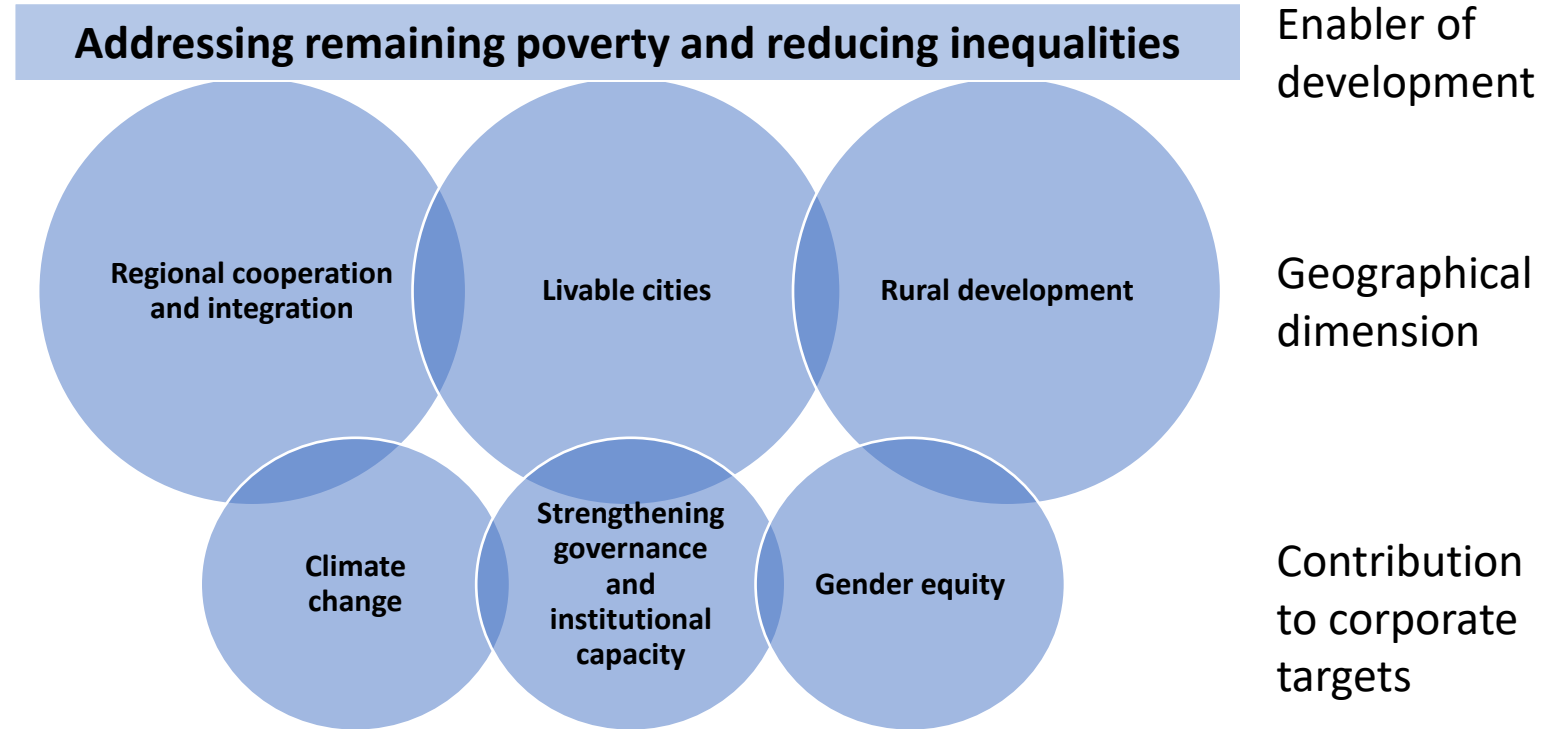
Proactively seek ways to use advanced technologies across operations and provide capacity building support to DMCs

#### DELIVERING INTEGRATED SOLUTIONS

Combine expertise across a range of sectors and themes, and through a mix of public and private sector operations

# Transport Sector Group overview

Transport in an enabler of development  
with direct links to Strategy 2030 Operational Priorities



“Underdeveloped transportation networks restrict the flow of people, goods and service. Rehabilitation and better management and maintenance of infrastructure assets are essential.” (ADB, Strategy 2030)



# Transport Sector Strategy for Central and West Asia



- Focus on CAREC Program – Central Asia Regional Economic Cooperation Program
- Rehabilitation of roads and railway network to enhance regional connectivity
- Development of economic corridors
- Development of border infrastructure to enable efficiency in trade
- Road maintenance and road safety
- Some support for urban transport infrastructure and system improvements

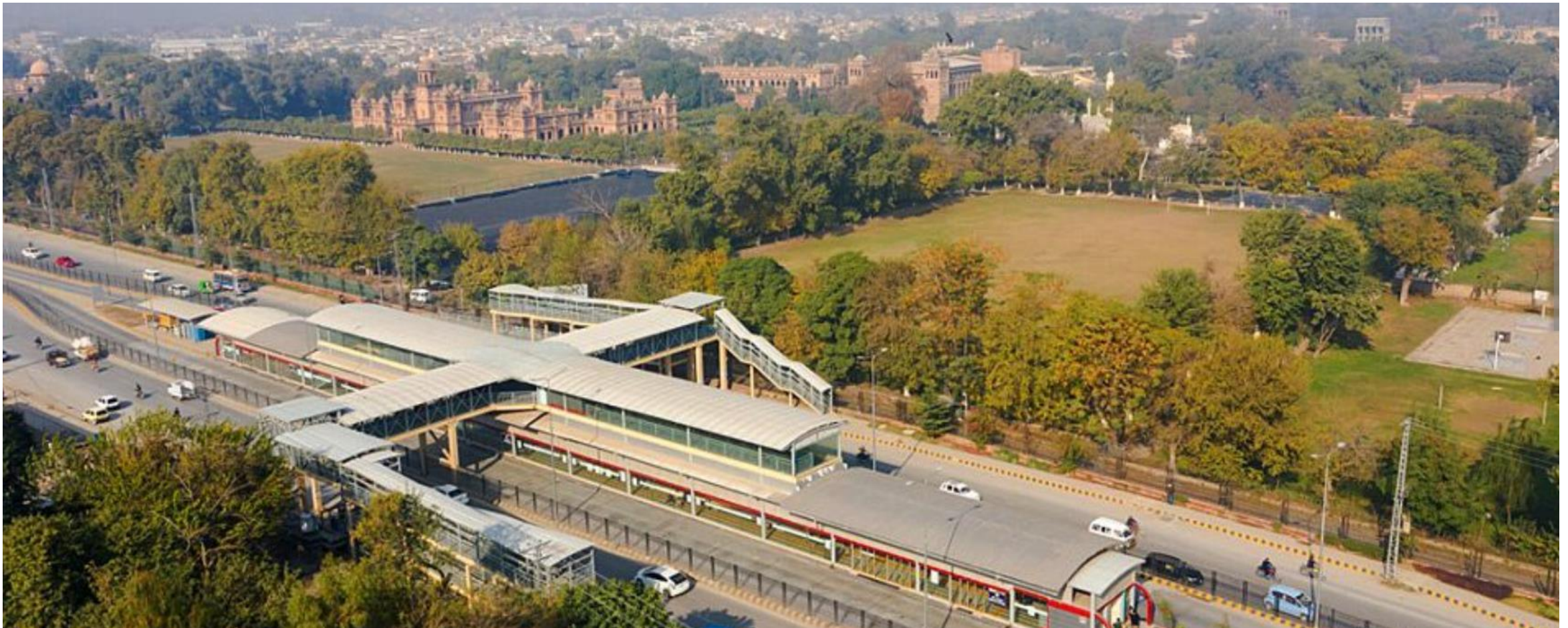
# Selected Flagship and innovative Projects



## **PAK: Peshawar Sustainable Bus Rapid Transit Corridor Project**

Approved in 2017, project cost \$580 million, operational since 2020.

3<sup>rd</sup> generation BRT, institutional reforms, financial sustainability, “façade-to-façade” and NMT, bicycle lanes, universal accessibility and low-emission vehicle technology (Hybrid).







# Transport Assistance in South Asia

## Mass transit / Urban Transport

- Bangalore Metro (urban transport / mass transit)
- Chennai Metro (urban transport / mass transit)
- Dhaka Metro (urban transport / mass transit)
- Delhi – Meerut Rapid Transit System:
- Karachi mass transit system

## Types of assistance

- Project preparation, planning and design
- Civil works, electrical and mechanical, rolling stock
- Environmental and social protection



## Rail in Bangladesh

- SASEC Tongi Akhaura dual gauge project
- SASEC Laksam Chattogram
- SASEC Chittagong-Cox Bazar

## Types of assistance

- Capacity Development
- Technical Assistance
- System improvements
- Civil works and rolling stock



# Selected Flagship and innovative Projects

## IND: Delhi–Meerut Regional Rapid Transit System Investment Project

Approved in 2020, project cost \$3,950 million, completion in 2027

The investment project will finance prioritized rail corridors of the planned regional rapid transit (RRTS) network in India's National Capital Region (NCR).

The 82-km corridor is expected to reduce journey times from 3-4 hours to about 1 hour.







# Transport Assistance in South East Asia



CAM	Support to deepening GMS corridor connectivity and developing multi-model transport projects
INO	Continue dialogue with the Government for possible lending operations for transport projects in various sub-sectors
LAO	Address challenges of: (i) maintenance of national road network, and (ii) increasing urban traffic congestion
PHI	Address challenges of: (i) urban transport congestion (ii) institutional issue
THA	Continue dialogue with the Government for possible lending operations for mass rapid transit development PPP - Bangkok Mass Rapid Transit Project (Pink & Yellow Lines)
VIE	Focus to improve the ongoing portfolio implementation and continue support to enhancing GMS connectivity and climate change resilient infrastructure
MYA	Support to improving the national highway network, railway and building institutional capacity

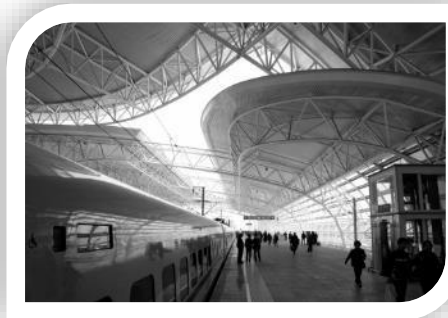
# Transport Assistance in East Asia

- **People's Republic of China**

- Promote inclusive growth and environmental sustainability
- Support public transport, low carbon modes and energy efficient technology

- **Mongolia**

- Enhance connectivity for regional trade development
- Connect rural population to markets and public services
- Provide an efficient and affordable urban transport system





## THE PACIFIC ISLANDS

# Transport Assistance in the Pacific

**Fiji:** arterial and rural roads, streetlights, and bridges, jetties

**Kiribati:** roads

**Nauru:** port development

**PNG:** primary national roads and highways, provincial roads, bridges, international port, maritime infrastructure (wharf) and safety, domestic airports, shipping services

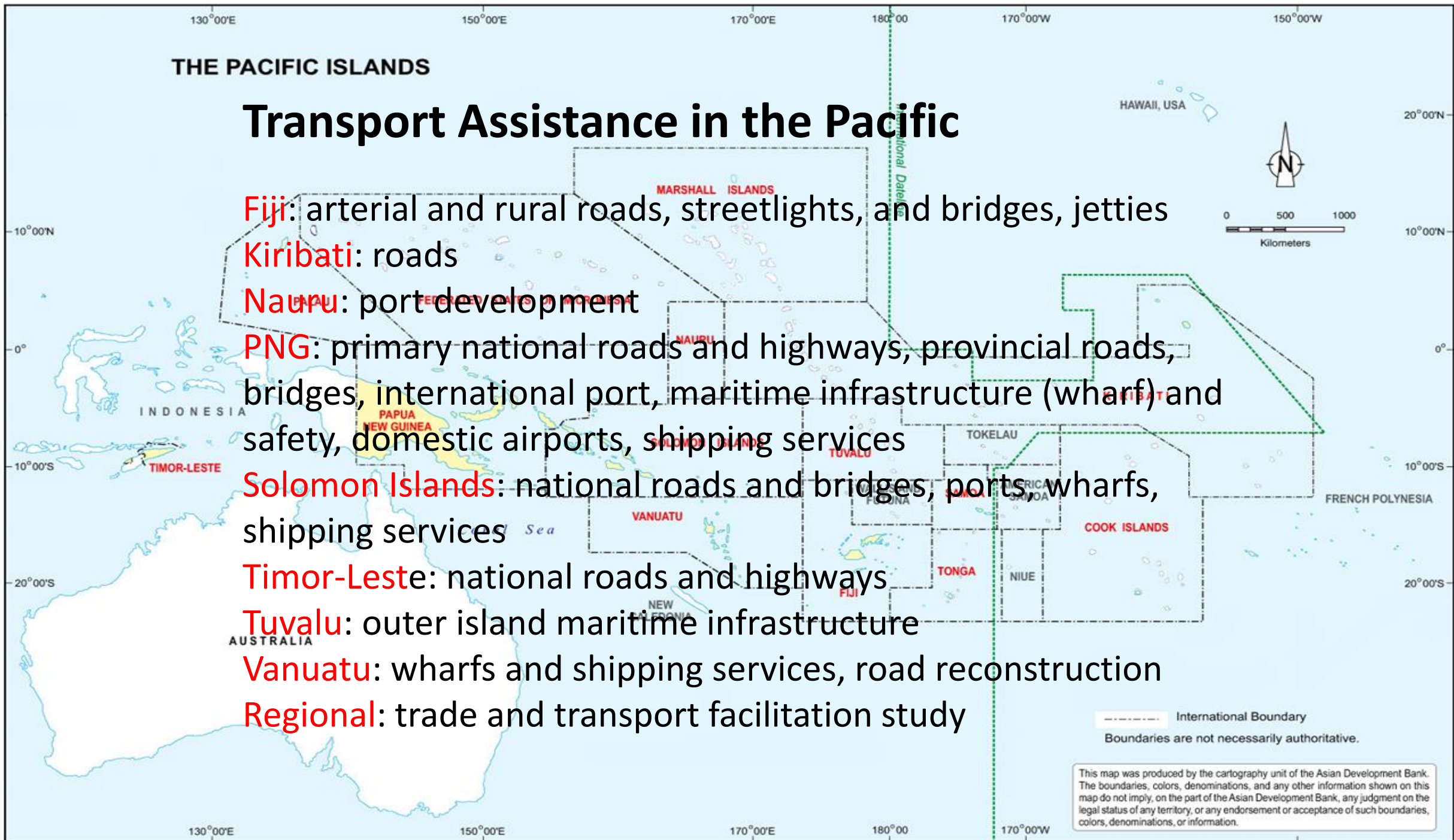
**Solomon Islands:** national roads and bridges, ports, wharfs, shipping services

**Timor-Leste:** national roads and highways

**Tuvalu:** outer island maritime infrastructure

**Vanuatu:** wharfs and shipping services, road reconstruction

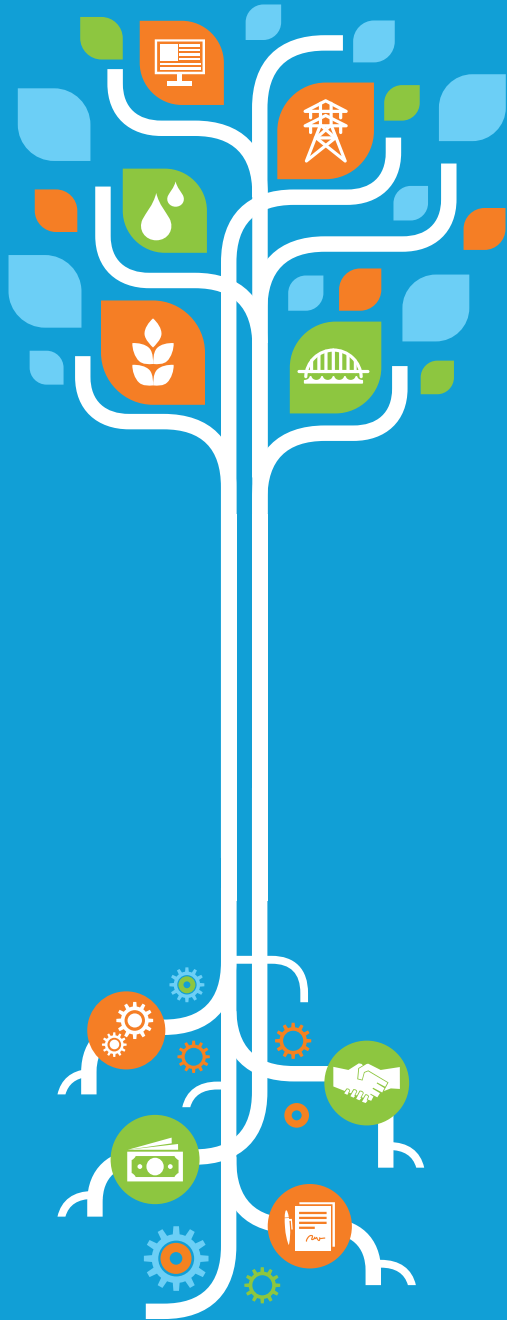
**Regional:** trade and transport facilitation study



# Key messages

- Sub-sector focus
  - Roads still important (Regional connectivity, Asset Management, Road Safety)
  - Rail (National rail systems, institutions and operations)
  - Urban transport (metro, bus, NMT)
- Changing demands from clients
  - System management
  - Efficiency gains
  - Value addition
- Incorporate new technologies and uses
  - system management
  - Use of data (operators and users)
  - Emerging technologies (e-vehicles, digital technologies)
- Increased attention to private sector support
- Broader use of financial services to meet demands
- All information on ADB-supported projects disclosed on ADB website





# THANK YOU!

Bertrand Goalou  
Principal Transport Specialist, ADB  
[bgoalou@adb.org](mailto:bgoalou@adb.org)