



# 16<sup>th</sup> Global Forum on Human Settlements (GFHS 2021): Accelerate Green Transformation and Innovation Towards Healthy, Resilient, and Carbon-Neutral Cities

Bambang Susantono

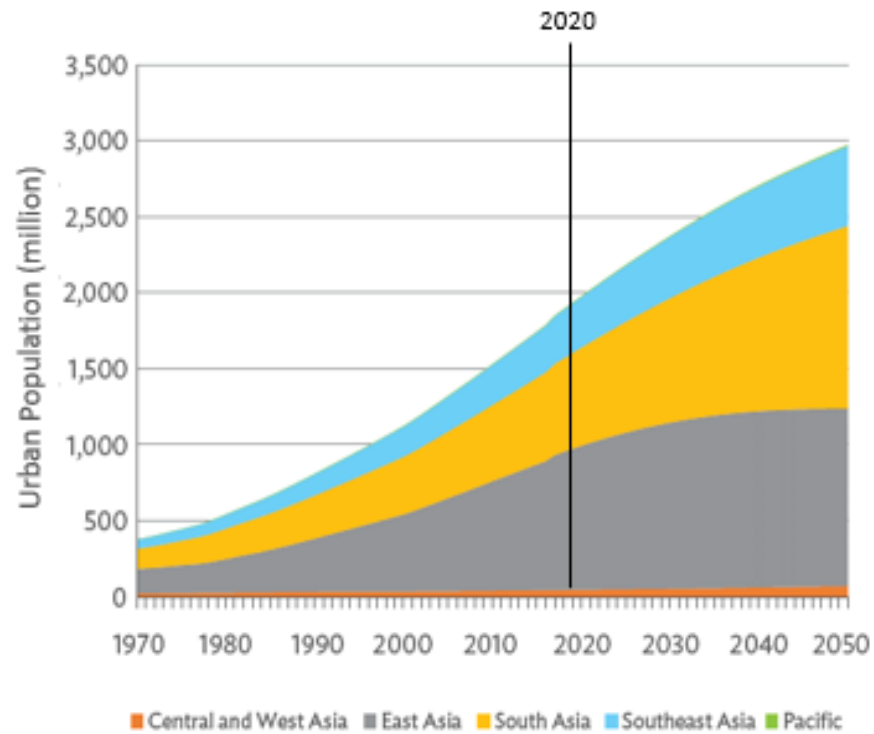
Vice-President for Knowledge Management and Sustainable Development

27-29 October 2021

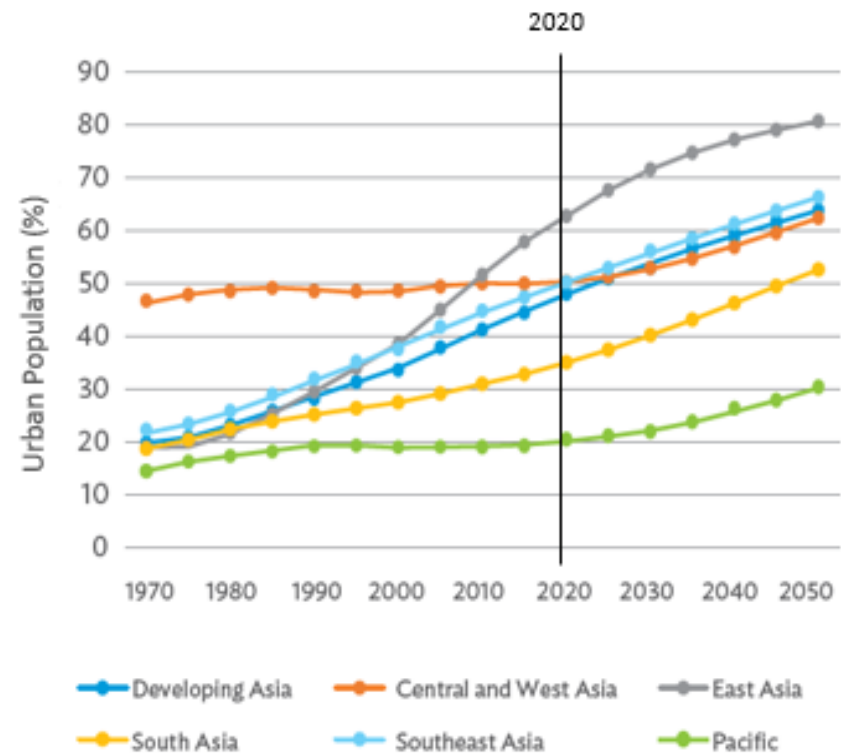


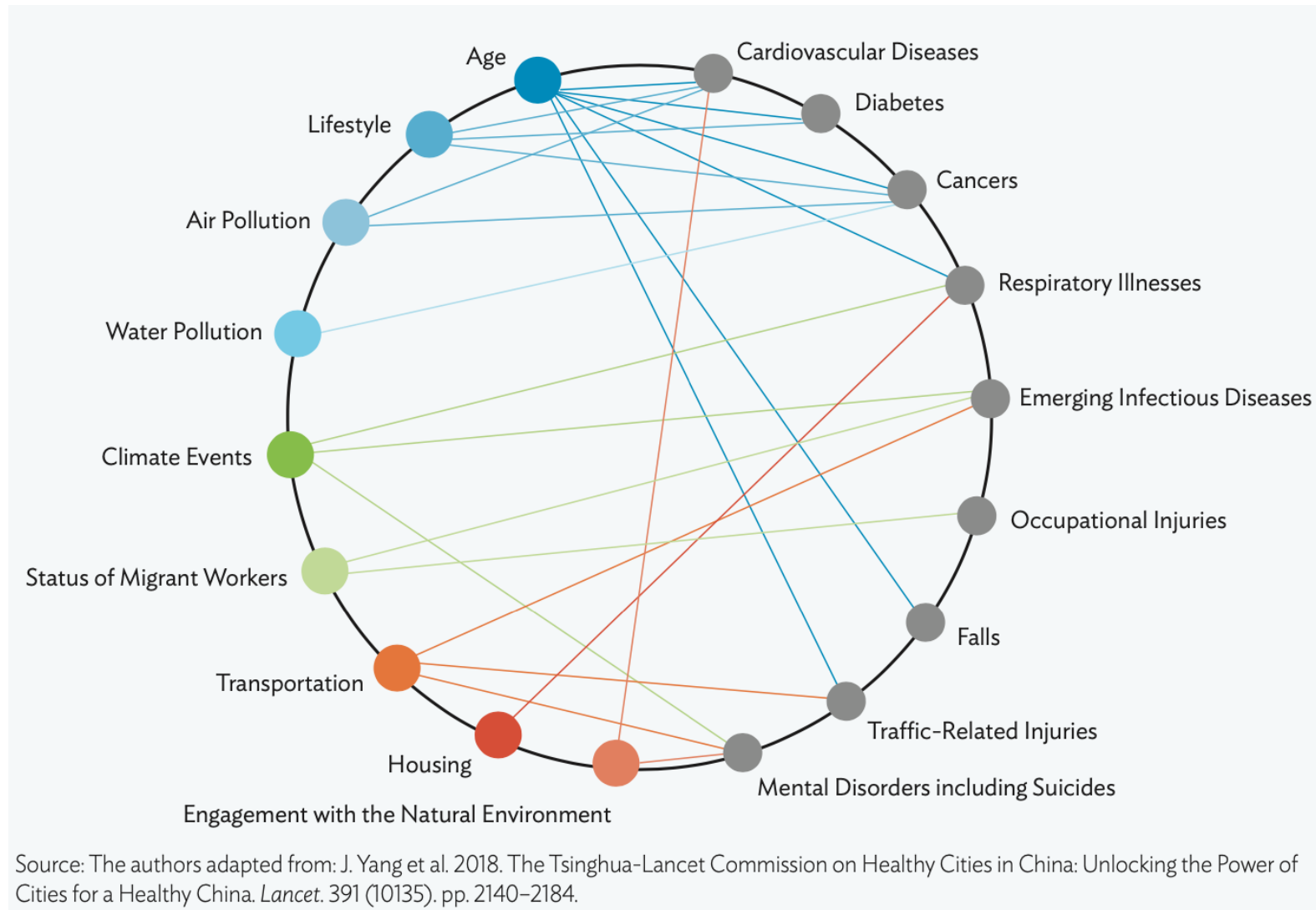


## Region-wise Urban Population



## Region-wise Urban Population Trends







## Infrastructure and Services

- Medical and health promoting infrastructure
- Elderly care services and programs for citizen well-being
- Enable access for all



## Urban Planning and Design

- Green open spaces
- Inclusive design
- Compact 15-minute city
- Transit-oriented development



## Environment and Climate Resilient

- Clean and safe
- Walkable and accessible
- Human-focused, community interaction
- Disaster resilient







## PRC: Jilin Yanji Low-Carbon Climate-Resilient Healthy City Project:

- Systematic integration and bringing out health benefits and making Yanji fit for **a four-generation urban society** that is emerging worldwide.
- Integrated solution to make Yanji more livable, transforms city **promotes low-carbon urban mobility and physical activities that enhance public health.**
- First bus rapid transit (BRT) line in city integrates with **improved bicycle and pedestrian networks** and environments and new small streets
- Connects major urban functions areas following principles of **“compact city”** and “transit-oriented development” with higher density mixed-use and pedestrian-friendly centers around stations.
- New and completed river greenways are **“sponge city” green infrastructure**, enhance resilience.
- Improve water supply and wastewater systems.

Project Loan. Approval: 2019. Commitment: 2020. Completion: 2027.  
Total: \$260 million. ADB: \$130 million.





## Ulaanbaatar Air Quality Improvement Program

- Ulaanbaatar, the capital of Mongolia, is the coldest capital in the world. Situated in a river valley and surrounded by mountains, the city is home to more than 1.5 million residents.
- High levels of particulate matter less than 2.5 micrometers (PM2.5), the most dangerous airborne particles, exceeded WHO standards several times over.
- This exposed residents, especially the poor and vulnerable living in ger areas and other parts of the city, to greater risk of poor health.
- The outcomes were illness, higher medical costs, and lost productivity, which affect the economy and quality of life of people in Ulaanbaatar.





The proposed approaches and actions discussed in this guidance note are anchored to the core principles of ADB's Strategy 2030 Operational Plan for Priority 4: Making Cities More Livable and also considers the public health and economic impacts of the pandemic.



## COVID-19 AND LIVABLE CITIES IN ASIA AND THE PACIFIC GUIDANCE NOTE

DECEMBER 2020









Thank you very much!

