



*The views expressed in this presentation are the views of the author/s and do not necessarily reflect the views or policies of the Asian Development Bank, or its Board of Governors, or the governments they represent. ADB does not guarantee the accuracy of the data included in this presentation and accepts no responsibility for any consequence of their use. The countries listed in this presentation do not imply any view on ADB's part as to sovereignty or independent status or necessarily conform to ADB's terminology.*

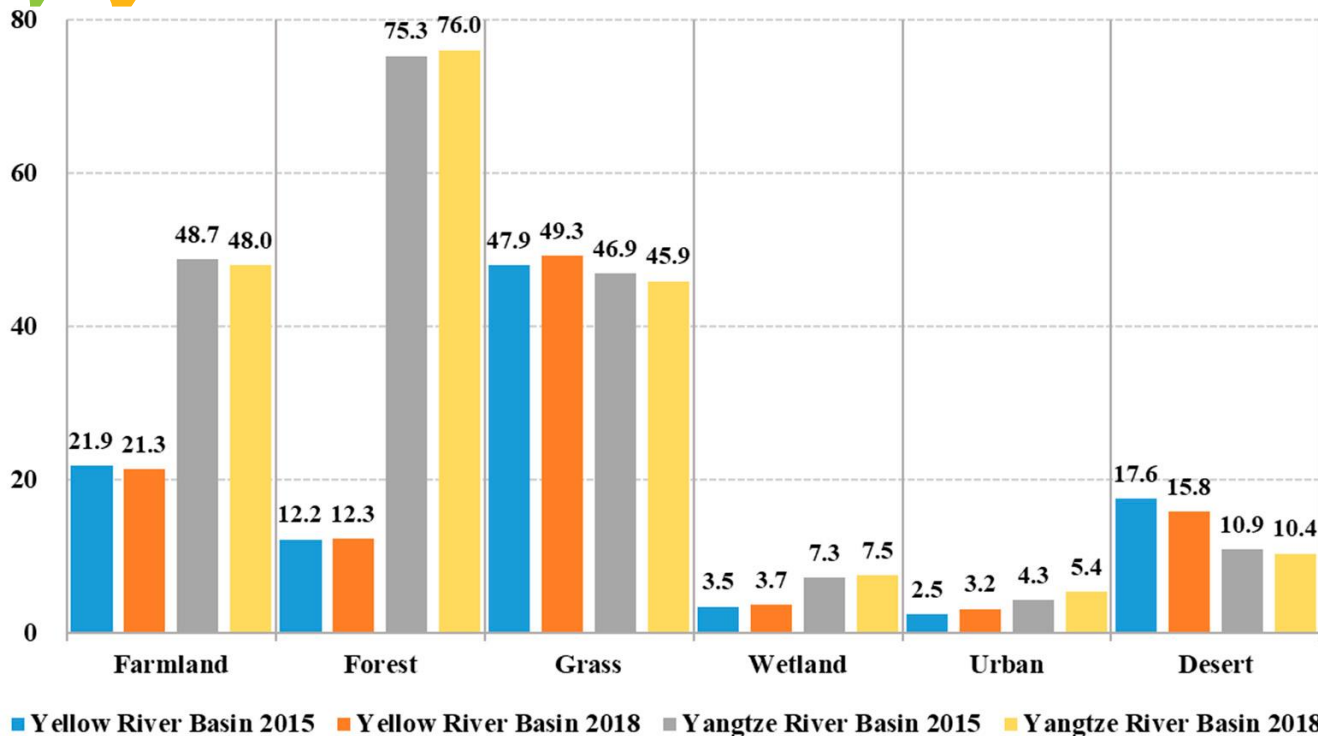
# Yellow River Ecological Corridor Program and Yangtze River Economic Belt Initiative

Supporting Wetlands, Livelihoods and Biodiversity in the  
East Asian-Australasian Flyway

29 September 2021



# Yellow and Yangtze River basin ecosystems



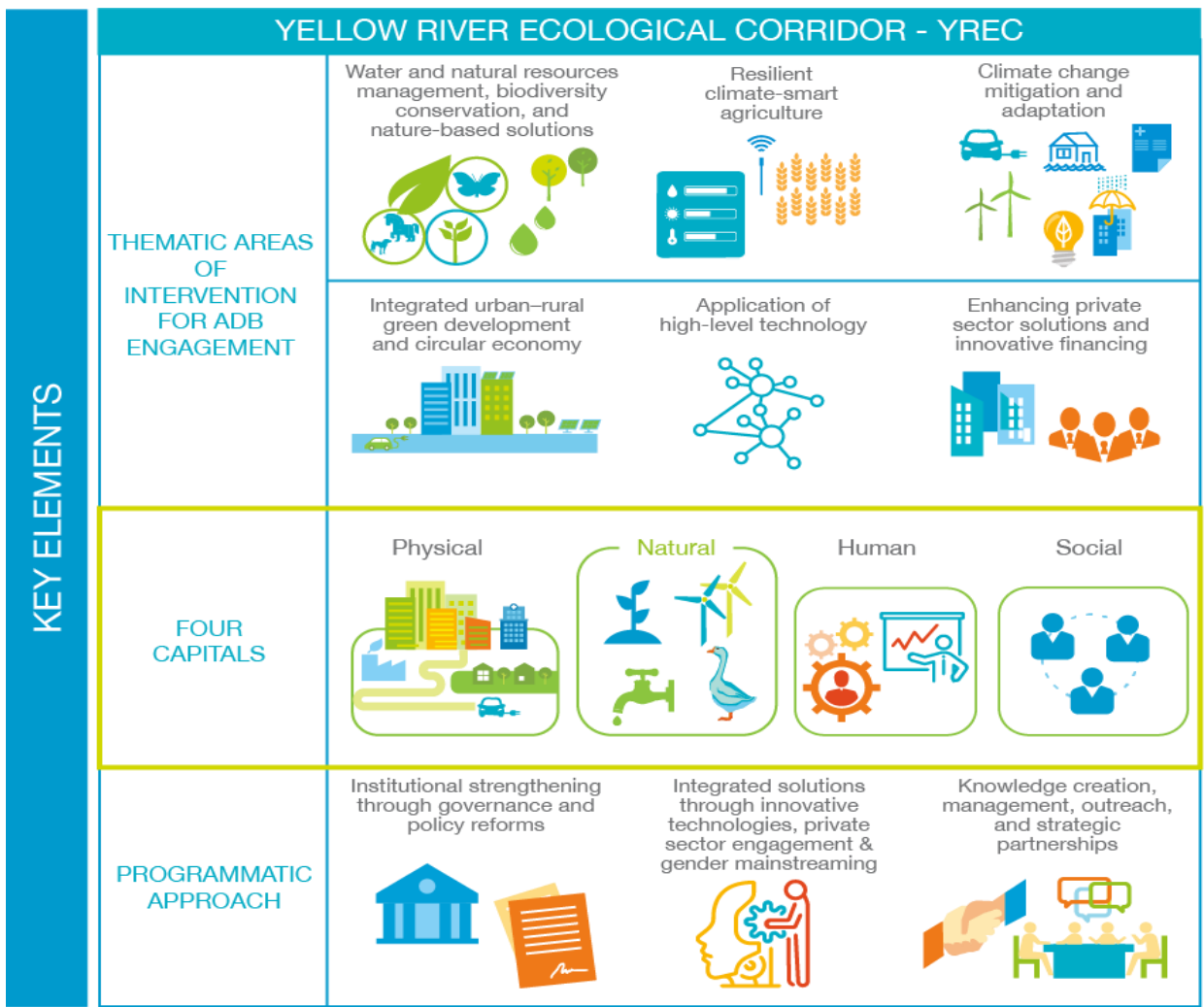
- **Yangtze river** higher ecological endowment with **forest** ecosystem as main component; **Yellow river** poorer vegetation, climatic and soil conditions
- **From 2015 to 2018**: increased areas of forest, grassland, and wetland
- Improvements in the eco-environment and **the ecosystem service value** grew from 2015 to 2018
- **Wetland ecosystems** are key for climate and flood regulation

Services	River Basin	2015	2016	2017	2018
Carbon fixation and oxygen release	Yellow River Basin	2058.1	4003.5	1875.5	3123.4
	Yangtze River Basin	9682.2	10,864.9	10,487.2	10,336.5
Water conservation	Yellow River Basin	1993.6	2979.7	2854.9	3768.1
	Yangtze River Basin	18,194.4	20,706.8	18,079.1	19,090.8
Flood regulation and storage	Yellow River Basin	3933.4	4040.7	4124.7	4270.3
	Yangtze River Basin	11,727.3	12,681.1	12,992.0	13,340.8
Climate regulation	Yellow River Basin	37,405.0	37,891.7	40,333.6	39,953.9
	Yangtze River Basin	88,570.1	90,258.4	97,534.3	97,086.6
Soil conservation	Yellow River Basin	1022.6	1169.1	1031.8	6717.9
	Yangtze River Basin	14,532.3	15,816.7	14,341.6	16,250.0



# The Yellow River Ecological Corridor (YREC)

The Yellow river as a vital ecological corridor that can generate positive impacts for the **environment, economic growth, social well being, and climate change goals** in the PRC





# A nature-positive approach for the YREC

Ensuring that nature is an integral component of investment and fiscal policy decisions in the post-pandemic economic recovery

## Four Policy Recommendations for the YREC

1

Nature-based solutions to improve natural capital protection, ecological restoration and sustainable agricultural practices

2

Gross Ecosystem Product to improve effectiveness of decision-making and planning

3

Incentive mechanisms to scale up natural capital investments

4

Sustainable finance to increase private capital investments in nature

# The Yangtze River Economic Belt (YREB)

THE YANGTZE RIVER ECONOMIC BELT (YREB) COVERS:

9 PROVINCES  
2 MUNICIPALITIES



BETWEEN 2015–2023, ADB WILL PROVIDE ABOUT

**\$2.89 BILLION**

IN LOANS AND TECHNICAL ASSISTANCE  
IN THE MIDDLE AND UPPER REACHES  
OF THE YREB



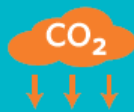
## AREAS OF INTERVENTION



Institutional strengthening, governance and policy reforms



Natural resources management, ecosystem restoration, biodiversity conservation and sustainable management of water resources



Green development and inclusive low-carbon transformation



Sustainable agriculture and rural-urban integration

## A programmatic approach

- ADB support to the **YREB Development Plan** with lending and non-lending assistance
- **Planning tools and integrated approaches** to balance national and provincial priorities with private sector engagement
- Focus on **upstream work** for policy and institutional reforms and investment planning
- **Knowledge base and policy dialogue** to maximize ADB investment impact



Thank you

[scardascia@adb.org](mailto:scardascia@adb.org)

