

**mea**

This is not an ADB material. The views expressed in this document are the views of the author/s and/or their organizations and do not necessarily reflect the views or policies of the Asian Development Bank, or its Board of Governors, or the governments they represent. ADB does not guarantee the accuracy and/or completeness of the material's contents, and accepts no responsibility for any direct or indirect consequence of their use or reliance, whether wholly or partially. Please feel free to contact the authors directly should you have queries.

The art of meaningful international comparisons in population aging research

Axel Börsch-Supan

Regional Conference on the Health and Socioeconomic Wellbeing of Older Persons in Developing Asia: Role of Individual and Household Data
Manila (virtual), 7 September 2021

**mea**

1. The fascination of heterogeneity: Chances and challenges of international comparisons

2. Types of data needed: SHARE and SPLASH

3. Distilling a message:

The NBER International Social Security project





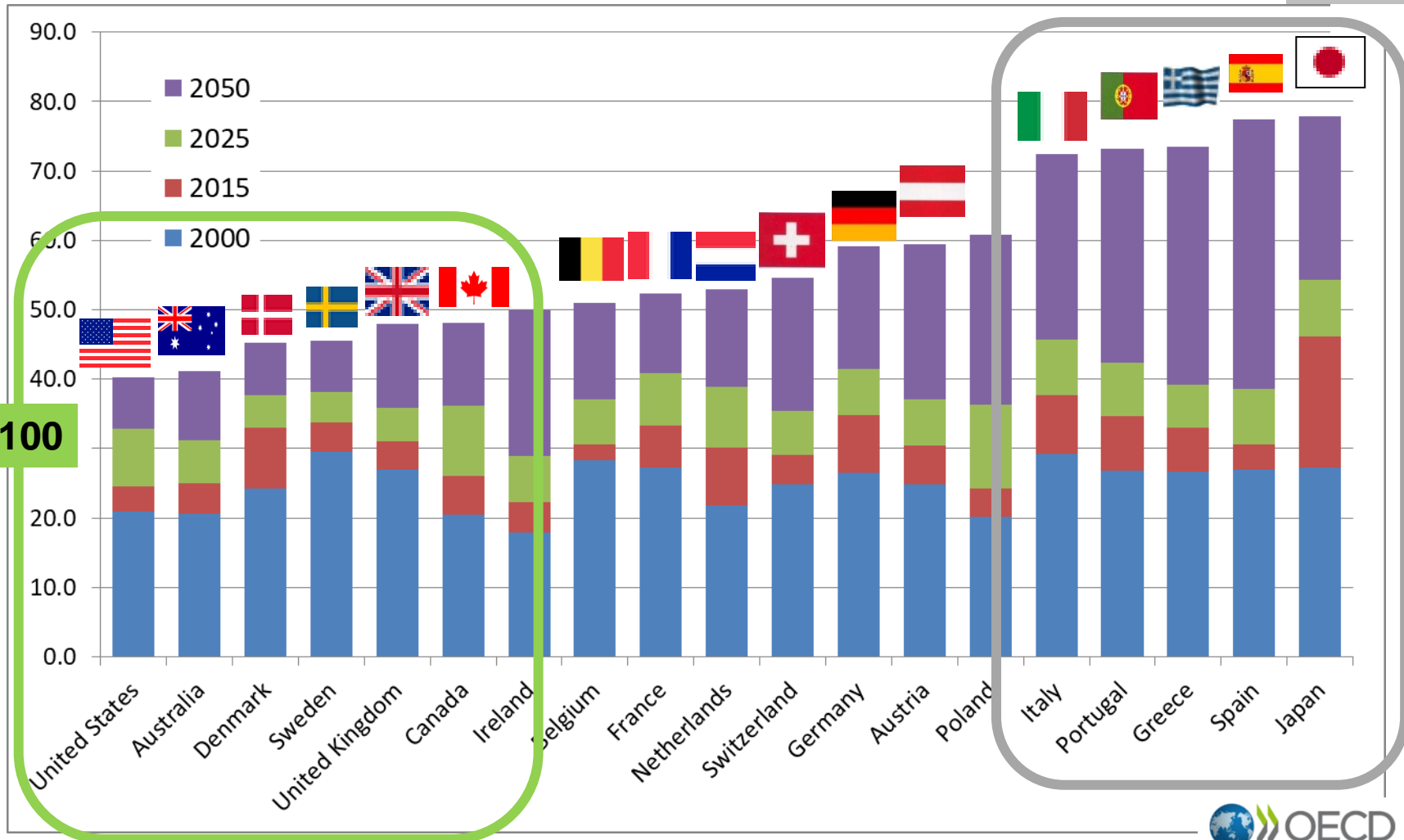
mea

Old-Age Dependency

Population 65+/population 20-64

80:100

40:100

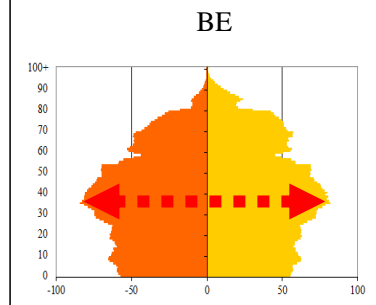
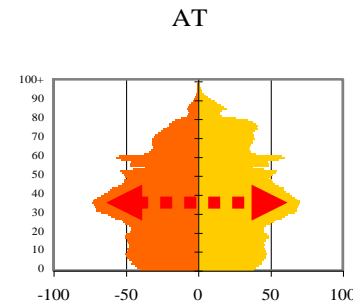
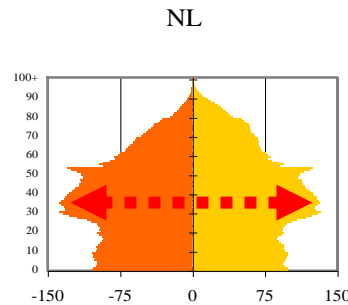
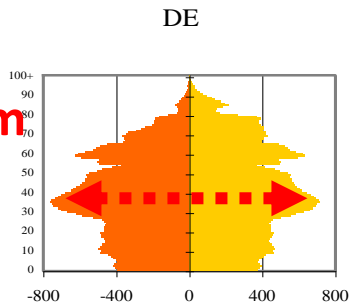




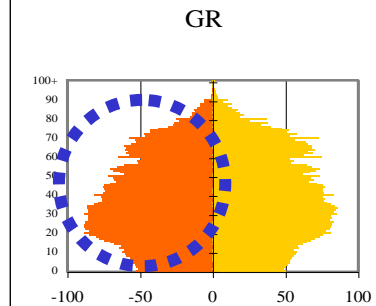
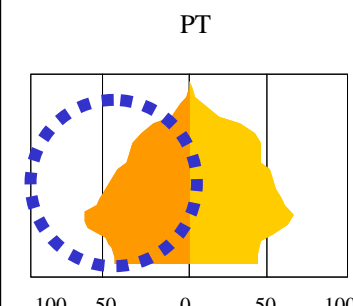
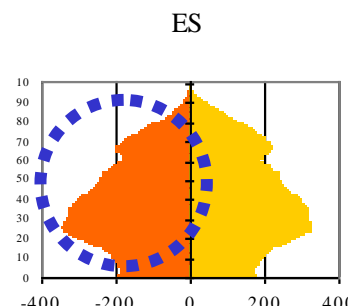
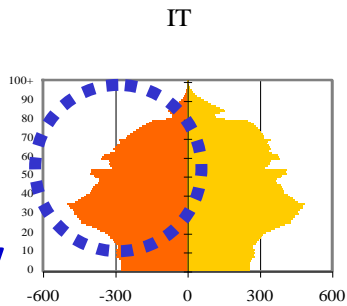
mea

Demography

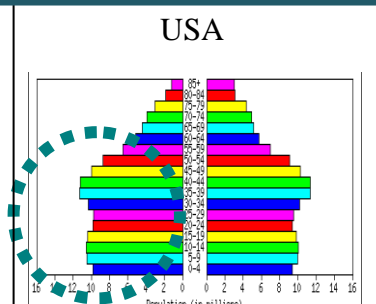
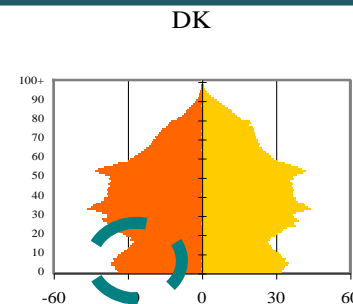
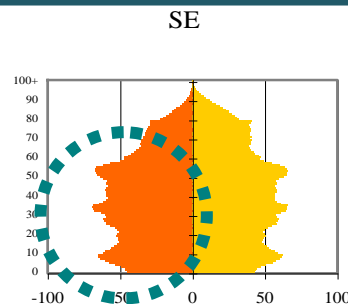
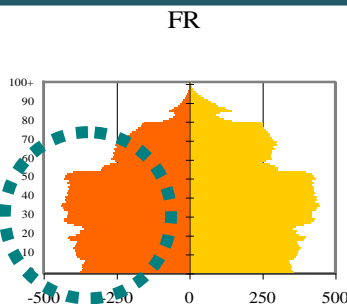
**Baby Boom
Bust Bust
transition**



**Past low
fertility
and
longevity**



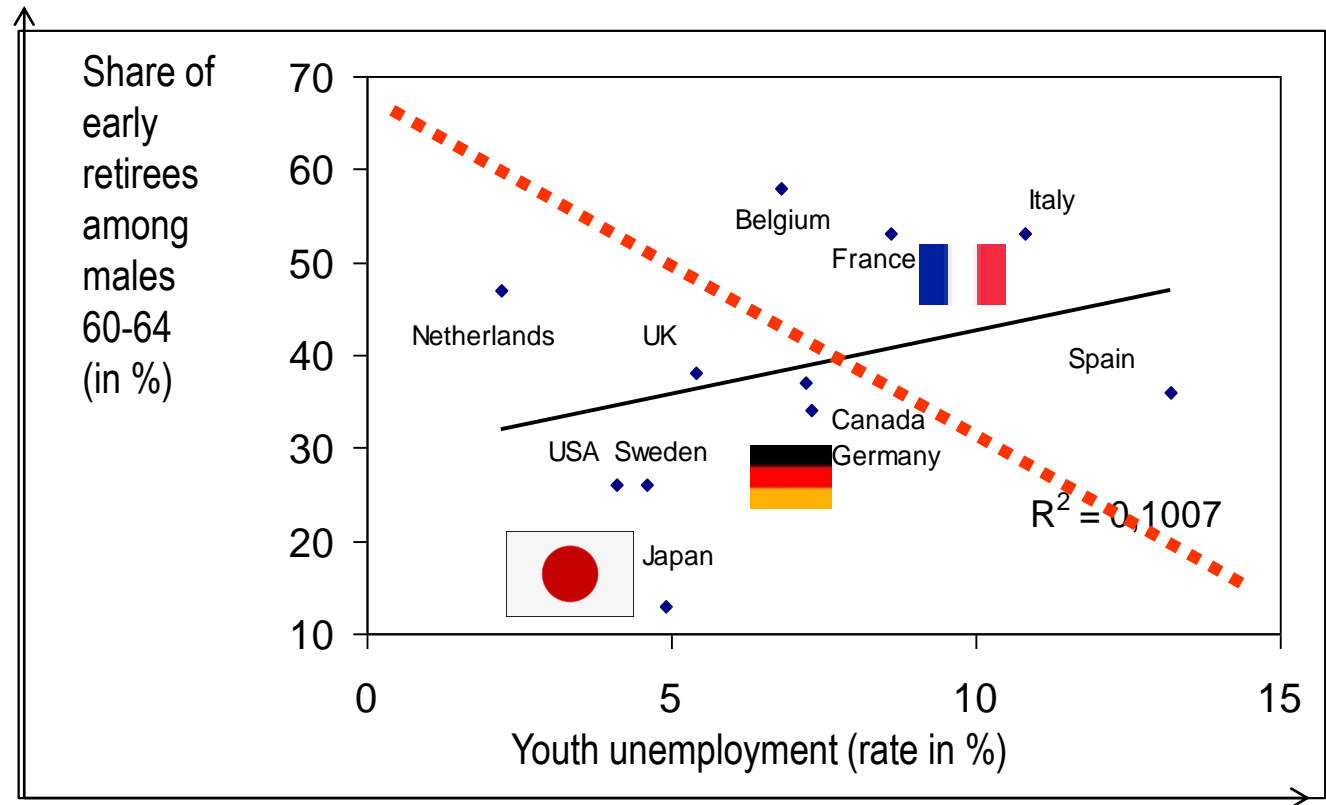
**High
current
fertility**





mea

International data as necessity



„Lump of labor fallacy“

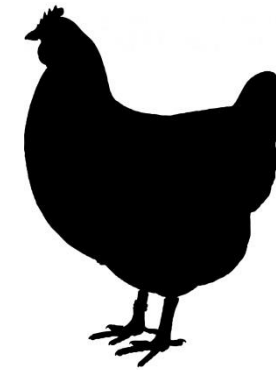
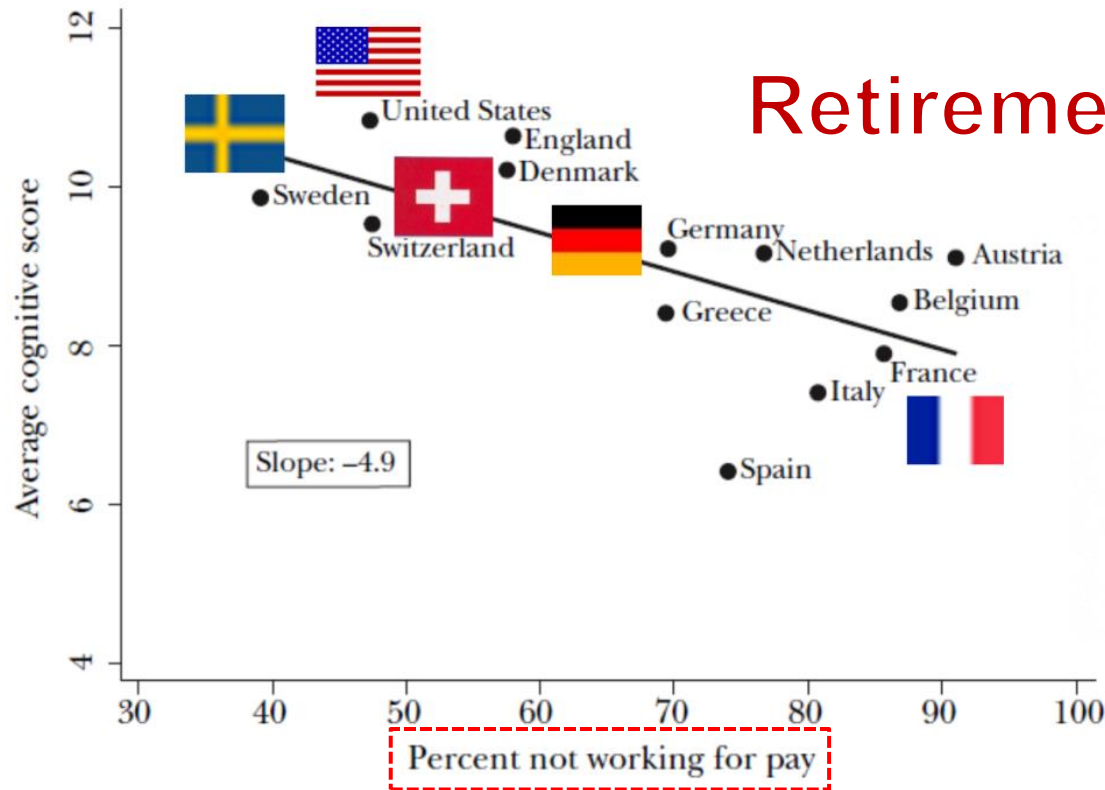


mea

International data for instruments



Retirement and cognition



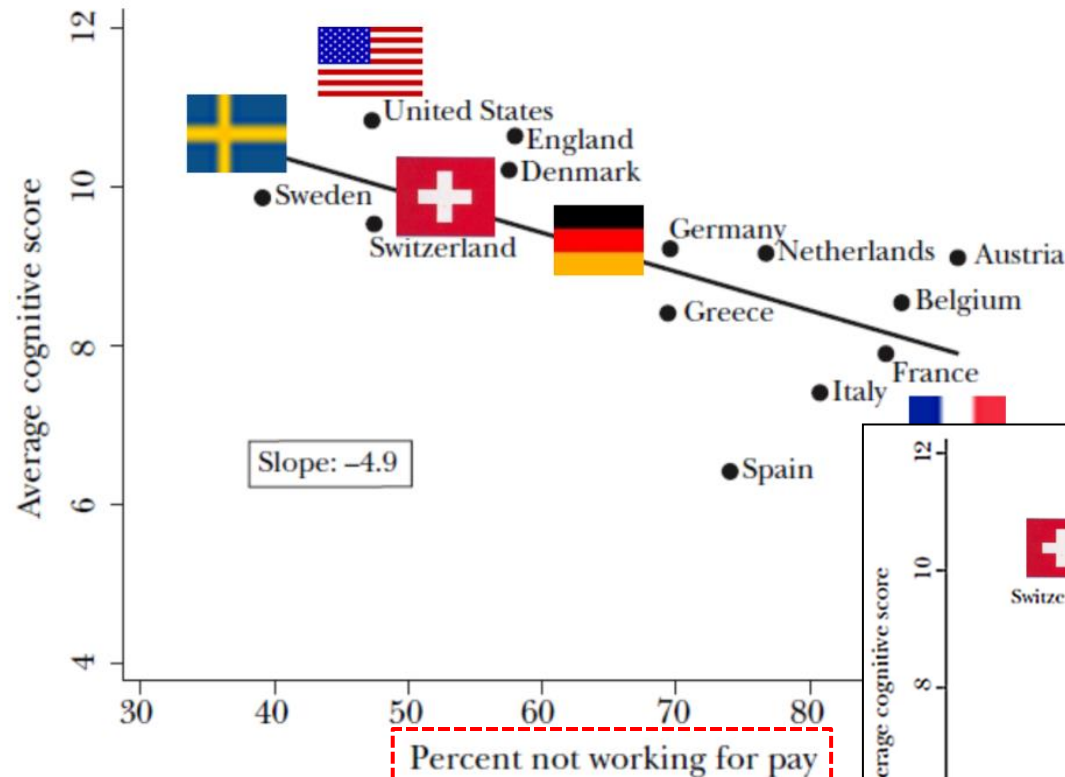
What is cause, what is effect?



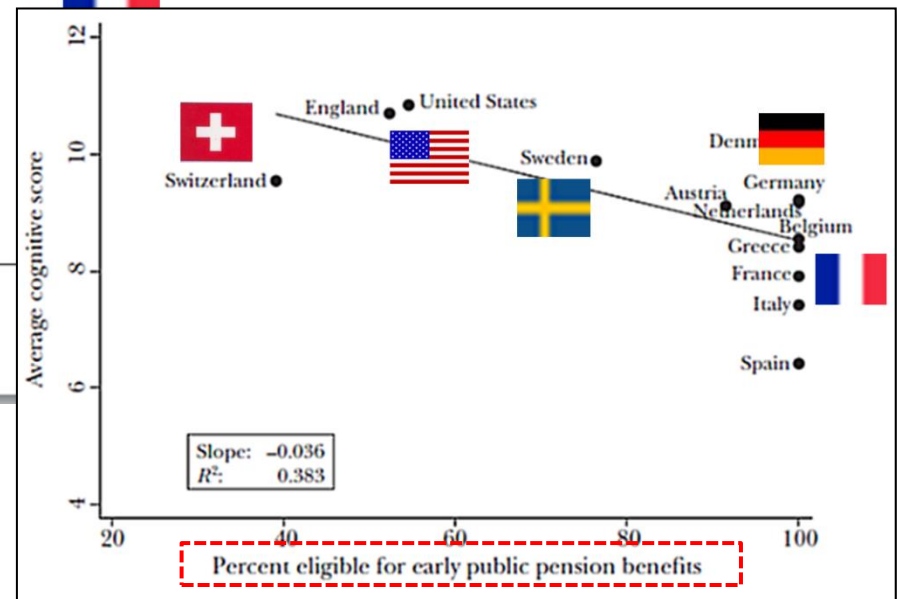
mea

Identify causal effect

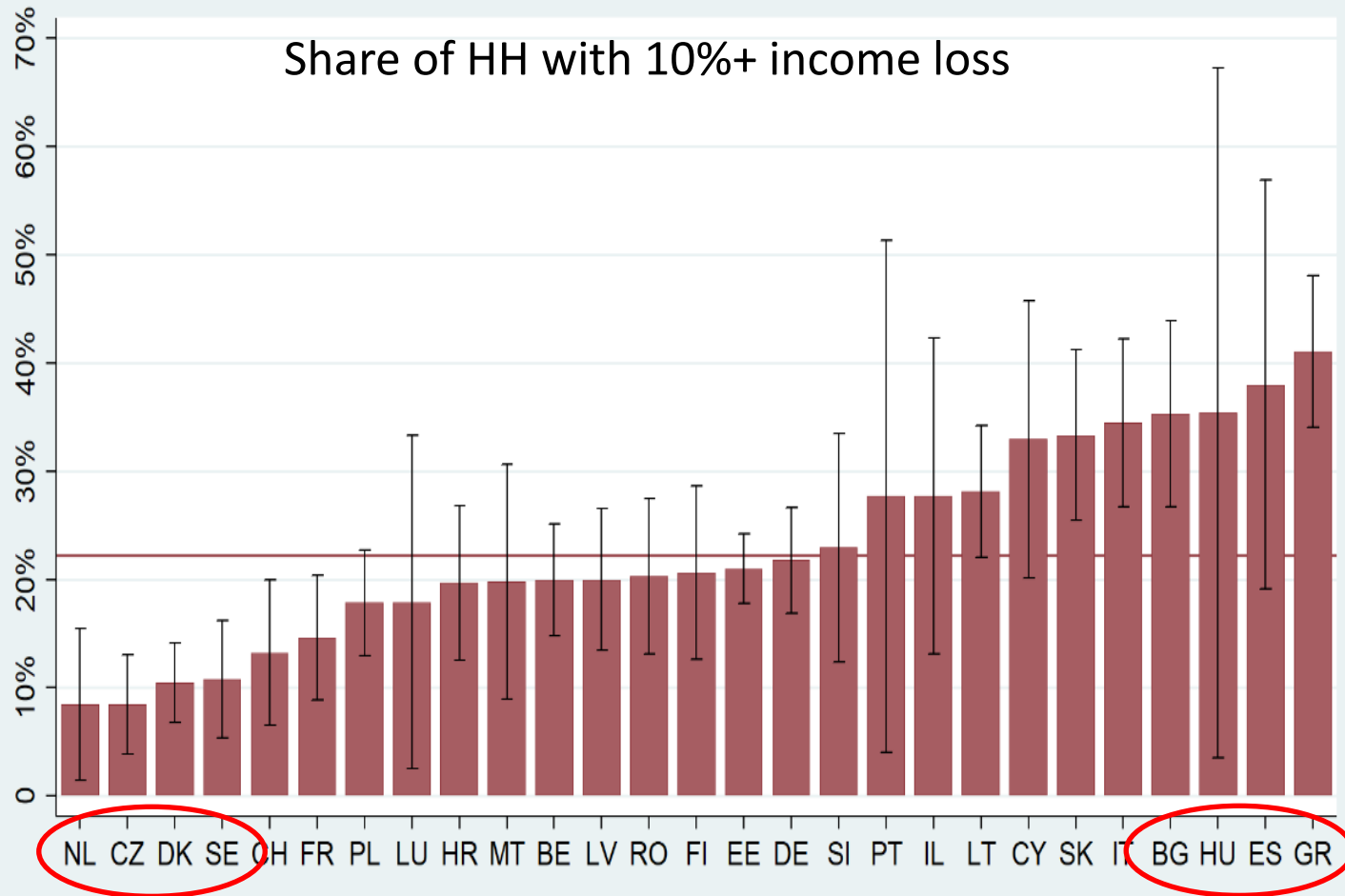
SHARE
Survey of Health, Ageing
and Retirement in Europe



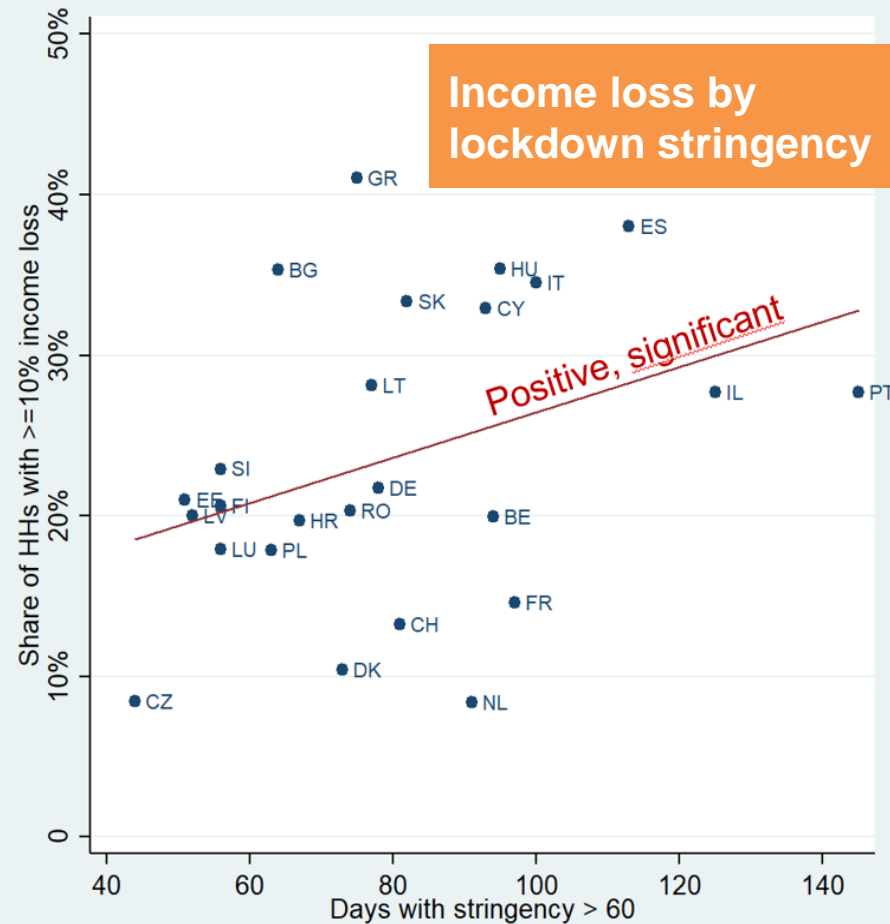
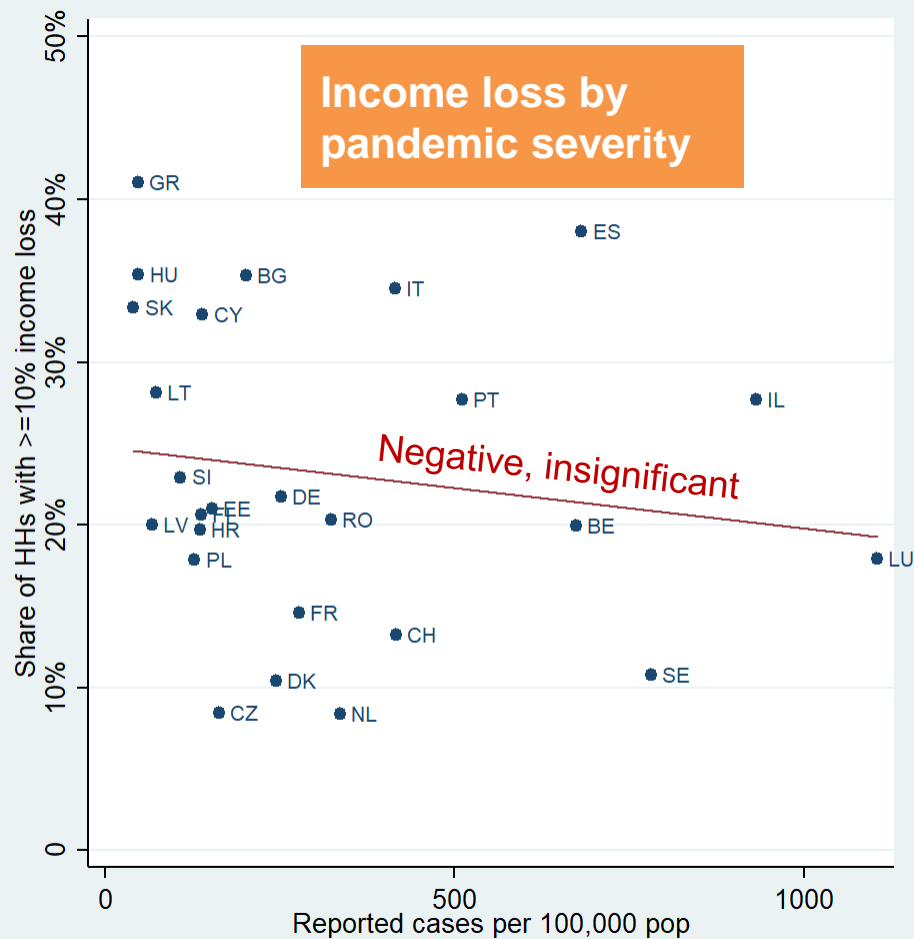
Exploit
international variation
in early retirement rules



Effects of Covid-19 in Europe

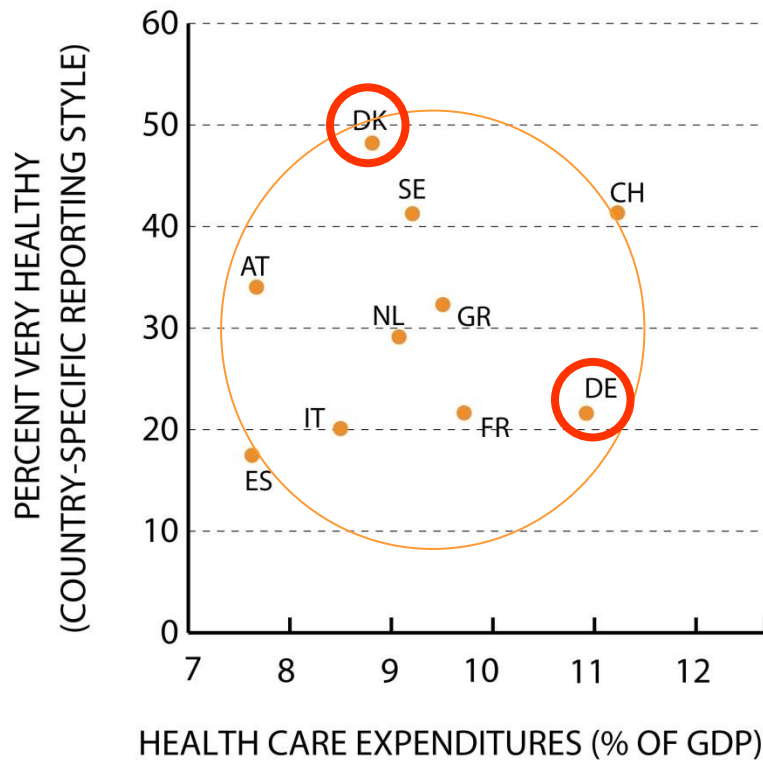


Causes for effects?



**mea**

Challenges and pitfalls: health measurement



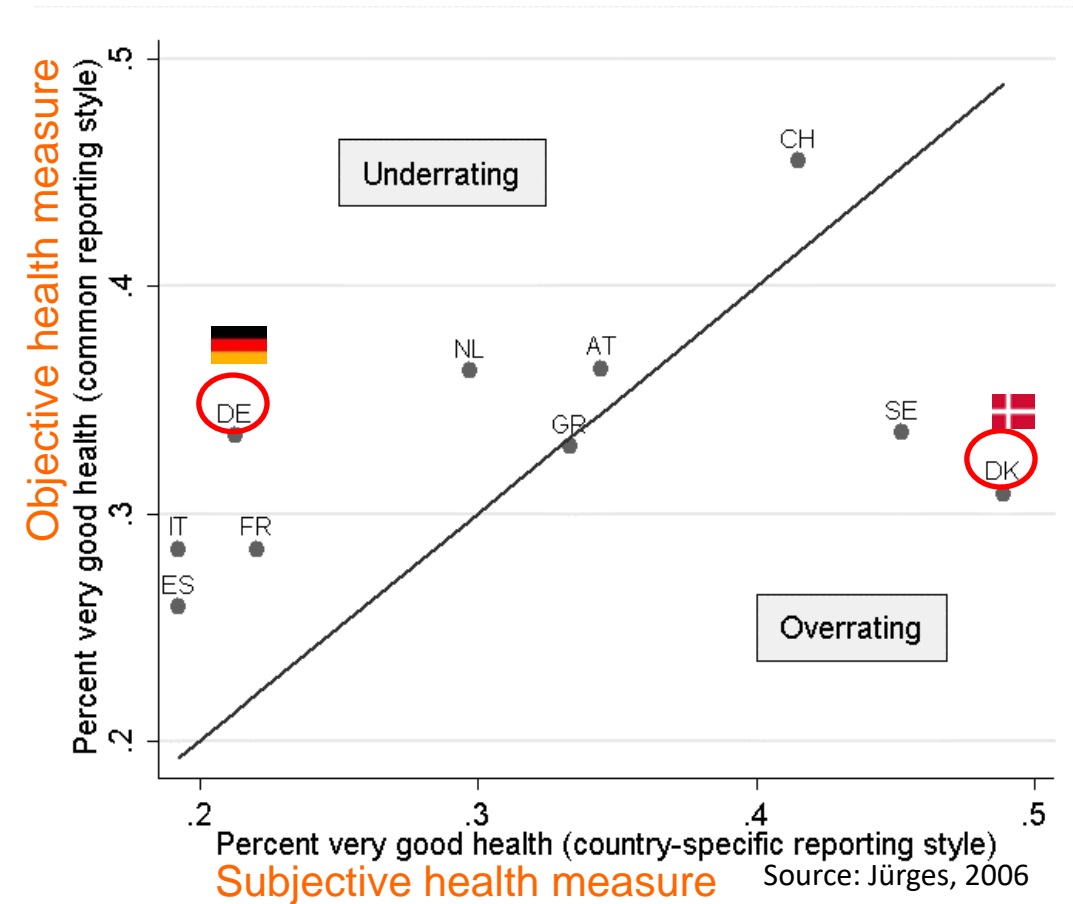
Effects of health expenditures on health: Are they wasted?

Subjective measure of health: “poor” to “excellent”



mea

Differential item functioning

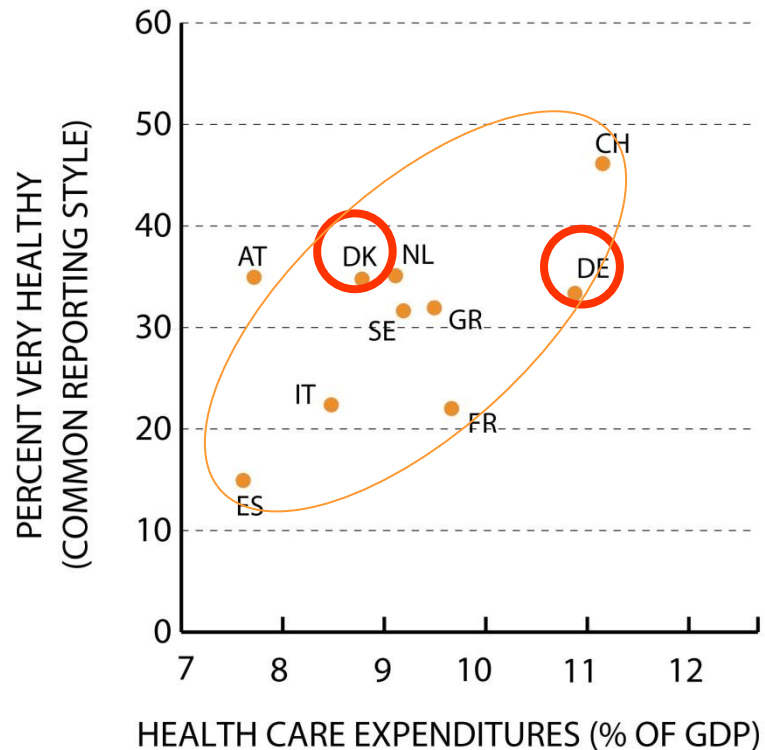
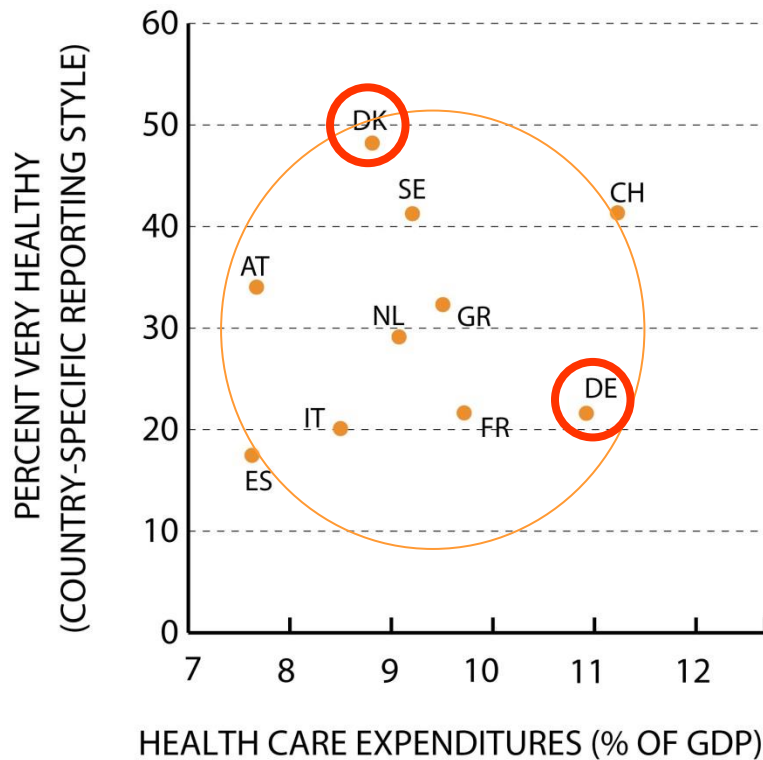


Objective measures of health



mea

Are health care expenditures wasted?



Subjective vs. objective measures of health



mea



1. The fascination of heterogeneity:

Chances and challenges of international comparisons

2. Types of data needed:

SHARE and SPLASH

3. Distilling a message:

The NBER International Social Security project

SHARE data infrastructure



9 waves of data 2004-2020

140,000 respondents aged 50+

480,000 interviews

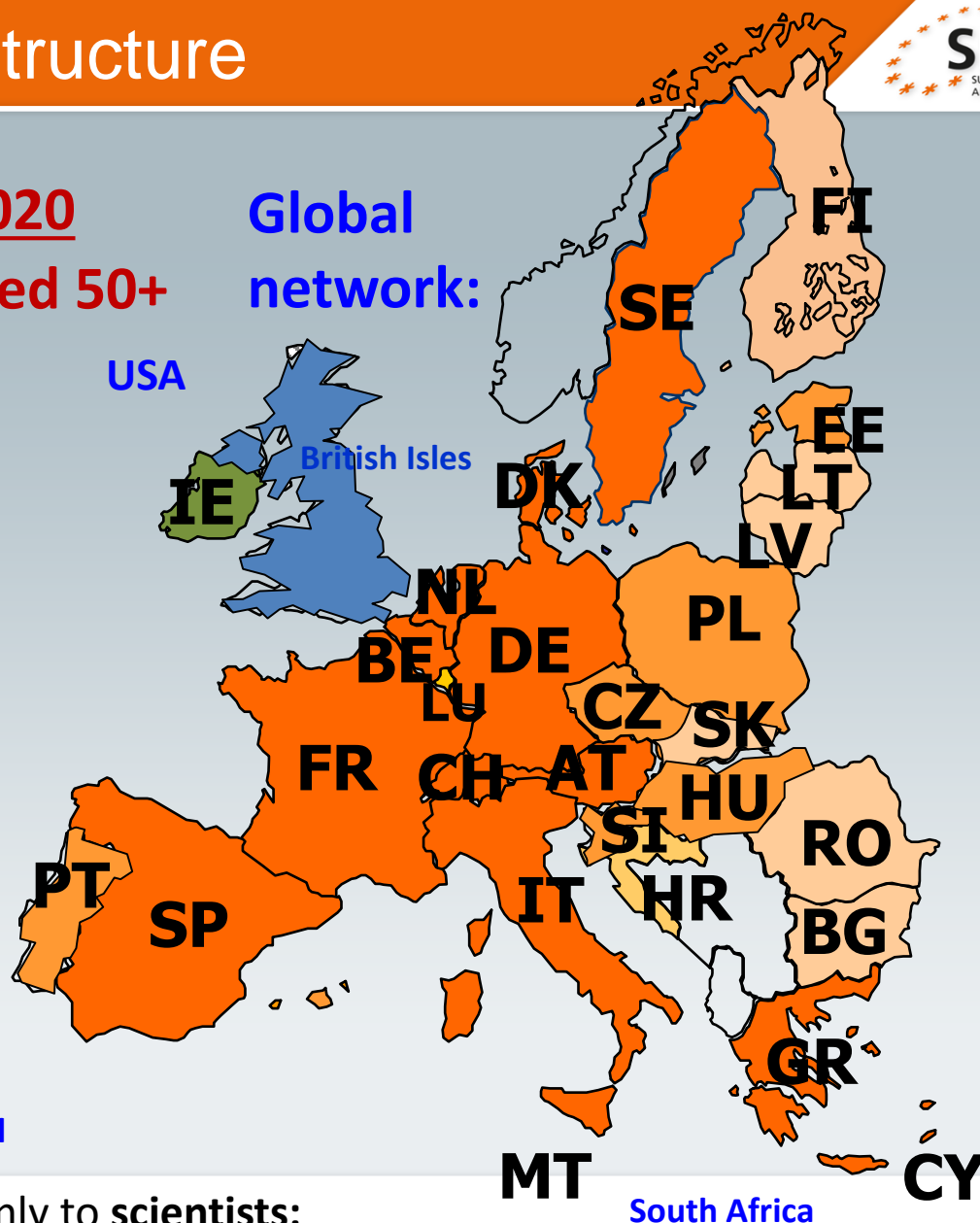
in 28 countries

120,000 retrospect life histories

95,000 punches of dried blood



Mexico, Brazil



Korea
Japan
China

India
Indonesia

South Africa

Data are **free** of charge, given only to **scientists**:

SHARE-ERIC.eu

A transdisciplinary picture of human life



- ▶ **Health, social and economic situation closely related**
- ▶ Broad range of **questions, measurements and tests**:
 - ▶ **Socio-economic status**: labor force participation, retirement, income (amount and sources), wealth, housing, consumption, pension claims, expectations, well-being
 - ▶ **Health**: subjective-objective (self-report, ADL/IADL, conditions, physical performance tests, biomarkers: HbA1c, CRP, Lipids, Cytokines), physical-mental (cognition, MMSE, CES-D, Euro-D), health behaviors, health utilization and insurance coverage
 - ▶ **Social participation**: activities (volunteering), family and social networks (size and intensity), help (time, money)
- ▶ **Face-to-face interviews** by trained interviewers, every 2 years
- ▶ Link to past and current **health, social and economic policies**

SPLASH collects data on **institutional context** to ease **cross-country evaluation of welfare state policies**



Longitudinal Survey Strategy



1. Life course background

SHARE waves 2004 – 2018

Retrospective life histories including parental and childhood conditions

2. Immediate pre-Corona status

Face-to-face interviews in Wave 8, stopped in March 2020 after about 70% of sample

3. First SHARE Corona Telephone Survey in June/July 2020

Health, work, economic and social conditions during the first wave of the pandemic

4. Second SHARE Corona Telephone Survey in June/July 2021

Health, work, economic and social conditions during the “third wave” of the pandemic

5. Immediate post-Corona status

Face-to-face interviews in Wave 9, planned for November 2021



mea

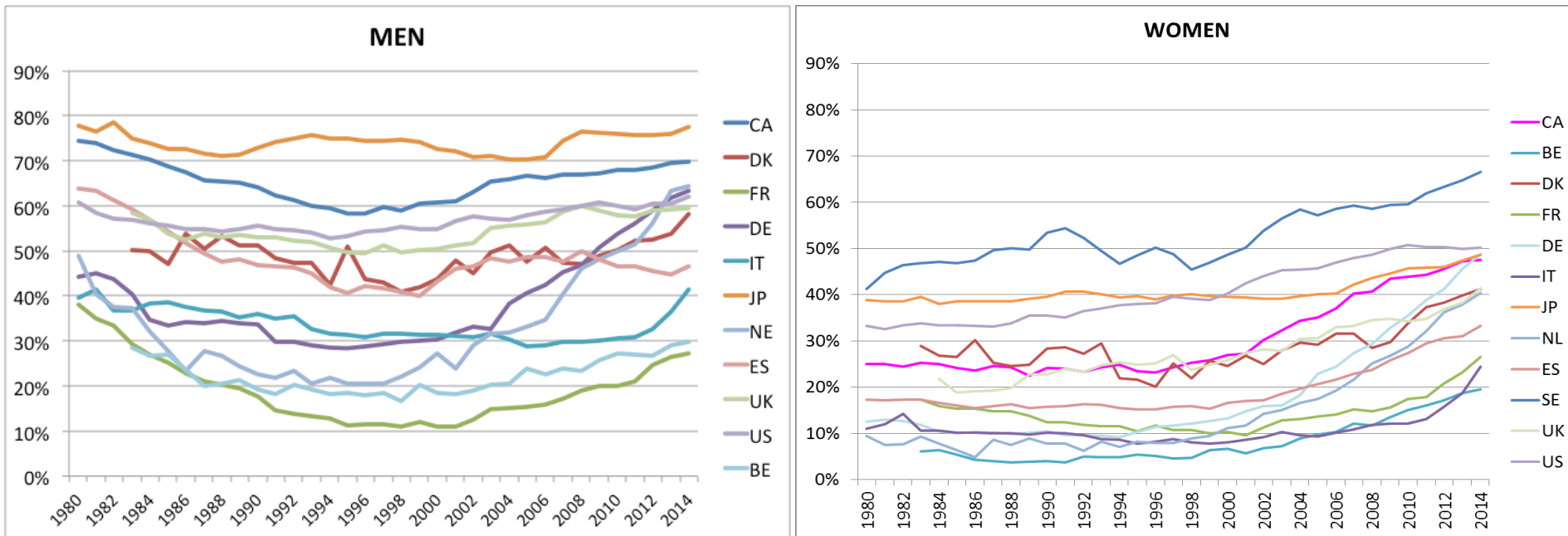
- 1. The fascination of heterogeneity:
Chances and challenges of international
comparisons**
- 2. Types of data needed:
SHARE and SPLASH**
- 3. Distilling a message:
The NBER International Social Security project**



mea

Motivation

Striking reversal of labor force participation among older workers:



Various social security and labor market reforms at the same time

How much of the labor force trends can be explained by the changing incentives of social security policy?

**mea**

Participants

1. Germany
2. United States
3. United Kingdom
4. Canada
5. Netherlands
6. Italy
7. Belgium
8. France
9. Japan
10. Spain
11. Sweden
12. Denmark

**mea**

Highly structured

1. Which relevant reforms have taken place

- ▶ *Structured* verbal descriptions; use *same* language; *update*



1992, 2001, 2004, 2007, 2014, 2017

2. Quantitative policy parameters

- ▶ EEA, NEA, FRA, actuarial adjustments, replacement rate,...
- ▶ by socio-econ characteristics, by pathway, by sector



1992, 2001, 2004, 2007, 2014, 2017

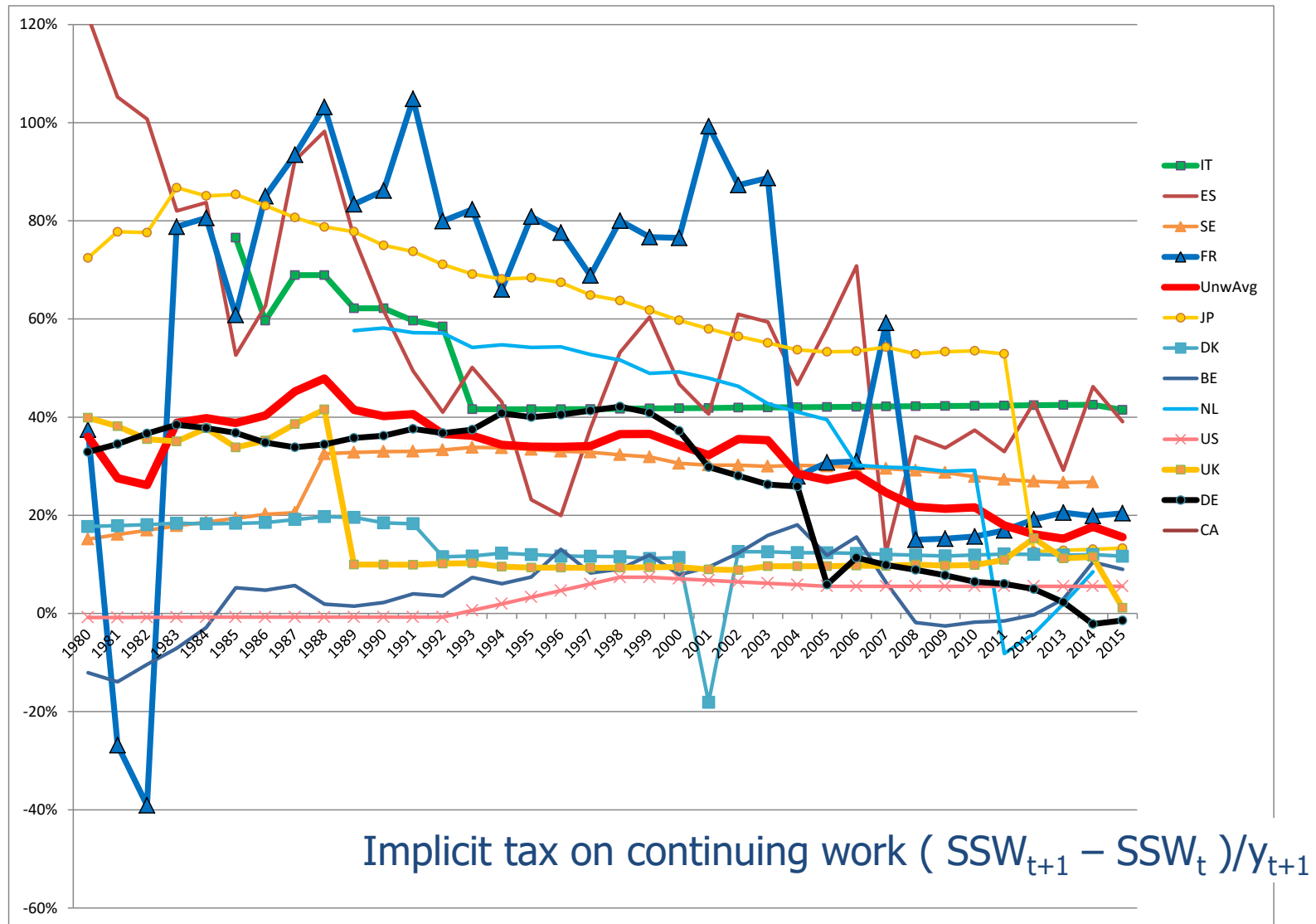
3. Economic indicators

- ▶ Implicit tax on continuing work ($SSW_{t+1} - SSW_t$)/ y_{t+1}



mea

Find signal

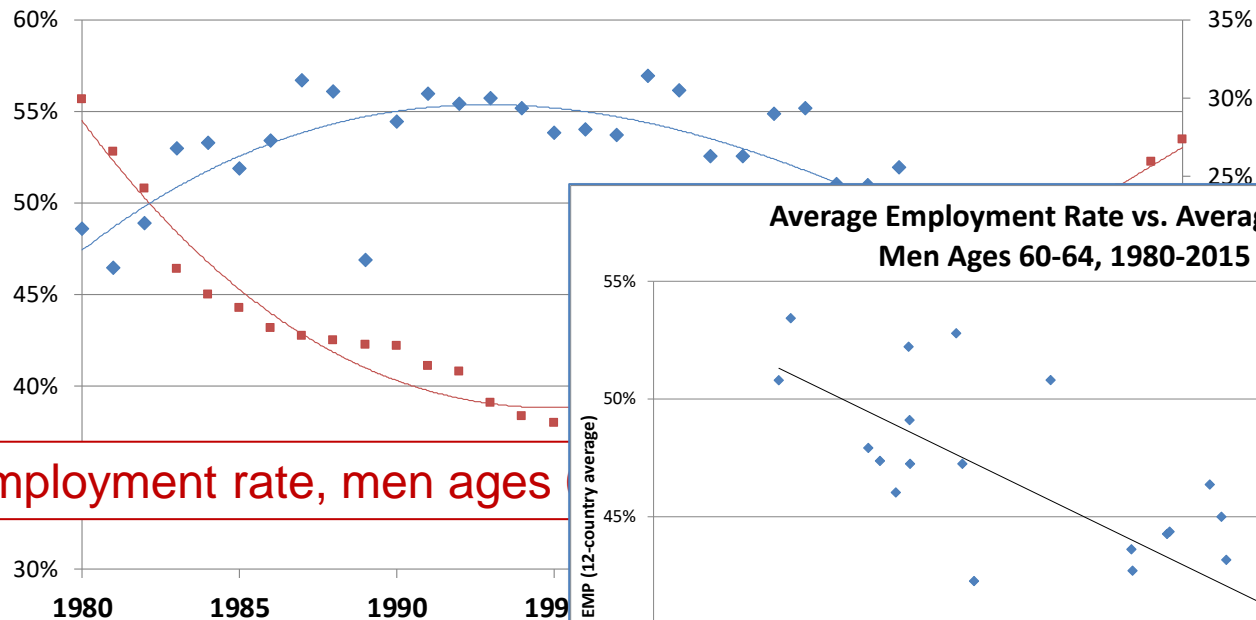




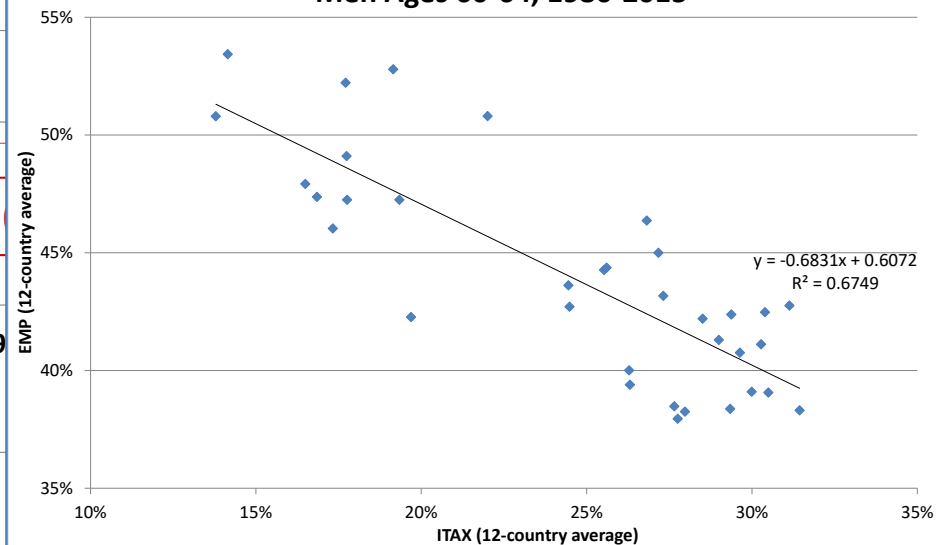
mea

Result

Average financial loss when postponing retirement (right scale)



Average Employment Rate vs. Average ITAX,
Men Ages 60-64, 1980-2015





General lessons

- Incentive variables from **SPLASH** data base
- Which **micro data**? SHARE-HRS-ELSA-JSTAR, EU-LFS, EU-SILC
- Which **reforms** are covered? Identification!
- Which **covariates** are available? Health, education, other HH members, tax rate, benefit type?
- **Simple probit/logit regressions:**
 - $\text{Prob}(\text{receives pension}) = f(\text{ITAX; age, covariates})$
 - $\text{Prob}(\text{out of LF}) = f(\text{ITAX; age, covariates})$



mea

The art of meaningful international comparisons in population aging research

- 1. The fascination of heterogeneity:
Chances and challenges of international comparisons**
- 2. Types of data needed:
SHARE and SPLASH**
- 3. Distilling a message:
The NBER International Social Security project**