

The views expressed in this presentation are the views of the author/s and do not necessarily reflect the views or policies of the Asian Development Bank, or its Board of Governors, or the governments they represent. ADB does not guarantee the accuracy of the data included in this presentation and accepts no responsibility for any consequence of their use. The countries listed in this presentation do not imply any view on ADB's part as to sovereignty or independent status or necessarily conform to ADB's terminology.

ADB

Asian Development Bank Opportunities

Transport Sector Support

August 2021

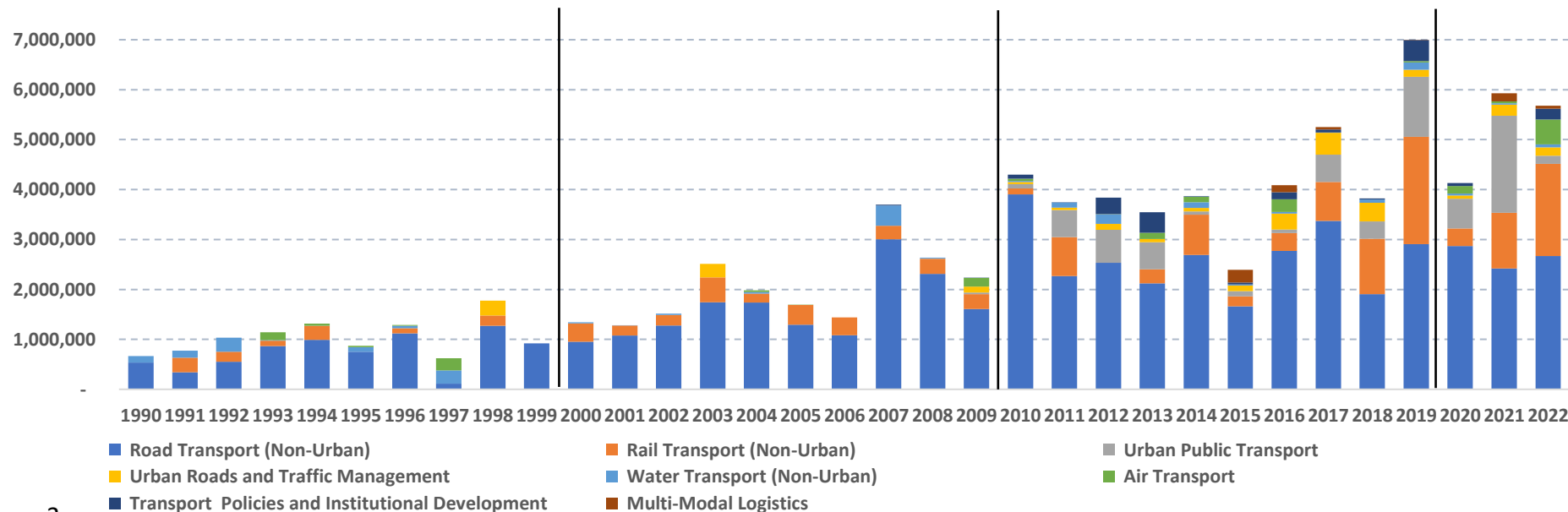
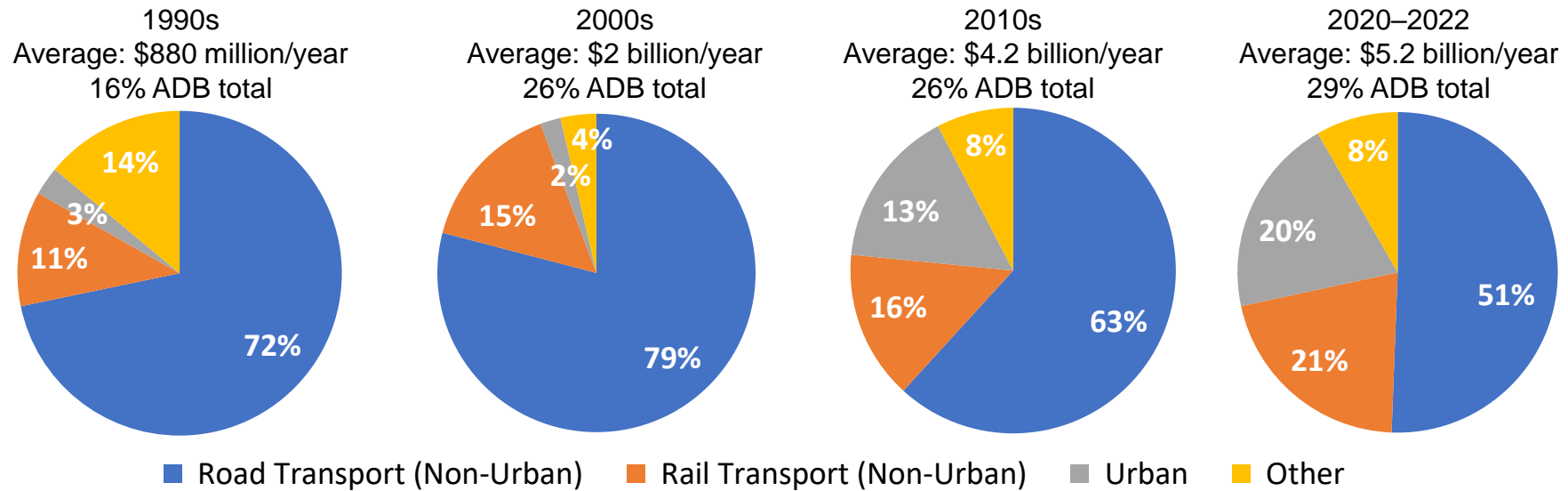
Presented by Jamie Leather, Chief of Transport Sector Group, ADB

BUSINESS
OPPORTUNITIES



Transport Sector Portfolio

Transport Investments by Subsector 1990-2022 (loans and grants)





Transport Sector Pipeline

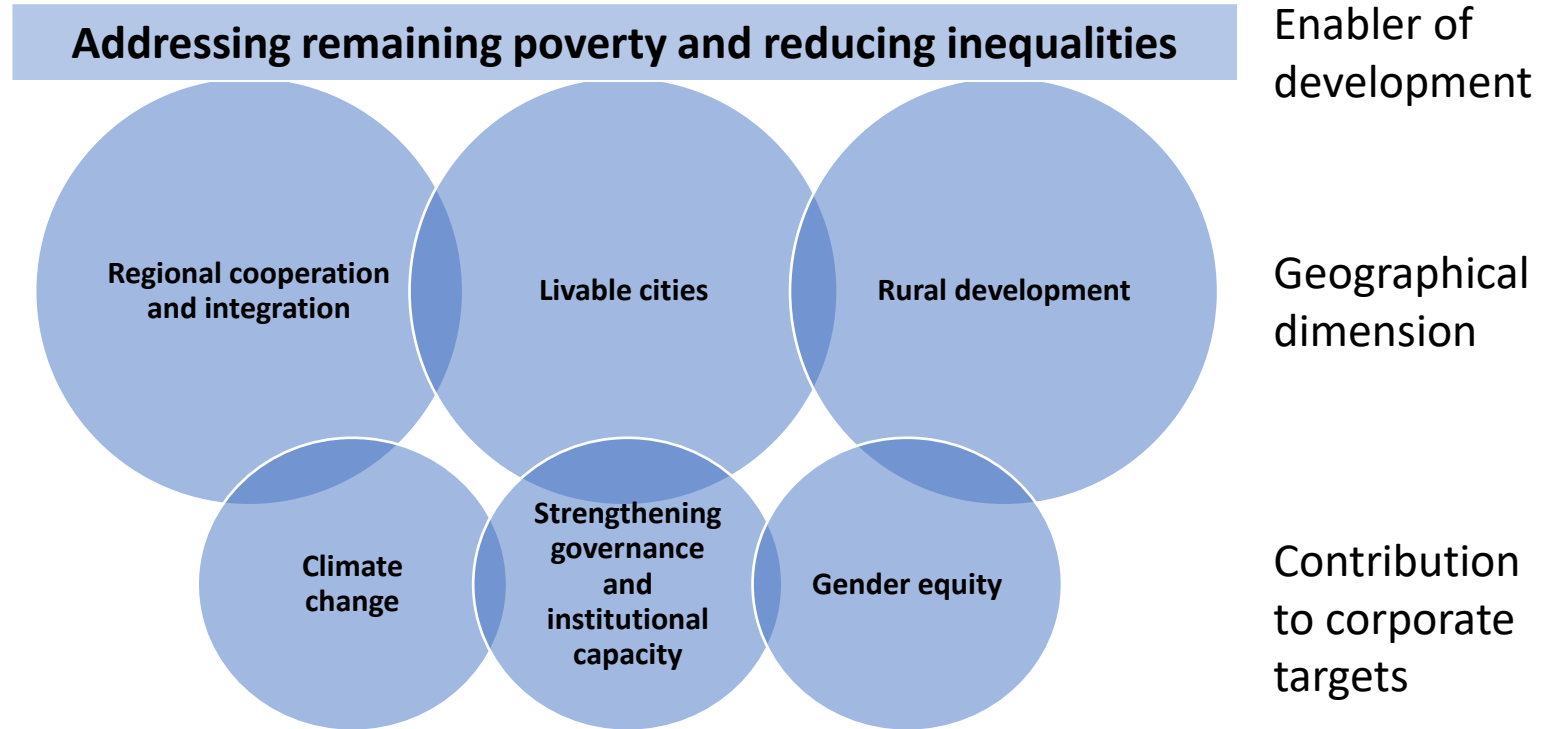
ADB

	2019	2020	2021	2022
Number of Projects	35	Firm: 32 Standby: 17	Firm: 32 Standby: 23	Firm: 37 Standby: 14
Lending amount (Standby)	\$6,997M (31%)	\$4,130M (22%) \$3,305M	\$5,925M (32%) \$5,279M	\$5,677M (35%) \$3,536M
Total Lending	\$22,545M	\$19,204M	\$18,537M	\$16,206M
Sub-sector breakdown	<div> <div>Road Transport (Non-Urban)</div> <div>Rail Transport (Non-Urban)</div> <div>Total Urban</div> <div>Total Others</div> </div>			

Source: WPBF 2020-2022

Transport Sector Group overview (2)

Transport in an enabler of development
with direct links to Strategy 2030 Operational Priorities



“Underdeveloped transportation networks restrict the flow of people, goods and service. Rehabilitation and better management and maintenance of infrastructure assets are essential.” (ADB, Strategy 2030)



Strategy 2030 and transport



- Transport involved in all 7 priority areas
 - Livable cities
 - Rural development
 - Regional connectivity
 - Cross cutting themes
 - Climate change/environment
 - Governance
 - Poverty
 - Gender
- Approaches to support
 - Private sector operations
 - Catalyzing and mobilizing finance
 - Knowledge

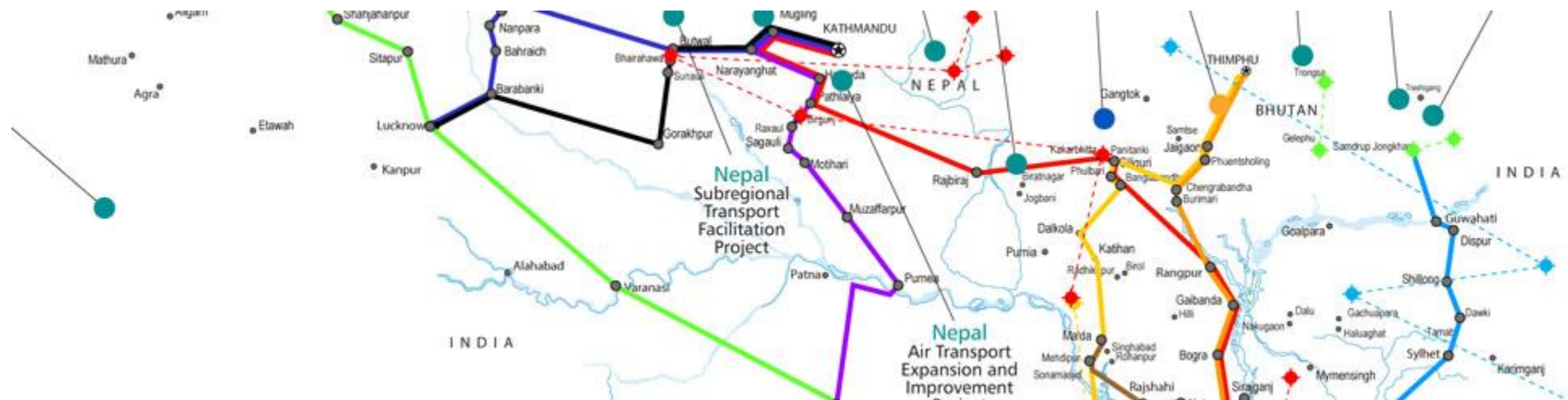
CENTRAL ASIA REGIONAL ECONOMIC COOPERATION IN TRANSPORT



Transport Sector Strategy for Central and West Asia

- Focus on CAREC Program – Central Asia Regional Economic Cooperation Program
- Rehabilitation of roads and railway network to enhance regional connectivity
- Development of economic corridors
- Development of border infrastructure to enable efficiency in trade
- Road maintenance and road safety

SARD



Upcoming Transport Assistance

Mass transit / Urban Transport

- Bangalore Metro (urban transport / mass transit)
- Chennai Metro (urban transport / mass transit)
- Dhaka Metro (urban transport / mass transit)
- Delhi – Meerut Rapid Transit System: India's National Capital region Future MFF Tranches
- Karachi mass transit system

Types of assistance

- Project preparation (Technical Assistance)
- Planning and design
- Civil works
- Electrical and mechanical
- Rolling stock
- Environmental and social protection



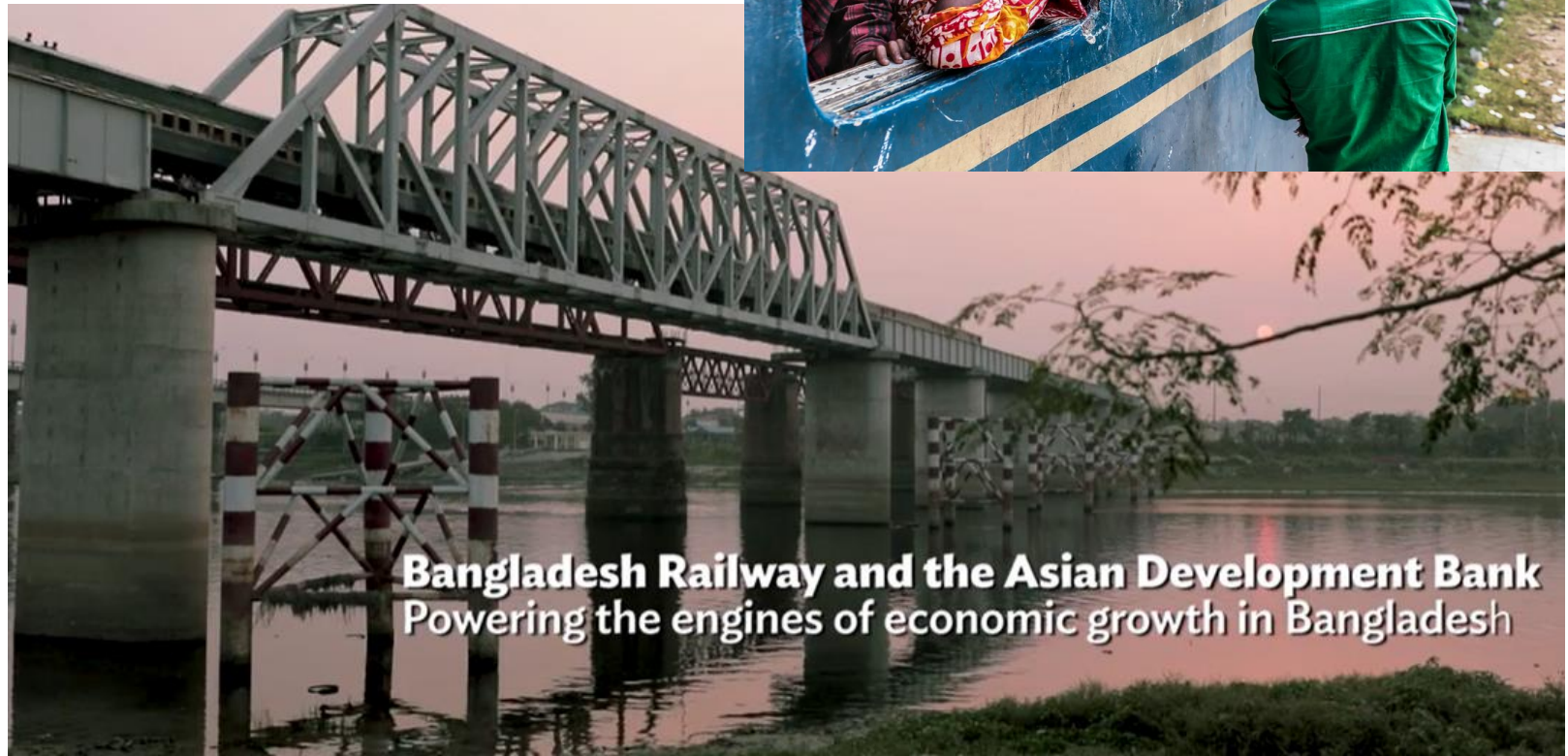
Upcoming Transport Assistance

Rail in Bangladesh

- SASEC Tongi Akhaura dual gauge project
- SASEC Laksam Chattogram
- SASEC Chittagong-Cox Bazar

Types of assistance

- Capacity Development
- Technical Assistance
- System improvements
- Civil works and rolling stock



Bangladesh Railway and the Asian Development Bank
Powering the engines of economic growth in Bangladesh

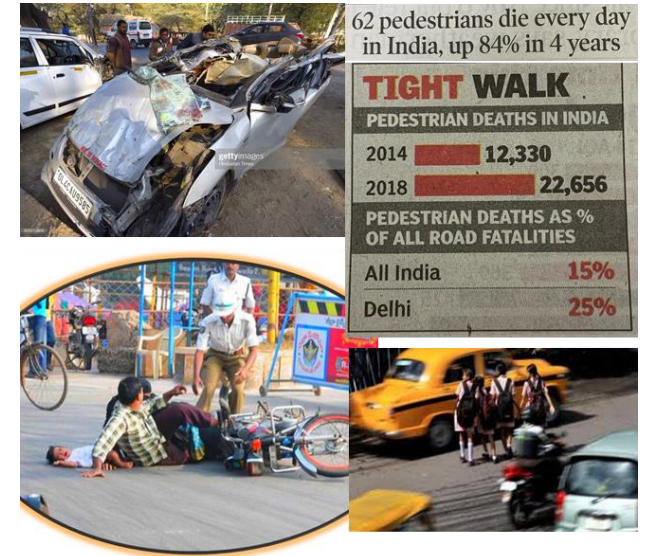
Upcoming Transport Assistance

Road Safety

- India: National Road Safety program

Road projects

- Economic corridors in India
- SASEC corridors in Bangladesh
- Dhaka Sylhet



Southeast Asia Region Overview

SERD



Region/Country Strategy

CAM	Support to deepening GMS corridor connectivity and developing multi-model transport projects
INO	Continue dialogue with the Government for possible lending operations for transport projects in various sub-sectors
LAO	Address challenges of: (i) maintenance of national road network, and (ii) increasing urban traffic congestion
PHI	Address challenges of: (missing links) (i) urban transport congestion (ii) institutional issue
THA	Continue dialogue with the Government for possible lending operations for mass rapid transit development
VIE	Focus to improve the ongoing portfolio implementation and continue support to enhancing GMS connectivity and climate change resilient infrastructure
MYA	Support to improving the national highway network, railway and building institutional capacity

EARD

Country Strategies

- **People's Republic of China**

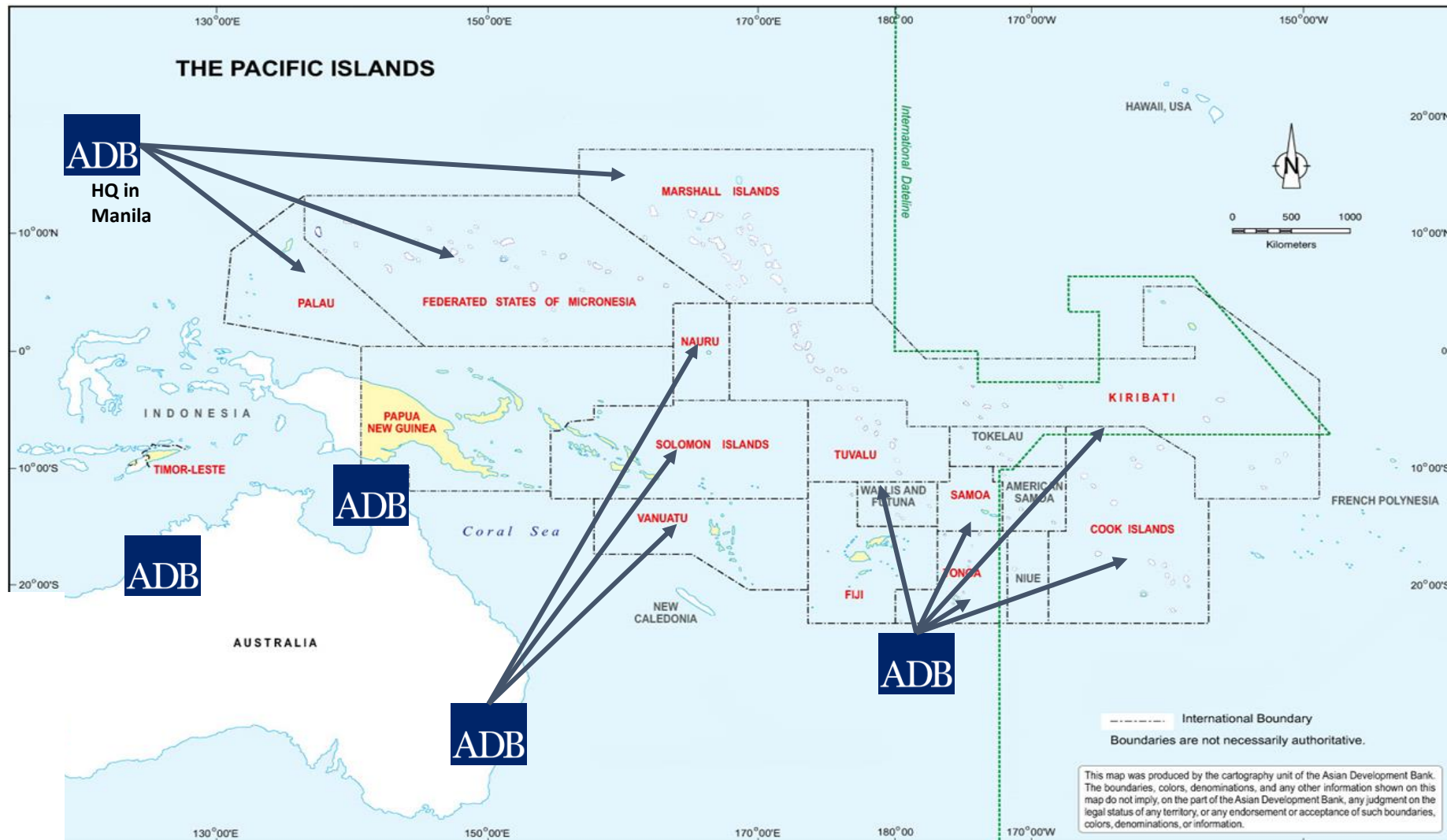
- Promote inclusive growth and environmental sustainability
- Support public transport, low carbon modes and energy efficient technology

- **Mongolia**

- Enhance connectivity for regional trade development
- Connect rural population to markets and public services
- Provide an efficient and affordable urban transport system

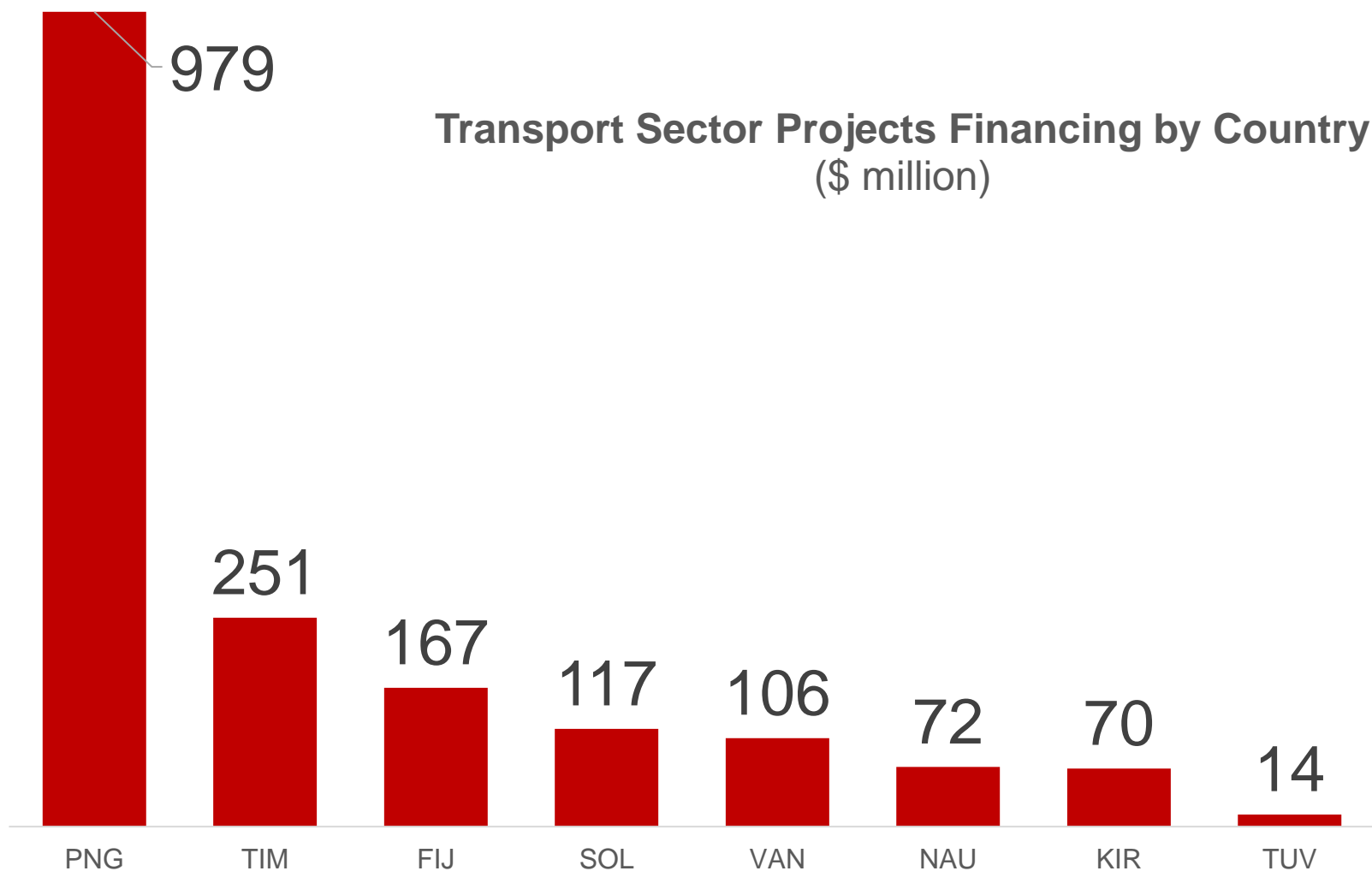


Pacific Department



ADB offices in the Pacific

**Active project: \$1,776 million;
technical assistance: \$15 million**



Country and subsector coverage (ongoing operations)

Fiji: arterial and rural roads, streetlights, and bridges, jetties

Kiribati: roads

Nauru: port development

PNG: primary national roads and highways, provincial roads, bridges, international port, maritime infrastructure (wharf) and safety, domestic airports, shipping services

Solomon Islands: national roads and bridges, ports, wharfs, shipping services

Timor-Leste: national roads and highways

Tuvalu: outer island maritime infrastructure

Vanuatu: wharfs and shipping services, road reconstruction

Regional: trade and transport facilitation study



Key messages



- Sub-sectors
 - Roads still important (Asset Management, Road Safety)
 - Rail (National rail systems, institutions and operations)
 - Urban transport (metro, bus, NMT)
- Changing demands from clients
 - System management
 - Efficiency gains
 - Value addition
- Incorporate new technologies and uses
 - system management
 - Use of data (operators and users)
 - Emerging technologies (e-vehicles)
- Increased attention to private sector support
- Broader use of financial services to meet demands



Key messages



- Changing demands from clients
 - System management
 - Efficiency gains
 - Value addition
- Incorporate new technologies and uses
 - system management
 - Use of data (operators and users)
 - Emerging technologies (e-vehicles)
- Increased attention to private sector support
- Broader use of financial services to meet demands



Key messages



- Sub-sector focus
 - Roads still important (Regional connectivity, Asset Management, Road Safety)
 - Rail (National rail systems, institutions and operations)
 - Urban transport (metro, bus, NMT)
- Changing demands from clients
 - System management
 - Efficiency gains
 - Value addition
- Increased attention to private sector support
- Broader use of financial services to meet demands

THANK YOU!

Jamie Leather

Chief of Transport Sector Group, ADB

jleather@adb.org

