



This is not an ADB material. The views expressed in this document are the views of the author/s and/or their organizations and do not necessarily reflect the views or policies of the Asian Development Bank, or its Board of Governors, or the governments they represent. ADB does not guarantee the accuracy and/or completeness of the material's contents, and accepts no responsibility for any direct or indirect consequence of their use or reliance, whether wholly or partially. Please feel free to contact the authors directly should you have queries.

Giga: An initiative to connect every school to the Internet, and every young person to information, opportunity and choice



RIGHT NOW:

3.7 billion people do not have access to the internet

WHICH MEANS:

Exclusion and limited opportunities



Data unavailable No connectivity Moderate Good

These dots are every school in **Brazil** colored by the quality of **internet access**

With the launch of Giga in late 2019, UNICEF and ITU set a goal of providing connectivity to every school in the world.

We're on our way.

\$22M+

raised

from global partners including Ericsson and Dubai Cares, and the Musk Foundation

19

countries joined

to connect over 86,000 schools and more than 25.8 million students and teachers

2,900+

prototype schools connected

by Giga partners: Kenya, Sierra Leone, Kazakhstan, Brazil, OECS ... and more soon

920,000+

schools mapped across 40 countries

and all viewable on the Project Connect platform

13

partners joined

World Bank, EIB, IsDB, ADB, AIIB, GSMA, NIC.br, Ericsson, Musk Foundation, BCG, Softbank

\$200M+

funding mobilized

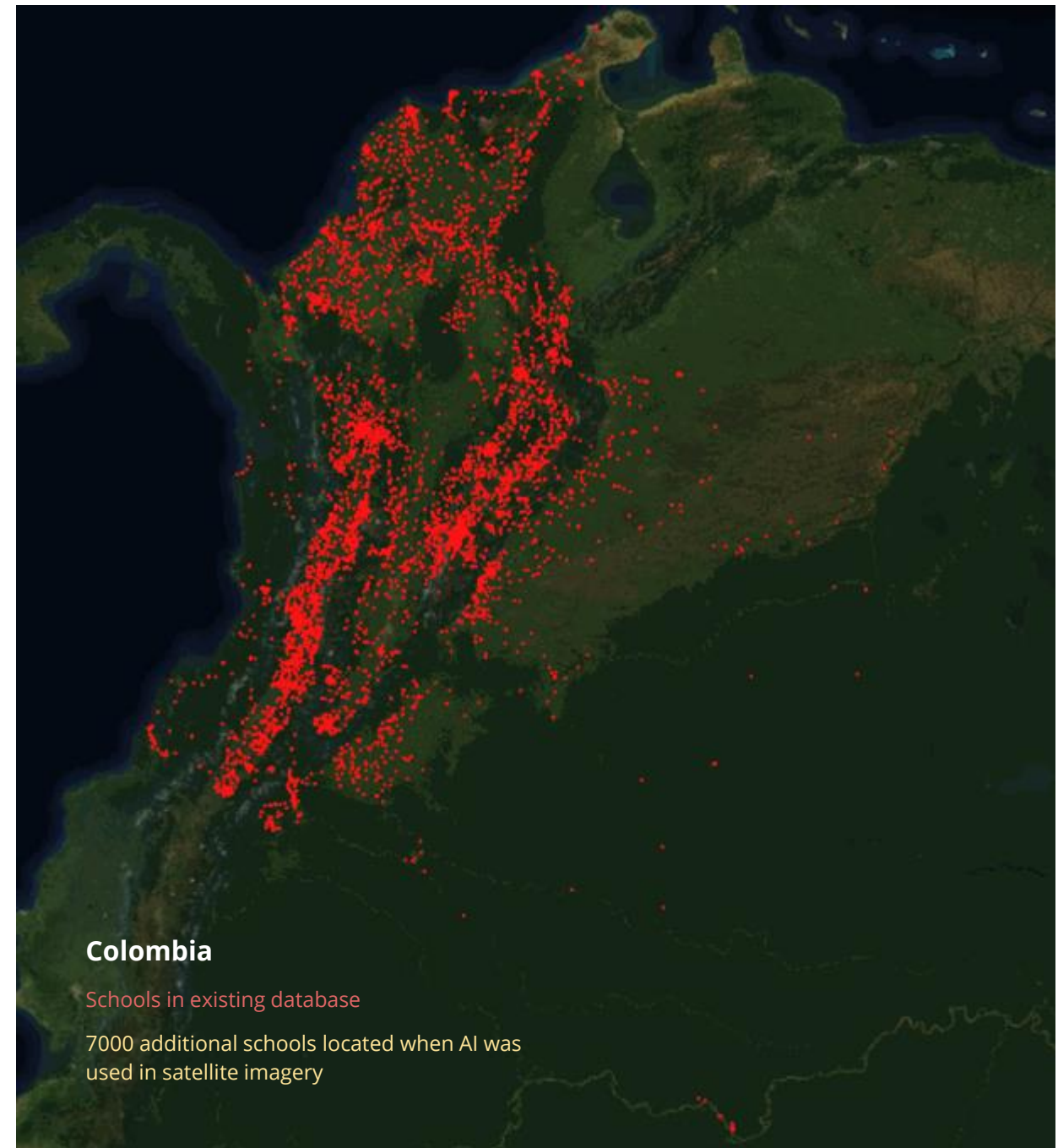
to countries and UNICEF Country Offices to accelerate connectivity



OVERVIEW

Solving big industry problems with innovative solutions

- Live [maps](#) of schools and connectivity
- Catalytic [financing](#) and enabling investment
- Better [connectivity solutions](#) with better outcomes
- Focus on [schools](#) as the entry point



COVID-19

More than 190 countries
closed schools

Putting at risk

1.6 billion students



Semaine: 20

N

Mathématiques: Les m

Leçon 12: La mes

Séance 3: Les m

- Identifier les unités de m

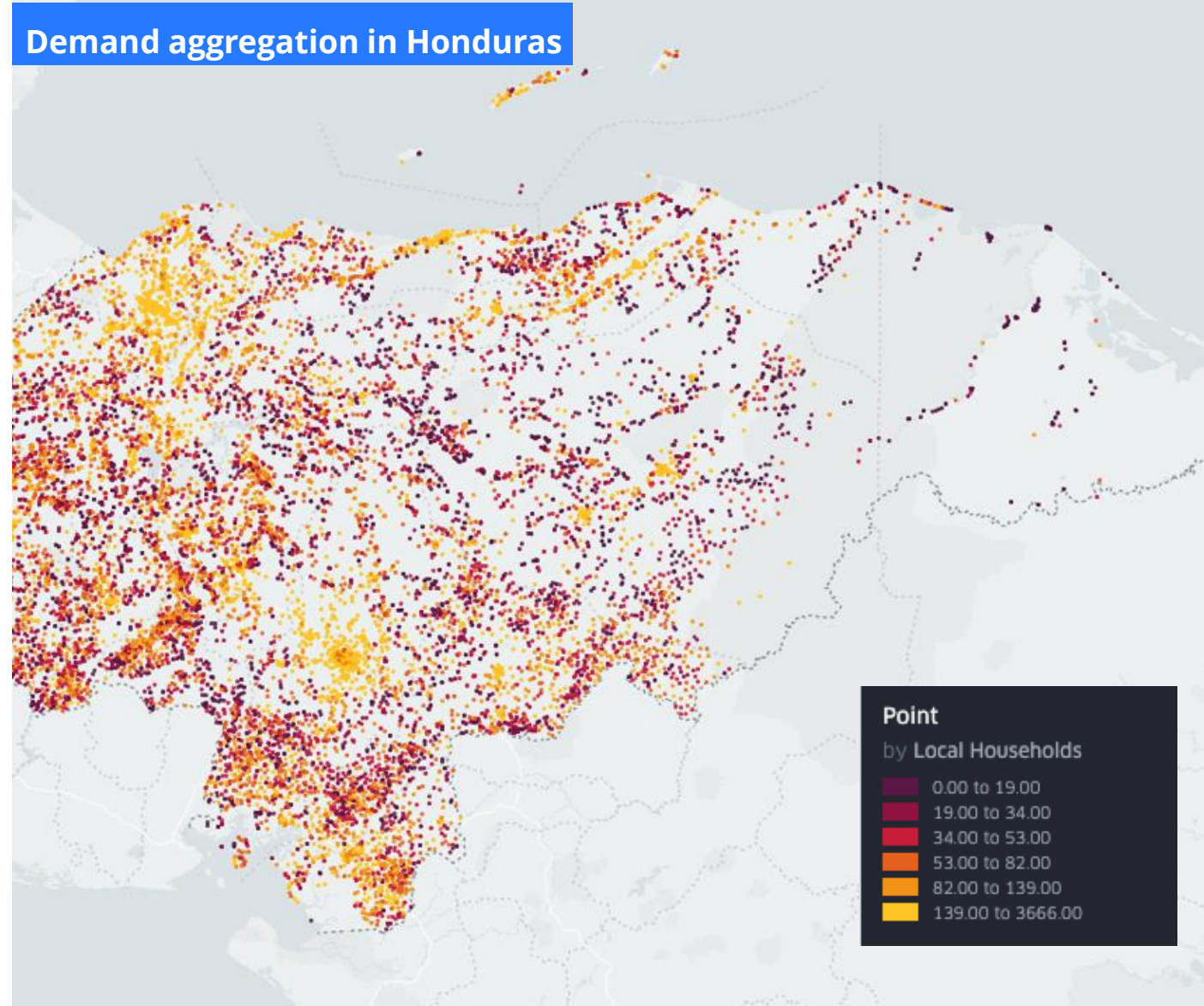
l'hectare (a), le cen

tableau des unités

ha	a	ca

Next Steps

- Continuing [mapping](#) efforts
- Working in new [regions](#) and [countries](#)
- Developing [sustainable finance](#) models
- Working with governments to [connect schools](#)



In Honduras, Giga used schools as a starting point to estimate the number of unconnected households around each school



Contact us

info@giga.partners | gigaconnect.org