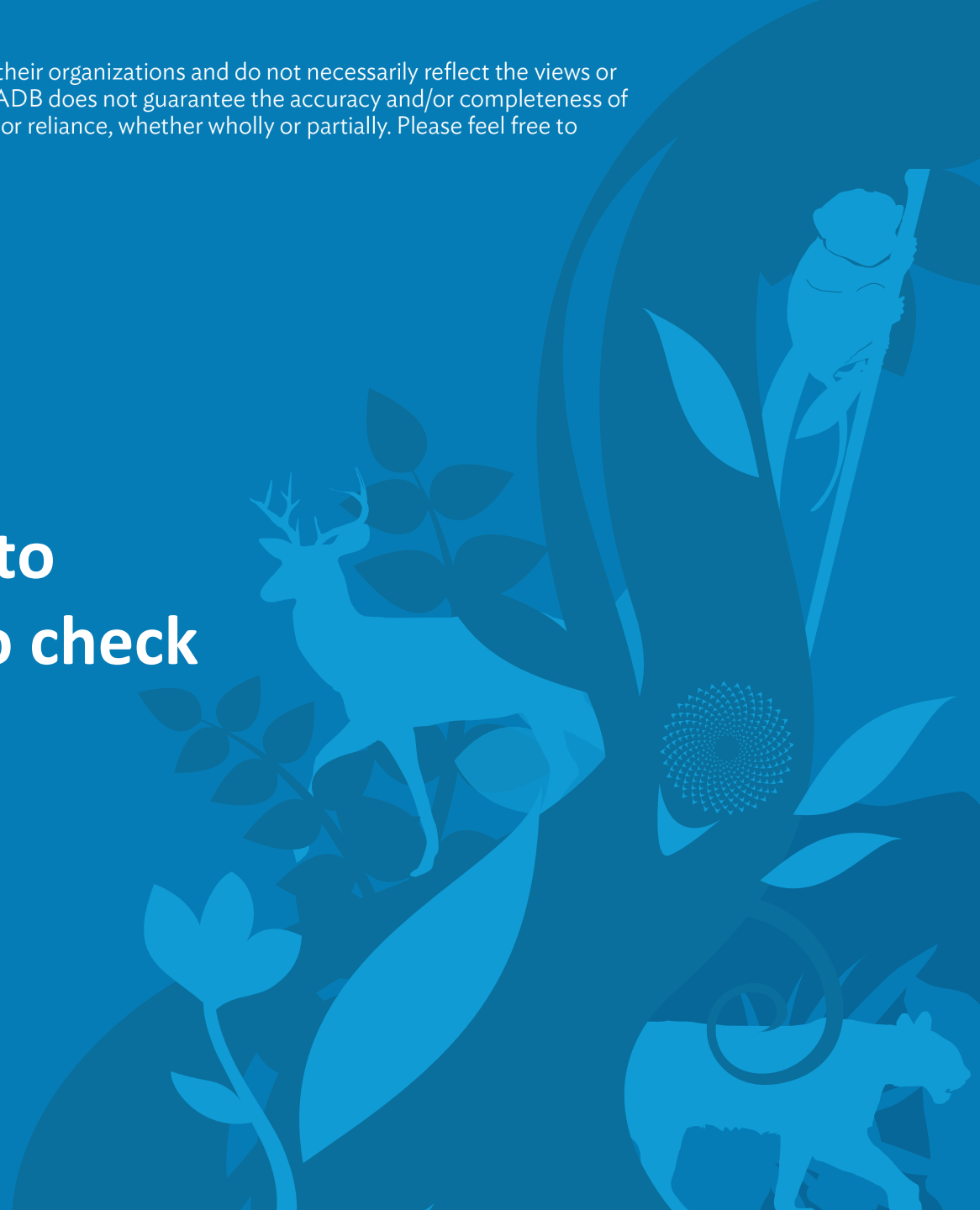


This is not an ADB material. The views expressed in this document are the views of the author/s and/or their organizations and do not necessarily reflect the views or policies of the Asian Development Bank, or its Board of Governors, or the governments they represent. ADB does not guarantee the accuracy and/or completeness of the material's contents, and accepts no responsibility for any direct or indirect consequence of their use or reliance, whether wholly or partially. Please feel free to contact the authors directly should you have queries.

# Technical Demonstration of tools to create project specific web map to check adequacy of data

**Benjamin Dorsey,**



# Outline

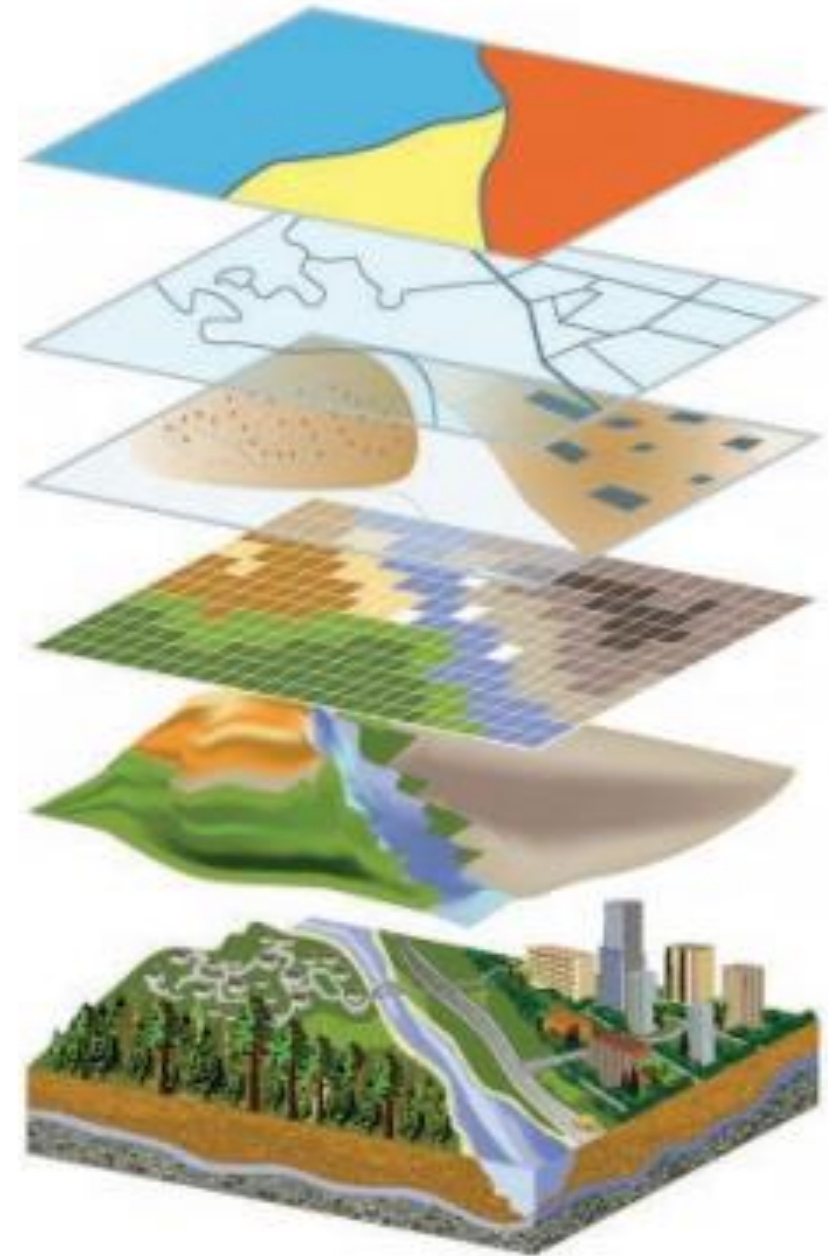
- *What is GIS and why is it so important?*
- *Software models - SAS vs FOSS and trade offs*
- *Why use web GIS*
- *Types of GIS Data and BBA*
- *Data considerations for BBA*
- *Demo ArcGIS Online exercise and website*



# What is a GIS?

## Core capabilities:

- Layers
- Visualization
- Qualitative and quantitative analysis
- GIS mapping adds meaning and context to data



How does it work?

Why web GIS?

FOSS vs SAAS



## Web GIS

Apps



Portal

Manage Geographic Knowledge  
Control Access



Web Services

Data



GIS Servers  
Authoring tools



Ready-to-Use  
Content

# Why is it crucial?

## GIS provides:

- Framework
- Process
- Shared situational awareness

DATA MANAGEMENT  
AND INTEGRATION

VISUALIZATION  
AND MAPPING

ANALYSIS AND  
MODELING



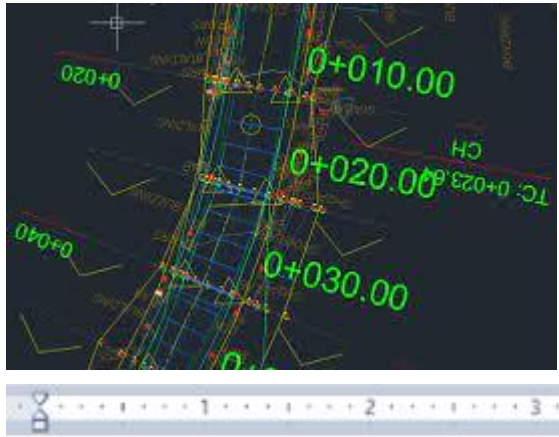
ACTION

DECISION-  
MAKING

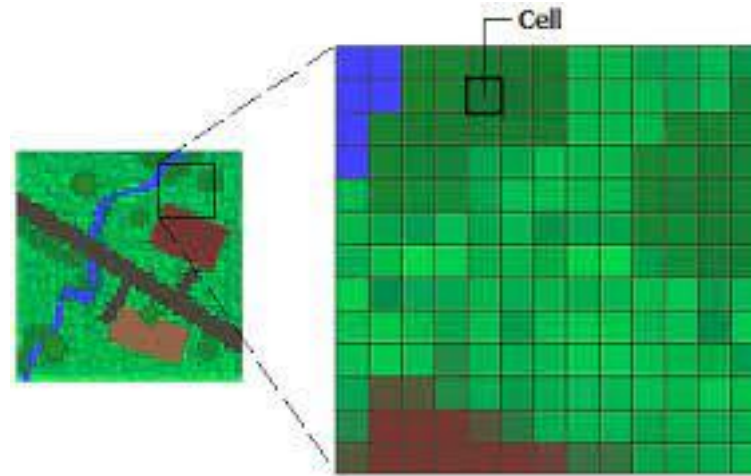
PLANNING AND  
DESIGN



# Data types in BBA



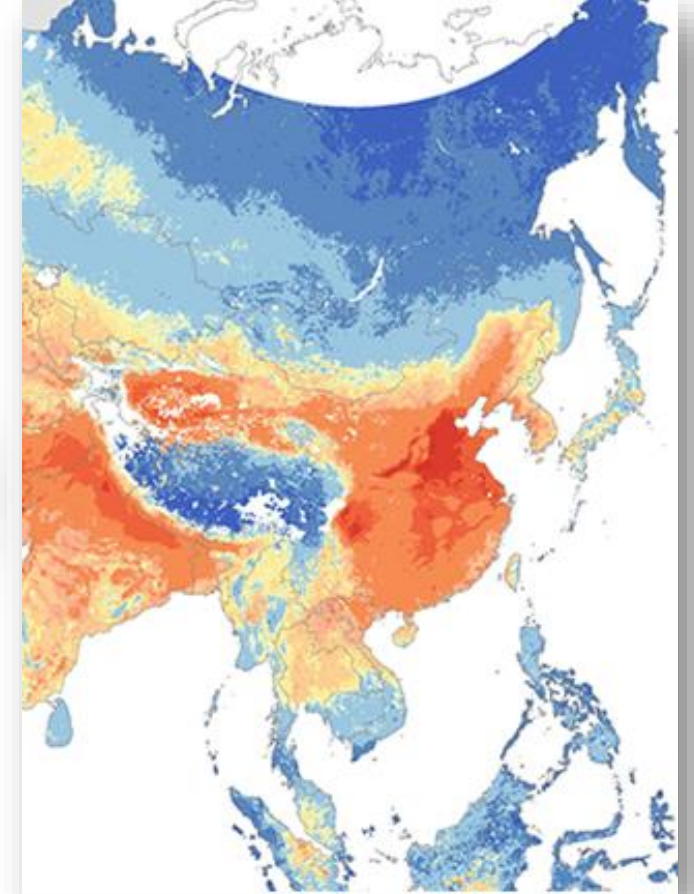
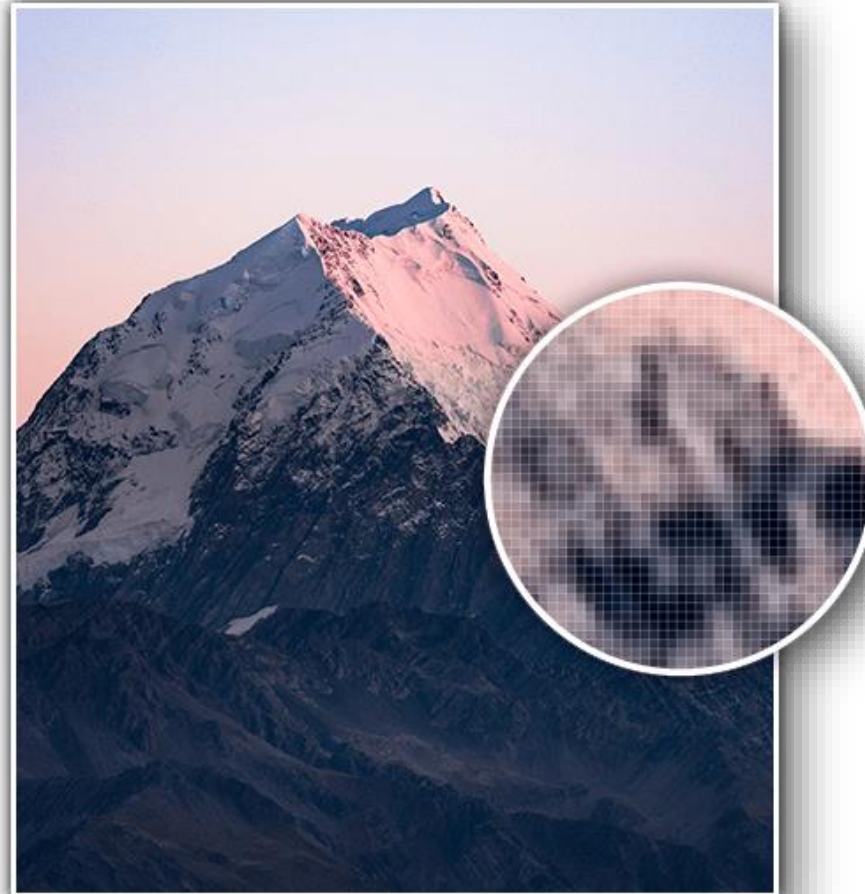
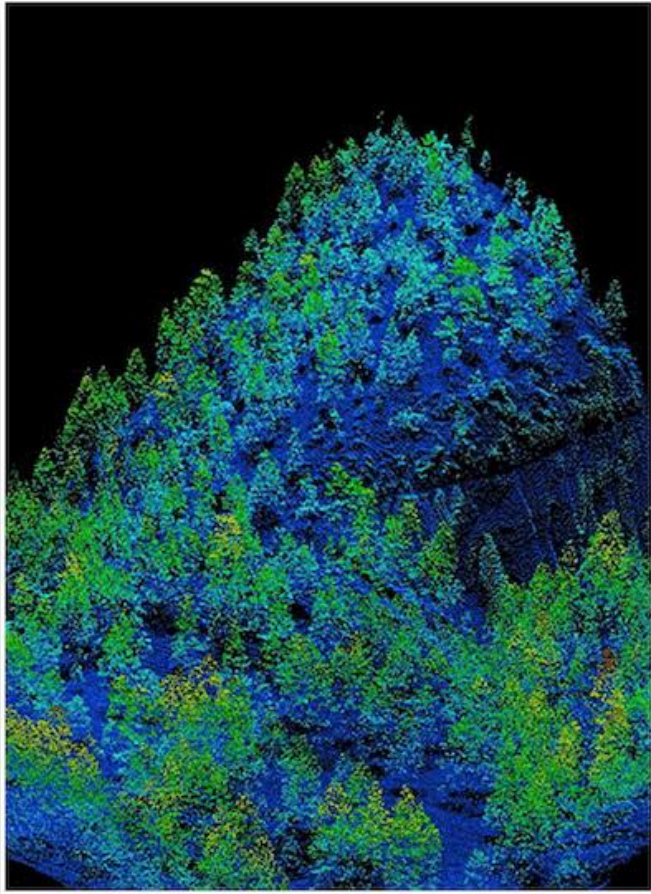
```
road_id,vertex_num,x,y  
R_1,1,3125519.412,10078088.000  
R_1,2,3125502.250,10078139.000  
R_1,3,3125396.750,10078703.000  
R_1,4,3125276.750,10079558.000  
R_1,5,3125146.750,10080483.000  
R_1,6,3125060.500,10081124.000  
R_1,7,3124969.250,10081398.000  
R_1,8,3124940.250,10081485.000  
R_1,9,3124798.000,10081834.000
```



CAD data, tabular (CSV), raster, paper  
the less structured



# Data considerations for BBA



# Demo of online tools and making a map





# Next week what is coming?

What to do when the data don't exist?

- Survey, Camera trap, LIK?
- Integration with Web GIS (Demo: Survey123)
- Communicating with Apps and Dashboards

Exercise – build your first dashboard

