



Online **ADB Sanitation Dialogue 2021**

ACCELERATING INCLUSIVE SANITATION

12–22 April 2021

Urban sanitation for all: Towards Achieving GESI in urban sanitation Learnings from the Tamil Nadu Experience

Kavita Wankhade

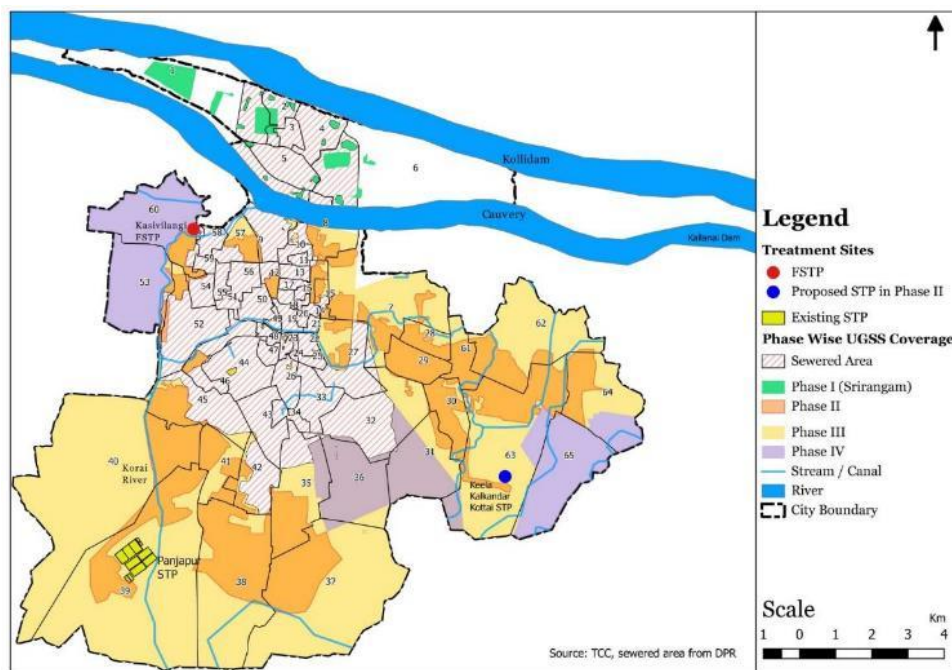
Indian Institute for Human Settlements

This is not an ADB material. The views expressed in this document are the views of the author/s and/or their organizations and do not necessarily reflect the views or policies of the Asian Development Bank or its Board of Governors, or the governments they represent. ADB does not guarantee the accuracy and/or completeness of the material's content, and accepts no responsibility for any direct or indirect consequence of their use or reliance, whether wholly or partially. Please feel free to contact the authors directly should you have queries.

Scaling FSM & Inclusion in Tamil Nadu

City Wide Inclusive Sanitation (CWIS) Trichy Launched : 2018

- Fourth largest Municipal Corporation in the state
- 10 M population living in 65 wards
- Mix of networked systems and FSM



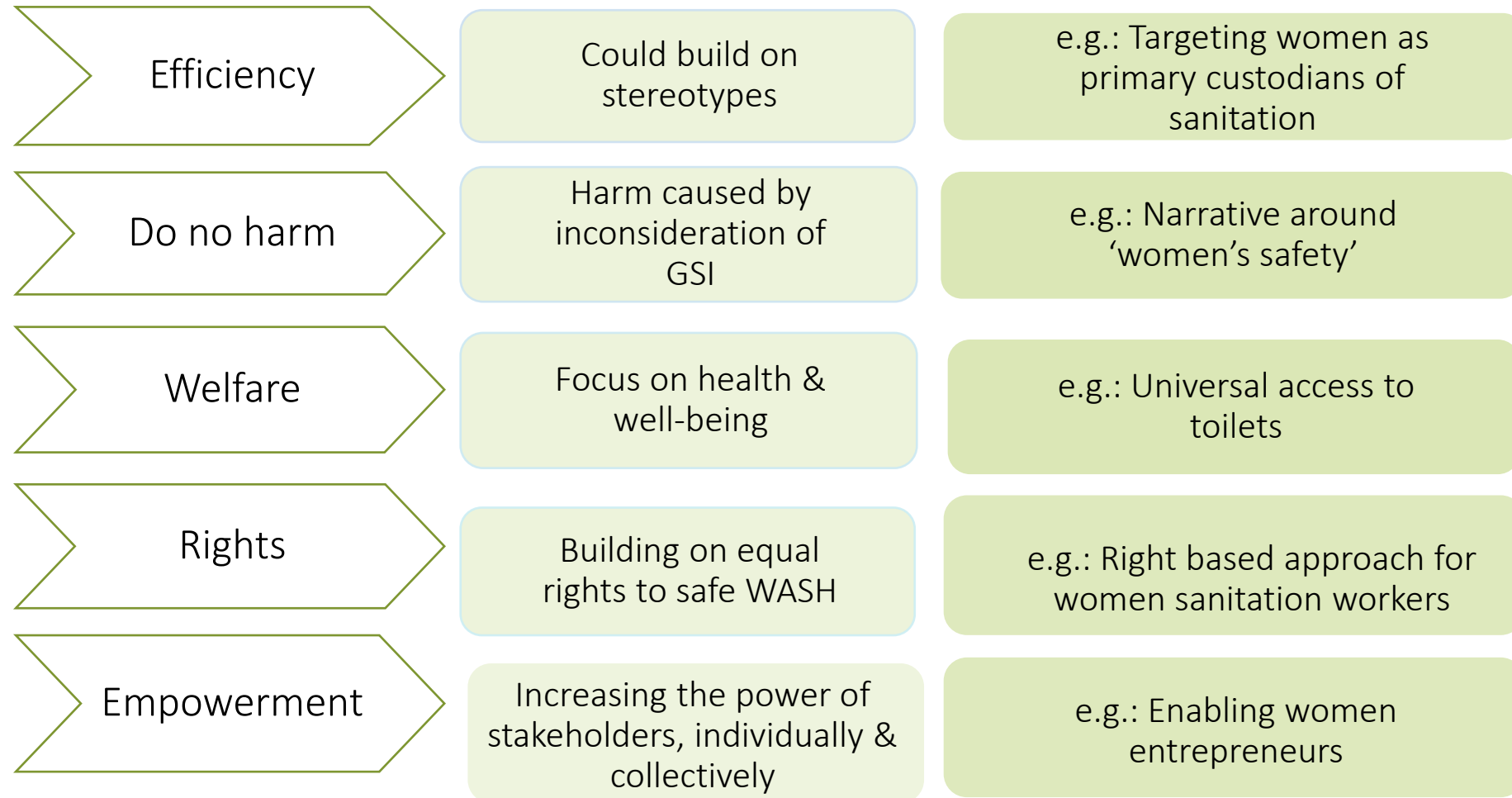
Under CWIS : Improving services to urban poor, gender integration, strengthening ULB to deliver inclusive sanitation services, developed as a knowledge hub for CWIS

TNUSSP: Supporting Tamil Nadu's Total Sanitation Mission Launched: 2015

- Technical Support Unit (TSU) for Urban Sanitation, focusing on FSM.
- Initiating state-level policies, actions and strengthening operational mechanisms.
- Selecting different urban typologies as demonstration sites:
 - Tiruchirapalli,
 - Periyanaicken-Palayam (PNP) and Narasimhanaicken-Palayam (NNP)
- Statewide scaling up based on learnings
- Engagement with multiple stakeholders
- Multi-pronged initiatives

Study Methodology: Understanding GSI across the chain

- Gender and social inclusion (GSI) concerns along the FCS is **an identified research gap**
- Study conducted in **two locations** in Tamil Nadu
- **Methods:** Field visits, interviews, and focused group discussions
- **Sample:** 118 stakeholders - 73 women, 4 transgender people and 41 men



Source: [TNUSSP, 2019](#) ³

Findings from secondary review

Most literature/research so far focusses on:

- Water : Accessibility concerns, unequal distribution of responsibility
- Rural sanitation
- Menstrual Health Management (MHM)

While sanitation programmes specifically focus on :

- Design of Individual Household Latrines (IHHL) & community/public toilets:
- Addressing the deficit of sanitation facilities in public spaces – e.g.: Right to Pee movement, Mumbai
- Women’s safety while accessing facilities

FCS vs Lenses	Efficiency <i>(Could build on stereotypes)</i>	Do no Harm <i>(Harm caused by inconsideration of GSI)</i>	Welfare <i>(Focus on health & well-being)</i>	Rights <i>(Building on equal rights to safe WASH)</i>	Empowerment <i>(Increasing the power of stakeholders)</i>
Access & Containment					
Emptying & transportation					
Treatment & re-use					

Source: TNUSSP, 2019

Illustrative GSI issues across the chain



Access & containment

- Design needs of elderly, disabled persons and children not fully addressed (*Do no Harm*)
- Women and men in construction have unequal access to training (e.g.: masonry). Women play secondary role to men in construction & earn less (*Rights*)
- Varying involvement in maintenance/oversight through community/women's groups in operation & maintenance from location to location (*Empowerment*)

Emptying & transportation

- Individual women/women's groups rarely have the capital and capacities to buy a truck and desludging equipment, hire helpers and engage in desludging operations (*Empowerment*)
- Safety of desludging helpers inadequately considered (*Do no Harm*)
- Private / contract sanitation workers lack access to social welfare schemes (*Welfare*)

Treatment & Re-use

- At decanting stations, STPs and construction sites there is no provision for toilets or menstrual hygiene products (*Welfare*)
- There are no examples of women engineers coming together to bid for contracts for constructing, maintaining and managing FSTP units (*Empowerment*)

Source: TNUSSP, 2019

Key Initiatives

ACCESS

- Improve access to gender friendly sanitation facilities in places of work, education and public spaces
- Ensuring sex-disaggregated rest rooms and bathing areas & safety for women professionals in all FSTPs/ decanting facilities
- Improving managerial skills of women involved in Community/public toilet maintenance



TRANSPORTATION

- Strengthening women workers and professionals along sanitation chain, including women led enterprises
- Entrepreneurial support extended to women DSOs for upliftment of their business port folio,



Key Initiatives

SANITATION WORKERS

- Improving occupational safety of sanitation workers
- Strengthening social security for women professionals along FCS, with a focus on sanitation workers



CELEBRATING WOMEN PROFESSIONALS

- Campaigns around women professionals in sanitation



Gender & Governance

Findings

- Imbalance in government positions, especially in senior roles across cadres.
- Absence of sex-disaggregated data to inform programmes/policies/projects
- Institutional as well as cultural, economic and societal factors limit women's opportunities and abilities to participate in decision-making
- Lack of gender responsive budgeting and assessment of gender-specific effects of expenditure & revenues
- Lack of enabling environment for taking up WASH related livelihoods (access to credit, clauses leading to possible barriers in contracting, etc)

Way Forward

Institutional Strengthening and Capacity Building

- Integrate GSI into sanitation-linked recruitment processes
- Build GSI capacities of different institutions at the State and ULB level
- Conduct capacity building workshops to sensitise officers on GSI and mainstream it in programme planning and implementation
- Establish committees to deal with harassment

Budgeting and Programming

- Allocate budgets for promoting GSI related to sanitation, and GSI training

Source: TNUSSP, 2019

To Re-cap....

- Limited evidence of GSI across the chain



- Address research gaps on GSI issues across the chain e.g., access for transgender people, decision making at household level, gendered differences for re-use

- Sanitation programming focused on 'women as users'



- Strengthen women's agency along the full cycle:
- Create opportunities for women professionals
 - Recognise challenges along the career trajectory and move towards leadership
 - Build capacities and support women entrepreneurs

- Many of the existing policies/ programmes focus on GSI from efficiency or welfare perspective
- Some actions might violate principle of 'Do No Harm' e.g., reinforcing gender roles, ensuring toilets for women safety normalises violence etc.



- Advocate for policies and guidelines on sanitation from the perspective of GSI
- Ensure gender sensitivity in programming of WASH projects

Source: TNUSSP, 2019



Link to Relevant resources:

1. TNUSSP, 2019. [Gender and Social Inclusion across the Sanitation Chain in Tamil Nadu: Assessment and Strategy](#)

Visit us at www.tnussp.co.in

@tnussp

