



# Online **ADB Sanitation Dialogue 2021**

## ACCELERATING INCLUSIVE SANITATION

12–22 April 2021

# Strategies to Keep Sanitation Services Operating:

## *An Experience from Small Town Water Supply and Sanitation Sector Project*

**Er. Ram Kumar Shrestha,**  
**Project Director**

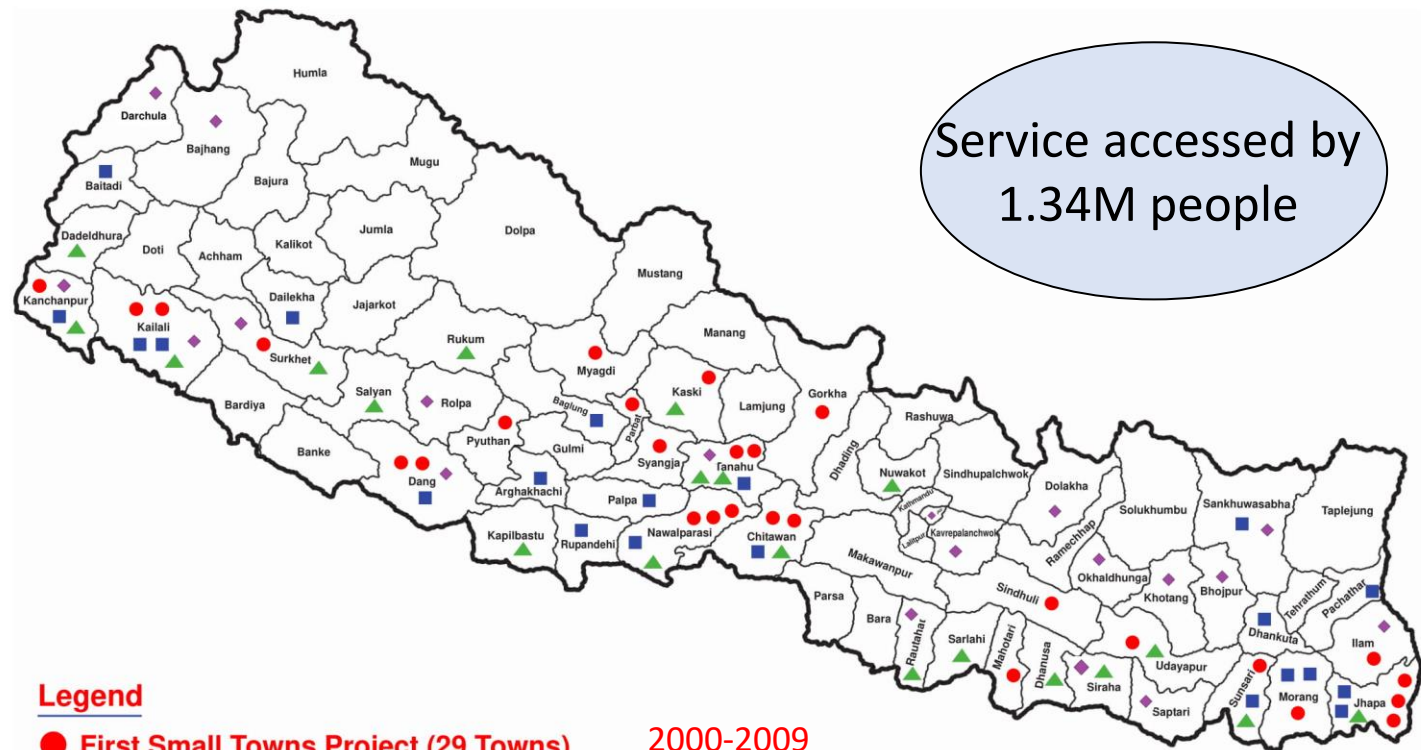
Urban Town Water Supply and Sanitation (Sector) Project  
Department of Water Supply and Sewerage Management  
Ministry of Water Supply  
Government of Nepal

This is not an ADB material. The views expressed in this document are the views of the author/s and/or their organizations and do not necessarily reflect the views or policies of the Asian Development Bank or its Board of Governors, or the governments they represent. ADB does not guarantee the accuracy and/or completeness of the material's content, and accepts no responsibility for any direct or indirect consequence of their use or reliance, whether wholly or partially. Please feel free to contact the authors directly should you have queries.



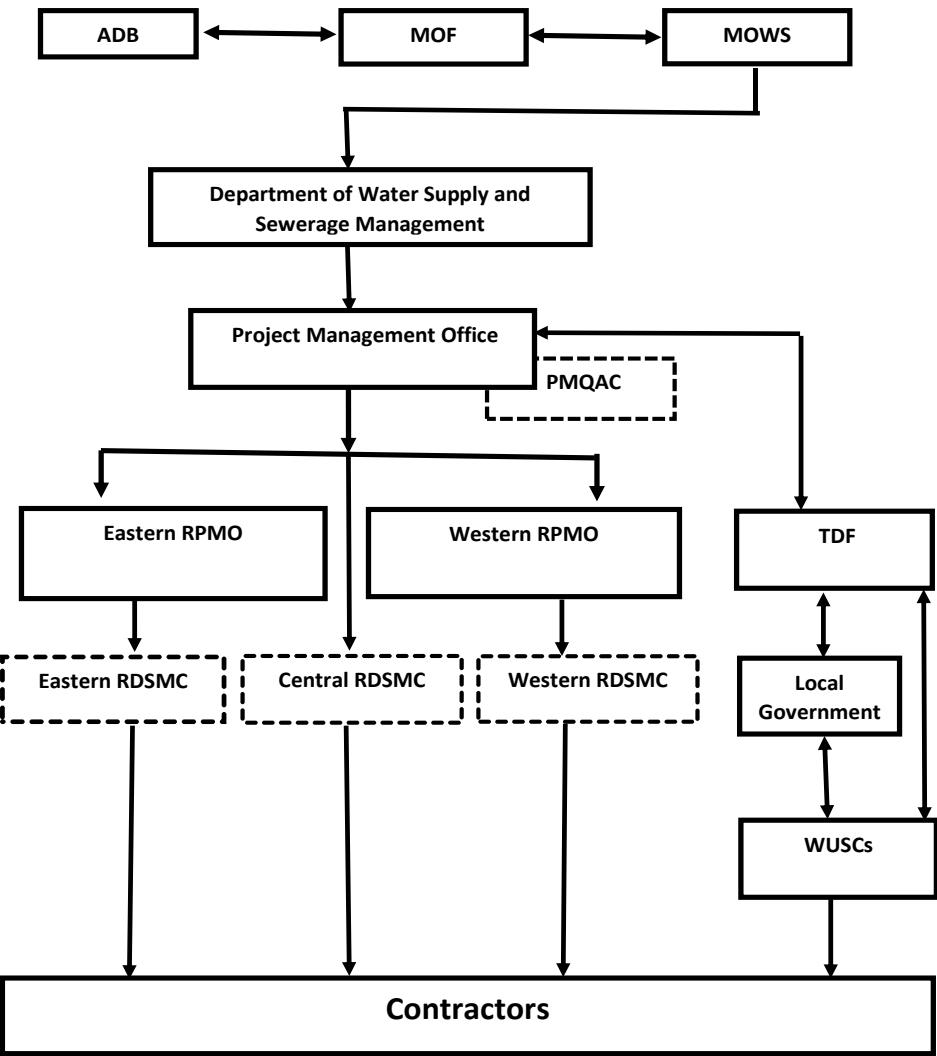
# GRADUAL EXPANSION: NEPAL SMALL TOWN WATER SUPPLY AND SANITATION SECTOR PROJECT

## NEPAL SMALL TOWNS WATER SUPPLY & SANITATION SECTOR PROJECT

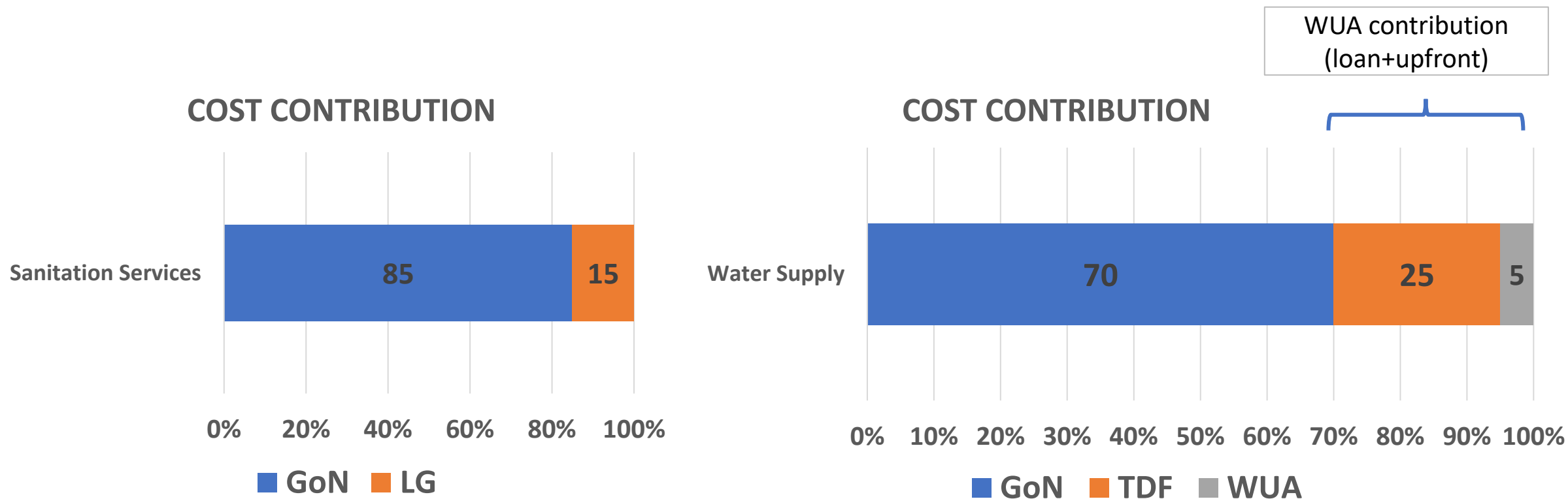


- Legend**
- First Small Towns Project (29 Towns) 2000-2009
  - Second Small Towns Project (21 Towns) 2009-2017
  - ▲ Third Small Towns Project (20 Towns) 2014-2021
  - ◆ Urban Water Supply and Sanitation Sector Project (18 Towns, 20 Projects) 2019-2024

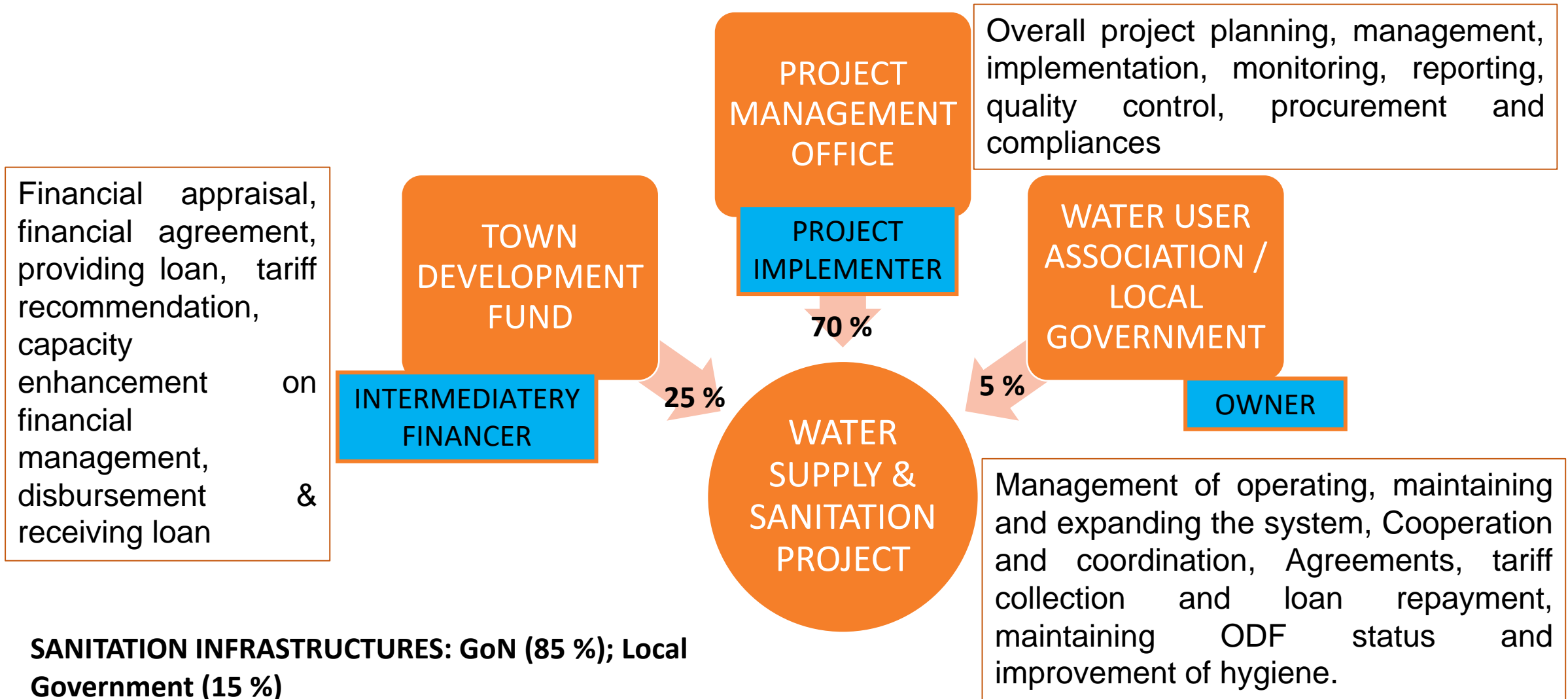
Flow chart of Implementation modality



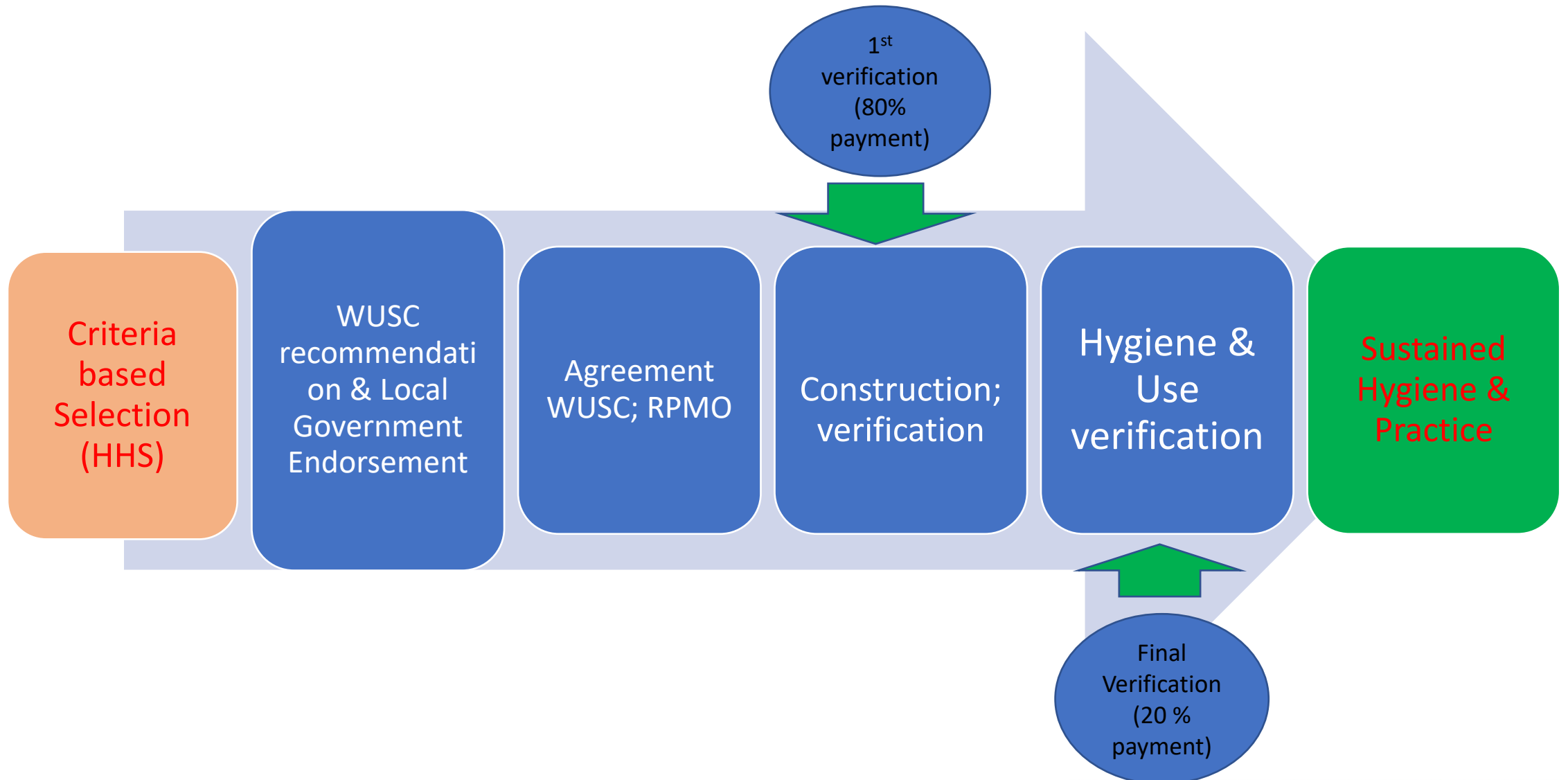
# COST SHARING MODALITY



## SHARED RESPONSIBILITIES FOR SUSTAINABILITY OF THE WaSH SERVICES



# LEAVING NO ONE BEHIND: Output Based Aid for Sanitation (HH toilet) Development





## OUTPUT BASED AID: BENEFICIARY DISCLOSURE & ORIENTATION and FACILITIES





# FAECAL SLUDGE TREATMENT PLANT\_CHARALI\_JHAPA



Septic tank



Septage Transportation



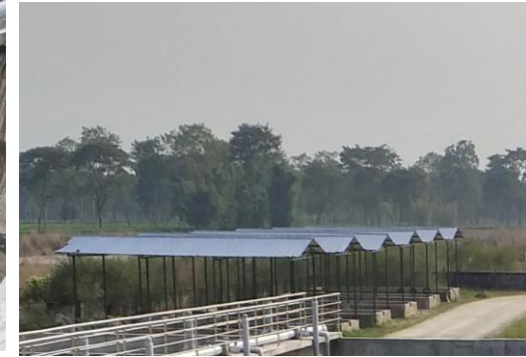
Screening



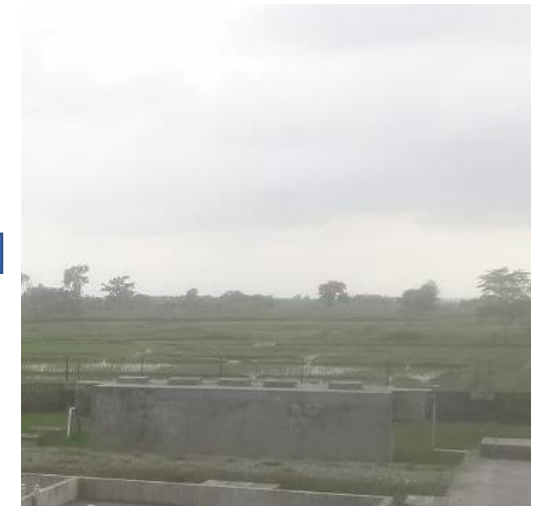
Planted Sludge Drying Bed



Solid → composting



Liquid



Anaerobic Baffle Reactor



Planted Gravel Filter



Polishing Pond

Disposal

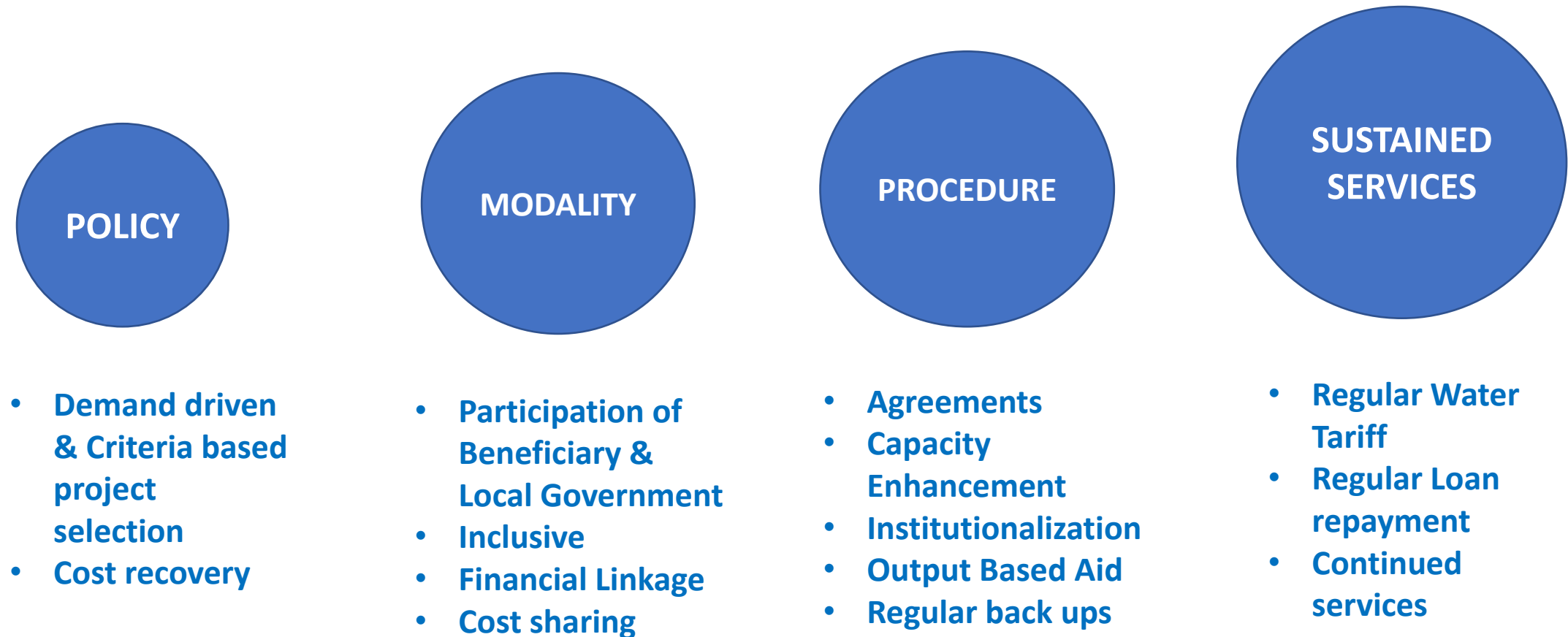


## KEY FACTORS FOR SUCCESS

- Demand driven and criteria based selection
- Beneficiary ownership and shared cost
- Inclusive Sanitation Support through “**Output Based Aid (OBA)**” is a wonderful model to “**Leaving no one behind**” concept. Same concept is also applied for “**household connection.**”
- Grievance Redress Mechanism
- Supportive Modality
- Regular monitoring, support, capacity building & knowledge sharing activities to operators.



# Ensuring Sustainable Service



## JOURNEY TO SUSTAINABLE WATER SUPPLY



Through  
LG, TDF,  
WUA  
Participa  
tion on  
cost



Lekhnath WSSP (FSTWSSSP 2000-2009)



Through Capacity enhancement and GESI Integration



Urban water supply & sanitation project (under implementation 2019-2021)

ACCELERATING INCLUSIVE SANITATION



## ACHIEVEMENTS

The Award for: Best  
Project Management  
Team 2019

The Award for: Best  
Project Team 2019

The Award for: Best  
Project Team 2019



2020

# THANK YOU