



SEADS 2021

Reinventing Smart Cities after COVID-19

Scene setting
Soren Hansen
17.03.2021

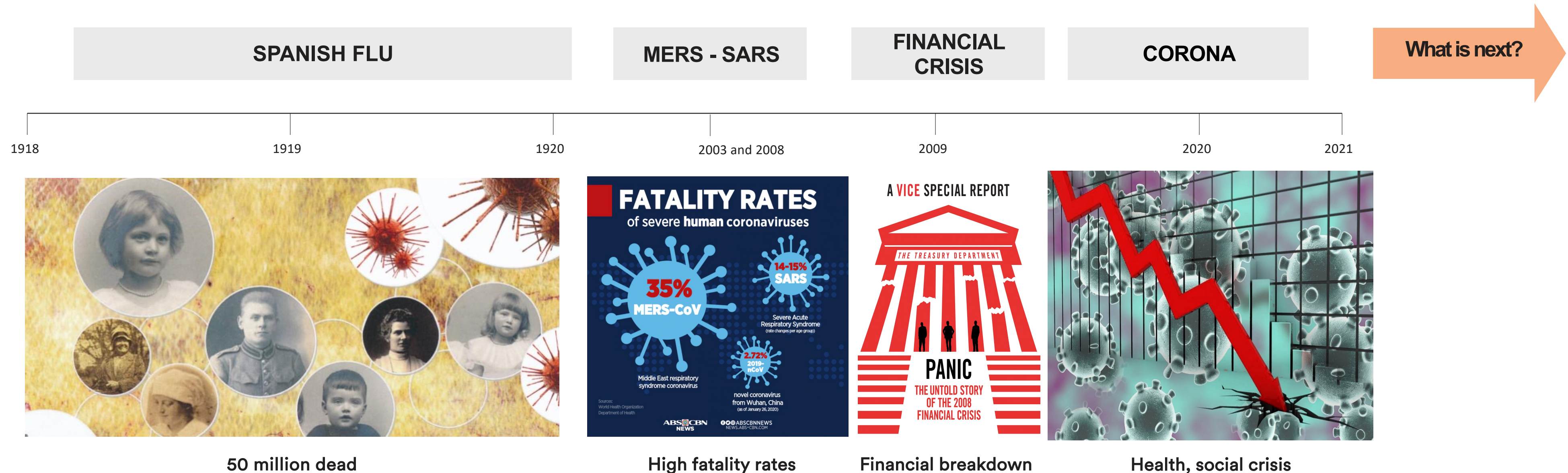
This is not an ADB material. The views expressed in this document are the views of the author/s and/or their organizations and do not necessarily reflect the views or policies of the Asian Development Bank, or its Board of Governors, or the governments they represent. ADB does not guarantee the accuracy and/or completeness of the material's contents, and accepts no responsibility for any direct or indirect consequence of their use or reliance, whether wholly or partially. Please feel free to contact the authors directly should you have queries.

**Henning
Larsen** —

RAMBOLL

Shocks and stresses - impacting urban living?

What have we learned? How have we responded?

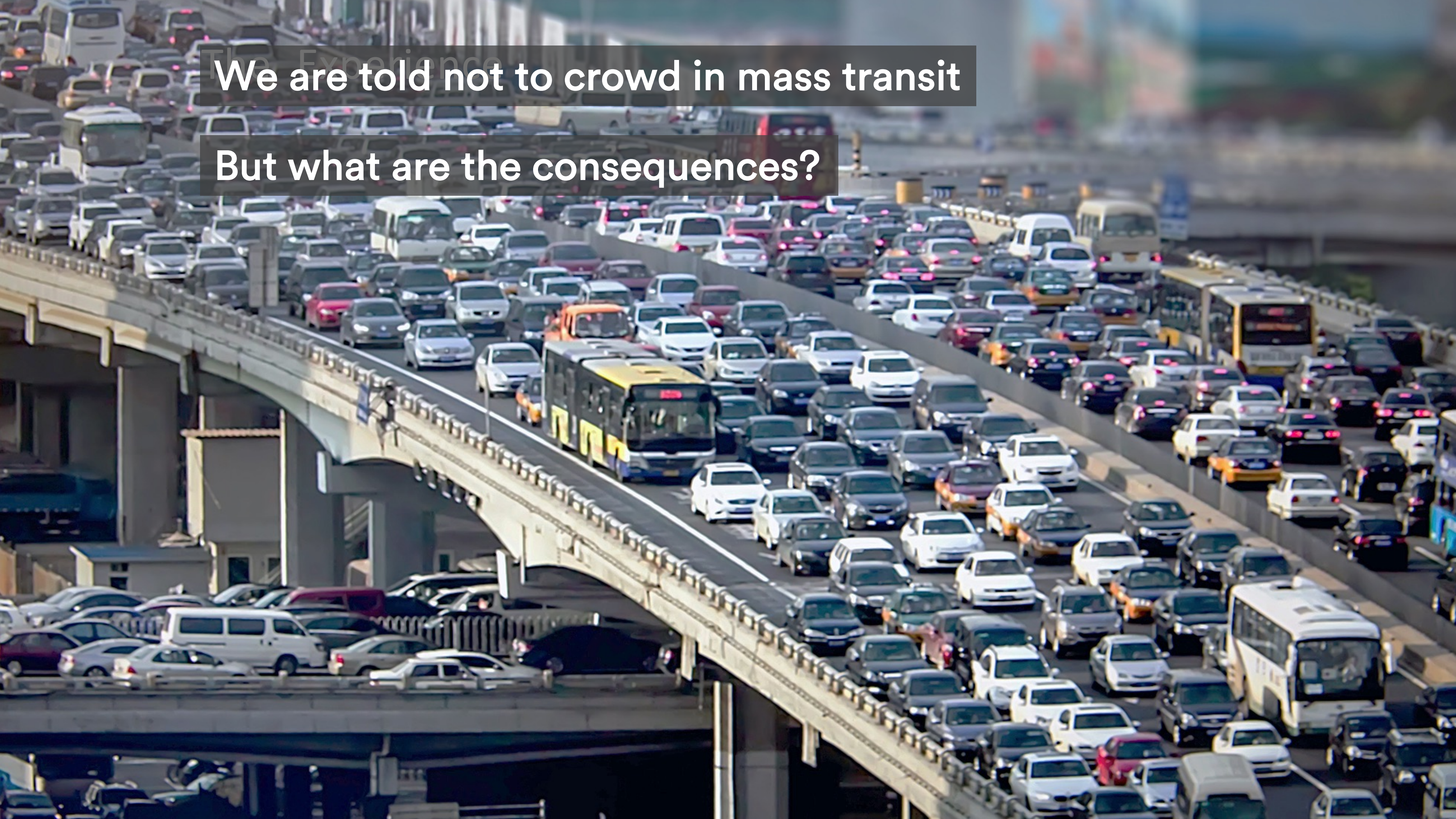


- We are extremely vulnerable and have no plan B
- We are leaning on compact living, mass transit, mega-cities, instant global accessibility - but the smallest of all germs put it all to stop.

The Experience

We are told not to crowd in mass transit

But what are the consequences?



We are told not to crowd in public realm

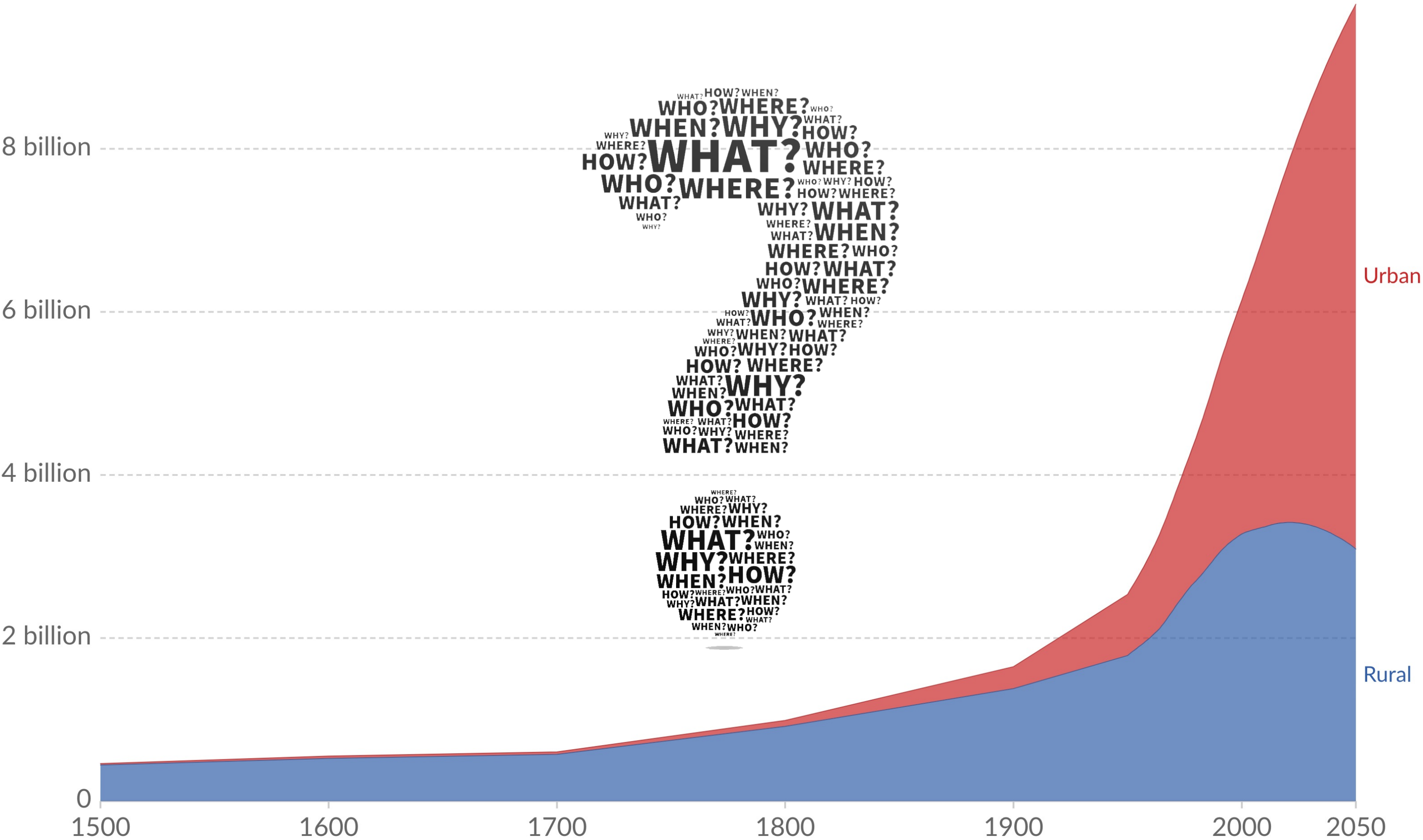


What will the new normal be?



Urban and rural population projected to 2050, World, 1500 to 2050

Total urban and rural population, given as estimates to 2016, and UN projections to 2050. Projections are based on the UN World Urbanization Prospects and its median fertility scenario.



Source: OWID based on UN World Urbanization Prospects 2018 and historical sources (see Sources)

Now is the time to rethink – now is time to create resilience

Best practice to next practice

- Best practice is retrospective and more of the same
- Cities last for the next 100s of years and must resist many shocks and stresses
- Best practices don't consider economic crisis, volcano outbreaks, health crisis, terror, climate changes, climate related refugees etc.
- Best practice is system centric
- Next practice must be human centric and resilient

Human centric solutions are:

- Sustainable and livable
- Smart
- Resilient
- Flexible
- Cultural
- And.....



We are at the brink of a fundamental transition

Leap frog communication shift

- 5G allowing real IoT
- Can leverage resilient and flexible living
- Autonomous healthy mobility



Climate change is driving changes

- New urban planning conditions
- Location and mitigation is key
- More mobility - less traffic



Economic transitions

- Shared economy
- Transport – from individual ownership to subscription of mobility services
- Remote working



Corona crisis showing profound vulnerability

- Transition in personal awareness
- Consequences of crowding
- Transition readiness

An aerial photograph of a modern city landscape featuring a mix of green spaces, roads, and buildings. A semi-transparent network of blue lines and dots is overlaid on the image, symbolizing digital connectivity. The text is centered over the image.

SMART TECHNOLOGIES ARE
ENABLERS OF RESILIENCE

*“A truly SMART society is
about people, future,
vision and planning”*

THANK YOU

SØREN HANSEN – SH@RAMBOLL.DK
HEAD OF URBANISM DEVELOPMENT

TEAM LEADER ,
ASEAN AUSTRALIA SMART CITIES TRUST FUND



**Henning
Larsen** —