

This is not an ADB material. The views expressed in this document are the views of the author/s and/or their organizations and do not necessarily reflect the views or policies of the Asian Development Bank, or its Board of Governors, or the governments they represent. ADB does not guarantee the accuracy and/or completeness of the material's contents, and accepts no responsibility for any direct or indirect consequence of their use or reliance, whether wholly or partially. Please feel free to contact the authors directly should you have queries.



## Early Warning Systems (EWS) and Infrastructures

### ADB Virtual Dialogues on Resilient Infrastructure



Regional Integrated Multi-Hazard Early Warning System for Africa and Asia (RIMES)

9 Dec 2020

[www.rimes.int](http://www.rimes.int)

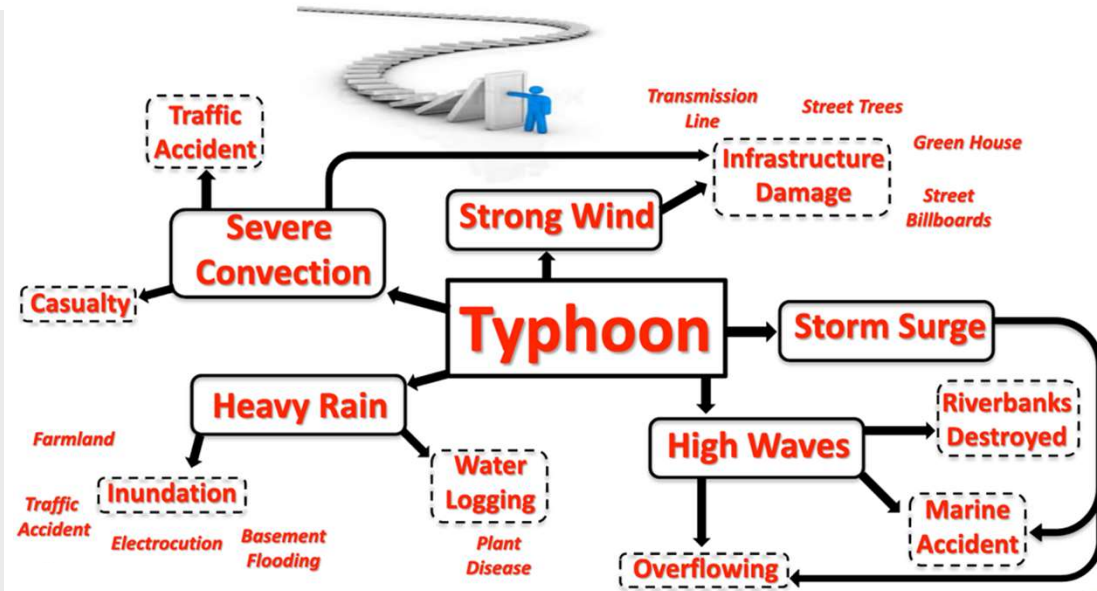
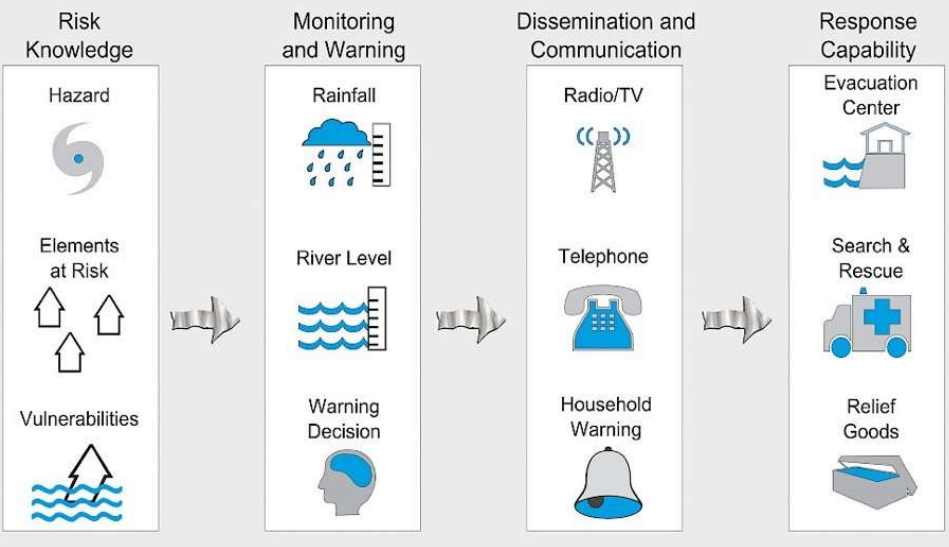
[carlyne@rimes.int](mailto:carlyne@rimes.int)

## Early Warning Systems and Infrastructures

Infrastructures (e.g., communication, transport, energy, water, etc) are critical to early warning and early action...

Likewise, EWS is critical to infrastructure planning, operation and maintenance...

Example: Flood

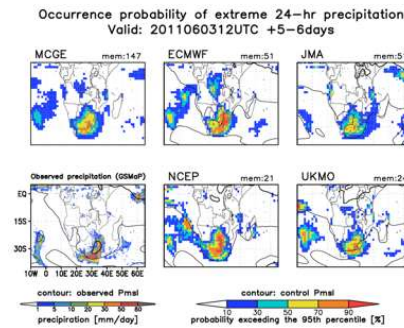




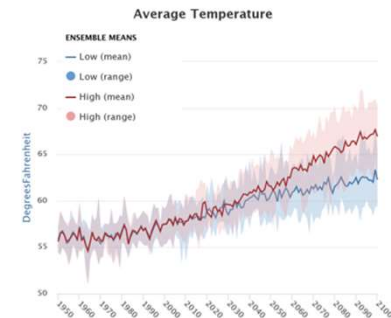
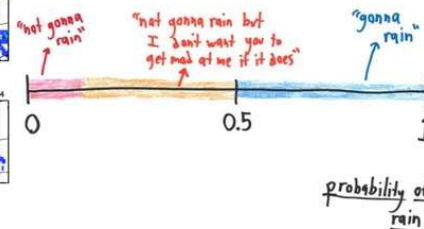
# Trends in Early Warning



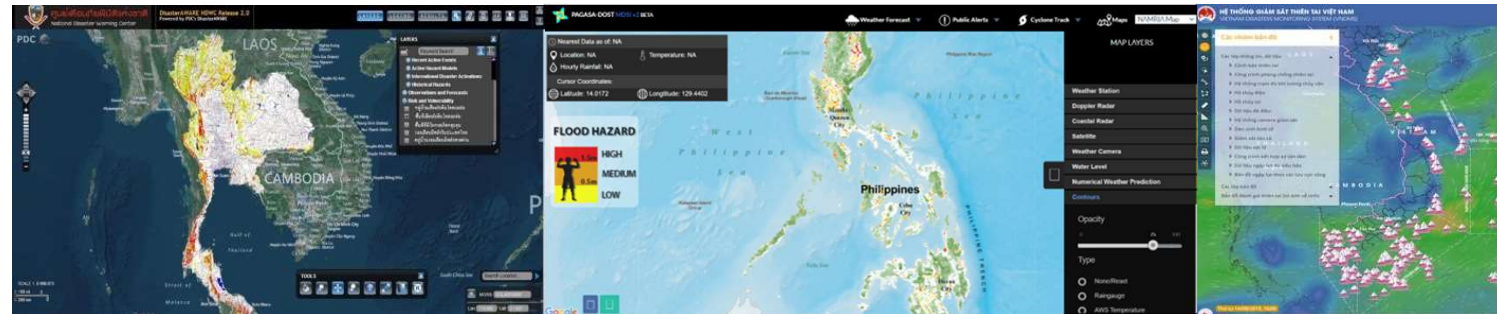
## HAZARD-BASED FORECASTING



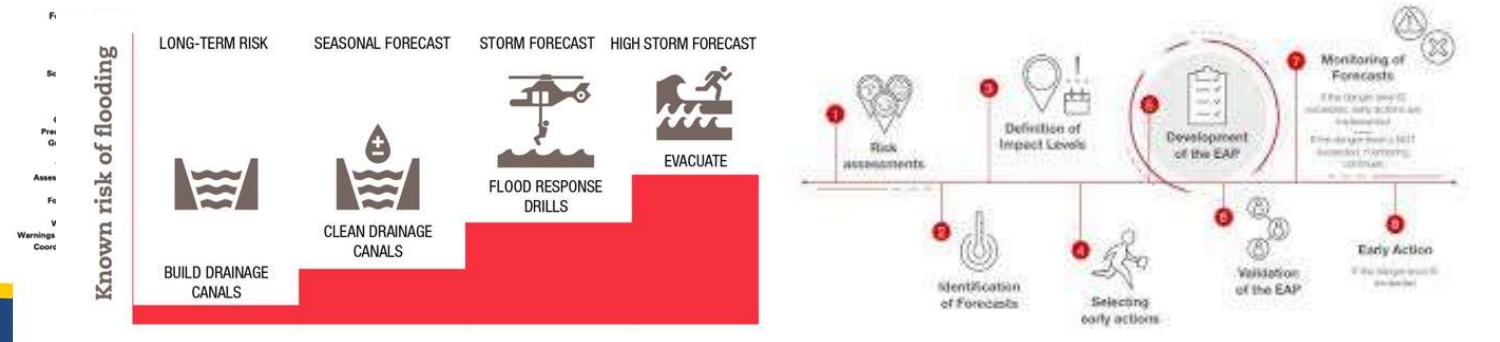
Weather Forecaster



## IMPACT-BASED FORECASTING



## IMPACT FORECASTING and RISK-BASED WARNING







## National Weather Service Data

NAM  
GFS model

## Road Weather Forecast System

Forecast Module A

Forecast  
Integrator



BEGIN YOUR TRIP HERE.

77° Mostly Sunny

[ABOUT](#) | [CONTACT](#) | [FAQ](#) | [FEEDBACK](#)

[Like](#) 2 [f](#) [t](#) [You Tube](#)

Hi, you're in Dallas. | [Sign In](#)

Select Your Region

Transit Trip Planner

My511

Traffic and Transit Conditions

Travel Links

**ALERTS:** There are no service alerts at this time.

Save Map | Display Map | Clear Map

Show on Map: Active

Set Map on Refresh Rate: 5 minutes

Go To: Select a Region



Traffic Incidents



Traffic Construction



Transit Incidents



Transit Construction



Special Events



Traffic Speeds



HOV Speeds



Weather Alerts



Weather Forecast



Light Rails



AVL



Message Signs



Traffic Cameras



Weather Overlay



**Weather Alert**

- Wet
- Snow
- Mixed Precip
- Severe Weather
- High Winds
- Severe Weather Possible
- Low Visibility

Last Update: 11/17/2012 12:02PM  
Severe Weather Alert: Tornado Warning

Alternate Treatment

Selected View and Rotation

☐ Standard View  
☐ Rotated View  
☐ Orientation and Rotation

Scale

1:100,000

