

August 2020

CENTER FOR VACCINE INNOVATION & ACCESS (CVIA)

# 10th Policy Actions for COVID-19 Economic Recovery (PACER) Dialogues

## Enhancing Readiness for Large-Scale Vaccine Distribution Amid COVID-19

This is not an ADB material. The views expressed in this document are the views of the author/s and/or their organizations and do not necessarily reflect the views or policies of Asian Development Bank, or its Board of Governors, or the governments they represent. ADB does not guarantee the accuracy and/or completeness of the material's contents, and accepts no responsibility for any direct or indirect consequence of their use or reliance, whether wholly or partially. Please feel free to contact the authors should you have queries.

# Introduction and framework for COVID-19 vaccine preparedness

- Farzana Muhib



# Agenda

- Introduction [F. Muhib]
- COVID-19 epidemiology, vaccine and prioritization efforts [F. Muhib]
- Global supply strategy and financing [H. Kettler]
- Vaccine delivery [H. Vu]

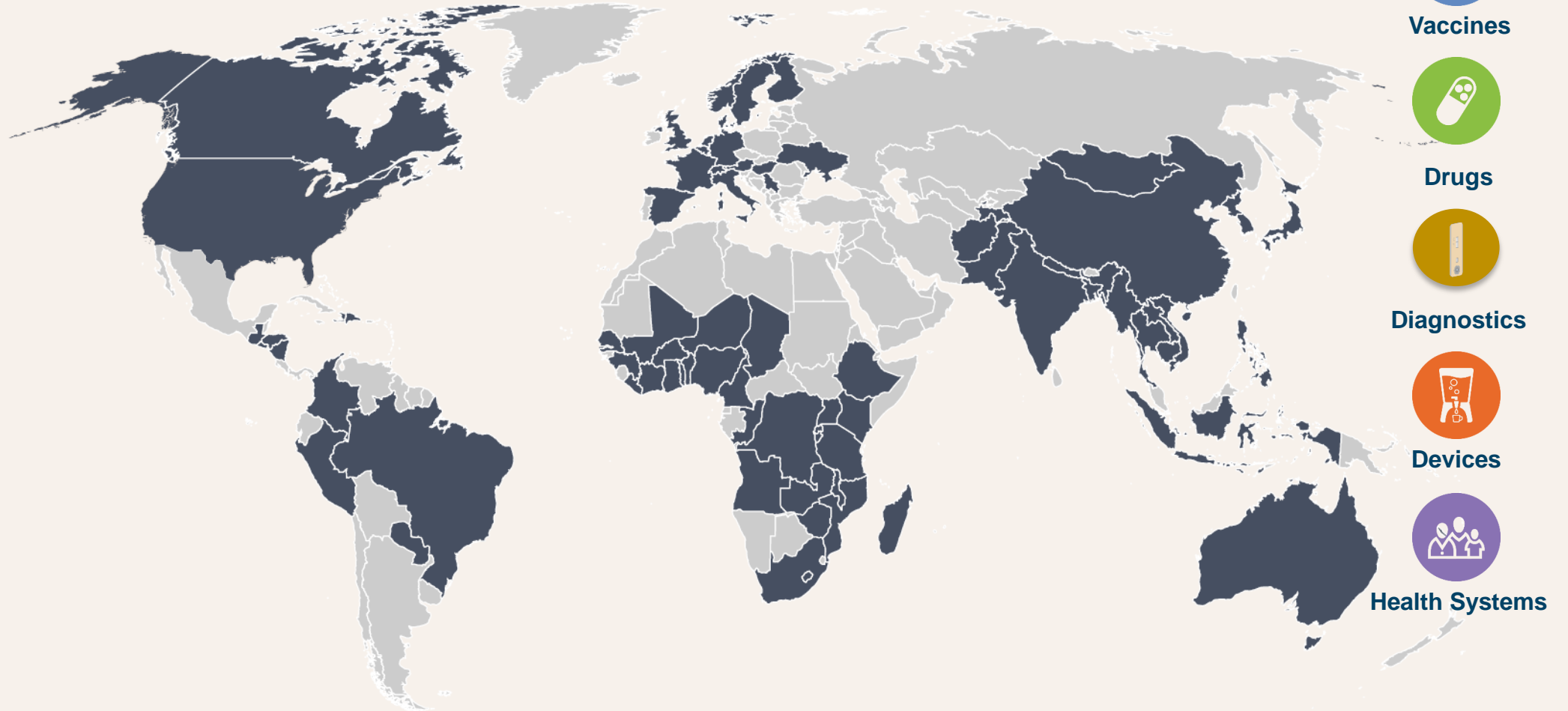
# Introducing the PATH Team

- Farzana Muhib, MPH, MALD, Asia Lead, Vaccine Implementation
- Hannah Kettler, PhD, Director, Vaccine Financing and Partnerships
- Huong Vu, MD, Regional Technical Advisor (Mekong region)



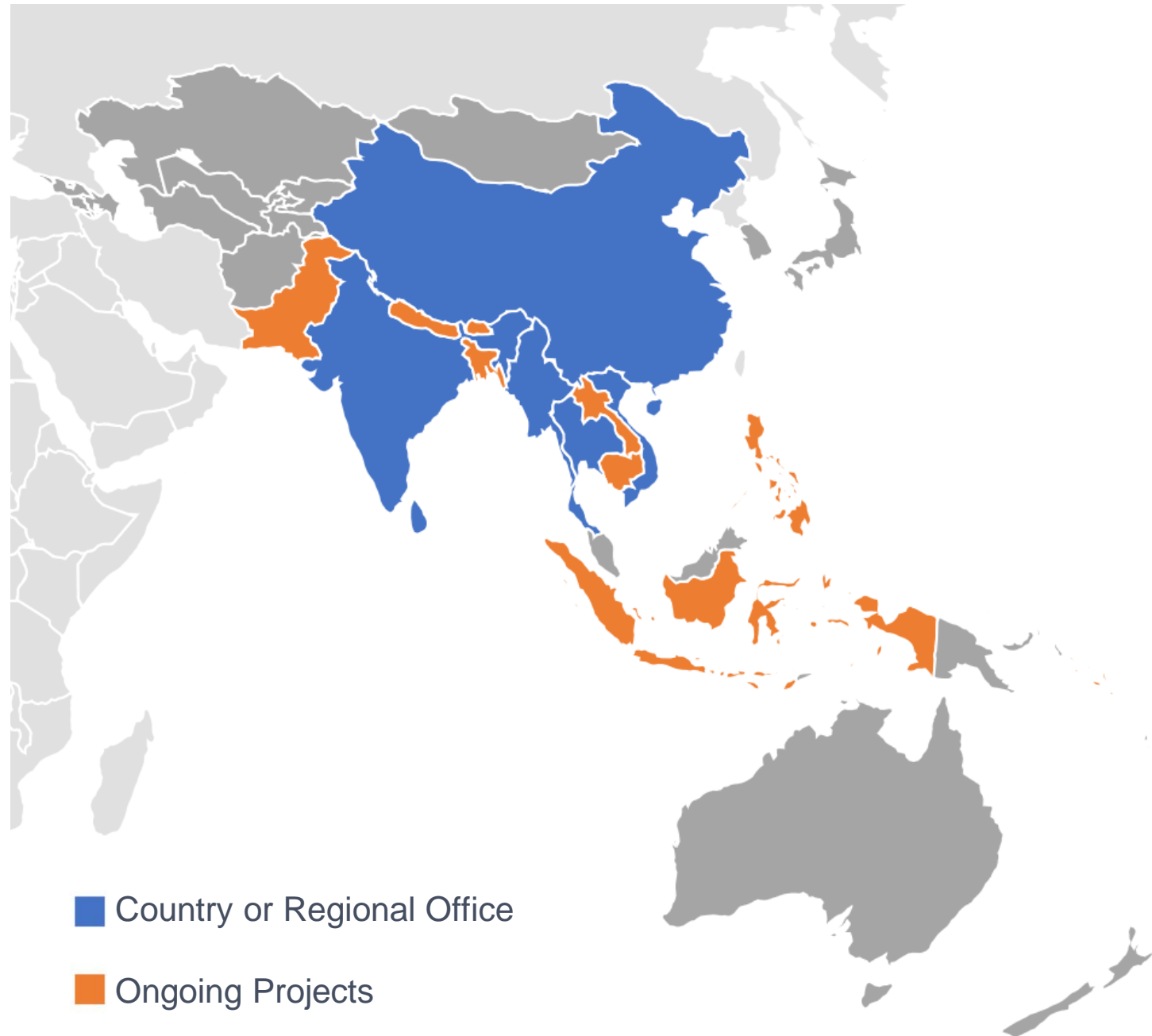
PATH is a global team of innovators working to eliminate health inequities so people, communities, and economies can thrive.

Today, we are a global team of 1,500+, working in 70+ countries.



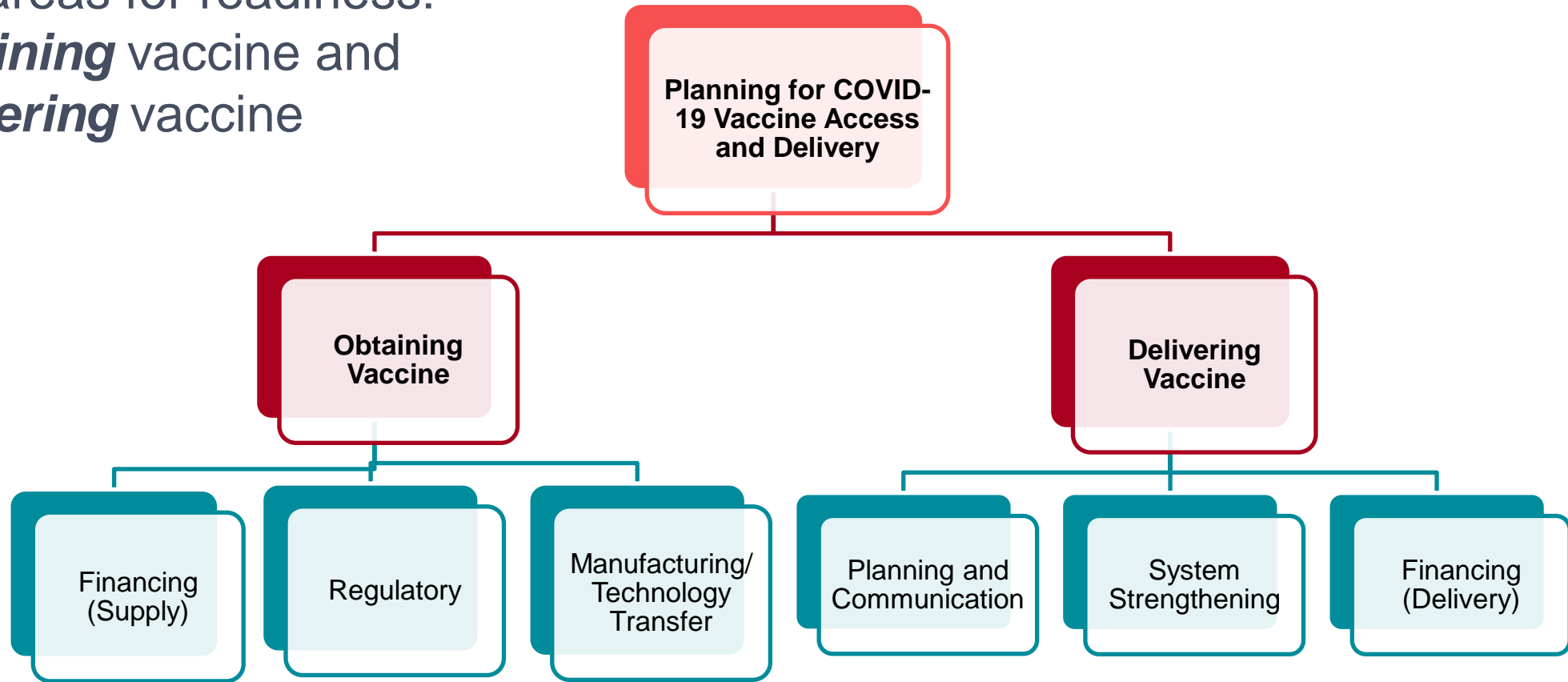
# PATH's Asia Presence

- PATH offices exist in China, India, Myanmar, Sri Lanka, and Vietnam.
- The Vietnam office serves the Mekong Region, including Vietnam, Laos, Cambodia, and Thailand.
- PATH is also engaged in projects in Bhutan, Pakistan, Bangladesh, Nepal, Indonesia, Philippines, and the Solomon Islands.



# Framework for COVID-19 Vaccine Preparedness

Two areas for readiness:  
***Obtaining*** vaccine and  
***delivering*** vaccine





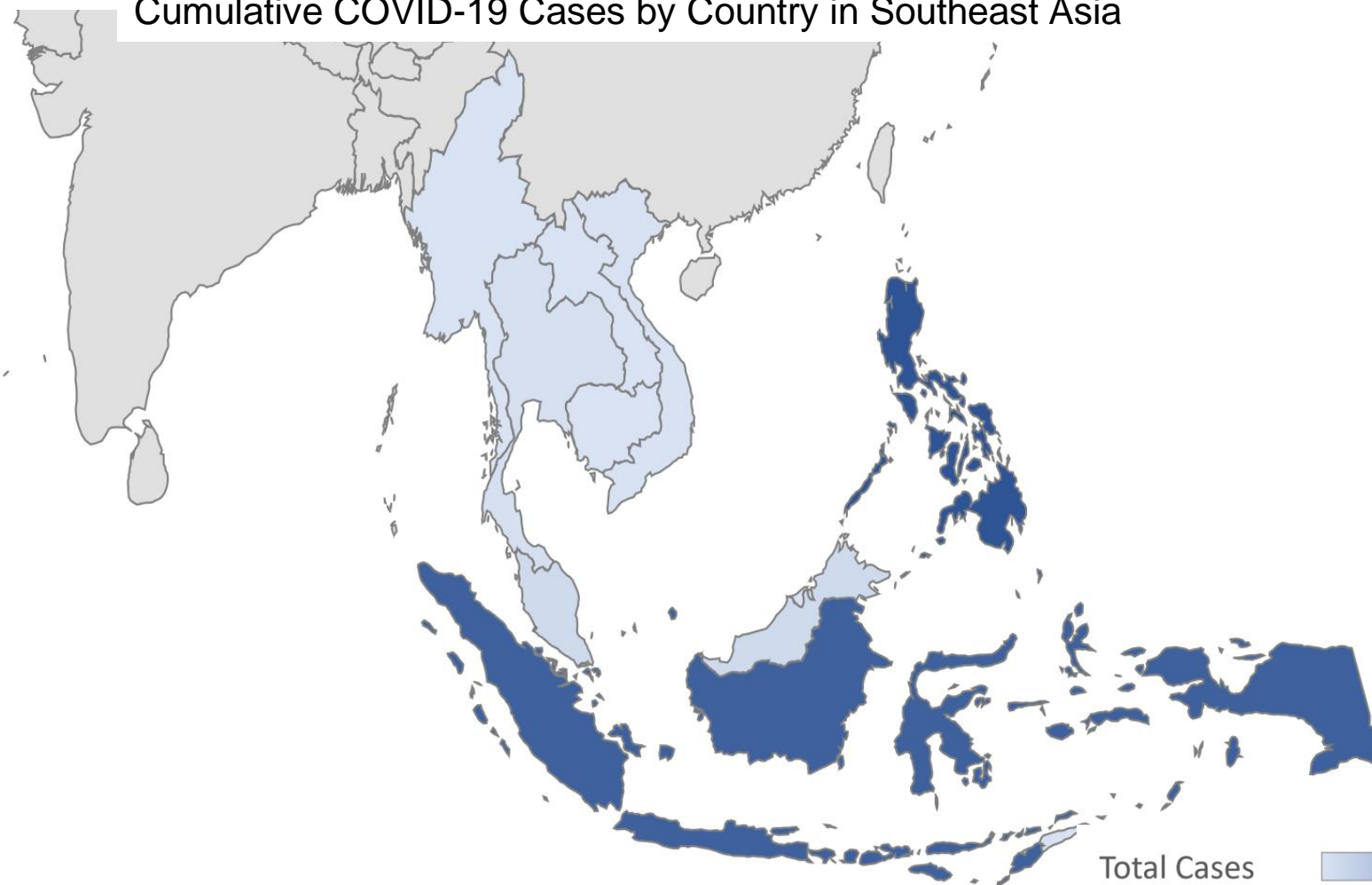
# Overview of COVID-19 epidemiology and prioritization efforts

- Farzana Muhib



# Southeast Asia COVID-19 Total Cases

Cumulative COVID-19 Cases by Country in Southeast Asia

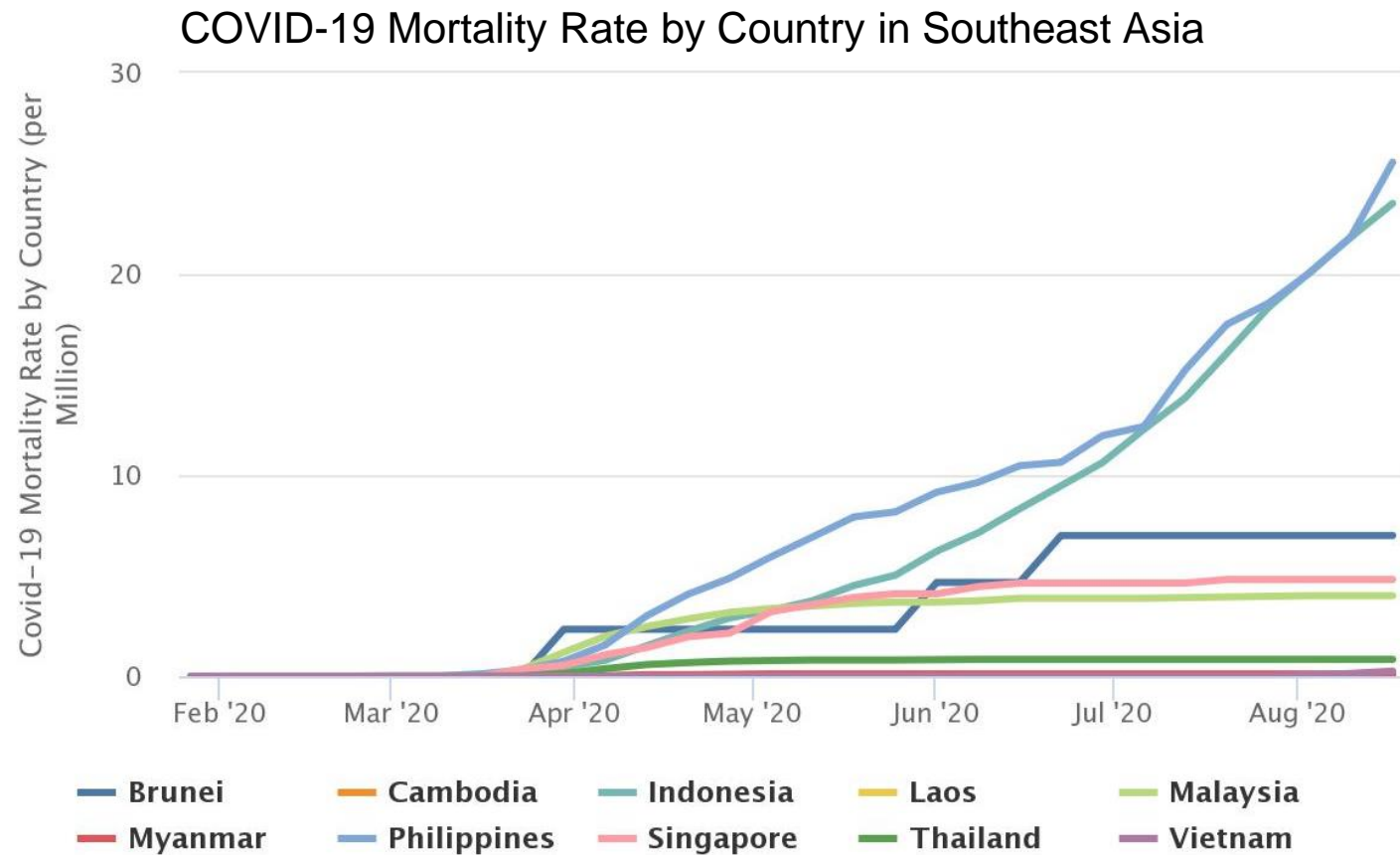


Regional Member	Total Cases	Cases per 1M population
Singapore	55838	9535
Philippines	164474	1498
Indonesia	141370	516
Brunei	142	324
Malaysia	9212	284
Thailand	3378	48
Timor-Leste	25	19
Cambodia	273	16
VietNam	983	10
Myanmar	376	7
Laos	22	3

Total Cases



# Southeast Asia COVID-19 Mortality



CSIS Southeast Asia Program | Source: Johns Hopkins University

Regional Member	Total Deaths	Deaths per 1M population
Philippines	2681	24
Indonesia	6207	23
Brunei	3	7
Singapore	27	5
Malaysia	125	4
Thailand	58	0.8
VietNam	24	0.2
Myanmar	6	0.1
Timor-Leste	0	0
Cambodia	0	0
Laos	0	0

# WHO Vaccine Prioritization Process

**Rationale:** While production capacity is scaling, vaccine supply will need to be prioritized.

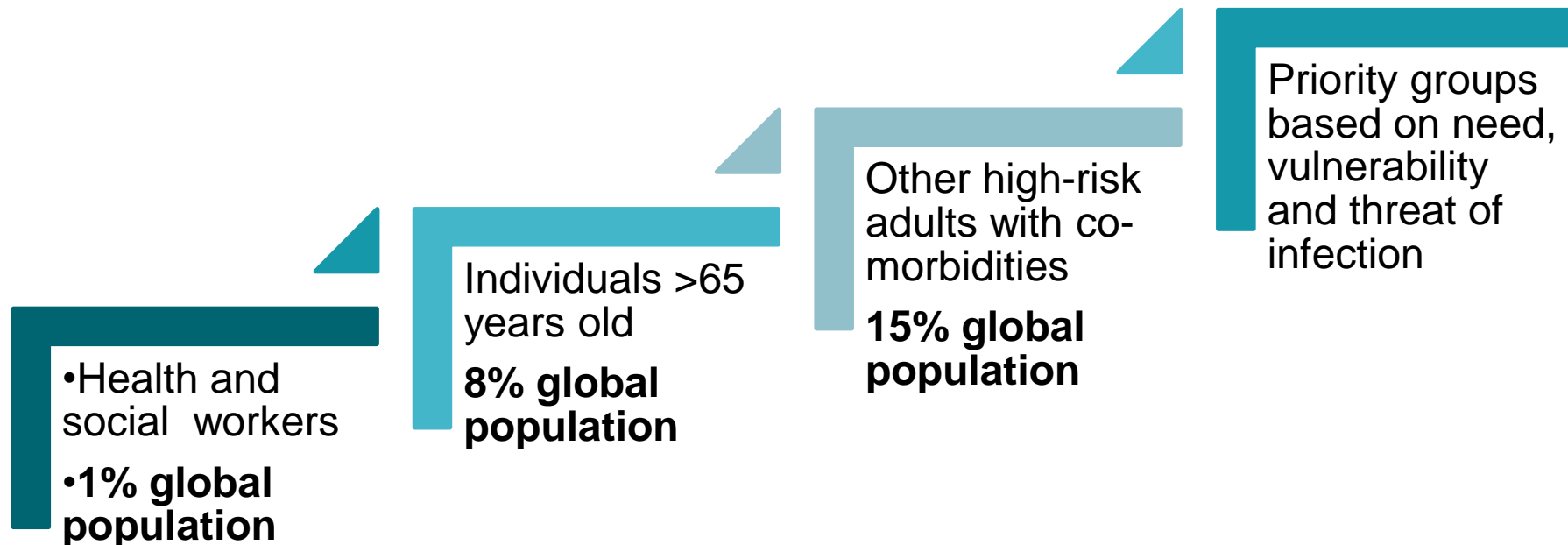
## **Three components:**

- Allocation of licensed vaccines based on public health priorities (vaccine candidate independent) - WHO
- Policy recommendations of specific vaccines based on safety and efficacy profiles - Strategic Advisory Group of Experts (SAGE)
- Guidance on specific vaccine candidates and delivery approaches – WHO and NRA Regulatory, Safety, & Monitoring

# WHO Draft Allocation Framework

Goal: “To protect public health and minimize societal and economic impact by reducing COVID-19 mortality.”

To achieve this goal, supply allocation to participating countries is currently prioritizing the following target cohorts:



# Vaccination Objectives

## Objectives

## Considerations

**Interrupt transmission**

Likely requires a larger number of doses than may be available.

**Avert deaths and severe disease**

Requires vaccinating those at highest risk; however, all approved vaccines may not have demonstrated efficacy in high risk groups.

**Restart the economy**

Need to assess the segments of the economy that drive GDP, then analyze the impact vaccination of individuals in these segments will have on public health and the economy.

# Vaccination Allocation Considerations for Asian countries

## Considerations

### **Demographic distribution**

Demographic distribution in Asia is highly variable (low to high number of >65-year old adults).  
Intergenerational households are common.

### **Prevalence of co-morbidities**

Co-morbidities are increasing in Asian countries and place people at higher risk for severe disease.

### **Access to health care**

Low to high health system capacity to treat future COVID-19 patients and ongoing health needs.