



Labour Migration : Trends and Policies in Indonesia

INDONESIA



**GDP
(constant)**
\$1.147 trillion



Remittance
\$10,974 million
(1,076% to GDP)



Labor force
133.950.010



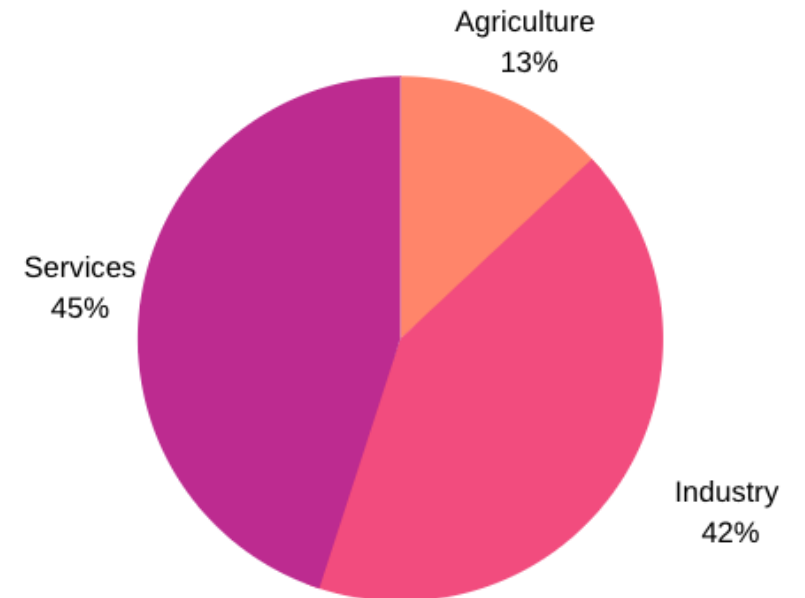
Population
267.663.435

2

%

**Labor force
participation rate**
69.23%

GDP By Sector (%)



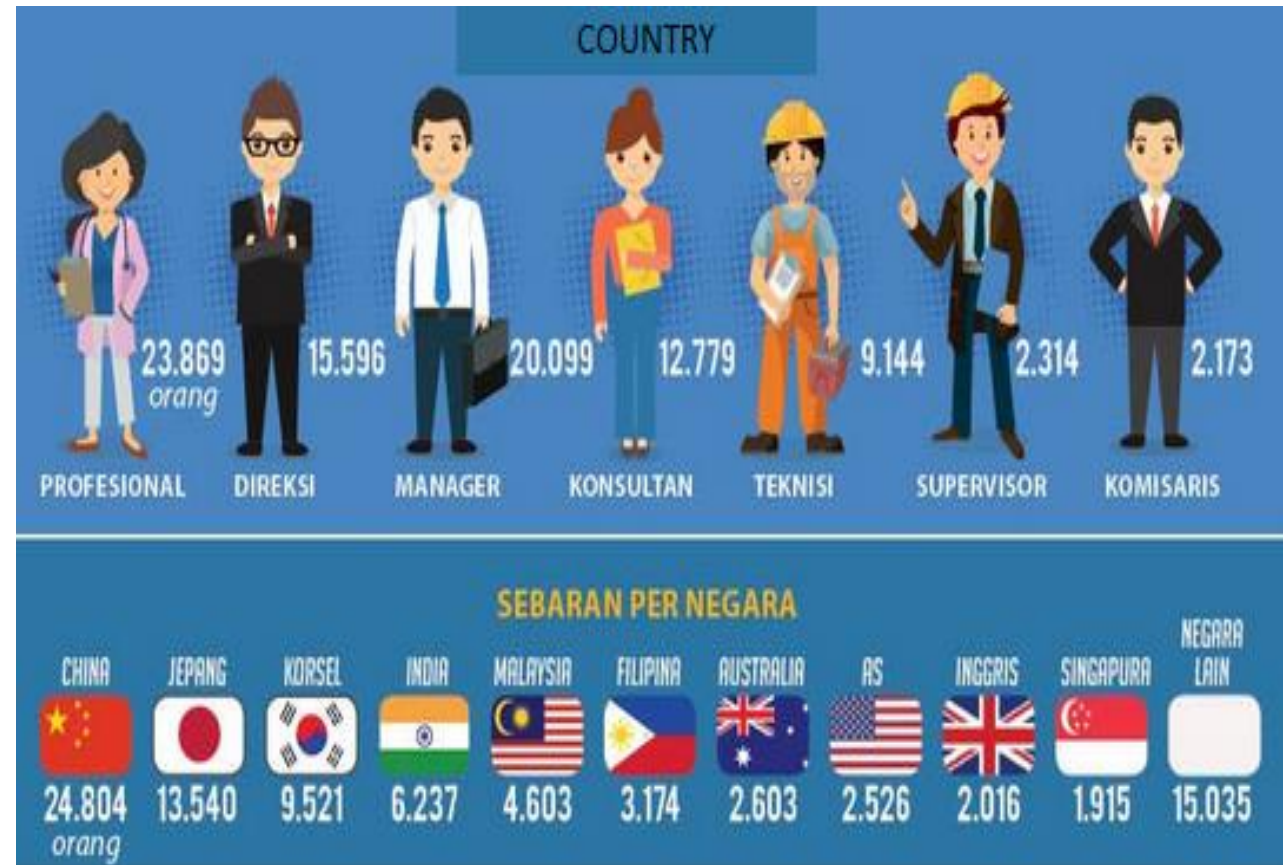
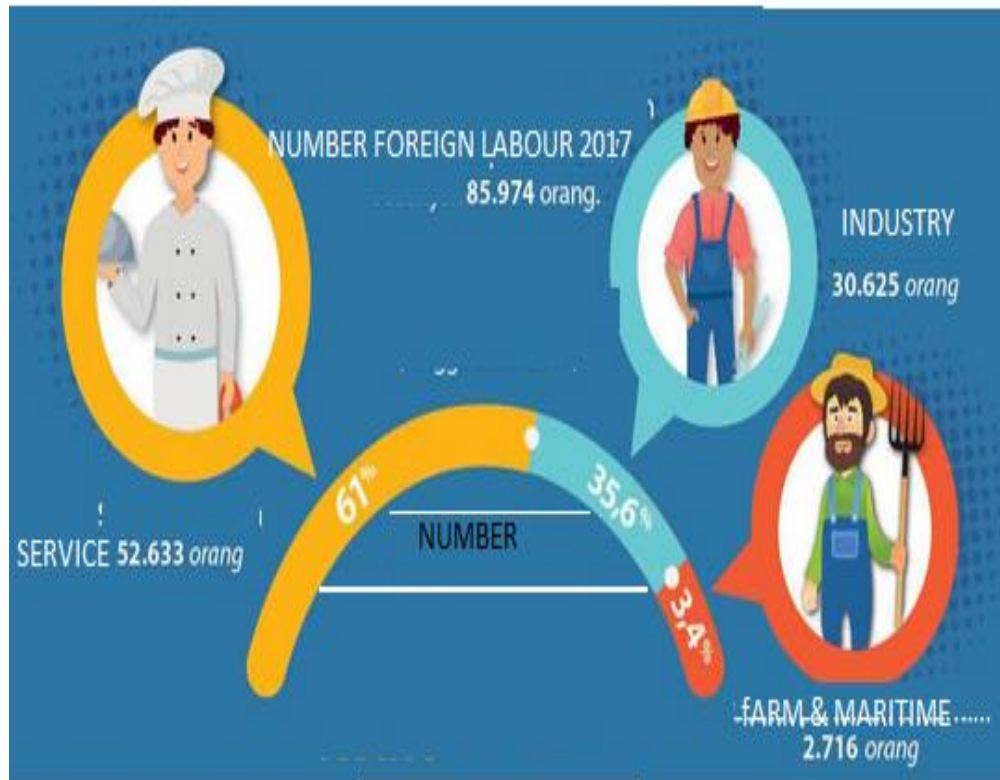
Source: WB (2019),
Statista (2019) & Bank
Indonesia (2019)

INDONESIA AS A DESTINATION COUNTRY



FOREIGN LABOUR MIGRANT IN INDONESIA

4



INDONESIA AS THE ORIGIN COUNTRY



INDONESIAN MIGRANT CHARACTERISTIC

6



72%

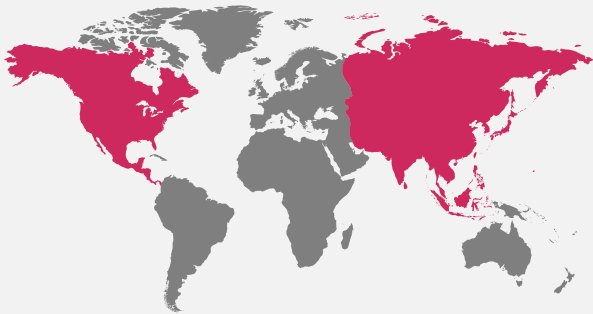
Came from rural areas



78%

> Low skilled who never reached high school

Destination



Indonesian Migrant
Favorite Destination

Malaysia 55%
Saudi 13 %
Taiwan 10%
Hongkong 6%
Singapore 5%



Maid / Baby Sitter

32%



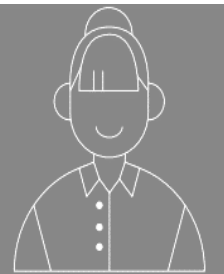
Farm Worker

19%



Construction Worker

18%



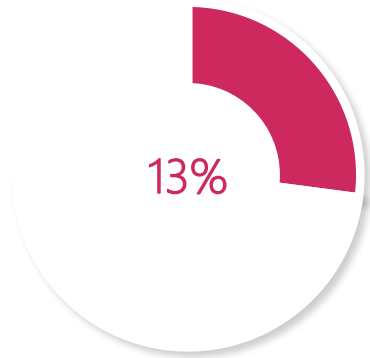
Factory Worker

8%



INDONESIAN MIGRANT PROFILE

7



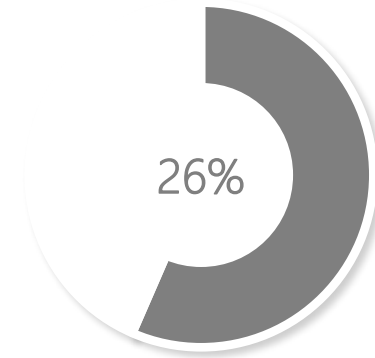
Female domestic Workers in Middle East

Who are most likely to be mistreated.
Indonesian Government has put moratorium for sending the workers



Migrant Workers in Developed Countries

More educated than previous category , largely consist of female workers, working in more developed countries .



Undocumented male worker

Constitute about 80% work in agriculture and construction
Largest group of undocumented male workers



CHALLENGES FOR LABOR MIGRATION

- Lack of migrant's protection regulation and agreement
- Migrant workforces are mostly dominated by uneducated and unskilled labor
- Undocumented or illegal labor migration
- Migrant labors are prone to abuse and exploitation

POLICIES

9

TASK FORCE FOR PREVENTION OF NON PROCEDURAL MIGRANT WORKERS IN INDONESIA

- Vocational training for 20,000 laid-off workers funded by BPJS Employment
- Pre-Work Card (starting in 2020 for 2 million people)

DECREE OF THE MINISTER OF MANPOWER
NUMBER 260 of 2015

Termination and prohibition of
Indonesian Labor placement on
individual users in Middle
Eastern countries

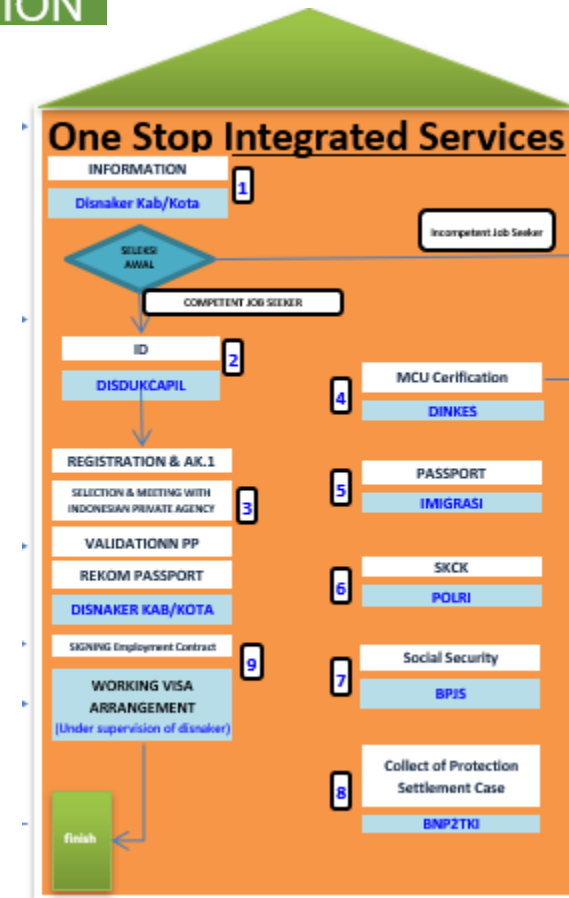


THE LIST OF MIDDLE EAST COUNTRIES:

- | | | |
|-----------------|-------------------------|--------------|
| 1. Saudi Arabia | 8. United Arab Emirates | 15. Sudan |
| 2. Lebanon | 9. Bahrain | 16. Yordania |
| 3. Oman | 10. Maroko | 17. Kuwait |
| 4. Tunisia | 11. Qatar | 18. Mesir |
| 5. Algeria | 12. Yaman | 19. Syria |
| 6. Libya | 13. Irak | |
| 7. Palestine | 14. Mauritania | |



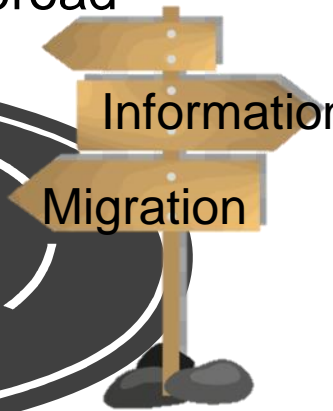
DIGITALISATION OF LABOR MIGRATION





Job Vacancies

Job vacancy information at home and abroad



Informasi migrasi ke luar negeri

- Information on procedures for working abroad:
- Requirements to become migrant workers, etc



Legal Documents

Information about obtaining documents for working



Training and Competency Test

Information on training and certification for Indonesian Migrant Workers (PMI)



PMI Household Data Collection



Indonesian Mission

Information about the parties that can be contacted when migrant workers face problems abroad

◆ ■ ◆ - PMI database and his family in the village

BILATERAL COOPERATION

2 Agreement
12 MoU
1 Memorandum of
Cooperation
1 Technical
Arrangement

Renewal Process : (Korea, Malaysia,
UAE, Qatar, Kuwait, Jordan, Turki,
Australia)



Discussion Process: 1 MoU (Brunei
Darussalam)



Invitation : Netherland , Rumania



REGIONAL COOPERATION



- ❖ Participated on the ASEAN Committee on the Implementation of the ASEAN Declaration on the Protection and Promotion of the Rights of Migrant Workers (ACMW);
- ❖ Active in the implementation of the ASEAN Consensus on Protection and Promotion of the Rights of Migrant Workers (ASEAN Consensus) as a commitment of the Government of Indonesia, through the implementation of 7 ACMW Action Plan 2018-2025 programs;

MULTILATERAL COOPERATION

13



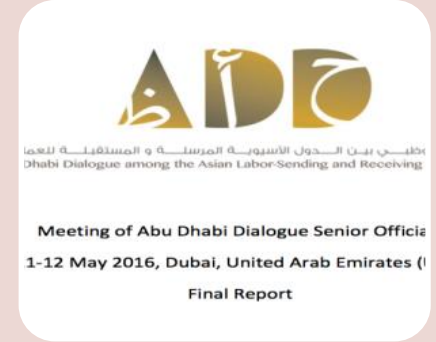
ILO



OIC



COLOMBO
PROCESS

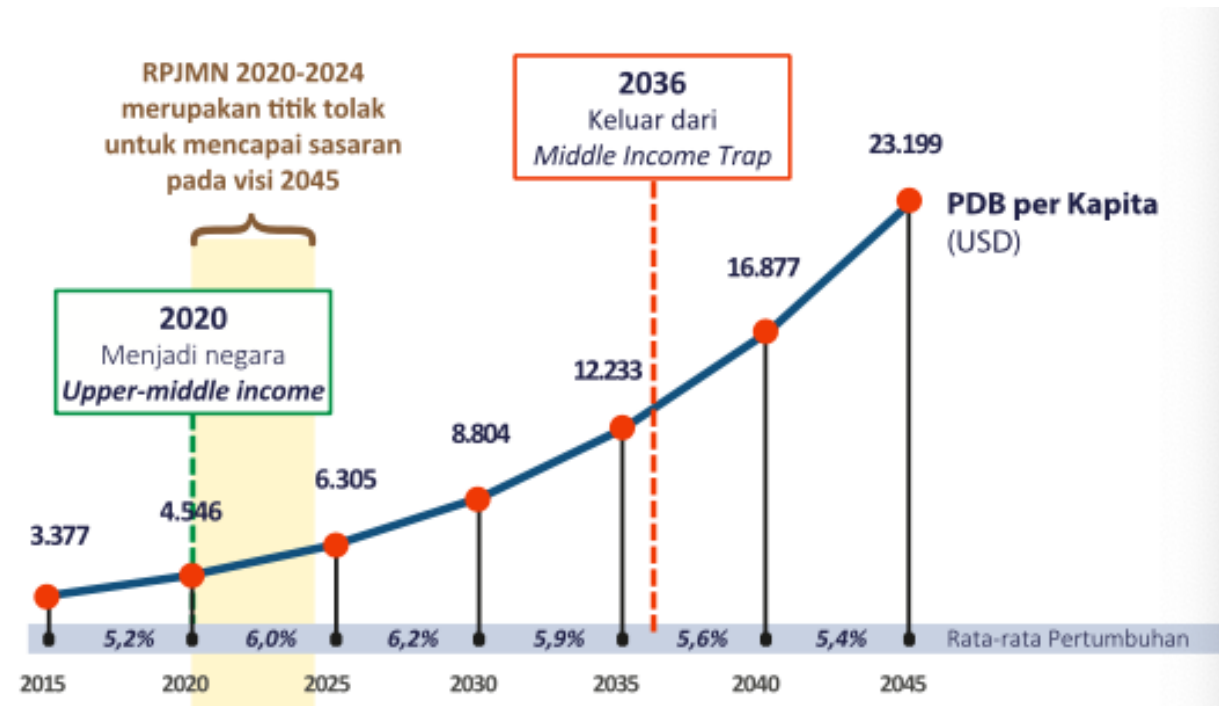


ABU
DHABI
DIALOGUE

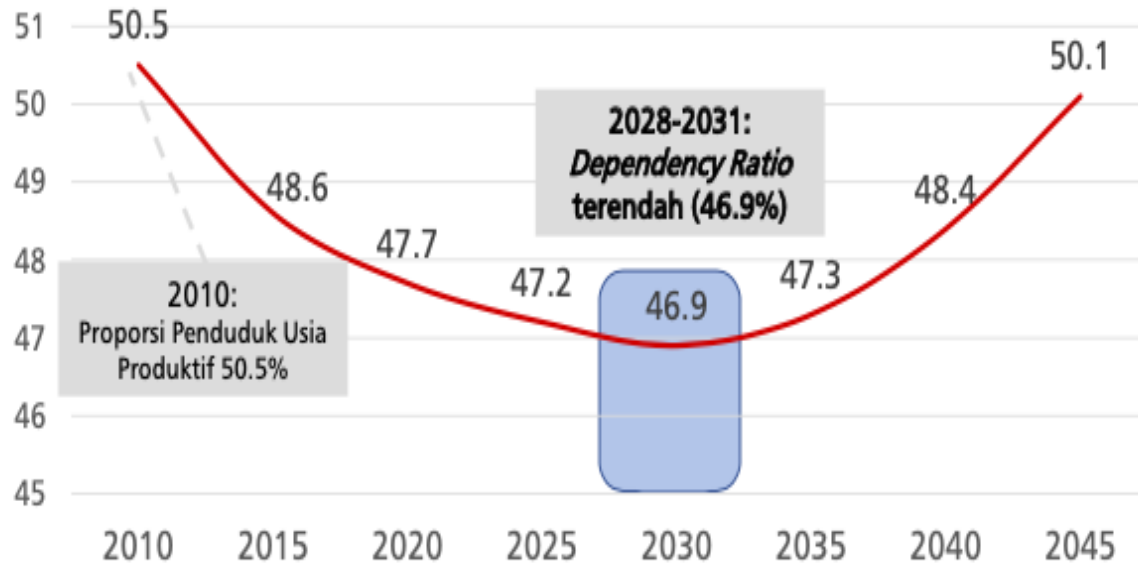
FUTURE TRENDS



ECONOMIC GROWTH TOWARD 2045



DEMOGRAPHIC BONUS



Population growth is projected to reach its peak at 2030 where the growth rate of productive-aged population is above non productive-aged population (Bappenas, 2017).

Indonesia is lacking of profesional engineer where from 750 thousands of engineer, only 9 thousands are a professional engineer and surely Indonesia is left behind from other peer countries in terms of engineer amount (Bappenas, 2017)

By focusing in the improvement of human capital's capacity, BAPPENAS targets to increase Human Development Index (HDI) to 75,54 by 2024 as one of Macro Development Goals (2020-2024) (Bappenas, 2020).



THANK YOU

24Slides