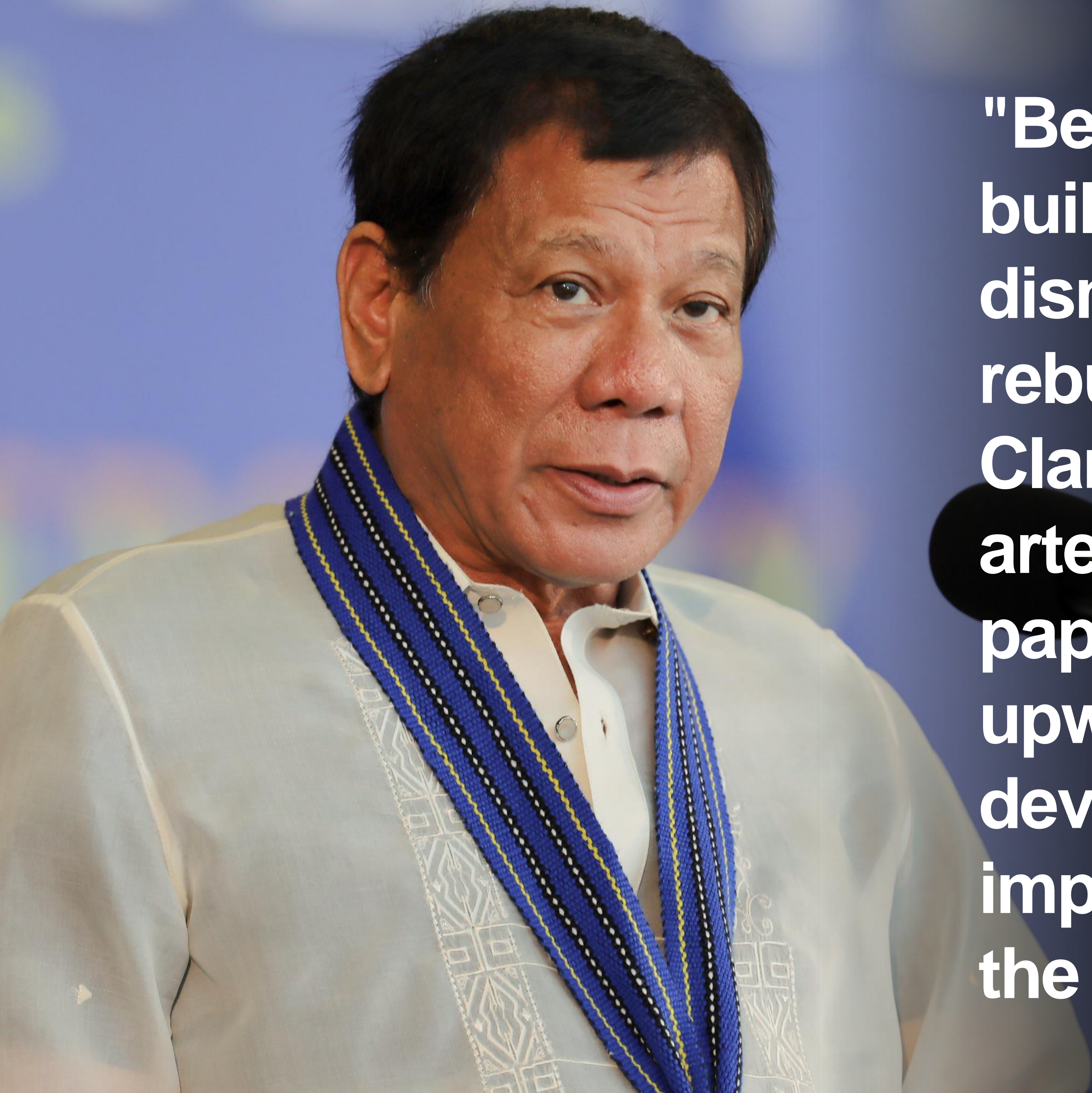


This is not an ADB material. The views expressed in this document are the views of the author/s and/or their organizations and do not necessarily reflect the views or policies of the Asian Development Bank, or its Board of Governors, or the governments they represent. ADB does not guarantee the accuracy and/or completeness of the material's contents, and accepts no responsibility for any direct or indirect consequence of their use or reliance, whether wholly or partially. Please feel free to contact the authors directly should you have queries.

clark
It works. Like a dream.





"Believe me, it is easier to build from scratch than to dismantle the rotten and rebuild upon its rubbles. Clark is a very important arterial place kasi ito yung papalabas talaga ng Luzon upwards, and the development is very important that we disperse the industries."

Everyone wants to move to the big city.

Good money, good jobs,
a place to be productive.

But the paradox is that cities
don't work for people,
even though they're full of them.



It's a pressure cooker of congestion,
pollution and rent you can't afford.



First life, then spaces, then buildings –
the other way around never works.

JAN GEHL





Cities must be built for people.

TOKYO, JAPAN



Cityclock

SINGAPORE



Richie Chan/Shutterstock

SEOUL, KOREA



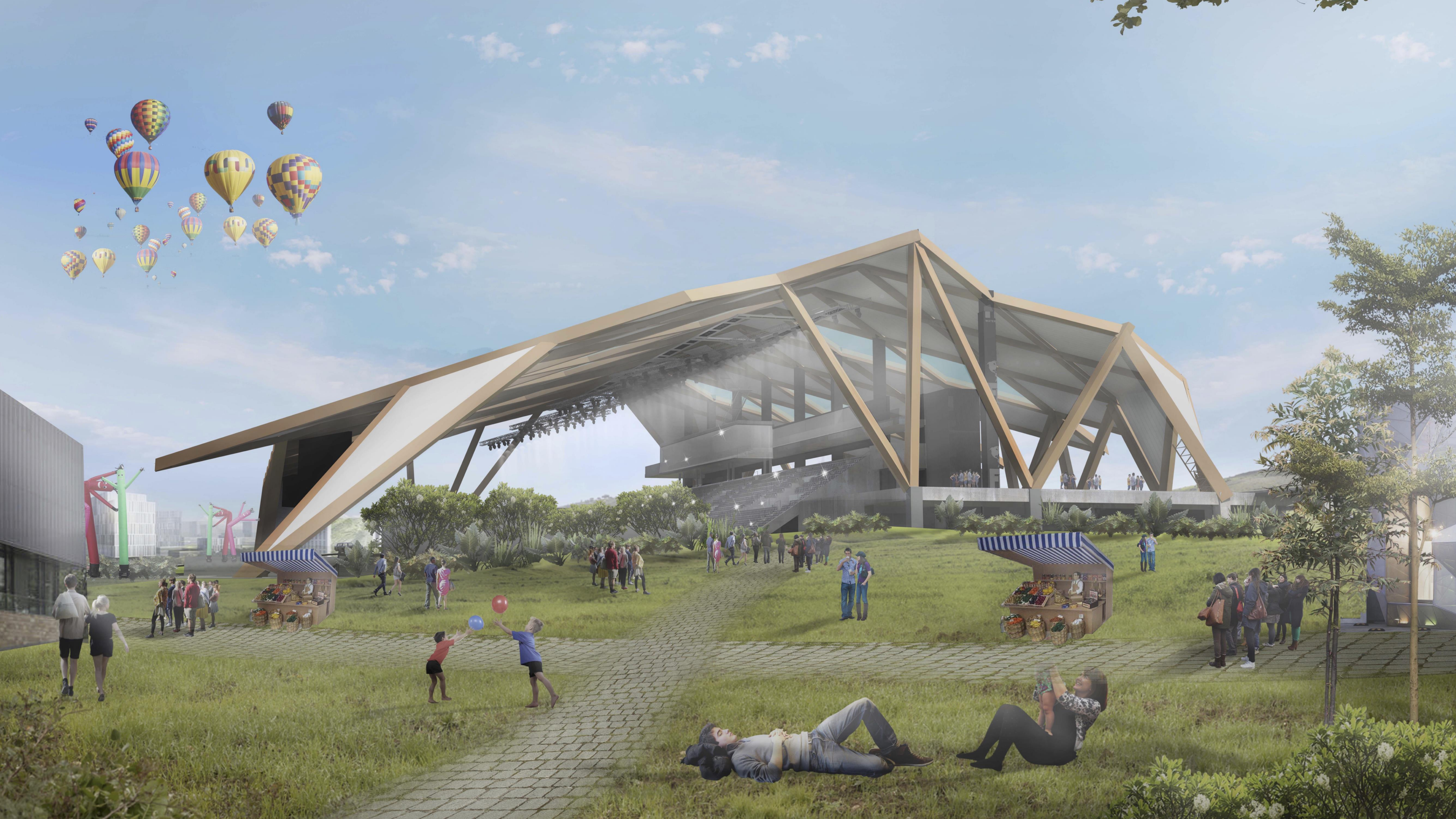
Cityclock

LA RAMBLA, BARCELONA



An aerial night-time rendering of a modern sports and entertainment complex. The central focus is a large, illuminated stadium with a curved roof and a brightly lit field. To its left is a soccer field with a running track. In the foreground, there's a large, modern building with a distinctive, angular, white and blue facade. To the right, there are several multi-story residential or commercial buildings. The entire complex is surrounded by lush greenery, trees, and landscaped walkways. The scene is lit with a mix of warm and cool colors, creating a vibrant and futuristic atmosphere.

Clark is being built for people.






An architectural rendering of a modern urban development at dusk. The scene features several multi-story buildings with illuminated windows and balconies. In the foreground, there is a large, open public space with a grid of walkways, green lawns, and a prominent red sculpture. People are depicted walking and sitting in the space, suggesting a vibrant community. The background shows a city skyline under a twilight sky.

Clark is envisioned to have the vibrancy of a city without the pressures of city life.



An aerial architectural rendering of a modern campus. The scene is dominated by lush green lawns and numerous trees of various species. A winding river flows through the center-right of the image. On the left, there are several large, modern buildings with distinctive architectural features, including a prominent structure with a large, angled, metallic-looking roof. In the background, a dense urban skyline is visible under a hazy sky. The overall atmosphere is bright and airy, suggesting a well-planned, green urban environment.

And the energy of a culture
that is happy and inclusive.



CATALYST FOR NATIONAL GROWTH



NEW CLARK CITY

PORO POINT
LA UNION

JOHN HAY
BAGUIO CITY

TPLEX

CLEX

BALER



CLARK INTERNATIONAL AIRPORT

CLARK



MANILA-CLARK HIGH SPEED RAIL

SUBIC SEAPORT

NLEX

MANILA

SCTEX

MANILA BAY



SUBIC-CLARK CARGO RAILWAY

SLEX

BATANGAS CITY FREEPORT



NEW CLARK CITY



NEW CLARK CITY

National Government Administrative Center



PHASE 1: 2018 – 2022

60 hectares

- Aquatic Center
- Athletic Stadium
- Government Buildings
- Government Residences
- Athletes' Village
- River Park Corridor
- Support facilities: (retail, commercial, education, health)



PHOTO BY: TRISTAN TAMAYO



PHOTO BY: TRISTAN TAMAYO



PHILIPPINE SWIMMING
**1st Philippine National Open
Swimming Championships 2019**
New Clark City Aquatic Center
August 31 - September 3, 2019

Photo: Inquirer/Tristan Tamayo



PHOTO BY TRISTAN JAMAYO







PHOTO BY: TRISTAN TAMAYO





BCDA
Bases Conversion and
Development Authority



CLARK INTERNATIONAL AIRPORT



MGCJV
MEGAWIDE GMR CONSTRUCTION J.V. INC.

FILINVEST


JG SUMMIT
HOLDINGS, INC.

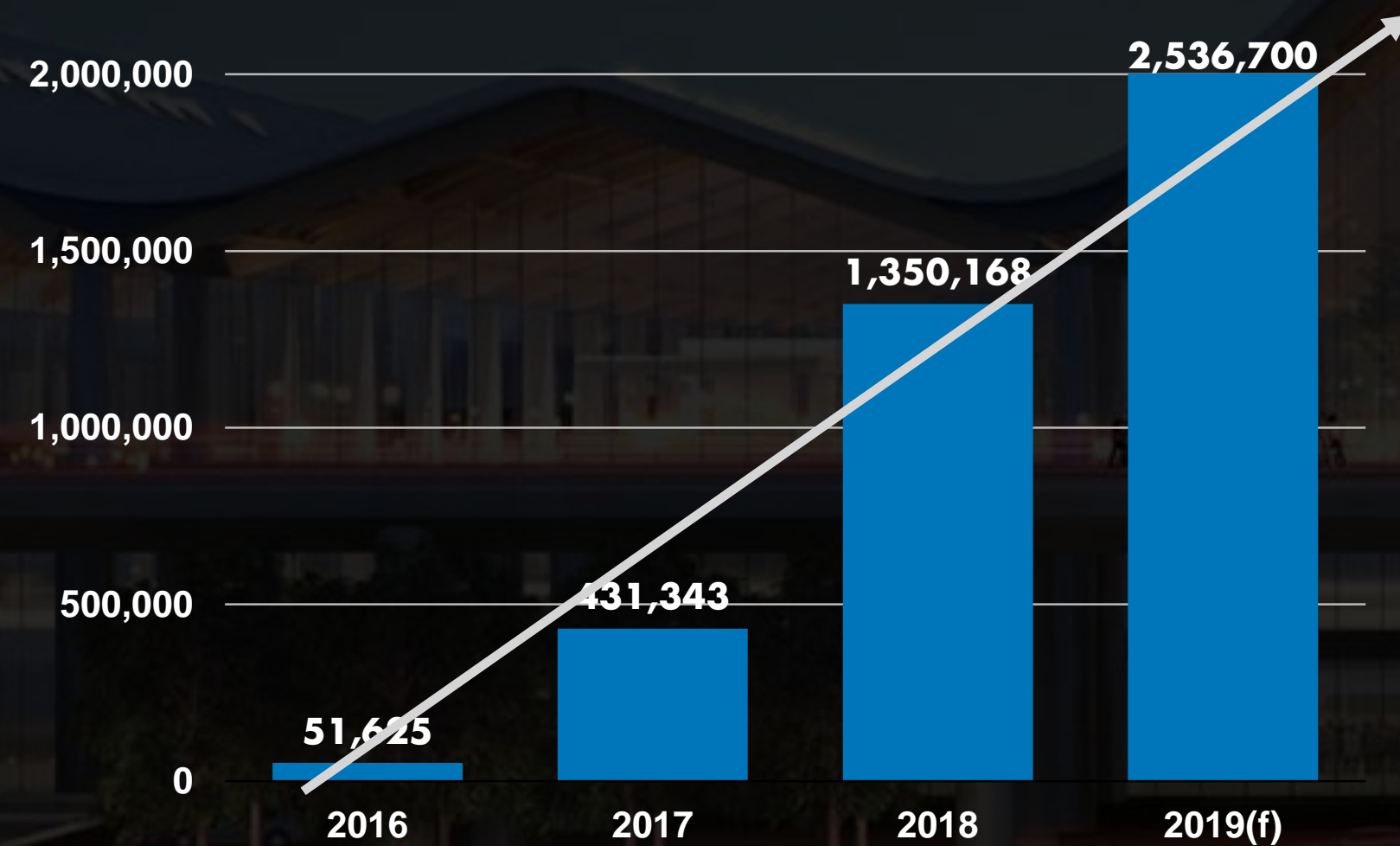
PAGSS
PHILIPPINE AIRPORT GROUND SUPPORT SOLUTIONS, INC.

CHANGI
airport group

TOTAL NUMBER OF INTERNATIONAL AND DOMESTIC PASSENGERS (2016 - 2019)

4,812%

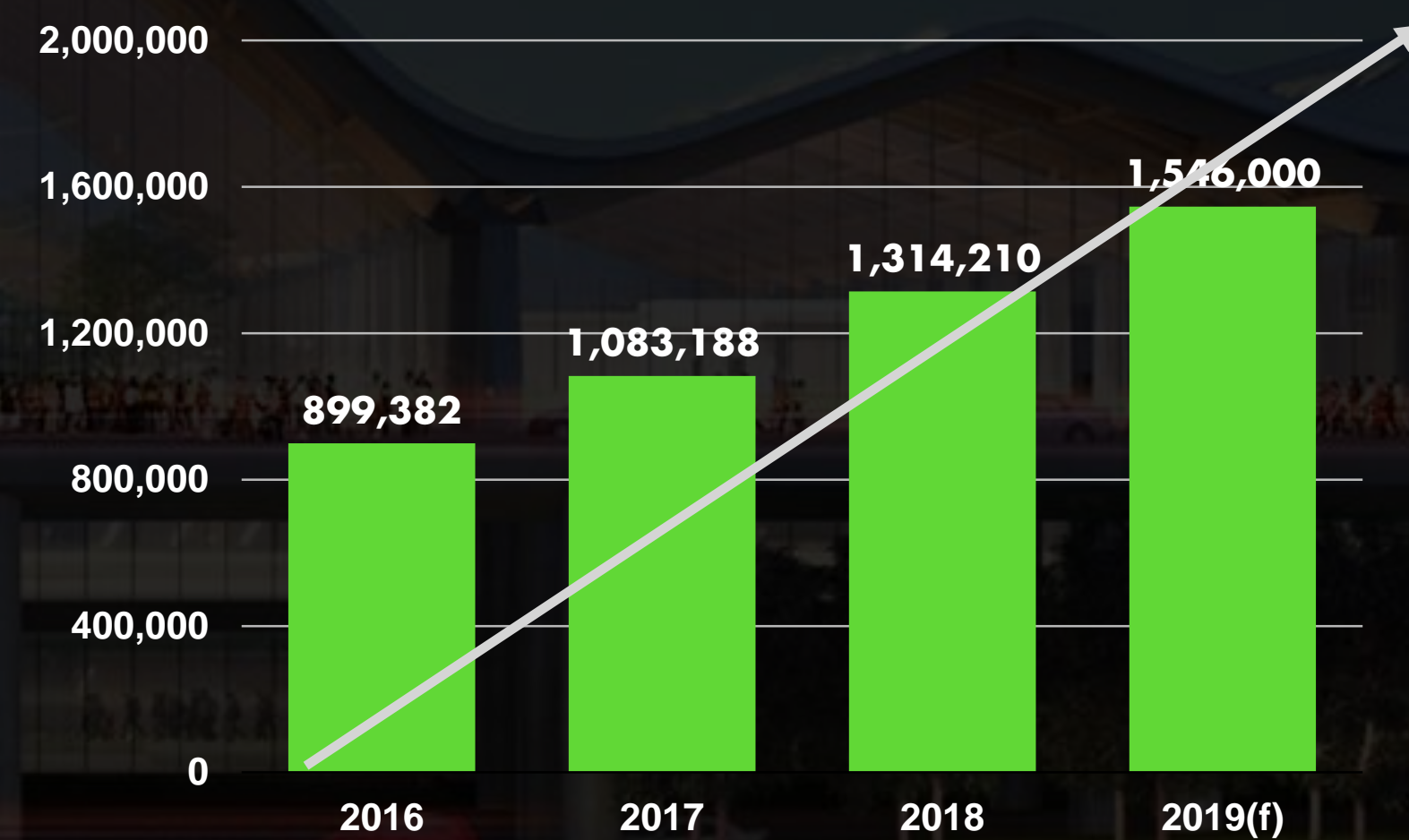
INCREASE OF DOMESTIC PASSENGERS



■ DOMESTIC

72%

INCREASE OF INTERNATIONAL PASSENGERS



■ INTERNATIONAL

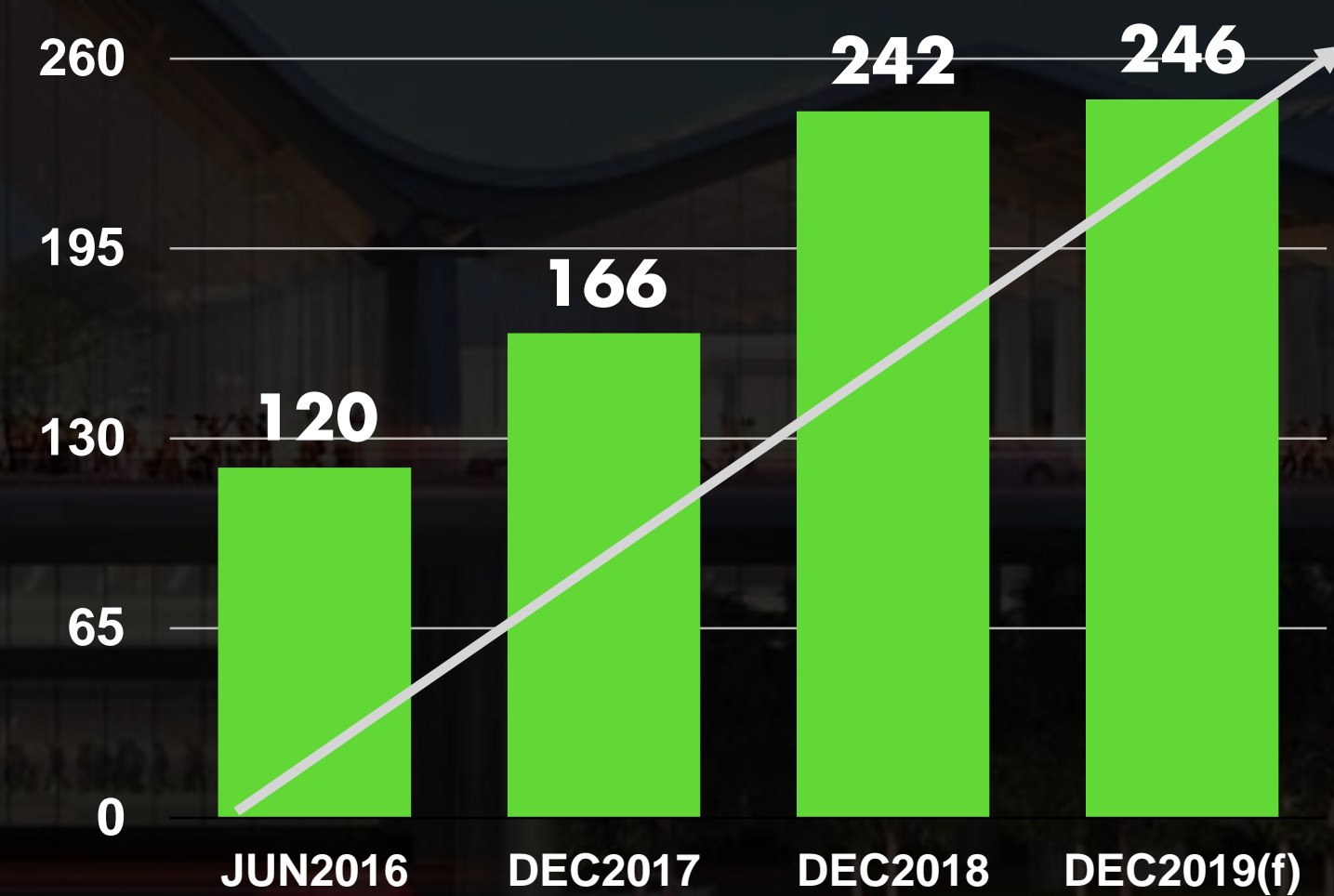
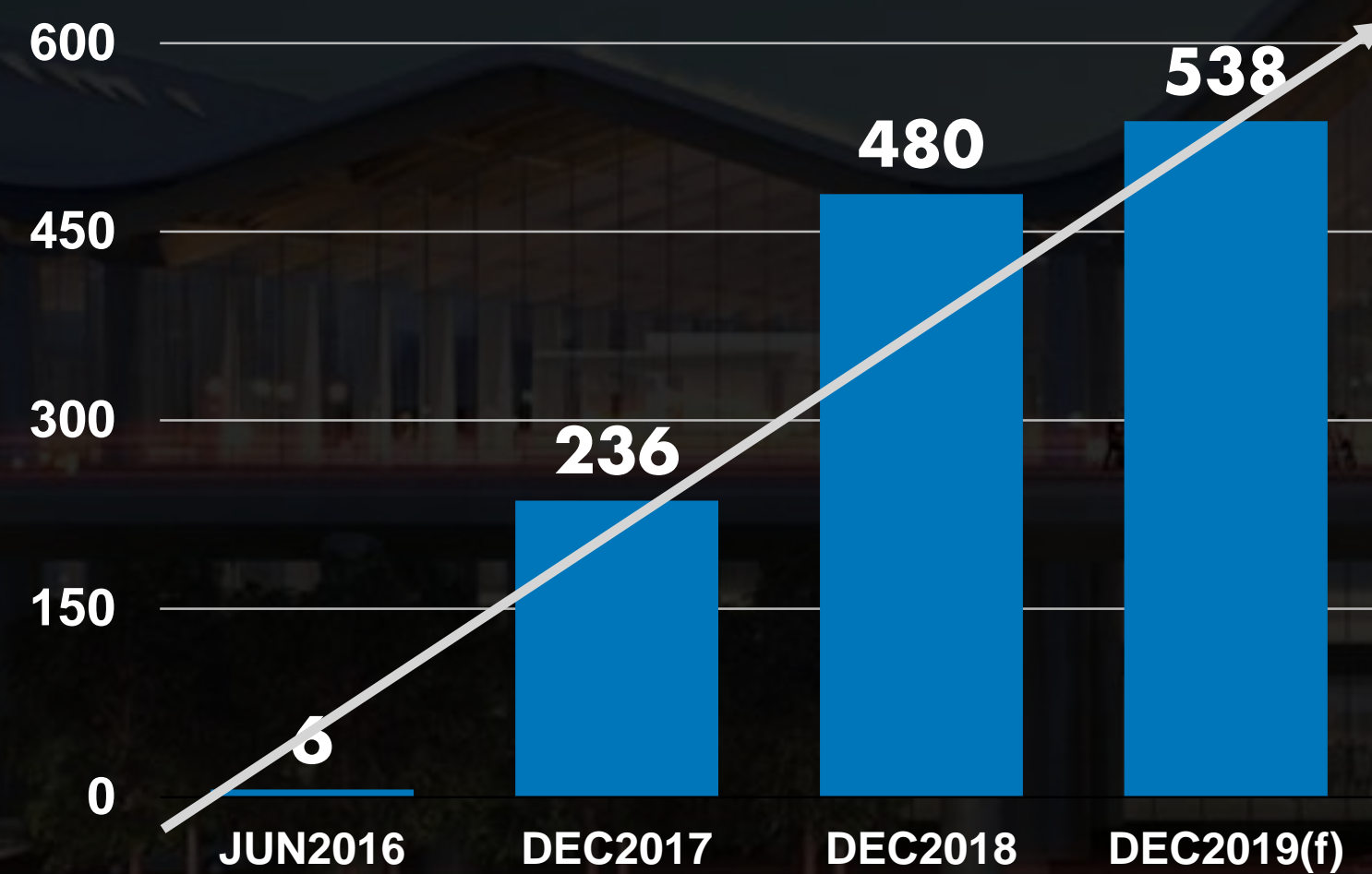
TOTAL NUMBER OF INTERNATIONAL AND DOMESTIC FLIGHTS PER WEEK (2016 - 2019)

8,866%

INCREASE OF DOMESTIC FLIGHTS

105%

INCREASE OF INTERNATIONAL FLIGHTS



■ DOMESTIC FLIGHTS

■ INTERNATIONAL FLIGHTS



ENTRANCE

IN PARTNERSHIP WITH





IN PARTNERSHIP WITH



CRK TRAIN STATION



**CLARK
INTERNATIONAL
AIRPORT
TERMINAL 2**

clark
It works. Like a dream.



THANK YOU