

Towards inclusive water management: taking action for South Asia

Neil Lazarow

Leader – International Water Group

LAND & WATER
www.csiro.au

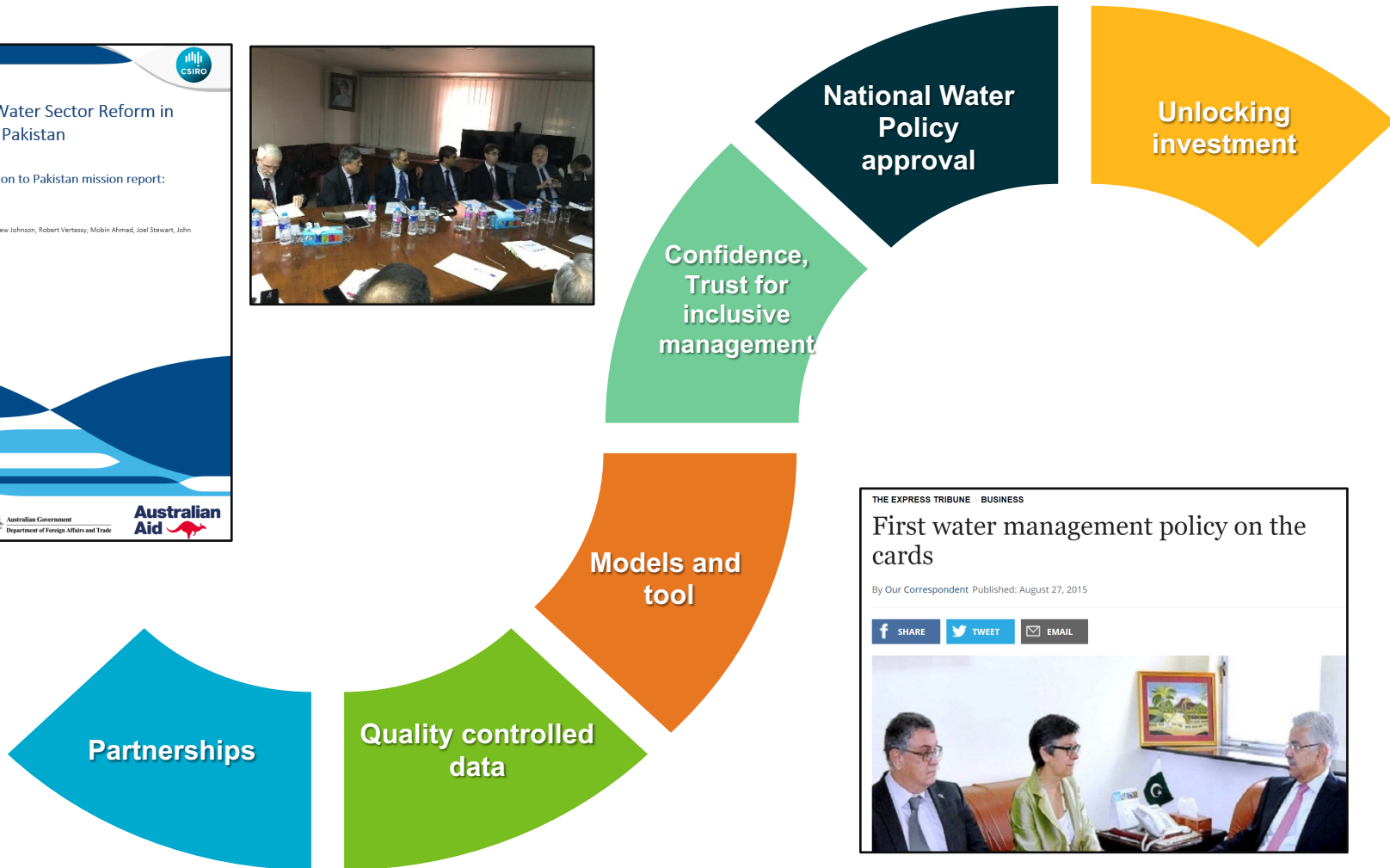
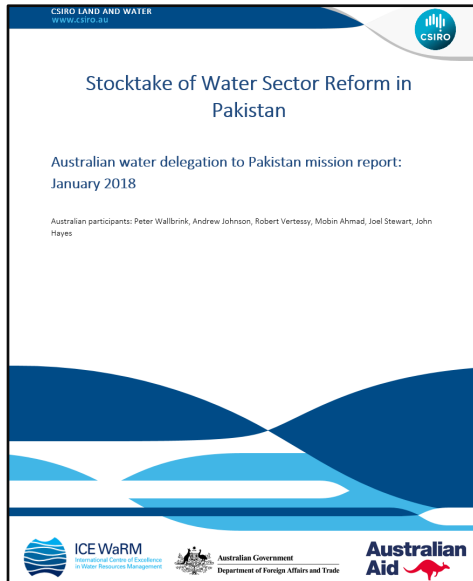
This is not an ADB material. The views expressed in this document are the views of the author/s and/or their organizations and do not necessarily reflect the views or policies of the Asian Development Bank, or its Board of Governors, or the governments they represent. ADB does not guarantee the accuracy and/or completeness of the material's contents, and accepts no responsibility for any direct or indirect consequence of their use or reliance, whether wholly or partially. Please feel free to contact the authors directly should you have queries.



Issue

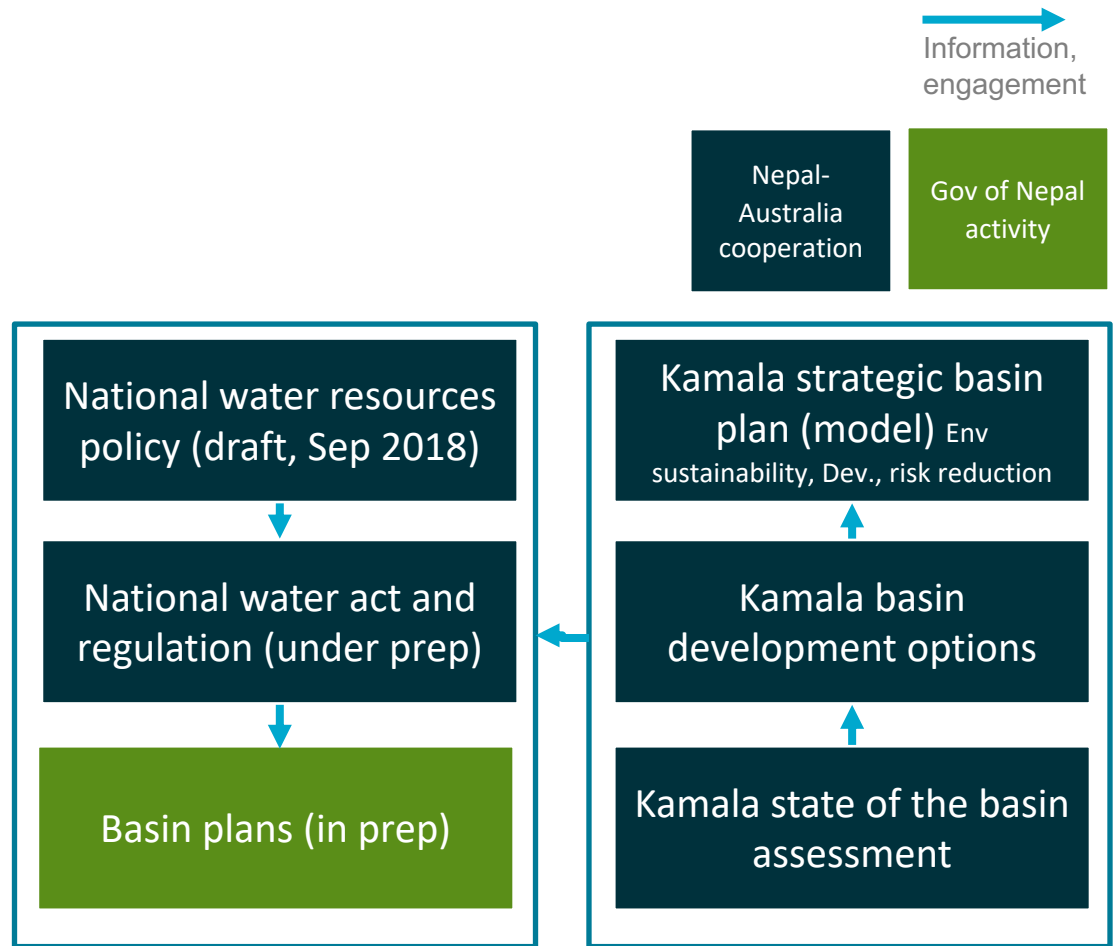
- Making nexus inclusive
 - Dynamics beyond trade-offs influence decision-making in the nexus
 - Inclusive water management – entry point for nexus implementation
- Our approach
 - Detailed intelligence to clarify options and risks in planning
 - Understand institutional framework and social values at different scales
 - Mainstream nexus into water sector policies, strategies and plans

National water policy- Pakistan



Water reform- Nepal

- New federal constitution
 - Need for new right-based development policy, act, regulation, plan in 3-tiers of government
- Nepal-Australia water cooperation
 - Experience sharing
 - Capacity strengthening
 - Exemplary strategic basin plan



Sustaining GW irrigation- Bangladesh

- Food security
 - Reliant on GW irrigated Boro rice
- Groundwater irrigation
 - Socially grounded sustainable extraction unknown
- How to make groundwater irrigation sustainable?
 - Policy - area specific to address local reasons for GWT decline
 - Reduce overall ET - replace rice with other crops
 - Augment recharge - plough deeper in the wet season to increase water retention in the field; promote recharge ponds and storages



Lessons

1. Strategic engagement and relationship building
2. Identify early entry points - e.g. agriculture? disaster?
3. Co-design and implement within existing mechanisms
4. Partner at multiple levels
5. Find, develop and encourage champions
6. Knowledge sharing and outreach
7. Measure change

A group of people, including a woman with a child on her back and several men, are standing on a concrete bridge over a stream. The background shows a rural village with a yellow building and lush greenery under a cloudy sky.

Thank you

CSIRO LAND and WATER

For more.

Neil.Lazarow@csiro.au

www.csiro.au

