

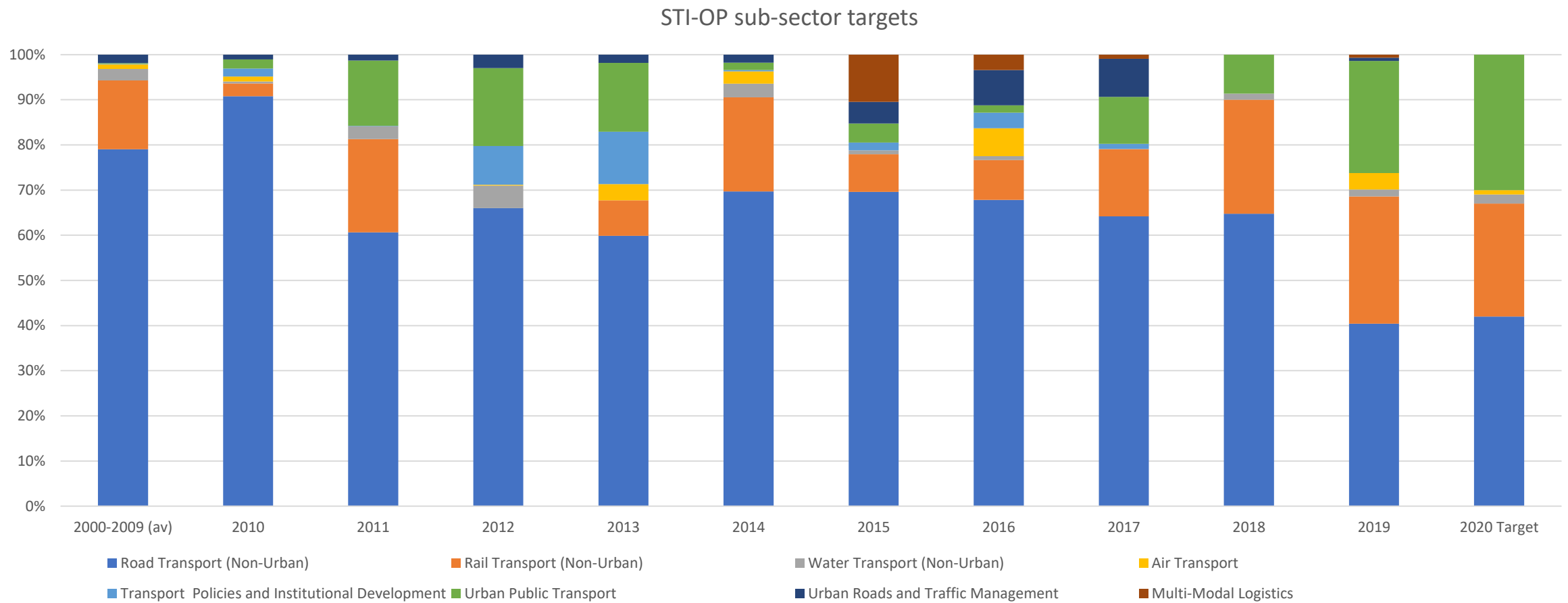
Infrastructure Sustainability a shift of priorities towards lifecycle cost and maintenance

Jamie Leather, Chief of Transport Sector Group

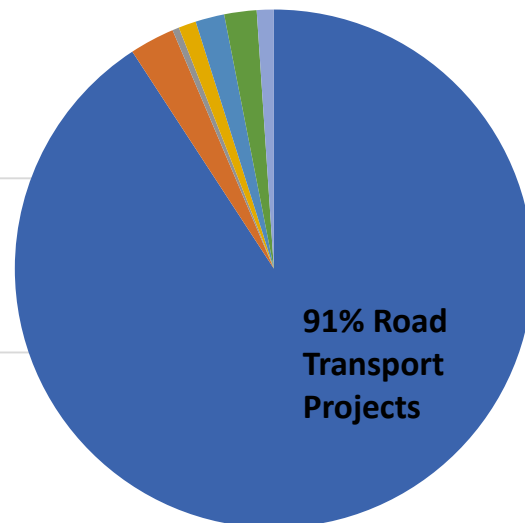


ADB Sustainable Transport Initiative

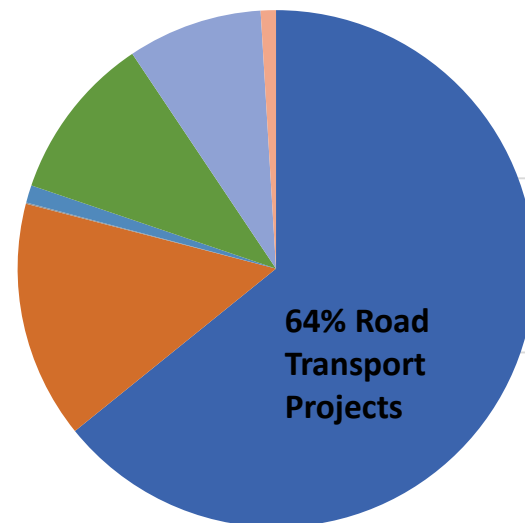
Growth in support for rail



2010 Sub-sector distribution



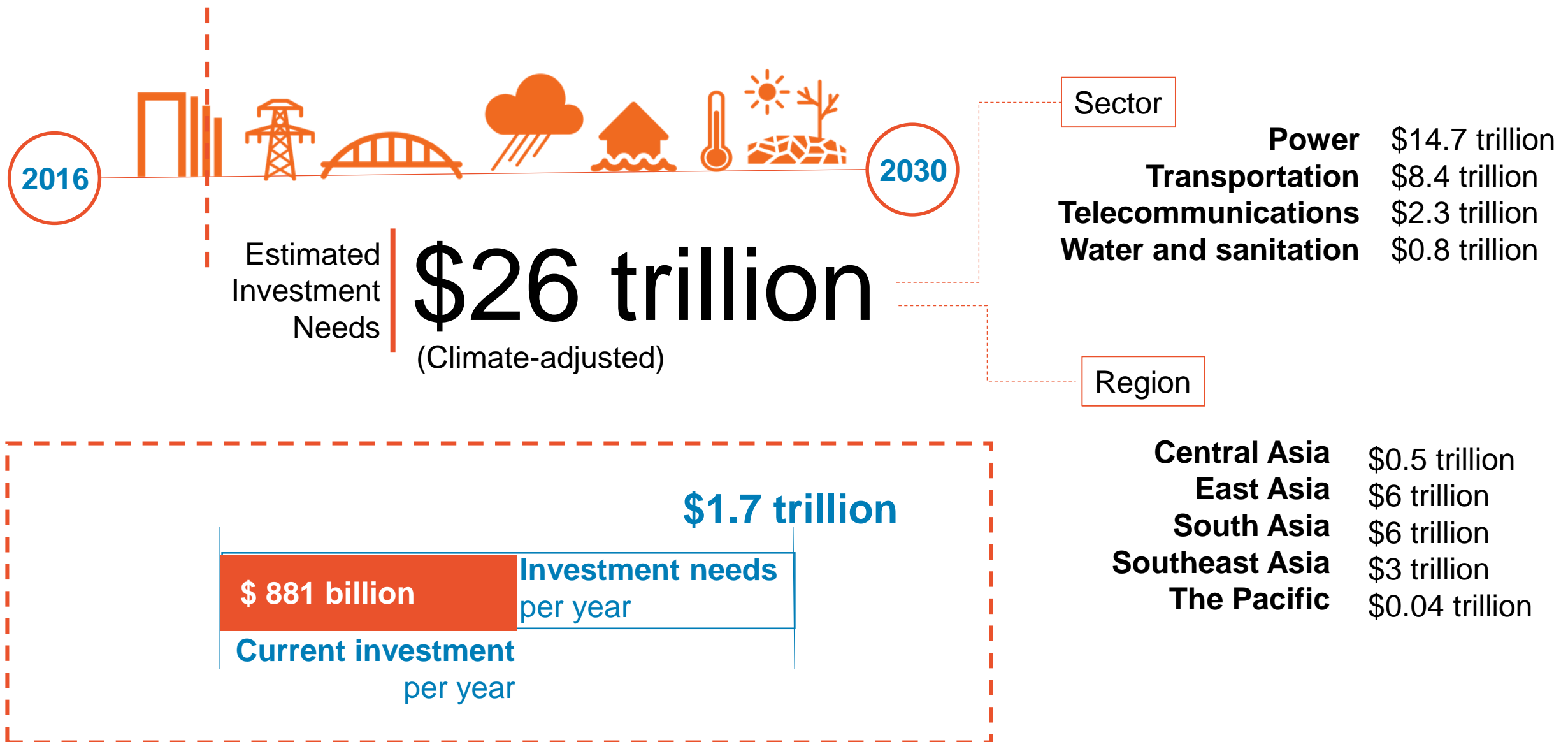
2017-18 Sub-sector distribution



The Asian Infrastructure Gap

Inadequate financing support for high-quality, high-capacity transport infrastructure and services

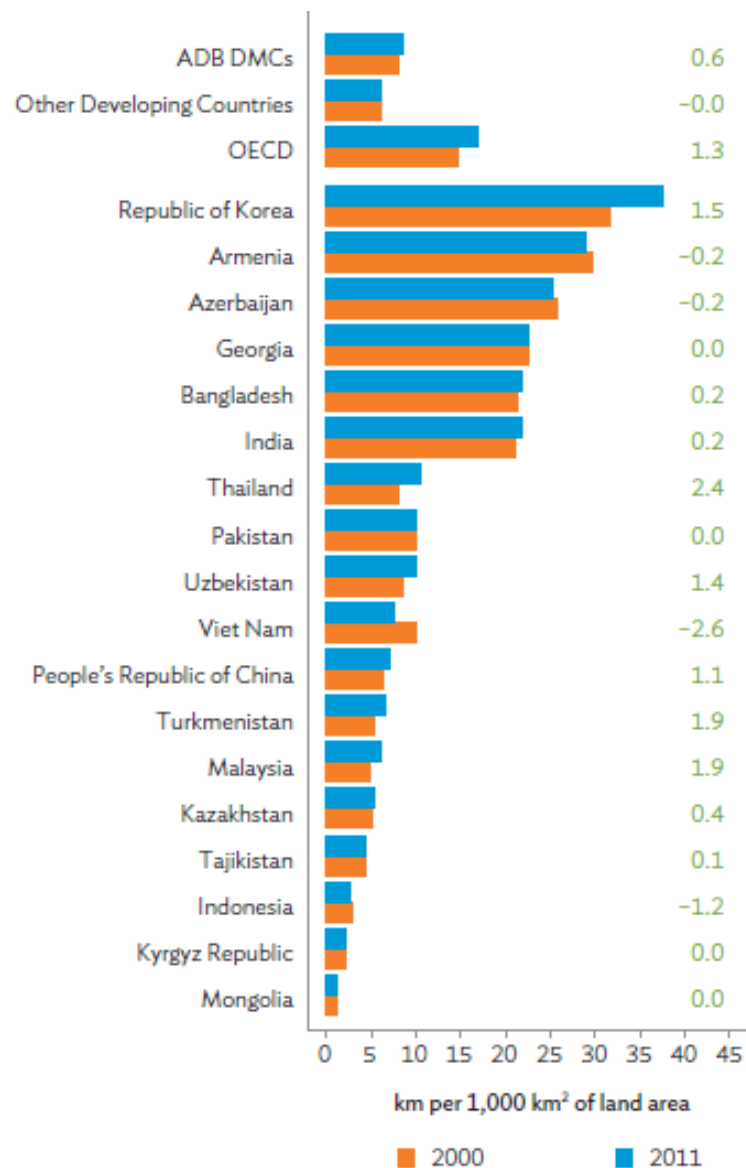
O&M even less well funded



Asia Railway needs

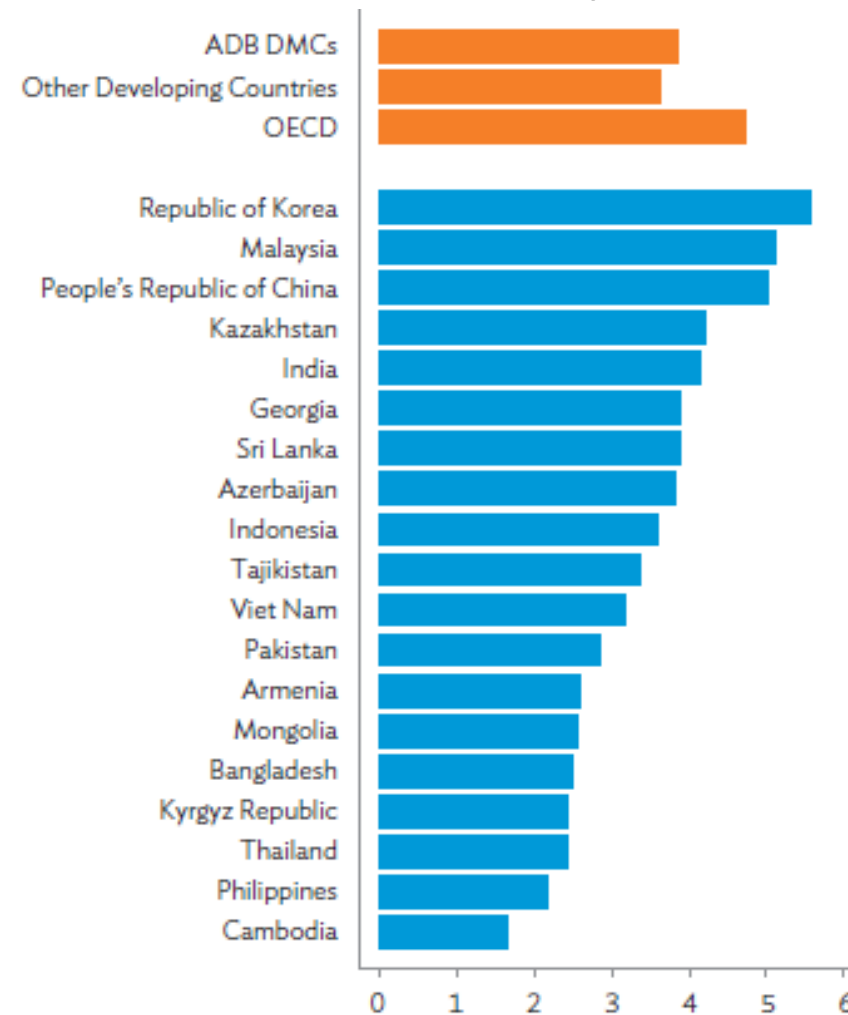
Rehabilitation, improved management and maintenance are key to improve railroad system standards and operations

Railroad Density and Growth (2015)



ADB = Asian Development Bank; DMC = developing member country;
 OECD = Organisation for Economic Co-operation and Development.
 Note: Figures in green refer to annualized growth rate (2000-2011).
 Regional averages are calculated with land area as weights.
 Source: World Development Indicators, World Bank.

Railroad Quality (2015)



ADB = Asian Development Bank; DMC = developing member country;
 OECD = Organisation for Economic Co-operation and Development.
 Note: Railroad quality is measured based on perception scores in a 7-point scale (higher scores mean better railroad quality).
 Regional averages of quality are calculated with length of railroad as weights.
 Source: World Economic Forum (2015).

Lifecycle cost, maintenance and operations

Lifecycle cost

- Construction and Operations considerations
- Broader assessment

Maintenance

- Maintenance contracts
- Integrated system development and operations

Operations

- Capacity development
- Efficiency gains
- Private sector involvement

Areas of Assistance changing

- Changing demands from clients
 - System management
 - Efficiency gains
 - Value addition
- Incorporate new technologies and uses
- Increased attention on private sector support
- Broader use of financial services to meet demands

Sample assistance

- GEO: Tbilisi Metro Extension and Rehabilitation (\$300m)
- THA: Bangkok Mass Rapid Transit Project (\$318m)
- AZE: Railway Sector Development Program (\$400m)
- BAN: Railway Rolling Stock Improvement (\$560m)



Thank you.

