



ReCAP
Research for Community Access Partnership



Research for Community Access Partnership (ReCAP)

This is not an ADB material. The views expressed in this document are the views of the author/s and/or their organizations and do not necessarily reflect the views or policies of the Asian Development Bank, or its Board of Governors, or the governments they represent. ADB does not guarantee the accuracy and/or completeness of the material's contents, and accepts no responsibility for any direct or indirect consequence of their use or reliance, whether wholly or partially. Please feel free to contact the authors directly should you have queries.



Introduction to ReCAP

- Applied research to improve the evidence base on Low Volume Rural Roads (LVRRs) and the transport services that use them
- Funded by the UK government through DFID
- 6 year programme (2014-2020)
- £24m research budget
- Managed by Cardno Emerging Markets (UK) Limited



AfCAP Partner Countries

- DRC
- Ethiopia
- Ghana
- Kenya
- Liberia
- Malawi
- Mozambique
- Sierra Leone
- South Sudan
- Tanzania
- Uganda
- Zambia



AsCAP Partner Countries

- Myanmar (Burma)
- Bangladesh
- Nepal
- Pakistan
- Afghanistan



Research themes are:

- Provision of access
- Preservation of access
- Effective use of rural access (transport services)
- Cross-cutting issues:
 - Gender mainstreaming
 - Road safety
 - Capacity building





ReCAP
Research for Community Access Partnership

Regional Projects

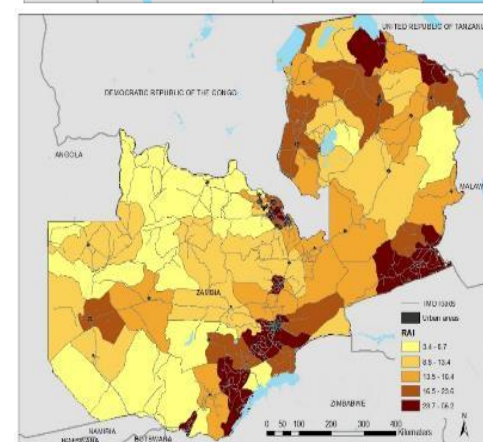
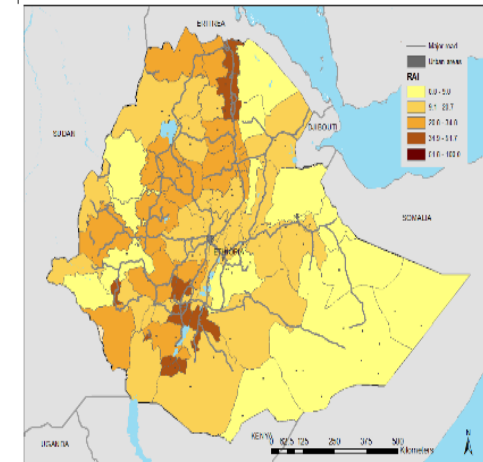
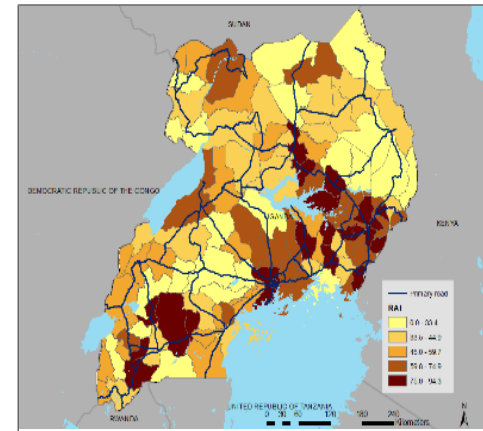
- Asset management
- Back analysis
- Climate adaptation
- Leadership development
- Materials database
- Motorcycle safety
- Satellite imagery
- First mile research
- Gender mainstreaming cluster

www.research4cap.org



Rural Access Index (RAI) Status Review

- 2006 RAI definition:
'Percentage of rural people who live within 2 km of an all season road as a proportion of the total rural population'
- 2015-16: methodology using spatial data to measure the rural access index
 - High resolution population distribution data
 - Detailed road condition
 - Online open data platform



Thank you for your attention

www.research4cap.org

Follow ReCAP on:



#IRIM2017