



REPUBLIC OF THE PHILIPPINES

NATIONAL ECONOMIC AND DEVELOPMENT AUTHORITY

Monitoring the SDGs: Philippine initiatives for managing for results

This is not an ADB material. The views expressed in this document are the views of the author/s and/or their organizations and do not necessarily reflect the views or policies of the Asian Development Bank, or its Board of Governors, or the governments they represent. ADB does not guarantee the accuracy and/or completeness of the material's contents, and accepts no responsibility for any direct or indirect consequence of their use or reliance, whether wholly or partially. Please feel free to contact the authors directly should you have queries.

ROLANDO G. TUNGPALAN

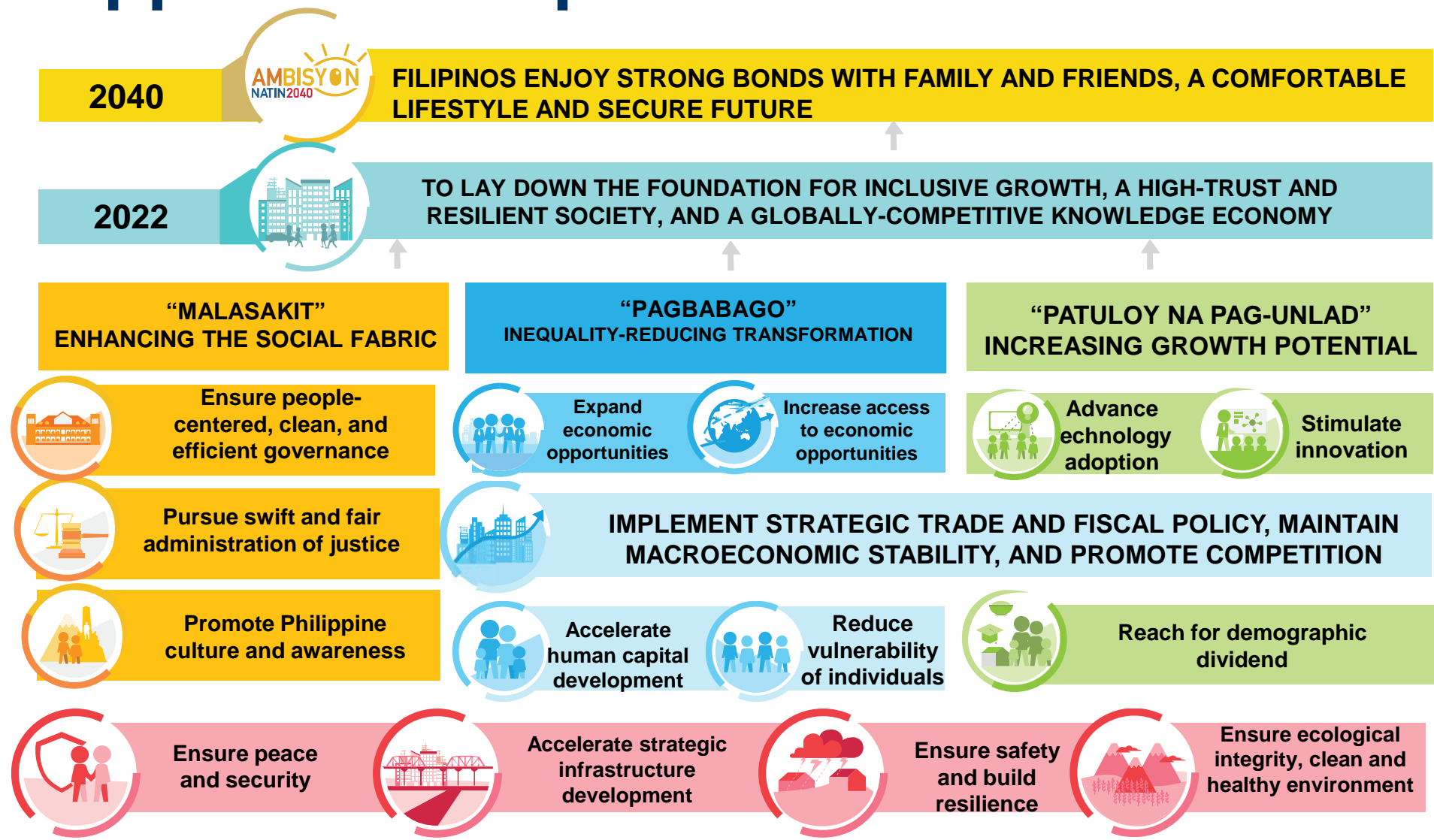
Undersecretary

National Economic and Development Authority

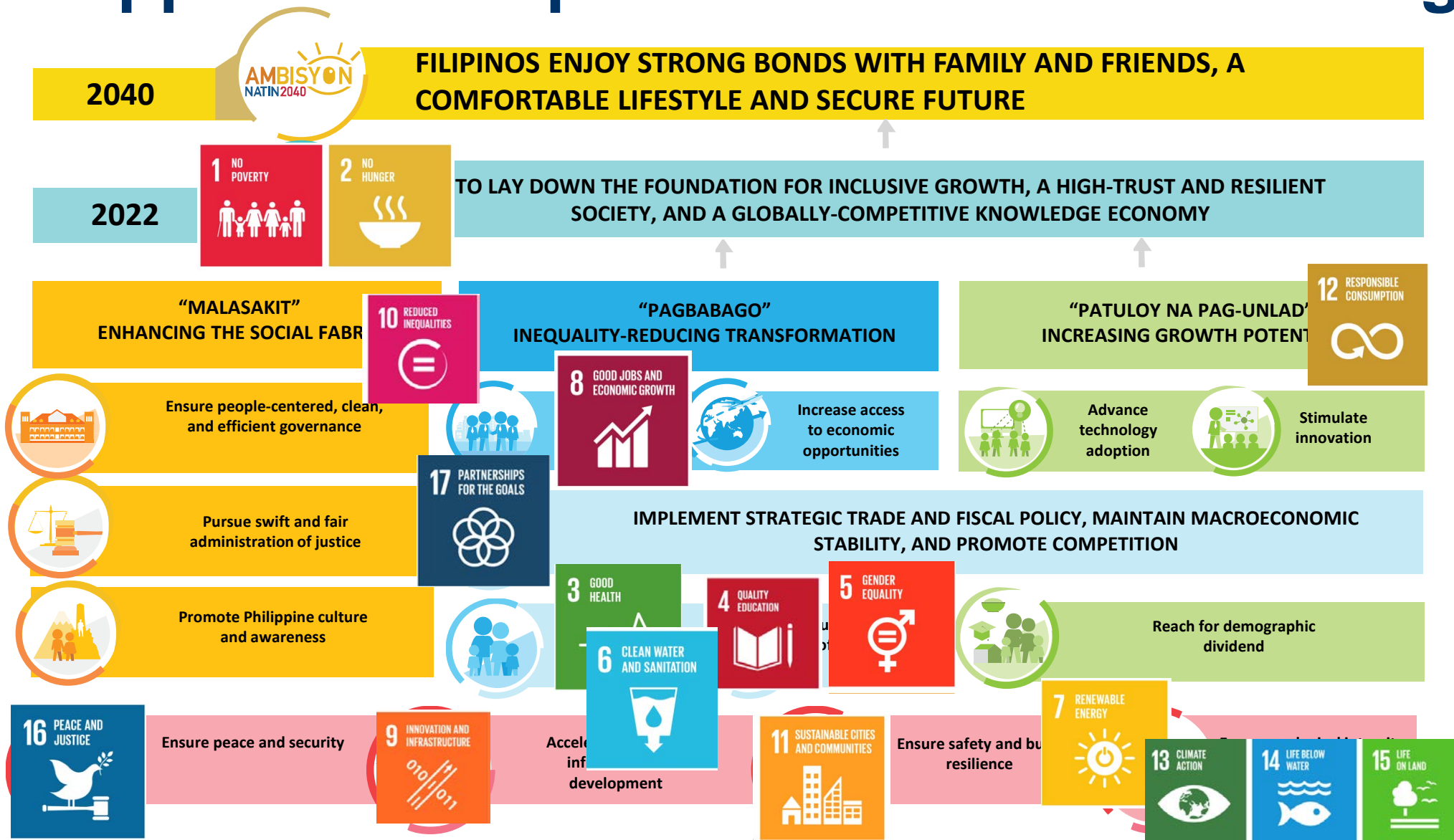
- The SDGs are integrated in the PDP 2017-2022
 - Reflects all 17 SDG
 - PDP is basis for budget appropriations
- Integration of SDGs in sectoral plans
 - National Plan of Action for Children
 - Philippine Health Agenda
 - National Urban Development and Housing Framework
- Proposed programs in the Philippine Investment Program 2017-2022 are tagged to the SDGs



The Philippine Development Plan and the 2030 Agenda



The Philippine Development Plan and the 2030 Agenda



Implementing and monitoring the PDP 2017-2022

- PDP implementation is coordinated through:
 - NEDA Board and its committees
 - Social Development Committee (on education, health, social protection)
 - Infrastructure Committee (on infrastructure development)
 - Cabinet Clusters (EO 24)
 - Climate Change Adaptation, Mitigation and Disaster Risk Reduction Cluster (on climate action, environment, DRRM)
 - Security, Justice and Peace Cluster (on peace and security)
- PDP is to be monitored through:
 - Annual Socioeconomic Report
 - Results matrix

Mechanisms to manage for results



Sample Chapter Results Matrix (RM)

PHILIPPINE DEVELOPMENT PLAN RESULTS MATRICES 2017-2022

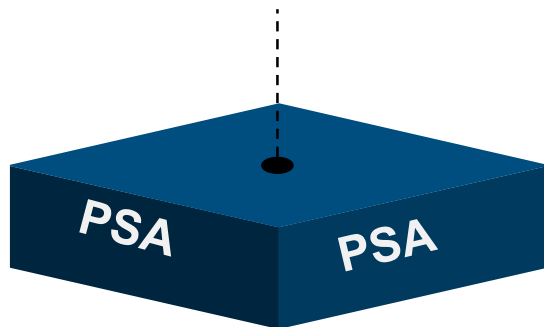
CHAPTER 10: ACCELERATE HUMAN CAPITAL DEVELOPMENT

Objectives/Results	U + 10 Pt Socio-economic Agenda	SDG	Indicator	Baseline ^a		Annual Plan Targets						Plan Target ^b	Means of Verification	Responsible Agency ^c	Reporting Entity ^d	Assumptions and Risk	
				Year	Value	2017	2018	2019	2020	2021	2022						
Societal Goal																	
Foundation for inclusive growth, a high-trust and resilient society and a globally competitive knowledge economy built																	
Intermediate Goal																	
Inequality reduced																	
Sub-chapter Outcome 1																	
Care at all life stages guaranteed	7	3	Maternal mortality ratio per 100,000 live births*	2011	221.0			100				90	90	CRVS	DOH	PSA	Assumptions: -Families and communities practicing healthy lifestyle -Sustained LGU commitment and strengthened capacities to deliver basic services and supplies -Health professionals prefer to work in the country -Country continues to improve economic performance -Cooperation and alignment of initiatives among all stakeholders -Supportive policy environment in legislature and judiciary Risks: -Changes in political leadership -Competing priorities of LGUs -Occurrence of natural disasters and armed conflicts -Emergence of new diseases -Rapid urbanization and increasing internal migration straining public health services
	7	3	Neonatal mortality rate per 1,000 live births*	2013	13			12				10	10	NDHS	DOH	PSA	
	7	3	Infant mortality rate per 1,000 live births	2013	23			17				15	15	NDHS	DOH	PSA	
	7	3	Under-5 mortality rate per 1,000 live births*	2013	31			25				22	22	NDHS	DOH	PSA	
	7	3	Premature mortality attributed to cardiovascular disease, cancer, diabetes, and chronic respiratory diseases per 100,000 population*	2013	162.0						by 2030, reduced by one-third (SDG)	by 2030, reduced by one-third (SDG)	CRVS	DOH	PSA		
	7	3	Death rate due to road traffic accidents per 100,000 population*	2014	8.9			7.0				6.3	6.3	CRVS	DOH	PSA	
	7	3	Proportion of households meeting 100% recommended energy intake*	2015	31.7			36.5				37.1	37.1	NNS	NNC	DOST-FNRI	
	7	3	Prevalence of stunting among children under 5 (%)*	2015	33.4			26.7				21.4	21.4	NNS	NNC	DOST-FNRI	
	7	3	Prevalence of wasting among children under 5 (%)*	2015	7.1			5.5				<5	<5	NNS	NNC	DOST-FNRI	
	7	3	Prevalence of overweight among children under 5 (%)*	2015	3.9			≤3.9				≤3.9	≤3.9	NNS	NNC	DOST-FNRI	
	10	3	Adolescent birth rate (aged 15-19 years) per 1,000 women in that age group*	2013	57.1			47.0				40.0	40.0	NDHS	DOH/POPCOM	PSA	
	7	3	Tuberculosis incidence per 100,000 population*	2015	322.0	299.0	287.0	273.0	258.0	242.0	225.0	225.0	Program Data	DOH	DOH		

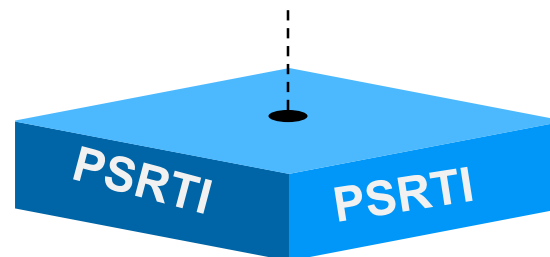
Institutional Organization for SDG Statistical Development



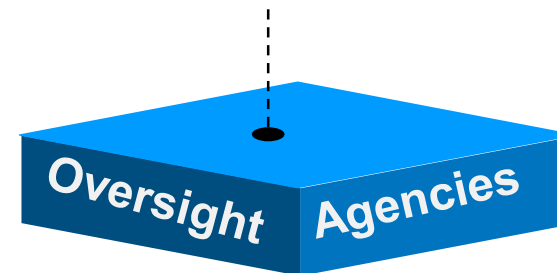
Serve as repository of SDG data, develop mechanisms for timely and accurate statistics, develop and maintain a webpage on SDGS, SDGI database and SDG Watch



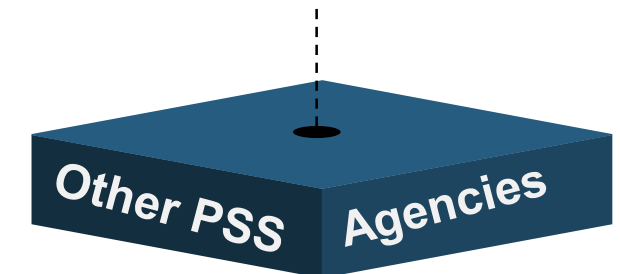
Conduct capacity building activities and methodological researches



Ensure resources and include statistical development initiatives in agency work programs and budgets



Monitor and implement PSDP activities on the SDGs, and include in budget submissions funding for the generation, management and archiving of SDG indicators



Some of our initiatives to address data gaps include:

- Inclusion of SDGs Chapter in Philippine Statistical Development Program
- Improving data collection
 - Improving admin-based data
 - Capacity-building
 - Open Data Portal
 - Use of computer-aided personal interview
 - Strengthening of local level statistics
- Conduct of workshops and advocacy activities

27th NATIONAL STATISTICS MONTH
OCTOBER 2016

"Sustainable Development: Making Statistics Count"

Host Agencies:
PHILIPPINE STATISTICS AUTHORITY
Opening Ceremony
October 3, 2016
Isla Ballroom, Edsa Shangri-La Hotel
Mandaluyong City

BANGKO SENTRAL NG PILIPINAS
Closing Ceremony
October 28, 2016
BSP Assembly Hall
BSP Three-Storey Bldg.
Malate, Manila

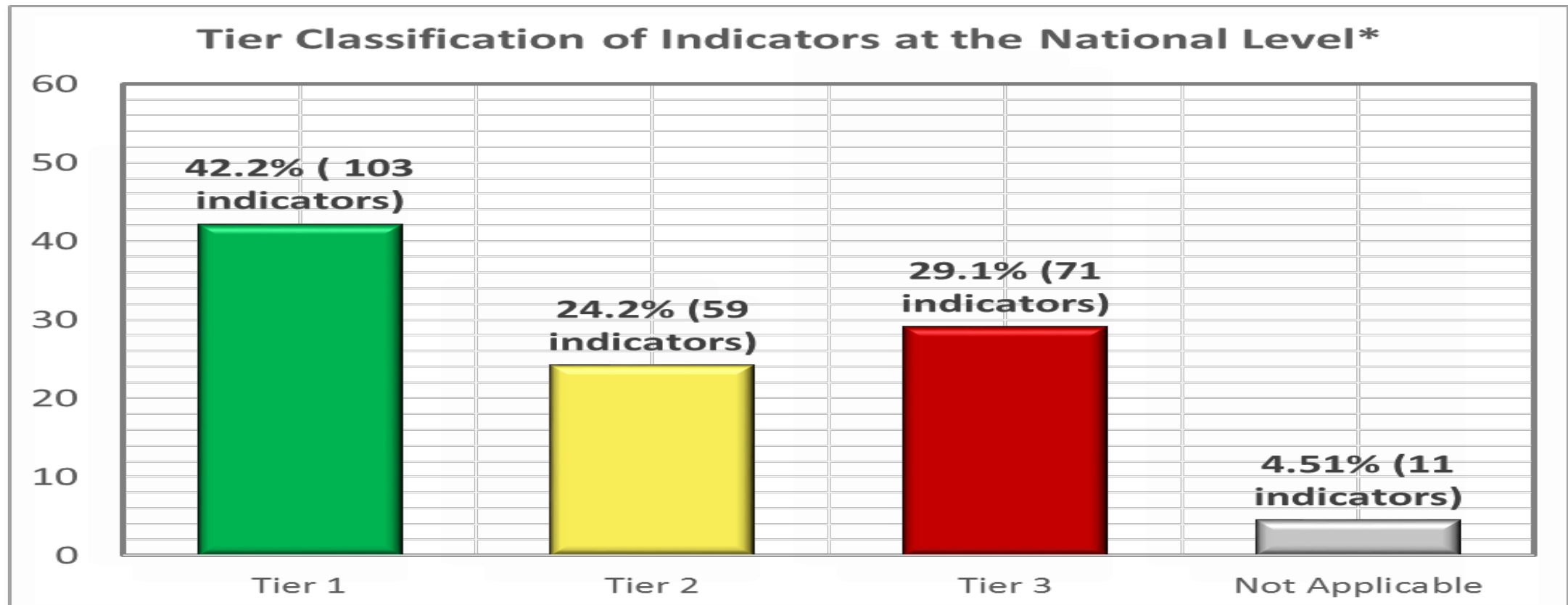


Organized by the PHILIPPINE STATISTICAL SYSTEM
Spearheaded by the PHILIPPINE STATISTICS AUTHORITY

Visit URL: <http://www.psa.gov.ph/nsm>
E-mail: nationalstatmonth@gmail.com
Tel. Nos. (632)376-1928, 376-1867

Data gaps

Currently, there are 221 global indicators applicable to the country, and only 103 are Tier 1 indicators



* Updated based on consultations/bilateral meetings with data source agencies

Localization of the SDGs

- Logistical challenges in engaging local stakeholders

Engaging development stakeholders

- Private sector and international development partners
- Civil society organizations
- Academe

Evaluation capacity

- Ensuring evidence for development planning and programming





REPUBLIC OF THE PHILIPPINES

NATIONAL ECONOMIC AND DEVELOPMENT AUTHORITY

Monitoring the SDGs: Philippine initiatives for managing for results

ROLANDO G. TUNGPALAN

Undersecretary

National Economic and Development Authority