



This is not an ADB material. The views expressed in this document are the views of the author/s and/or their organizations and do not necessarily reflect the views or policies of the Asian Development Bank, or its Board of Governors, or the governments they represent. ADB does not guarantee the accuracy and/or completeness of the material's contents, and accepts no responsibility for any direct or indirect consequence of their use or reliance, whether wholly or partially. Please feel free to contact the authors directly should you have queries.

Bikesharing systems in China

Li Shanshan, ITDP
ITDP-China, www.itdp-china.org, www.itdp.org
ADB, 19 May 2015



广州市现代快速公交
和可持续交通研究所

Institute for Transportation
& Development Policy



Public bicycle system





Hangzhou
2,700 stations, over 70,000 bikes



Zhuzhou
502 stations, 20,000 bikes



Lanzhou
344 stations, 6,500 bikes, 9,880 docks



Bikesharing integrated with BRT system



ITDP-China, itdp.org.cn

Guangzhou
113 stations, 5,000 bikes

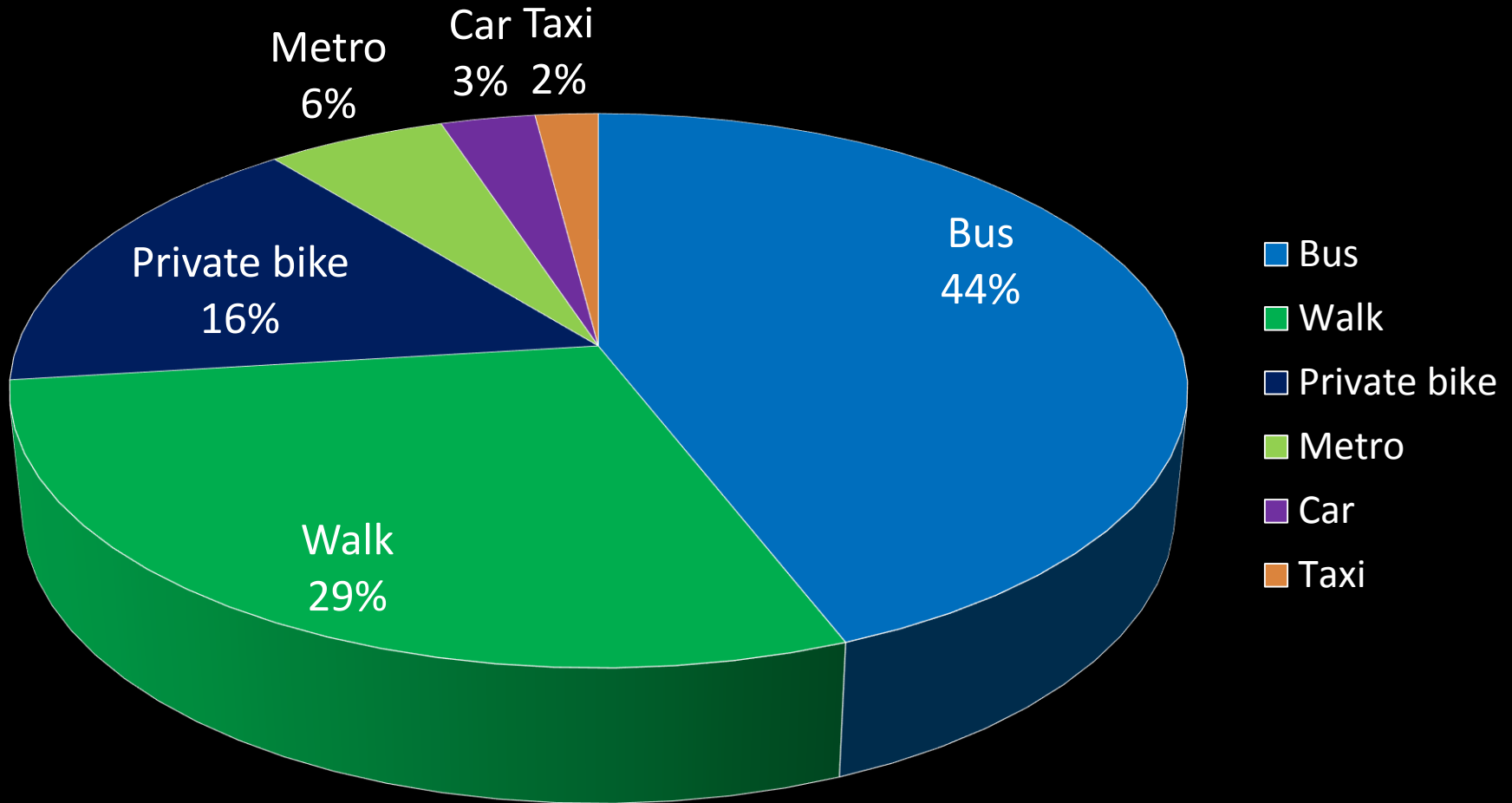


100,000 bikes is coming at the
end of this year in Guangzhou

Benefit of bikesharing system

- Solve the last mile problem and provide a complement to metro, BRT and bus system
- Best solution for short trips
- Encourage more people to ride bicycles

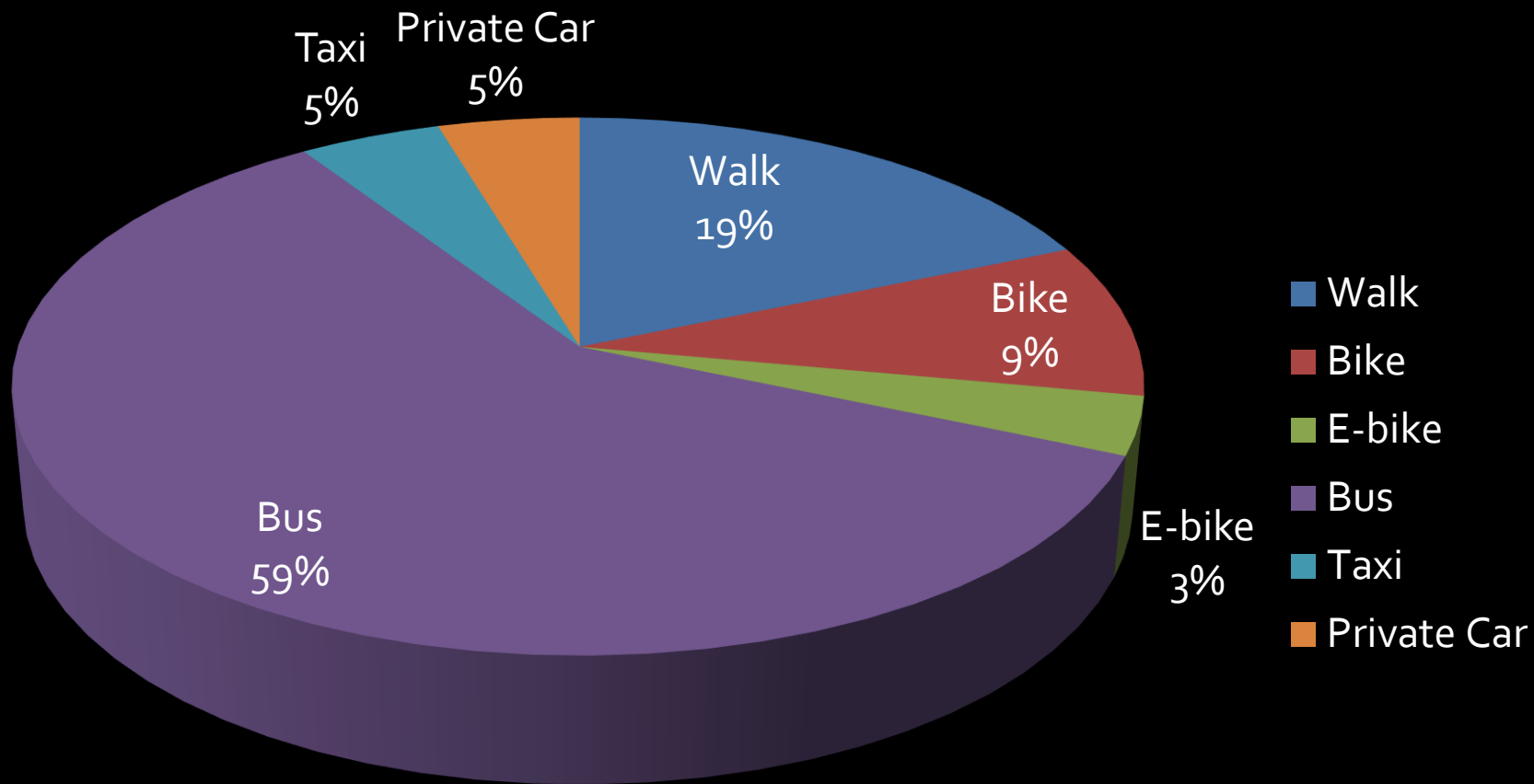
Mode shift from



Guangzhou

84% bikesharing users are new cyclists

Mode shift from:



Hangzhou

91% bikesharing users are new cyclists

- Low initial cost and operational cost

Initial cost for bikeshairng system in China:

- Hangzhou system: 800USD/bike
- Shanghai system: 1,000USD/bike
- Zhuzhou system: 1,500 USD/bike

Operational cost for bikesharing system in
China:

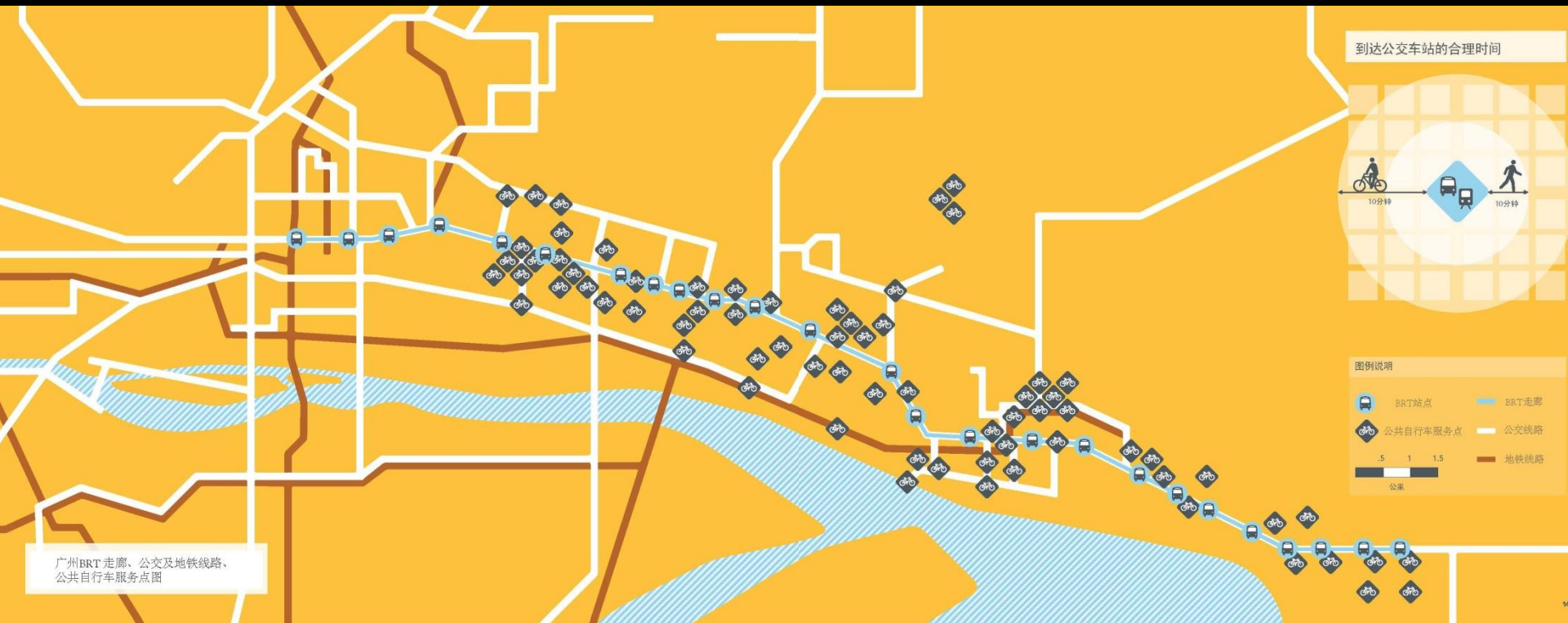
200 – 300 USD/bike/year

Bikesharing system encourages new modern bicycle infrastructure

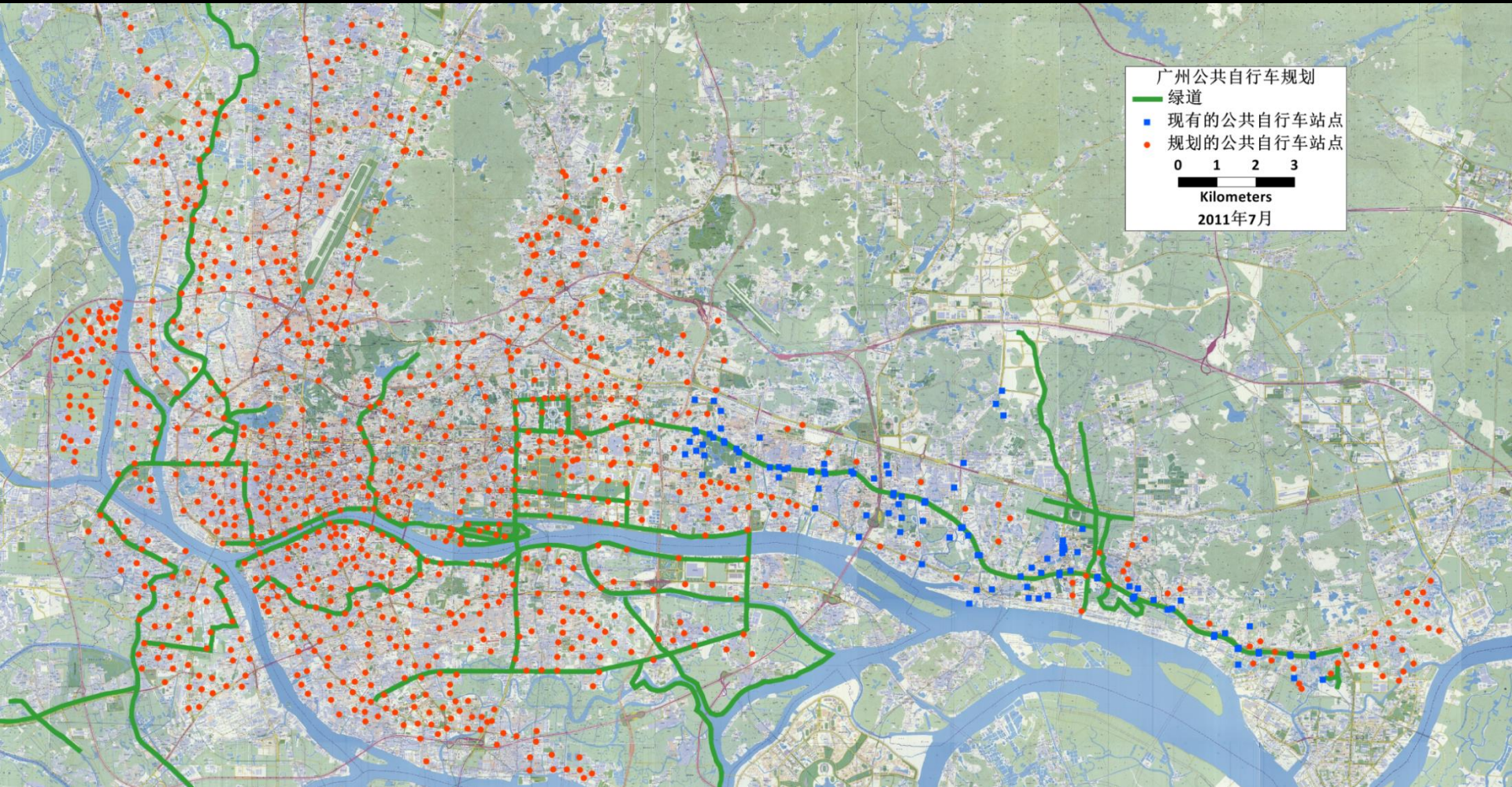


Opportunities for public bicycle system in China

- Integrated with BRT project (Guangzhou and Lanzhou)



- Integrated with greenway project



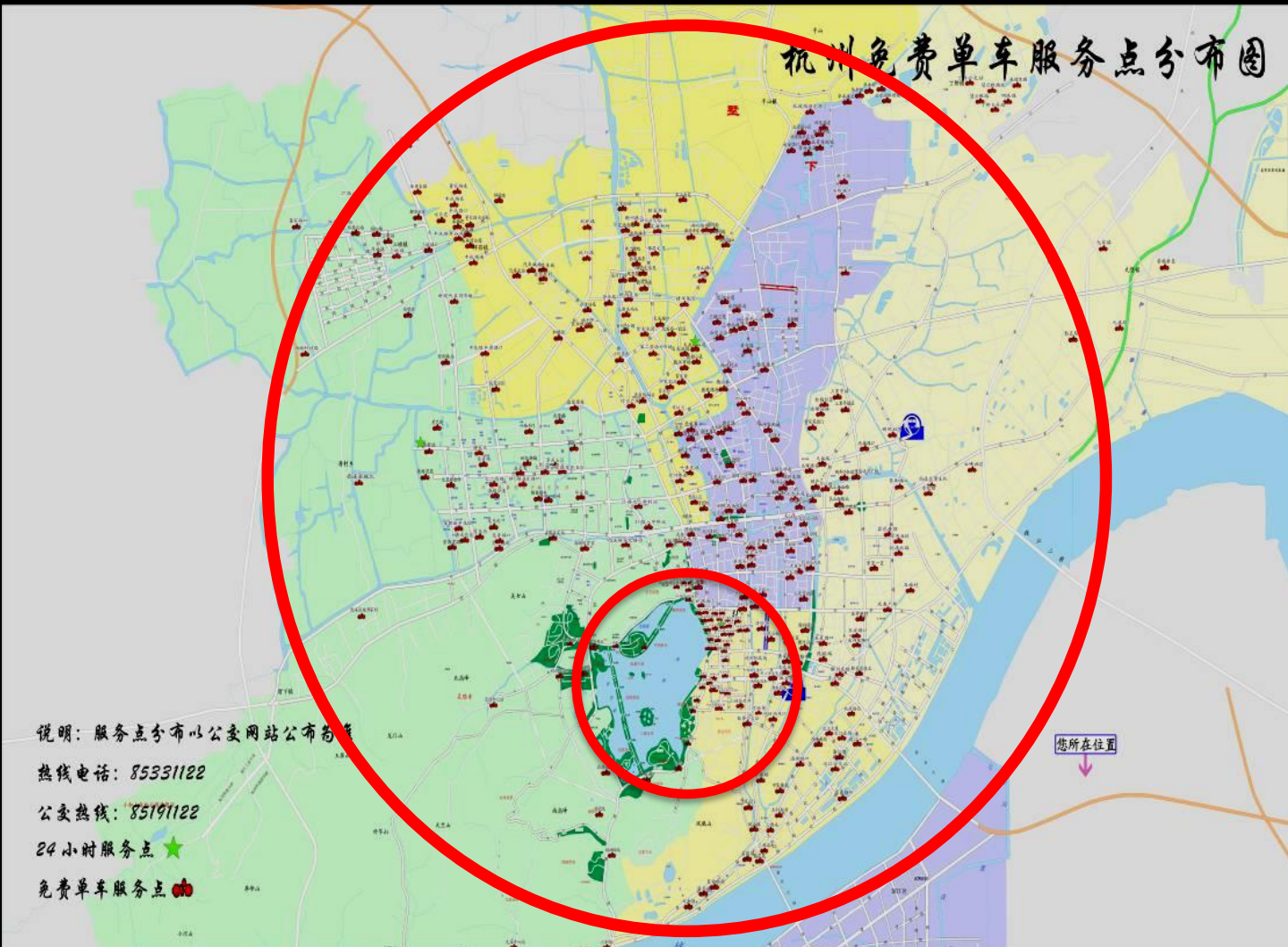
- Start as a tourism function



- 1 May, 2008, 61 stations with 2800 bicycles, around West Lake area.
- Sep 2008, 141 stations with 6524 bicycles.
- Feb 2009, 350 stations with 10,000 bicycles
- Apr 2009, 640 stations with 16,000 bicycles
- May 2009, 800 stations with 20,000 bicycles
- Sep 2009, 1380 stations with 33,000

Hangzhou, China

- Start as a tourism function



Now, 2,700 stations with 70,000 bicycles, stations all around the whole city.

Hangzhou, China

Key recommendations of developing public bicycle system

- Strong support from city government and senior leadership
Hangzhou vice mayor is the team leader of bikesharing system development group.
- Government pay the capital cost and support bikesharing operation
- Opportunities to implement public bicycle system with other larger transport system
- High quality infrastructure and software

Revenue Streams in China

- Used in some Chinese cities:
 - Government subsidy
 - Usage fees
 - Advertising
 - Retail and tickets at station kiosks
 - Became bikesharing system supplier
- Has potential for revenue in Chinese cities:
 - Membership fee
 - Temporary visitor membership
 - System sponsorship
 - Private investments
 - Parking revenue and congestion charges

Thank you!


 广州市现代快速公交和可持续交通研究所
 Institute for Transportation & Development Policy

Updated: 9-Apr-2015

Bike Sharing Information

[中文](#)



[Bike sharing systems](#) ▶ [Bike sharing photos](#) ▶ [Quantitative parameters](#) ▶ [Qualitative parameters](#) ▶ [Asia](#) ▶ [Europe](#) ▶ [Americas](#)

City	City	City	City	City	City	City
Akesu	Bike sharing expansion in China.					
Anqiu	Foshan	Jiayuguan	Mianyang	Ruian	Taizhou	Xinjin
Baoji	Fuzhou	Jinhua	Montreal	Shanghai	Taizhou (Jiangsu)	Xuchang
Barcelona	Gaoming	Jining	Nanchang	Shanghai Zhoupu	Tengzhou	Xuzhou
Beijing Chaoyang	Guadalajara	Jiujiang	Nanjing Hexi	Shangrao	Tianjin	Yangzhou
Beijing Pinggu	Guangan	Jiyuan	Nanjing Jiangning	Shaoshan	Tiantai	Yantai
Beijing Tongzhou	Guangyuan	Kaixian	Nanjing Pukou	Shaoxing	Tongliang	Yichun
Beijing Yizhuang	Guangzhou	Kaohsiung	Nanjing Xianlin	Shaoyang	Toyama	Yinchuan
Binzhou	Guangzhou Metro	Kunshan	Nanning	Shengzhou	Washington	Yiwu
Brussels	Guangzhou Univ.	Lanxi	Nantong	Shenmu County	Weifang	Yixing
Changde	Guilin	Lanzhou	Nanxun	Shenyang	Weifang Linqu	Yongcheng
Changji	Haian County	Lhasa	New York	Shenzhen Luohu	Wenling	Yongkang
Changshu	Haikou	Lianyungang	Ningbo	Shenzhen other dist.	Wenzhou Lucheng	Yueyang
Changwon	Haining	Lijiang	Ninghai	Shenzhen Shekou	Wenzhou Ou Hai	Yuhuan County
Chengdu Gaoxin	Hangzhou	Linhai	Ordos	Shenzhen Yantian	Wuhan	Zaozhuang
Chengdu Jinniu	Harbin	Linshu County	Paris	Shunde	Wuhan Qingshan	Zhangjiagang
Chenzhou	Heihe	Lishui	Pinghu	Sihong County	Wuhu	Zhangpu
Chizhou	Heze	Liuyang	Pingyi County	Siyang	Wujiang	Zhenjiang
Chongqing Kaixian	Hohhot	Liuzhou	Qidong	Sucheng	Wujiang Fenhui	Zhijin
Daqing	Huaipei	London	Qingdao	Suining	Wuxi	Zhongshan
Deqing	Huangyan	Luoyang	Qingzhou	Suqian	Xiamen Haicang	Zhongshan Sanxiang
Dinghai	Huizhou	Lyon	Qufu	Suzhou	Xian	Zhoushan
Dongguan	Huzhou	Maanshan	Quzhou	Suzhou Industry Park	Xiangtan	Zhuhai
Dujiangyan						
Foshan						
Fuzhou						
		Mengzi	Rio de Janeiro	Taipei	Xinchang	Zhuzhou

asp?c=Guangzhou Metro

www.publicbike.net is available in various languages and lists attributes of different cities Bicycle Sharing/Public Bicycle Programs. It also allows you to compare cities against each other.