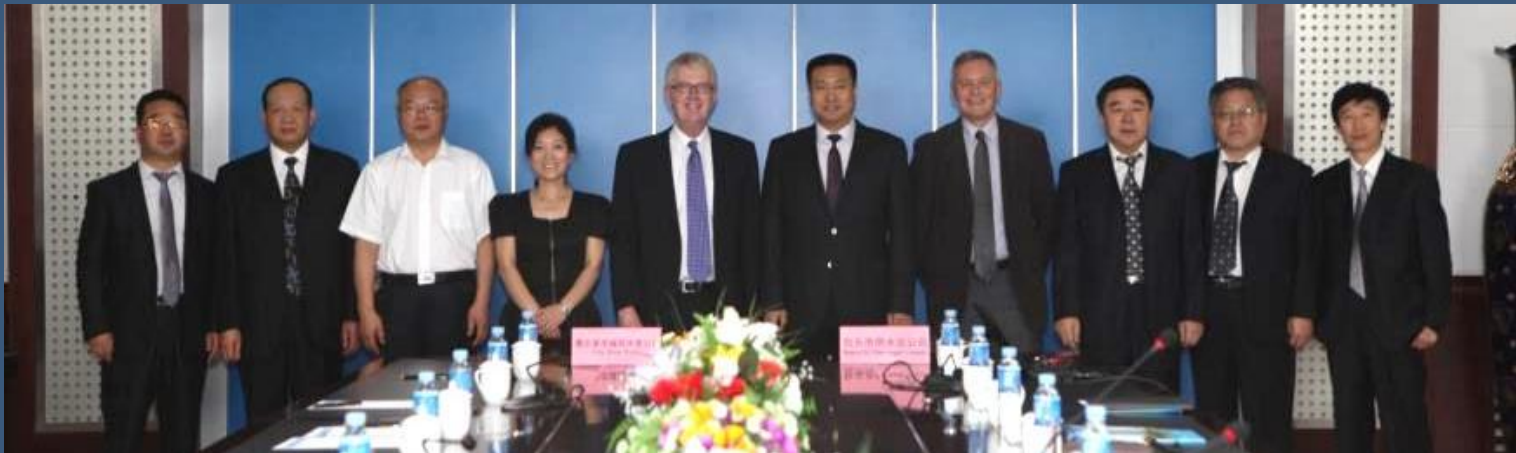


Twinning with Baotou City Water Supply Company, China



Matthew Giesemann, Keith Johns, Bruce Collins
& Sophie Wang



City West Water

This is not an ADB material. The views expressed in this document are the views of the author/s and/or their organizations and do not necessarily reflect the views or policies of the Asian Development Bank, or its Board of Governors, or the governments they represent. ADB does not guarantee the accuracy and/or completeness of the material's contents, and accepts no responsibility for any direct or indirect consequence of their use or reliance, whether wholly or partially. Please feel free to contact the authors directly should you have queries.

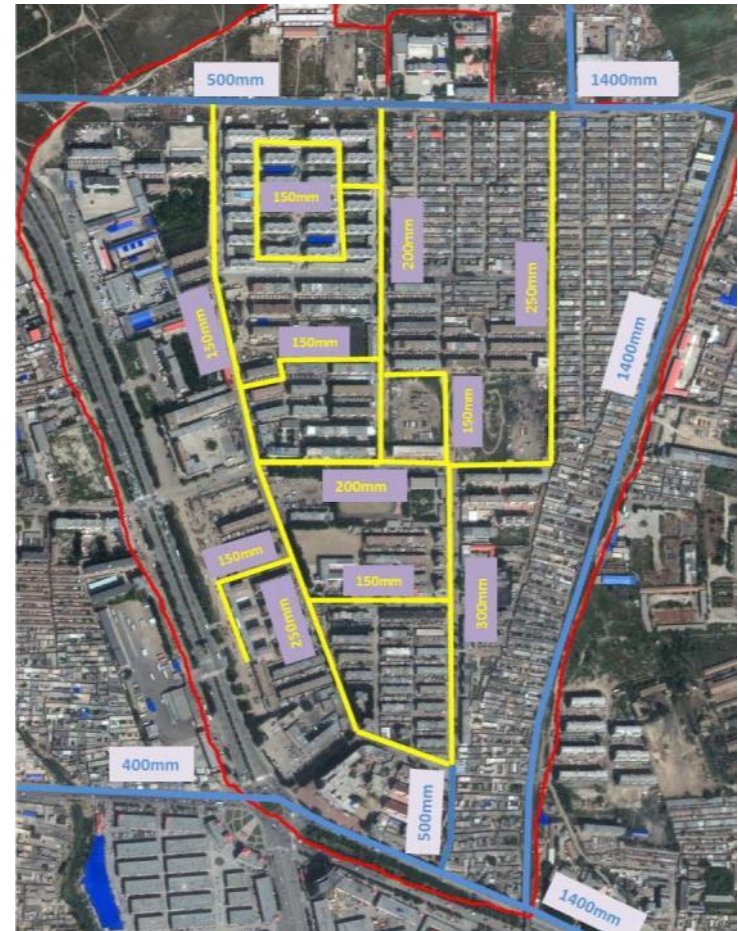
Twinning Visits

- Diagnostic visit by CWW in June 2012. Signing of Twinning Agreement
- Baotou Water (BTW) visit to CWW in November 2012
- CWW progress visit August 2013
- BTW returning to CWW in December 2013
- Final CWW visit in August 2014



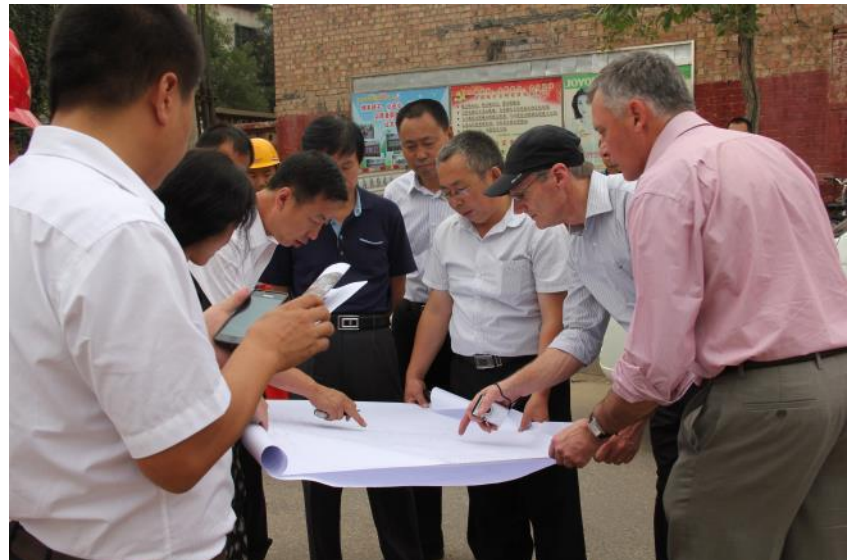
Twinning Project for BTW

- Development of KPIs such as Water main failure and water loss
- Establishment of a pilot DMA
- Development of hydraulic model for the pilot area
- Reduction of Non- Revenue Water



Twinning achievements

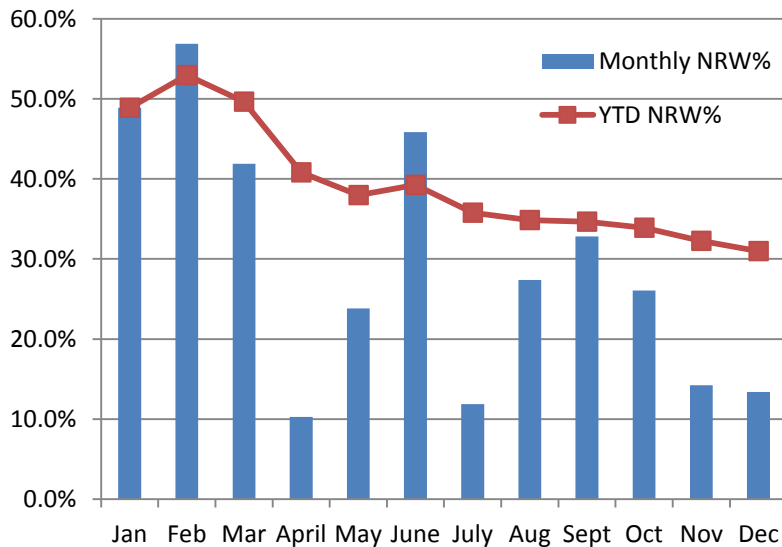
- Improvement in operational performance
- Reduction in water main failures in the pilot area
- 16km poor performing mains being replaced
- Improved active leak detection and meter reading program
- Exchange knowledge and experiences



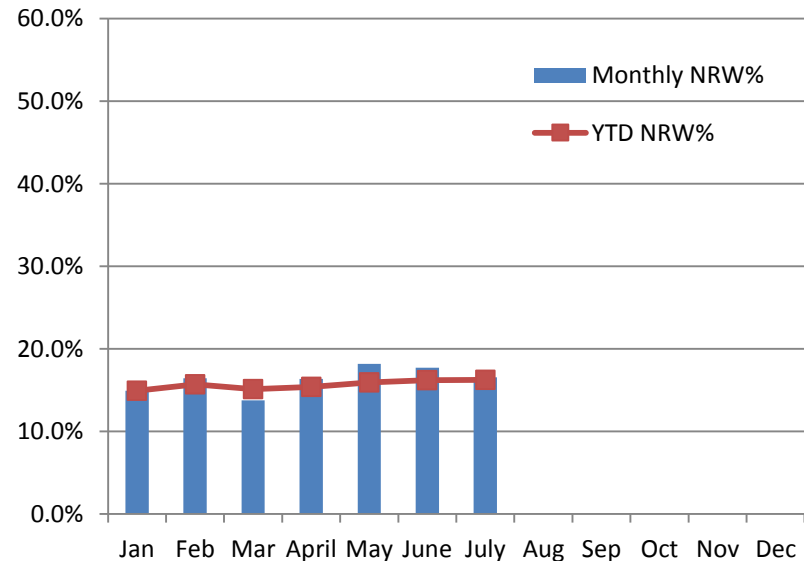
Twinning achievements

- Significant reduction in water loss in the pilot area
- Annual NRW being reduced from 31% in 2013 to 16.3% in 2014 YTD

Tiexi Pilot Area NRW 2013



Tiexi Pilot Area NRW 2014



Twinning achievements

NRW Project - Baotou Water and City West Water

Keith Johns, Bruce Collins, Sophie Wang - Twinning Project Team
City West Water, Melbourne, Australia

Shangfu Yun, Project Manager, Baotou City Water Company, Baotou,
Inner Mongolia, China

Water Loss Asia 2014 Conference, Kuala Lumpur, 3-4 September



City West Water