

A quasi-experiment on the effect of e-learning on students' mathematics scores and attitudes in Sri Lanka

Bilesha Weeraratne, PhD
Institute of Policy Studies
and
Brian Chin, PhD
Asian Development Bank

The views expressed in this presentation are the views of the author/s and do not necessarily reflect the views or policies of the Asian Development Bank, or its Board of Governors, or the governments they represent. ADB does not guarantee the accuracy of the data included in this presentation and accepts no responsibility for any consequence of their use. The countries listed in this presentation do not imply any view on ADB's part as to sovereignty or independent status or necessarily conform to ADB's terminology.

September 5, 2014

Table of contents

- 1 Introduction
- 2 Motivation
- 3 Objective of the project
- 4 Literature review
- 5 Previous interventions
- 6 Current Intervention
- 7 Methodology
- 8 Issues
- 9 Preliminary results

Introduction

Motivation

Objective of the project

Literature review

Previous interventions

Current Intervention

Methodology

Issues

Preliminary results

Introduction

Motivation

Objective of the project

Literature review

Previous interventions

Current Intervention

Methodology

Issues

Preliminary results

About the intervention

About the intervention

- A quasi-experiment

About the intervention

- A quasi-experiment
- to evaluate if supplementary e-learning methods would lead to improve students' achievements and their attitudes in mathematics
- Funded by the Asian Development Bank (ADB)
- Conducted jointly by the ADB and Ministry of Education (MoE), Sri Lanka

Introduction

Motivation

Objective of the project

Literature review

Previous interventions

Current Intervention

Methodology

Issues

Preliminary results

Introduction

Motivation

Objective of the project

Literature review

Previous interventions

Current Intervention

Methodology

Issues

Preliminary results

Introduction

Motivation

Objective of the project

Literature review

Previous interventions

Current Intervention

Methodology

Issues

Preliminary results

- The causal effect of education on wages is well established (Card, 1999; Krueger & Ashenfelter, 1992; Macdonald, 1981)

- The causal effect of education on wages is well established (Card, 1999; Krueger & Ashenfelter, 1992; Macdonald, 1981)
- Mathematics is an important subject learnt at school (Zan et al., 2006)

Introduction

Motivation

Objective of the project

Literature review

Previous interventions

Current Intervention

Methodology

Issues

Preliminary results

Education system in Sri Lanka

Introduction

Motivation

Objective of the project

Literature review

Previous interventions

Current Intervention

Methodology

Issues

Preliminary results

Education system in Sri Lanka

Introduction

Motivation

Objective of the project

Literature review

Previous interventions

Current Intervention

Methodology

Issues

Preliminary results

Education system in Sri Lanka

- Mathematics is introduced as early as the first grade

Introduction

Motivation

Objective of the project

Literature review

Previous interventions

Current Intervention

Methodology

Issues

Preliminary results

Education system in Sri Lanka

- Mathematics is introduced as early as the first grade
- It remains a core subject till the 11th grade

Introduction

Motivation

Objective of the project

Literature review

Previous interventions

Current Intervention

Methodology

Issues

Preliminary results

Education system in Sri Lanka

- Mathematics is introduced as early as the first grade
- It remains a core subject till the 11th grade
- 1 of the 3 compulsory subjects to qualify the General Certificate in Education Ordinary Level exam

Introduction

Motivation

Objective of the project

Literature review

Previous interventions

Current Intervention

Methodology

Issues

Preliminary results

High Failure rate in mathematics

High Failure rate in mathematics

- During 2005 to 2010 the average mathematics failure rate was 50.31 percent

High Failure rate in mathematics

- During 1999 to 2004 the average failure rate was 60 percent
- During 2005 to 2010 the average mathematics failure rate was 50.31 percent

High Failure rate in mathematics

- During 1999 to 2004 the average failure rate was 60 percent
- During 2005 to 2010 the average mathematics failure rate was 50.31 percent
- In 2013, 42.77 percent students have failed in mathematics in the GCE O/L examination

High Failure rate in mathematics

- During 1999 to 2004 the average failure rate was 60 percent
- During 2005 to 2010 the average mathematics failure rate was 50.31 percent
- In 2013, 42.77 percent students have failed in mathematics in the GCE O/L examination
- High failure rates translates into high drop out rates

Introduction

Motivation

Objective of the project

Literature review

Previous interventions

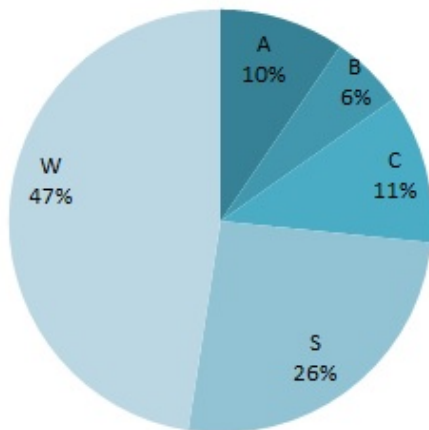
Current Intervention

Methodology

Issues

Preliminary results

Grade Distribution in 2011



Introduction

Motivation

Objective of the project

Literature review

Previous interventions

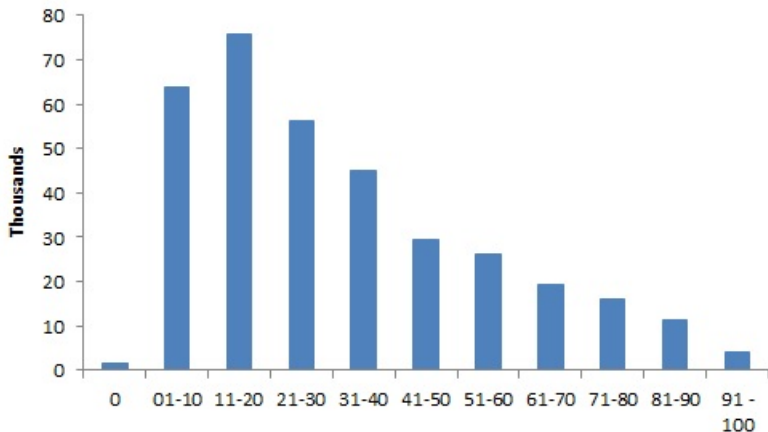
Current Intervention

Methodology

Issues

Preliminary results

Marks Distribution in 2011



Other aspects of education in Sri Lanka

- since independence in 1948, has made significant investments in education
- have reached impressive levels in indicators such as adult literacy rates (95.6 % in 2013)
- and primary net enrollment rates (98.4 % in 2012) (CBSL, 2014)
- A culture of significant expenditure of time and money on supplementary 'tuition'

Introduction

Motivation

Objective of the project

Literature review

Previous interventions

Current Intervention

Methodology

Issues

Preliminary results

Objective of the project

Introduction

Motivation

Objective of the project

Literature review

Previous interventions

Current Intervention

Methodology

Issues

Preliminary results

Objective of the project

Introduction

Motivation

Objective of the project

Literature review

Previous interventions

Current Intervention

Methodology

Issues

Preliminary results

Objective of the project

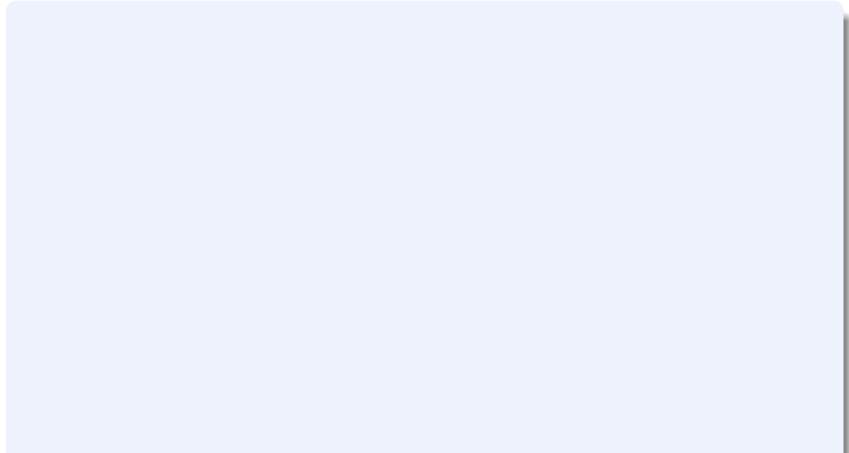
- To discern if using supplementary e-learning methods would lead to improve students' achievements and their attitudes in mathematics

Introduction
Motivation
Objective of the project
Literature review
Previous interventions
Current Intervention
Methodology
Issues
Preliminary results

Effectiveness of e-learning

- Introduction
- Motivation
- Objective of the project
- Literature review**
- Previous interventions
- Current Intervention
- Methodology
- Issues
- Preliminary results

Effectiveness of e-learning



Effectiveness of e-learning

- 'available evidence on whether computers actually make a difference for students is quite small and the results are mixed' (Rouse & Krueger, 2004)

Effectiveness of e-learning

- 'available evidence on whether computers actually make a difference for students is quite small and the results are mixed' (Rouse & Krueger, 2004)
- 'effects [of computer based teaching] were larger in published rather than unpublished studies' (Kulik & Kulik, 1991)

Effectiveness of e-learning

- 'available evidence on whether computers actually make a difference for students is quite small and the results are mixed' (Rouse & Krueger, 2004)
- 'effects [of computer based teaching] were larger in published rather than unpublished studies' (Kulik & Kulik, 1991)
- 'it is not always clear that they are the most cost-effective means of doing so [improving students' achievement](Dundar et al., 2014)

Effectiveness of e-learning

- 'available evidence on whether computers actually make a difference for students is quite small and the results are mixed' (Rouse & Krueger, 2004)
- 'effects [of computer based teaching] were larger in published rather than unpublished studies' (Kulik & Kulik, 1991)
- 'it is not always clear that they are the most cost-effective means of doing so [improving students' achievement](Dundar et al., 2014)
- Compared to a teacher based remedial program, a computer aided remedial program has the capacity to double test scores (Banerjee et al., 2007)

One Laptop Per Child (OLPC)

- OLPC was implemented in Sri Lanka in 2009
- funding from the World Bank
- 1,300 students in selected primary schools throughout the country were given laptops
- survey information of 973 students from grades 1 to 3, across eight T and eight C schools
- students in grades 2 and 3 experienced 22-23 percent increase in test scores due to the intervention

MPDA

- implemented for a sample of 224 students (107 in the T group and 117 in the C group)
- Among the eight schools (3 in T group only, 4 in the C group only and 1 in both T and C groups)
- Limited to the Western Province
- selected purposively after evaluating their IT facilities
- When standardized test scores were compared, the T groups improved by approximately 6.92 percent of the possible score range, than the C group

Current intervention

Grade 8: Mathcloud

- An adaptive e-learning mathematics system
- MC content is translated to Sinhala (the native language in Sri Lanka)
- Mapped to the local eighth grade curriculum
- 20 school and two classrooms from each school, each serving as the T group and C group, within each school
- 30-40 students in each class
- C group: regular class room environment with a mathematics teacher during all 5 days of the week
- T group: regular class room environment + supplementary computer based instructions during 2-3 days of the 5 days

Grade 9: Khan Academy

- Audio-visual tutorials on the concept of Khan Academy
- Translated + material developed by the NIE
- (another) 20 schools and two classrooms from each school, each serving as the T group and C group, within each school
- 30-40 students in each class
- C group: regular class room environment with a mathematics teacher during all 5 days of the week.
- T group: regular class room environment + supplementary self-study e-learning tutorials for 2-3 days of the 5 days.

Methodology

Difference-in-difference

$$Y_{it} = \alpha + \delta Time_{it} + \gamma Treat_{it} + \theta[Time_{it} \times Treat_{it}] + X'_{it}\beta + \epsilon$$

Outcomes

- Raw score
- Standardized score
- Scaled score

Assumption

- Parallel trends between the T/C groups

- Introduction
- Motivation
- Objective of the project
- Literature review
- Previous interventions
- Current Intervention
- Methodology
- Issues**
- Preliminary results

Planning

Implementation

- Introduction
- Motivation
- Objective of the project
- Literature review
- Previous interventions
- Current Intervention
- Methodology
- Issues**
- Preliminary results

Planning

Implementation

Planning

- 3 academic terms (9 months).

Implementation

Planning

- 3 academic terms (9 months).

Implementation

- 2 academic terms (6 months).

Planning

- 3 academic terms (9 months).
- 1 pretest and 3 post tests.

Implementation

- 2 academic terms (6 months).

Planning

- 3 academic terms (9 months).
- 1 pretest and 3 post tests.

Implementation

- 2 academic terms (6 months).
- 1 pretest and 2 post tests.

Planning

- 3 academic terms (9 months).
- 1 pretest and 3 post tests.
- Random sampling of schools.

Implementation

- 2 academic terms (6 months).
- 1 pretest and 2 post tests.

Planning

- 3 academic terms (9 months).
- 1 pretest and 3 post tests.
- Random sampling of schools.

Implementation

- 2 academic terms (6 months).
- 1 pretest and 2 post tests.
- Purposive sampling of schools.

Planning

- 3 academic terms (9 months).
- 1 pretest and 3 post tests.
- Random sampling of schools.
- Within school, random sampling of classes into T/C groups.

Implementation

- 2 academic terms (6 months).
- 1 pretest and 2 post tests.
- Purposive sampling of schools.

Planning

- 3 academic terms (9 months).
- 1 pretest and 3 post tests.
- Random sampling of schools.
- Within school, random sampling of classes into T/C groups.

Implementation

- 2 academic terms (6 months).
- 1 pretest and 2 post tests.
- Purposive sampling of schools.
- Within school, purposive sampling of classes into T/C groups.

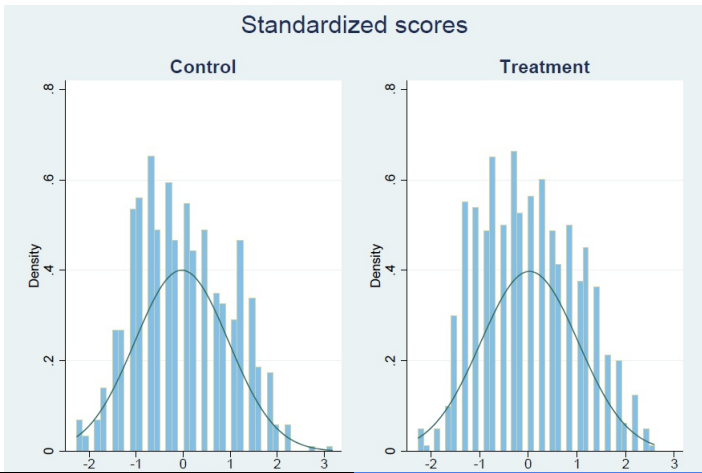
- Introduction
- Motivation
- Objective of the project
- Literature review
- Previous interventions
- Current Intervention
- Methodology
- Issues
- Preliminary results

Student Performance - Baseline Test - Grade 8 Raw Scores

Raw Score	Freq.	Percent	Raw Score	Freq.	Percent
0	10	0.72	15	63	4.55
1	4	0.29	16	68	4.91
2	10	0.72	17	55	3.97
3	20	1.44	18	76	5.49
4	47	3.39	19	58	4.19
5	67	4.84	20	33	2.38
6	89	6.43	21	31	2.24
7	87	6.28	22	10	0.72
8	108	7.80	23	15	1.08
9	82	5.92	24	4	0.29
10	104	7.51	25	1	0.07
11	82	5.92	26	1	0.07
12	92	6.64	28	1	0.07
13	86	6.21			
14	81	5.85	Total	1,385	100

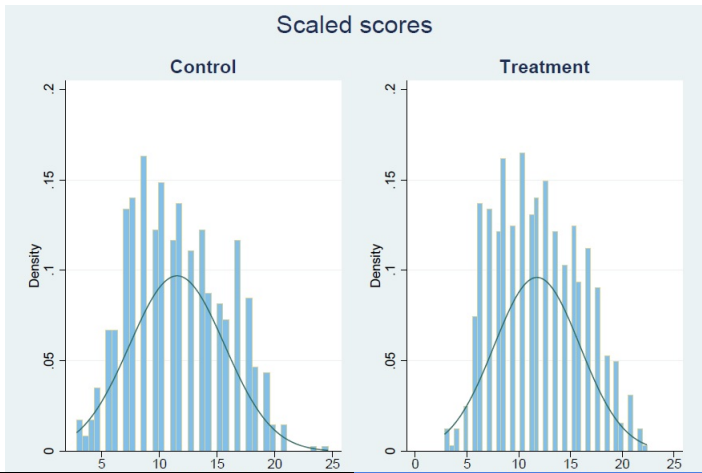
- Introduction
- Motivation
- Objective of the project
- Literature review
- Previous interventions
- Current Intervention
- Methodology
- Issues
- Preliminary results

Grade 8 Standardized scores



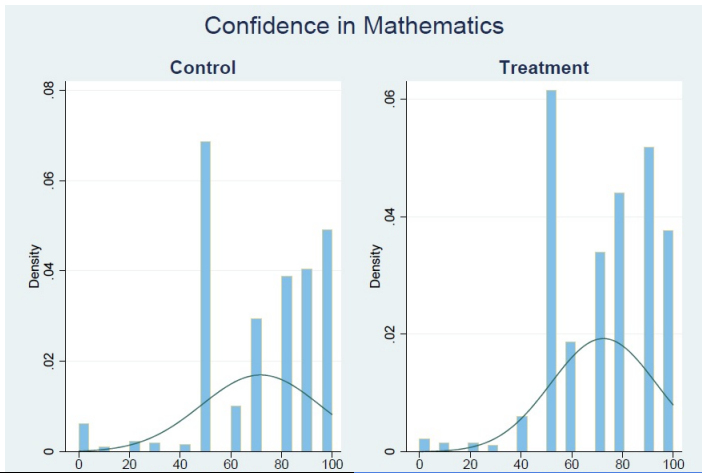
- Introduction
- Motivation
- Objective of the project
- Literature review
- Previous interventions
- Current Intervention
- Methodology
- Issues
- Preliminary results

Grade 8 scaled scores (1PL)



- Introduction
- Motivation
- Objective of the project
- Literature review
- Previous interventions
- Current Intervention
- Methodology
- Issues
- Preliminary results

Grade 8 Confidence in Math



Introduction
Motivation
Objective of the project
Literature review
Previous interventions
Current Intervention
Methodology
Issues
Preliminary results

- Introduction
- Motivation
- Objective of the project
- Literature review
- Previous interventions
- Current Intervention
- Methodology
- Issues
- Preliminary results**

Thank you