



GREEN SOLUTIONS FOR INTEGRATED SOLID WASTE MANAGEMENT (ISWM)

Surendra Shrestha

Director, International Environmental Technology Centre (IETC), UNEP

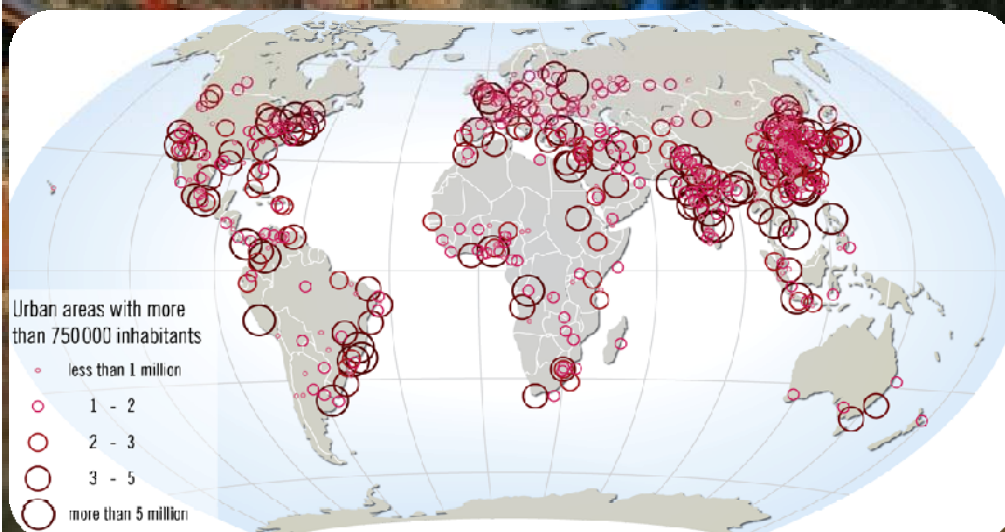


This is not an ADB material. The views expressed in this document are the views of the author/s and/or their organizations and do not necessarily reflect the views or policies of the Asian Development Bank, or its Board of Governors, or the governments they represent. ADB does not guarantee the accuracy and/or completeness of the material's contents, and accepts no responsibility for any direct or indirect consequence of their use or reliance, whether wholly or partially. Please feel free to contact the authors directly should you have queries.

Context for ISWM: MDGs → SDGs

Mega Trends

- Population: 7.3 billion → **11 billion**
- Economic Growth → **CONSUMPTION**
- Urbanisation: **80%** Of Humanity in Cities



- Finite natural resources
- Resources needs: 5 Planets
- Policy: delink growth-waste

Waste within an integrated framework

- Holistic approach to waste

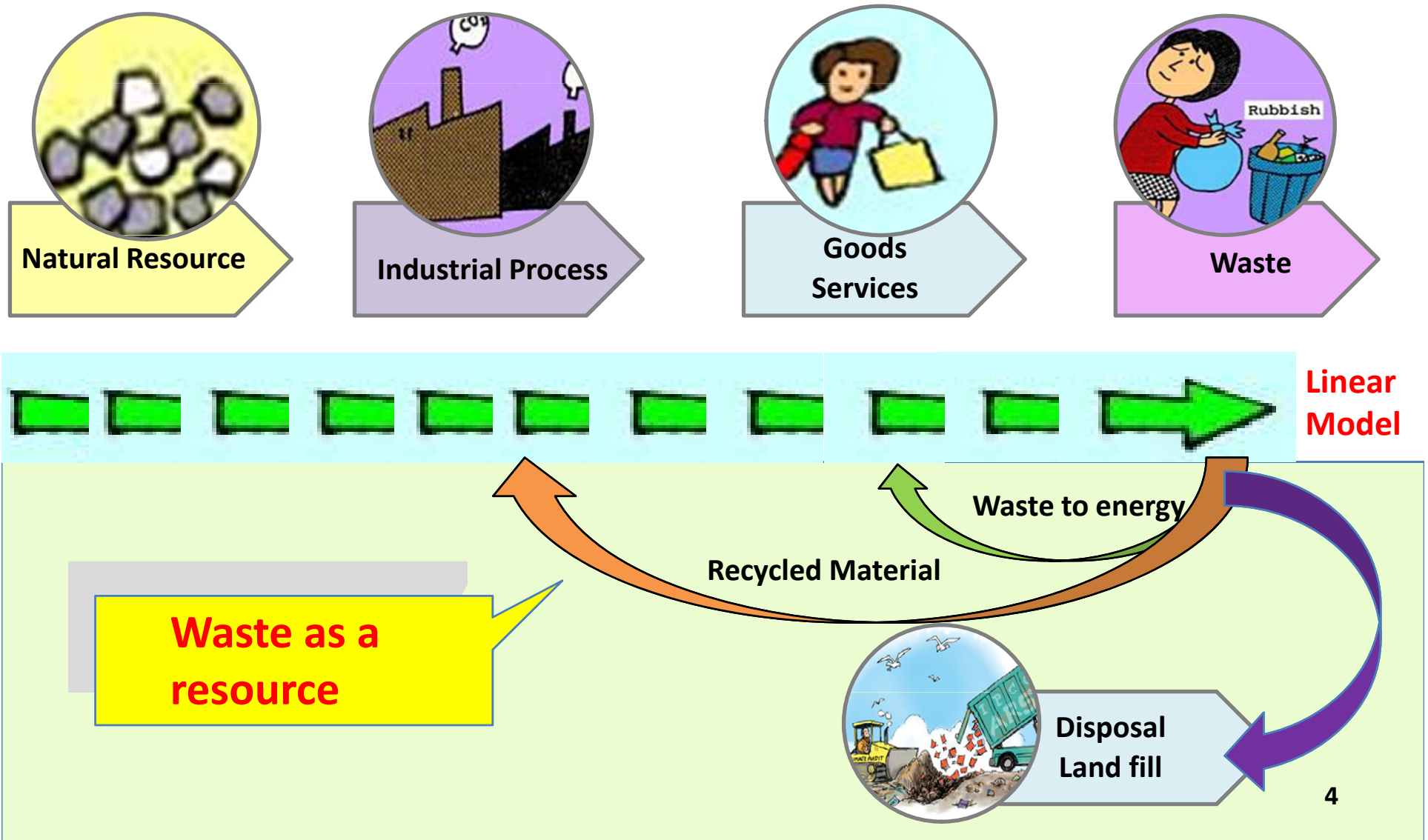
- Integration of 4 dimensions

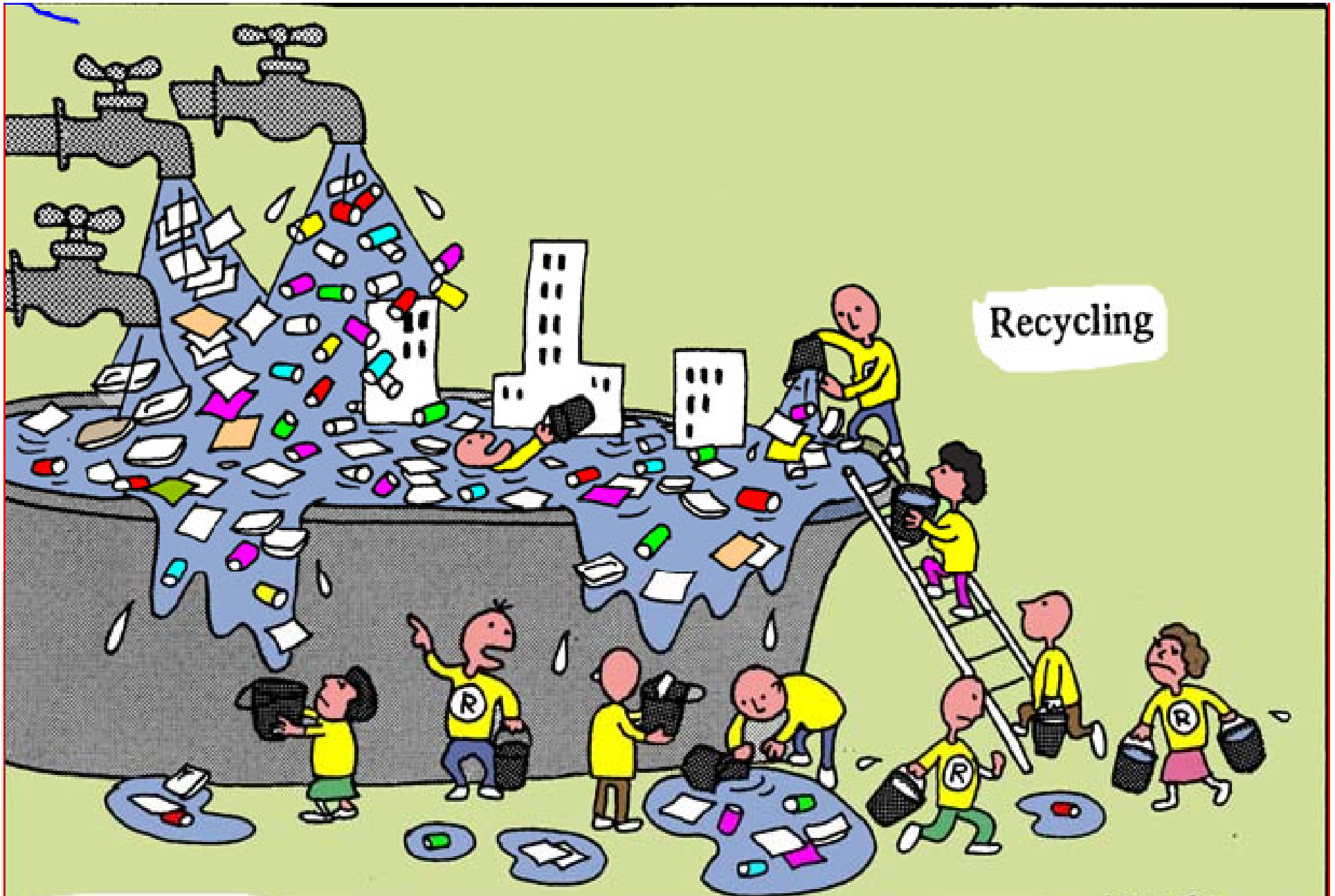


- ISWM in action



ISWM: Decoupling Tool Across Life Cycle





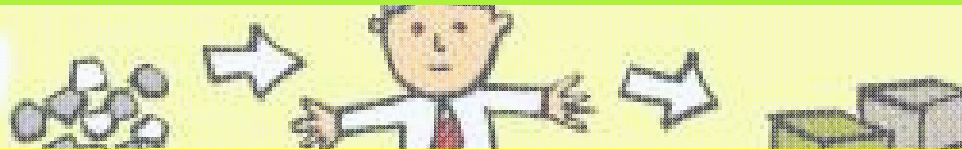
Recycling

"Wouldn't it be better to simply turn off the taps?"

High Moon

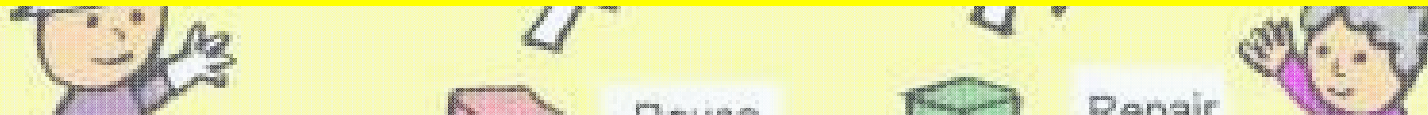
Key messages

Raw material



Products

1. Holistic approach: Solid Liquid Gaseous



2 Waste: Resource – Growth Jobs

Waste: key driver sustainable development



Recycling

3. Promote: Proactive Prevention Policies

Towards shorter, more efficient cycles

High Moon