



Integrated Urban Planning and Development

Urban and Water Division
South Asia Department

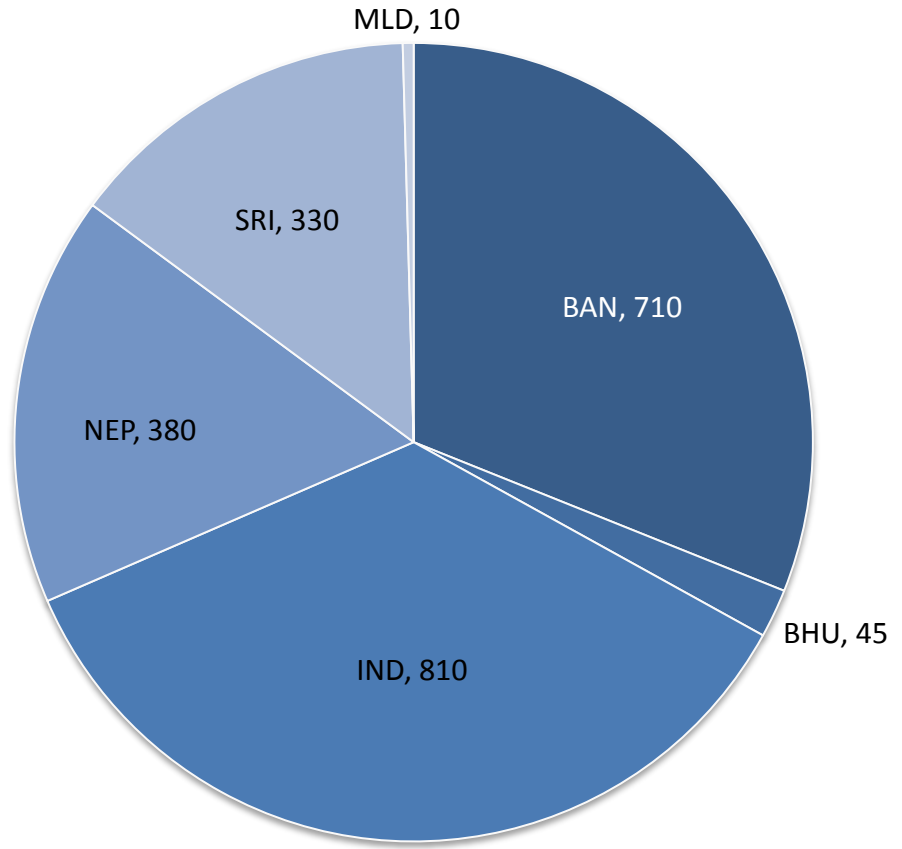
December 2013

The views expressed in this presentation are the views of the author/s and do not necessarily reflect the views or policies of the Asian Development Bank, or its Board of Governors, or the governments they represent. ADB does not guarantee the accuracy of the data included in this presentation and accepts no responsibility for any consequence of their use. The countries listed in this presentation do not imply any view on ADB's part as to sovereignty or independent status or necessarily conform to ADB's terminology.



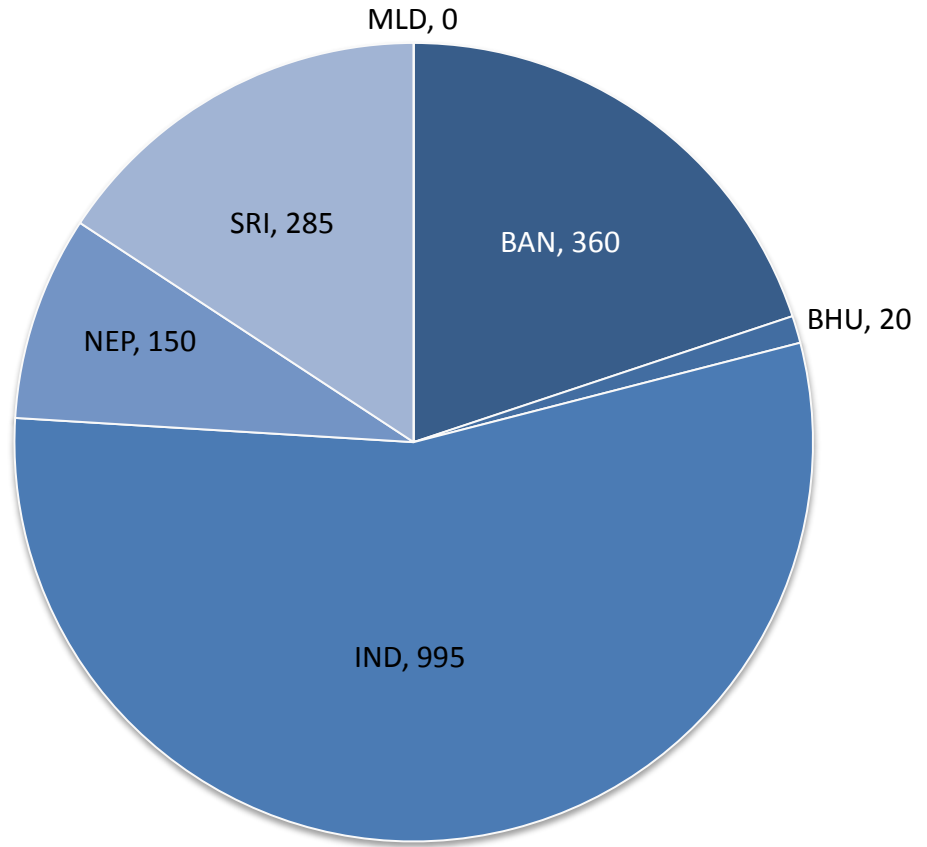
Urban and Water Division

Business Line



SAUW – Existing Portfolio

- \$2.3 billion across 6 countries



SAUW – 3year Pipeline

- \$1.8 billion across 5 countries
- 2014-16



Urban and Water Division

Developmental Challenges and Strategic Directions

Challenges and Directions



■ Challenges

- Rapid urbanization and high poverty incidence
- Poor leadership and weak governance
- Poor institutional coordination
- Lack of HR capacity
- Operating inefficiencies
- Need for substantial capital investments
- Multiple cities and towns

■ Strategic Directions

- City-focused development
- Strengthen institutions and governance
- Strengthen sustainable and alternative sources of financing
- Public private partnerships



Integrated Planning Initiative

Trincomalee Integrated Urban Development Project

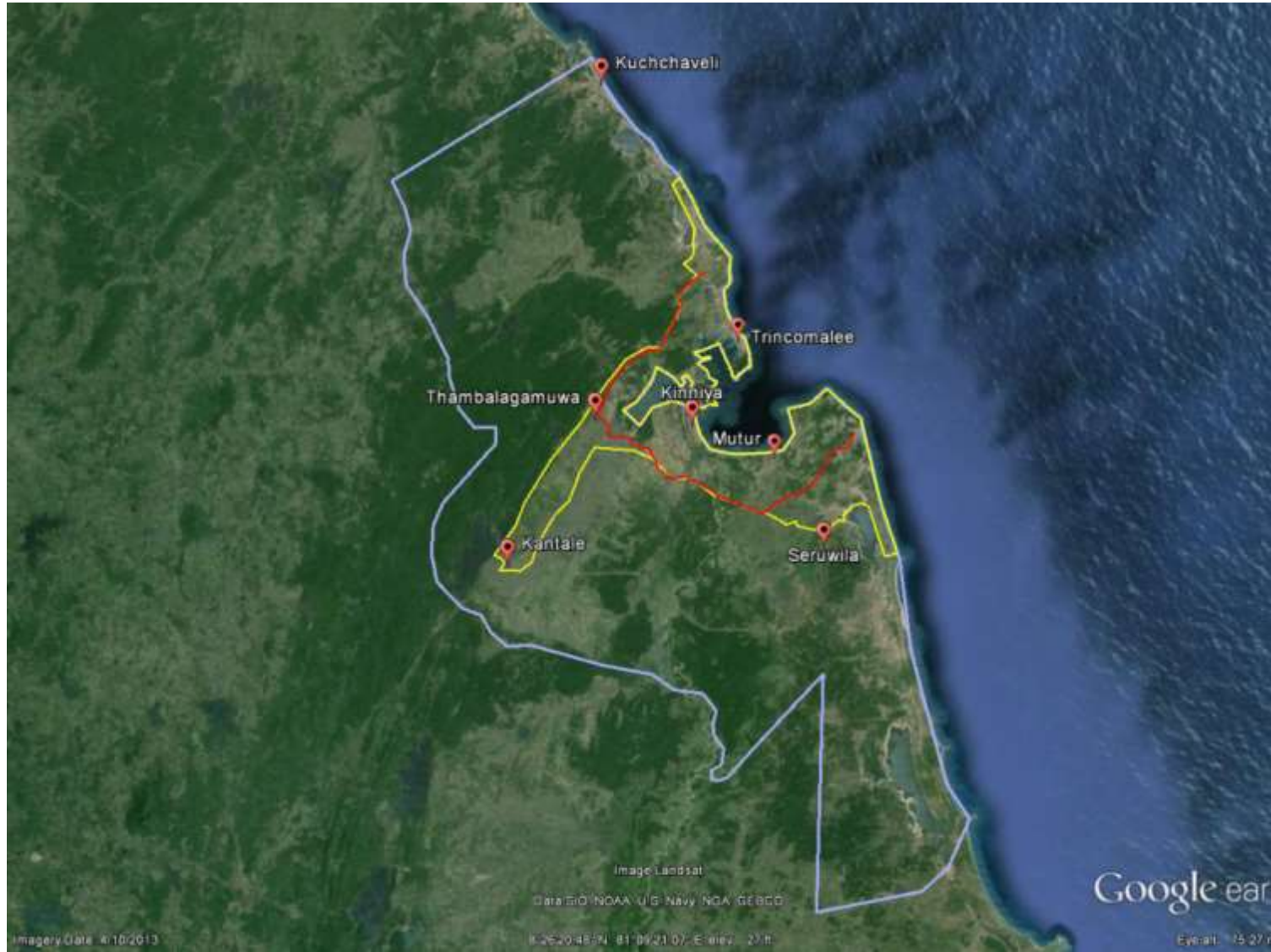
Development Nodes



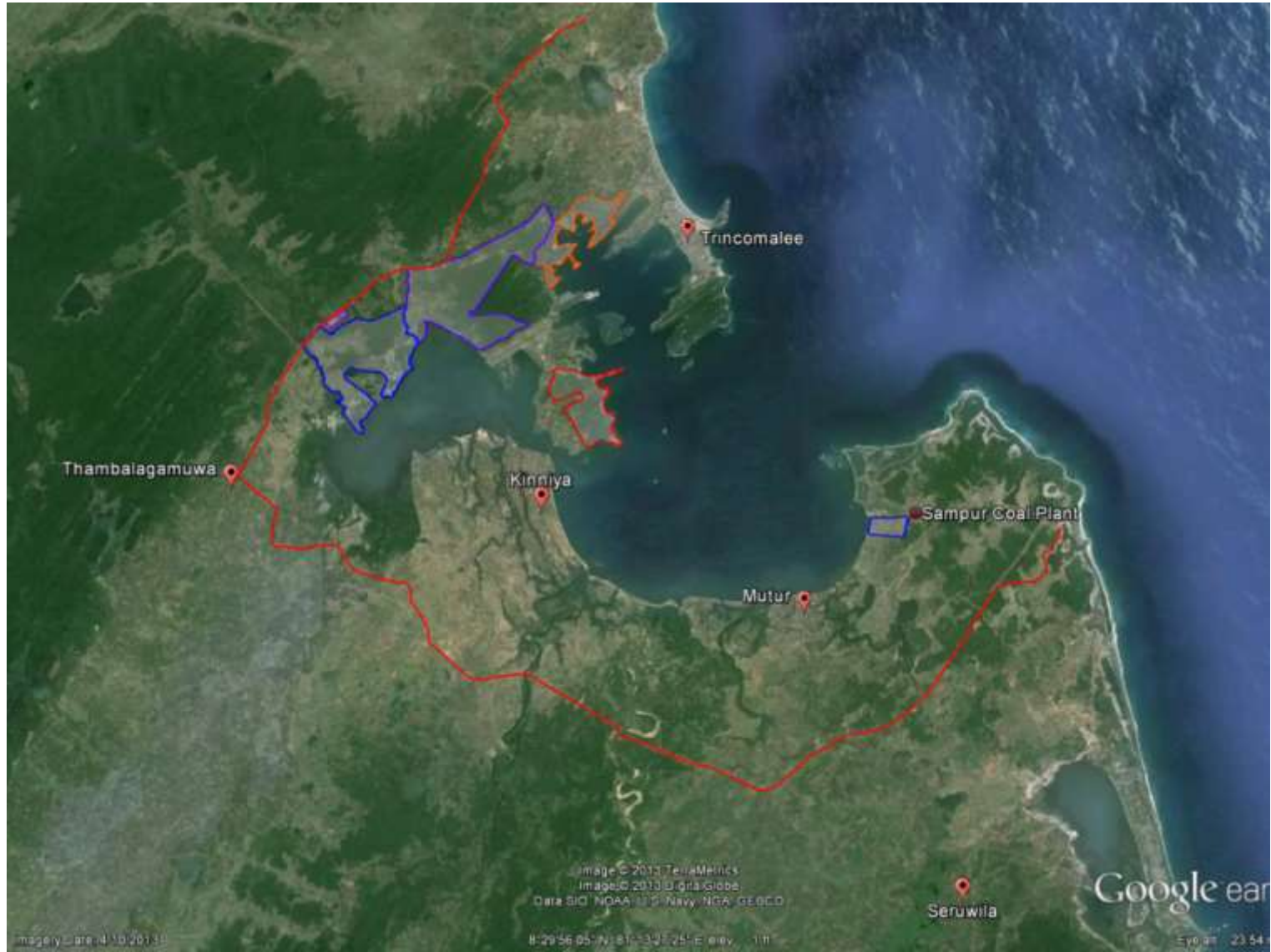
Metro Regions



Trincomalee Urban Dev. Area



Key Development Features



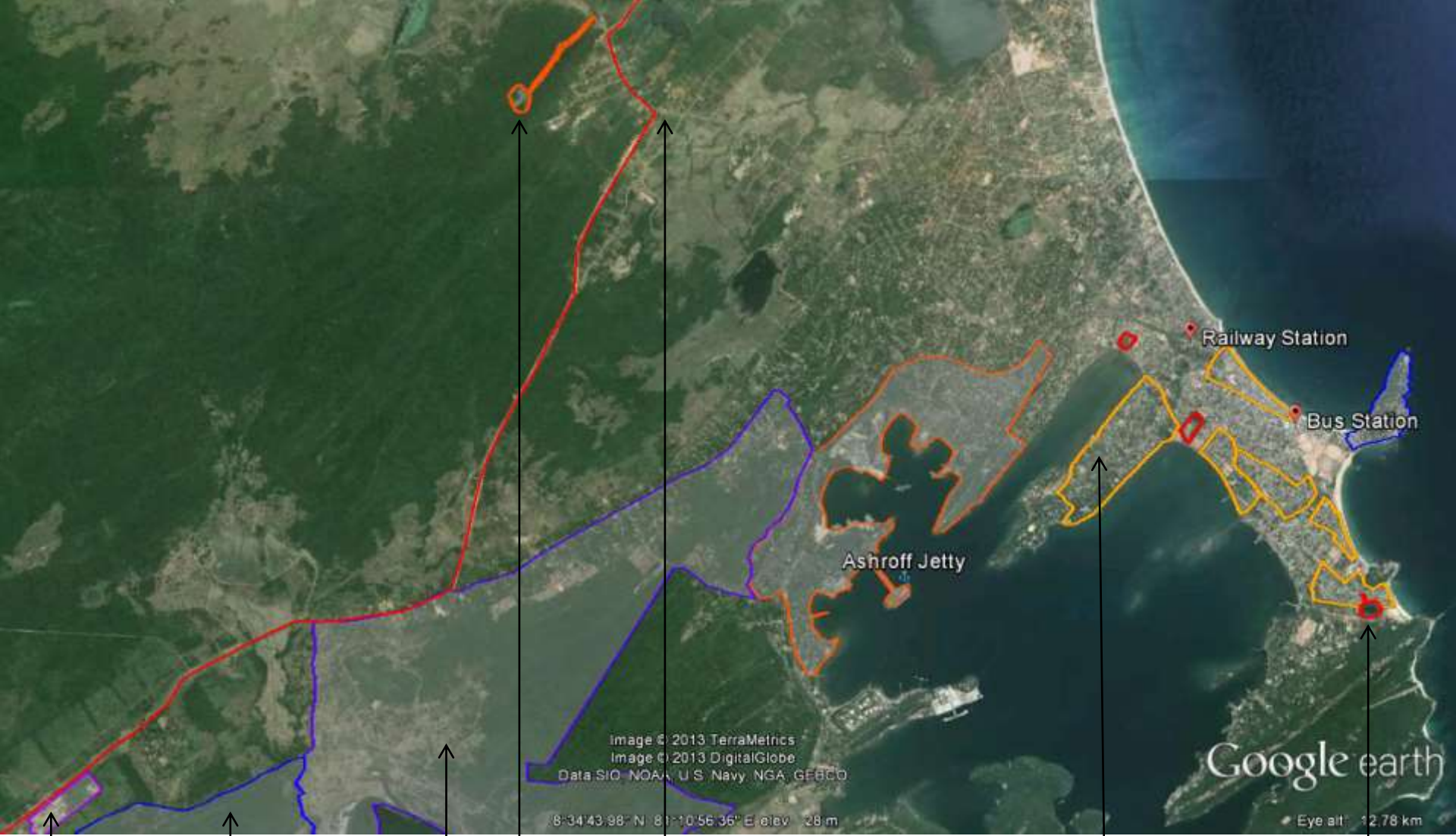
Project Scope



- Key features
 - Fostering economic growth
 - Improving urban basic services

- Physical improvements
 - Urban basic services
 - Storm water drainage
 - Sewerage and sanitation
 - SWM and regional sanitary landfill
 - Urban redevelopment

- Nonphysical
 - Update the TMUDA Master Plan addressing strategic economic interventions
 - Capacity development of UDA and UC



Kapalthurai Industrial Estate

SLPA Industrial Area

Kanniya Sanitary Landfill

Proposed Inner Ring Road

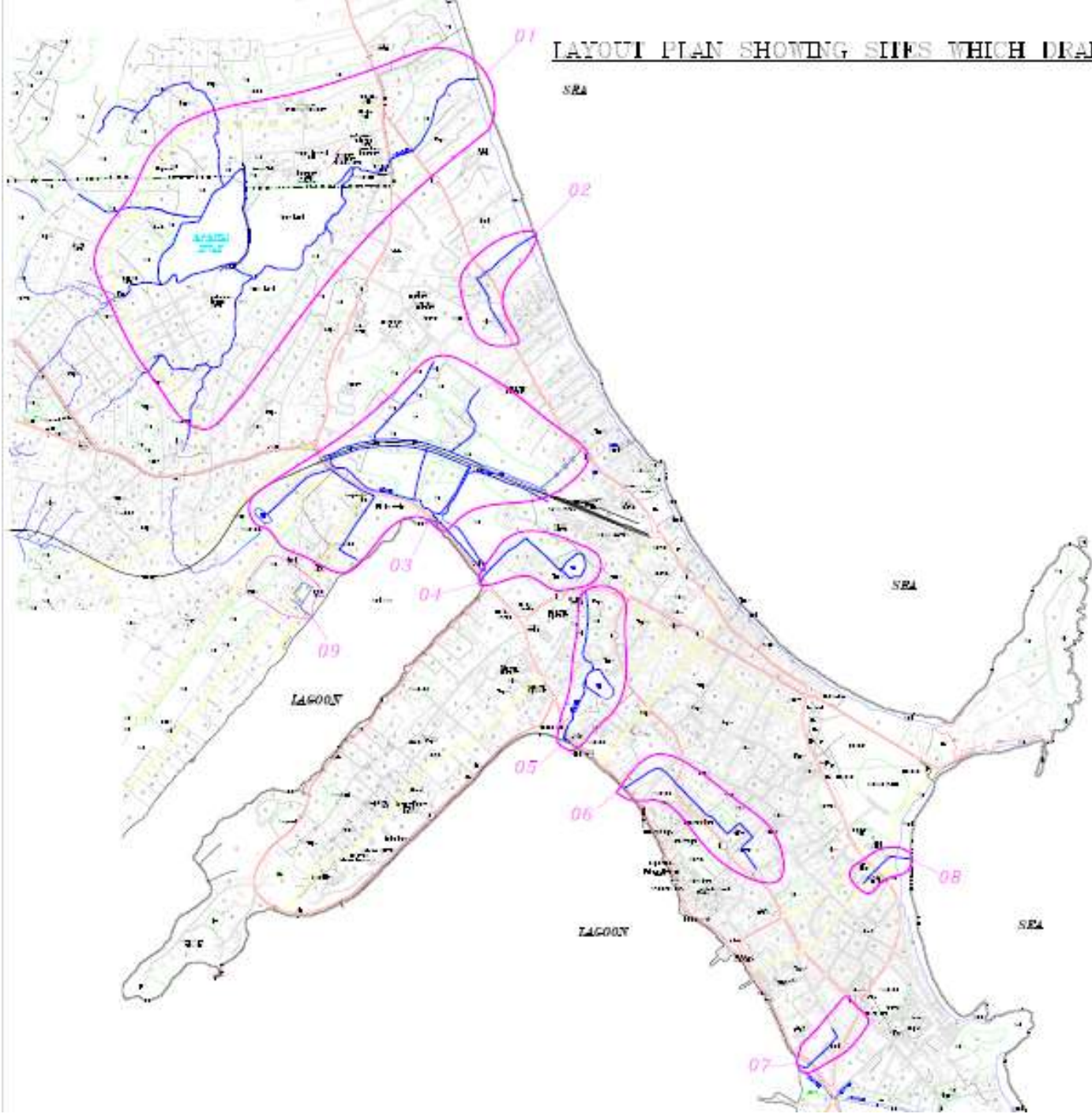
Decentralized Sewerage Zones

Flooding Hotspots

Storm Water Drainage



LAYOUT PLAN SHOWING SITES WHICH DRAINAGE S



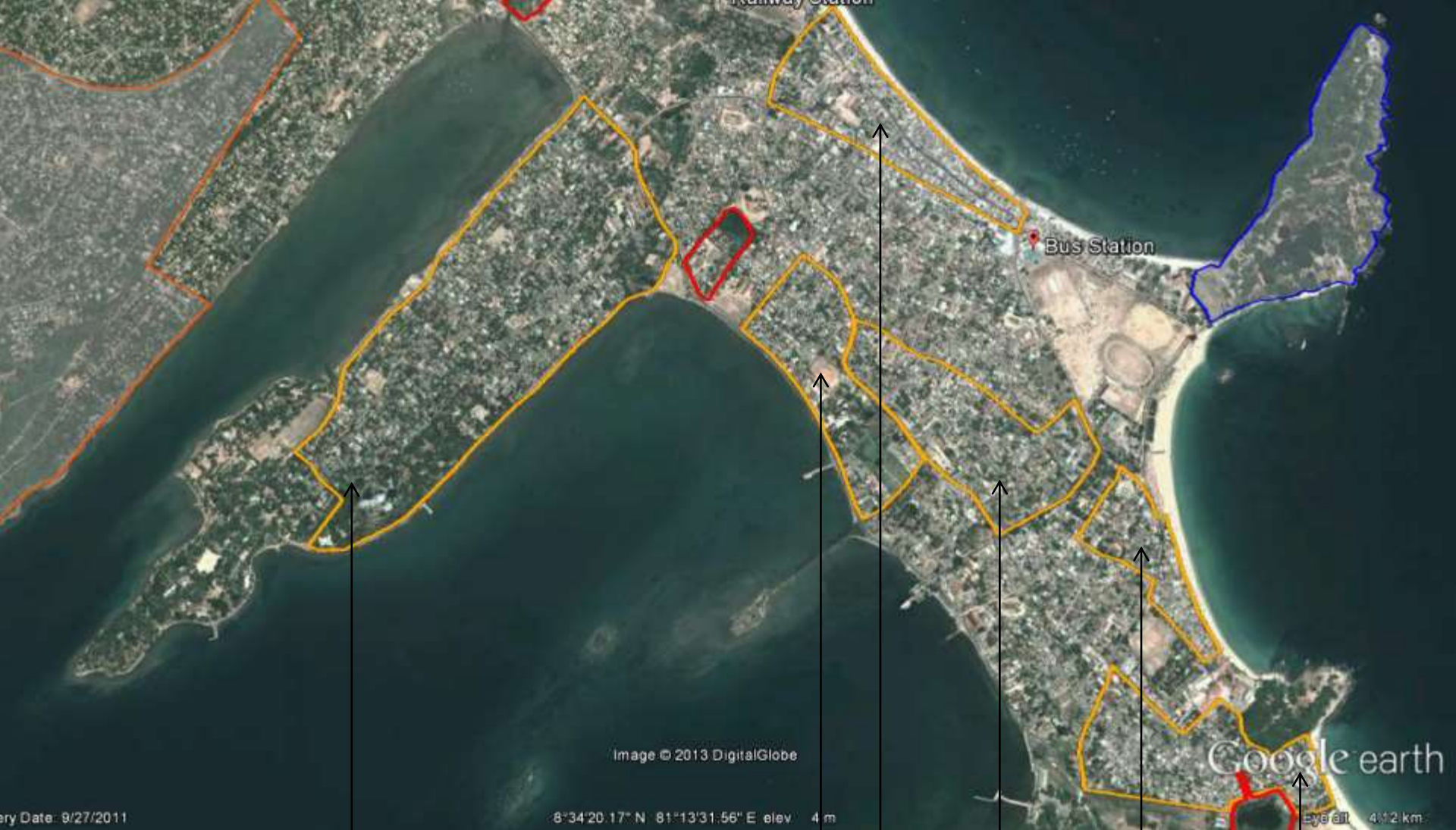
SITE NO.

- 01 - DRAIN
- 02 - DRAIN
- 03 - DRAIN
- 04 - DRAIN
- 05 - DRAIN
- 06 - DRAIN
- 07 - DRAIN
- 08 - DRAIN
- 09 - DRAIN



Sewerage and Sanitation





Orr's Hill
Sewerage
Zone

Thillainagar
Sewerage
Zone

Central Road
Sewerage
Zone

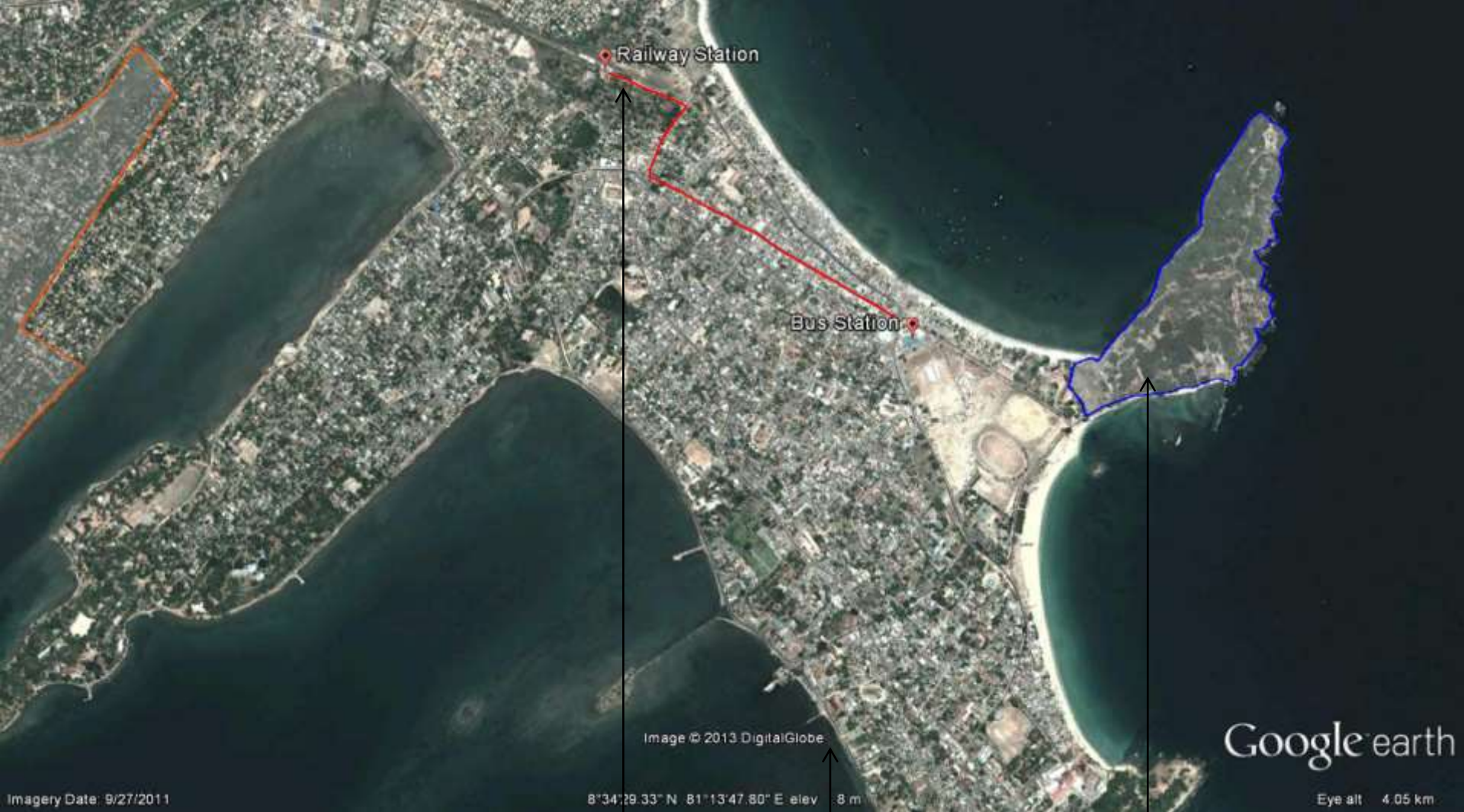
Moor Street
Sewerage
Zone

Dyke Road
Sewerage
Zone

Manayaveli
Sewerage
Zone

Sanitary Landfill





Railway Station

Bus Station

Image © 2013 DigitalGlobe

Google earth

Imagery Date: 9/27/2011

8°34'29.33" N 81°13'47.80" E elev 8 m

Eye alt 4.05 km

Rail-Bus
Development
Axis

Inner Harbor
Boulevard
Development

Fort Fredric
Redevelopment



Urban and Water Division

Potential Cities for Future Integrated Planning Activities

Potential Cities

- Sri Lanka: Trincomalee
- India: Bangalore
- Nepal: Pokhara





Thank You

For the Urban Community of Practice
Asian Development Bank